



US006766174B1

(12) **United States Patent**
Kenyon

(10) **Patent No.:** **US 6,766,174 B1**
(45) **Date of Patent:** **Jul. 20, 2004**

(54) **METHOD AND APPARATUS FOR PROVIDING DIRECTIONAL INFORMATION**

(75) Inventor: **Jeffrey D. Kenyon**, Boulder, CO (US)

(73) Assignee: **Qwest Communications, Int'l, Inc.**, Denver, CO (US)

(*) Notice: Subject to any disclaimer, the term of this patent is extended or adjusted under 35 U.S.C. 154(b) by 0 days.

(21) Appl. No.: **09/276,292**

(22) Filed: **Mar. 25, 1999**

(51) **Int. Cl.**⁷ **H04Q 7/20**

(52) **U.S. Cl.** **455/457; 455/456; 455/457; 701/201; 701/211; 342/357**

(58) **Field of Search** **455/456, 457, 455/33.1, 461, 466, 422, 414, 406; 379/58, 59, 63; 342/357.09, 357, 350, 357.1; 701/201, 213, 211**

(56) **References Cited**

U.S. PATENT DOCUMENTS

5,625,668	A	*	4/1997	Loomis et al.	379/58
5,712,899	A	*	1/1998	Pace, II	379/58
5,959,577	A	*	9/1999	Fan et al.	342/357.13
6,049,718	A	*	4/2000	Stewart	455/456
6,122,521	A	*	9/2000	Wilkinson et al.	455/457
6,272,332	B1	*	8/2001	Matsumoto et al.	455/412
6,292,743	B1	*	9/2001	Pu et al.	455/456.6
6,314,295	B1	*	11/2001	Kawamoto	455/457
6,522,875	B1	*	2/2003	Dowling et al.	455/414.3

OTHER PUBLICATIONS

"An Introduction to SnapTrack™ Server-Aided GPS Technology" <http://www.snaptrack.com>; 11/98.

* cited by examiner

Primary Examiner—Edward F. Urban

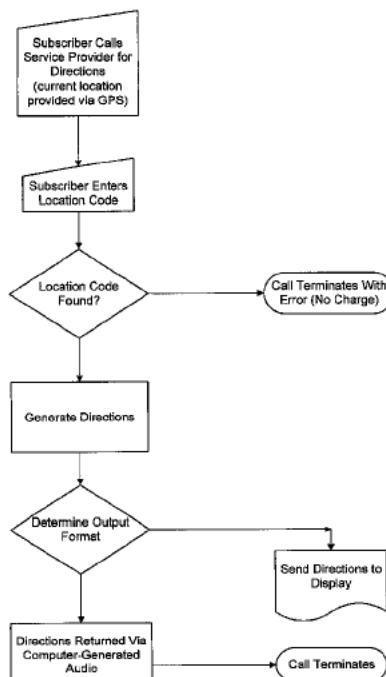
Assistant Examiner—Lana Le

(74) *Attorney, Agent, or Firm*—Kenneth J. Johnson; Robert G. Crouch; Marsh Fischmann & Breyfogle LLP

(57) **ABSTRACT**

A communications system provides the functionality to provide a wireless telephone user directional information to a desired destination. Incorporated into the wireless telephone is a position determining device such as a global positioning system (GPS) device. When a phone user establishes a connection with a particular switch in the wireless network, this positional information from the GPS device is provided and the location of the wireless phone may be determined. The wireless telephone user also provides information regarding the desired destination. Associated with the destination code for the desired destination is a physical street address. Using the known location of the wireless telephone and the street address for the desired destination, a mapping procedure may be performed to determine a route between the two points. This route may be then converted to audio and/or alphanumeric directions. The directions would then be transmitted to the wireless phone which would either present them in audio form, or via a display incorporated into the telephone.

6 Claims, 5 Drawing Sheets



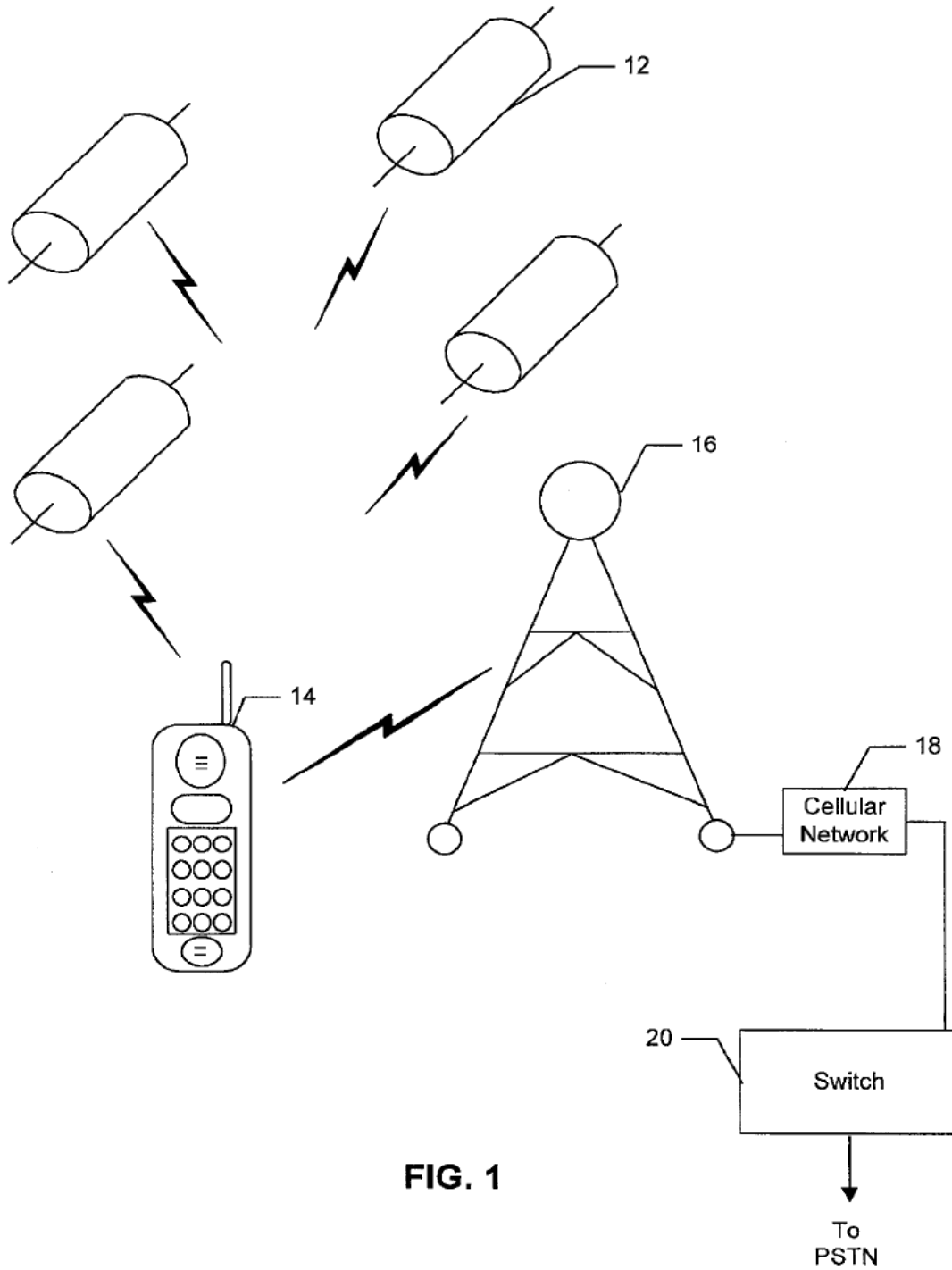


FIG. 1

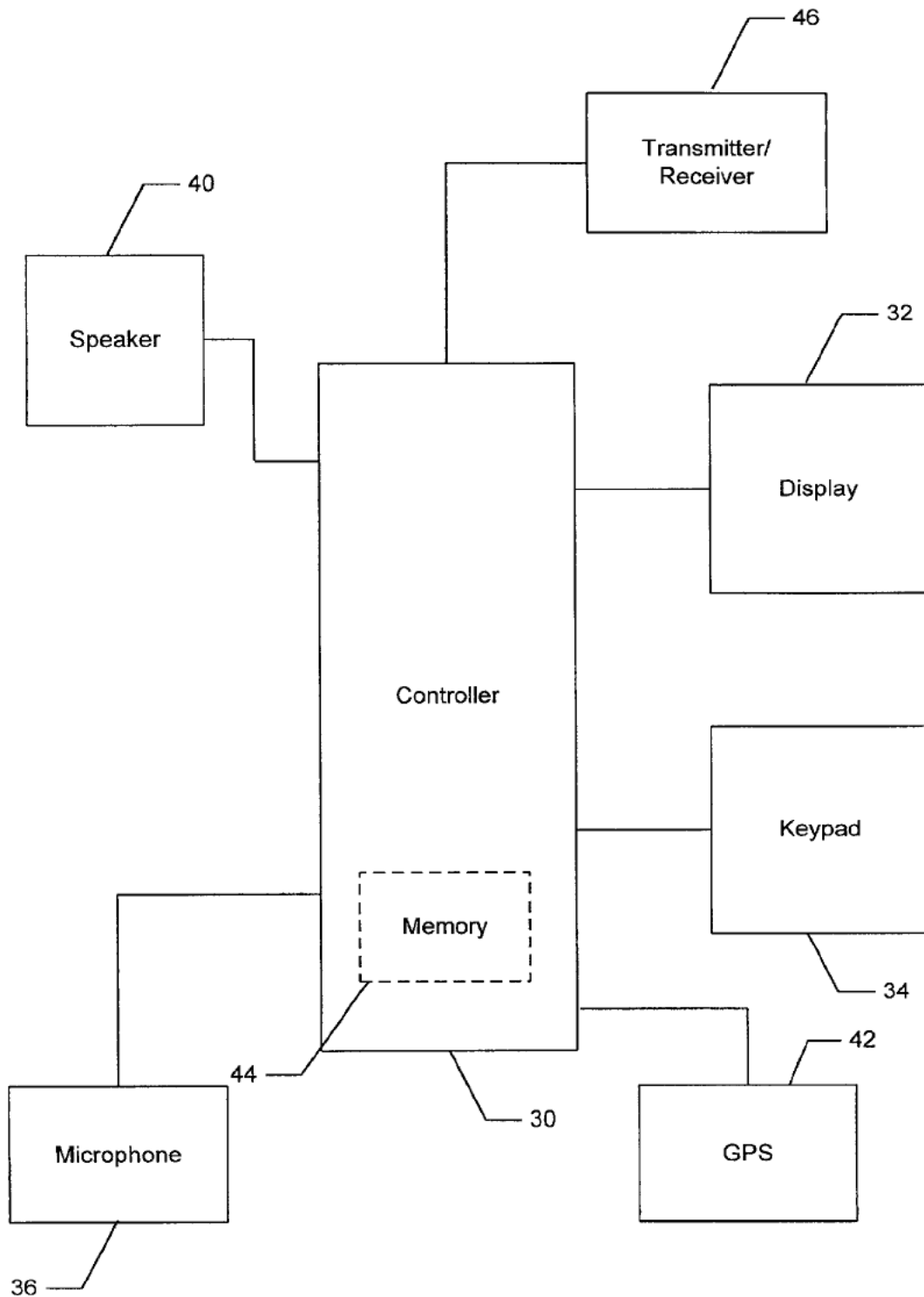


FIG. 2

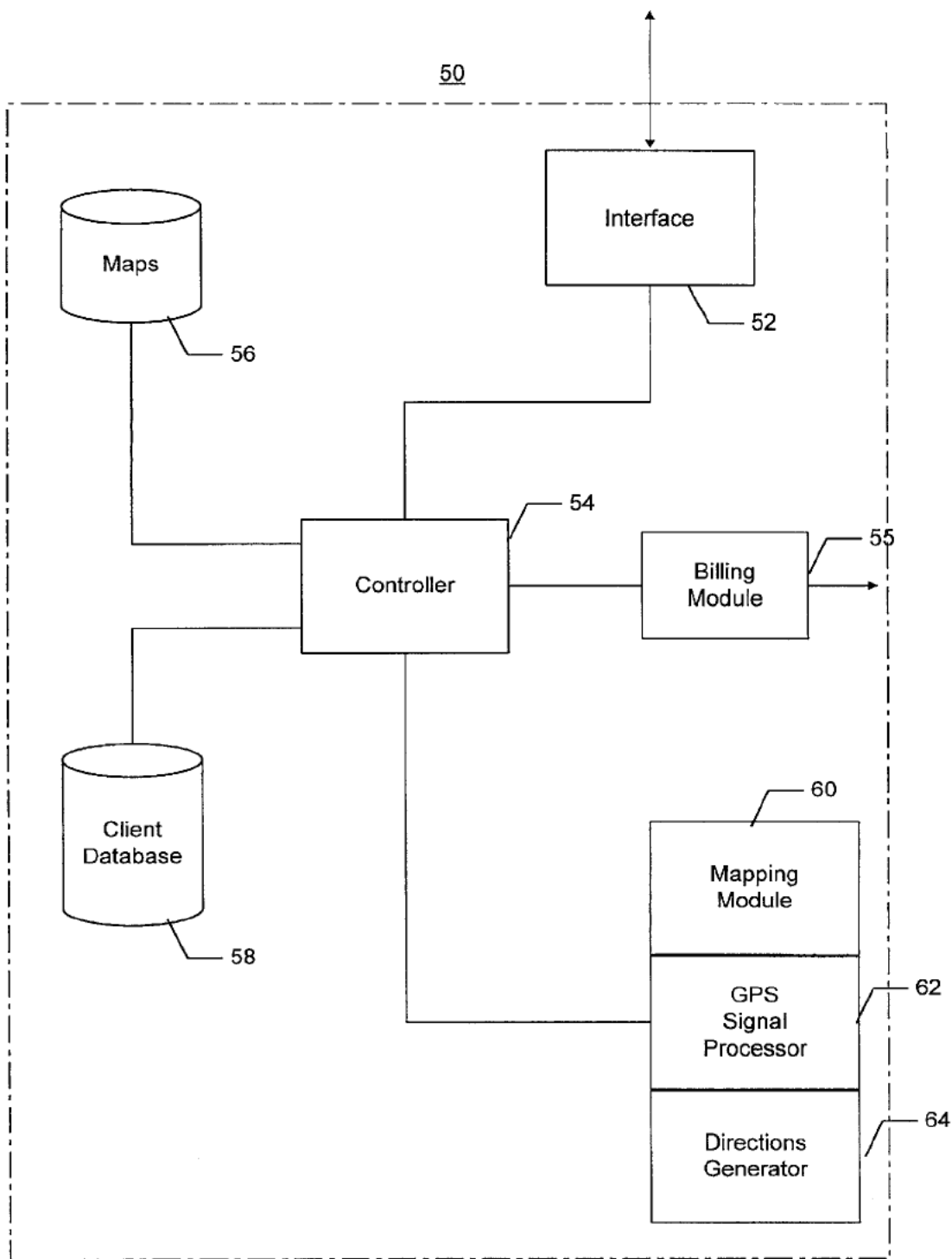


FIG. 3

DESTINATION CODE	STREET ADDRESS
(303) 555-1616	1212 Main Street
(303) 555-1617	103 Maple
(303) 555-1618	196 Oak
(303) 555-1619	143 Pine
(303) 555-1620	187 Willow
(303) 555-1621	962 Branch
(303) 555-1622	541 Birch
(303) 555-1623	631 Cyprus

FIG. 4

Explore Litigation Insights

Docket Alarm provides insights to develop a more informed litigation strategy and the peace of mind of knowing you're on top of things.

Real-Time Litigation Alerts



Keep your litigation team up-to-date with **real-time alerts** and advanced team management tools built for the enterprise, all while greatly reducing PACER spend.

Our comprehensive service means we can handle Federal, State, and Administrative courts across the country.

Advanced Docket Research



With over 230 million records, Docket Alarm's cloud-native docket research platform finds what other services can't. Coverage includes Federal, State, plus PTAB, TTAB, ITC and NLRB decisions, all in one place.

Identify arguments that have been successful in the past with full text, pinpoint searching. Link to case law cited within any court document via Fastcase.

Analytics At Your Fingertips



Learn what happened the last time a particular judge, opposing counsel or company faced cases similar to yours.

Advanced out-of-the-box PTAB and TTAB analytics are always at your fingertips.

API

Docket Alarm offers a powerful API (application programming interface) to developers that want to integrate case filings into their apps.

LAW FIRMS

Build custom dashboards for your attorneys and clients with live data direct from the court.

Automate many repetitive legal tasks like conflict checks, document management, and marketing.

FINANCIAL INSTITUTIONS

Litigation and bankruptcy checks for companies and debtors.

E-DISCOVERY AND LEGAL VENDORS

Sync your system to PACER to automate legal marketing.