

(19) World Intellectual Property Organization
International Bureau



(43) International Publication Date
24 November 2005 (24.11.2005)

PCT

(10) International Publication Number
WO 2005/110238 A1

(51) International Patent Classification⁷: A61B 05/02, 05/08

AT, AU, AZ, BA, BB, BG, BR, BW, BY, BZ, CA, CH, CN, CO, CR, CU, CZ, DE, DK, DM, DZ, EC, EE, EG, ES, FI, GB, GD, GE, GH, GM, HR, HU, ID, IL, IN, IS, JP, KE, KG, KP, KR, KZ, LC, LK, LR, LS, LT, LU, LV, MA, MD, MG, MK, MN, MW, MX, MZ, NA, NI, NO, NZ, OM, PG, PH, PL, PT, RO, RU, SC, SD, SE, SG, SK, SL, SY, TJ, TM, TN, TR, TT, TZ, UA, UG, US, UZ, VC, VN, YU, ZA, ZM, ZW.

(21) International Application Number:
PCT/IL2004/000417

(22) International Filing Date: 16 May 2004 (16.05.2004)

(25) Filing Language: English

(84) Designated States (unless otherwise indicated, for every kind of regional protection available): ARIPO (BW, GH, GM, KE, LS, MW, MZ, NA, SD, SL, SZ, TZ, UG, ZM, ZW), Eurasian (AM, AZ, BY, KG, KZ, MD, RU, TJ, TM), European (AT, BE, BG, CH, CY, CZ, DE, DK, EE, ES, FI, FR, GB, GR, HU, IE, IT, LU, MC, NL, PL, PT, RO, SE, SI, SK, TR), OAPI (BF, BJ, CF, CG, CI, CM, GA, GN, GQ, GW, ML, MR, NE, SN, TD, TG).

(26) Publication Language: English

(71) Applicant (for all designated States except US): MEDIC4ALL A.G [CH/CH]; Alpenstrasse 1, CH-6304 ZUG (CH).

(72) Inventor; and

Published:

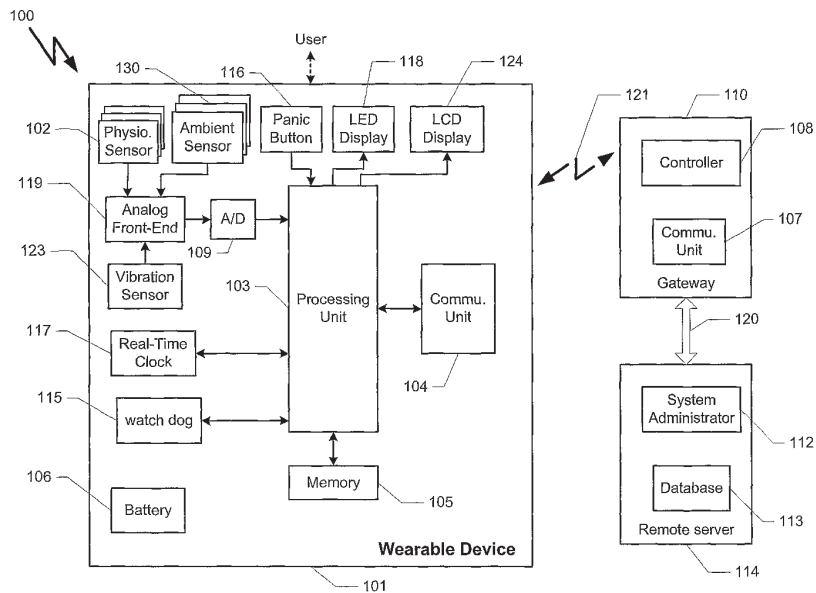
(75) Inventor/Applicant (for US only): GOLDREICH, Rami [IL/IL]; 96 Ayalon St., 48621 Rosh-Ha'ayin (IL).

— with international search report

(81) Designated States (unless otherwise indicated, for every kind of national protection available): AE, AG, AL, AM,

For two-letter codes and other abbreviations, refer to the "Guidance Notes on Codes and Abbreviations" appearing at the beginning of each regular issue of the PCT Gazette.

(54) Title: METHOD AND DEVICE FOR MEASURING PHYSIOLOGICAL PARAMETERS AT THE HAND



(57) Abstract: A wrist-mounted device (100) for measuring at least one physiological parameter of the user. The present invention enables such a measurement to preferably be transformed into clinically useful information about the user. Such information may then optionally be sent to medical personnel, for example at a contact and/or monitoring center. The measuring parameters may include blood pressure, ECG, location. The present invention can perform a Holter process over more than one physiological parameter.

WO 2005/110238 A1

**METHOD AND DEVICE FOR MEASURING PHYSIOLOGICAL
PARAMETERS AT THE HAND**

5 FIELD OF THE INVENTION

The present invention is of a method and device for measuring at least one physiological parameter of a subject at the wrist, preferably for extracting clinically useful information thereof. More specifically, the present invention is of a device which may be worn at the wrist of the subject with a strap or other fastening article,
10 and which may then be used to monitor the subject through measurement of the physiological parameter.

BACKGROUND OF THE INVENTION

Currently, a number of different types of devices are available for monitoring
15 human subjects in a non-invasive manner. For example, heart function can be monitored in a user through the use of electrodes, which must be attached to the skin of the user. Such equipment is very expensive, limiting its use to hospitals and other medical settings in which both the cost and the discomfort of the patient can be justified. Furthermore, patients may become anxious when examined by medical
20 personnel, thereby significantly altering the normal readings for these patients.

However, there are many different situations in which non-invasive monitoring of a human subject is desired. For example, such monitoring could be very useful as part of the overall health maintenance of the human subject, and could be used in order to detect deterioration of the physiological condition of the subject
25 before a concomitant deterioration in the health of the subject becomes noticeable.

Examples of adverse physiological conditions which could be detected with regular non-invasive monitoring include but are not limited to excessive weight gain or loss; arrhythmia and other heart conditions; incipient diabetes in the form of improper glucose metabolism; and loss of lung capacity or other problems with respiration.

5 Heart rate, Breathing rate, body temperature, oxygen level in the blood and blood pressure are important factors in determining the state of a person's health and the physical condition of a person's body especially if exposed to physical or emotional stress. Periodic monitoring of these physical parameters is particularly important for individuals having cardiac disease and/or lowered cardiac functioning or
10 high blood pressure. However, physically healthy individuals may also wish to periodically monitor their heart rate and blood pressure in order to monitor changes in their personal vital signs.

In order to support regular monitoring of human subjects in their normal environment, such as in the home and at the office for example, the equipment must
15 be non-invasive and easy to use. The equipment would then be able to monitor at least one physiological parameter of the user, without requiring the user to perform any complicated actions and/or to operate complex devices. Indeed, it would be highly preferred for the equipment to be incorporated as part of the regular daily living routine of the subject, since the requirement for any additional or special
20 actions on the part of human subject is likely to result in decreased compliance. In addition, the equipment should be robust yet inexpensive.

One example of such a device incorporates a wristband to attach a physiological sensor to the wrist of the subject. Currently, a number of different types of such wristband devices are available, most of which are intended to be used as
25 stand-alone devices to provide information about the subject's own physical

condition, mainly for heart rate and blood pressure. Most of these devices obtain such measurements by using an inflating cuff, which is bulky and awkward for the subject.

Wrist-mounted heart rate monitors are known to the art and have been disclosed, for example, in the patent to Orr et al, U.S. Patent No. 3,807,388, wherein the duration of a heart beat is measured by counting electrical pulses recurring at a known
5 frequency. The duration of the heartbeat is then related to a particular average heart beat rate. However, the disclosed measurement system does not directly measure the heart rate and, therefore, is subject to inaccuracies of measurement due to the instability of heart beat duration over brief intervals of time.

10 A blood pressure measuring device is disclosed in the patent to Petzke et al, U.S. Patent No. 3,926,179, in which a probe is applied adjacent to the radial artery of a wrist. A pressure-sensitive transducer on the probe generates electrical signals corresponding to the blood pressure pulses of the radial artery. The electrical pulses are applied to analog circuitry that generates a systolic signal corresponding to the
15 integrated voltage at the peak of the electrical pulse signal and a diastolic signal corresponding to the voltage at the low point of the pulse signal. The analog device of Petzke et al requires a substantial amount of power to operate and, therefore, is not suitable for use in a small, compact stand-alone device for being worn on the wrist.

A blood pressure and a heart rate measuring wrist watch is also disclosed in the
20 patent to Broadwater, U.S. Patent No. 4,331,154, in which a digital watch is employed to measure systolic and diastolic blood pressure as well as heart rate. The band of the watch supports a piezoelectric transducer that is held in contact with the wrist adjacent to the radial artery when a switch on the band is activated. The absolute values required for this method to evaluate blood pressure cause the device to be subject to
25 inaccurate readings, since the tissues of the hand and wrist may be expected to expand

and contract according to such factors as the time of day, and the condition of the external environment such as the atmospheric pressure. Such expansion or contraction may cause different degrees of tension on the wrist-mounted device, which is therefore not suitable for use without daily calibrations.

5 Other wrist-mounted devices are for wireless panic alarm systems, mainly for elderly people who live alone. These devices are usually shaped as a wristband or a pendant. Whenever the user becomes distressed, the user presses a panic button located on the device. The device then sends a digitally coded wireless message to a gateway device located nearby, usually in the same room, by using a unidirectional
10 wireless data communication link. The gateway device then contacts a manually operated contact center, for example with a land based or cellular telephone connection. A particular identifier for the user is usually sent first, after which the human operator is allowed to talk to the user through a speaker and to listen through a sensitive microphone located within the gateway. However, none of the above
15 systems contains any physiological measurement device within, in order to learn about the current physiological status of the user.

In such a situation as described above, the operator at the call center learns about the user's condition only by speaking with the user. However, this is only possible if the user is actually able to speak. High levels of background noise may
20 also prevent the user from being heard by the microphone of the gateway device.

SUMMARY OF THE INVENTION

The background art does not teach or suggest a device which can conveniently, non-intrusively and autonomously measure one or more physiological parameters, in order to extract medical information such as heart rate, breathing rate and blood pressure, and which may be worn on the wrist of the user. The background art also does not teach or suggest such a wrist-mounted device, which can measure such parameters and then send the information to a secured, automated databank (contact center) or call center containing medical personnel. The background art also does not teach or suggest such a wrist-mounted device which is compact, non-invasive, and light.

The present invention overcomes these deficiencies of the background art by providing a wrist-mounted device for measuring at least one physiological parameter of the user. The present invention enables such a measurement to preferably be transformed into medical information about the user, and/or displays the results on a LCD display. As used herein, the term "physiological parameter" refers to the signal which is received from the sensor, while the term "medical information" refers to the information which may be extracted or otherwise obtained by analyzing this signal and/or a combination of signals. Such information may then optionally be sent to medical personnel (for example at a contact monitoring call center) and/or to a remote secured, automated databank server usually Web based, through a gateway device. The gateway device preferably communicates with the wrist-mounted device of the present invention through a wireless communication channel.

The present invention has the option to display the medical information to the user on a local display, such that the user is optionally and preferably able to read the result locally. Examples of medical information which may be extracted from the

measured physiological parameter or parameters include, but are not limited to: heart rate; variability in heart rate; breathing rate; arrhythmia of the heart (if any), as well as the general rhythm and functioning of the heart; blood pressure; presence of abnormal body movements such as convulsions for example; body position; general body
5 movements; body temperature; presence and level of sweat; oxygen pressure in the blood; and glucose levels in the blood.

Optionally and more preferably, the present invention also features an alarm signal for being transmitted through the gateway device in order to indicate an emergency or otherwise dangerous situation for the user. The alarm signal may
10 optionally be transmitted according to a manual action of the user, such as pressing a “panic button” for example.

Upon receipt of the manually activated alarm signal, the gateway would preferably initiate immediately a call to a human operated call center. Then the device would preferably automatically collect one or more current measurements of
15 physiological parameters of the user. These measurements may be sent directly to the gateway, or alternatively may be analyzed in order to compute the medical information of the user before sending the results to the gateway. The human operator would then preferably be able to assess the user’s medical condition from the received information.

20 Most preferably, the alarm signal is transmitted automatically upon measurement of one or more physiological parameters of the user, even if the user is unable to press the panic button. Optionally, the alarm signal may be given to the user, additionally or alternatively, for example by sounding an audible alarm, more preferably from the wrist-mounted device itself.

The device of the present invention also monitors, at least periodically or continuously, one or more physiological parameters of the user. Continuous monitoring would more easily enable the device to transmit the alarm signal if one or more physiological parameters are determined to be above predefined criteria, which
5 may represent such medical information as unstable or excessive heart rate, or very high or low blood pressure.

According to an exemplary embodiment of the present invention, the wrist-mounted device features one or more sensors attached to a wristband or other fastening article. The sensor(s) may optionally be connected to a microprocessor,
10 optionally by a wire but alternatively through a wireless connection. The microprocessor may optionally also be located within the wristband, or otherwise attached to the wristband. The sensor(s) may optionally support automatic collection of the measurement of the at least one physiological parameter, while the microprocessor is able to execute one or more instructions for extracting medical
15 information about the user from such measurement(s).

The microprocessor more preferably operates a software program to process and analyze the data which is collected, in order to compute medical information. The extracted information, optionally also with the raw data, is then preferably transferred to the previously described gateway device. The gateway device may
20 optionally relay such information to a remote server, which more preferably is able to provide such information to medical personnel, for example as part of a contact center. Therefore, continuous monitoring of the medical information and/or physiological parameters of the user may optionally and more preferably be made, enabling better medical care for the user. According to the present invention there is
25 provided a device for measuring at least one physiological parameter of a subject,

comprising: (a) a fastening article for being fastened to a wrist of the user; (b) a sensor for measuring at least one physiological function of the user, the sensor being in contact with at least a portion of the wrist and the sensor being attached to the fastening article; and (c) a processor for receiving a signal from the sensor and for
5 converting at least one measurement to form the at least one physiological parameter. Optionally, the data may be stored on a non-volatile memory for being downloaded later by the user or by an operator.

According to another embodiment of the present invention, there is provided a system for measuring at least one physiological parameter of a subject, comprising:
10 (a) a device for measuring the at least one physiological parameter, comprising: (i) a fastening article for being fastened to a wrist of the user; (ii) a sensor for measuring at least one physiological parameter of the user, the sensor being in contact with at least a portion of the wrist and the sensor being attached to the fastening article; (iii) a communication unit for at least transmitting data; and (b) a gateway device for
15 receiving the transmitted data for being monitored.

According to another embodiment of the present invention, there is provided a method for monitoring a physiological parameter of a user, comprising: providing a device for monitoring the physiological parameter, the device being attached to at least a portion of the user at a pulse point of the user; monitoring the physiological
20 parameter through the pulse point; and if a level of the physiological parameter of the user is outside of an expected range, transmitting an alarm.

According to still another embodiment of the present invention, there is provided a device for measuring at least one physiological parameter of a subject, comprising: (a) a fastening article for being fastened to a wrist of the user; (b) a
25 piezoceramic sensor for measuring at least one physiological parameter of the user at

a pulse point of the wrist and the sensor being attached to the fastening article; and (c) a processor for receiving a signal from the sensor and for converting the at least one measurement to form medical information.

Hereinafter, the term “microprocessor” includes, but is not limited to, general-
5 purpose microprocessor, a DSP, a micro-controller or a special ASIC designed for that purpose.

Hereinafter, the term “wrist” includes, but is not limited to, the lower forearm from the elbow to the hand, inclusive, unless otherwise noted.

The method of the present invention could be described as a process for being
10 performed by a data processor, and as such could optionally be implemented as software, hardware or firmware, or a combination thereof. For the present invention, a software application could be written in substantially any suitable programming language, which could easily be selected by one of ordinary skill in the art. The programming language chosen should be compatible with the computational device
15 (computer hardware and operating system) according to which the software application is executed. Examples of suitable programming languages include, but are not limited to, Visual Basic, Assembler, Visual C, standard C, C++ and Java.

BRIEF DESCRIPTION OF THE DRAWINGS

The invention is herein described, by way of example only, with reference to the accompanying drawings, wherein:

FIG. 1 is a schematic block diagram of a system according to the present invention;

FIG 2 shows an exploded view of the device;

FIG 3 describes a general state flow diagram;

FIG 4 describes a bi-directional message format between the device and the gateway;

FIG 5 shows an exploded view of an exemplary device with ECG option;

FIG. 6 shows an exploded view of an exemplary device, which illustrates the installation of a SpO2 sensor;

FIGS. 7A-7D show diagrams of external views of different parts of the illustrative blood pressure monitoring device according to the present invention;

FIG. 8 shows a schematic block diagram of a system according to the present invention featuring the blood pressure monitoring device of Figure 7;

FIG. 9 is a flowchart of an exemplary method according to the present invention for performing an extended cardiac monitoring task; and

FIG. 10 is a flowchart of an exemplary method according to the present invention for synchronizing a medical care management function of the device according to the present invention with a central care facility.

DESCRIPTION OF THE PREFERRED EMBODIMENTS

The present invention is of a wrist-mounted device for measuring at least one physiological parameter of the user. The present invention enables such a measurement to preferably be transformed into medical information about the user. 5 Such information may then optionally be sent to medical personnel (for example at a contact monitoring center) and/or to a remote server, through a gateway device. The gateway device preferably communicates with the wrist-mounted device of the present invention through a wireless communication channel.

Examples of medical information which may be extracted from the measured 10 physiological parameter or parameters include, but are not limited to: heart rate; regularity in heart rate; breathing rate; I/E ratio; arrhythmia of the heart (if any), as well as the general rhythm and functioning of the heart; blood pressure; presence of abnormal body movements such as convulsions for example; body position; general body movements; body temperature; presence and level of sweat; oxygen saturation in 15 the blood; and glucose levels in the blood.

Optionally and more preferably, the present invention also features an alarm signal for being transmitted through the gateway device in order to indicate an emergency or otherwise dangerous situation for the user. The alarm signal may optionally be transmitted according to a manual action of the user, such as pressing a 20 "panic button" for example.

Most preferably, the alarm signal is transmitted automatically upon measurement of the one or more physiological parameters of the user, preferably even if the user is unable to press the panic button. Optionally, the alarm signal may be given to the user, additionally or alternatively, for example by sounding an audible 25 alarm, more preferably from the wrist-mounted device itself.

An exemplary embodiment of the present invention may measure also parameters that may affect the subject's physical condition, including but not limited to ambient temperature and humidity, lighting conditions, smoke and/or other material in the air, distance from home etc.

5 Upon receipt of the manually/automatically activated alarm signal, the gateway would preferably initiate immediately a call to a human operated call center. Then the device would preferably automatically collect one or more current physiological measurements of the user. These measurements may be sent directly to the gateway, or alternatively may be analyzed in order to compute the medical parameters of the
10 user before sending the results to the gateway. The gateway may also analyze the measurement, for example when the measurements are transferred directly to the gateway. The human operator, at the medical center, would then preferably be able to assess the user's medical condition from the received information. It should be noted that the terms "medical center" and "call center" are used interchangeably herein.

15 The device of the present invention may also monitor, at least periodically but more preferably continuously, the value or condition of one or more physiological parameters of the user. Continuous monitoring would more easily enable the device to transmit the alarm signal if measurements of one or more physiological parameters are collected and analyzed by the microprocessor to form medical information, which
20 then could be determined to be above predefined criteria, such as unstable heart rate, or very high or low blood pressure, for example.

 According to a non-limiting exemplary embodiment of the present invention, the wrist-mounted device features one or more sensors attached to a wristband or other fastening article. The sensor(s) are preferably connected to a microprocessor,
25 optionally by a wire but alternatively through a wireless connection. The

microprocessor may optionally also be located within the wristband, or otherwise attached to the wristband. The sensor(s) preferably support automatic collection of at least one physiological measurement; more preferably, the microprocessor is able to execute one or more instructions for extracting clinically useful information about the user from such measurement(s).

The microprocessor more preferably operates a software program to process and analyze the data which is collected, in order to compute medical information. The extracted medical information, optionally also with the raw data, is then preferably transferred to the previously described gateway device. The gateway device then preferably relays such information to a remote server, which more preferably is able to provide such information to medical personnel, for example as part of a call center. Therefore, continuous monitoring of the physiological parameters of the user may optionally and more preferably be made, enabling better medical care for the user.

A general, non-limiting example of suitable methods for measuring the heart rate and/or other heart-related physiological parameters of a subject who is wearing the device according to the present invention may be found in the article "Cuff-less Continuous Monitoring of Beat-To-Beat Blood Pressure Using Sensor Fusion", by Boo-Ho Yang, Yi Zhang and H. Harry Asada – IEEE (also available through <http://web.mit.edu/zyi/www/pdf/IEEETrans2000.pdf> as of December 9, 2001), hereby incorporated by reference as if fully set forth herein, where systolic and diastolic blood pressure are calculated using the pulse pressure shape per heartbeat. The disclosure does not describe a device which has the functionality according to the present invention, but the disclosed method is generally useful for determining blood

pressure from an external measurement of pressure from the pulse through the skin of the subject.

According to exemplary embodiments of the present invention, there is provided a device for measuring at least one physiological parameter of a subject in addition to blood pressure. The device preferably comprises a band for being fastened 5 to a wrist of the user, which is also associated with a blood pressure cuff. The device also features at least one additional sensor for measuring at least one additional physiological parameter of the user, as well as a processor for receiving a signal from the sensor and a signal from the blood pressure cuff and for converting said signals to 10 form medical information. Therefore, the device preferably combines the functionality of a portable blood pressure cuff with at least one other type of physiological measurement in order to assess the medical condition of the user.

Since the device is portable, it may optionally be used for a number of different embodiments. For example, it may optionally and preferably be used for 15 performing a Holter monitoring process, in which one or more physiological measurements (preferably including at least one cardiac physiological parameter) are measured over an extended period of time, such as 24 hours for example. Currently available Holter devices are clumsy and difficult to use, and also may impede daily living tasks of the user. In addition, the present invention also preferably features 20 electronic input and/or display, which enables actions of the user (for example during the Holter task) to be input by the user at least semi-automatically, for example through selection from a menu shown on the display. The display may also optionally (additionally or alternatively) feature such information as reminders about appointments with medical personnel and/or times to take medication, and/or alerts to 25 the user (for example from a medical center).

Preferably, as described above, the device is also in communication with a medical center, to pass the medical information collected about the user to the medical center and also more preferably to transmit information from the medical center to the user through the device.

5 For implementing the Holter task and/or other types of cardiac measurements, preferably the at least one additional sensor of the device includes an electrocardiogram (ECG) sensor, which preferably at least one electrode associated with the band of the device. Optionally, the band features at least a rigid portion and the electrode is associated with the rigid portion. Also optionally and preferably, the at
10 least one electrode is organized into a set of two or more electrodes, such that only one electrode is required to be in contact with the wrist of the user at any particular time.

The device may also optionally and preferably feature a locator unit for locating the device (and hence the user), in the case that the user is unable to
15 communicate his or her location. The locator unit may optionally comprise a GPS unit.

The principles and operation of a device and method according to the present invention may be better understood with reference to the drawings and the accompanying description.

20 Referring now to the drawings, Figure 1 is a schematic block diagram of a system according to the present invention. As shown, a system **100** features a wearable device **101** to be worn by a user, preferably as a wrist-mounted device, for example by being attached with a wristband or other fastening article to the wrist of the user. Device **101** features at least one physiological sensor **102** for measuring at

least one physiological parameter of the user. The function of an exemplary sensor **102** is described in greater detail below.

The device **101** may optionally feature a vibration sensor **123**, preferably a piezoceramic sensor, which is not in direct contact with the skin of the user. Sensor **123** measures the movement of the wrist. The output of sensor **123** can be used by a processing unit **103** to capture the movement of the wrist and to recover some noise received by sensor **102**, which is caused by such movement.

Optionally, the output of vibration sensor **123** may record some breathing movements thus enabling the processing unit **103** to calculate the breathing rate, when the user's wrist with the device **101** is placed over the user's abdomen or chest for a period of time.

Device **101** may include additional ambient sensors **130** or additional measuring routines for measuring other parameters. For example, device **101** may optionally have a humidity sensor for measuring the ambient humidity. An exemplary humidity sensor may be the Humidity Gauge manufactured by Honeywell.

In order to support processing of the measured physiological parameter or parameters, processing unit **103** may optionally include internal RAM and non-volatile program memory (not shown). Also processing unit **103** may optionally include an extended data memory **105** located externally to processing unit **103**. Processing unit **103** preferably executes at least one instruction for processing the data obtained by sensor **102**.

Examples of such processing units **103** include but are not limited to MSP430 by TI company, which contains some channels of 12 bit A/D converters, a 2K bytes of internal RAM and 64K Bytes of non-volatile program memory.

Extended memory component **105** is preferably an electrically erasable non-volatile serial external memory component. Examples of such a memory component include but are not limited to FM24CL64-S (Ramtron, USA), with 64Kbit of fast access read/write serial memory for storing temporary data related to the sampled
5 physiological parameter.

Device **101** may optionally feature a real time clock **117** in order to provide an accurate time and date for each measurement, as device **101** can optionally store a few measurements before transmitting such data and/or information to a gateway device **110**, as described in greater detail below. Stored data and/or information may also
10 optionally be used for such applications as reminding the subject to take medication, perform a prescheduled measurement, and so forth. An A/D converter **109** with multiple inputs is also optionally and preferably present if sensor **102** is an analog sensor, in order to convert the analog signal to a digital signal.

Device **101** preferably features an internal communication unit **104**, for at least
15 unidirectional, but more preferably bi-directional, communication with gateway device **110**. Gateway device **110** may feature a communication unit **107**. Communication unit **104** may optionally communicate with communication unit **107** through a wire or alternatively through a wireless communication link **121**. According to a non-limiting exemplary embodiment of the present invention, gateway device **110**
20 is located relatively close to the user and hence to device **101**, for example by being located at the user's premises. As a non-limiting example, gateway device **110** could optionally be installed in the home of the user.

Gateway device **110** also optionally and preferably features a controller **108** for controlling functions of gateway device **110**, such as communication with device
25 **101** for example.

Gateway device **110** preferably communicates with a remote server **114** through a data link **120**, which could optionally be a direct dial-up modem connection with DTMF coding or TCP/IP using regular LAN or modem connection to an ISP, for example. In any case, data link **120** may optionally be a wired or wireless link, for example through a cellular telephone and/or land-based telephone system, or a combination thereof.

Remote server **114** may be controlled by a system administrator **112**, which may be a person (for manual operation) or a software program (for automatic operation), or a combination thereof. Remote server **114** also preferably features a database **113** for storing data received from gateway device **110**.

Device **101** may also feature a manually operated panic alarm button **116** to be manually activated by the user, for example if the user is in distress. Device **101** may also optionally feature a LED display **118**, for example in order to indicate of alert activation or a low battery level.

Physiological sensor **102** is preferably part of a sensor assembly. Without the intention to limit in any way, the following discussion centers on such a physiological sensor **102**, which contains a piezoceramic transducer for generating an electrical signal, having amplitude corresponding to the magnitude of applied pressure. Therefore, if at least a portion of the transducer is located adjacent to, or fasten by a fastening article to, and in physical contact with, an area of the wrist where blood pressure pulses may be detected, the transducer generates electrical pressure pulses corresponding to the detected blood pressure pulses. Each of the electrical pressure pulses preferably defines a maximum voltage over a systolic interval and a minimum voltage over a diastolic interval.

Although a piezoceramic sensor is used as a force transducer according to a preferred embodiment of the invention, it should be appreciated that other transducers known to the art may be employed without departing from the spirit of the invention. Examples of such sensors include but are not limited to piezoelectric transducers,
5 resistive strain gauges and pressure sensor.

The piezoceramic transducer is desirable for the present invention since the transducer measures the direct effect of the pressure exerted within the radial artery, while other transducers, for example resistive strain gauges, measure secondary effects such as the strain forces that are applied at the surface of the skin due to the
10 expansion of the radial artery. Piezoceramic transducers are also cheaper than piezoelectric transducers but still produce a high-quality signal.

As shown with regard to Figure 1, the analog output of sensor **102** is first preferably treated by an analog front-end **119**, which more preferably contains analog selector to select the appropriate sensor followed by an analog filter (not shown). As
15 a non-limiting example, this analog filter preferably has a cutoff of about 20Hz, a linear phase response, a flat amplitude response up to 10Hz and an amplification of about 3 for acquiring the full spectrum of a typical blood pressure pulse. The filtered signal then enters A/D converter **109**.

Processing unit **103** preferably controls the operation of A/D converter **109**.
20 When a physiological measurement is initiated, A/D converter **109** starts sampling the filtered analog signal of sensor **102** from analog front-end **119**, preferably at a rate controlled by processing unit **103**. This rate is optionally and more preferably 80 samples per second as to over sample the data by a factor of 4 to maintain a good quality sampled signal. A/D converter **109** preferably transfers the analog data into a
25 digital coded word, optionally at resolution of 12 bits per sample, for example.

An exemplary measuring period may be about 50 seconds in which data is gathered at processing unit **103**. Processing unit **103** preferably operates a software program for examining the validity of the sampled data, in order to determine whether the data contains some indications of legitimate physiological data (such as of a blood pressure pulse of an artery) or alternatively whether the data contains only noise or poor readings. In the second case, A/D converter **109** preferably starts sampling the signal again in order to obtain data for measurement. This process preferably continues until the software determines that sufficient valid data has been collected or after a few successive rejections (usually after 3 times).

10 Then, the software program preferably performs an algorithm for calculating some medical parameters from the sampled data, such as the calculation of systolic and diastolic blood pressure using a method as disclosed in US Patent No. 4,418,700, which is hereby incorporated by reference as if fully set forth herein. The software program may be also located within gateway and/or the remote server.

15 The calculated parameters are then preferably stored in memory **105**. The data stored in memory **105** is preferably transmitted to gateway device **110** periodically, or alternatively or additionally after manual operation of panic button **116**.

The calculated parameters are also optionally and preferably displayed on a local display **124** such as LCD, so the user can view the last medical results locally.

20 More preferably, data for all medical parameters that are sent to remote server **114** are sent according to a security protocol (such as but not limited to HIPAA protocol) for maintaining the privacy of the user.

Furthermore, the software program preferably performs another algorithm for generating an alert if the medical parameters have values beyond or otherwise outside
25 of the normal expected values.

Although a one-way link from device **101** to gateway device **110** may be used, device **101** preferably features a two-way communication link as shown for link **121**, for establishing more reliable communication with gateway device **110**. Examples of communication units **104**, **107** include but are not limited to an RF401 UHF
5 transceiver (Nordic), which operates in the universal ISM band (433.92Mhz), an infrared transceiver, and a “Bluetooth” protocol enabled-transceiver operating bi-directionally in the 2.4GHz band.

Device **101** preferably has its own unique identifier, stored in non-volatile data storage, more preferably in memory **105**. Each time device **101** sends a wireless
10 message to gateway device **110**, device **101** also preferably sends the unique identifier to gateway device **110**, although optionally the identifier may be sent only periodically, for example once per day. Gateway device **110** also preferably sends a message to a particular device **101** by including the device identifier in the message, thereby specifying which such device should receive the message.

15 As previously described, device **101** preferably has its own real time clock **117**. For periodic monitoring of the user, real time clock **117** is preferably used to provide a time tag for each set of results. This time tag is very important for continuous monitoring of the user for long periods of time. By examining the data recorded over of the user for long period of time, a change or alteration in the health
20 condition of the user may be detected. Real time clock **117** may optionally be implemented by separate hardware such as RTC8564 (EPSON, US) for example, or alternatively by a software program for operation by processing unit **103**.

In some embodiments of device **101** the output of real time clock **117** may be displayed on one of displays **118** or **124** for displaying the date and time.

Device **101** may also optionally feature a watchdog **115**, which monitors the function of device **101**. If the end of a watchdog time period is reached, device **101** is assumed to have a fault in its operation, and a master reset is preferably initiated automatically.

5 Device **101** also preferably features a power source such as a battery **106**, which powers device **101**. Examples of suitable batteries include but are not limited to the silver oxide coin battery model 386 (Panasonic, Japan) having 150mAh in capacity with a pulse burst of 75mA for a short period of time (about 5 sec for each pulse). Battery **106** optionally and preferably contains enough energy to power the
10 device for more than one year of operation without being replaced.

Figure 2 shows an exploded view of an exemplary device according to Figure 1. As shown, the device features sensor **102**, shown with the preferred but exemplary implementation of a piezoceramic sensor as previously described. The device also optionally and preferably features battery **106**, and a push button **316** (for optional
15 implementation of the panic button of the device of Figure 1). Battery **106** may optionally be replaced with a plurality of smaller batteries (not shown). The device preferably features a processor **314** (which may optionally be similar or identical to the processing unit of the device of Figure 1. The components of the device are preferably held by a case **306**.

20 For this exemplary implementation, sensor **102** is in physical contact with an anvil **300** via a protrusion **302**. Protrusion **302** is welded, optionally by a laser, on one side to the center of anvil **300** and on the other side to the center of sensor **102**. Anvil **300** is pressed against the skin of the wrist of the subject (not shown), more preferably at a pulse point. Anvil **300** may optionally be a rigid disk made for example of
25 polymer, or optionally a metal, such as gold plated copper or stainless steel, for

example. Of course, any other type of suitable material, or combinations of materials, may also optionally be used. Anvil **300** therefore collects and integrates the pressure waves, which are associated with each pulse of the blood of the subject, from the area below anvil **300**. This pressure is preferably transferred from the center of anvil **300** to the center of sensor **102** via protrusion **302**. Sensor **102** then emits voltage to form a signal, preferably according to a linear output. By using this architecture, the present invention may measure the blood pressure pulse without blocking the blood flow in the artery.

This signal is then received by processor **314**, which preferably extracts medical information from the measurement of the physiological parameter. Processor **314** optionally and preferably features a crystal oscillator **312**, for stabilizing the internal clock of processor **314**. Processor **314** may communicate with the real time clock of the device (not shown). Also not shown are the extended memory, transceiver (communication unit), A/D converter and analog front end of the device.

Processor **314**, oscillator **312** and push button **316** are all preferably mounted on a PCB board **308**. PCB board **308** is then preferably sandwiched between battery **106** and a device cover **304**. Device cover **304** preferably features a soft portion, which may be rubber for example, for enabling the user to locate and depress the panic push button through push button **316**.

An o-ring **310** is preferably used for waterproof sealing between cover **304** and the case **306** of the device. Anvil **300** then is held between sensor **102** and the skin of the user (not shown), for example.

According to an alternative implementation of the device of Figures 1 and 2, sensor **102** and anvil **300** could optionally be located in the wristband for affixing the device to the wrist of the user (not shown).

Figure 3 is a state flow chart of the operation of the device. As the device software begins operation for the first time, the software preferably makes some initializations using default values. Once the device has been initialized, the software preferably triggers a watchdog function shown as a **“Watchdog”** process, and then enters a sleeping mode for saving battery life, shown as a **“Sleep”** process.

If the end of a watchdog time period is reached, the device is assumed to have a fault in its operation, and a master reset is preferably initiated automatically. The device is preferably “woken up” according to one of three triggers. First, the device is preferably woken up when the user presses an activation button (the panic button 116 in figure 1 c can be used as the activation button) manually for a few seconds. This process is shown by the **“Alarm”** state. The device then preferably immediately starts a transmission to the gateway device, containing a distress indication and the device identifier. Then the device enters a receiving mode for a few seconds, waiting for acknowledge (ACK) from the gateway device. This process is shown as a **“TX/RX”** state.

If the acknowledge message is not received within this period of time a repeated message is initiated. Additional transmissions are initiated, if necessary. However, if after a predefined number of repeated times an acknowledge message is not received, an error message is stored within a log and no more tries are made. More preferably an indication is displayed on the display screen for a few seconds, optionally with an audible alarm. Then, the process returns to the **“Sleep”** state. However, if the received ACK contains no commands the device returns to the **“Sleep”** state, otherwise the device does the command and sends an ACK to the gateway. The gateway returns an ACK with another command to continue or without

a command to terminate this process. After doing the last command the device returns to the “**Sleep**” state.

Second, when the user presses the activation button manually for a short period of time, the process turns to “**Supervise**” state, where the device collects data
5 from its sensors, preferably calculates some medical information concerning the current physiological status of the user. Then, the device turns into “**Tx/Rx**” state, where the device transmits a message containing the identifier, and the raw measured data and/or the calculated medical parameters. And if the received ACK contains no commands the device returns to the “**Sleep**” state, otherwise the device does the
10 command and sends an ACK to the gateway. The gateway returns an ACK with another command to continue or without a command to terminate this process. After doing the last command the device returns to the “**Sleep**” state.

In the third case where the device exits its “**Sleep**” state, an external real time clock signals the device to execute an automatic check. Then, the process enters
15 “**Supervise**” state as discussed in the above paragraph, only that this time for saving battery life, the device initiate the “**Tx/Rx**” process only once for a few successive times sending all the accumulated data in one transmission. Then, the device preferably enters a “**Sleep**” state unless the measured parameters exceed a predefined threshold at least once, but preferably for a few successive measurements. In this
20 case, the device initiates an automatic alarm entering the “**Alarm**” state, if the device has permission to do so, as previously described.

When a timer for a supervise process has been running or after an alarm, the device preferably exercises an automatic check as described above, and after that initiates a transmission to the gateway device including all the data collected after the
25 last transmission. Then the device preferably waits for acknowledge, preferably

repeating the transmission again if not receiving such an acknowledge message. In the acknowledge message, a command for the device can be stored. In such a case the device performs this command and then the device sends an acknowledge message to the gateway device. This process may optionally continue until an acknowledge
5 message without a command is received, after which the device preferably returns to sleep mode.

Other exemplary embodiment may use additional routines and modes, such as a mode that verifies whether the user is in the user's premises for example. This mode is optionally initiated every few minutes and transmits a short transmission to the
10 gateway. The gateway waits for those signals and if in a certain window of time, for example 30 minutes, a transmission has not been received, the gateway calls the medical center and reports that the user is missing.

Figure 4 describes an exemplary message format for exchanging messages between the device and the gateway device. Every message preferably starts with a
15 preamble STX byte (hex 7E), followed by a byte which contains the number of bytes in the current message, and three bytes of address, followed by a command byte and its corresponding data bytes. This is followed by two bytes of CRC and an ETX byte (hex 7B).

As such, the message is a variable length message with strong error detection
20 and correction method for enhanced communication reliability. Each message optionally and preferably contains a low battery indication, if necessary.

In case of a unidirectional communication link between the device and the gateway, a repeated message is preferably transmitted for a predefined number of times, such as 20 times for example, after which the device preferably enters a
25 sleeping mode if no answer is received.

In case of a bi-directional link, for each message sent to the gateway device, an acknowledge message is preferably returned by the gateway device and vice versa. This message may also contain a command for the device encoded in the CMD byte within the message. Commands could optionally include, but are not limited to, one or
5 more of the following:

- 1) Get/ Set service type
- 2) Get/Set device ID
- 3) Set interval between successive medical checking
- 4) Set interval between successive supervision transmissions
- 10 5) Set Time and date
- 6) Set threshold for automatic alerts
- 7) Set device calibration

Each time the device sends a message to the gateway, the device may optionally contain a Battery OK/Battery Low indication for the battery situation. This
15 signal preferably appears three months before the battery finishes, enough time to ask the user to replace the battery.

Each time the device sends a supervise-type message to the gateway, the device preferably sends also all the medical data stored in its memory with that message.

20 Each time the gateway device sends a command back to the device, the device preferably returns an acknowledge message with a 3 bit message serial number to the gateway device, in order to fulfill a full handshake between the two. If the gateway device does not receive acknowledge from the device within a few seconds, the gateway device preferably sends its transmission message again with the same serial
25 number. The message may even be repeated a few times, each time waiting for

acknowledge. If acknowledge is not received, a logbook is updated with an error message, and more preferably an indication LED is turned on for error indication.

Figure 5 shows an exploded view of a device **500** according to exemplary embodiments of the present invention. In addition to, or in place of, measuring blood pressure, device **500** may optionally measure other activities of the body including but
5 not limited to ECG, tonus activity, breathing rate, body temperature and the SpO2 (oxygen saturation in the blood) value in the blood of the user, for example.

Device **500** in Figure 5 may be similar to an expanded wristwatch in shape, where bottom anvil **510** is the section which lies flat against the wrist. This forms the
10 base of device **500** whose center is lower case **550**. All other components are built onto lower case **550**, culminating at the top with face-plate **557**, upon which are mounted a number of additional components including sensors.

Sensor **540** is optionally and preferably attached to lower case **550** of device **500** by two arcs **530** and **531**. Each arc **530** and **531** preferably has a vertical portion
15 and a horizontal portion. The horizontal portion is preferably placed between sensor **540** and anvil **510**, and is pressed against lower case **550** holding sensor **540** in place. The vertical portions of arcs **530** and **531** are preferably affixed into an appropriate slot in lower case **550** of device **500**.

Lower case **550** may optionally have one or more electrical boards **554** and
20 **556** that comprise the electrical circuitry, which is disclosed in conjunction to in Fig. 1 and or Fig. 5, of the device including batteries **553**. A vibration sensor (an accelerometer) may optionally be connected to one of boards **554** or **556**.

Device **500** is preferably covered by a top cover **557**, that optionally and more preferably has two electrodes **560** and **561**, SpO2 sensor **566** and optionally a single

push panic button **558** that is preferably pressed by the user upon commencement of a measurement period, or if the wearer presses panic button **558** .

Pressing the flexible portion **563** within top cover **557** causes panic button **558** to be pushed, and preferably initiates an automatic process within device **500**, then
5 device **500** may initiate the panic thread and/or optionally start a measuring thread and transmits a set of results to gateway **110**. Gateway **110** optionally and preferably stores those results and upon establishing the connection with the call center, gateway **110** transmits the results to the call center. The panic thread starts by establishing a connection with the call center via gateway **110** (Figure 1).

10 In other embodiments, the panic thread starts upon pressing a ctivation push button **558** for long period of time (e.g. above few seconds, 5, 6 etc.), thereby initiating a call to medical center. In contrast, pressing activation push button **558** for a short period of time, for example shorter than a second, starts an automatic measuring thread. It should be noted that the terms “activation push button”, “panic
15 push button”, "panic button" or “push button” may be used interchangeably herein

The measuring thread optionally and preferably starts by scanning the available sensors **102** for a first sensor **102** that produces a valid signal (see Figure 1). A valid signal is defined as a signal that meets predefined requirements including but not limited to, one or more of the signal amplitude being within a certain range,
20 frequency being within a certain range and so forth. The valid signal is processed by the appropriate analog front-end **119** and processing unit **103** (see Figure 1).

Upon receiving the awakening signal from a timer within the real time clock, device **500** may inform the user that a measuring process is initiated. Upon terminating the measurements, the results are sent to the remote server **114** (FIG. 1)
25 via gateway **110**.

Two bands **574** and **576** are optionally connected to lower case **550** and are preferably used to fasten the device to the wrist of the user. The long band **576** may optionally have a flexible conductive wire (not shown) which functions as an antenna, and which is connected to the transmitter of the communication unit **104**, inside
5 device **500**, while the far end of long band **576** may comprise temperature sensor **580** connected by pair of wires (not shown) to the internal circuitry, both of which are described in greater detail below.

Device **500** may optionally be used to measure blood pressure pulse using piezoceramic transducer **540** to generate an electrical signal. The amplitude of the
10 electrical signal from piezoceramic transducer **540** corresponds to the magnitude of pressure applied thereto. Piezoceramic transducer **540** may be a common piezoceramic buzzer, made of PZT material, and may optionally and additionally be used as a common buzzer, which receives the alarm signals from processing unit **103** (see figure 1) and produces the alarm sound. The alarm sound is generated by forcing
15 voltage over piezoceramic transducer **540**, which then buzzes for the duration of the alarm signal.

The exemplary sensor for sensing blood pressure pulse preferably comprises three elements: anvil **510**, protrusion **520** and piezoceramic transducer **540**. Protrusion
20 **520** is preferably welded, optionally by a laser, on one side to the center of anvil **510** and on the other side to the center of piezoceramic transducer **540**. Anvil **510** is pressed against the skin of the wrist of the subject (not shown), more preferably at a pulse point. Anvil **510** may optionally be a rigid disk or other structure, made for example of polymer, or optionally a metal, such as gold plated copper or stainless steel, for example. Of course, any other type of suitable material, or combinations of
25 materials, may also optionally be used.

Anvil **510** therefore collects and integrates the pressure waves, which are associated with each pulse of the blood of the subject, from the area of skin below anvil **510**. This pressure is preferably transferred from the center of anvil **510** to the center of piezoceramic transducer **540** via protrusion **520**. Piezoceramic transducer **540** then emits voltage to form a signal, preferably according to a linear output. Protrusion **520** preferably is able to focus the input pressure, therefore increasing the output signal of piezoceramic transducer **540**.

Therefore, if at least a portion of anvil **510** is located adjacent to, and in physical contact with, an area of the wrist where blood pressure pulses may be detected, transducer **540** generates electrical pulses corresponding to the detected blood pressure pulses. Each of the electrical pressure pulses preferably defines a maximum voltage over a systolic interval and a minimum voltage over a diastolic interval. The electrical signal from transducer **540** is preferably amplified by analog front end **119** and transferred via A/D converter **109** to processing unit **103** (see figure 1). Processing unit **103** processes the digital signal and may deliver a plurality of medical information based on the measurement of blood pressure pulse including but not limited to heart rate, regularity in heart rate, breathing rate, arrhythmia of the heart (if any), general rhythm and functioning of the heart as well as the blood pressure amongst others.

Device **500** optionally and preferably features two conductive areas **560** and **561** at the top. In the bottom part of device **500**, anvil **510** preferably has a conductive area **515**, which preferably sits adjacent to the skin of the user. In some exemplary embodiments, conductive area **515** may cover the whole of anvil **510**, a non-limiting example of which is constructing anvil **510** of metal. Each of conductive areas **560**,

561 and 515 is preferably electronically connected, as one of the sensors 102, to an analog front-end 119 (Figure 1).

Conductive areas 560, 561 and 515 may optionally and preferably be made of metal, polymer coated with a conductive layer or any other conductive material including but not limited to gold plated copper. Conductive areas 560, 561 and 515 form three electrodes that may be used for measuring electrochemical activity of the user's body (e.g. ECG, or tonus activity). This activity measures the effects of electricity on chemical and biological activities in the body, and is referred to hereinafter as electrochemical activity.

For optionally measuring ECG, the user has to touch, simultaneously, the two conductive areas 560 and 561 with the user's second hand, for example with two fingers, to form three measuring points including the skin portion, on the first hand, that is adjacent to conductive area 515. The three electronic signals from conductive areas 560, 561 and 515, are transferred to analog front-end 119 (Figure 1). Analog front-end 119 extracts the ECG analog signal from the three signals by using the signal of one electrode as a reference and amplifying the differential voltage between the other two electrodes. The ECG analog signal is then transferred to A/D converter 109 and from there the digital ECG signal is transferred to processing unit 103 (Figure 1). Analyzing the analog signal to extract the ECG signal may be done by electrical circuits that are known in the art.

Additional medical information may be determined from the ECG signal. For example, information about breathing rate may be processed based on methods that are described in the prior art. An exemplary method is disclosed in the following article: "Derivation of Respiration Signals from Multi lead ECGs". By George B. Moody, Roger G. Mark, Andrea Zoccola and Sara Mantero. This article originally

appeared in Computers in Cardiology 1985, vol. 12 pp. 113-116 (Washington, DC: IEEE Computer Society Press), which is hereby incorporated by reference as if fully set forth herein.

Other medical information that may be produced by processor unit **103** (FIG. 1) is the Pulse Wave Transit Time (PWTT), that may be determined by measuring the time delay between the electrical pulse of the heart, measured from the ECG signal and the time of the blood pressure pulse.

In another exemplary embodiment, A/D converter **109** (see figure 1) may be integrated into processing unit **103**. Processing unit **103** processes the ECG signal and generates medical information such as, but not limited to, heart rate, regularity in heart rate, breathing rate, arrhythmia of the heart (if any), as well as the general rhythm and functioning of the heart for example. The medical information is then transferred to the call center via gateway **110** (Figure 1).

Device **500** may optionally be used for measuring the oxygen saturation in the blood (SpO₂) by using SpO₂ sensor **566**. Sensor **566** optionally and preferably has two light sources, optionally by two LEDs (light Emitting Diode) and a photoelectric detector for example. One of the LEDs emits in the infrared band and the other emits in the red band.

Figure 6 is a system diagram of an exemplary method of placement of SpO₂ sensor **566** in faceplate **557** (of device **600**). The two LEDs and the photoelectric detector (not shown here) of SpO₂ sensor **566** are optionally installed over platform **568** which is supported by flexible support **630**. Support **630** may optionally be any material which can absorb and exert pressure, including but not limited to a spring, piece of rubber, a sponge, flexible wing and so forth. Support **630** is locked in a niche **615** in faceplate **557**. The edge of niche **615** is optionally and preferably surrounded

by material **620**, which is more preferably flexible and opaque. Material **620** may optionally be any flexible opaque substance including but not limited to rubber, sponge, flexible wings and so forth.

To perform SpO₂ measurement, the user presses a finger against sensor **566**,
5 thereby pushing sensor **566** and platform **568** against flexible support **630** in the
direction of faceplate **557**. Flexible support **630** absorbs part of the force by moving
inside niche **615** and responding to the pressure with a predetermined force, which is a
result of the mechanical properties of flexible support **630**. The force is predetermined
to as to avoid disturbing the blood flow in the tissue. The skin of the finger (not
10 shown) that surrounds sensor **566** is therefore pressed against flexible opaque material
620, thereby blocking light creating a dark space around the measuring area which
prevents the surrounding light disturbing the measurement process. Upon depression
of sensor **566**, processing unit **103** (Figure 1) initiates the SpO₂ measuring thread.
Processing unit **103** instructs the current drivers in analog front-end **119** (Figure 1),
15 which is associated with sensor **566**, to force current through the LEDs alternately in
sensor **566**. The reflected light from the finger is received by the photo detector,
which converts the photons into electronic signal. The electronic signal is fed, as one
of sensors **102**, to analog front end **119**. Analog front-end **119** processes the analog
signal and transfers the processed analog signal to A/D converter **109** (Figure 1). The
20 digital signal is transferred to processing unit **103** (Figure 1), which processes the
digital signal and generates the SpO₂ figure. This information is then transferred to
the call center via gateway **110** (Figure 1).

The signal that is collected from the SpO₂ sensor may also optionally be used
for producing other heart related information. For example, processing the signal that

reflects the intensity of the reflected IR light may produce information such as heart rate, PWTT, irregularity of heart rate etc.

Other exemplary embodiments may have the SpO₂ sensor installed instead of the blood pressure pulse sensor (anvil **510**, protrusion **520** and piezoceramic sensor **540**). In this embodiment the reflected light is received from the wrist instead of the
5 finger.

Returning to Figure 5, device **500** may optionally have a temperature sensor **580** which is installed at the long band **576**. Temperature sensor **580** preferably includes a thermistor located in a metal cup and is connected via two flexible
10 conductive wires (not shown) that run along the band into the lower case of device **500**. The two wires are connected as one of sensors **102** (Figure 1) to analog front-end **119**. Analog front-end **119** converts the changes in the resistance of the thermistor into an electrical signal with magnitude proportional to the temperature of the user. The analog signal is converted into digital signal by A/D Converter **109** and
15 transferred to processing unit **103**. Processing unit **103** converts the digital signal into temperature information and sends this temperature information via gateway **110** to the call center.

Temperature sensor **580** is preferably installed in a protected solid housing. The solid housing may optionally be made of polymer, metal, gum or any material
20 able to provide the necessary properties.

To start measuring the temperature of the user device **500** is optionally removed from the user's hand and sensor **580** is preferably pressed against the user's armpit (not shown).

According to other embodiments of the present invention, the device
25 according to the present invention may optionally be combined with a blood pressure

monitoring device, such as a Wrist Blood Pressure Monitor that use Oscillometric Measurement Method with a cuff, for example. Figures 7-8 show different aspects of such an exemplary device according to the present invention. Figure 9 shows a flowchart of an exemplary extended physiological monitoring task (a Holter task) which is preferably performed with the device of Figures 7-8, but which optionally may be performed with the device according to the present invention as described in accordance to other embodiments above. Figure 10 shows a flowchart of an exemplary method according to the present invention for synchronizing a medical care management function of the device according to any of the above embodiments with a central care facility.

Turning now to Figure 7A, which is a schematic diagram of another illustrative embodiment of a device according to the present invention, the illustrative device is shown with an additional blood pressure monitoring device according to the present invention. Figure 7A shows a wearable device **700**, combined with a blood pressure cuff that is associated with the band of the wearable device **700**. The band may be comprised of two sections, a flexible band or section **776** and a rigid band or section **774**. The blood pressure cuff may be associated with the flexible band or section **776** or with both bands or sections. Blood pressure cuff preferably features two sets of electrodes, electrodes **780A, B** and **782A, B**. The electrodes may be located at the rigid (or semi rigid) section **774**, that is part of the band as shown. By rigid or semi-rigid, it is meant that the section is sufficiently hard surfaced but flexible enough to be able to conform to the shape of the wrist, while still being able to resume its original shape after removal from the wrist.

Electrodes **780A, B** and **782A, B** are preferably held against the skin of the subject (not shown) by a fastener **778A, 778B**, which more preferably maintains the

blood pressure cuff, which is associated with the band **776** and/or **774**, as a closed or semi-closed loop around the wrist of the subject (not shown). Fastener **778A**, **778B** may optionally be a Velcro device for example. The electrodes at each one of the sets (**780** or **782**) are connected in parallel. For example electrode **780a** is connected in parallel to electrode **780b**. The present invention is not limited to two electrodes in one set. Other embodiment may use other number of electrodes in one set. Using more than one electrode in a set improves the electrical contact with the skin of the subject within any given moment. A third electrode **714 (FIG 7B)** is preferably located on the MACU **770** top case, to be touched by the user's other hand.

10 Device **700** also preferably features a monitor and control unit (MACU) **770**, which preferably features at least a blood pressure monitoring and control unit. MACU **770** also preferably includes one or more sensor(s) and more preferably one or more analyzer(s) for at least measuring, but more preferably for also being capable of monitoring, at least one other type of physiological parameter including but not limited to ECG (electro cardiogram), SpO₂, breathing rate, etc. The ECG may be monitored through ECG Electrodes **780A, B** and **782A, B** and **714**.

MACU **770** preferably also includes functionality for monitoring blood pressure and/or other physiological parameters over an extended period of time of at least a few minutes (at least about 2 minutes), more preferably at least a few hours (at least about 2 hours) and most preferably at least about 24 hours (which may for example optionally be implemented according to a Holter functionality).

Other examples of sensors, which may optionally be provided with MACU **770**, include but are not limited to, body temperature, SpO₂ (oxygen saturation in the blood), as described in greater detail above, and an accelerometer (movement sensor)

for measuring breathing. The function of the accelerometer is described in greater detail below.

Figures 7B-7D are diagrams of external views of different parts of the illustrative device **700** according to the present invention. Figures 7B and 7C show diagrams of two views of MACU **770**, while Figure 7D shows a diagram of a temperature sensor that may optionally be used with device **700**.

As shown with regard to Figure 7B, MACU **770** preferably features a screen **701** for displaying a user interface, which is more preferably a GUI (graphical user interface). The user interface preferably features a plurality of menus with one or more choices, and/or other graphical selection features, thereby enabling the user to select, manipulate or manage one or more functions of device **700**. Preferably, the user also enters an identifier before being able to select, manipulate or manage one or more functions of device **700**, as described above. Screen **701** also optionally and preferably displays information to the user, for example about one or more physiological parameters being measured or monitored, as well as optionally about one or more medical care functions (such as when a particular medication should be administered for example), as described in greater detail below.

In order to assist the user to operate device **700**, one or more buttons are preferably provided for enabling the user to enter a command to MACU **770**. As shown for the purposes of illustration only and without any intention of being limiting, these button(s) may include, but are not limited to, one or more of a cursor button **702** (preferably including separate cursor up and down movement buttons **704** and **706** respectively as shown); an enter button **708** for entering a command and/or information; and a panic button **710**.

Device **700** also preferably features a temperature sensor **712** for measuring the temperature of the user (shown in greater detail with regard to Figure 7C), more preferably under the tongue (in the mouth), in the armpit and/or in the rectum of the user. Temperature sensor **712** is optionally and preferably inserted into a holder **713**
5 on MACU **770** for storage (shown in more detail with regard to Figure 7B) the temperature sensor is connected to the MACU **770** by cable with connector at the end, which is connected to connector **722** (FIG. 7C) on the MACU **770**. MACU **770** also preferably features an ECG electrode **714**. ECG electrode **714** may be used as the third electrode for enabling the ECG measuring. Also, MACU **770** preferably features
10 a SpO₂ sensor **716** as shown.

According to an embodiment of the present invention, MACU **770** also features a communication port **718** for enabling device **700** to communicate with an external electronic device such as a computer for example. Port **718** is optionally a serial port, such as a RS232 port for example, or any other suitable type of port.

15 MACU **770** also preferably features a sensor port **720** for receiving a connector from an external monitoring device (not shown), such as but not limited to a SpO₂ monitoring device (not shown), which may for example fit on or over a finger of the subject. Sensor port **720** may be used for connecting other analog devices such as additional ECG electrode, etc.

20 Figure 7C shows MACU **770** again from a different angle, in order to show an optional but preferred temperature sensor port **722** for receiving a connector from temperature sensor **712**. Alternatively, temperature sensor **712** may communicate with MACU **770** through wireless communication (not shown).

Figure 7D shows temperature sensor **712** alone.

Figure 8 shows a schematic block diagram of a system according to the present invention featuring the blood pressure monitoring device of Figure 7, wearable device **700**. Device **700** preferably features a number of components, which were previously described in conjunction with Figures 1 to 7. Components having the same reference number have the same or similar function unless otherwise stated.

As part of an exemplary embodiment of the system of the present invention, wearable device **700** preferably features a movement sensor **810** which may be an accelerometer. Movement sensor **810** may be used for measuring breathing. According to an embodiment of the present invention, the user places wearable device **700** against the abdomen or chest and then breathes (inhales and exhales). The movement of the stomach or chest during breathing is measured by movement sensor **810** and is used to measure breathing, for example according to rate of respiration, whether breathing is shallow or deep, whether the user is coughing and/or experiencing other respiratory difficulty or distress, and so forth. Movement sensor **810** may measure movements along one axis or more than one axis.

Movement sensor **810** preferably communicates with processing unit **103** in order to provide a signal indicating the measurement(s) being taken for breathing (respiration); this signal is then preferably analyzed as previously described.

It should be noted that screen **701** of Figures 7B and 7C is shown here as display **124**, which may optionally be an LCD for example. Screen **701** preferably is controlled by processing unit **103**. Also as described in greater detail below, screen **701** preferably is capable of displaying an electronic medical calendar or other medical management function, for example to remind the user to take certain medication(s) at certain time(s), to remind the user to attend a medical appointment at a certain time and place, and/or to remind the user to be certain to perform one or

more physiological measurements with the device according to the present invention. These functions may optionally and preferably be synchronized through communication with remote server **114**, as described in greater detail with regard to Figure 10.

5 Also as described with regard to Figure 7A, wearable device **700** preferably features a unit for measuring blood pressure, shown here as a blood pressure unit **820** for measuring and/or monitoring the blood pressure of the user. Blood pressure unit **820** may optionally and preferably be implemented according to oscillometry (see www.colin-europe.com as of February 10, 2004 for example). Oscillometry does not
10 determine blood pressure as an instant measurement, but instead calculates blood pressure according to the curves of changes (derivatives) in blood pressure and its oscillation. An advantage of this method is that it is not affected by sources of external noise and/or the presence of other electronic devices in the area of the patient. Another advantage of this method is that even under severe hypotension (very low
15 blood pressure) conditions, such that for example the Korotkoff sounds are barely detectable, oscillometry can still measure blood pressure as long as an arterial pulse exists. Typically, oscillometry is used while the pressure in the blood pressure cuff is first increased and then gradually decreased; as the cuff pressure decreases, the oscillation also decreases. The value of the systolic pressure is measured when the
20 oscillation decreases rapidly, while the diastolic pressure value is measured when the oscillation decreases rapidly. The mean arterial pressure is measured when the oscillation reaches a peak. Blood pressure unit **820** may be divided into two sections, a control section that may be located at MACU **770** and an inflatable cuff that reside in the band of wearable device **700**. The connection between the two sections may
25 optionally be implemented with one or more air tubes (not shown).

Blood pressure monitoring unit **820** is an example of one type of sensor; preferably, as previously described, wearable device **700** features a plurality of sensors controlled through processing unit **103**. An advantage of centralizing control through processing unit **103** is that measurements and activities of the different sensors may optionally be synchronized by processing unit **103**, for example according to real time clock **117**. Also, a comparative display of the measurements from different sensors may also optionally be provided to remote server **114** and/or display **124**, preferably with synchronization between the timing of the measurements from the different sensors.

10 Preferably, a locator unit **830** is featured, in order to be able to locate wearable device **700**, thereby also locating the user who is wearing wearable device **700**. This feature is optional but preferred because the user may be a patient who is elderly or otherwise incapacitated, and who therefore may become lost or disoriented. Locator unit **830** preferably enables a caregiver or other individual to locate the patient.

15 Optionally and preferably, locator unit **830** comprises a GPS unit, which could easily be implemented by one of ordinary skill in the art. Locator unit **830** preferably communicates with processing unit **103** in order to relay location information to remote server **114**, if for example the subject cannot communicate this information. For the implementation with a GPS unit as shown, locator unit **830** also preferably

20 features an antenna **834** as is well known in the art.

A user input interface **840** optionally and preferably enables the user to input information and/or commands. More preferably, user input interface **840** preferably communicates with at least one, but most preferably a plurality of buttons (see Figure 7) for receiving information and/or commands from the user.

As described with regard to Figure 7, wearable device 700 preferably also features a serial interface port 850, such as a RS232 port for example, for communicating with an electronic device, such as a glucometer (blood glucose meter) and/or a computer for example, and/or getting software updates.

5 According to an embodiment of the present invention, preferably communication unit 104 and/or 107 each independently comprises one or more different types of communicators; for example, communication unit 104 and/or 107 may optionally comprise one or more of wireless communication such as WiFi or cellular telephone communication, or relatively short range communication such as
10 Bluetooth for example, all of which are known in the art and could easily be implemented by one of ordinary skill in the art. Communication may optionally be continuous or intermittent. Other embodiments may use proprietary protocols.

Figure 9 is a flowchart of an exemplary method according to the present invention for performing an extended physiological monitoring task. The method is
15 described with reference to a "Holter" task for the purpose of illustration only and without any intention of being limiting. As is known in the art, a Holter task refers to a type of cardiac monitoring (including but not limited to blood pressure, ECG monitoring) which is well known in the art, and which is typically performed over 24 hours on a (frequently) ambulatory patient, whether in a hospital or as an out-patient.
20 Electrodes are placed on the chest of the patient and attached to a small heart-recording monitor that can be carried in a pocket or small pouch worn around the neck of the patient for example. The monitor is battery operated. The patient's heart activity is recorded, usually for a 24-hour period while the patient also maintains a manually written diary of activity during the 24-hour period. The recording is then

analyzed by medical personnel, a report of the heart's activity is tabulated, and irregular heart activity is correlated with activity.

The present invention offers an advanced Holter method that may use the wearable device 700 (FIG. 7) as an improved Holter device. The present invention
5 may add additional physiological parameters to the Holter task, including but not limited to SpO₂, blood pressure, body temperature, breathing rate, etc. The different physiological parameters may be measured in a synchronized manner by using the same time axis. Synchronizing the different measurements may improve the understanding of the different readings. The operation of the Holter equipment
10 according to an embodiment of the present invention is simple, and user friendly, since the wearable device includes a blood pressure cuff and two electrodes for ECG measurements. The third electrode may be extended, by an additional cable, from the wearable device 700 (FIG. 7) and be placed over the subject's chest.

In addition the present invention may eliminate the need for a manually
15 written diary of activity during the 24-hour period, as instead the subject may enter information about the type of activity that the subject is performing into the wearable device. Entering the type of activity may optionally be done by selecting the appropriate activity from a selection of activities that are displayed by display 701 through the user interface buttons 702, 706 and 704 (FIGS. 7B and 7C).

20 Furthermore the present invention may be implemented with an event recorder; a person may optionally instruct wearable device 700 to manually activate an event recording if symptoms such as palpitations, chest pain, or irregular rhythms are noticed. Then the wearable device may run a loop with a plurality of measuring for a short period of time, few minutes to tens of minutes and record the results.

Other embodiments of the present invention may have loop recorder capabilities. In loop recording, a time cycle is determined for a certain period of time, for example, ten minutes, twenty minutes, an hour, etc. During the loop a plurality of measuring cycles is performed. Each measuring cycle may be performed with
5 measurements of one or more physiological parameters. The results of the measurements are recorded in a memory section that may be dedicated to the loop recording function. At the end of the loop period a next loop begins, and the next loop results are written over information from the previous loop. Therefore at every moment, the loop memory includes information from the last period, which is
10 continuously overwritten to be current, as for the "black box" in an airplane.

At any given time a user may inform the wearable device that symptoms like palpitations, chest pain, etc. are currently felt. From that moment the loop is preferably broken, and the wearable device preferably continues the measurement(s) for a certain period, recording the results in addition to the information that was stored
15 during the loop that was broken. At the end of the period, a loop recording may optionally be started again, but preferably featuring storage of the information in another loop section in the memory. This feature may be used by a doctor for reviewing the physiological parameters of the subject prior and during a particular event.

20 The present invention is able to perform a more easily documented and more convenient type of Holter monitoring as described with regard to Figure 9. As shown, in method **900** (indicated by an arrow), monitoring is optionally initiated **910** by an external signal to the wearable device 700 (FIG. 7), a manual activation, or a signal from an internal electronic calendar that may be updated by the remote server
25 according to an exemplary embodiment of the present invention. The signal may

optionally be provided according to a medical management function such as a “calendar” for example, in which the time to start monitoring may optionally be entered. The signal may also optionally be provided according to a timer and/or according to a signal external to the device according to the present invention itself,
5 such as from a call center for example.

Next, the physiological monitoring (Holter) task is preferably started in stage 910. The device then obtains the Holter parameters in stage 912, such as determining which types of measurements are to be performed, the length of the period in which the Holter task is performed, the Holter’s period, and time interval between each
10 measuring event that will be performed during the Holter’s period. Other parameters may define the event, and each event may use one or more sensors for measuring one or more physiological parameters. The present invention may use more than one type of measuring event during a Holter’s period. These measurements may optionally include one or more measurements from the sensor(s), including but not limited to
15 ECG, blood pressure, SpO₂, pulse rate, temperature, respiration (breathing) functionality and so forth.

In stage 914, the device optionally communicates with the patient (subject) in order for the patient to be aware that the Holter monitoring is to start. The response may optionally include performing a measurement by the user, for example of
20 temperature. If no response is received, preferably the device again attempts to communicate with the patient until a response is received or a given number of attempts and/or elapsed time has passed, after which optionally an alarm is raised and the method exits. A user response optionally may not be required. In some cases, steps 914 and 920 may be added to each measuring event, between steps 930 and 932.
25 Communicating with the subject may be needed in case that the subject’s participation

is required to perform a certain action. For example, the subject may be requested to place a finger over the SpO₂ sensor.

In stage **920**, if the user has responded and/or if no response is required, then the measuring process starts, optionally separately for each measuring event in stage **930**. A measuring event is preferably started with the appropriate sensors (stage **932**), after which the results of the measurement(s) are stored, in memory 105, preferably with the time of measurement (stage 934). Different events, during the same Holter period, may use different sensors depending on the Holter's parameters. For example, ECG sensors may be used in each event (from every few seconds to a few minutes, for example), while the blood pressure or temperature may be measured in events that occur once an hour, for example. The event is optionally and preferably controlled according to the timing provided by the real time clock as previously described, such that synchronization is preferably possible as previously described and also for more accurate determination of the time of measurement. After each event ends, the timing for the next event is preferably determined (stage 936), preferably according to a predetermined program, as disclosed above in conjunction to step **912**. The program may optionally be sent to the device from an external source, such as a call center and/or remote server for example.

Optionally at one or more points during the Holter monitoring period, the user enters a note about an activity that the user is performing, such as climbing stairs for example. These notes may then optionally and preferably be correlated with cardiac activity as previously described. Preferably, the user is able to enter the note to the device according to the present invention through a note-taking function, more preferably by selecting from a plurality of predetermined menu choice activities (such as climbing stairs, getting out of bed, defecating and so forth).

At the end of the waiting period **936** for the next measuring event, a decision is made **940** as to whether the entire Holter period is terminated. If not, then method **900** returns to step **930** and starts an additional measuring event. If the period is terminated, the measurement results are preferably then transmitted from the device, for example to the call center and/or remote server or other external location via gateway **110** (FIG. 8), in stage **942**. Other exemplary embodiments may transfer the result of the measurements at the end of each event, instead of storing them in the wearable device (stage **934**).

Figure 10 is a flowchart of an exemplary method according to the present invention for synchronizing a medical care management function of the device according to the present invention with a central care facility. As for the method of Figure 10, the process of synchronization may optionally be initiated by an internal or external signal to the device according to the present invention, as shown in method **1000** (indicated by an arrow).

In stage **1010**, the medical diary (management function) synchronization task starts. The management function determines whether an event is to occur in stage **1020**. An event may be, for example, taking a medicine, starting to measure certain physiological parameters that require an active action from the subject (i.e. placing the thermometer under the subject's tongue), or transmitting text messages that were sent from the call center to the subject, such as the date of the next visit to a medical office, etc. If no event is to occur, then the process proceeds to establish a connection with an external synchronization source, such as a call center for example, in stage **1036**.

If an event is to occur, then the event is communicated to the subject in stage **1022**; for example the device may optionally make a sound, to catch the attention of

the subject, such as a beep for example, in addition to which an instruction may be displayed over display (screen) 701 (FIG. 7a). In stage **1030**, it is determined whether feedback (a response) from the subject is required. Feedback may be needed if the subject is requested to act, in order to indicate that the subject has fulfilled the instruction (for example, if the subject has been requested to place the thermometer under the subject's tongue). An exemplary feedback may be done by pressing button 708 (FIG. 7) after taking the medicine. If no feedback is required, then the process also proceeds to performing the event such as measuring the skin temperature, for example, in stage **1035**.

10 If feedback is required, then optionally the process waits to receive the feedback, preferably for a time period T1 (in which T1 is the length of time which should elapse), in stage **1032**. If feedback is then not received by the end of time period T1, then the process preferably returns to stage **1022** and the event is communicated to the subject again. Optionally and preferably, the process is only
15 allowed to return to this point a predetermined number of times and/or for a predetermined period of time, to avoid holding in a loop; more preferably an alarm is raised once this threshold has passed.

If feedback is received, then the process **1000** may perform the event (measuring task) **1035** before establishing the connection with the call center. The
20 measuring task may have optionally been previously described to the subject and/or given as a previous alert to the subject. Then method **1000** also proceeds (in stage **1036**) to establish a connection with an external synchronization source, such as a call center for example. Once the connection has been established, the medical diary (management function) in the wearable device is synchronized in stage **1038**. There
25 are other exemplary synchronized methods in which the wearable device may

communicate with the call center independently from method **1000**. Communicating with the call center may be done at any other time than the synchronization task (method **1000**), for example when the free space in the memory of the wearable device is below a certain level. In those methods, the synchronization between the
5 medical diary in the wearable device and the relevant diary in the call center may be done during the next connection with the call center. The process then ends in stage **1040**, for example optionally by ending the connection with the external source, or by entering to a sleeping mode until the time of the next synchronization cycle.

10 It will be appreciated that the above descriptions are intended only to serve as examples, and that many other embodiments are possible within the spirit and the scope of the present invention.

WHAT IS CLAIMED IS:

1. A device for measuring at least one physiological parameter of a subject in addition to blood pressure, comprising:
 - (a) a band for being fastened to a hand of the user;
 - (b) a blood pressure cuff for being associated with said band;
 - (c) at least one additional sensor for measuring at least one additional physiological parameter of the user; and
 - (d) a monitor and control unit (MACU) for controlling said blood pressure measurement and said measurement of said at least one additional physiological parameter of the user and for receiving a signal from said sensor and a signal from said blood pressure cuff and for converting said signals to form medical information.

2. The device of claim 1, wherein said physiological parameter includes breathing rate.

3. The device of claim 2, comprising a movement sensor for measuring the breathing rate.

4. The device of claim 1, wherein the at least one additional sensor includes an electro cardiogram (ECG) sensor and

wherein the ECG sensor includes at least one electrode associated with said band.

5. The device of claim 4, wherein said band features at least a rigid portion and said at least one electrode is associated with said rigid portion.

6. The device of claim 4, wherein the at least one electrode is organized into a set of two or more electrodes, such that only one electrode is required to be in contact with said wrist at any particular time.

7. The device of claim 1, wherein said MACU further comprises a sensor port for communicating with an external monitoring device for monitoring a physiological parameter.

8. The device of claim 1, wherein said physiological parameter is oxygen saturation in the blood (SpO_2).

9. The device of claim 8, wherein said at least one sensor comprises an SpO_2 sensor.

10. The device of claim 1, wherein said physiological parameter includes body temperature.

11. The device of claim 10, wherein said at least one sensor comprises a temperature sensor.

12. The device of claim 1, further comprising:
a display mounted on said device.

13. The device of claim 12, wherein said display shows at least one of a measurement from said sensor or from said blood pressure cuff (or a combination), or a medical diary management information, or a user interface.

14. The device of claim 1, further comprising:
a non-volatile memory for storing at least one physiological measurement result.

15. The device of claim 1, further comprising:
a communication unit for at least transmitting data.

16. The device of claim 15, wherein said communication unit also transmits a device identifier for uniquely identifying the device.

17. The device of claim 15, wherein said communication unit also receives data.

18. The device of claim 17, wherein said data includes information for synchronizing a medical diary management function.

19. The device of any of claims 1-18, further comprising a locator unit for locating the device.

20. The device of claim 19, wherein said locator unit comprises a GPS unit.

21. A system for measuring at least one physiological parameter of a subject and also blood pressure, comprising:

- (a) a device for measuring the at least one physiological parameter and blood pressure, comprising:
 - (i) a blood pressure cuff for being fastened to a wrist of the user;
 - (ii) at least one additional sensor for measuring at least one additional physiological parameter of the user;
 - (iii) a processor for receiving a signal from said sensor and a signal from said blood pressure cuff and for converting said signals to form data;
 - (iv) a communication unit for at least transmitting data; and
- (b) a gateway device for receiving said transmitted data for being monitored.

22. The system of claim 21, further comprising:
- (c) a remote server in communication with said gateway device, said remote server optionally being part of a call center for monitoring.

23. The system of claim 22, wherein said measurement of said at least one additional sensor is combined with blood pressure measurement to determine if said measurements are outside of an acceptable range, and if so, alerting said remote server.

24. A method for performing extended physiological monitoring for a Holter task on a subject for collecting results from a plurality of measuring events, with the device or system of any of claims 1-23, comprising:

- initiating an extended physiological monitoring task with the device;
- determining the Holter period by determining a time interval between each pair of measuring events;
- determining at least one type of measuring event for said monitoring task;
- performing at least one measuring event;
- storing a result of said at least one measuring cycle; and
- providing said result.

25. The method of claim 24, wherein at least one measuring event is performed for two or more physiological parameters.

26. The method of claims 24 or 25, wherein said result is transmitted to a remote server and/or call center.

27. The method of claim 26, wherein the results of the different physiological parameters are determined by reference to the same time base along the Holter period.

28. The method of claim 27, wherein the different physiological parameter includes one or more physiological parameters selected from the group consisting of ECG, blood pressure, SpO₂, temperature, and breathing rate.

29. The method of claim 27, wherein said initiating further comprises communicating with the subject.

30. The method of claim 27, wherein said initiating is determined according to at least one of an external signal from an external source or an internal timing signal.

31. The method of claim 30, wherein said internal timing signal is determined according to a medical diary management function.

32. The method of claim 30, wherein said initiating is determined according to a manual command from the subject.

33. The method of claim 30, wherein the subject enters at least one note about at least one activity of the subject during the Holter period.

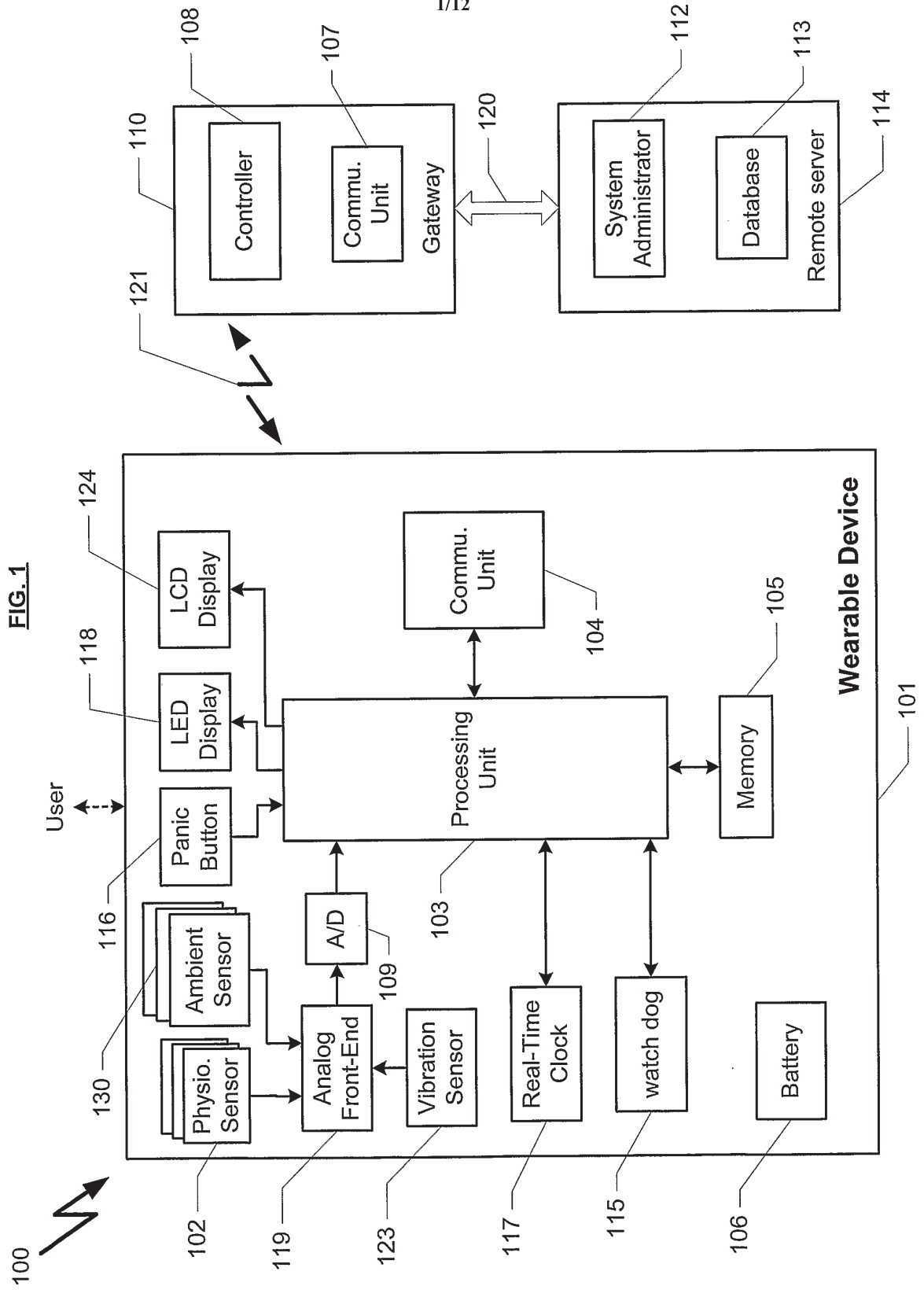
34. The method of any of claims 30-33, implemented as a Holter monitoring process.

35. A method for measuring breathing rate of a subject with the device of any of claims 2-23, comprising:

placing the device against the stomach or chest of the subject;

measuring the movement of the device; and

determining the breathing rate of the subject.



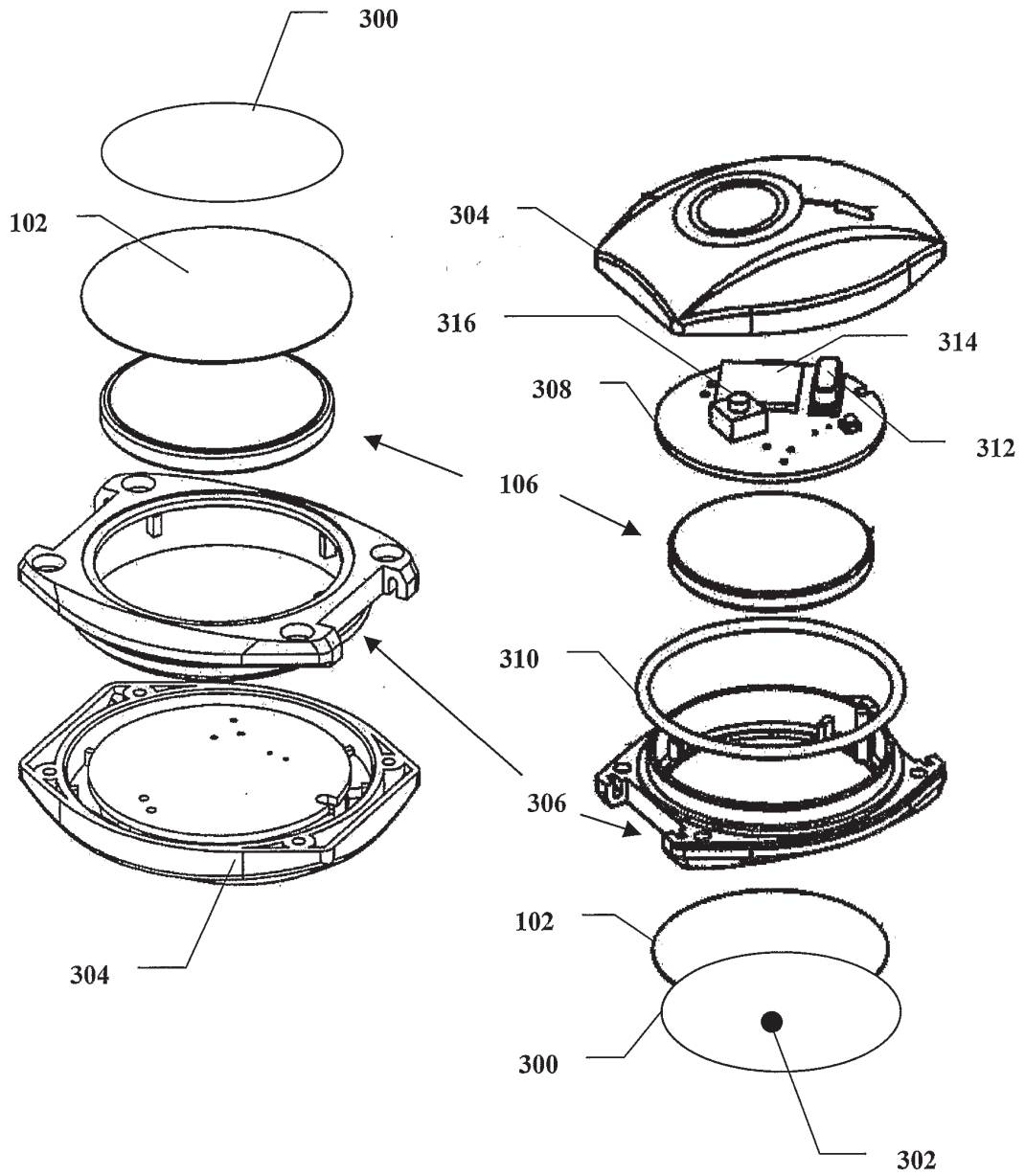


FIG. 2

FIG. 3

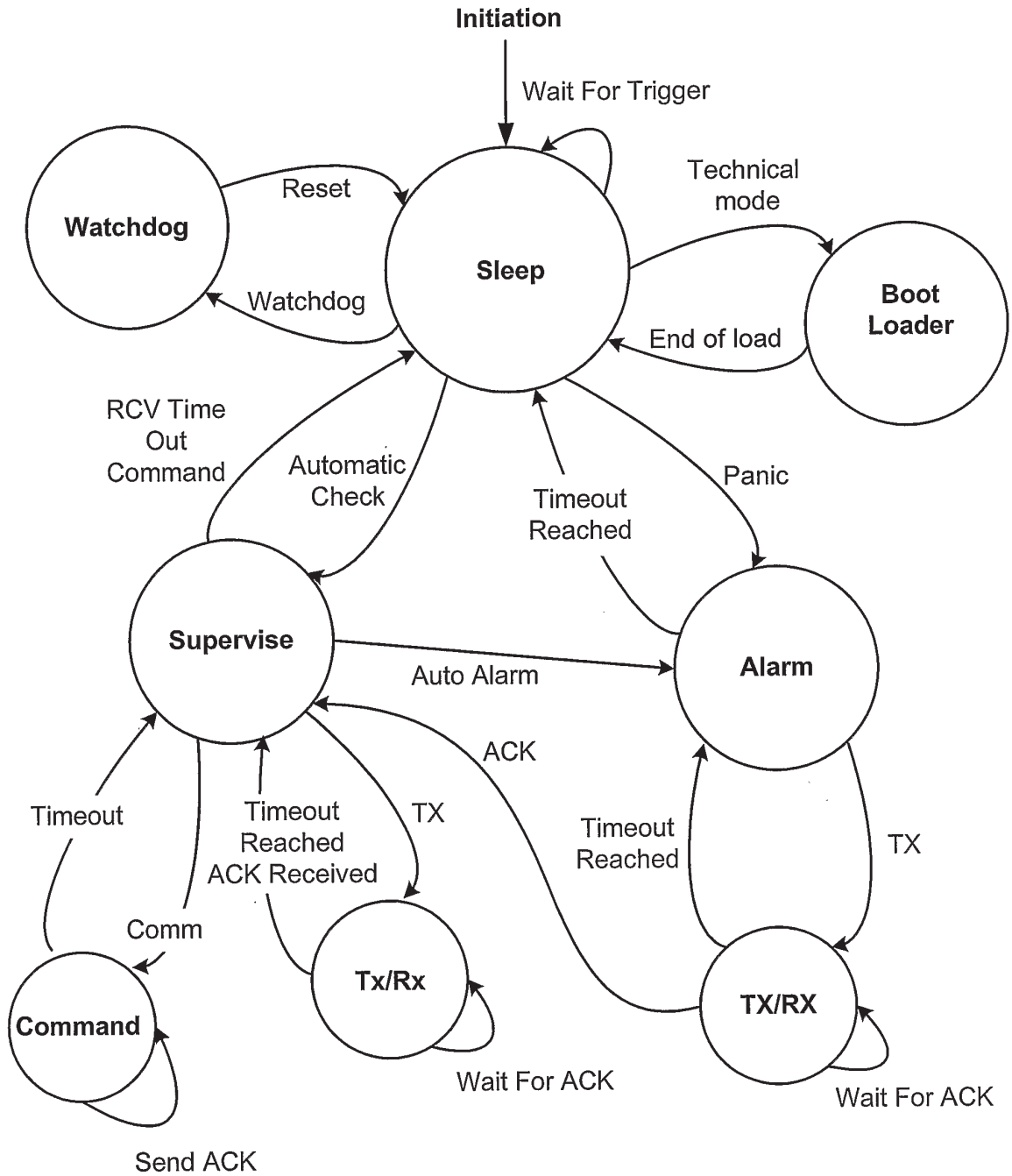


FIG. 4

S	L	Flag	Addr	Addr	Addr	C	Data	...	Data	CRC	CRC	E
T	e		(msb)	(mid)	(lsb)	M	(0)		(n)	(msb)	(lsb)	T
X	n					D						X

STX Start of TX indicates the beginning of the message (7E hex).

Len indicates the number of data bytes that the message contains (0 to n + 2 bytes).

Len = 0 – No command.

Len = 1 – command only; the message not include data(0) through data(n)

Len >2 – the message includes command and data.

Flag status bits (1 byte)

Addr the user ID of the bracelet, 24 bits (0 to 16777216).

CMD command description.

Data(n) the data of the message.

CRC the CRC (2 bytes) for the message beginning from STX byte to Data(n) byte

ETX End of TX indicates the end of the message (7B hex)

FIG. 5

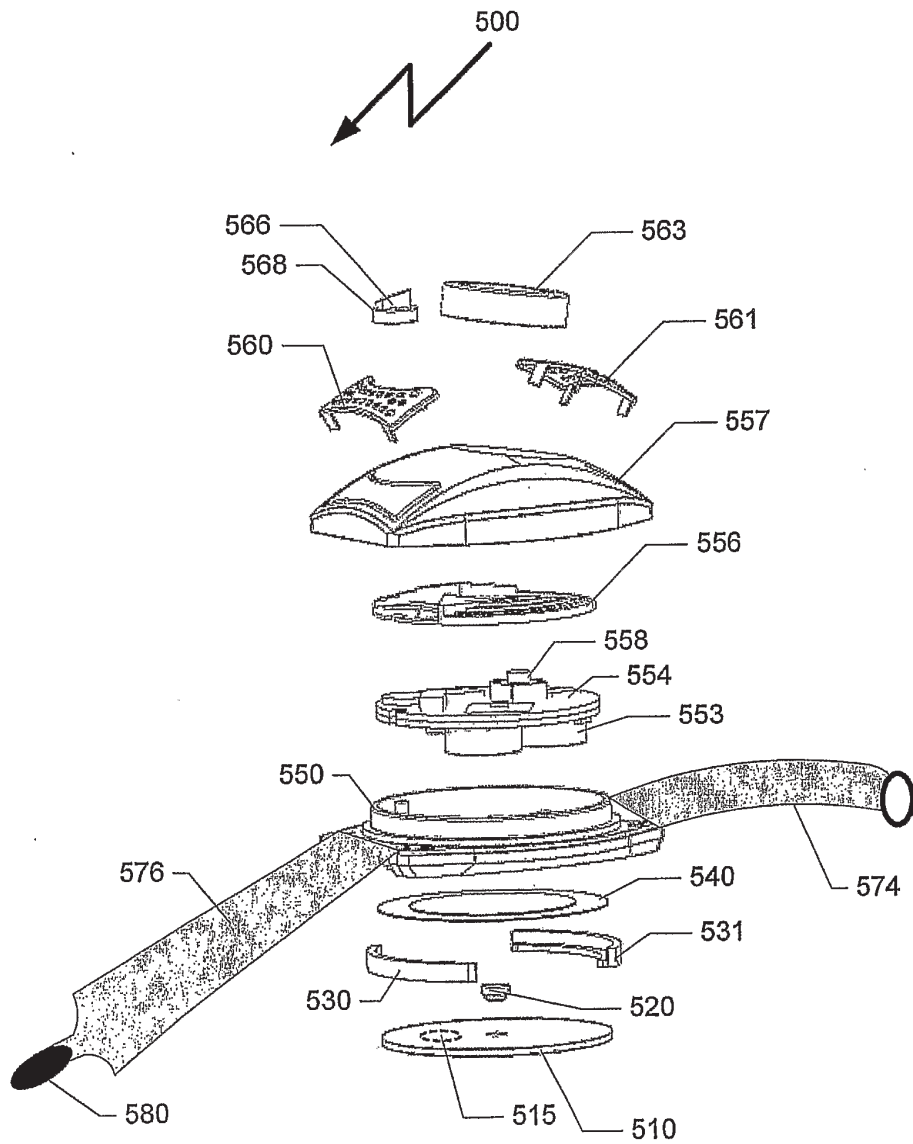


FIG. 6

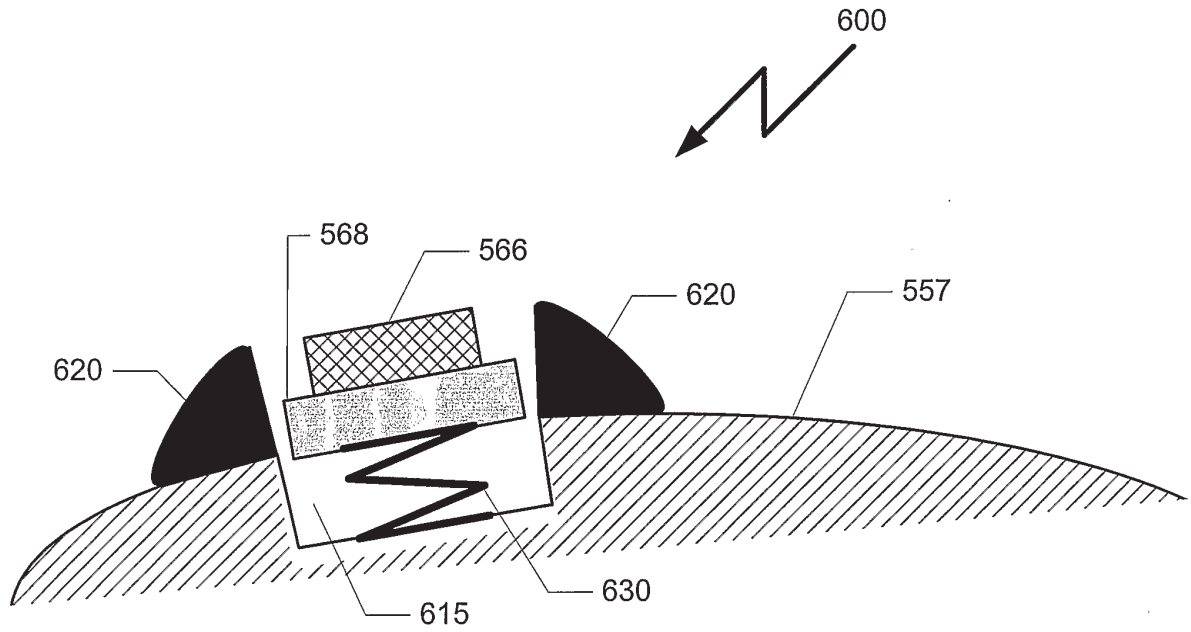
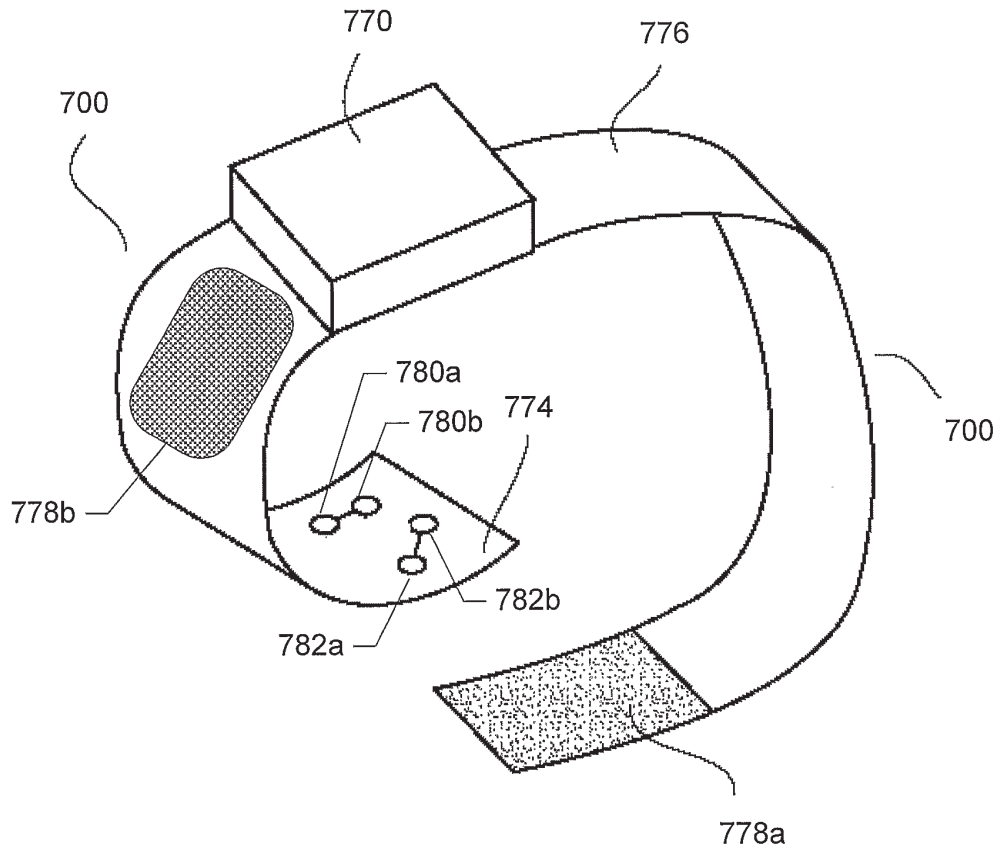


FIG. 7A



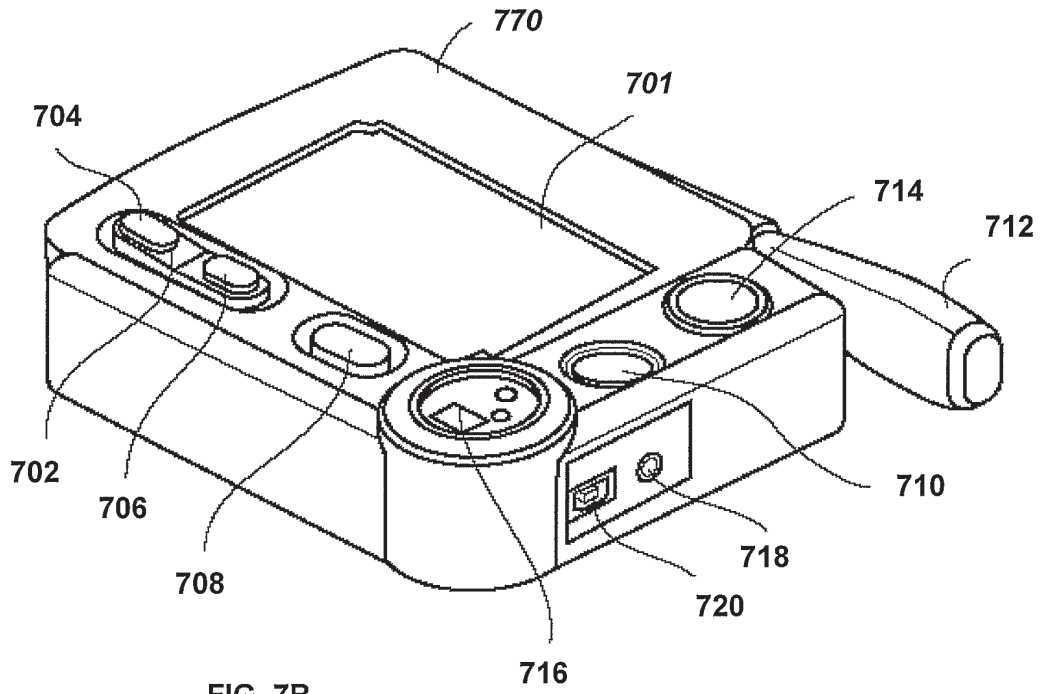


FIG. 7B

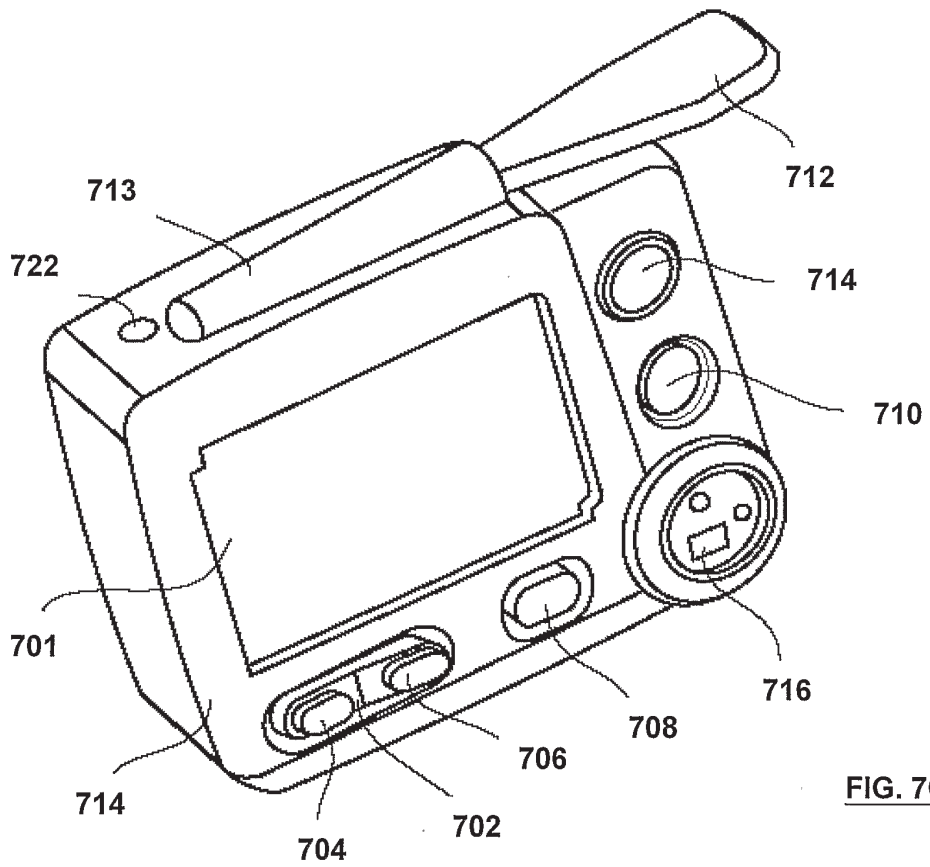


FIG. 7C

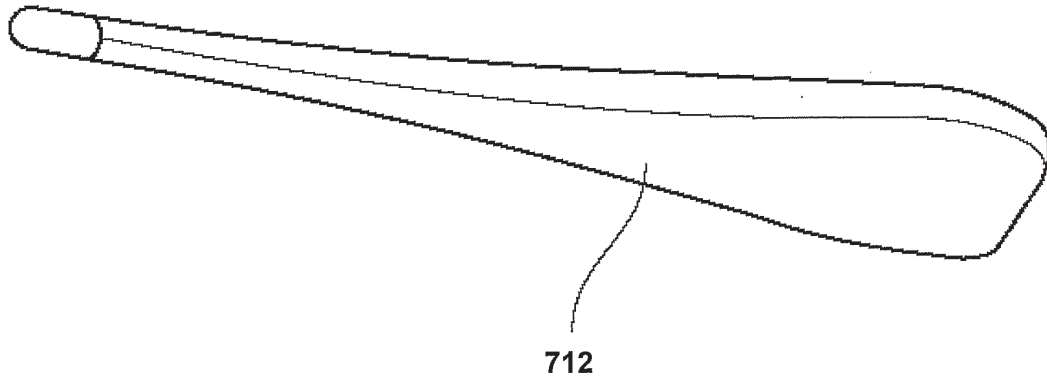


FIG. 7D

FIG. 8

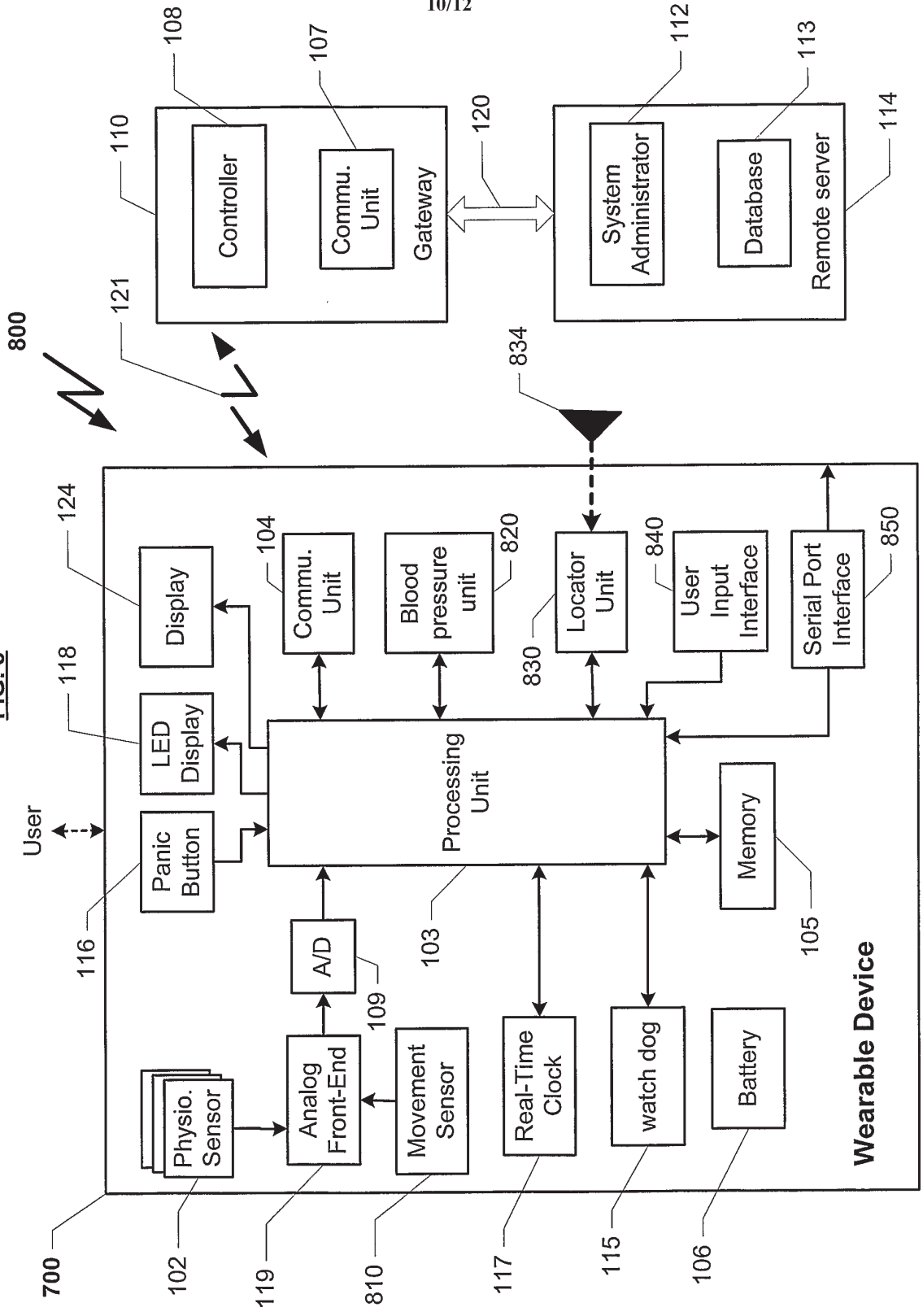


Fig. 9

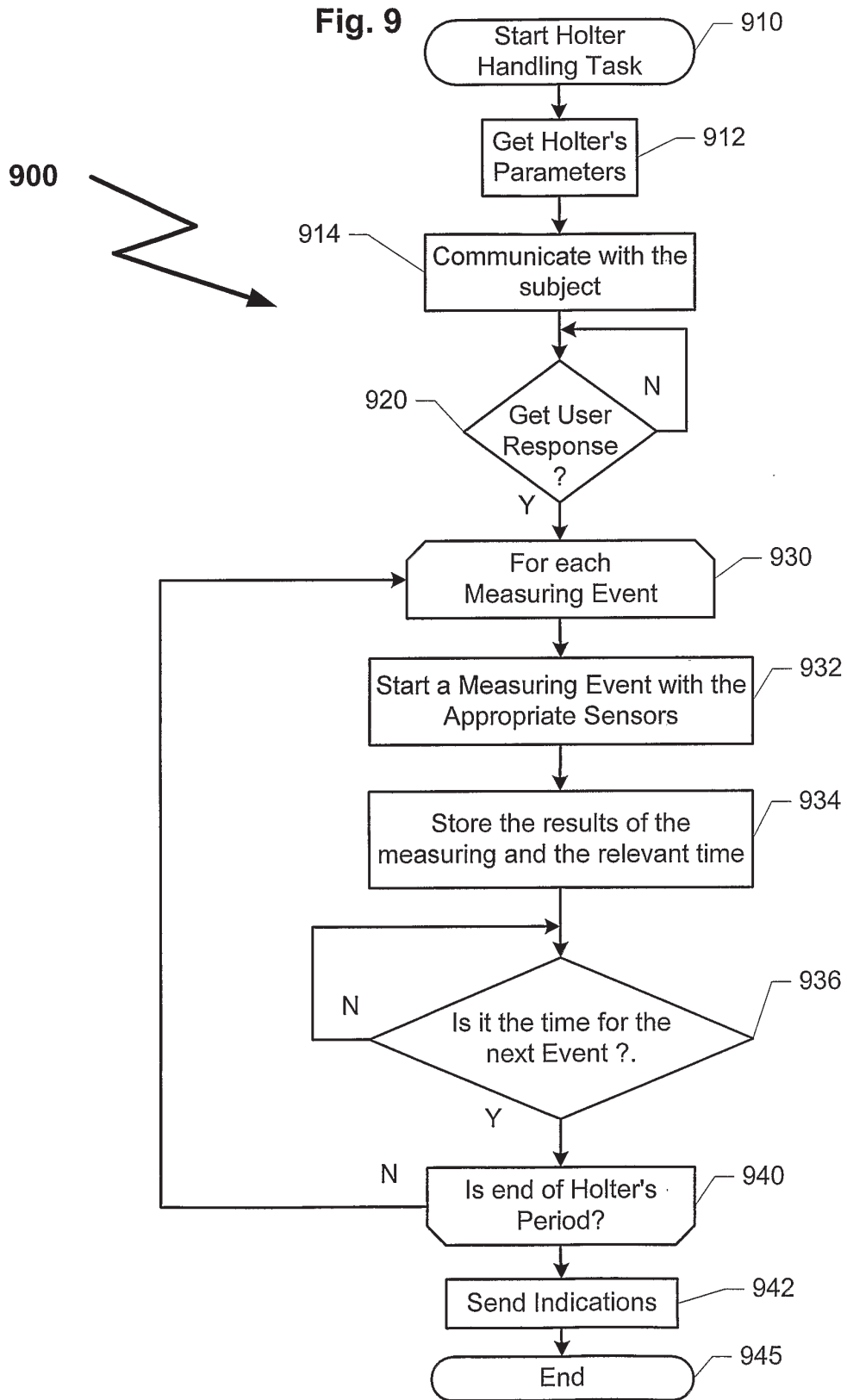
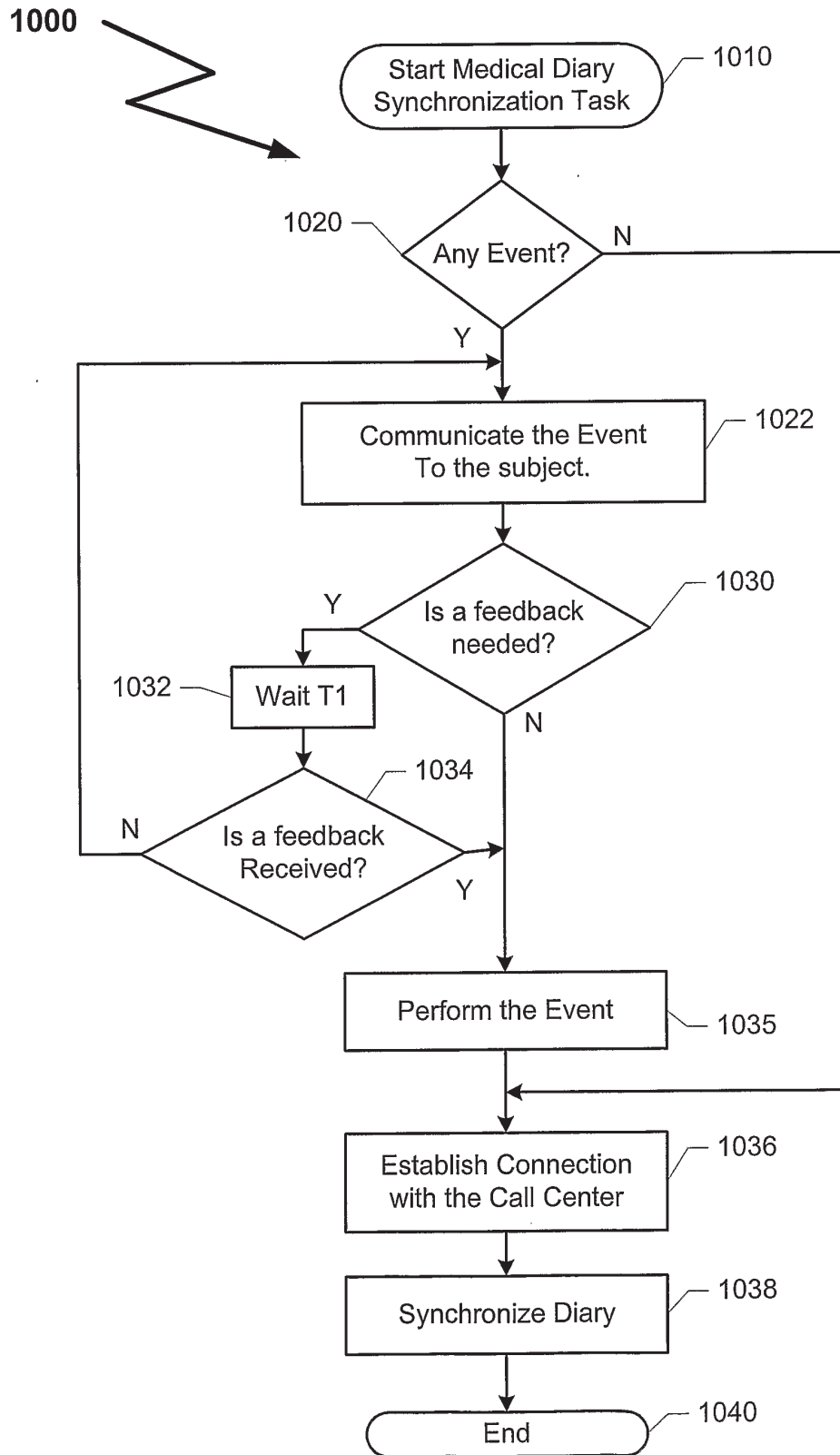


Fig. 10



INTERNATIONAL SEARCH REPORT

International application No.

PCT/IL04/00417

A. CLASSIFICATION OF SUBJECT MATTER IPC(7) : A61B 05/02, 05/08 US CL : 600/483, 485, 484, 490 According to International Patent Classification (IPC) or to both national classification and IPC																															
B. FIELDS SEARCHED Minimum documentation searched (classification system followed by classification symbols) U.S. : 600/483-485, 490, 481, 492-496, 500-503, 529, 534-536, 508, 509 Documentation searched other than minimum documentation to the extent that such documents are included in the fields searched Electronic data base consulted during the international search (name of data base and, where practicable, search terms used) EAST																															
C. DOCUMENTS CONSIDERED TO BE RELEVANT																															
<table border="1" style="width: 100%; border-collapse: collapse;"> <thead> <tr> <th style="width: 10%;">Category *</th> <th style="width: 70%;">Citation of document, with indication, where appropriate, of the relevant passages</th> <th style="width: 20%;">Relevant to claim No.</th> </tr> </thead> <tbody> <tr> <td style="text-align: center;">X</td> <td>US 6,314,058 B1 (LEE) 06 November 2001 (06.11.2001), column 2, line 31 to column 3, line 3, and figures 1 and 2.</td> <td style="text-align: center;">1 and 10-13</td> </tr> <tr> <td style="text-align: center;">Y</td> <td>US 6,379,310 B1 (MORI et al) 30 April 2002 (30.04.2002), column 4, line 38 to column 5, line 64, and figure 1.</td> <td style="text-align: center;">1-23 and 35</td> </tr> <tr> <td style="text-align: center;">Y</td> <td>US 6,513,532 B2 (MAULT et al) 04 February 2003 (04.02.2003), column 6, lines 20-45, column 8, line 43-57, column 11, line 61-67, and figures 1, 4, and 5.</td> <td style="text-align: center;">1-23 and 35</td> </tr> <tr> <td style="text-align: center;">A</td> <td>US 5,316,008 A (SUGA et al) 31 May 1994 (31.05.1994), abstract and figures 1 and 3.</td> <td></td> </tr> </tbody> </table>	Category *	Citation of document, with indication, where appropriate, of the relevant passages	Relevant to claim No.	X	US 6,314,058 B1 (LEE) 06 November 2001 (06.11.2001), column 2, line 31 to column 3, line 3, and figures 1 and 2.	1 and 10-13	Y	US 6,379,310 B1 (MORI et al) 30 April 2002 (30.04.2002), column 4, line 38 to column 5, line 64, and figure 1.	1-23 and 35	Y	US 6,513,532 B2 (MAULT et al) 04 February 2003 (04.02.2003), column 6, lines 20-45, column 8, line 43-57, column 11, line 61-67, and figures 1, 4, and 5.	1-23 and 35	A	US 5,316,008 A (SUGA et al) 31 May 1994 (31.05.1994), abstract and figures 1 and 3.		<table border="1" style="width: 100%; border-collapse: collapse;"> <thead> <tr> <th style="width: 10%;">Category *</th> <th style="width: 70%;">Citation of document, with indication, where appropriate, of the relevant passages</th> <th style="width: 20%;">Relevant to claim No.</th> </tr> </thead> <tbody> <tr> <td style="text-align: center;">X</td> <td>US 6,314,058 B1 (LEE) 06 November 2001 (06.11.2001), column 2, line 31 to column 3, line 3, and figures 1 and 2.</td> <td style="text-align: center;">1 and 10-13</td> </tr> <tr> <td style="text-align: center;">Y</td> <td>US 6,379,310 B1 (MORI et al) 30 April 2002 (30.04.2002), column 4, line 38 to column 5, line 64, and figure 1.</td> <td style="text-align: center;">1-23 and 35</td> </tr> <tr> <td style="text-align: center;">Y</td> <td>US 6,513,532 B2 (MAULT et al) 04 February 2003 (04.02.2003), column 6, lines 20-45, column 8, line 43-57, column 11, line 61-67, and figures 1, 4, and 5.</td> <td style="text-align: center;">1-23 and 35</td> </tr> <tr> <td style="text-align: center;">A</td> <td>US 5,316,008 A (SUGA et al) 31 May 1994 (31.05.1994), abstract and figures 1 and 3.</td> <td></td> </tr> </tbody> </table>	Category *	Citation of document, with indication, where appropriate, of the relevant passages	Relevant to claim No.	X	US 6,314,058 B1 (LEE) 06 November 2001 (06.11.2001), column 2, line 31 to column 3, line 3, and figures 1 and 2.	1 and 10-13	Y	US 6,379,310 B1 (MORI et al) 30 April 2002 (30.04.2002), column 4, line 38 to column 5, line 64, and figure 1.	1-23 and 35	Y	US 6,513,532 B2 (MAULT et al) 04 February 2003 (04.02.2003), column 6, lines 20-45, column 8, line 43-57, column 11, line 61-67, and figures 1, 4, and 5.	1-23 and 35	A	US 5,316,008 A (SUGA et al) 31 May 1994 (31.05.1994), abstract and figures 1 and 3.	
Category *	Citation of document, with indication, where appropriate, of the relevant passages	Relevant to claim No.																													
X	US 6,314,058 B1 (LEE) 06 November 2001 (06.11.2001), column 2, line 31 to column 3, line 3, and figures 1 and 2.	1 and 10-13																													
Y	US 6,379,310 B1 (MORI et al) 30 April 2002 (30.04.2002), column 4, line 38 to column 5, line 64, and figure 1.	1-23 and 35																													
Y	US 6,513,532 B2 (MAULT et al) 04 February 2003 (04.02.2003), column 6, lines 20-45, column 8, line 43-57, column 11, line 61-67, and figures 1, 4, and 5.	1-23 and 35																													
A	US 5,316,008 A (SUGA et al) 31 May 1994 (31.05.1994), abstract and figures 1 and 3.																														
Category *	Citation of document, with indication, where appropriate, of the relevant passages	Relevant to claim No.																													
X	US 6,314,058 B1 (LEE) 06 November 2001 (06.11.2001), column 2, line 31 to column 3, line 3, and figures 1 and 2.	1 and 10-13																													
Y	US 6,379,310 B1 (MORI et al) 30 April 2002 (30.04.2002), column 4, line 38 to column 5, line 64, and figure 1.	1-23 and 35																													
Y	US 6,513,532 B2 (MAULT et al) 04 February 2003 (04.02.2003), column 6, lines 20-45, column 8, line 43-57, column 11, line 61-67, and figures 1, 4, and 5.	1-23 and 35																													
A	US 5,316,008 A (SUGA et al) 31 May 1994 (31.05.1994), abstract and figures 1 and 3.																														
<input type="checkbox"/> Further documents are listed in the continuation of Box C. <input type="checkbox"/> See patent family annex.																															
<table style="width: 100%; border-collapse: collapse;"> <tr> <td style="width: 50%; vertical-align: top;"> * Special categories of cited documents: "A" document defining the general state of the art which is not considered to be of particular relevance "E" earlier application or patent published on or after the international filing date "L" document which may throw doubts on priority claim(s) or which is cited to establish the publication date of another citation or other special reason (as specified) "O" document referring to an oral disclosure, use, exhibition or other means "P" document published prior to the international filing date but later than the priority date claimed </td> <td style="width: 50%; vertical-align: top;"> "T" later document published after the international filing date or priority date and not in conflict with the application but cited to understand the principle or theory underlying the invention "X" document of particular relevance; the claimed invention cannot be considered novel or cannot be considered to involve an inventive step when the document is taken alone "Y" document of particular relevance; the claimed invention cannot be considered to involve an inventive step when the document is combined with one or more other such documents, such combination being obvious to a person skilled in the art "&" document member of the same patent family </td> </tr> </table>		* Special categories of cited documents: "A" document defining the general state of the art which is not considered to be of particular relevance "E" earlier application or patent published on or after the international filing date "L" document which may throw doubts on priority claim(s) or which is cited to establish the publication date of another citation or other special reason (as specified) "O" document referring to an oral disclosure, use, exhibition or other means "P" document published prior to the international filing date but later than the priority date claimed	"T" later document published after the international filing date or priority date and not in conflict with the application but cited to understand the principle or theory underlying the invention "X" document of particular relevance; the claimed invention cannot be considered novel or cannot be considered to involve an inventive step when the document is taken alone "Y" document of particular relevance; the claimed invention cannot be considered to involve an inventive step when the document is combined with one or more other such documents, such combination being obvious to a person skilled in the art "&" document member of the same patent family																												
* Special categories of cited documents: "A" document defining the general state of the art which is not considered to be of particular relevance "E" earlier application or patent published on or after the international filing date "L" document which may throw doubts on priority claim(s) or which is cited to establish the publication date of another citation or other special reason (as specified) "O" document referring to an oral disclosure, use, exhibition or other means "P" document published prior to the international filing date but later than the priority date claimed	"T" later document published after the international filing date or priority date and not in conflict with the application but cited to understand the principle or theory underlying the invention "X" document of particular relevance; the claimed invention cannot be considered novel or cannot be considered to involve an inventive step when the document is taken alone "Y" document of particular relevance; the claimed invention cannot be considered to involve an inventive step when the document is combined with one or more other such documents, such combination being obvious to a person skilled in the art "&" document member of the same patent family																														
Date of the actual completion of the international search 16 February 2005 (16.02.2005)	Date of mailing of the international search report <div style="text-align: center; font-size: 1.2em; font-weight: bold;">17 MAR 2005</div>																														
Name and mailing address of the ISA/US Mail Stop PCT, Attn: ISA/US Commissioner for Patents P.O. Box 1450 Alexandria, Virginia 22313-1450 Facsimile No. (703) 305-3230	Authorized officer <div style="text-align: center; font-size: 1.2em; font-family: cursive;">Sharon H. Greene for</div> Navin Natnithihadha Telephone No. (571) 272-2975																														

INTERNATIONAL SEARCH REPORT

International application No.

PCT/IL04/00417

Box No. II Observations where certain claims were found unsearchable (Continuation of item 2 of first sheet)

This international search report has not been established in respect of certain claims under Article 17(2)(a) for the following reasons:

1. Claims Nos.:
because they relate to subject matter not required to be searched by this Authority, namely:

2. Claims Nos.:
because they relate to parts of the international application that do not comply with the prescribed requirements to such an extent that no meaningful international search can be carried out, specifically:

3. Claims Nos.:
because they are dependent claims and are not drafted in accordance with the second and third sentences of Rule 6.4(a).

Box No. III Observations where unity of invention is lacking (Continuation of item 3 of first sheet)

This International Searching Authority found multiple inventions in this international application, as follows:

1. As all required additional search fees were timely paid by the applicant, this international search report covers all searchable claims.
 2. As all searchable claims could be searched without effort justifying an additional fee, this Authority did not invite payment of any additional fee.
 3. As only some of the required additional search fees were timely paid by the applicant, this international search report covers only those claims for which fees were paid, specifically claims Nos.:

 4. No required additional search fees were timely paid by the applicant. Consequently, this international search report is restricted to the invention first mentioned in the claims; it is covered by claims Nos.:
- Remark on Protest** The additional search fees were accompanied by the applicant's protest.
 No protest accompanied the payment of additional search fees.