



US006095984A

United States Patent [19]
Amano et al.

[11] **Patent Number:** **6,095,984**
[45] **Date of Patent:** **Aug. 1, 2000**

[54] **ARRHYTHMIA DETECTING APPARATUS**

[75] Inventors: **Kazuhiko Amano**, Suwa; **Kazuo Uebaba**, Yokohama; **Hitoshi Ishiyama**, Toride, all of Japan

[73] Assignee: **Seiko Epson Corporation**, Tokyo, Japan

[21] Appl. No.: **08/981,349**

[22] PCT Filed: **Apr. 17, 1997**

[86] PCT No.: **PCT/JP97/01322**

§ 371 Date: **Apr. 6, 1998**

§ 102(e) Date: **Apr. 6, 1998**

[87] PCT Pub. No.: **WO97/38626**

PCT Pub. Date: **Oct. 23, 1997**

[30] **Foreign Application Priority Data**

Apr. 17, 1996 [JP] Japan 8-095731
Mar. 10, 1997 [JP] Japan 9-055263

[51] **Int. Cl.**⁷ **A61B 5/04**; A61B 5/02

[52] **U.S. Cl.** **600/500**; 600/481; 600/513; 600/515

[58] **Field of Search** 600/515, 513, 600/500, 509, 481

[56] **References Cited**

U.S. PATENT DOCUMENTS

3,996,928 12/1976 Marx 600/515
4,261,370 4/1981 Von Nettelhorst 600/481
4,338,950 7/1982 Barlow, Jr. et al. .
5,749,366 5/1998 Odagiri et al. 600/481
5,776,070 7/1998 Kitazawa et al. 600/483

FOREIGN PATENT DOCUMENTS

0 729 726 9/1996 European Pat. Off. .
60-135029 7/1985 Japan .
2-289230 11/1990 Japan .
4-285530 10/1992 Japan .
7-227383 8/1995 Japan .

Primary Examiner—Cary O'Connor
Assistant Examiner—Navin Natnithhadha

[57] **ABSTRACT**

The arrhythmia detecting apparatus of the present invention is provided with a pulse wave detecting means which non-invasively detects the pulse waveform, and an arrhythmia detecting means which detects arrhythmia by monitoring changes in the pulse waveform detected by the pulse wave detecting means. The arrhythmia detection means has a decision element which determines that arrhythmia has occurred when there is an interruption in the continuity of this change. Methods employed for investigating the continuity of change in the pulse waveform include a time domain method employing pulse wave interval values, and a frequency domain method in which frequency analysis (FFT or wavelet transformation) is carried out on the pulse waveform, with continuity studied based on the results of this analysis. As a result of this design, it is possible to detect arrhythmia by means of a simpler structure and easier operations as compared to an electrocardiogram and so on. Further, it is also acceptable to provide a body motion detecting means, and to determine continuity of change for a pulse wave component after the body motion component detected by the aforementioned means has been removed therefrom. In this case, since it is possible to remove the body motion component from the pulse waveform, arrhythmia can be detected even more accurately throughout the course of daily activities.

37 Claims, 43 Drawing Sheets

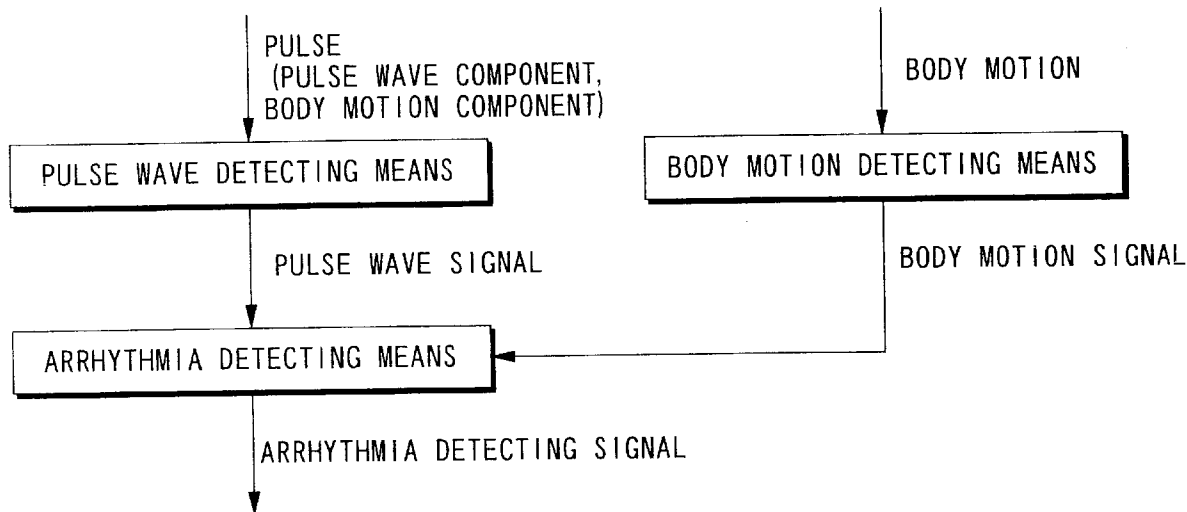


FIG. 1

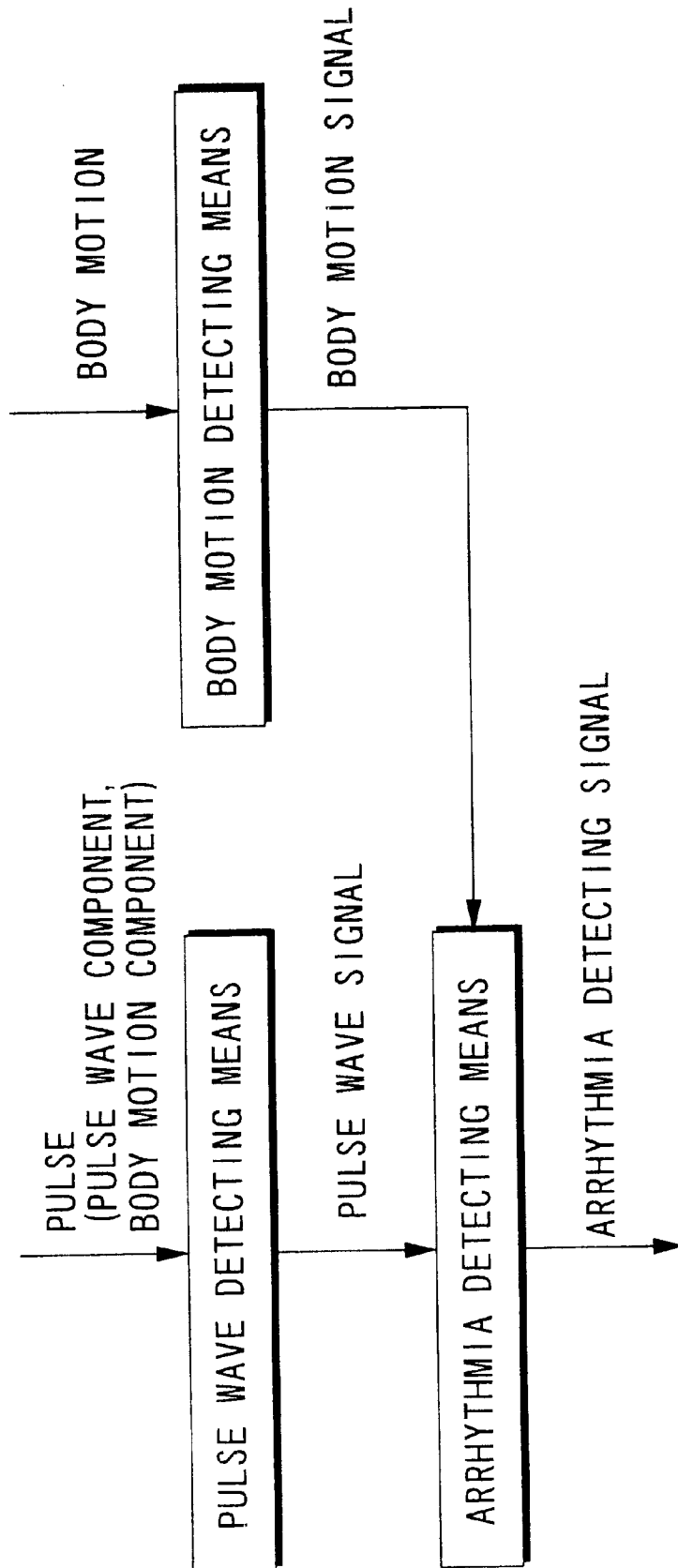


FIG. 2

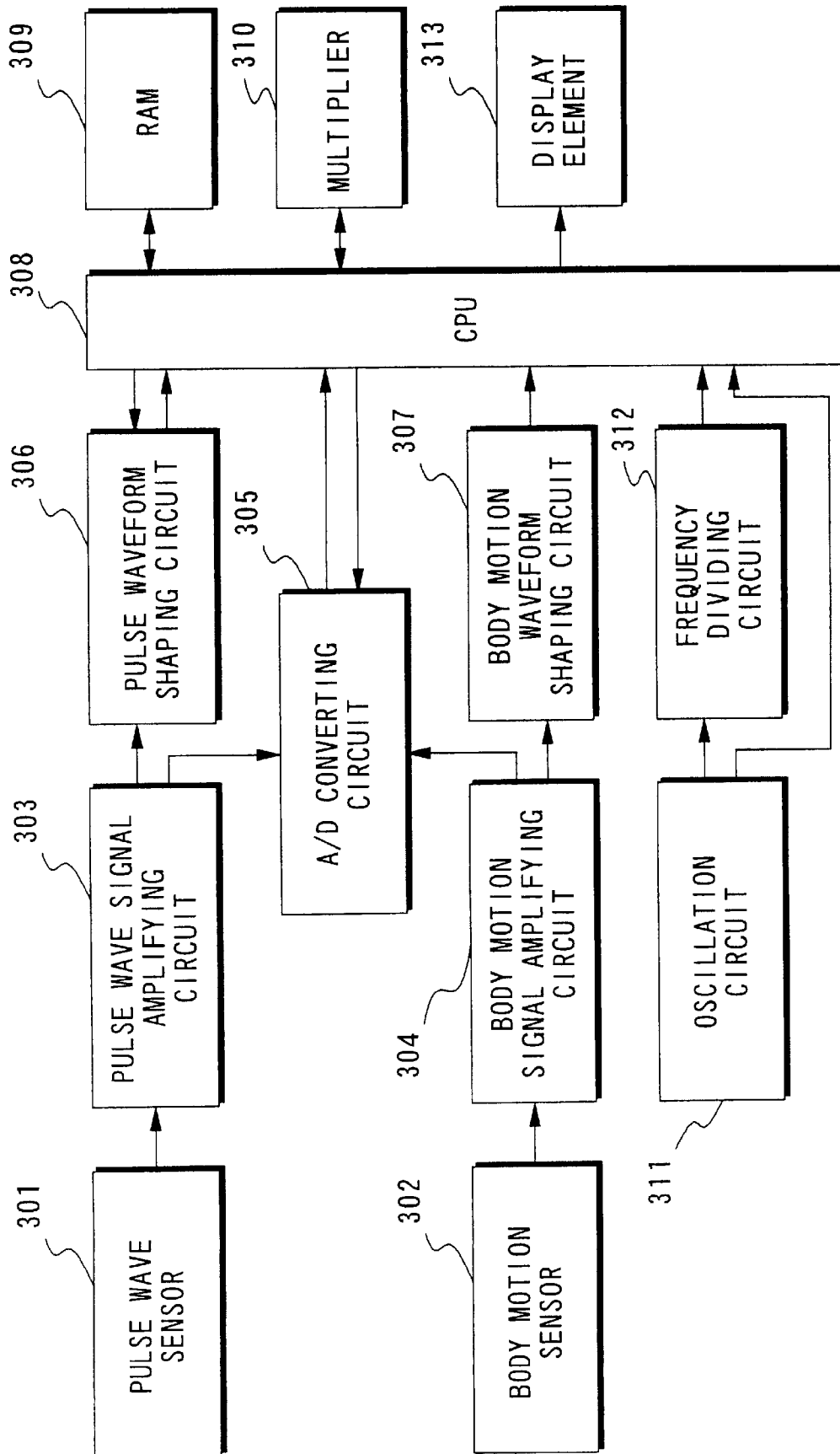


FIG. 3

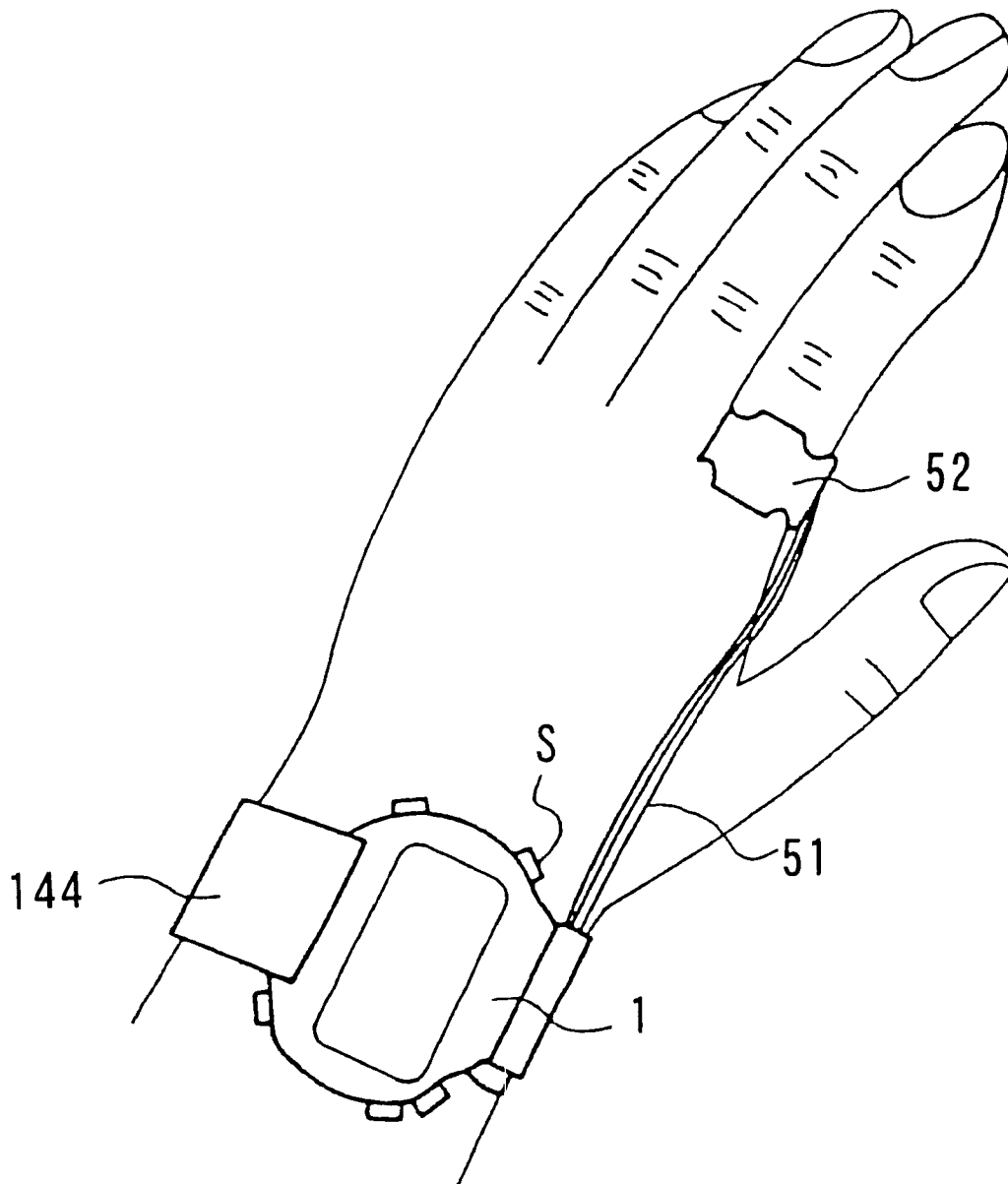
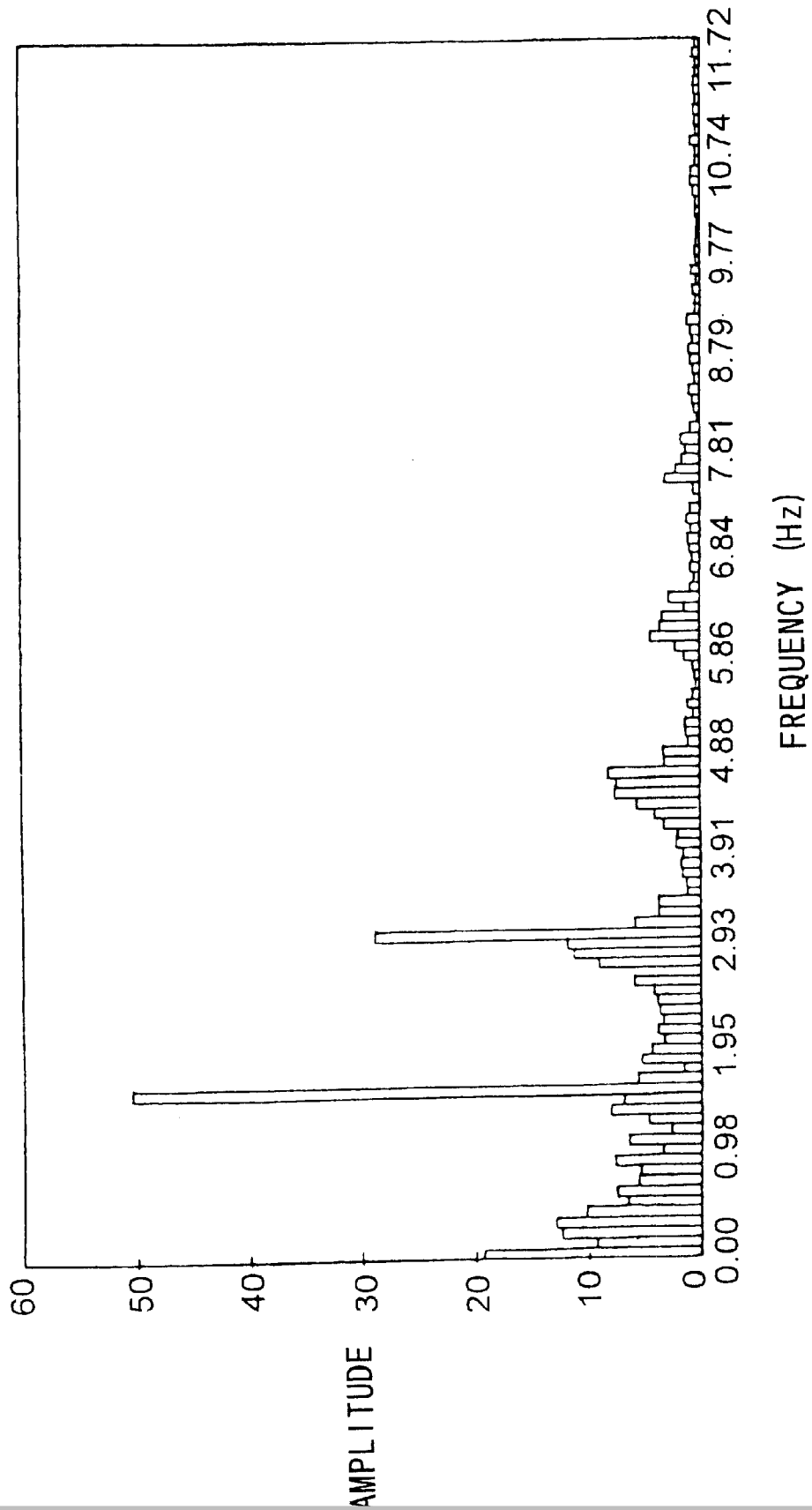


FIG. 4



Explore Litigation Insights

Docket Alarm provides insights to develop a more informed litigation strategy and the peace of mind of knowing you're on top of things.

Real-Time Litigation Alerts



Keep your litigation team up-to-date with **real-time alerts** and advanced team management tools built for the enterprise, all while greatly reducing PACER spend.

Our comprehensive service means we can handle Federal, State, and Administrative courts across the country.

Advanced Docket Research



With over 230 million records, Docket Alarm's cloud-native docket research platform finds what other services can't. Coverage includes Federal, State, plus PTAB, TTAB, ITC and NLRB decisions, all in one place.

Identify arguments that have been successful in the past with full text, pinpoint searching. Link to case law cited within any court document via Fastcase.

Analytics At Your Fingertips



Learn what happened the last time a particular judge, opposing counsel or company faced cases similar to yours.

Advanced out-of-the-box PTAB and TTAB analytics are always at your fingertips.

API

Docket Alarm offers a powerful API (application programming interface) to developers that want to integrate case filings into their apps.

LAW FIRMS

Build custom dashboards for your attorneys and clients with live data direct from the court.

Automate many repetitive legal tasks like conflict checks, document management, and marketing.

FINANCIAL INSTITUTIONS

Litigation and bankruptcy checks for companies and debtors.

E-DISCOVERY AND LEGAL VENDORS

Sync your system to PACER to automate legal marketing.