



US007470196B1

(12) **United States Patent**  
**Joshi**

(10) **Patent No.:** **US 7,470,196 B1**  
(45) **Date of Patent:** **Dec. 30, 2008**

(54) **METHOD OF TRANSFERRING GAMING DATA ON A GLOBAL COMPUTER NETWORK**

(75) Inventor: **Shridhar P. Joshi**, Skokie, IL (US)

(73) Assignee: **WMS Gaming, Inc.**, Waukegan, IL (US)

(\*) Notice: Subject to any disclaimer, the term of this patent is extended or adjusted under 35 U.S.C. 154(b) by 645 days.

6,012,983	A *	1/2000	Walker et al.	463/20
6,012,984	A *	1/2000	Roseman	463/42
6,077,162	A	6/2000	Weiss	463/26
6,080,062	A	6/2000	Olson	463/42
6,089,975	A	7/2000	Dunn	463/16
6,089,982	A	7/2000	Holch et al.	463/42
6,098,985	A	8/2000	Moody	273/292
6,104,815	A	8/2000	Alcorn et al.	
6,113,495	A	9/2000	Walker et al.	463/42

(21) Appl. No.: **09/688,501**

(22) Filed: **Oct. 16, 2000**

(51) **Int. Cl.**  
**A63F 9/24** (2006.01)

(52) **U.S. Cl.** ..... **463/42; 463/16**

(58) **Field of Classification Search** ..... 463/40-42, 463/43, 16-25, 29

See application file for complete search history.

(56) **References Cited**

**U.S. PATENT DOCUMENTS**

4,339,798	A	7/1982	Hedges et al.	364/412
4,856,787	A	8/1989	Itkis	
4,858,930	A	8/1989	Sato	273/85
5,489,103	A	2/1996	Okamoto	273/433
5,586,937	A	12/1996	Menashe	
5,655,961	A	8/1997	Acres et al.	463/27
5,707,286	A	1/1998	Carlson	463/16
5,759,102	A	6/1998	Pease et al.	463/42
5,762,552	A *	6/1998	Vuong et al.	463/25
5,770,533	A *	6/1998	Franchi	463/42
5,800,268	A	9/1998	Molnick	463/40
5,816,918	A	10/1998	Kelly et al.	463/16
5,823,879	A	10/1998	Goldberg et al.	
5,830,069	A *	11/1998	Soltész et al.	463/42
5,851,149	A *	12/1998	Xidos et al.	463/42
5,971,271	A	10/1999	Wynn et al.	235/380
5,971,849	A *	10/1999	Falciglia	463/16
5,980,384	A	11/1999	Barrie	463/16
5,999,808	A	12/1999	LaDue	455/412
6,001,016	A *	12/1999	Walker et al.	463/42

(Continued)

**FOREIGN PATENT DOCUMENTS**

EP 0 829 834 A2 3/1998

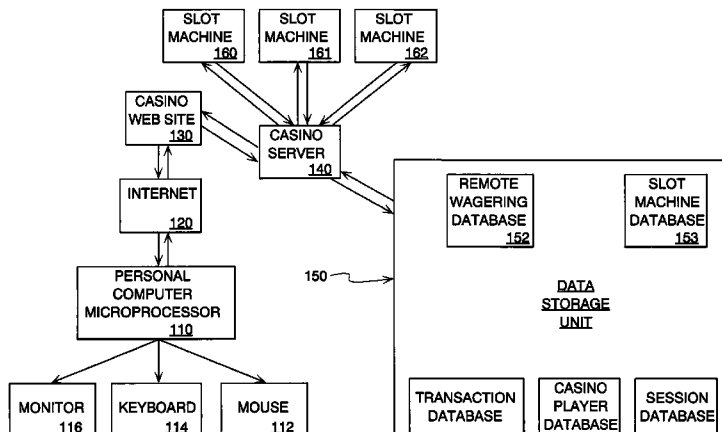
(Continued)

*Primary Examiner*—Robert E Pezzuto  
*Assistant Examiner*—Alex F. R. P. Rada, II  
(74) *Attorney, Agent, or Firm*—Nixon Peabody LLP.

(57) **ABSTRACT**

A remote gaming method comprising a player accessing, via a remote terminal, a gaming site on a global computer network connected to the remote terminal. The player is able to provide via the remote terminal, personal identification information to the gaming site and select, via the remote terminal, a game of chance located at a gaming establishment for remote play. The remote terminal is located outside the gaming establishment. The player places, via the remote terminal, a wager for playing the selected game and receives randomly generated text or graphical outcome data at the remote terminal for the selected game. The outcome data being generated by either a gaming server or a gaming machine at the gaming establishment and is subsequently relayed to the gaming site.

**26 Claims, 3 Drawing Sheets**



U.S. PATENT DOCUMENTS

6,117,011	A *	9/2000	Lvov	463/25
6,135,884	A	10/2000	Hedrick et al.	463/20
6,135,887	A	10/2000	Pease et al.	463/42
6,183,366	B1 *	2/2001	Goldberg et al.	463/42
6,196,920	B1 *	3/2001	Spaur et al.	463/42
6,210,274	B1	4/2001	Carlson	463/16
6,264,557	B1 *	7/2001	Schneier et al.	463/29
6,264,560	B1 *	7/2001	Goldberg et al.	463/42
6,264,561	B1 *	7/2001	Saffari et al.	463/42
6,272,223	B1	8/2001	Carlson	380/251
6,273,820	B1	8/2001	Haste, III	463/40
6,273,821	B1	8/2001	Moriguchi	463/42
6,280,325	B1	8/2001	Fisk	463/19
6,286,003	B1 *	9/2001	Muta	707/10
6,287,200	B1	9/2001	Sharma	463/40
6,334,104	B1	12/2001	Hirai	704/258
6,346,048	B1	2/2002	Ogawa et al.	463/42
6,354,946	B1	3/2002	Finn	463/42
6,361,437	B1 *	3/2002	Walker et al.	463/23
6,402,618	B1	6/2002	Reed et al.	463/40
6,406,371	B1 *	6/2002	Baba et al.	463/42
6,409,602	B1 *	6/2002	Wiltshire et al.	463/42
6,428,413	B1	8/2002	Carlson	463/16
6,454,650	B1	9/2002	Aronin	463/17
6,488,580	B1 *	12/2002	Robb	463/23
6,508,709	B1 *	1/2003	Karmarkar	463/42
6,508,710	B1 *	1/2003	Paravia et al.	463/42
6,575,834	B1	6/2003	Lindo	463/40
6,652,378	B2	11/2003	Cannon et al.	463/20

6,749,510	B2	6/2004	Giobbi	463/42
6,805,634	B1	10/2004	Wells et al.	463/42
6,986,055	B2	1/2006	Carlson	713/200
7,260,834	B1	8/2007	Carlson	726/4
7,303,473	B2	12/2007	Rowe	463/42
2001/0044337	A1	11/2001	Rowe et al.	463/29
2001/0044339	A1	11/2001	Codero et al.	463/42
2002/0037767	A1	3/2002	Ebin	463/25
2002/0045484	A1	4/2002	Eck et al.	463/42
2002/0073043	A1	6/2002	Herman et al.	705/64
2002/0087876	A1	7/2002	Larose	713/200
2002/0116615	A1	8/2002	Nguyen et al.	713/168
2002/0137217	A1	9/2002	Rowe	436/42
2002/0138594	A1	9/2002	Rowe	709/219
2003/0028567	A1	2/2003	Carlson et al.	708/250
2003/0162589	A1	8/2003	Nguyen et al.	463/25
2004/0209660	A1	10/2004	Carlson et al.	463/1
2005/0193209	A1	9/2005	Saunders et al.	713/182
2006/0165235	A1	7/2006	Carlson	380/268

FOREIGN PATENT DOCUMENTS

EP	0 843 272	A1	5/1998
EP	1013321		6/2000
EP	1078667		2/2001
EP	1177822		2/2002
WO	WO 98/35309	A1	8/1998
WO	WO 01/91866	A1	12/2001
WO	WO 04/034223	A2	4/2004

\* cited by examiner

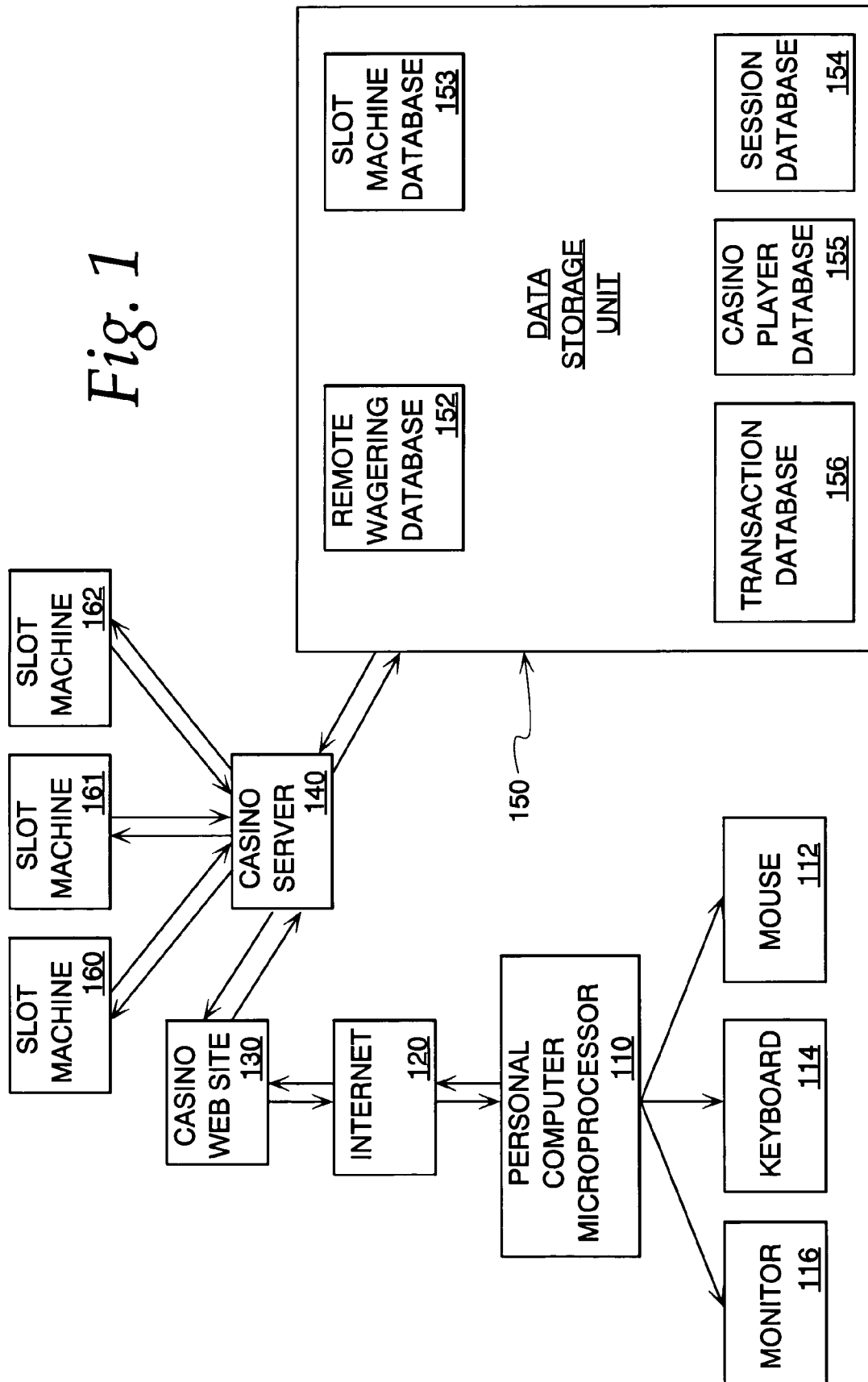
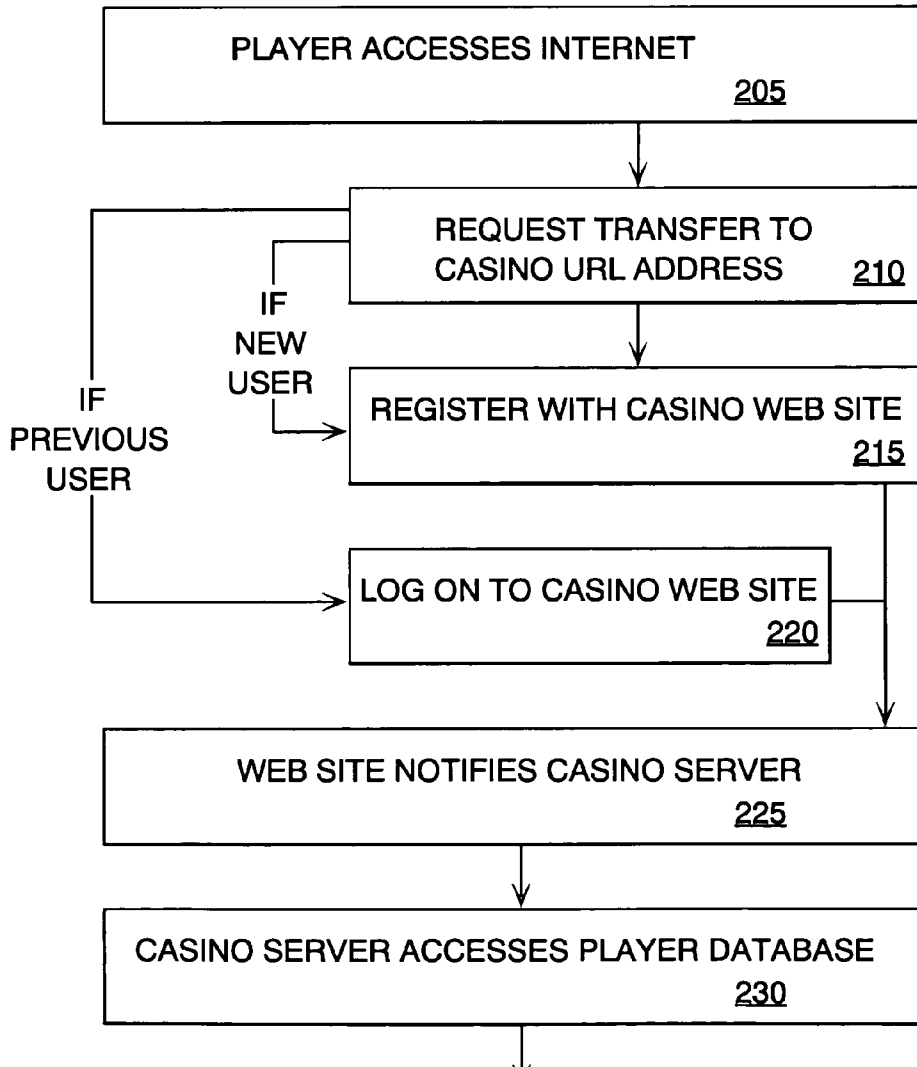


Fig. 1

Fig. 2a  
Fig. 2b

Fig. 2a



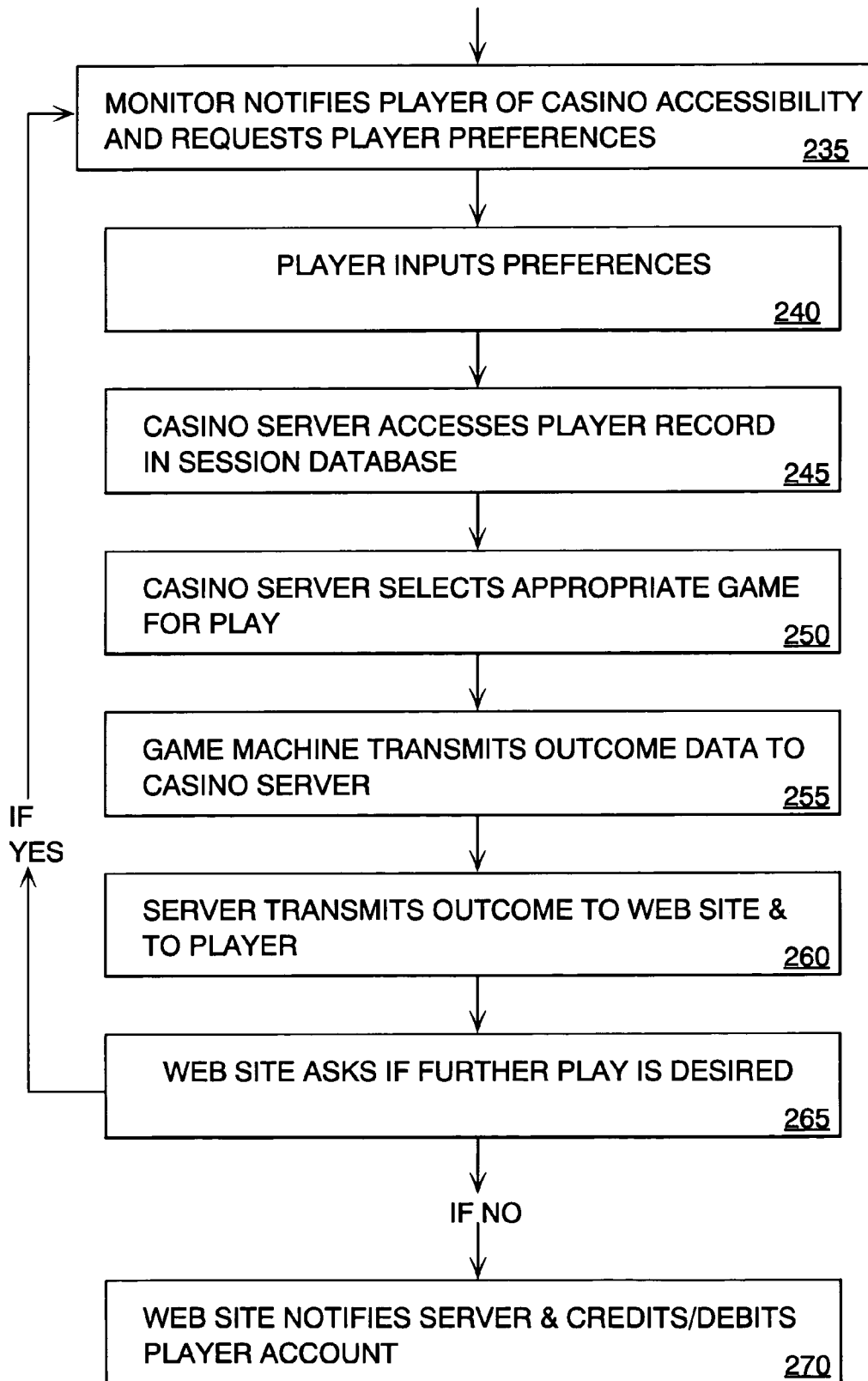


Fig. 2b

# Explore Litigation Insights

Docket Alarm provides insights to develop a more informed litigation strategy and the peace of mind of knowing you're on top of things.

## Real-Time Litigation Alerts



Keep your litigation team up-to-date with **real-time alerts** and advanced team management tools built for the enterprise, all while greatly reducing PACER spend.

Our comprehensive service means we can handle Federal, State, and Administrative courts across the country.

## Advanced Docket Research



With over 230 million records, Docket Alarm's cloud-native docket research platform finds what other services can't. Coverage includes Federal, State, plus PTAB, TTAB, ITC and NLRB decisions, all in one place.

Identify arguments that have been successful in the past with full text, pinpoint searching. Link to case law cited within any court document via Fastcase.

## Analytics At Your Fingertips



Learn what happened the last time a particular judge, opposing counsel or company faced cases similar to yours.

Advanced out-of-the-box PTAB and TTAB analytics are always at your fingertips.

## API

Docket Alarm offers a powerful API (application programming interface) to developers that want to integrate case filings into their apps.

## LAW FIRMS

Build custom dashboards for your attorneys and clients with live data direct from the court.

Automate many repetitive legal tasks like conflict checks, document management, and marketing.

## FINANCIAL INSTITUTIONS

Litigation and bankruptcy checks for companies and debtors.

## E-DISCOVERY AND LEGAL VENDORS

Sync your system to PACER to automate legal marketing.