

(12) **United States Patent**  
**Hill et al.**

(10) **Patent No.:** **US 7,296,288 B1**  
(45) **Date of Patent:** **Nov. 13, 2007**

(54) **METHODS, APPARATUSES, AND SYSTEMS ALLOWING FOR BANDWIDTH MANAGEMENT SCHEMES RESPONSIVE TO UTILIZATION CHARACTERISTICS ASSOCIATED WITH INDIVIDUAL USERS**

6,691,165 B1 \* 2/2004 Bruck et al. .... 709/227  
6,934,745 B2 \* 8/2005 Krautkremer .... 709/223  
2003/0018889 A1 \* 1/2003 Burnett et al. .... 713/153  
2003/0235209 A1 \* 12/2003 Garg et al. .... 370/468

\* cited by examiner

(75) Inventors: **Mark Hill**, Los Gatos, CA (US); **Guy Riddle**, Los Gatos, CA (US); **Robert E. Purvy**, San Jose, CA (US)

*Primary Examiner*—Kim Vu

*Assistant Examiner*—Joseph Pan

(74) *Attorney, Agent, or Firm*—Mark J. Spolyar

(73) Assignee: **Packeteer, Inc.**, Cupertino, CA (US)

(57) **ABSTRACT**

(\* ) Notice: Subject to any disclaimer, the term of this patent is extended or adjusted under 35 U.S.C. 154(b) by 788 days.

Methods, apparatuses and systems allowing for bandwidth management schemes responsive to utilization characteristics associated with individual users. In one embodiment, the present invention allows network administrators to penalize users who carry out specific questionable or suspicious activities, such as the use of proxy tunnels to disguise the true nature of the data flows in order to evade classification and control by bandwidth management devices. In one embodiment, each individual user may be accorded an initial suspicion score. Each time the user is associated with a questionable or suspicious activity (for example, detecting the set up of a connection to an outside HTTP tunnel, or peer-to-peer application flow), his or her suspicion score is downgraded. Data flows corresponding to users with sufficiently low suspicion scores, in one embodiment, can be treated in a different manner from data flows associated with other users. For example, different or more rigorous classification rules and policies can be applied to the data flows associated with suspicious users.

(21) Appl. No.: **10/295,391**

(22) Filed: **Nov. 15, 2002**

(51) **Int. Cl.**  
**G06F 21/00** (2006.01)

(52) **U.S. Cl.** ..... **726/2**; 713/194

(58) **Field of Classification Search** ..... 713/1, 713/2, 188, 194, 193; 380/200, 201, 255, 380/277; 726/2, 3, 11–15

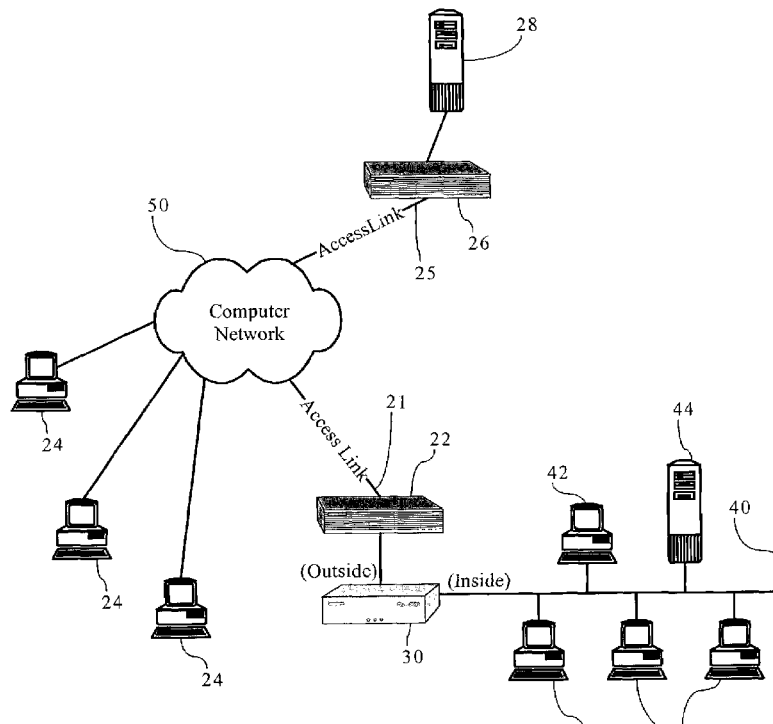
See application file for complete search history.

(56) **References Cited**

U.S. PATENT DOCUMENTS

6,339,784 B1 \* 1/2002 Morris et al. .... 709/204  
6,484,203 B1 \* 11/2002 Porras et al. .... 709/224

**34 Claims, 7 Drawing Sheets**



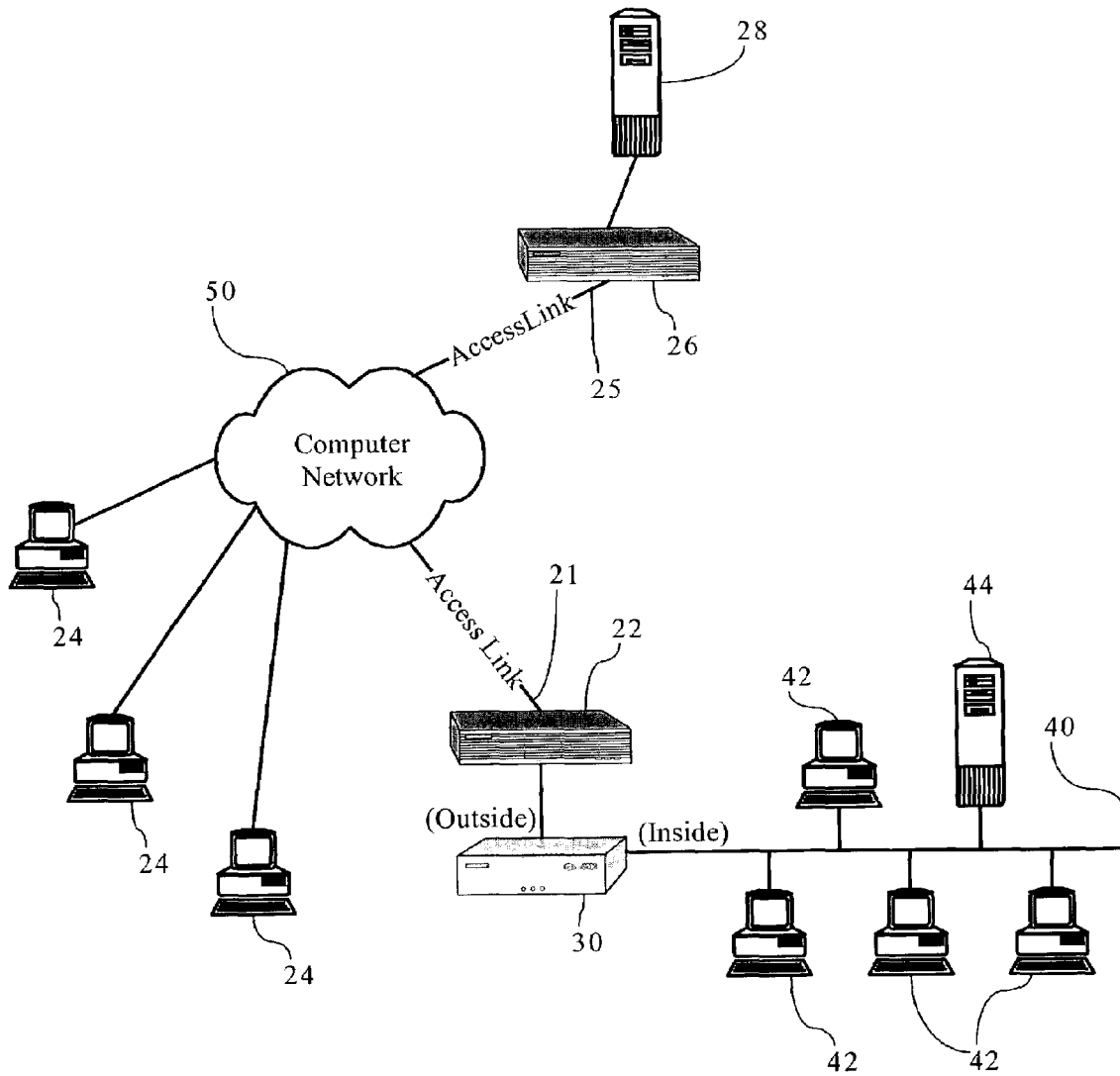


Fig.\_1

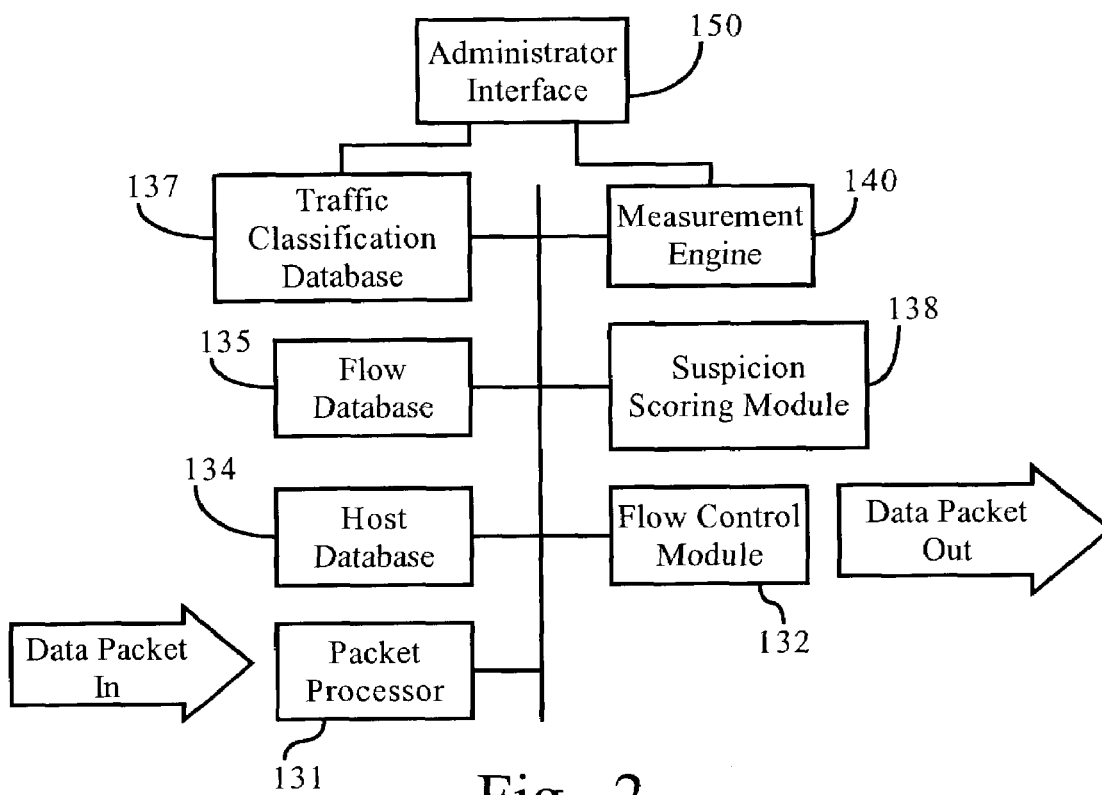


Fig. 2

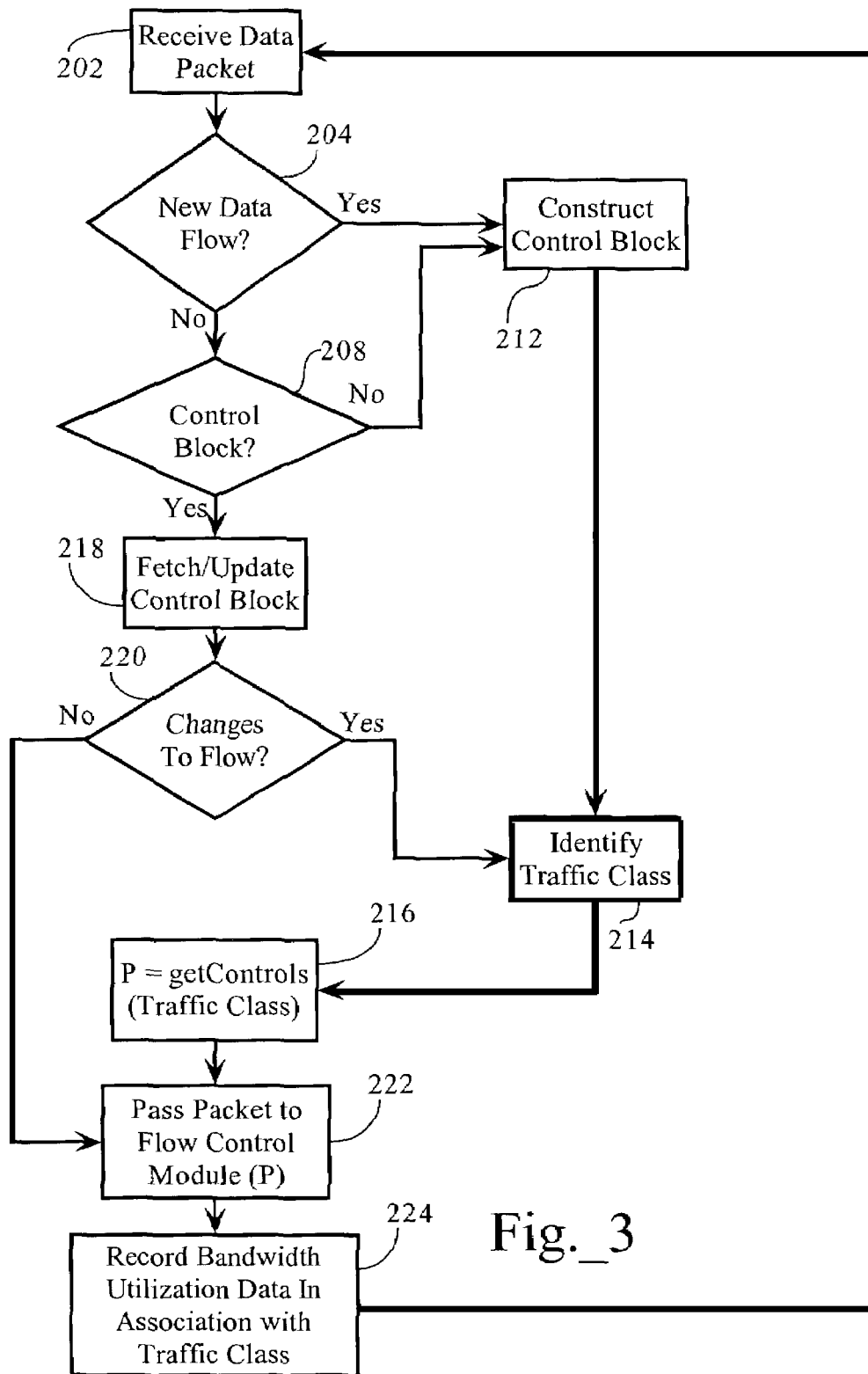


Fig.\_3

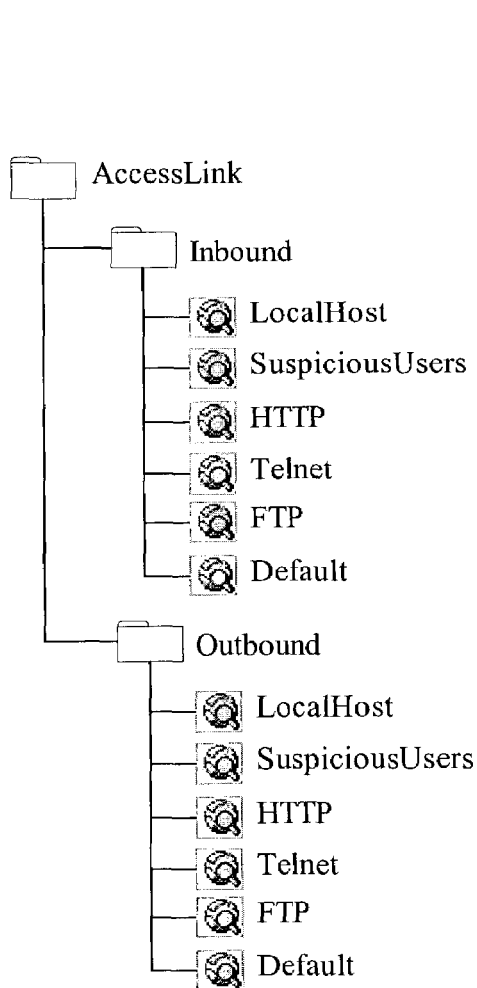


Fig. 4A

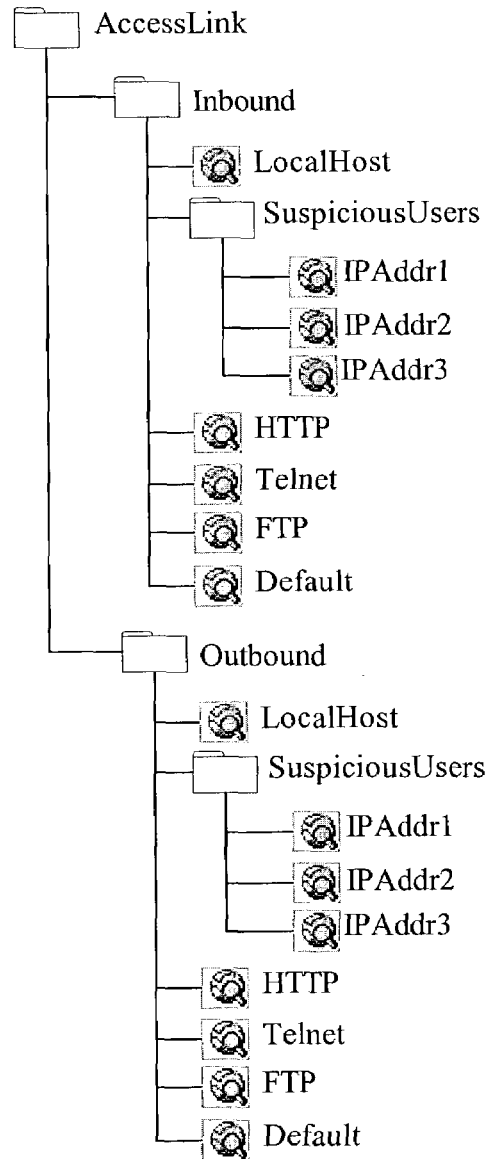


Fig. 4B

# Explore Litigation Insights

Docket Alarm provides insights to develop a more informed litigation strategy and the peace of mind of knowing you're on top of things.

## Real-Time Litigation Alerts



Keep your litigation team up-to-date with **real-time alerts** and advanced team management tools built for the enterprise, all while greatly reducing PACER spend.

Our comprehensive service means we can handle Federal, State, and Administrative courts across the country.

## Advanced Docket Research



With over 230 million records, Docket Alarm's cloud-native docket research platform finds what other services can't. Coverage includes Federal, State, plus PTAB, TTAB, ITC and NLRB decisions, all in one place.

Identify arguments that have been successful in the past with full text, pinpoint searching. Link to case law cited within any court document via Fastcase.

## Analytics At Your Fingertips



Learn what happened the last time a particular judge, opposing counsel or company faced cases similar to yours.

Advanced out-of-the-box PTAB and TTAB analytics are always at your fingertips.

## API

Docket Alarm offers a powerful API (application programming interface) to developers that want to integrate case filings into their apps.

## LAW FIRMS

Build custom dashboards for your attorneys and clients with live data direct from the court.

Automate many repetitive legal tasks like conflict checks, document management, and marketing.

## FINANCIAL INSTITUTIONS

Litigation and bankruptcy checks for companies and debtors.

## E-DISCOVERY AND LEGAL VENDORS

Sync your system to PACER to automate legal marketing.