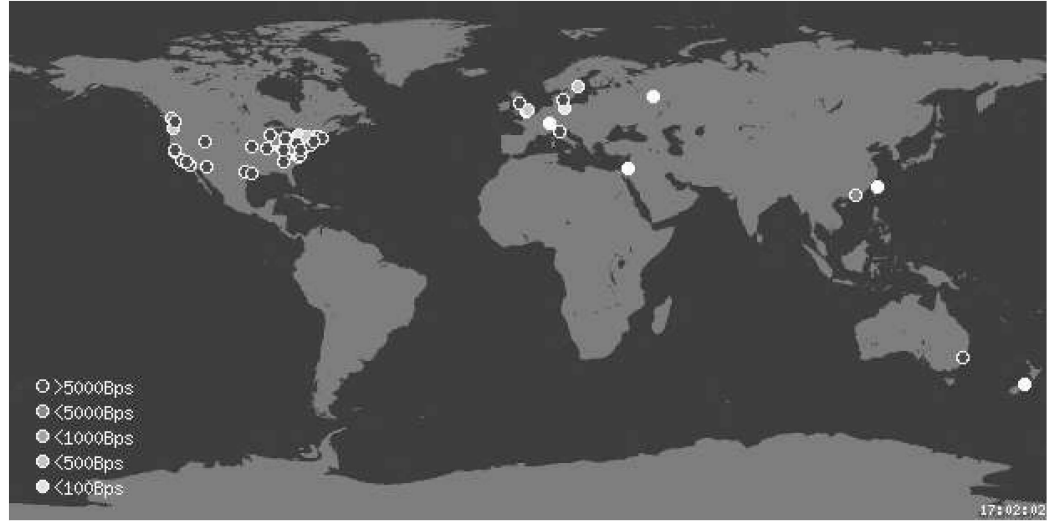


PLANETLAB

*An open testbed for developing, deploying,
and accessing planetary-scale services.*

Welcome to the PlanetLab website

- [Home](#)
- Documents:
 - [PlanetLab Design Notes \(PDNs\)](#)
 - [Node setup](#)
 - [Account setup](#)
 - [Raw sockets](#)
 - [Older publications](#)
- Accounts:
 - [Login](#)
- Status:
 - [Ganglia](#)
 - [InfoSpect](#)
 - [Node list](#)
 - [Deployment](#)
- Software:
 - [Boot image](#)
 - [Contributions](#)
 - [Submit a contribution](#)
- Meetings:
 - [March 2002](#)
 - [August 2002](#)
 - [December 2002](#)
- [Sourceforge site](#)
- Projects:
 - [Near-term](#)
 - [Related](#)
- Who are we?
 - [Institutions](#)
- [Contact](#)



[About this map](#)

We are building PlanetLab: a global testbed for developing and accessing new network services. Our immediate goal is 100 sites with 2 or 3 nodes and 10 sites with more substantial computing resources. The 2- and 3-node sites provide different view-points of the network, and connect a large client population. These sites are selected to provide a rich diversity of link behavior, with the goal of growing the overlay to a large enough size to support interesting scalability experiments. The resource-rich sites will consist of a small cluster of machines located at a network crossroad; i.e., routing and co-location center.

The project is being seeded by [Intel Research](#) **NOTE: This link will take you away from the PlanetLab site; PlanetLab does not control the content of the Intel Web site.** Intel Research is providing hardware for the first set of nodes, and operational and development support for PlanetLab in the short to medium term.