



US 20160278160A1

(19) **United States**

(12) **Patent Application Publication**  
**Schliwa-Bertling et al.**

(10) **Pub. No.: US 2016/0278160 A1**  
(43) **Pub. Date: Sep. 22, 2016**

(54) **NETWORK NODES, A USER EQUIPMENT AND METHODS THEREIN FOR ESTABLISHING A CONNECTION BETWEEN THE USER EQUIPMENT AND A WIRELESS COMMUNICATIONS NETWORK**

**Publication Classification**

(51) **Int. Cl.**  
*H04W 76/06* (2006.01)  
*H04W 48/10* (2006.01)  
*H04W 48/02* (2006.01)  
(52) **U.S. Cl.**  
CPC ..... *H04W 76/06* (2013.01); *H04W 48/02* (2013.01); *H04W 48/10* (2013.01)

(71) Applicant: **Telefonaktiebolaget L M Ericsson (publ)**, Stockholm (SE)  
(72) Inventors: **Paul Schliwa-Bertling**, Ljungsbro (SE);  
**Thomas Waldeen**, Linköping (SE);  
**Stefan Johansson**, Linköping (SE);  
**Håkan Axelsson**, Linköping (SE)

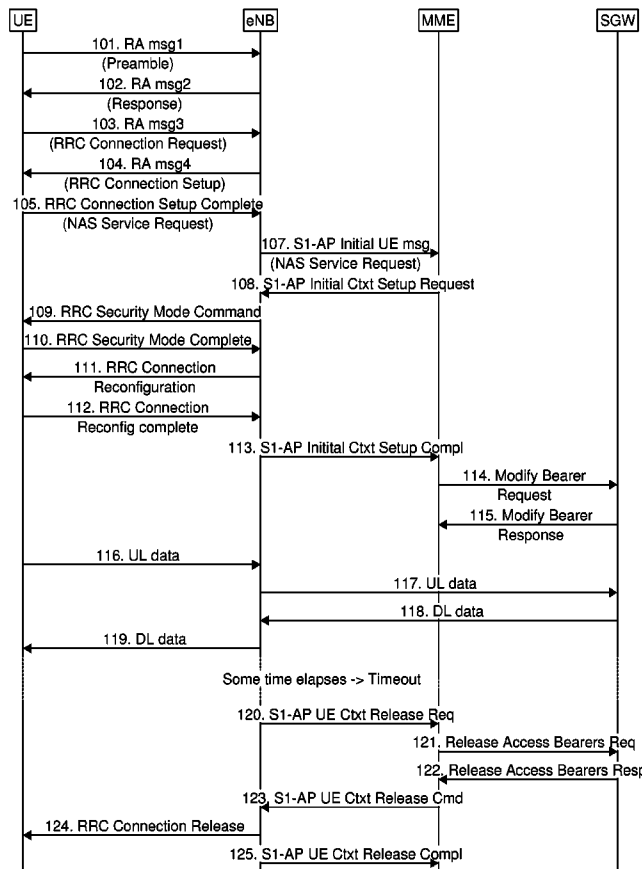
(57) **ABSTRACT**

A method performed by a wireless device for handling suspension of a connection between the wireless device and a wireless communications network. The wireless communications network comprises the first network node. The wireless device receives information from the first network node. The information comprises a first identifier identifying a first cell area. The first cell area comprises one or more cells capable of resuming the connection. The wireless device suspends the connection in a first cell out of the one or more cells. When selecting a cell access method for a cell the wireless device determines whether or not resumption of the connection is allowed in the cell based on the information from the network node.

(21) Appl. No.: **14/891,863**  
(22) PCT Filed: **Oct. 20, 2015**  
(86) PCT No.: **PCT/SE2015/051111**  
§ 371 (c)(1),  
(2) Date: **Nov. 17, 2015**

**Related U.S. Application Data**

(60) Provisional application No. 62/079,821, filed on Nov. 14, 2014, provisional application No. 62/069,382, filed on Oct. 28, 2014.



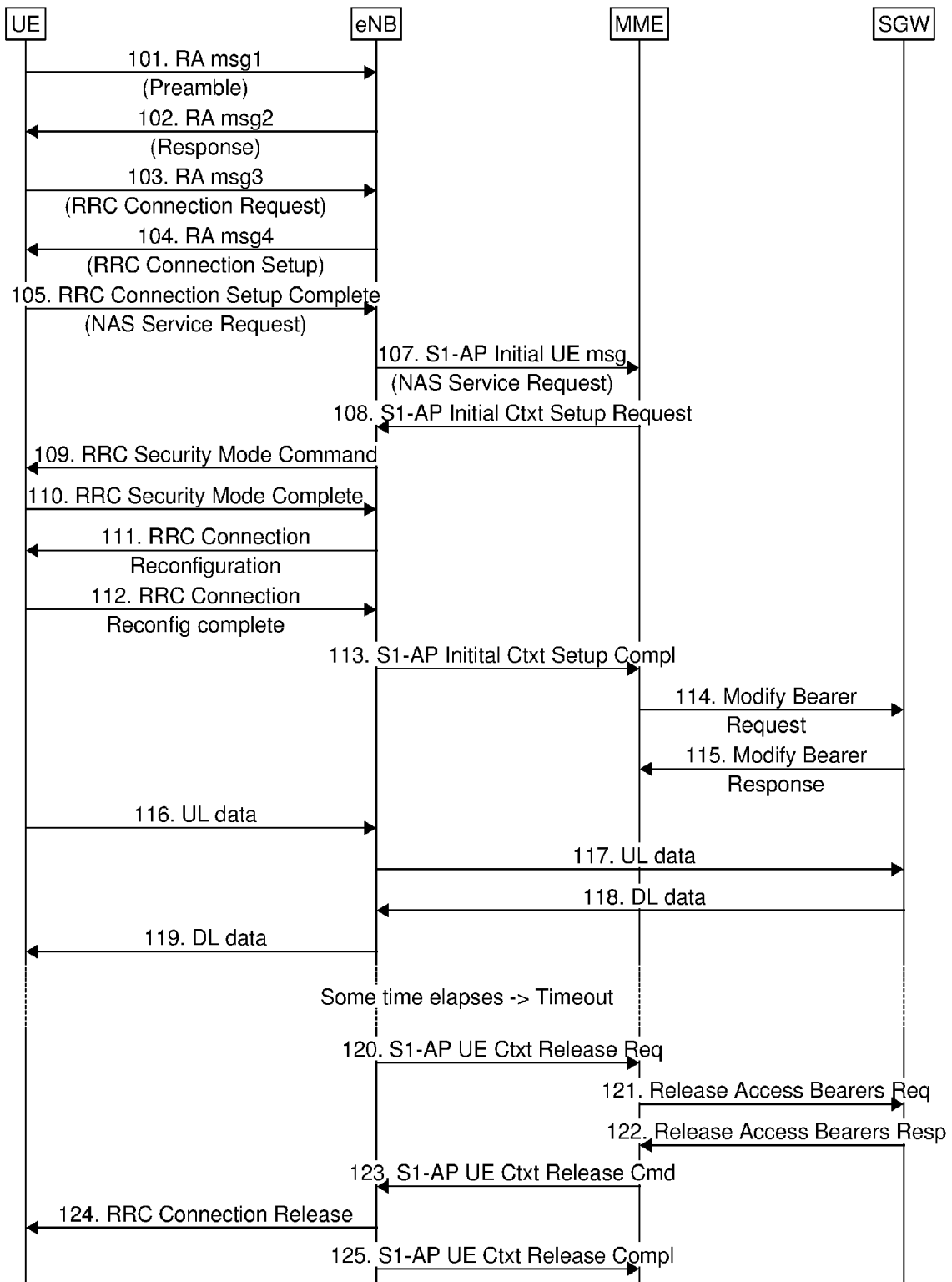


Fig. 1

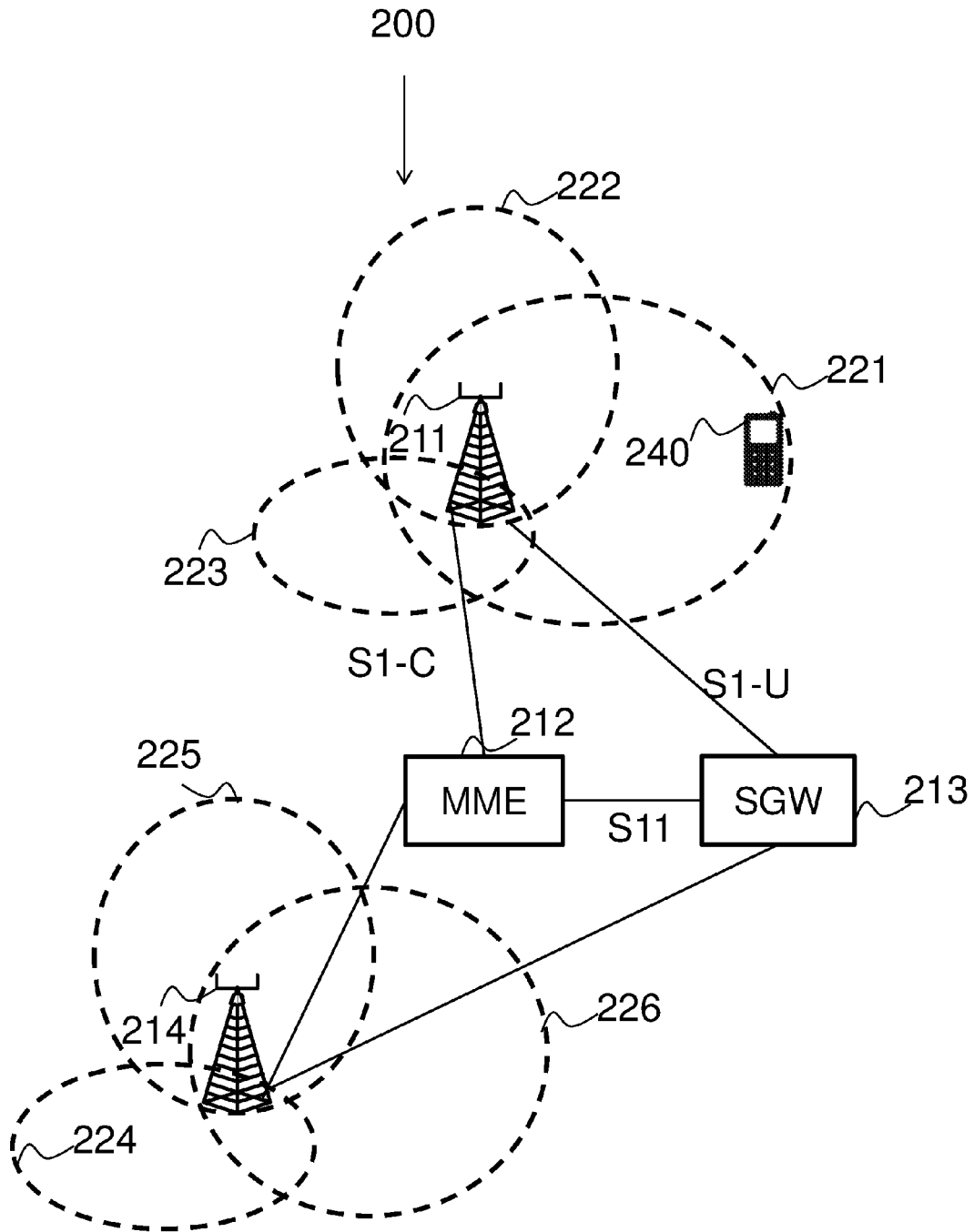


Fig. 2a

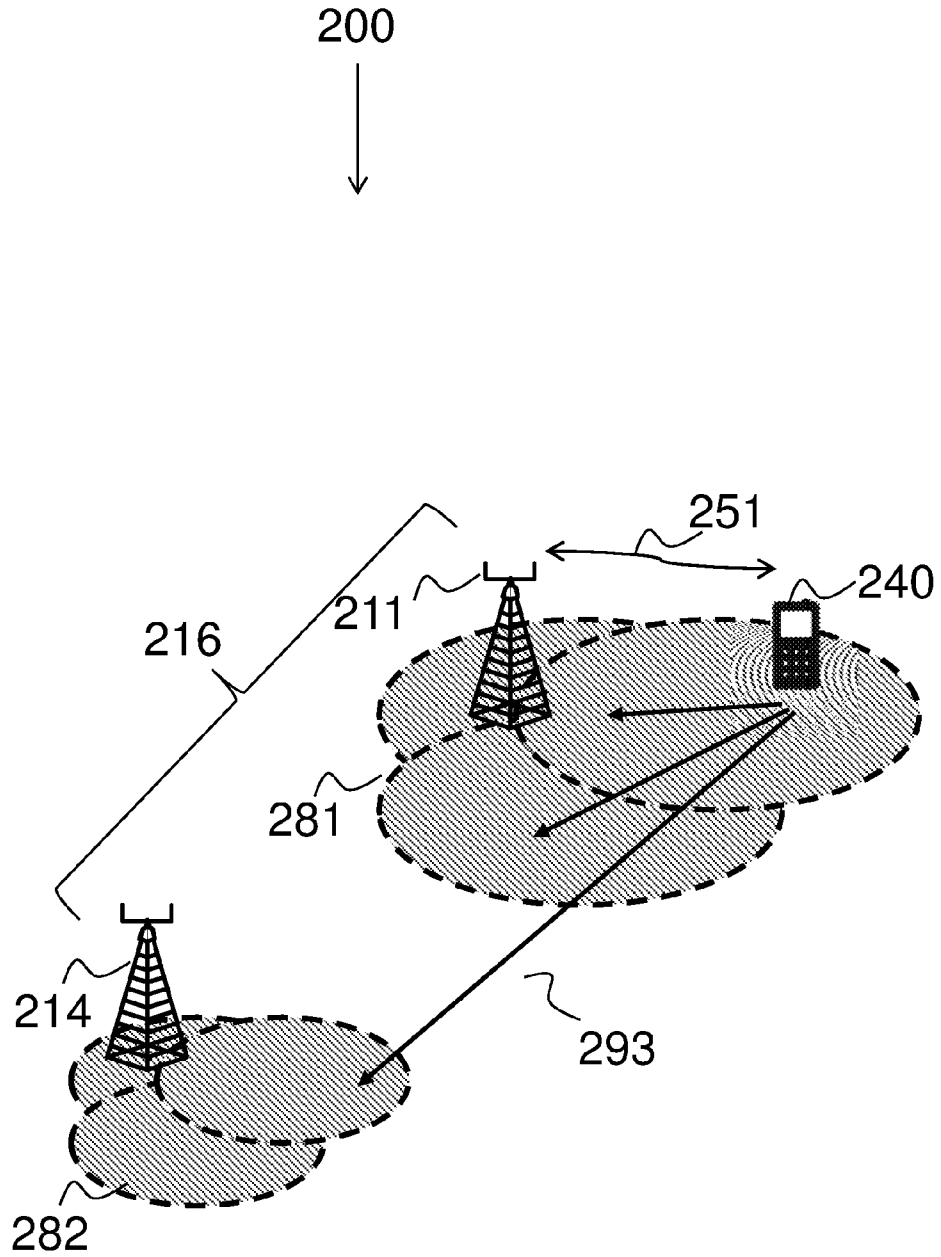


Fig. 2b

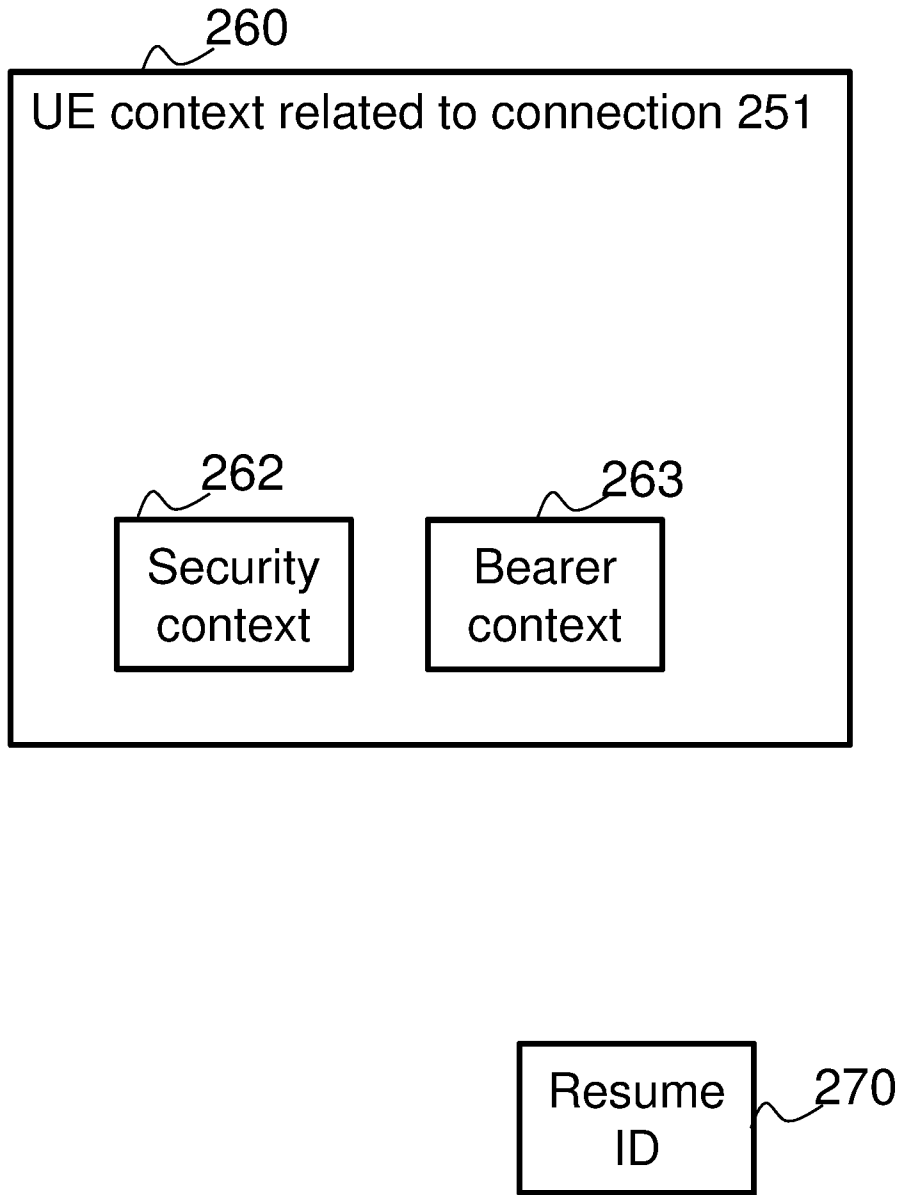


Fig. 2c

# Explore Litigation Insights

Docket Alarm provides insights to develop a more informed litigation strategy and the peace of mind of knowing you're on top of things.

## Real-Time Litigation Alerts



Keep your litigation team up-to-date with **real-time alerts** and advanced team management tools built for the enterprise, all while greatly reducing PACER spend.

Our comprehensive service means we can handle Federal, State, and Administrative courts across the country.

## Advanced Docket Research



With over 230 million records, Docket Alarm's cloud-native docket research platform finds what other services can't. Coverage includes Federal, State, plus PTAB, TTAB, ITC and NLRB decisions, all in one place.

Identify arguments that have been successful in the past with full text, pinpoint searching. Link to case law cited within any court document via Fastcase.

## Analytics At Your Fingertips



Learn what happened the last time a particular judge, opposing counsel or company faced cases similar to yours.

Advanced out-of-the-box PTAB and TTAB analytics are always at your fingertips.

## API

Docket Alarm offers a powerful API (application programming interface) to developers that want to integrate case filings into their apps.

## LAW FIRMS

Build custom dashboards for your attorneys and clients with live data direct from the court.

Automate many repetitive legal tasks like conflict checks, document management, and marketing.

## FINANCIAL INSTITUTIONS

Litigation and bankruptcy checks for companies and debtors.

## E-DISCOVERY AND LEGAL VENDORS

Sync your system to PACER to automate legal marketing.