

[54] ELECTROLYTIC LIQUID PURIFICATION PROCESS AND APPARATUS

[75] Inventor: Bruce Davies, Kenmore, Wash.

[73] Assignees: Advanced Water Systems, Inc., Woodinville; Water Regeneration Systems, Inc., Kirkland, both of Wash.

[21] Appl. No.: 163,501

[22] Filed: Mar. 2, 1988

[51] Int. Cl.⁴ C02F 1/46; C25B 15/08; C25B 9/00; B01D 13/02

[52] U.S. Cl. 204/152; 204/188; 204/229; 204/240; 204/276; 204/269; 204/306; 210/748

[58] Field of Search 204/269, 270, 275-276, 204/229, 240, 130, 131, 136, 152, 306, 188; 210/748

[56] References Cited

U.S. PATENT DOCUMENTS

- 2,864,750 12/1958 Hughes, Jr. et al. 204/275 X
- 3,523,891 8/1970 Mehl 204/269
- 3,679,556 7/1972 Doevenspeck 204/269
- 3,728,245 4/1973 Preis et al. 204/275

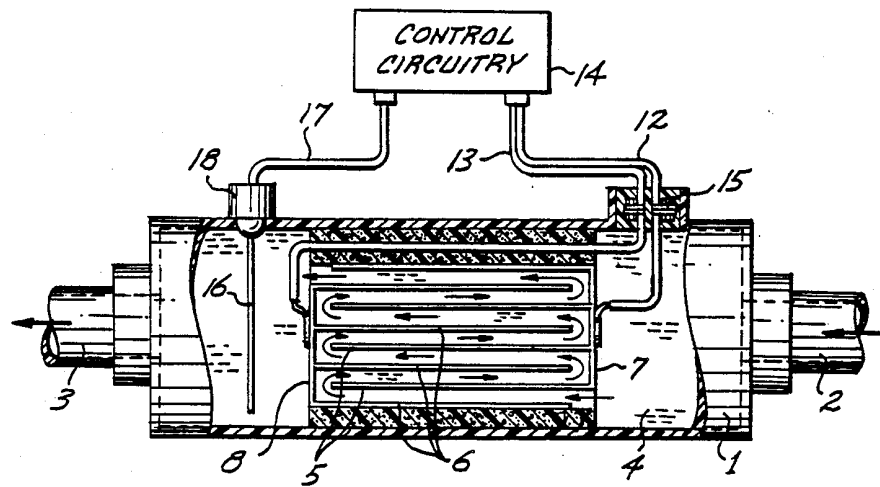
- 3,835,018 9/1974 Casanovas et al. 204/228
- 3,865,710 2/1975 Phipps 204/276 X
- 3,925,176 12/1975 Okert 204/152
- 4,419,206 12/1983 Frame 204/149 X
- 4,425,216 1/1984 Neymeyer 204/270
- 4,436,601 3/1984 Branchick et al. 204/149
- 4,572,775 2/1986 Paniagua 204/276 X
- 4,623,436 11/1986 Umehara 204/149

Primary Examiner—Donald R. Valentine
Attorney, Agent, or Firm—Christensen, O'Connor, Johnson & Kindness

[57] ABSTRACT

Liquid is clarified by passing it between spaced plates of a stack including two interleaved sets of plates, one set being connected to one direct current lead and the other set being connected to the other direct current lead. The liquid may flow through the spaces between the plates in a single direction in parallel paths or may flow in a serpentine path. Impurities removed from the liquid adhere to the plates and may be purged from the plates periodically by reversing the direction of flow of current between the plates. Impurities sloughed off the plates are trapped in a filter in the cell outlet.

4 Claims, 11 Drawing Sheets



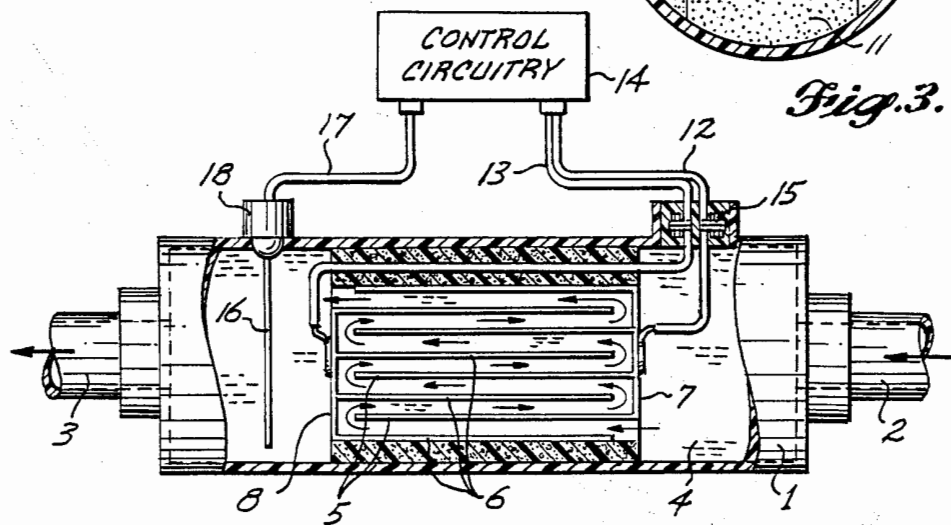
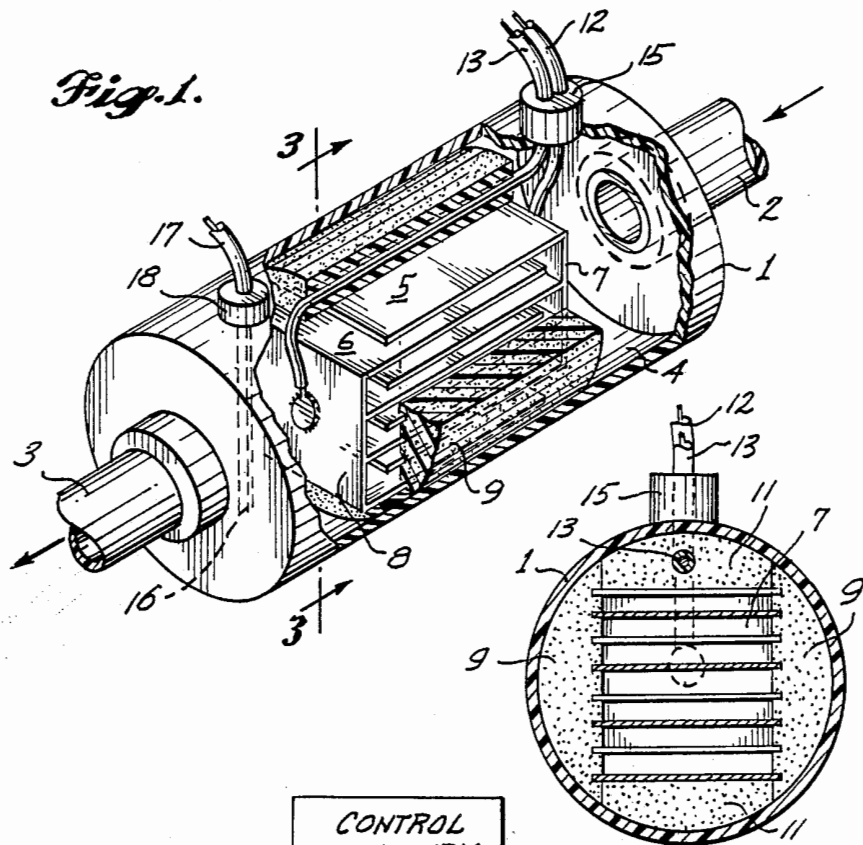


Fig. 3.

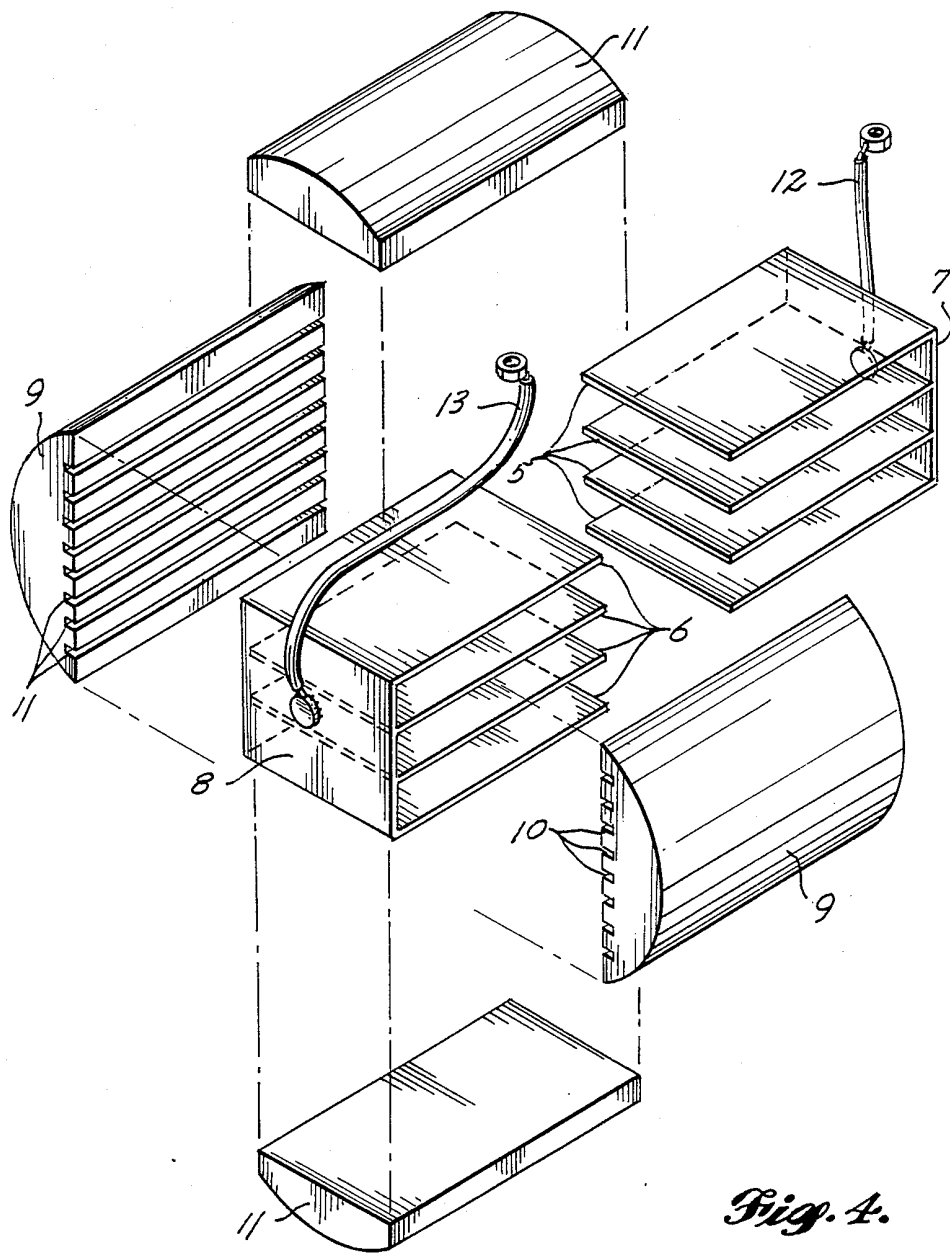


Fig. 4.

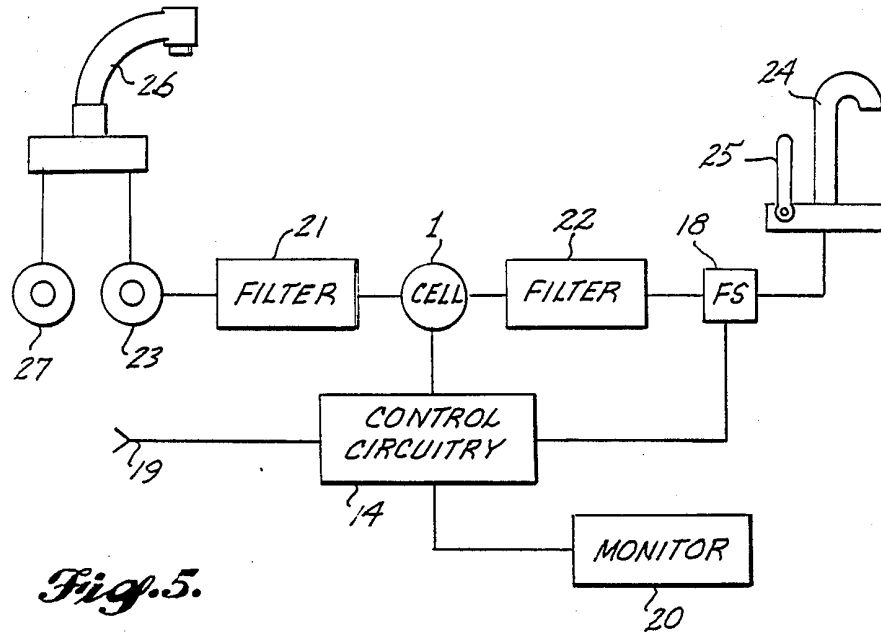


Fig. 5.

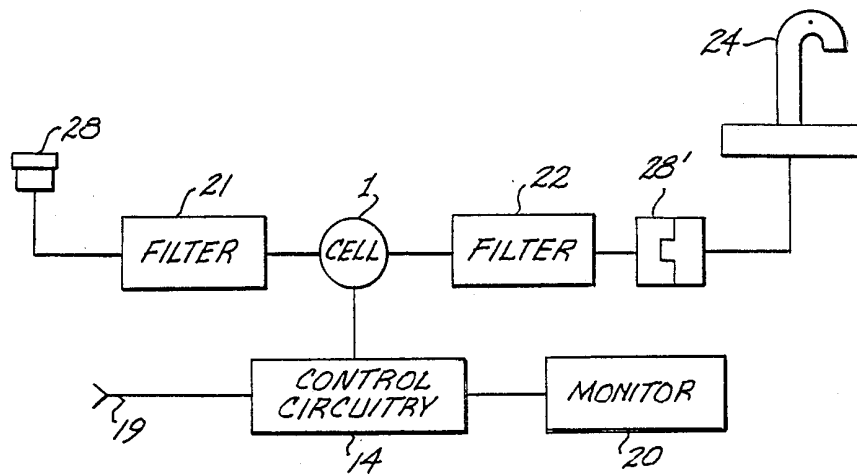


Fig. 6.

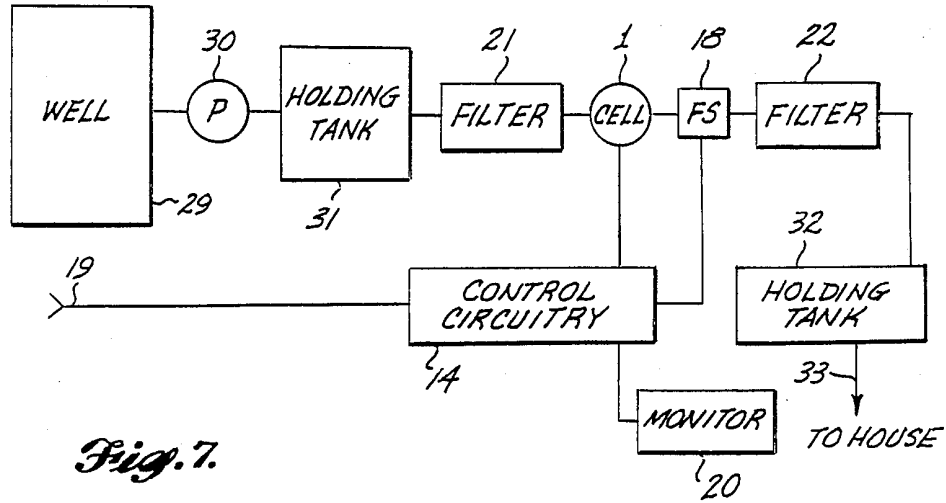


Fig. 7.

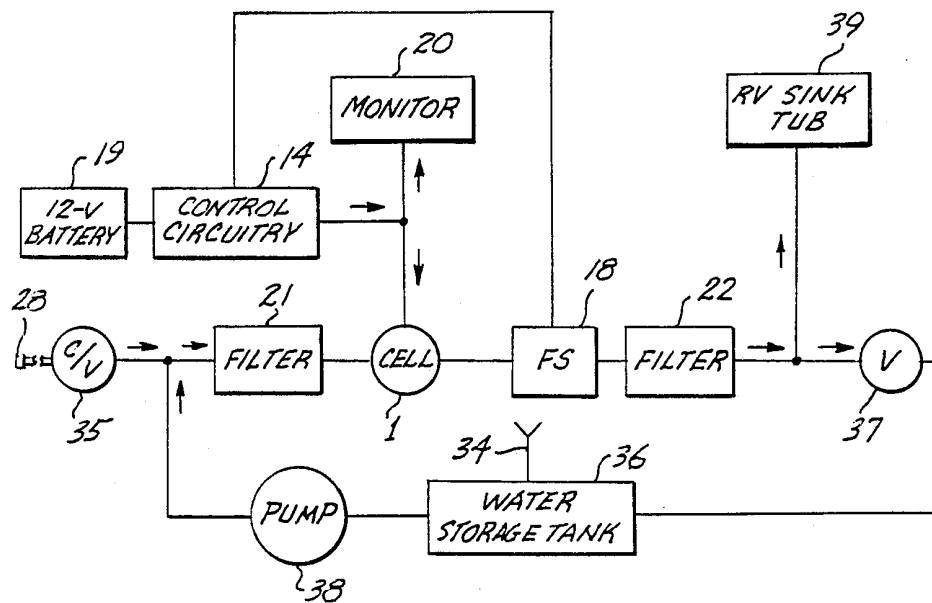


Fig. 8.

Explore Litigation Insights

Docket Alarm provides insights to develop a more informed litigation strategy and the peace of mind of knowing you're on top of things.

Real-Time Litigation Alerts



Keep your litigation team up-to-date with **real-time alerts** and advanced team management tools built for the enterprise, all while greatly reducing PACER spend.

Our comprehensive service means we can handle Federal, State, and Administrative courts across the country.

Advanced Docket Research



With over 230 million records, Docket Alarm's cloud-native docket research platform finds what other services can't. Coverage includes Federal, State, plus PTAB, TTAB, ITC and NLRB decisions, all in one place.

Identify arguments that have been successful in the past with full text, pinpoint searching. Link to case law cited within any court document via Fastcase.

Analytics At Your Fingertips



Learn what happened the last time a particular judge, opposing counsel or company faced cases similar to yours.

Advanced out-of-the-box PTAB and TTAB analytics are always at your fingertips.

API

Docket Alarm offers a powerful API (application programming interface) to developers that want to integrate case filings into their apps.

LAW FIRMS

Build custom dashboards for your attorneys and clients with live data direct from the court.

Automate many repetitive legal tasks like conflict checks, document management, and marketing.

FINANCIAL INSTITUTIONS

Litigation and bankruptcy checks for companies and debtors.

E-DISCOVERY AND LEGAL VENDORS

Sync your system to PACER to automate legal marketing.