



- [54] APPARATUS AND METHOD FOR CONCURRENT SEARCH CONTENT ADDRESSABLE MEMORY CIRCUIT
- [75] Inventors: **Jon Ashor Loschke; Charley Michael Parks; Mark Franklin; Kenneth Wade Jones**, all of Austin, Tex.
- [73] Assignee: **Motorola, Inc.**, Schaumburg, Ill.
- [21] Appl. No.: **08/722,587**
- [22] Filed: **Sep. 27, 1996**
- [51] Int. Cl.<sup>6</sup> ..... **H04L 12/28**
- [52] U.S. Cl. .... **370/392; 370/395; 370/429**
- [58] Field of Search ..... 370/399, 382, 370/383, 392, 393, 395, 397, 409, 416, 429; 365/49, 190, 189.12, 230.02; 395/200, 200.2, 200.21

5,467,349 11/1995 Huey et al. .... 370/60.1  
 5,684,954 11/1997 Kaiserswerth et al. .... 395/200.2

Primary Examiner—Ajit Patel  
 Assistant Examiner—Chiho Andrew Lee  
 Attorney, Agent, or Firm—Lee E. Chastain

[57] ABSTRACT

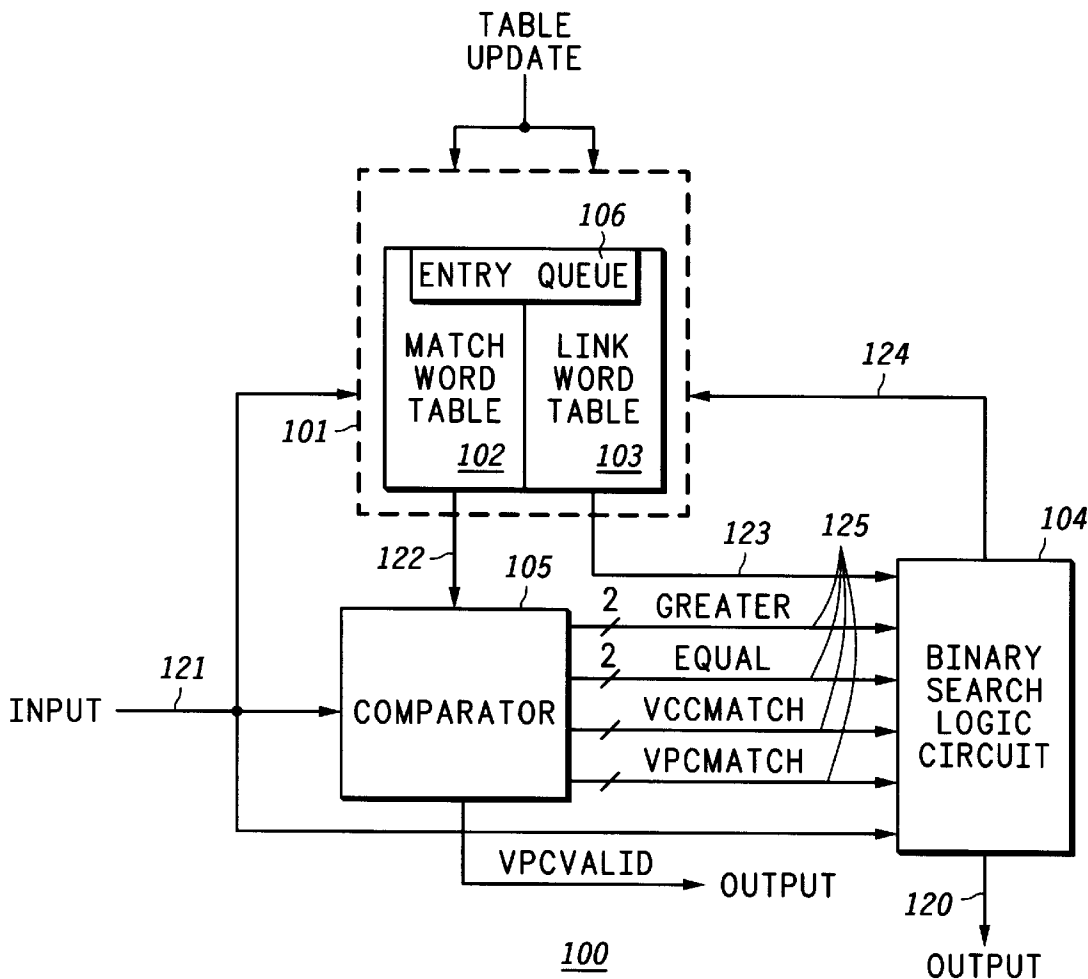
A circuit and method is provided for implementing a content addressable memory circuit (100) in which an output word is produced which corresponds to the content of a reference word containing an ATM header. According to a first aspect, a binary search logic circuit (104) binarily searches the memory array (101) to find a match word whose content is equal to that of the reference word. Output signals indicate either that a match has been found or that the binary searching of the memory array (101) should continue at addresses either above or below the location address of the match word. According to a second aspect, the content addressable memory circuit (100) performs a concurrent search of switching identifiers, virtual circuit identifiers and virtual path identifiers, to determine if a virtual path connection or virtual circuit connection exists for an ATM header.

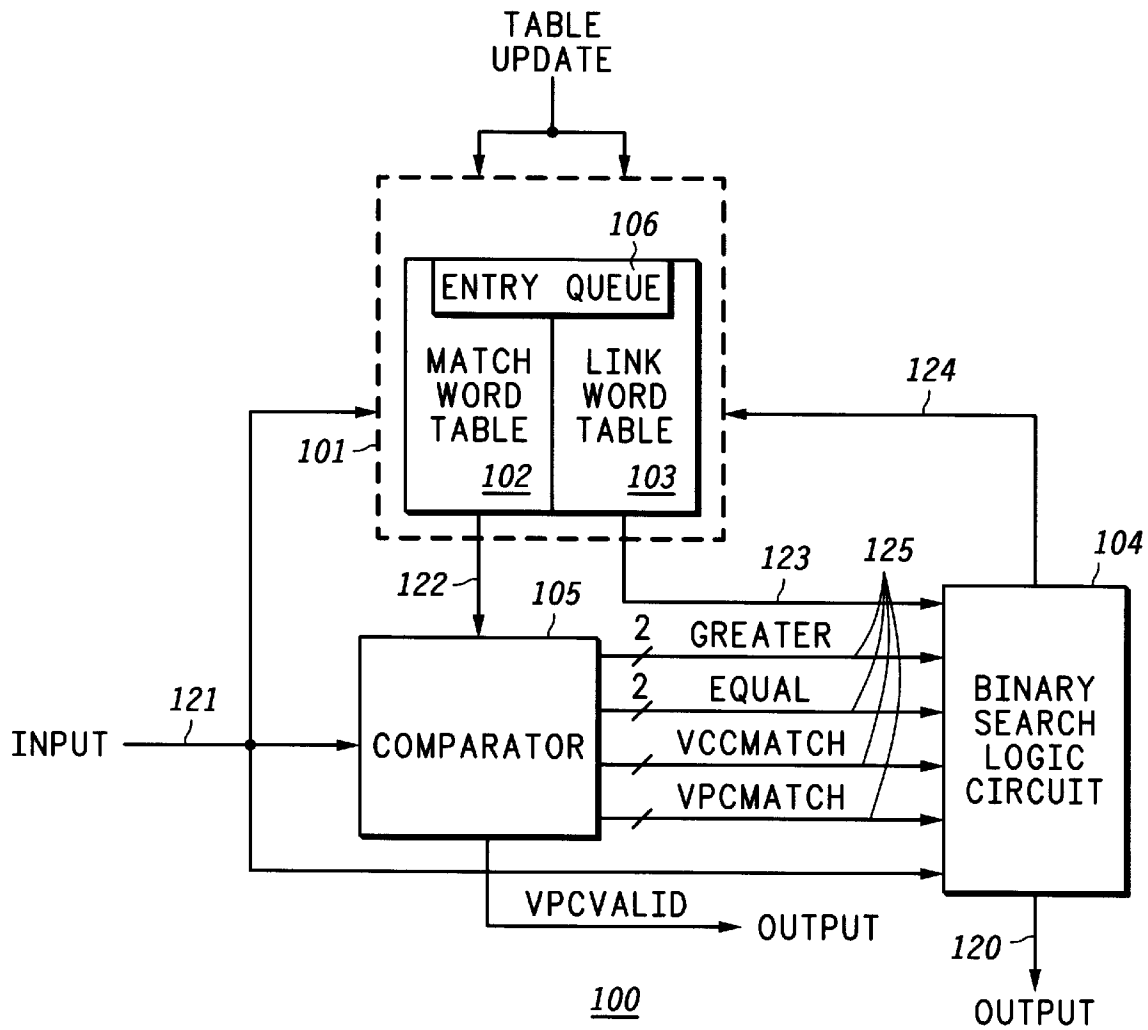
[56] References Cited

U.S. PATENT DOCUMENTS

- 5,414,707 5/1995 Johnston et al. .... 370/79
- 5,422,838 6/1995 Lin ..... 365/49

12 Claims, 8 Drawing Sheets





**FIG. 1**

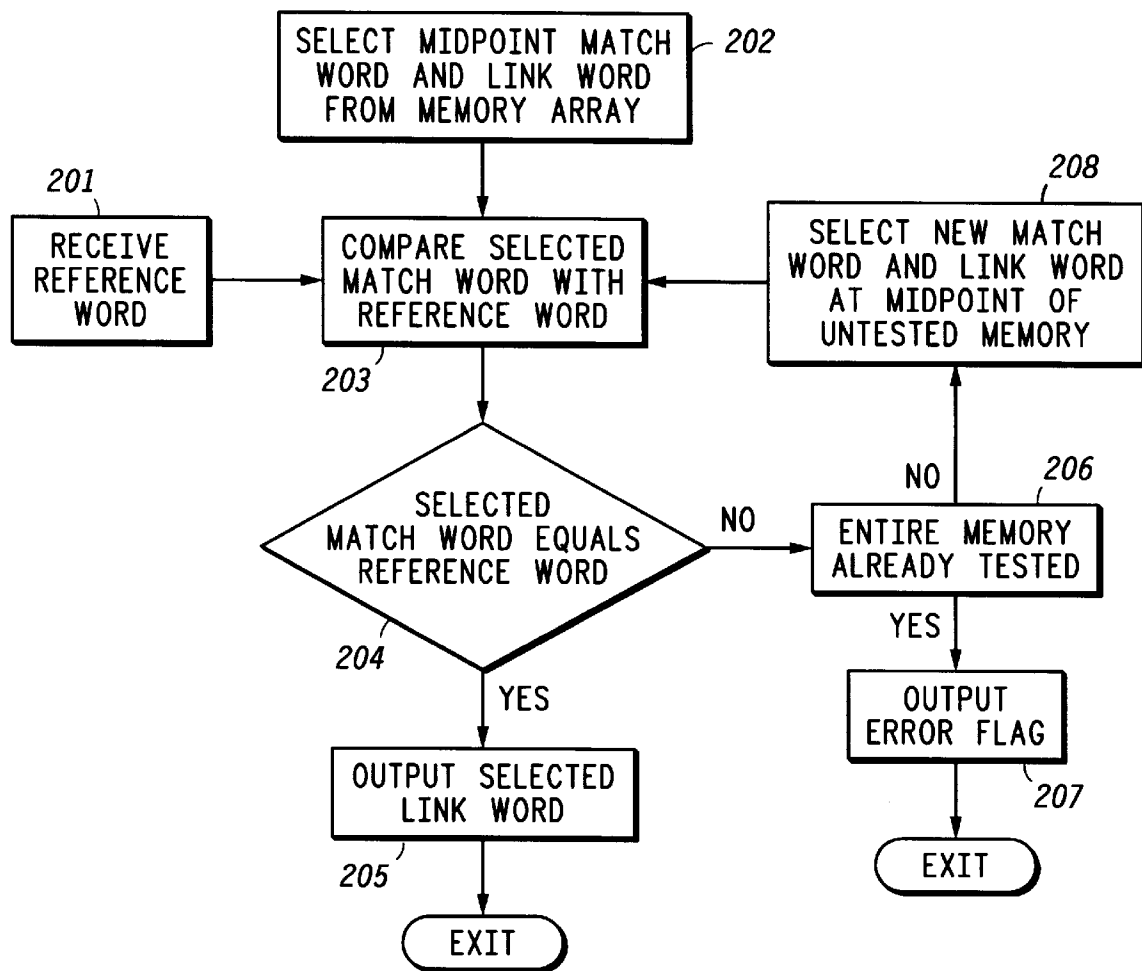
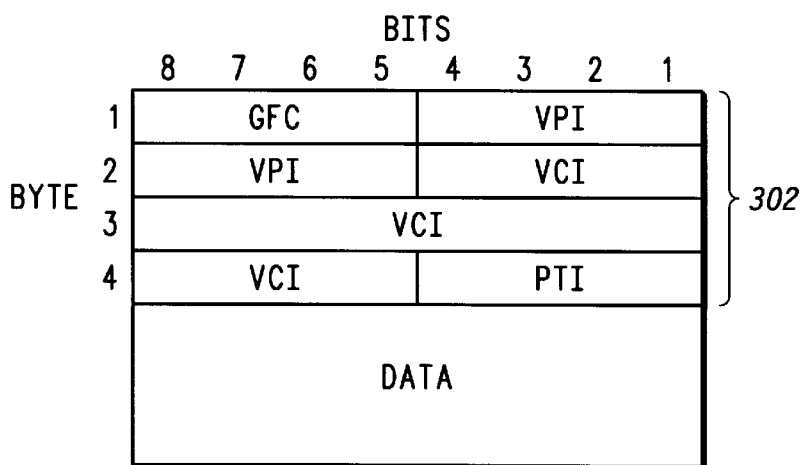
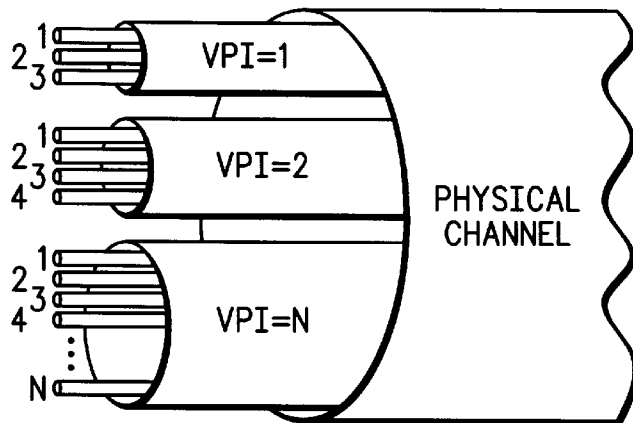


FIG. 2



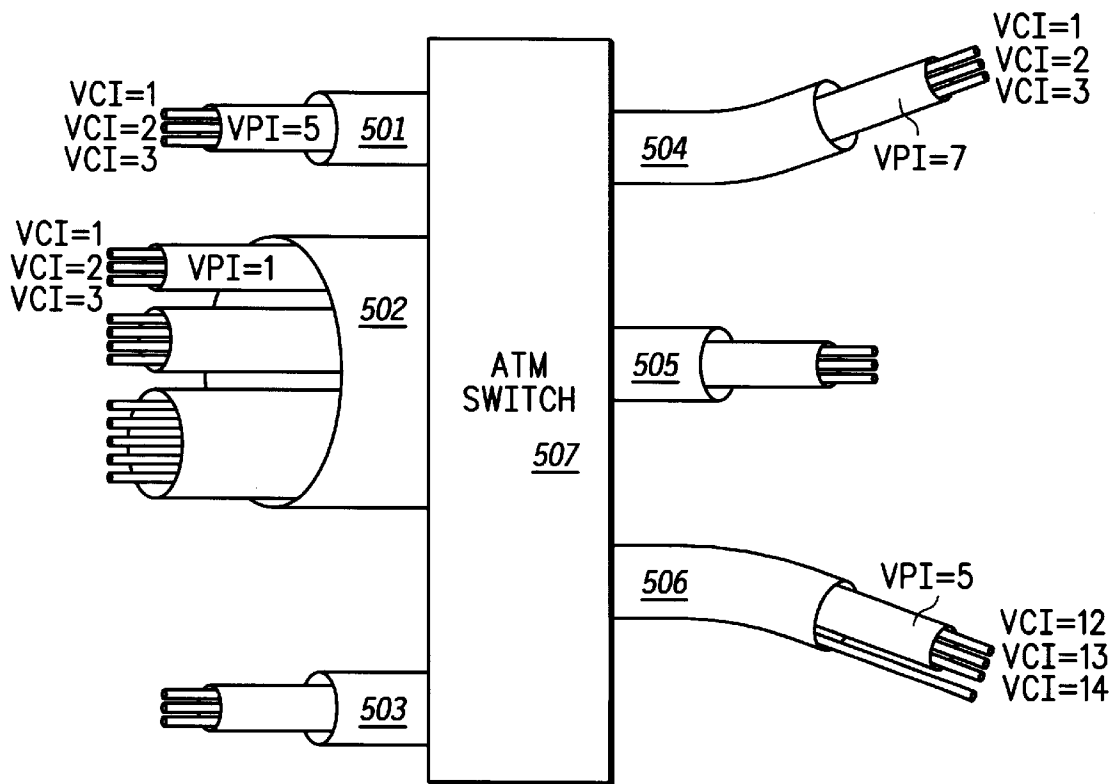
300

FIG. 3



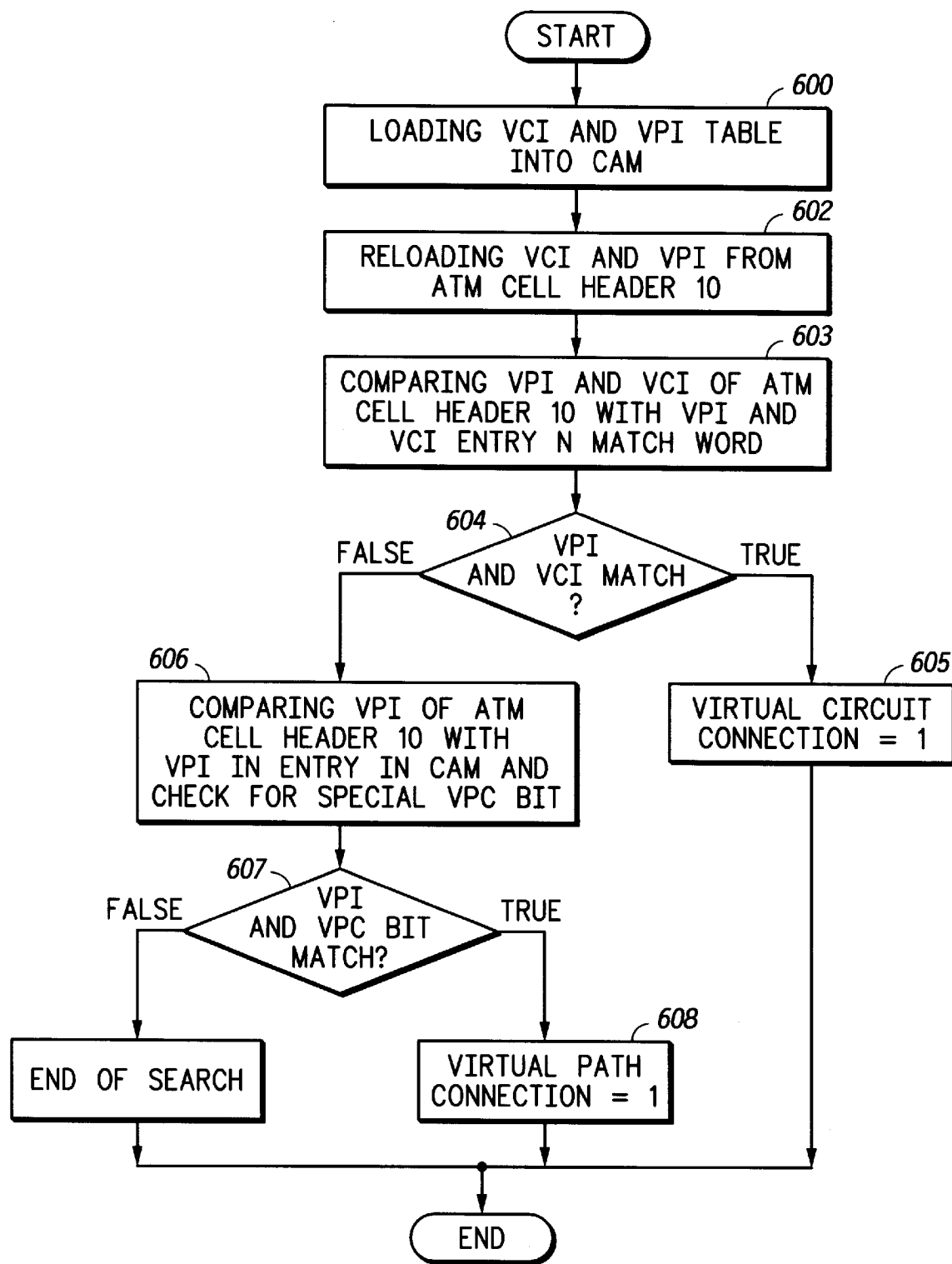
400

**FIG. 4**



500

**FIG. 5**



600

FIG. 6

# Explore Litigation Insights

Docket Alarm provides insights to develop a more informed litigation strategy and the peace of mind of knowing you're on top of things.

## Real-Time Litigation Alerts



Keep your litigation team up-to-date with **real-time alerts** and advanced team management tools built for the enterprise, all while greatly reducing PACER spend.

Our comprehensive service means we can handle Federal, State, and Administrative courts across the country.

## Advanced Docket Research



With over 230 million records, Docket Alarm's cloud-native docket research platform finds what other services can't. Coverage includes Federal, State, plus PTAB, TTAB, ITC and NLRB decisions, all in one place.

Identify arguments that have been successful in the past with full text, pinpoint searching. Link to case law cited within any court document via Fastcase.

## Analytics At Your Fingertips



Learn what happened the last time a particular judge, opposing counsel or company faced cases similar to yours.

Advanced out-of-the-box PTAB and TTAB analytics are always at your fingertips.

## API

Docket Alarm offers a powerful API (application programming interface) to developers that want to integrate case filings into their apps.

## LAW FIRMS

Build custom dashboards for your attorneys and clients with live data direct from the court.

Automate many repetitive legal tasks like conflict checks, document management, and marketing.

## FINANCIAL INSTITUTIONS

Litigation and bankruptcy checks for companies and debtors.

## E-DISCOVERY AND LEGAL VENDORS

Sync your system to PACER to automate legal marketing.