

**United States Patent** [19]

**Maria et al.**

[11] **Patent Number:** **6,092,110**

[45] **Date of Patent:** **\*Jul. 18, 2000**

[54] **APPARATUS FOR FILTERING PACKETS USING A DEDICATED PROCESSOR**

5,826,014 10/1998 Coley et al. .... 713/201  
 5,848,233 12/1998 Radia et al. .... 713/201  
 5,884,025 3/1999 Baehr et al. .... 713/201

[75] Inventors: **Arturo Maria**, Bellevue; **Leslie Dale Owens**, Issaquah, both of Wash.

**FOREIGN PATENT DOCUMENTS**

0 743 777 11/1996 European Pat. Off. .  
 WO96/13113 5/1996 WIPO .

[73] Assignee: **AT&T Wireless Svcs. Inc.**, Redmond, Wash.

**OTHER PUBLICATIONS**

[ \* ] Notice: This patent issued on a continued prosecution application filed under 37 CFR 1.53(d), and is subject to the twenty year patent term provisions of 35 U.S.C. 154(a)(2).

Patent Abstracts of Japan, vol. 097, No. 010, Oct. 31, 1997 & JP 09-152969 A (Kenwood Corp.), Jun. 10, 1997.

Skokowski P.: Penny-Pinching Networks for Distributed Control, Control Engineering, vol. 39, No. 5, Jan. 1992, pp. 35-37.

Andrew S. Tanenbaum: Computer Networks, 1996, Prentice-Hall International, Upper Saddle River, New Jersey, US, pp. 7-16.

*Primary Examiner*—Viet D. Vu

[21] Appl. No.: **08/956,993**

[22] Filed: **Oct. 23, 1997**

[57] **ABSTRACT**

[51] **Int. Cl.<sup>7</sup>** ..... **G06F 13/00**

[52] **U.S. Cl.** ..... **709/225; 709/238; 709/250; 713/201**

A dedicated data packet filtering processor whose only function is to filter data packets based on a list of source IP addresses stored in high-speed memory of the processor. The processor has a specialized operating system which controls the operation of the processor. The processor examines the source IP address of each received data packet to determine if the source IP address matches one of the stored source IP addresses, and if there is a match, either discards or forwards the data packet depending on the processor configuration. The list of source IP addresses are updated by a service provider having a central administrative site. The service provider keeps these lists up to date and periodically updates the source IP addresses stored in the random access memory of the dedicated IP filtering processors.

[58] **Field of Search** ..... 709/217, 218, 709/219, 227, 224, 225, 229, 250, 313, 206, 238; 713/201; 707/9, 10

[56] **References Cited**

**U.S. PATENT DOCUMENTS**

4,715,030 12/1987 Koch et al. .... 370/85  
 4,888,796 12/1989 Olivo, Jr. .... 379/101.01  
 5,172,111 12/1992 Olivo, Jr. .... 386/126  
 5,396,493 3/1995 Sugiyama ..... 370/403  
 5,448,698 9/1995 Wilkes ..... 709/245  
 5,481,720 1/1996 Loucks et al. .... 364/284.2  
 5,561,770 10/1996 de Bruijn et al. .... 709/225  
 5,606,668 2/1997 Shwed ..... 380/42  
 5,615,340 3/1997 Dai et al. .... 709/250

**21 Claims, 4 Drawing Sheets**

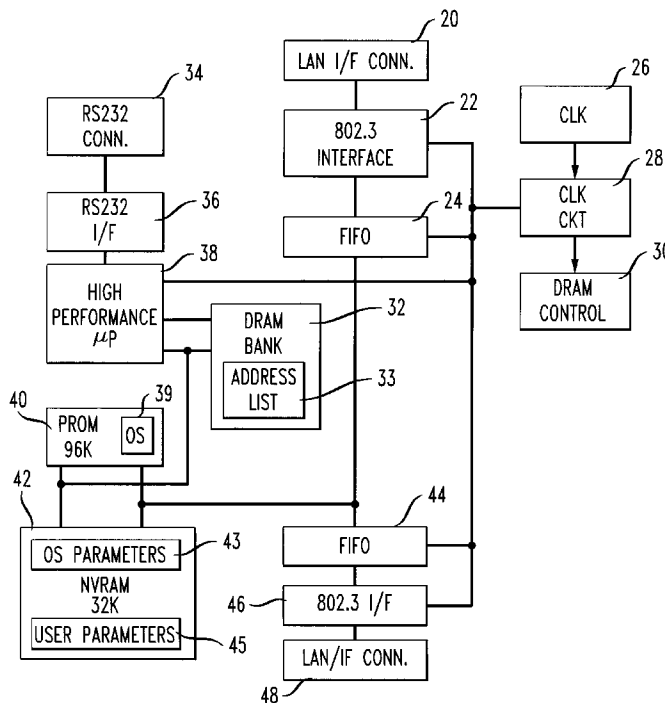


FIG. 1

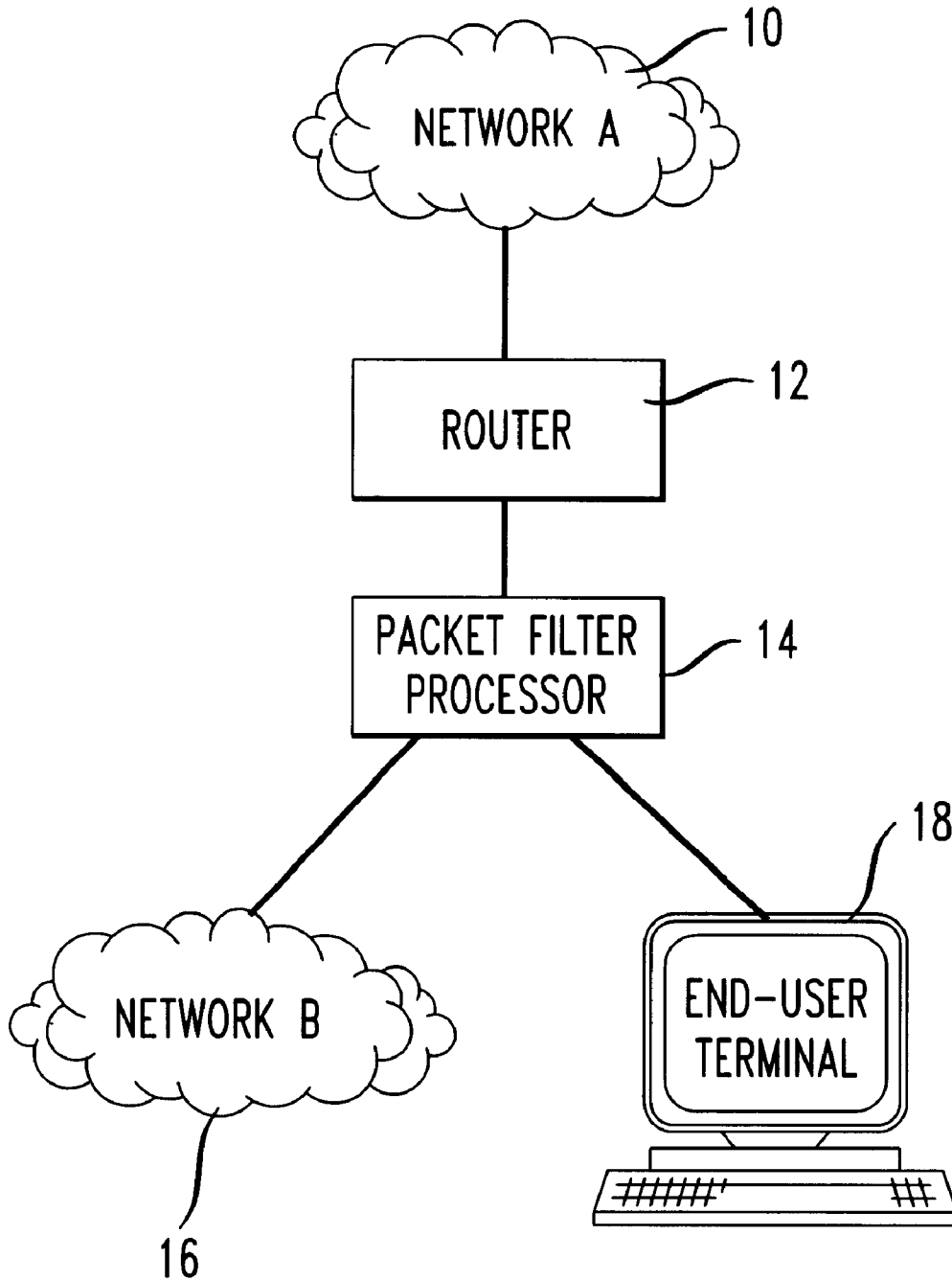


FIG. 2

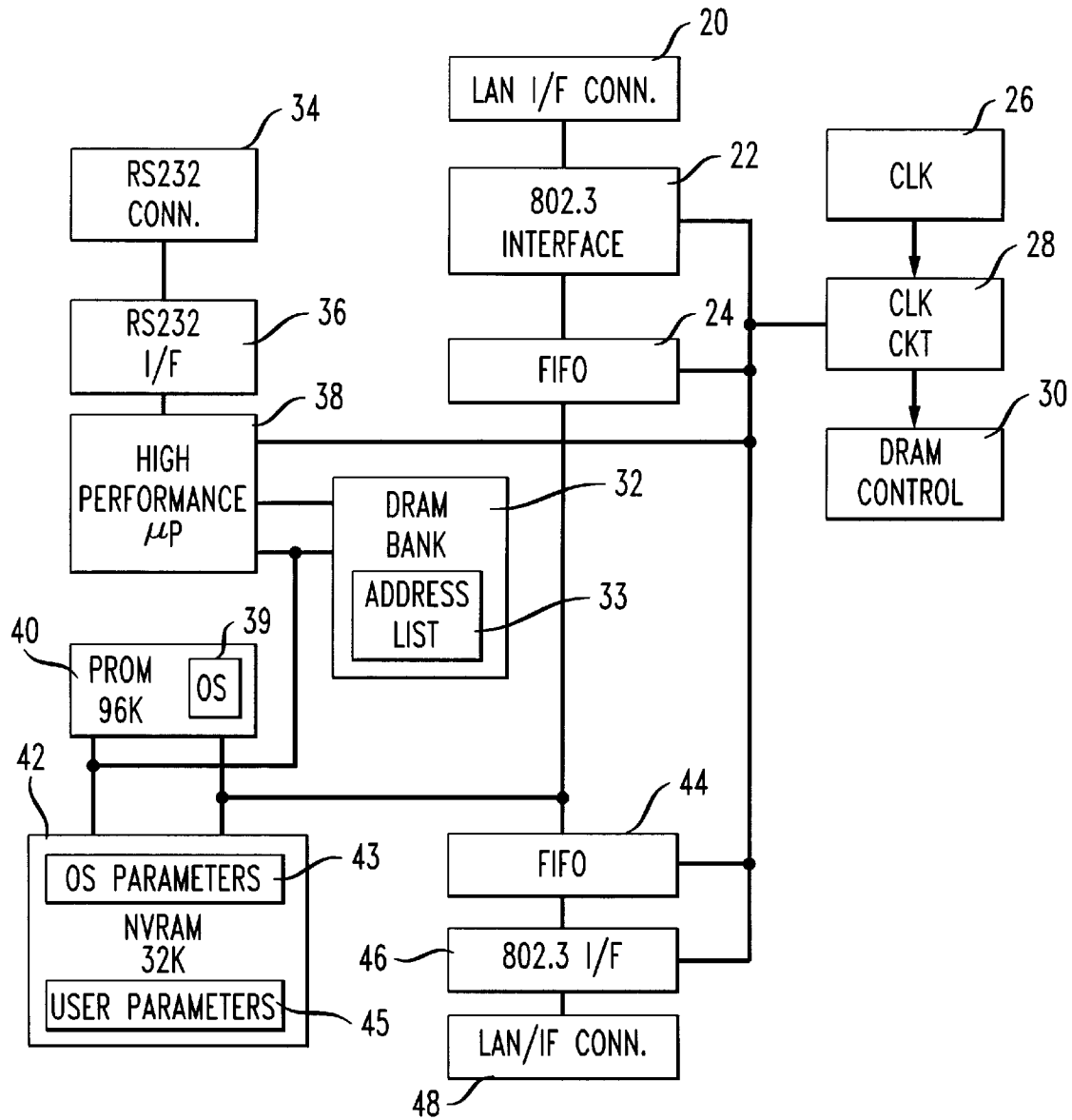


FIG. 3

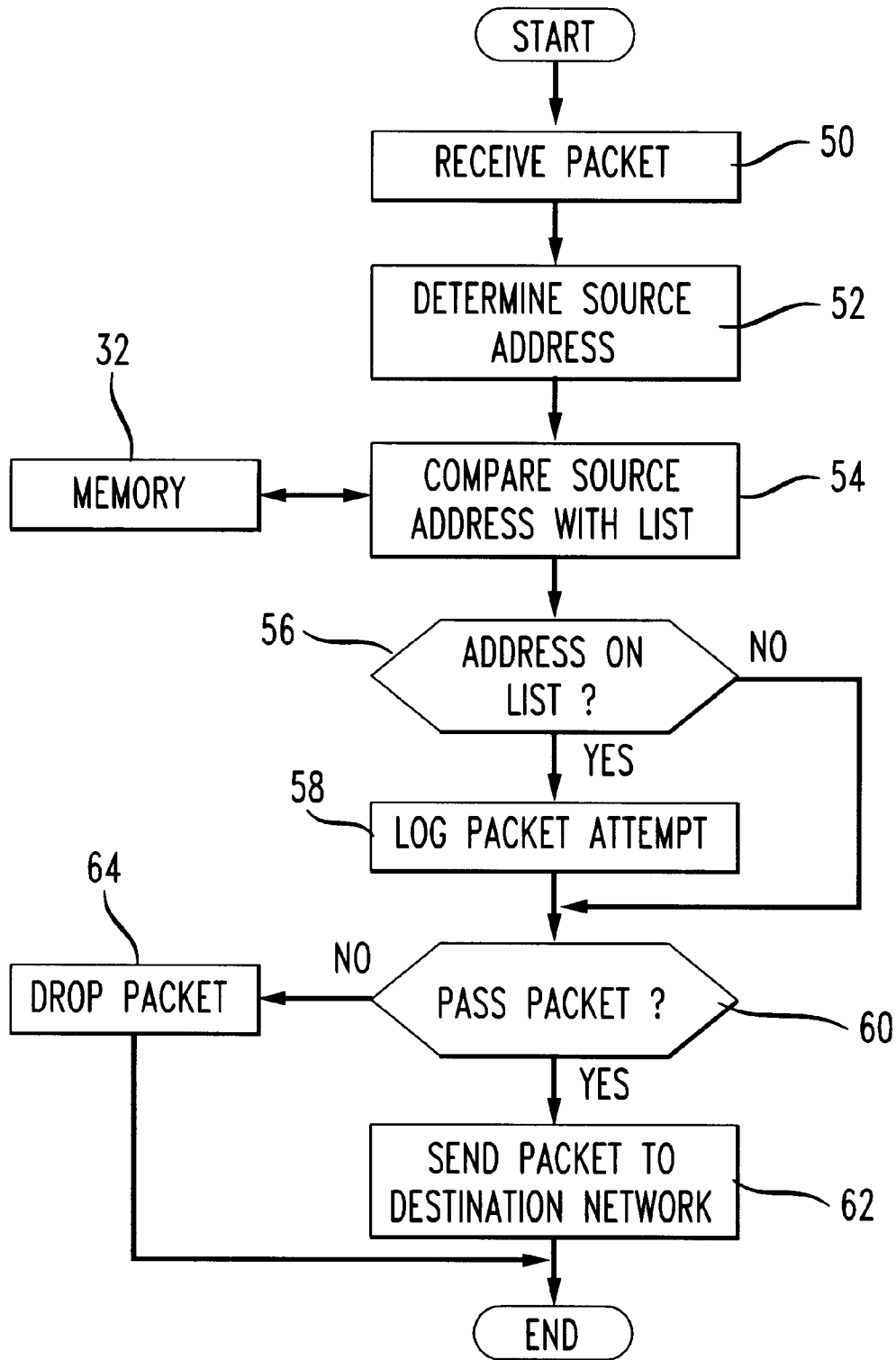
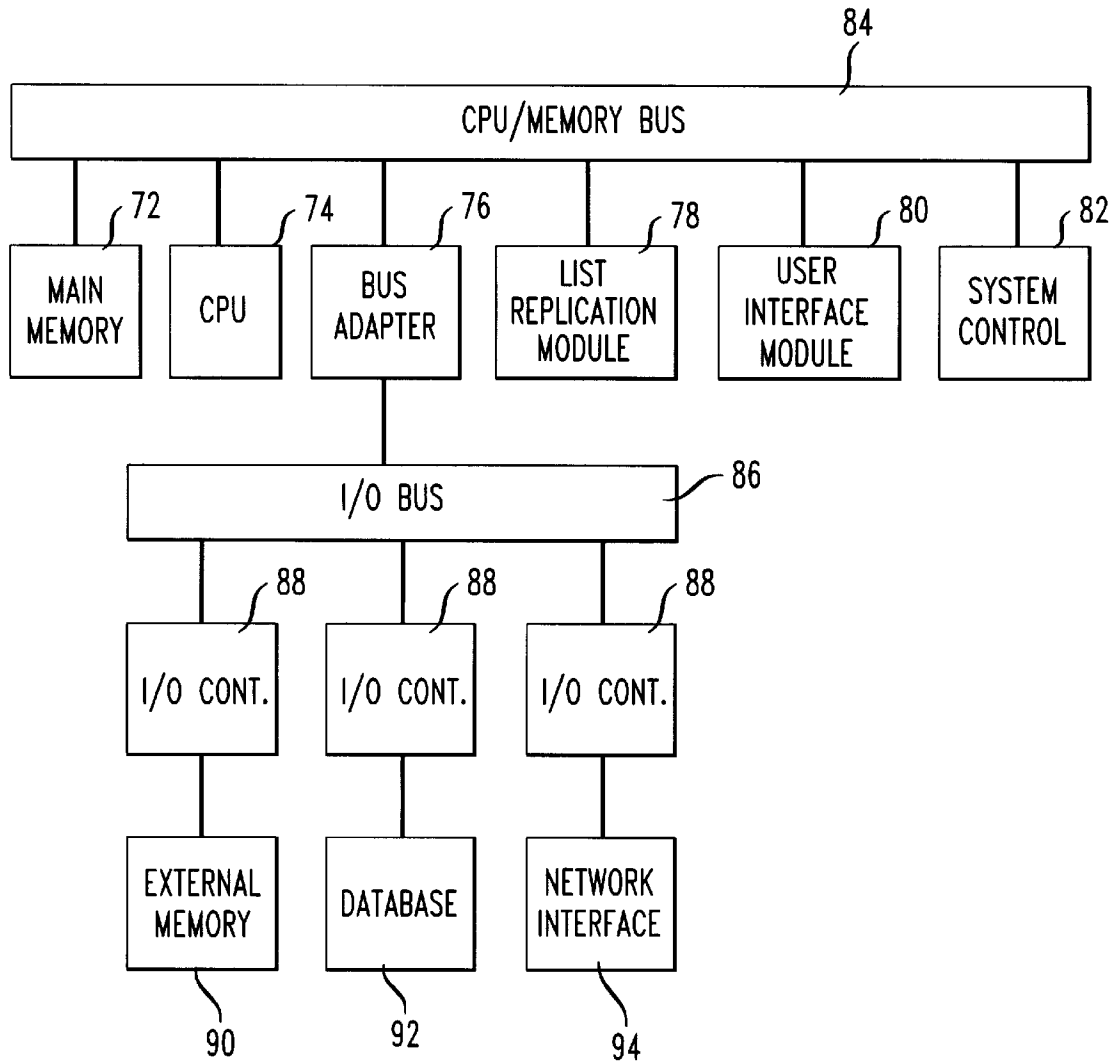


FIG. 4



# Explore Litigation Insights

Docket Alarm provides insights to develop a more informed litigation strategy and the peace of mind of knowing you're on top of things.

## Real-Time Litigation Alerts



Keep your litigation team up-to-date with **real-time alerts** and advanced team management tools built for the enterprise, all while greatly reducing PACER spend.

Our comprehensive service means we can handle Federal, State, and Administrative courts across the country.

## Advanced Docket Research



With over 230 million records, Docket Alarm's cloud-native docket research platform finds what other services can't. Coverage includes Federal, State, plus PTAB, TTAB, ITC and NLRB decisions, all in one place.

Identify arguments that have been successful in the past with full text, pinpoint searching. Link to case law cited within any court document via Fastcase.

## Analytics At Your Fingertips



Learn what happened the last time a particular judge, opposing counsel or company faced cases similar to yours.

Advanced out-of-the-box PTAB and TTAB analytics are always at your fingertips.

## API

Docket Alarm offers a powerful API (application programming interface) to developers that want to integrate case filings into their apps.

## LAW FIRMS

Build custom dashboards for your attorneys and clients with live data direct from the court.

Automate many repetitive legal tasks like conflict checks, document management, and marketing.

## FINANCIAL INSTITUTIONS

Litigation and bankruptcy checks for companies and debtors.

## E-DISCOVERY AND LEGAL VENDORS

Sync your system to PACER to automate legal marketing.