



US 20050083270A1

(19) **United States**

(12) **Patent Application Publication**  
Miyazawa

(10) **Pub. No.: US 2005/0083270 A1**

(43) **Pub. Date: Apr. 21, 2005**

(54) **ELECTRONIC CIRCUIT, METHOD OF DRIVING THE SAME, ELECTRONIC DEVICE, ELECTRO-OPTICAL DEVICE, ELECTRONIC APPARATUS, AND METHOD OF DRIVING THE ELECTRONIC DEVICE**

Jun. 29, 2004 (JP) ..... 2004-191357

**Publication Classification**

(51) **Int. Cl.<sup>7</sup> ..... G09G 3/30**

(52) **U.S. Cl. .... 345/76**

(75) **Inventor: Takashi Miyazawa, Suwa-shi (JP)**

Correspondence Address:  
**OLIFF & BERRIDGE, PLC**  
**P.O. BOX 19928**  
**ALEXANDRIA, VA 22320 (US)**

(57) **ABSTRACT**

A gate of a driving transistor is set to a offset level corresponding to the threshold of the driving transistor by an initializing current flowing between a source and a drain of the driving transistor or a compensating transistor for the driving transistor. A conduction state of the driving transistor is set according to a gate voltage of the gate of the driving transistor that corresponds to a data signal and the threshold of the driving transistor. A current of which a level corresponds to the conduction state and of which the direction is opposite to the direction of the initializing current flows through driving transistor.

(73) **Assignee: Seiko Epson Corporation, Tokyo (JP)**

(21) **Appl. No.: 10/921,951**

(22) **Filed: Aug. 20, 2004**

(30) **Foreign Application Priority Data**

Aug. 29, 2003 (JP) ..... 2003-306804

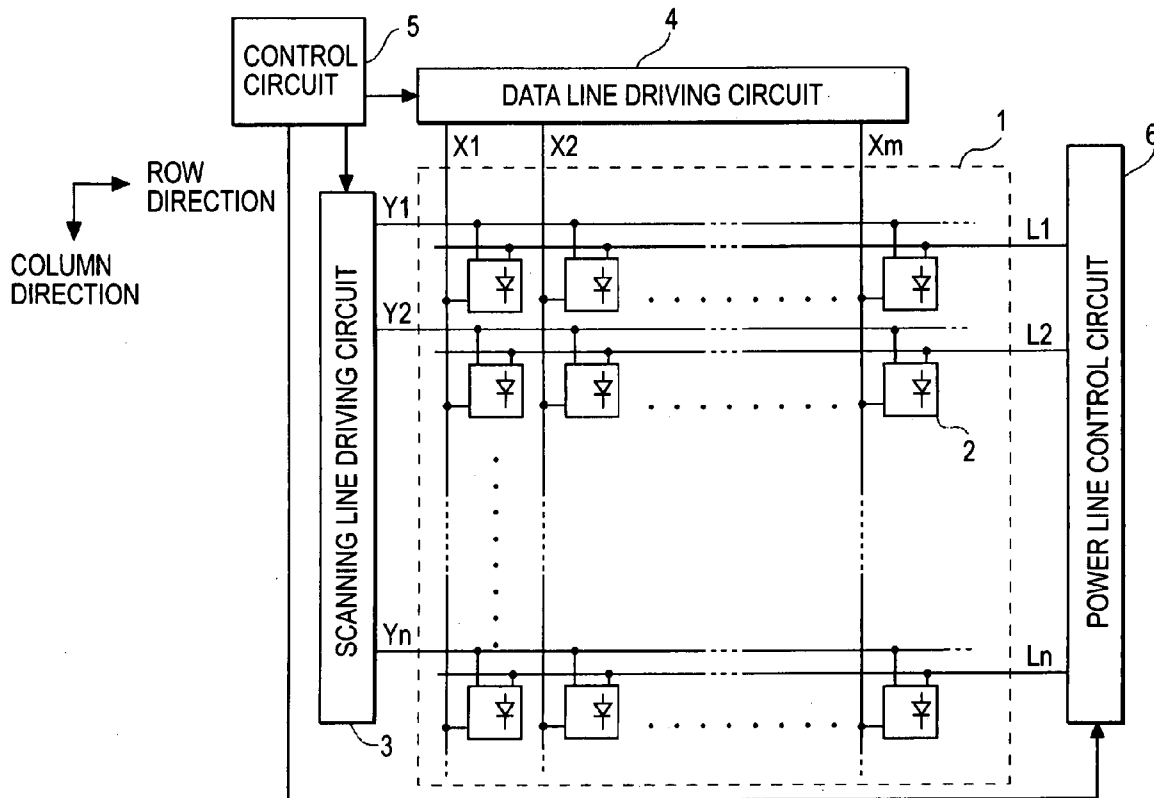


FIG. 1

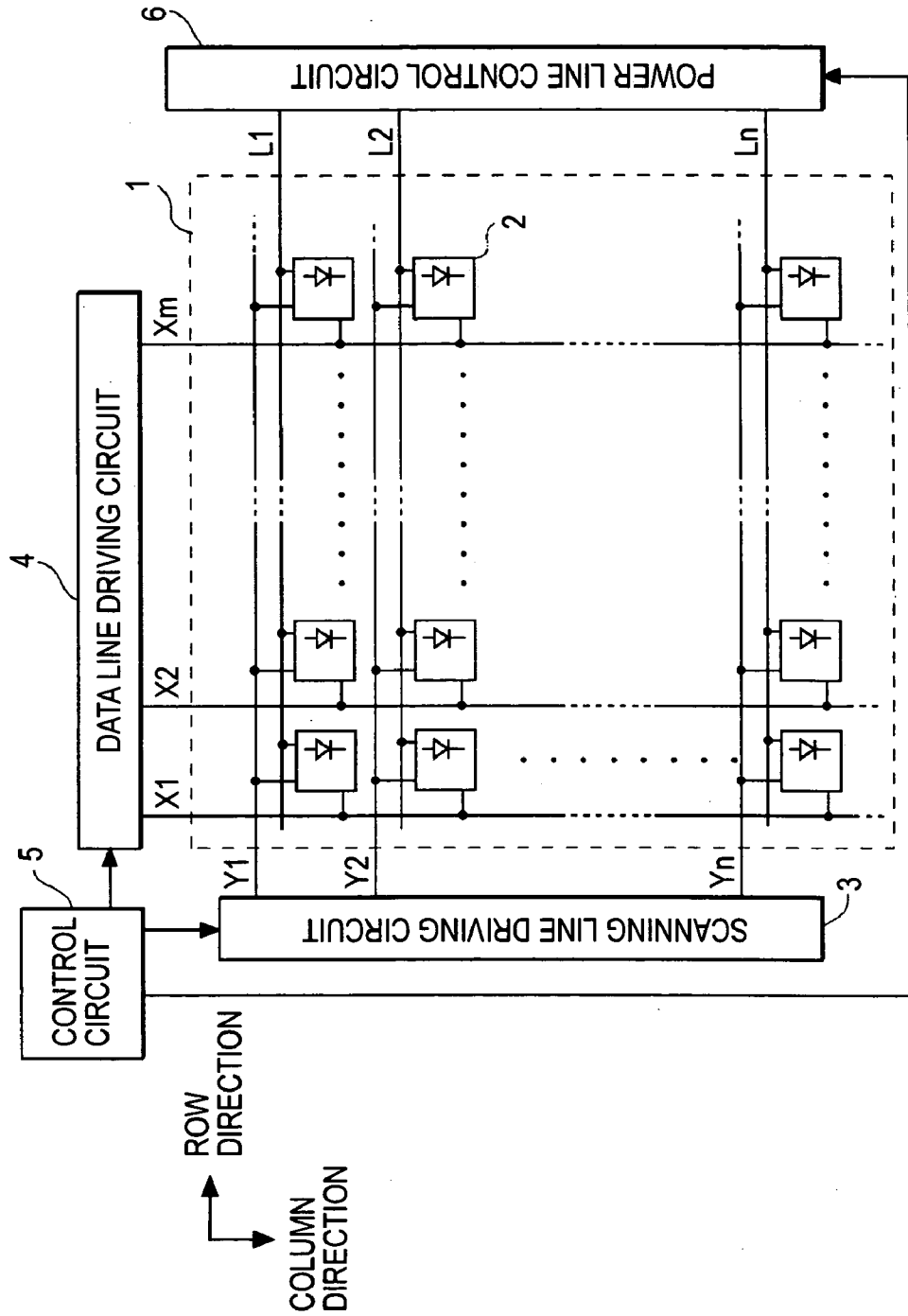


FIG. 2

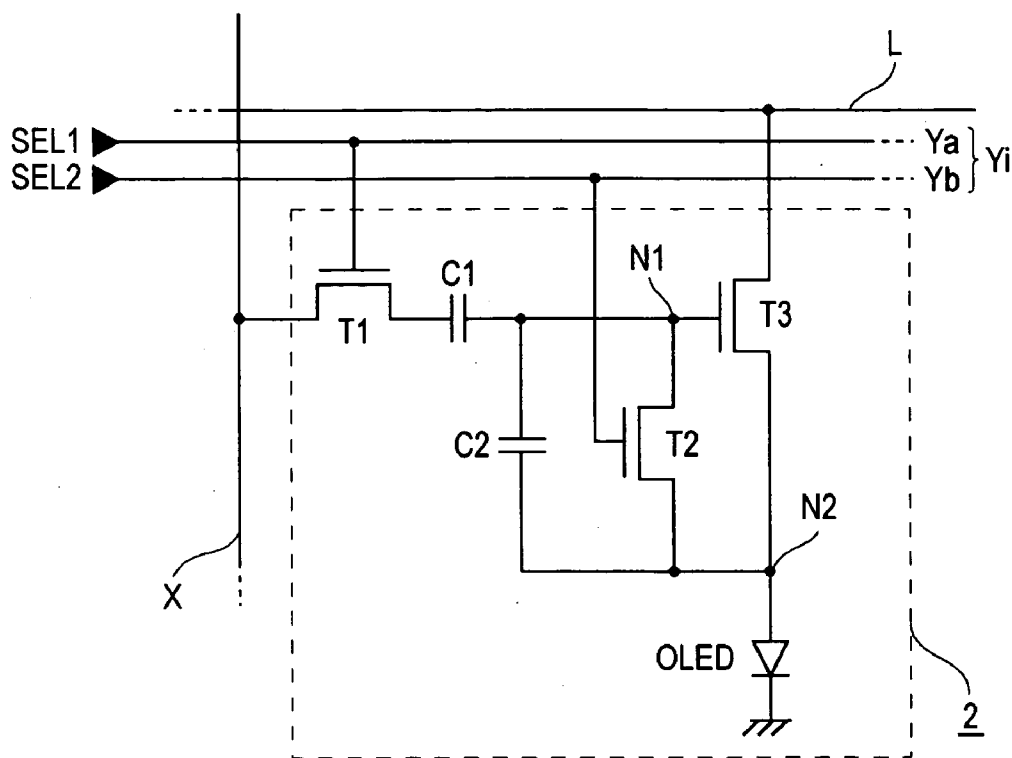


FIG. 3

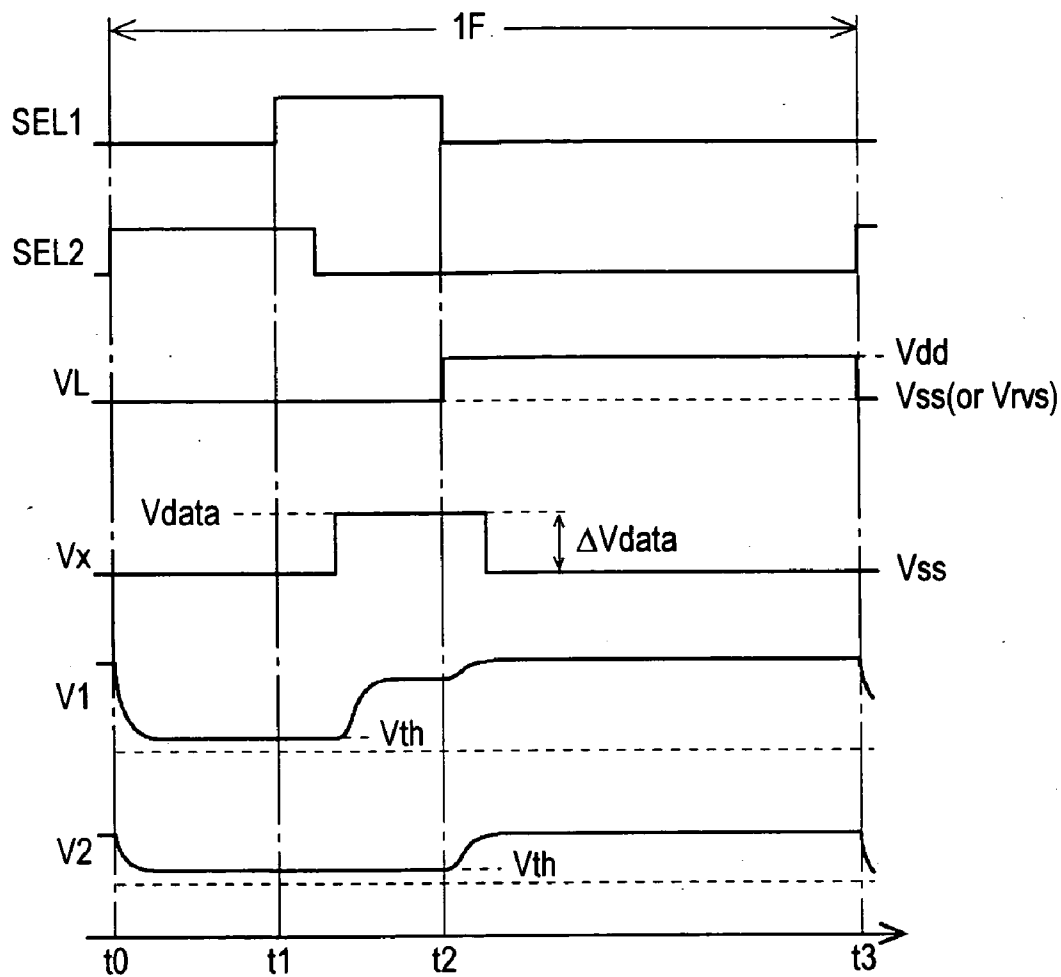


FIG. 4A

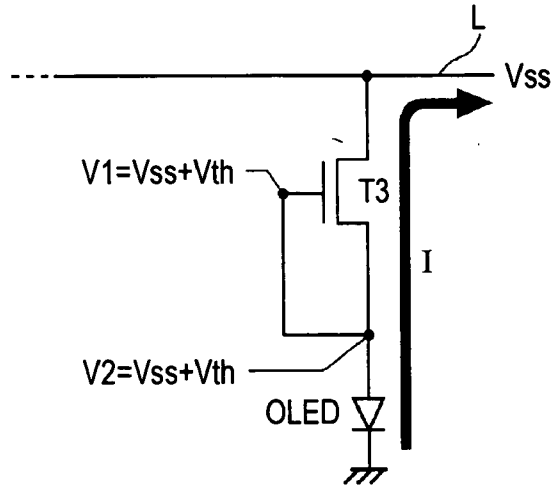


FIG. 4B

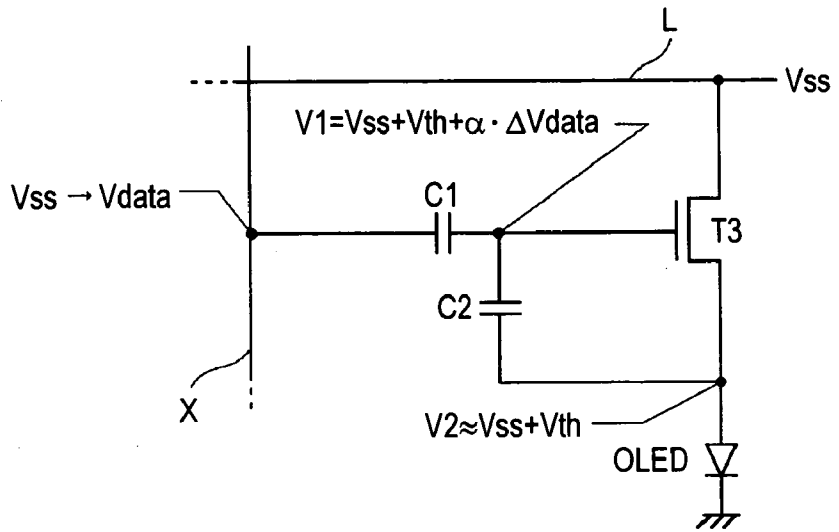
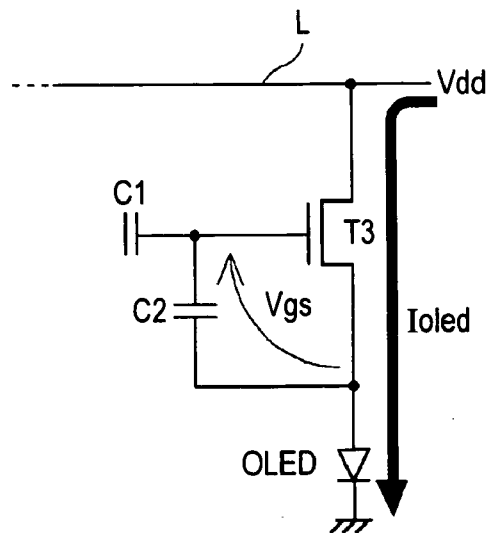


FIG. 4C



# Explore Litigation Insights

Docket Alarm provides insights to develop a more informed litigation strategy and the peace of mind of knowing you're on top of things.

## Real-Time Litigation Alerts



Keep your litigation team up-to-date with **real-time alerts** and advanced team management tools built for the enterprise, all while greatly reducing PACER spend.

Our comprehensive service means we can handle Federal, State, and Administrative courts across the country.

## Advanced Docket Research



With over 230 million records, Docket Alarm's cloud-native docket research platform finds what other services can't. Coverage includes Federal, State, plus PTAB, TTAB, ITC and NLRB decisions, all in one place.

Identify arguments that have been successful in the past with full text, pinpoint searching. Link to case law cited within any court document via Fastcase.

## Analytics At Your Fingertips



Learn what happened the last time a particular judge, opposing counsel or company faced cases similar to yours.

Advanced out-of-the-box PTAB and TTAB analytics are always at your fingertips.

## API

Docket Alarm offers a powerful API (application programming interface) to developers that want to integrate case filings into their apps.

## LAW FIRMS

Build custom dashboards for your attorneys and clients with live data direct from the court.

Automate many repetitive legal tasks like conflict checks, document management, and marketing.

## FINANCIAL INSTITUTIONS

Litigation and bankruptcy checks for companies and debtors.

## E-DISCOVERY AND LEGAL VENDORS

Sync your system to PACER to automate legal marketing.