

- [54] BILLING IN THE INTERNET
- [75] Inventors: Björn Melen; Mika Hyvönen, both of Jorvas, Finland
- [73] Assignee: Telefonaktiebolaget LM Ericsson, Stockholm, Sweden
- [21] Appl. No.: 08/798,466
- [22] Filed: Feb. 10, 1997

Related U.S. Application Data

- [60] Provisional application No. 60/012,686, Mar. 1, 1996.

[30] Foreign Application Priority Data

Feb. 9, 1996 [FI] Finland 960619

- [51] Int. Cl.⁶ H04M 15/00

- [52] U.S. Cl. 379/114; 379/111; 379/115; 379/229; 705/40

- [58] Field of Search 379/111, 112, 379/114, 115, 118, 120, 121, 122, 127, 130, 134, 136, 201, 219, 220, 221, 229, 230, 100.04, 100.06, 100.03, 100.13, 100.15, 100.17; 370/389, 392, 352, 401; 705/25, 29, 40

[56] References Cited

U.S. PATENT DOCUMENTS

5,146,491	9/1992	Silver et al.	379/114
5,469,500	11/1995	Satter et al.	379/201
5,608,786	3/1997	Gordon	379/100
5,710,918	1/1998	Lagarde et al.	395/610
5,737,414	4/1998	Walker et al.	380/4
5,745,556	4/1998	Ronen	379/127
5,794,221	8/1998	Egendorf	705/40
5,845,267	12/1998	Ronen	705/40

FOREIGN PATENT DOCUMENTS

WO90/11661	10/1990	WIPO	H04M 11/08
WO96/38018	11/1996	WIPO	H04Q 11/04
WO97/01920	1/1997	WIPO	H04M 15/00

WO97/03410 1/1997 WIPO G06F 17/60

OTHER PUBLICATIONS

International Search Report re PCT/FI97/00082 Date of Mailing of search report: Jul. 8, 1997.

Primary Examiner—Curtis A. Kuntz

Assistant Examiner—Binh K. Tieu

Attorney, Agent, or Firm—Burns, Doane, Swecker & Mathis, L.L.P.

[57] ABSTRACT

A terminal (1, 2) connected to the public telephone network PSTN has access to the Internet-connecting node by dialling a service number. In the access node the server gives the terminal a temporary IP-address and sets up the connection to the area network (15) or to the worldwide Internet (11) offering chargeable services. In order to bind the A-number and the IP-address to each other and thus bill the user for the chargeable services the procedure is as follows: when setting up the connection to the service number, the telephone exchange (4), containing the intelligent network switching functions, informs the intelligent network Service Control Point (SCP) (14) of both the user's (1 or 2) A-number and the device location identification (C) of the telephone exchange (4) from which the connection has been setup to the router (6) entry point in the access node. The entry point is given the same identification (C) as the device location connected to the point, and a message is sent to SCP containing the temporary address given to the terminal for the connection time as well as the router (6) entry point identification. In SCP the billing program binds to each other the A-number and the terminal's temporary IP-address having the same device location identification and router entry point identification. The intelligent network database has the data of the providers of chargeable services, which data include at least their IP-addresses. When the terminal is connected to the chargeable service, the local area net server informs the IP-address of the service and the IP-address of the terminal to the Service Control Point (SCP).

11 Claims, 4 Drawing Sheets

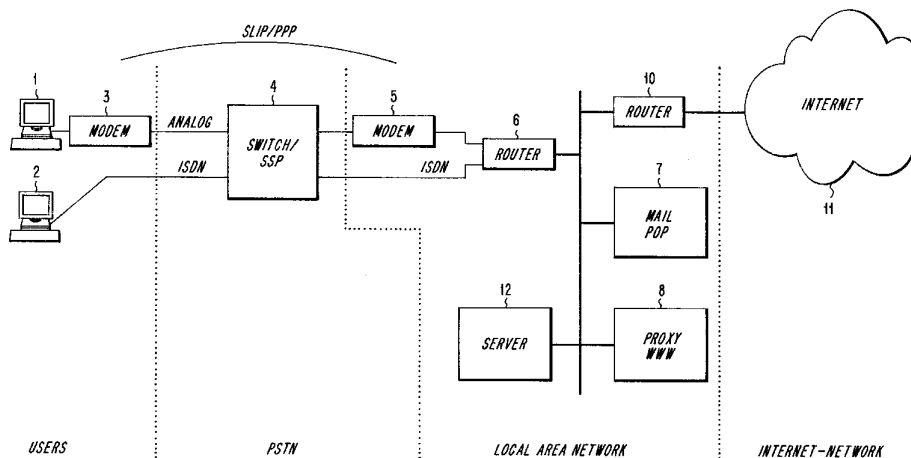


FIG. 1

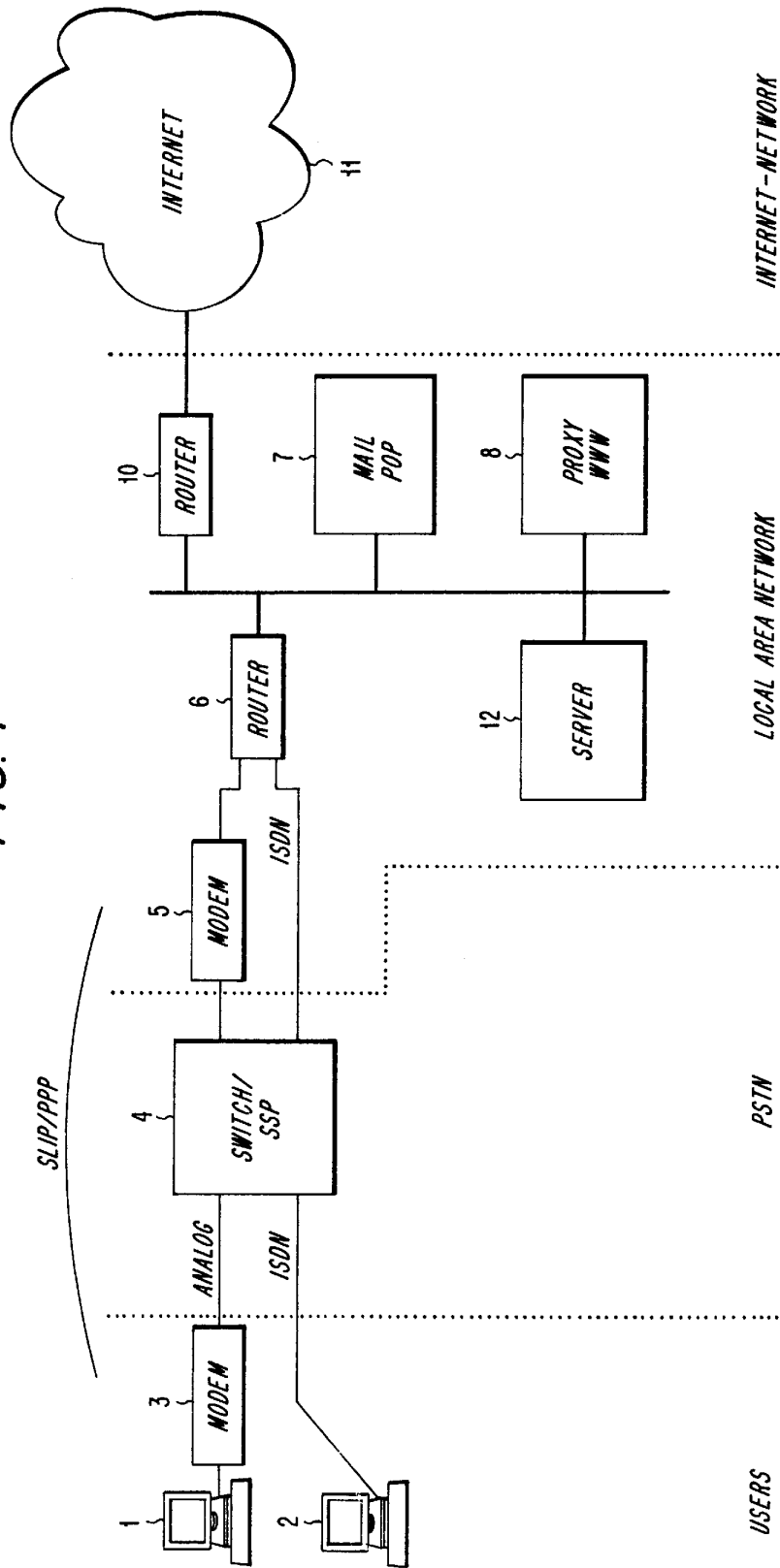
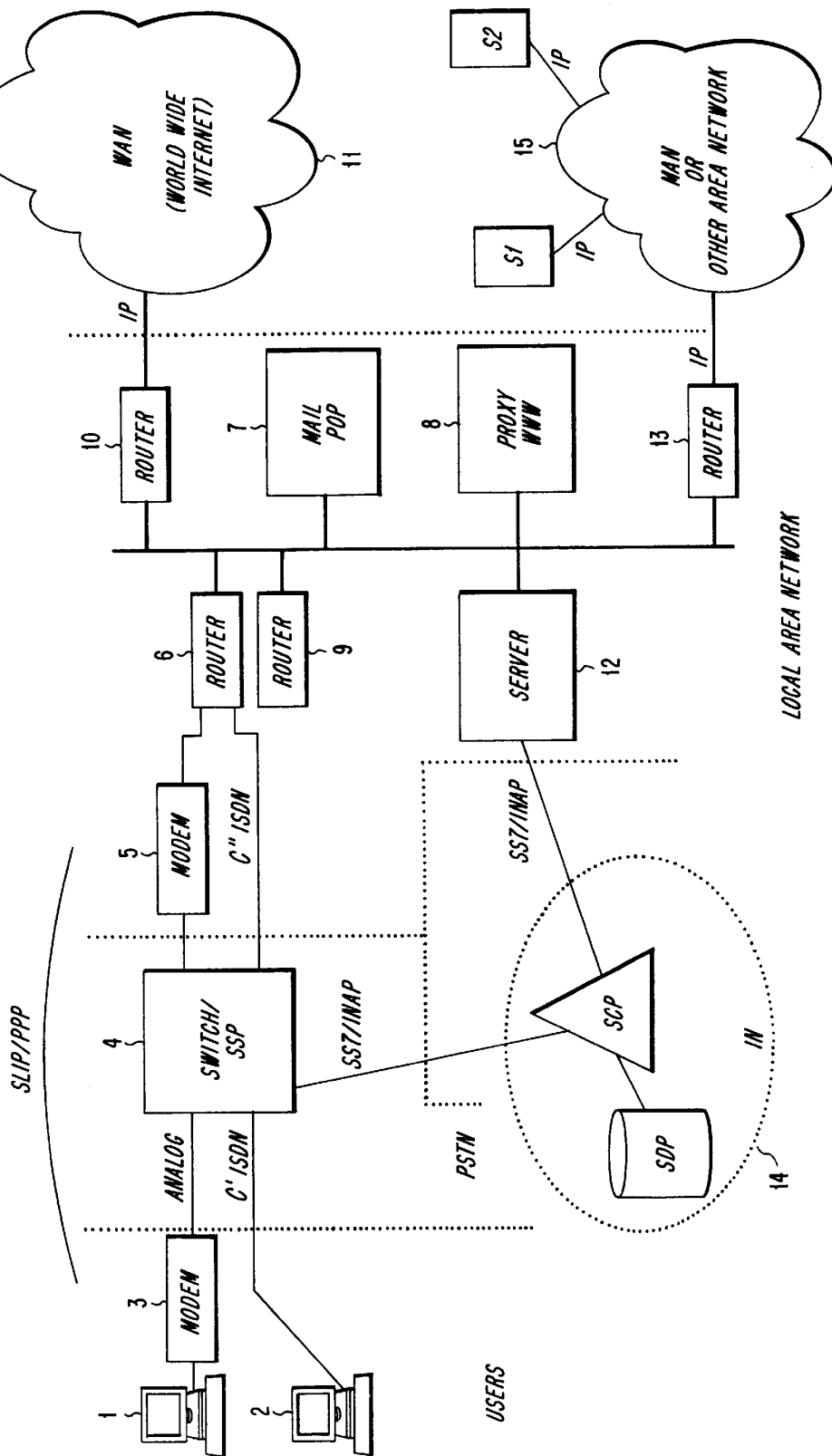


FIG. 2



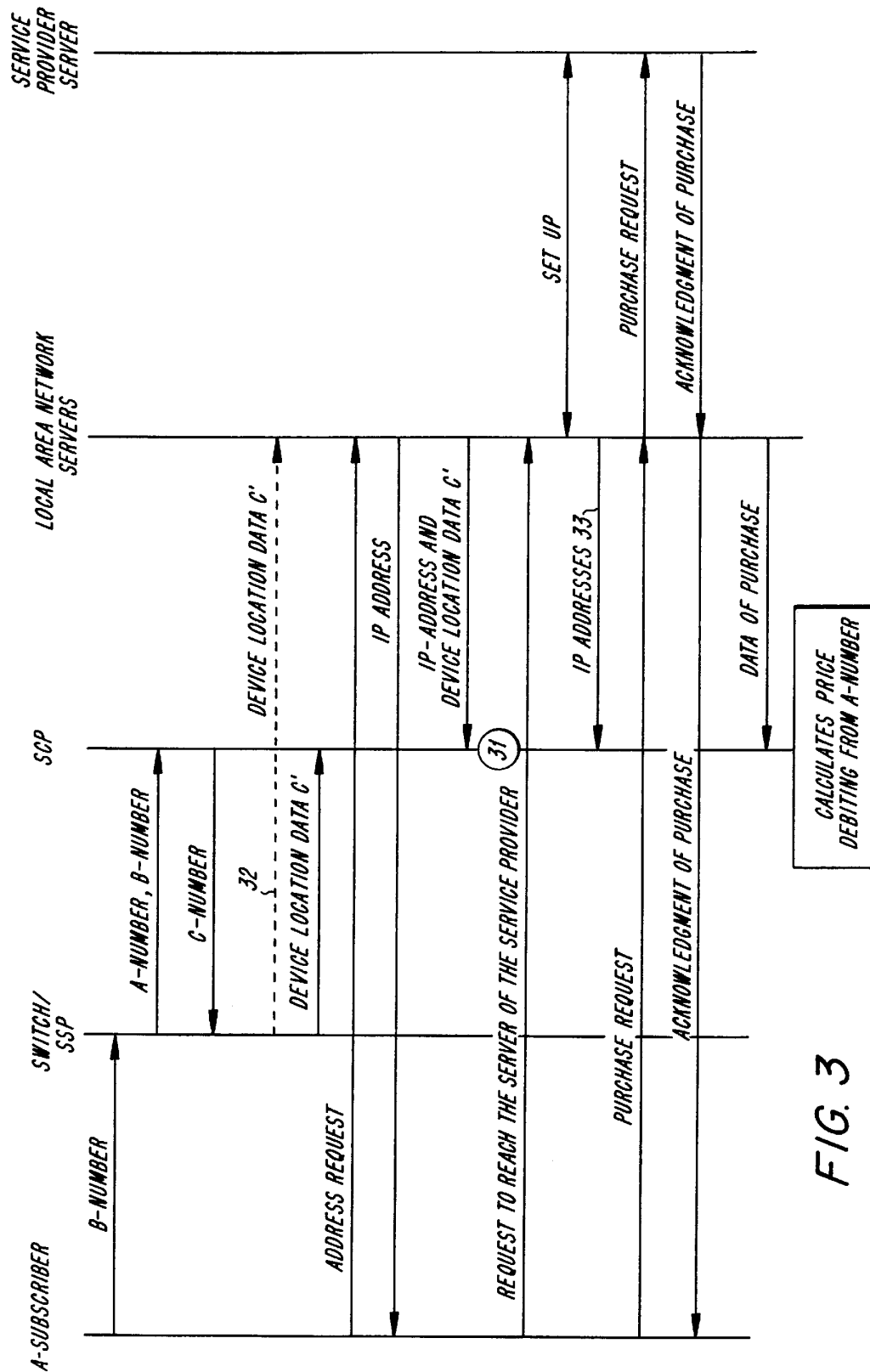
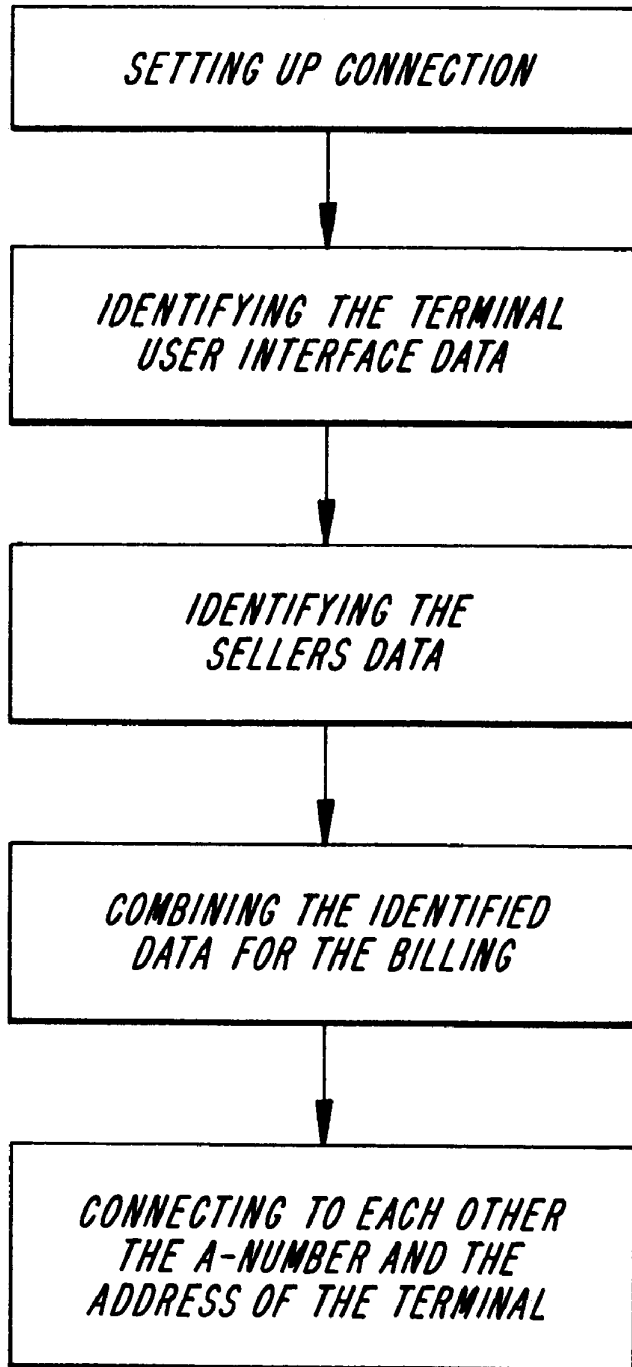


FIG. 3

FIG. 4

Explore Litigation Insights

Docket Alarm provides insights to develop a more informed litigation strategy and the peace of mind of knowing you're on top of things.

Real-Time Litigation Alerts



Keep your litigation team up-to-date with **real-time alerts** and advanced team management tools built for the enterprise, all while greatly reducing PACER spend.

Our comprehensive service means we can handle Federal, State, and Administrative courts across the country.

Advanced Docket Research



With over 230 million records, Docket Alarm's cloud-native docket research platform finds what other services can't. Coverage includes Federal, State, plus PTAB, TTAB, ITC and NLRB decisions, all in one place.

Identify arguments that have been successful in the past with full text, pinpoint searching. Link to case law cited within any court document via Fastcase.

Analytics At Your Fingertips



Learn what happened the last time a particular judge, opposing counsel or company faced cases similar to yours.

Advanced out-of-the-box PTAB and TTAB analytics are always at your fingertips.

API

Docket Alarm offers a powerful API (application programming interface) to developers that want to integrate case filings into their apps.

LAW FIRMS

Build custom dashboards for your attorneys and clients with live data direct from the court.

Automate many repetitive legal tasks like conflict checks, document management, and marketing.

FINANCIAL INSTITUTIONS

Litigation and bankruptcy checks for companies and debtors.

E-DISCOVERY AND LEGAL VENDORS

Sync your system to PACER to automate legal marketing.