

(12) **United States Patent**  
**Flowerdew et al.**

(10) **Patent No.:** **US 7,211,986 B1**  
(45) **Date of Patent:** **May 1, 2007**

(54) **INDUCTIVE CHARGING SYSTEM**

(75) Inventors: **Peter M. Flowerdew**, Brentry (GB);  
**David Huddart**, Westbury-on-Trym (GB)

(73) Assignee: **Plantronics, Inc.**, Santa Cruz, CA (US)

(\*) Notice: Subject to any disclaimer, the term of this patent is extended or adjusted under 35 U.S.C. 154(b) by 106 days.

5,522,712 A *	6/1996	Winn	417/436
5,563,776 A *	10/1996	Eck	363/26
5,600,225 A	2/1997	Goto	
5,734,254 A *	3/1998	Stephens	320/106
6,134,420 A *	10/2000	Flowerdew et al.	455/41.1
6,549,379 B1 *	4/2003	Kazmierczak et al.	360/264.8
6,774,603 B2 *	8/2004	Liao	320/107
6,798,173 B2 *	9/2004	Hsu	320/134
6,803,744 B1 *	10/2004	Sabo	320/108
2004/0145342 A1 *	7/2004	Lyon	320/108

\* cited by examiner

(21) Appl. No.: **10/882,961**

(22) Filed: **Jul. 1, 2004**

(51) **Int. Cl.**  
**H02J 7/00** (2006.01)

(52) **U.S. Cl.** ..... **320/108**

(58) **Field of Classification Search** ..... 320/107,  
320/108, 110, 112, 113, 114, 115, 116  
See application file for complete search history.

(56) **References Cited**

**U.S. PATENT DOCUMENTS**

3,840,795 A	10/1974	Roszyk et al.	
3,938,018 A *	2/1976	Dahl	320/140
4,873,677 A *	10/1989	Sakamoto et al.	368/204
5,110,793 A *	5/1992	De	320/108
5,396,538 A *	3/1995	Hong	455/573
5,479,486 A *	12/1995	Saji	455/573

*Primary Examiner*—Karl Easthom

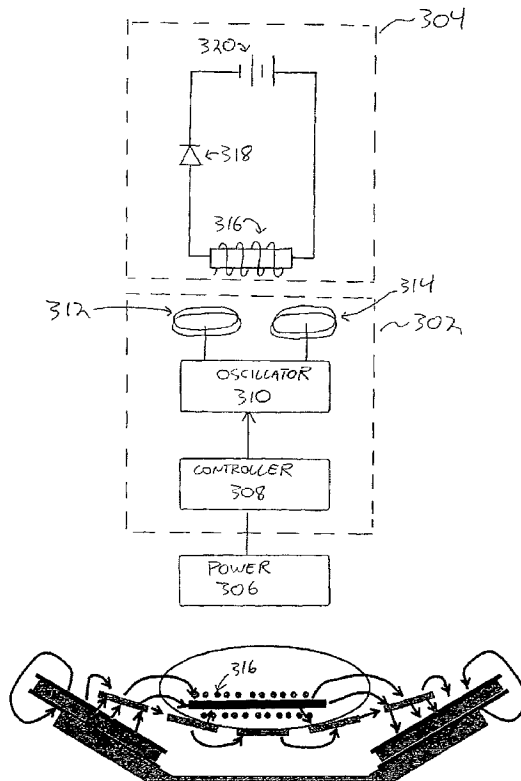
*Assistant Examiner*—Samuel Berhanu

(74) *Attorney, Agent, or Firm*—Thomas Chuang

(57) **ABSTRACT**

An apparatus for inductive charging a battery. The apparatus includes a housing with a lower surface and a charging surface. A rechargeable device with a rechargeable battery may be placed on the charging surface. The apparatus further includes a controller for driving an oscillator, wherein the controller receives power from a power source. A first charger coil and second charger coil are disposed within the housing and are coupled to the oscillator. The first charger coil and second charger coil create a substantially horizontal magnetic field in the volume of space above the charging surface.

**52 Claims, 12 Drawing Sheets**



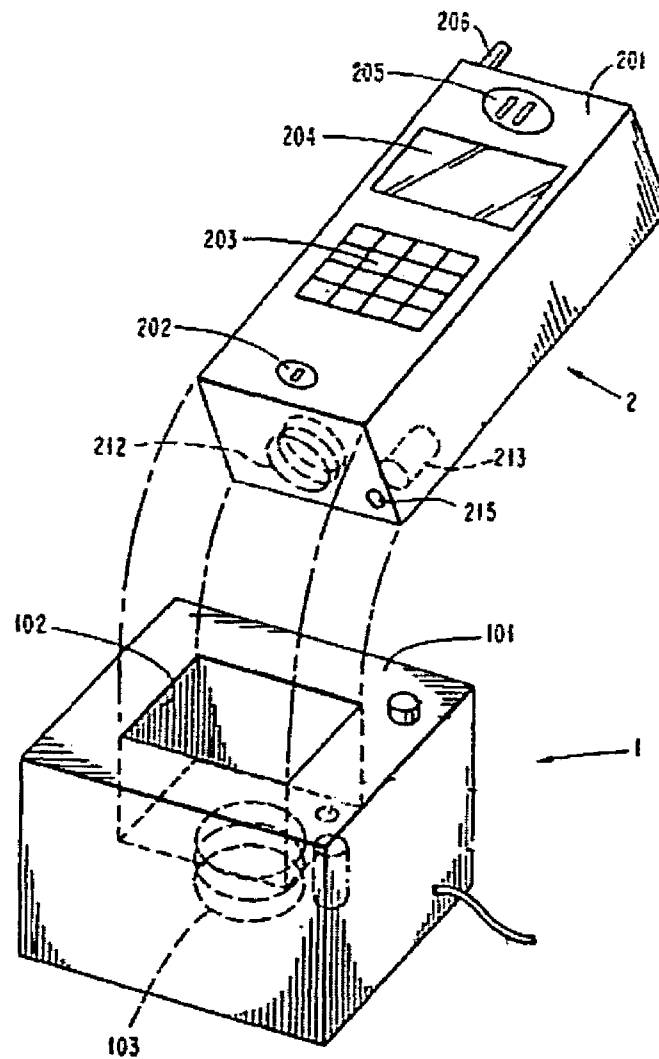


FIGURE 1

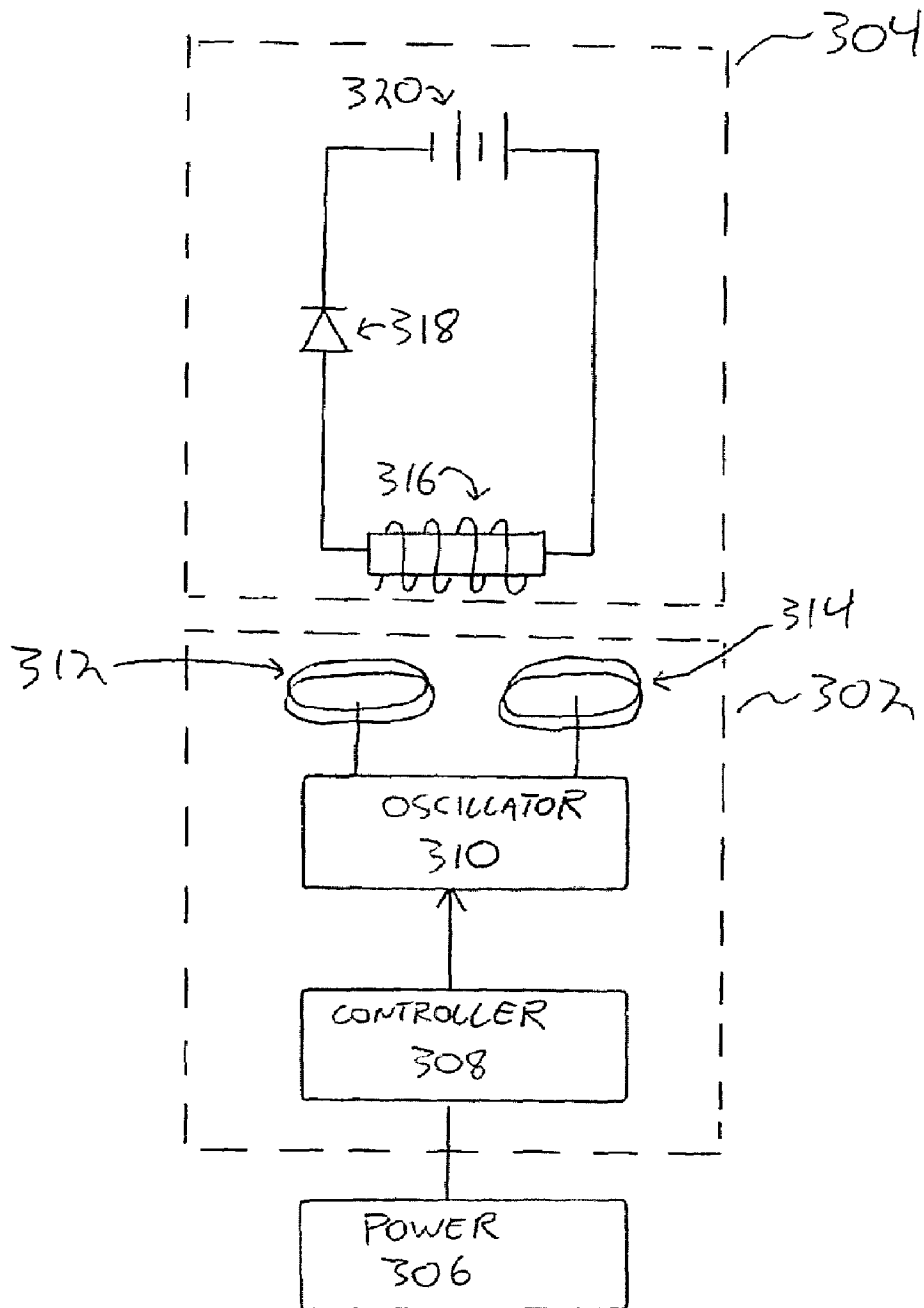


FIGURE 2

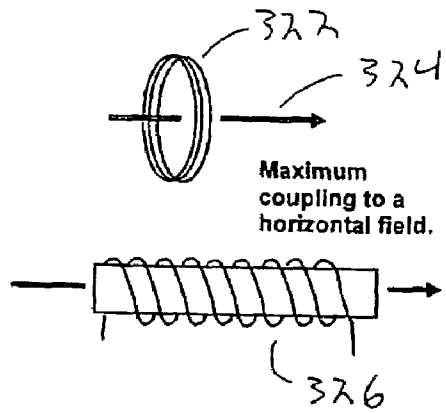


FIGURE 3A

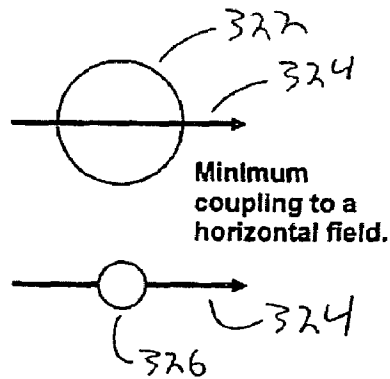


FIGURE 3B

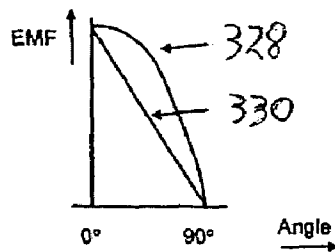


FIGURE 3C

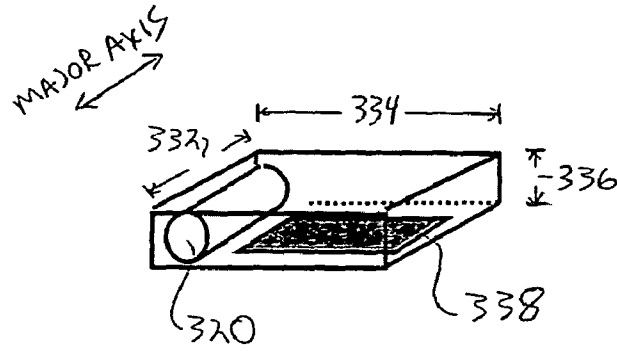


FIGURE 4A

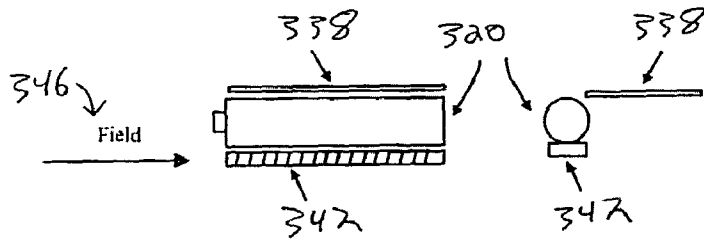


FIGURE 4B

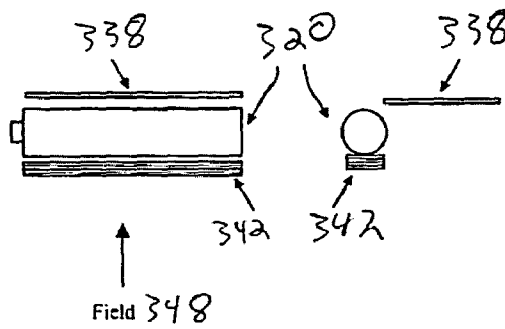


FIGURE 4C

# Explore Litigation Insights

Docket Alarm provides insights to develop a more informed litigation strategy and the peace of mind of knowing you're on top of things.

## Real-Time Litigation Alerts



Keep your litigation team up-to-date with **real-time alerts** and advanced team management tools built for the enterprise, all while greatly reducing PACER spend.

Our comprehensive service means we can handle Federal, State, and Administrative courts across the country.

## Advanced Docket Research



With over 230 million records, Docket Alarm's cloud-native docket research platform finds what other services can't. Coverage includes Federal, State, plus PTAB, TTAB, ITC and NLRB decisions, all in one place.

Identify arguments that have been successful in the past with full text, pinpoint searching. Link to case law cited within any court document via Fastcase.

## Analytics At Your Fingertips



Learn what happened the last time a particular judge, opposing counsel or company faced cases similar to yours.

Advanced out-of-the-box PTAB and TTAB analytics are always at your fingertips.

## API

Docket Alarm offers a powerful API (application programming interface) to developers that want to integrate case filings into their apps.

## LAW FIRMS

Build custom dashboards for your attorneys and clients with live data direct from the court.

Automate many repetitive legal tasks like conflict checks, document management, and marketing.

## FINANCIAL INSTITUTIONS

Litigation and bankruptcy checks for companies and debtors.

## E-DISCOVERY AND LEGAL VENDORS

Sync your system to PACER to automate legal marketing.