



US007012802B2

(12) **United States Patent**
Nakajima et al.

(10) **Patent No.:** US 7,012,802 B2
(45) **Date of Patent:** Mar. 14, 2006

(54) **ELECTRONIC APPARATUS INCLUDING OPTICAL GUIDE THAT GUIDES LIGHT FROM LIGHT-EMITTING DIODE TO OUTSIDE OF HOUSING**

(75) Inventors: **Yuji Nakajima**, Nishitama-gun (JP);
Katsuo Ozawa, Hamura (JP)

(73) Assignee: **Kabushiki Kaisha Toshiba**, Tokyo (JP)

(*) Notice: Subject to any disclaimer, the term of this patent is extended or adjusted under 35 U.S.C. 154(b) by 58 days.

(21) Appl. No.: **10/878,627**

(22) Filed: **Jun. 29, 2004**

(65) **Prior Publication Data**

US 2005/0018396 A1 Jan. 27, 2005

(30) **Foreign Application Priority Data**

Jun. 30, 2003 (JP) 2003-187030

(51) **Int. Cl.**
G06F 1/16 (2006.01)

(52) **U.S. Cl.** 361/683

(58) **Field of Classification Search** 361/683
See application file for complete search history.

(56) **References Cited**

U.S. PATENT DOCUMENTS

5,691,880 A *	11/1997	Seto et al.	361/683
5,808,861 A	9/1998	Nakajima et al.	
6,876,546 B1 *	4/2005	Tsao	361/683
2004/0228103 A1	11/2004	Hsu	

FOREIGN PATENT DOCUMENTS

JP	8-6670	1/1996
JP	3382073	12/2002
TW	547774	8/2003

OTHER PUBLICATIONS

Taiwanese Office Action dated May 24, 2005 for Appl. No. 93117989.

* cited by examiner

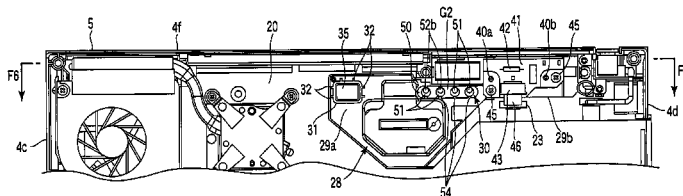
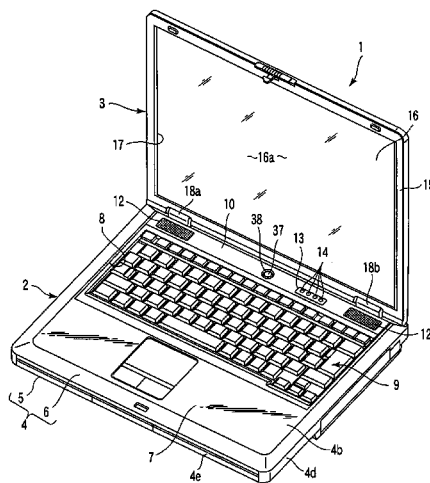
Primary Examiner—Lisa Lea-Edmonds

(74) *Attorney, Agent, or Firm*—Pillsbury Winthrop Shaw Pittman, LLP

(57) **ABSTRACT**

An electronic apparatus that includes a housing, a holder provided in the housing and a light-emitting portion provided in the housing. The holder is made of a resin and supports components. The holder includes an optical guide that guides light emitted from the light-emitting portion to outside of the housing, and the optical guide is formed integral with the holder.

20 Claims, 6 Drawing Sheets



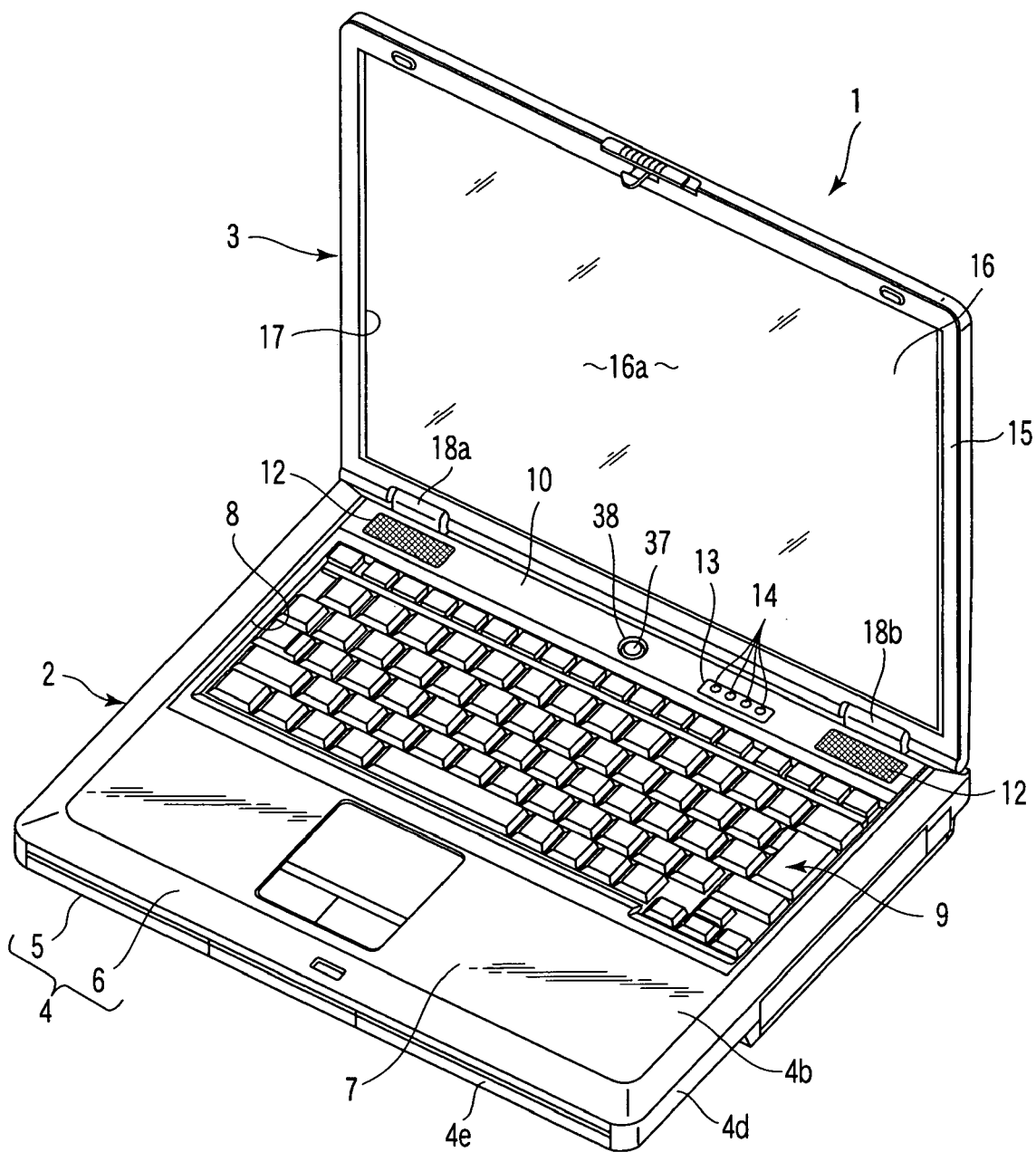


FIG. 1

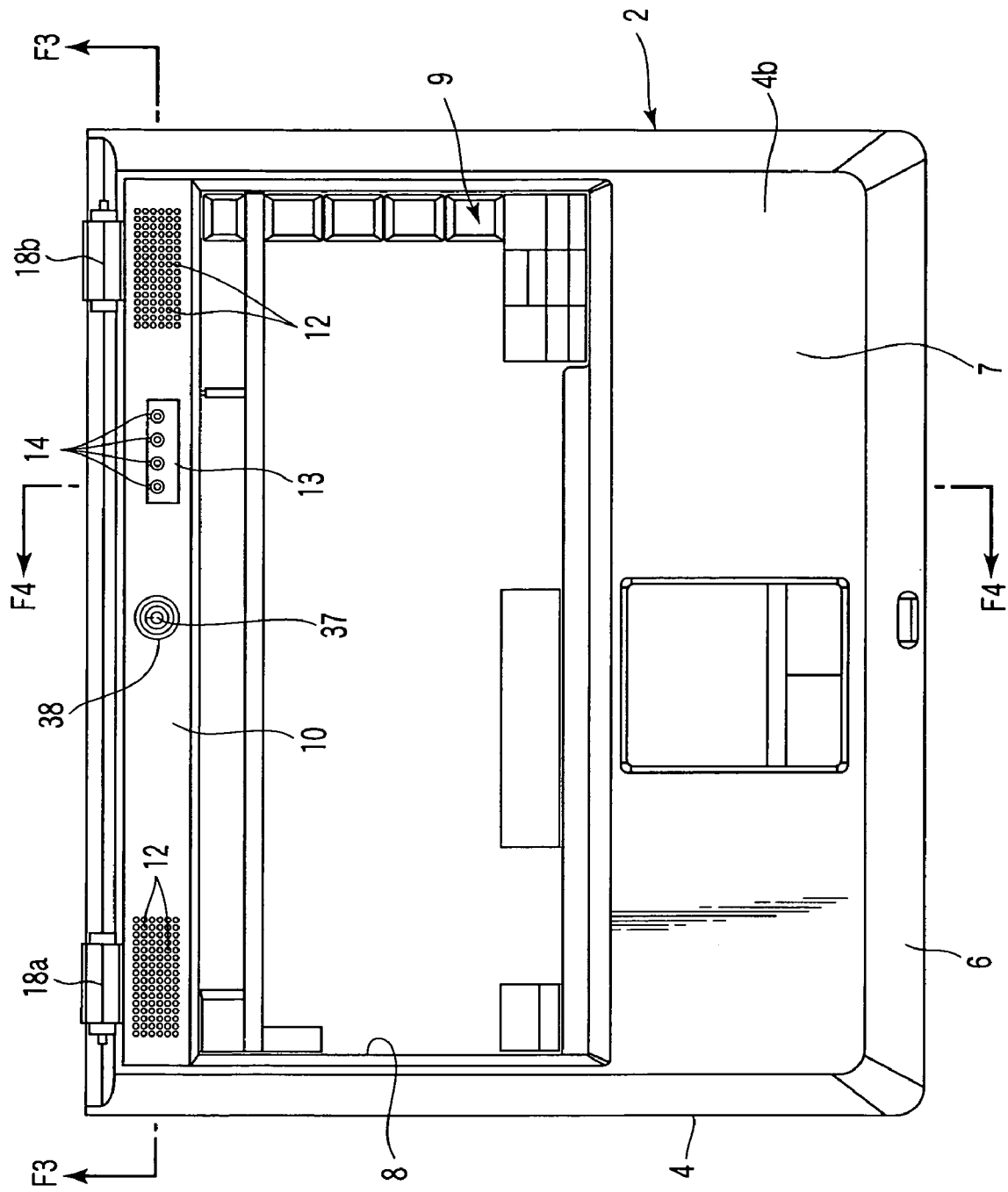


FIG. 2

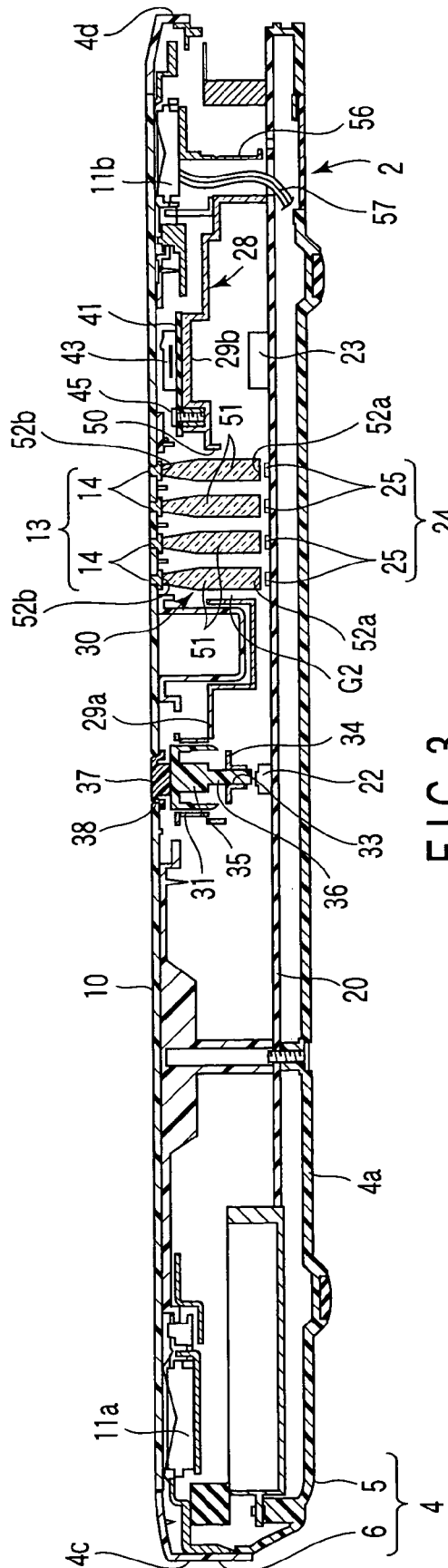


FIG. 3

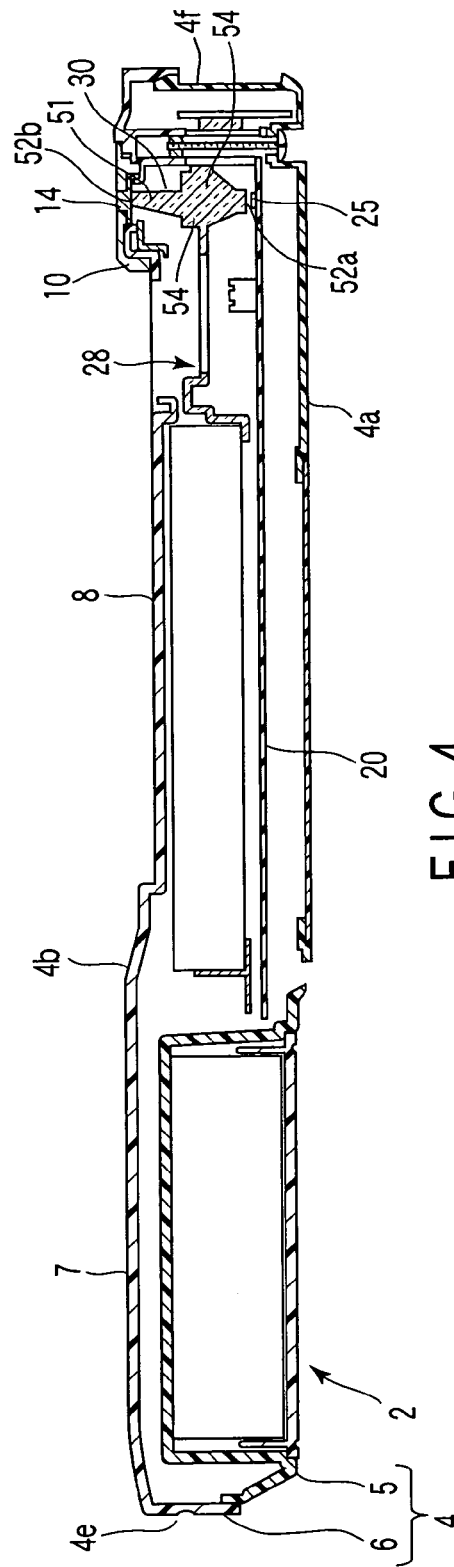


FIG. 4

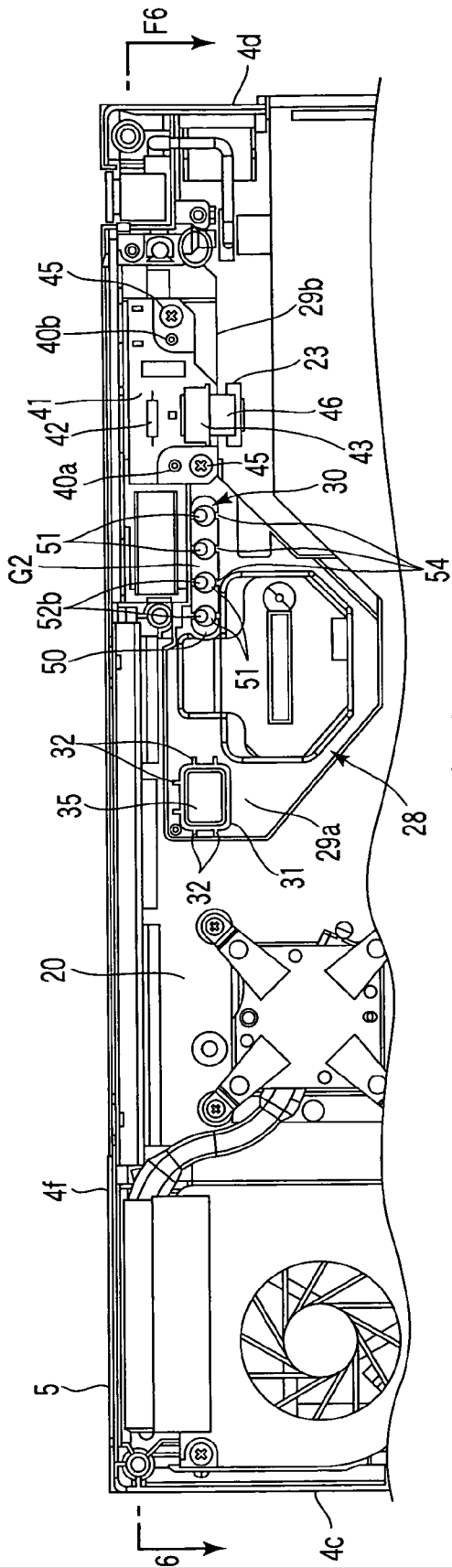


FIG. 5

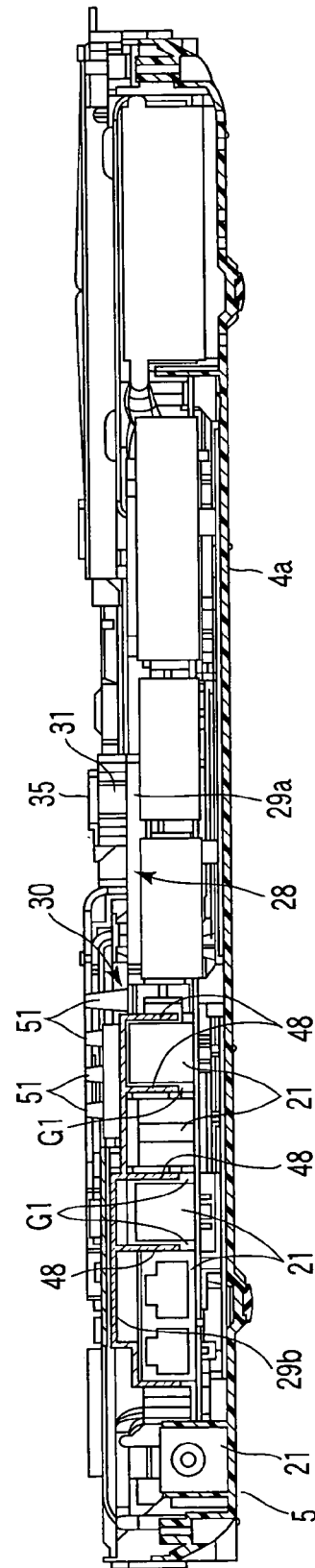


FIG. 6

Explore Litigation Insights

Docket Alarm provides insights to develop a more informed litigation strategy and the peace of mind of knowing you're on top of things.

Real-Time Litigation Alerts



Keep your litigation team up-to-date with **real-time alerts** and advanced team management tools built for the enterprise, all while greatly reducing PACER spend.

Our comprehensive service means we can handle Federal, State, and Administrative courts across the country.

Advanced Docket Research



With over 230 million records, Docket Alarm's cloud-native docket research platform finds what other services can't. Coverage includes Federal, State, plus PTAB, TTAB, ITC and NLRB decisions, all in one place.

Identify arguments that have been successful in the past with full text, pinpoint searching. Link to case law cited within any court document via Fastcase.

Analytics At Your Fingertips



Learn what happened the last time a particular judge, opposing counsel or company faced cases similar to yours.

Advanced out-of-the-box PTAB and TTAB analytics are always at your fingertips.

API

Docket Alarm offers a powerful API (application programming interface) to developers that want to integrate case filings into their apps.

LAW FIRMS

Build custom dashboards for your attorneys and clients with live data direct from the court.

Automate many repetitive legal tasks like conflict checks, document management, and marketing.

FINANCIAL INSTITUTIONS

Litigation and bankruptcy checks for companies and debtors.

E-DISCOVERY AND LEGAL VENDORS

Sync your system to PACER to automate legal marketing.