



[54] **ACCESSORY IDENTIFICATION APPARATUS AND METHOD**

[75] Inventor: **David J. Theobald**, Woodstock, Ill.

[73] Assignee: **Motorola, Inc.**, Schaumburg, Ill.

[21] Appl. No.: **895,391**

[22] Filed: **Jul. 16, 1997**

[51] **Int. Cl.⁶** **H01M 10/46**

[52] **U.S. Cl.** **320/106**

[58] **Field of Search** 320/106, 110, 320/132, DIG. 12, DIG. 21, 105, 114, 147

[56] **References Cited**

U.S. PATENT DOCUMENTS

5,164,652	11/1992	Johnson et al.	320/2
5,184,059	2/1993	Patino et al.	320/15
5,313,661	5/1994	Malmi et al. .	
5,460,901	10/1995	Syrjälä	429/90
5,489,834	2/1996	Pitkanen	320/15
5,546,317	8/1996	Andrieu	364/481

FOREIGN PATENT DOCUMENTS

2 239 567 7/1991 United Kingdom .

OTHER PUBLICATIONS

Motorola Product List Web Page, Motorola Original Adapters, Personal Cellular Phone Adapters, p. 1, 1997.

Motorola Product List Web Page, Motorola Original Hands Free Systems, Personal Cellular Phone Hands Free Solutions, p. 1, 1997.

Motorola Product List Web Page, Motorola Original Chargers, Personal Cellular Phone Chargers, pp. 1 & 2, 1997.

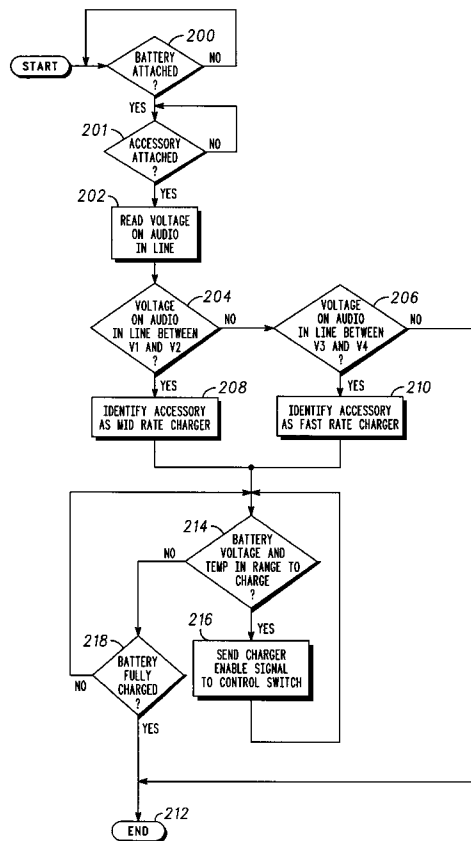
Primary Examiner—Edward H. Tso

Attorney, Agent, or Firm—Mark D. Patrick

[57] **ABSTRACT**

An accessory identification apparatus (195) used in an electronic device (102) includes a connector (122) to couple to an accessory (104) and a controller (108) coupled to the connector (122). The connector (122) includes an information pin (124) to receive information generated from operation of the accessory (104). The controller (108) identifies the accessory (104) from a voltage level generated by attachment of the accessory (104) to the information pin (124). Also, an accessory identification apparatus (195) used in an accessory (104) includes a connector (173) to couple to an electronic device (102) and an identification element (174) coupled to the connector (173). The connector (173) includes an information pin (179) to supply information generated from operation of the accessory (104). The identification element (174), upon attachment of the connector (173) to the electronic device (102), provides an identity of the accessory (104) via the information pin (179).

6 Claims, 2 Drawing Sheets



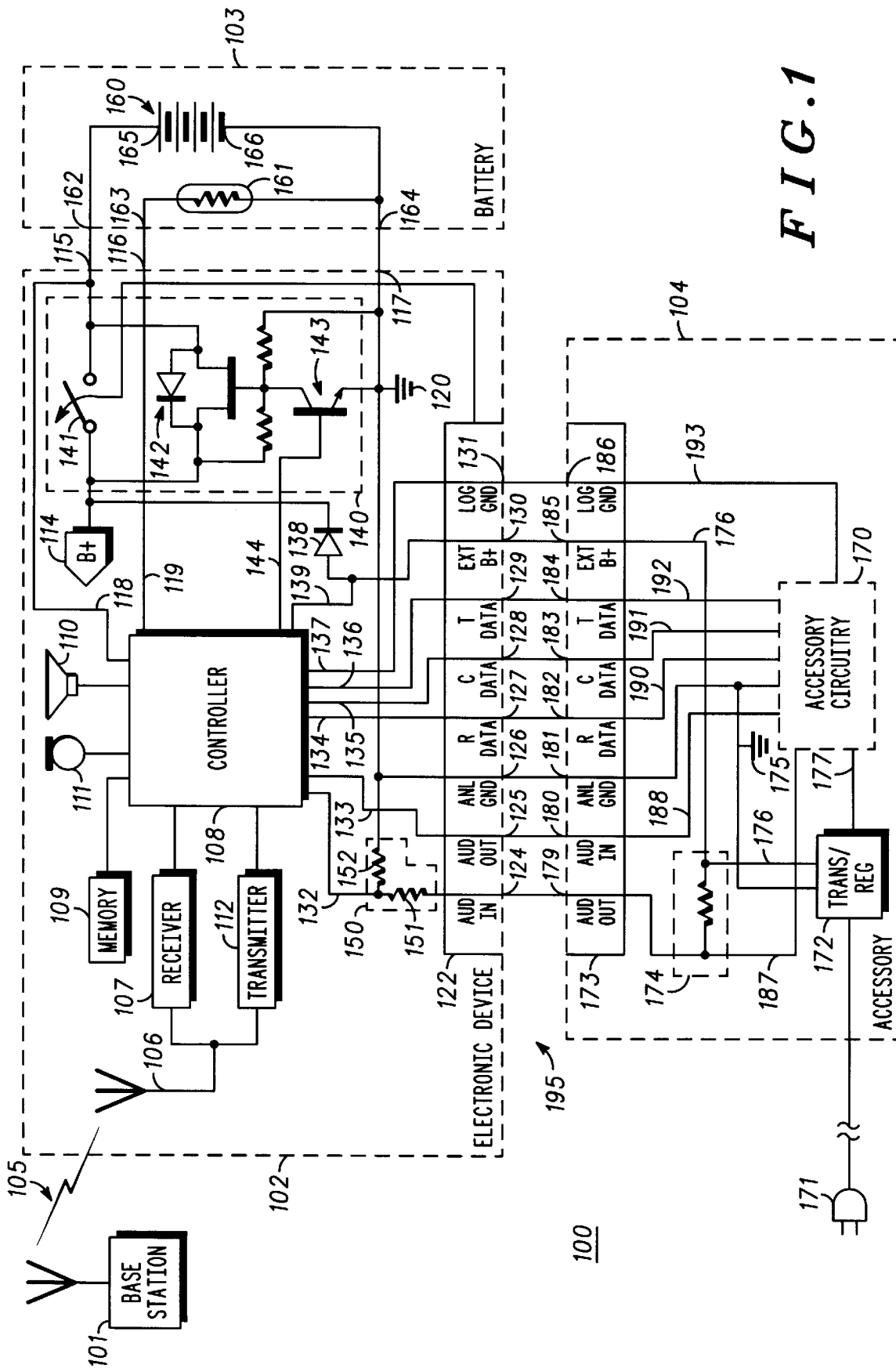
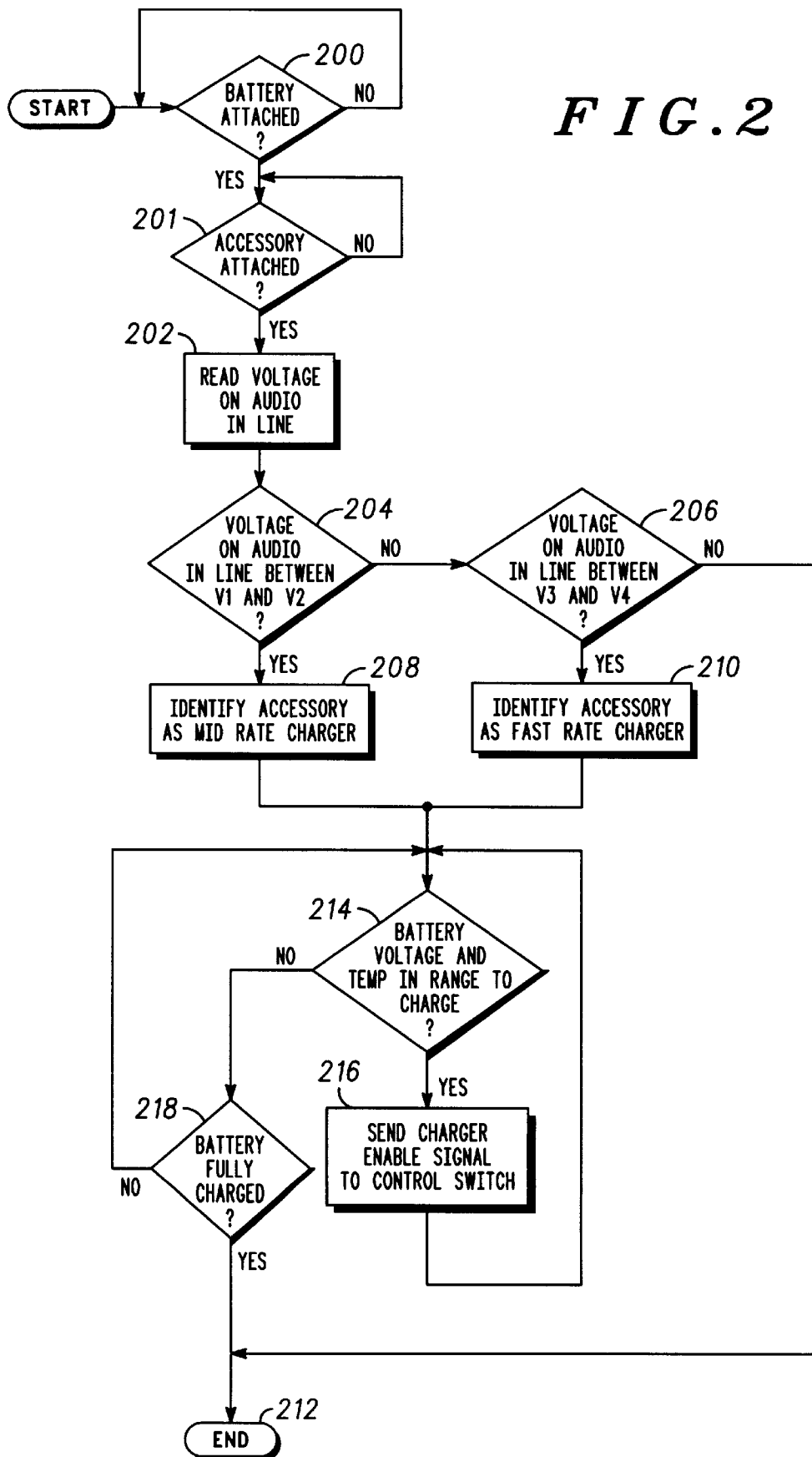


FIG. 1



ACCESSORY IDENTIFICATION APPARATUS AND METHOD

FIELD OF THE INVENTION

This invention relates generally to electronic devices and accessories therefor and, more particularly, to an apparatus and method used to identify an accessory to an electronic device.

BACKGROUND OF THE INVENTION

Electronic devices, such as cellular telephones, have become increasingly popular. Those devices that are compatible with a large number of accessories have a commercial advantage. Accessories are used in association with the device to increase the functionality thereof. Accessories are attached to the device via an accessory connector thereof. One such accessory connector is the standardized eight pin J3-type accessory connector used in MicroTAC™ cellular telephones manufactured and sold by Motorola, Inc. from 1989 to the present. The J3-type accessory connector has an external power supply pin; an audio in pin; an audio out pin; data pins for high speed data communications according to the three-wire bus protocol used in radiotelephone products by Motorola, Inc.; and two ground pins in a predetermined arrangement.

To be compatible with the J3-type accessory connector, an accessory must have a connector that is designed to mate with the accessory connector and have the same number and arrangement of pins. To communicate its identity to the device, the accessory includes a logic circuit or microcontroller capable of driving high speed data communications on the data pins according to the three-wire bus protocol. Unfortunately, such logic circuits or microcontrollers are expensive and oftentimes double the cost of the accessory. Therefore, what is needed is a low cost apparatus and method of identifying an accessory to a device that maintains backward compatibility with existing accessories that use the accessory connector.

BRIEF DESCRIPTION OF THE DRAWINGS

FIG. 1 illustrates, in partial block and partial schematical diagram form, an accessory identification system including an electronic device having an accessory identification apparatus, a battery, and an accessory; and

FIG. 2 illustrates, in flow chart form, an accessory identification method implemented by the electronic device of FIG. 1.

DETAILED DESCRIPTION OF THE PREFERRED EMBODIMENTS

An accessory identification apparatus used in an electronic device includes a connector to couple to an accessory and a controller coupled to the connector. The connector includes an information pin to receive information generated from operation of the accessory. The controller identifies the accessory from a voltage level generated by attachment of the accessory to the information pin. In addition, an accessory identification apparatus used in an accessory includes a connector to couple to an electronic device and an identification element coupled to the connector. The connector includes an information pin to supply information generated from operation of the accessory. The identification element, upon attachment of the connector to the electronic device, provides an identity of the accessory via the information pin. By using the information pin to provide a voltage level and

to receive information generated from operation of the accessory, a low cost and backwards compatible accessory identification system is realized.

FIG. 1 illustrates an accessory identification system **100**. The accessory identification system **100** includes an electronic device **102**, a battery **103**, and an accessory **104**. The electronic device **102** communicates with a base station **101**, which provides wireless communications and features, such as paging, telephone, and short messaging, or the like, to the electronic device **102** when it is located within a geographic area served by the base station **101**. The base station **101** and the electronic device **102** communicate with each other via a communication link, which is preferably radio frequency (RF) signals **105**. In the illustrated embodiment, the electronic device **102** is a cellular telephone and the base station **101** is a cellular telephone service provider.

The electronic device **102** includes an antenna **106**, a receiver **107**, a controller **108**, a memory **109**, a speaker **110**, a microphone **111**, and a transmitter **112**. The controller **108** includes a microprocessor, such as a 68HC11 microprocessor commercially available from Motorola, Inc., known synthesizer circuitry, and known audio logic circuitry. The controller **108** controls the operation of the electronic device **102** according to instructions read from the memory **109**. The antenna **106** detects and emits the RF signals **105**. The receiver **107** operates under control of the controller **108** to convert signals received by the antenna **106** into data signals input to the controller **108** for use thereby and into voice signals input to the controller **108** for output by the speaker **110** as audible speech. The transmitter **112** operates under control of the controller **108** to convert signals, which include data signals generated by the controller **108** and voice signals generated by the controller **108** from audible speech input via the microphone **111**, for emission by the antenna **106**.

The electronic device **102** has a supply terminal (B+) **114**, battery terminals **115**, **116**, and **117**, a connector **122**, and a switch circuit **140**. The supply terminal **114** supplies power to electrical circuitry of the electronic device **102**, including but not limited to, the receiver **107**, the controller **108**, and transmitter **112** via electrical connections (not shown). The battery terminals **115–117** are for electrically connecting to the battery **103**. Battery terminals **115** and **116** are monitored by the controller **108** via lines **118** and **119**. Battery terminal **117** is coupled to an analog ground **120** of the electronic device **102**.

The connector **122** is for physically and electrically connecting to the accessory **104**. The connector **122** has multiple pins including information pins **124**, **125**, **127**, **128**, and **129** designated AUD IN, AUD OUT, and R, C, and T DATA, respectively; ground pins **126** and **131** designated ANL GND and LOG GND; and an external power supply pin **130** designated EXT B+. The information pin **124** is coupled to the controller **108** via audio in line **132** and an identification network **150**. The identification network **150** is employed to identify the accessory **104**. In the illustrated embodiment, the identification network **150** includes a resistor **151**, having a value of 15 k Ω , coupled in series with the information pin **124** and the audio in line **132** and a resistor **152**, having a value of 15 k Ω , coupled to the audio in line **132** and the analog ground **120** in a shunt configuration, which give the identification network **150** an impedance of approximately 30 k Ω looking in from the information pin **124**. The information pin **125** is coupled to the controller **108** via audio out line **133**. The information pins **127–129** are coupled to the controller **108** via data lines **134–136**. The ground pins **126** and **131** are coupled to the analog ground

120 and to a logic ground of the controller 108 via line 137, respectively. The external power supply pin 130 is coupled to the supply terminal 114 via a diode 138. The external power supply pin 130 is monitored by the controller 108 via line 139. The connector 122 is preferably the standardized eight pin J3-type accessory connector employed by Micro-TAC™ cellular telephones manufactured and sold by Motorola, Inc. from 1989 to the present, but may be any other suitable multiple pin accessory connector having an external power supply pin and at least one information pin.

The switch circuit 140 selectively connects the battery terminal 115 to the supply terminal 114. The switch circuit 140 includes a mechanical switch 141, a transistor switch 142, and a control switch 143. The mechanical switch 141 is coupled to the connector 122, the supply terminal 114, and the battery terminal 115. The mechanical switch 141 electrically connects the supply and battery terminals 114 and 115 when the connector 122 is unattached and opens to electrically disconnect the supply and battery terminals 114 and 115 when the accessory 104 is physically attached to the connector 122.

The transistor switch 142 is coupled in parallel with the mechanical switch 141 to prevent interruption of power to the electronic device 102 when the mechanical switch 141 is opened or closed. The transistor switch 142 provides a conduction path between the supply and battery terminals 114 and 115 until a voltage level at the supply terminal 114 meets or exceeds a voltage level at the battery terminal 115 causing the transistor switch 142 to turn off. The transistor switch 142 is preferably a MOSFET (metal-oxide semiconductor field effect transistor) having gate and drain terminals coupled to the supply terminal 114, a source terminal coupled to battery terminal 115, and an intrinsic diode coupled across the source and drain terminals. One skilled in the art will recognize that the mechanical switch 141 in the aforementioned arrangement is redundant and the desired switching of the supply and battery terminals 114 and 115 can be accomplished using only the transistor switch 142.

The control switch 143 is coupled to the transistor switch 142 and the controller 108 via line 144 to selectively control the transistor switch 142. In response to an enable signal on line 144, the control switch 143 turns on and pulls the gate of the transistor switch 142 low, which in turn forces the transistor switch 142 to turn on and provide a current conduction path between the supply and battery terminals 114 and 115. The control switch 143 is preferably a BJT (bipolar junction transistor) having a collector terminal coupled to the gate of the transistor switch 142, a base coupled to the controller 108 via line 144, and an emitter coupled to the analog ground 120.

Although electronic device 102 is illustrated as a cellular telephone, the present invention will also find application in radios, portable computers, cordless telephones, two-way radios, pagers, personal digital assistants, tape recorders, and the like, and "electronic device" as used herein shall refer to all such battery powered electronic devices and their equivalents.

The battery 103 includes an electrochemical cell 160, a thermistor 161, and contacts 162–164. The electrochemical cell 160 includes a positive polarity terminal 165 coupled to contact 162 and a negative polarity terminal 166 coupled to contact 164. The electrochemical cell 160 is preferably rechargeable, and can be, for example, any one of the following chemical types: Nickel-Cadmium (NiCd), Nickel-Metal Hydride (NiMH), Alkaline, or Lithium Ion. In the illustrated embodiment, the electrochemical cell 160 sup-

plies a battery voltage supply, preferably of 6 V DC (direct current), at the positive polarity terminal 165. The thermistor 161 is coupled to the contacts 163 and 164. A voltage level across the thermistor 161 forms a temperature signal corresponding to the temperature of the electrochemical cell 160.

The accessory 104 has a plug 171, a transformer and regulator 172, a connector 173, and an identification element 174. The accessory 104 can be a modem, a hands-free adapter, a battery saver, or the like, and includes accessory circuitry 170. The accessory circuitry 170 can include a microprocessor or microcontroller requiring a logic ground; and data or audio input/output devices such as a keypad, a microphone, or a speaker requiring a connection to an analog ground 175 of the accessory 104. However, in the illustrated embodiment, the accessory 104 is a mid rate charger or fast rate charger that does not include the accessory circuitry 170 and, thus, is low cost.

The plug 171 is compatible to mate with a conventional wall outlet (not shown) and provide external power (e.g., 110 V AC (alternating current) supply) to the accessory 104 from the outlet. Alternatively, the plug 171 could be compatible to mate with a cigarette lighter port to provide power to the accessory 104 from an automobile electrical system, or with another suitable power supply.

The transformer and regulator 172 is coupled to the plug 171 and has conventional circuitry. The transformer and regulator 172 provides an external power supply to connector 173 via line 176. In the illustrated embodiment, the external power supply is a current limited constant voltage supply supplying an 8.6 V DC output voltage for both the mid and fast rate chargers, a 340 mA current for the mid rate charger, and a 850 mA current for the fast rate charger. The transformer and regulator 172 preferably includes a tracking circuit that adjusts output power according to feedback received on line 176. In the event that the accessory 104 has the accessory circuitry 170, the transformer and regulator 172 outputs regulated power on line 177 to power the accessory circuitry 170. The transformer and regulator 172 is coupled to the analog ground 175.

The connector 173 is for physically and electrically connecting to the connector 122 of the electronic device 102. The connector 173 has multiple pins including information pins 179, 180, 182, 183, and 184 designated AUD OUT, AUD IN, and R, C, and T DATA, respectively; ground pins 181 and 186 designated ANL GND and LOG GND; and an external power supply pin 185 designated EXT B+. The information pins 179 and 180 are coupled to an audio out line 187 and an audio in line 188, respectively. The information pins 181–183 are coupled to data lines 190–192. The ground pins 181 and 186 are coupled to the analog ground 175 and logic ground line 193, respectively. The external power supply pin 185 is coupled to the transformer and regulator 172 via line 176.

The identification element 174 is employed to identify the accessory 104 to the electronic device 102. The identification element 174 has two ends, one end coupled to line 176 and the other end coupled to the audio out line 187. The identification element 174 is uniquely valued in each different type of the accessory 104. In other words, the identification element 174 is selected to have a different electrical value for each different type of the accessory 104. For example, in the illustrated embodiment, the identification element 174 employed in the mid rate charger accessory is a 120 kΩ resistor, and the identification element 174 employed in the fast rate charger accessory is a 36 kΩ resistor.

Explore Litigation Insights

Docket Alarm provides insights to develop a more informed litigation strategy and the peace of mind of knowing you're on top of things.

Real-Time Litigation Alerts



Keep your litigation team up-to-date with **real-time alerts** and advanced team management tools built for the enterprise, all while greatly reducing PACER spend.

Our comprehensive service means we can handle Federal, State, and Administrative courts across the country.

Advanced Docket Research



With over 230 million records, Docket Alarm's cloud-native docket research platform finds what other services can't. Coverage includes Federal, State, plus PTAB, TTAB, ITC and NLRB decisions, all in one place.

Identify arguments that have been successful in the past with full text, pinpoint searching. Link to case law cited within any court document via Fastcase.

Analytics At Your Fingertips



Learn what happened the last time a particular judge, opposing counsel or company faced cases similar to yours.

Advanced out-of-the-box PTAB and TTAB analytics are always at your fingertips.

API

Docket Alarm offers a powerful API (application programming interface) to developers that want to integrate case filings into their apps.

LAW FIRMS

Build custom dashboards for your attorneys and clients with live data direct from the court.

Automate many repetitive legal tasks like conflict checks, document management, and marketing.

FINANCIAL INSTITUTIONS

Litigation and bankruptcy checks for companies and debtors.

E-DISCOVERY AND LEGAL VENDORS

Sync your system to PACER to automate legal marketing.