



US007239111B2

(12) **United States Patent**  
**Fischer et al.**

(10) **Patent No.:** **US 7,239,111 B2**  
(45) **Date of Patent:** **\*Jul. 3, 2007**

(54) **UNIVERSAL SERIAL BUS ADAPTER FOR A MOBILE DEVICE**

(56) **References Cited**

U.S. PATENT DOCUMENTS

(75) Inventors: **Daniel M. Fischer**, Waterloo (CA);  
**Dan G. Radut**, Waterloo (CA);  
**Michael F. Habicher**, Cambridge (CA);  
**Quang A. Luong**, Kitchener (CA);  
**Jonathan T. Malton**, Kitchener (CA)

3,775,659 A 11/1973 Carlsen, II

(Continued)

FOREIGN PATENT DOCUMENTS

(73) Assignee: **Research in Motion Limited**,  
Waterloo, Ontario (CA)

EP 0684680 A1 11/1995

(Continued)

(\* ) Notice: Subject to any disclaimer, the term of this patent is extended or adjusted under 35 U.S.C. 154(b) by 0 days.

OTHER PUBLICATIONS

Electric Double-Layer Capacitors, vol. 2, Oct. 25, 1996 (Japan, Tokin Corp., Cat. No. EC-200E).

(Continued)

Primary Examiner—Edward H. Tso

(74) Attorney, Agent, or Firm—Conley Rose, P.C.; J. Robert Brown, Jr.

(21) Appl. No.: **11/175,885**

(22) Filed: **Jul. 6, 2005**  
(Under 37 CFR 1.47)

(57) **ABSTRACT**

(65) **Prior Publication Data**  
US 2005/0245138 A1 Nov. 3, 2005

**Related U.S. Application Data**

(63) Continuation of application No. 10/087,629, filed on Mar. 1, 2002, now Pat. No. 6,936,936.  
(60) Provisional application No. 60/273,021, filed on Mar. 1, 2001, provisional application No. 60/330,486, filed on Oct. 23, 2001.

(51) **Int. Cl.**  
**H01M 10/46** (2006.01)

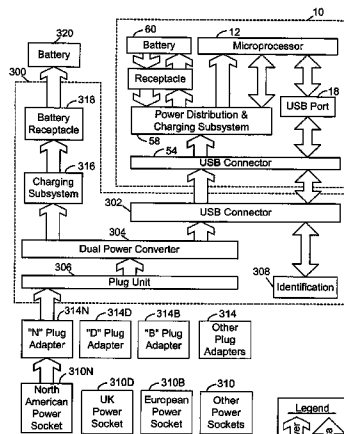
(52) **U.S. Cl.** ..... **320/111**

(58) **Field of Classification Search** ..... 320/111,  
320/138, 114; 307/150, 151

See application file for complete search history.

An adapter for providing a source of power to a mobile device through an industry standard port is provided. In accordance with one aspect of the invention, the adapter comprises a plug unit, a power converter, a primary connector, and an identification subsystem. The plug unit is operative to couple the adapter to a power socket and to receive energy from the power socket. The power converter is electrically coupled to the plug unit and is operable to regulate the received energy from the power socket and to output a power requirement to the mobile device. The primary connector is electrically coupled to the power converter and is operative to couple to the mobile device and to deliver the outputted power requirement to the mobile device. The identification subsystem is electrically coupled to the primary connector and is operative to provide an identification signal.

**18 Claims, 4 Drawing Sheets**



U.S. PATENT DOCUMENTS

4,433,251 A 2/1984 Banks et al.  
4,510,431 A 4/1985 Winkler  
5,173,855 A 12/1992 Nielsen et al.  
5,229,649 A 7/1993 Nielsen et al.  
5,272,475 A 12/1993 Eaton et al.  
5,444,378 A 8/1995 Rogers  
5,631,503 A 5/1997 Cioffi  
5,638,540 A 6/1997 Aldous  
5,651,057 A 7/1997 Blood et al.  
5,769,877 A 6/1998 Barreras, Sr.  
5,850,113 A 12/1998 Weimer et al.  
5,939,860 A 8/1999 William  
6,006,088 A 12/1999 Couse  
6,104,162 A 8/2000 Sainsbury et al.  
6,104,759 A 8/2000 Carkner et al.  
6,130,518 A 10/2000 Gabehart et al.  
6,138,242 A 10/2000 Massman et al.  
6,184,652 B1 2/2001 Yang

6,211,649 B1 4/2001 Matsuda  
6,252,375 B1 6/2001 Richter et al.  
6,255,800 B1 7/2001 Bork  
6,283,789 B1 9/2001 Tsai  
6,668,296 B1 12/2003 Dougherty et al.  
6,738,856 B1 5/2004 Milley et al.  
2001/0003205 A1\* 6/2001 Gilbert ..... 713/320  
2004/0251878 A1\* 12/2004 Veselic ..... 320/141

FOREIGN PATENT DOCUMENTS

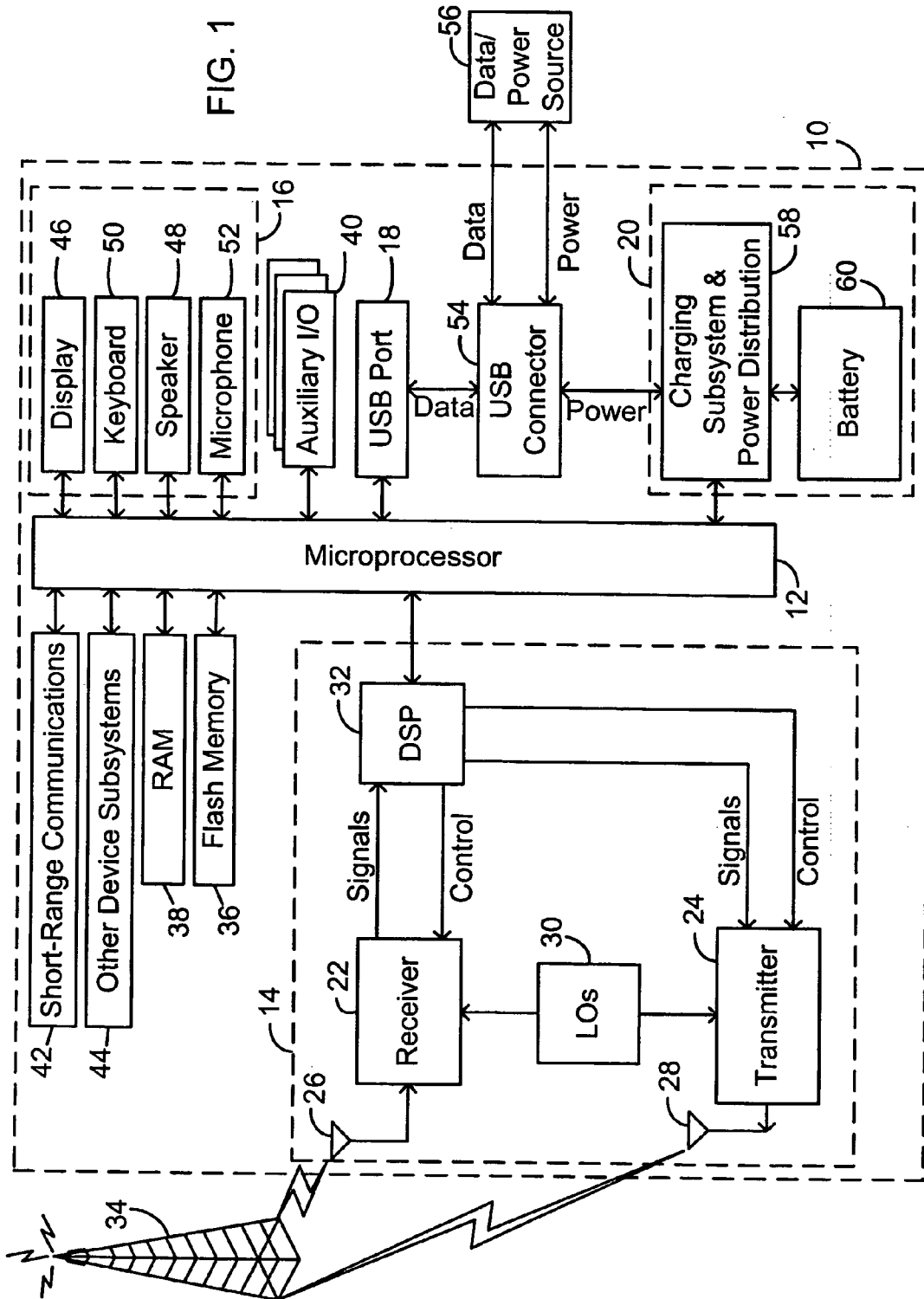
EP 1198049 A1 4/2002  
WO WO 0101330 A1 1/2001

OTHER PUBLICATIONS

Supercapacitor: User's Manual, vol. 2 (Japan, Tokin Corp., date unknown).

Charging Big Supercaps, Portable Design, p. 26, Mar. 1997.

\* cited by examiner



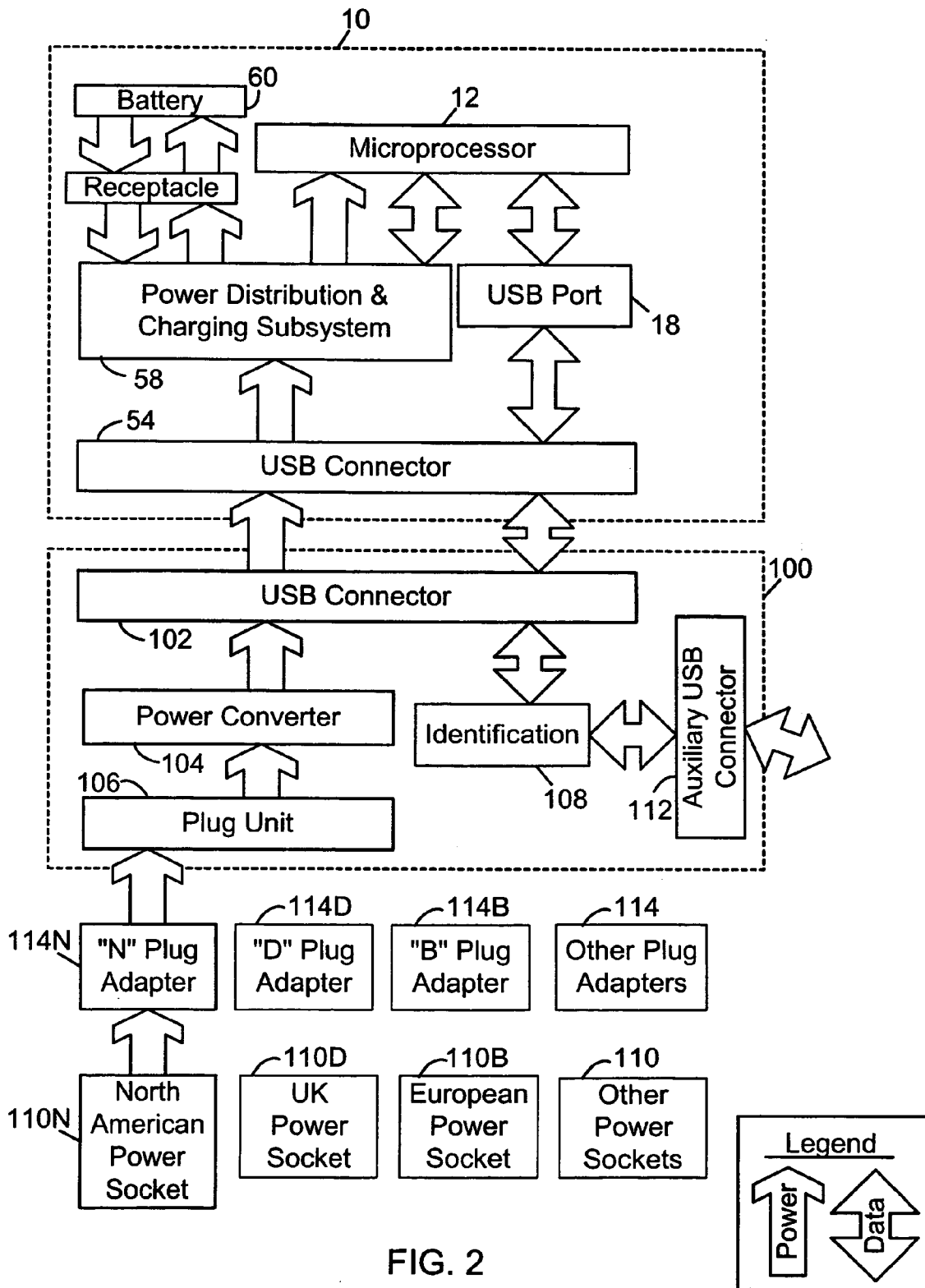


FIG. 2

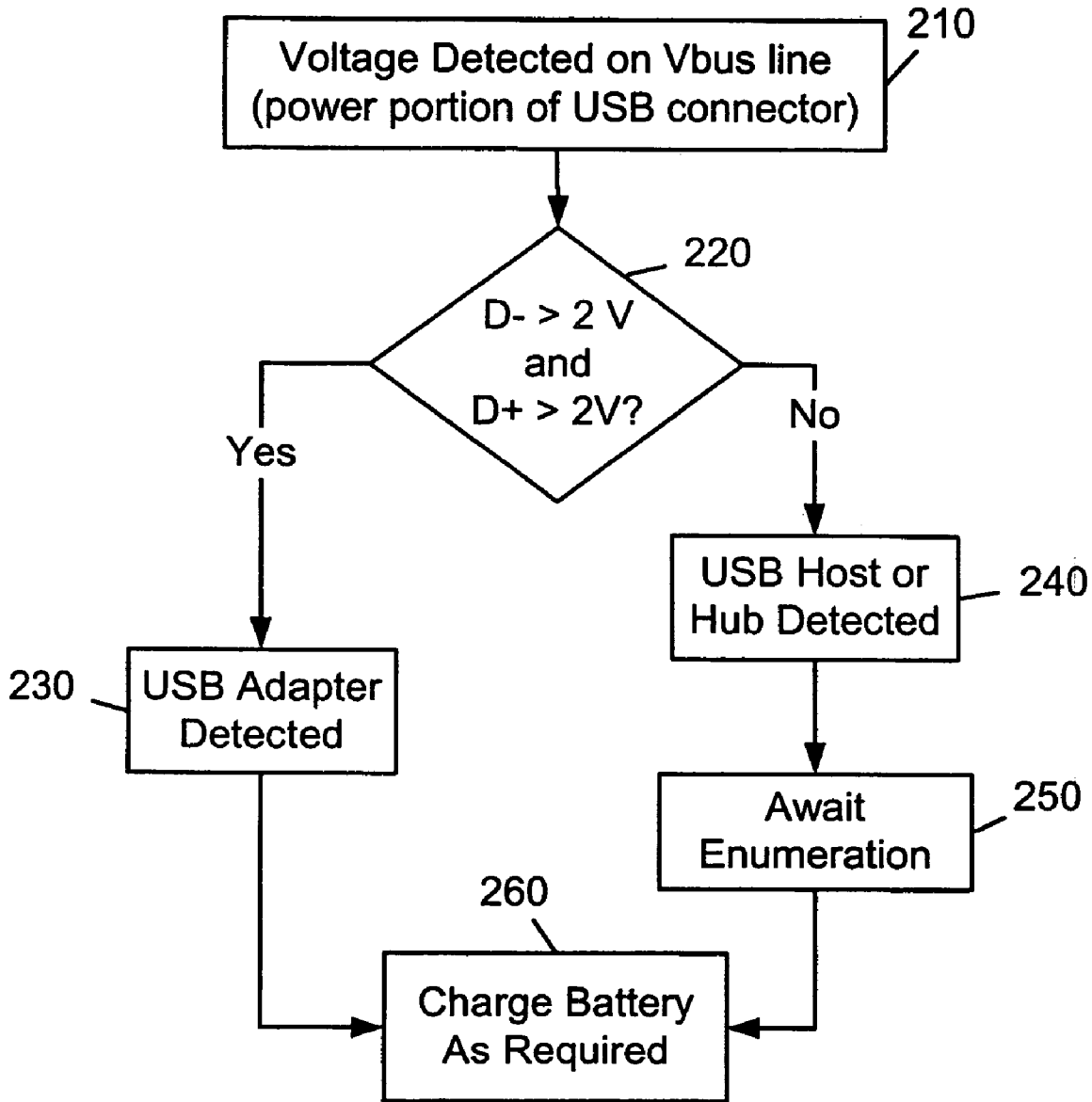


FIG. 3

# Explore Litigation Insights

Docket Alarm provides insights to develop a more informed litigation strategy and the peace of mind of knowing you're on top of things.

## Real-Time Litigation Alerts



Keep your litigation team up-to-date with **real-time alerts** and advanced team management tools built for the enterprise, all while greatly reducing PACER spend.

Our comprehensive service means we can handle Federal, State, and Administrative courts across the country.

## Advanced Docket Research



With over 230 million records, Docket Alarm's cloud-native docket research platform finds what other services can't. Coverage includes Federal, State, plus PTAB, TTAB, ITC and NLRB decisions, all in one place.

Identify arguments that have been successful in the past with full text, pinpoint searching. Link to case law cited within any court document via Fastcase.

## Analytics At Your Fingertips



Learn what happened the last time a particular judge, opposing counsel or company faced cases similar to yours.

Advanced out-of-the-box PTAB and TTAB analytics are always at your fingertips.

## API

Docket Alarm offers a powerful API (application programming interface) to developers that want to integrate case filings into their apps.

## LAW FIRMS

Build custom dashboards for your attorneys and clients with live data direct from the court.

Automate many repetitive legal tasks like conflict checks, document management, and marketing.

## FINANCIAL INSTITUTIONS

Litigation and bankruptcy checks for companies and debtors.

## E-DISCOVERY AND LEGAL VENDORS

Sync your system to PACER to automate legal marketing.