



US008751648B2

(12) **United States Patent**
Scherzer et al.

(10) **Patent No.:** **US 8,751,648 B2**
(45) **Date of Patent:** **Jun. 10, 2014**

(54) **PROVIDING AND RECEIVING NETWORK ACCESS**

(75) Inventors: **Shimon Scherzer**, Los Gatos, CA (US);
Tamir Scherzer, Herzelia (IL)

(73) Assignee: **Wefi, Inc.**, Marlborough, MA (US)

(*) Notice: Subject to any disclaimer, the term of this patent is extended or adjusted under 35 U.S.C. 154(b) by 2014 days.

(21) Appl. No.: **11/441,827**

(22) Filed: **May 25, 2006**

(65) **Prior Publication Data**

US 2007/0033197 A1 Feb. 8, 2007

Related U.S. Application Data

(60) Provisional application No. 60/687,463, filed on Jun. 3, 2005, provisional application No. 60/728,918, filed on Oct. 21, 2005, provisional application No. 60/772,084, filed on Feb. 9, 2006, provisional application No. 60/776,444, filed on Feb. 23, 2006.

(51) **Int. Cl.**
G06F 15/173 (2006.01)
G06F 15/177 (2006.01)
G06F 15/16 (2006.01)

(52) **U.S. Cl.**
USPC **709/225**; 709/220; 709/229

(58) **Field of Classification Search**
USPC 709/225
See application file for complete search history.

(56) **References Cited**

U.S. PATENT DOCUMENTS

6,498,786 B1 * 12/2002 Kirkby et al. 370/322
7,103,661 B2 9/2006 Klein

7,266,595 B1	9/2007	Black et al.	
7,359,387 B2 *	4/2008	Wang	370/400
7,483,984 B1	1/2009	Jonker et al.	
2002/0085719 A1 *	7/2002	Crosbie	380/248
2002/0087573 A1 *	7/2002	Reuning et al.	707/102
2002/0120757 A1 *	8/2002	Sutherland et al.	709/229
2002/0124188 A1 *	9/2002	Sherman et al.	713/201
2002/0184310 A1 *	12/2002	Traversat et al.	709/204
2003/0005133 A1 *	1/2003	Banerjee et al.	709/229
2003/0028596 A1 *	2/2003	Toyota et al.	709/204
2004/0066759 A1	4/2004	Molteni et al.	
2004/0209622 A1 *	10/2004	Kotzin	455/452.1
2005/0070279 A1	3/2005	Ginzburg et al.	
2005/0198388 A1 *	9/2005	Teodosiu et al.	709/245
2005/0223086 A1 *	10/2005	Raverdy et al.	709/220

(Continued)

OTHER PUBLICATIONS

Bahl et al. "MultiNet: Connecting to Multiple IEEE 802.11 Networks Using a Single Wireless Card." Technical Report MSR-TR-2003-46. Aug. 2003. Microsoft Research Microsoft Corporation. Redmond, WA.

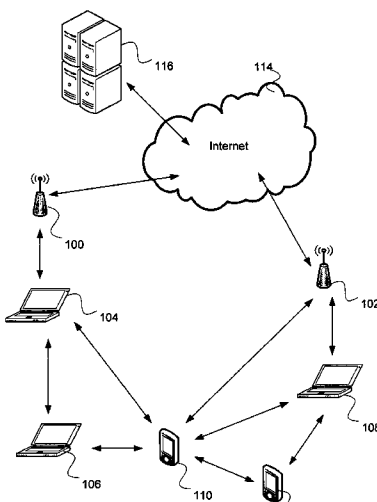
Primary Examiner — Richard G Keehn

(74) *Attorney, Agent, or Firm* — Finnegan, Henderson, Farabow, Garrett & Dunner, LLP

(57) **ABSTRACT**

The disclosure concerns the expansion of wireless network access beyond networks for which a user is registered. A method of facilitating connection to a wireless network access point includes receiving a request from a user device for access information-required to connect to a network through an access point. The network being a network for which the user is not registered, determining user contribution account acceptability for the access point, and providing the access information to the user if the user contribution account is acceptable for said access point. In this manner, users who are willing to share network access to networks for which they are registered will be able to access networks for which they are not registered.

55 Claims, 6 Drawing Sheets



US 8,751,648 B2

Page 2

(56)

References Cited

U.S. PATENT DOCUMENTS

2006/0031515 A1 * 2/2006 Van Gassel et al. 709/227
2006/0089157 A1 * 4/2006 Casey et al. 455/456.3

2006/0168438 A1 7/2006 Klein
2007/0066304 A1 3/2007 Lee
2008/0013487 A1 1/2008 Molteni et al.

* cited by examiner

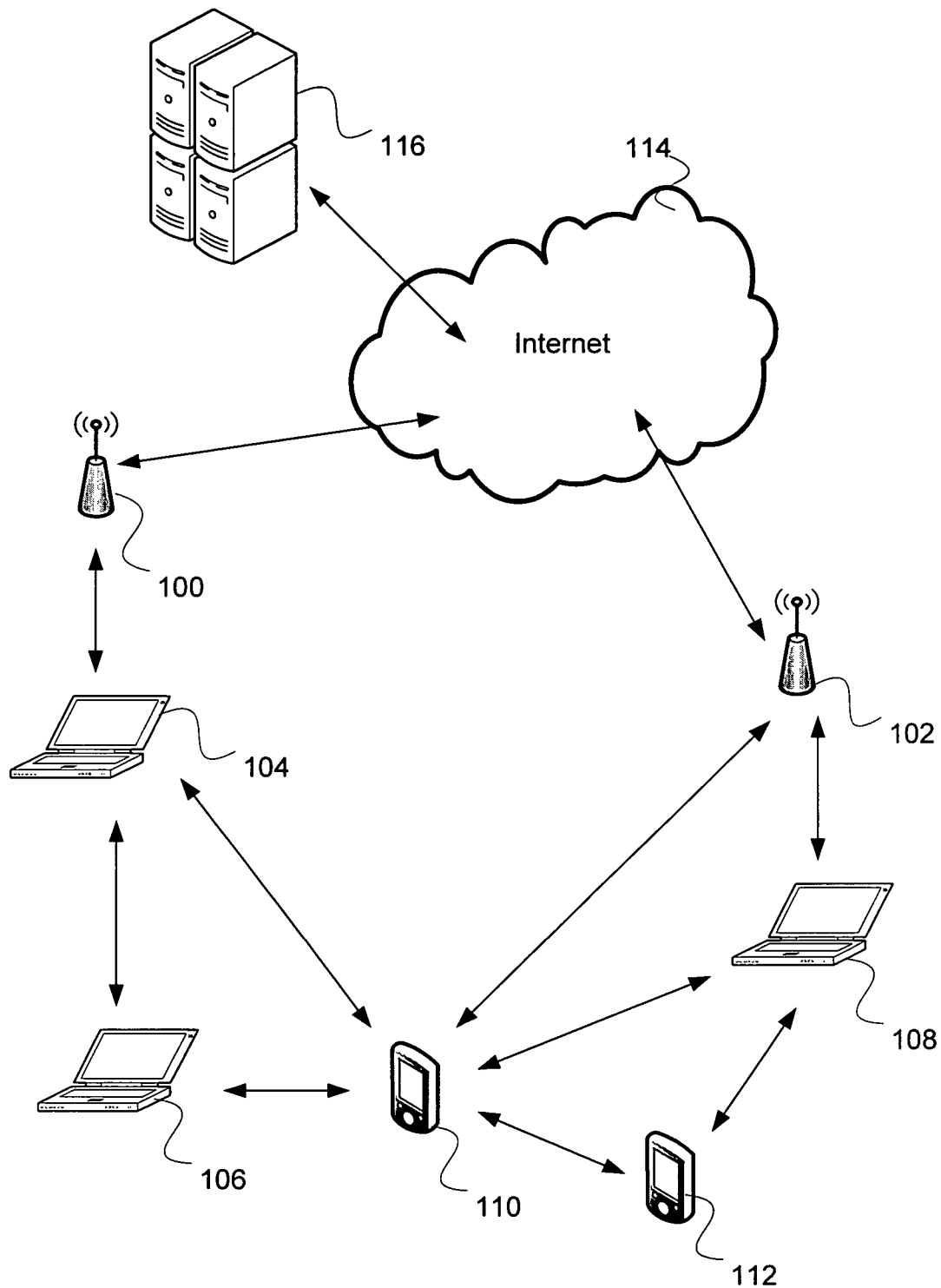


FIG. 1

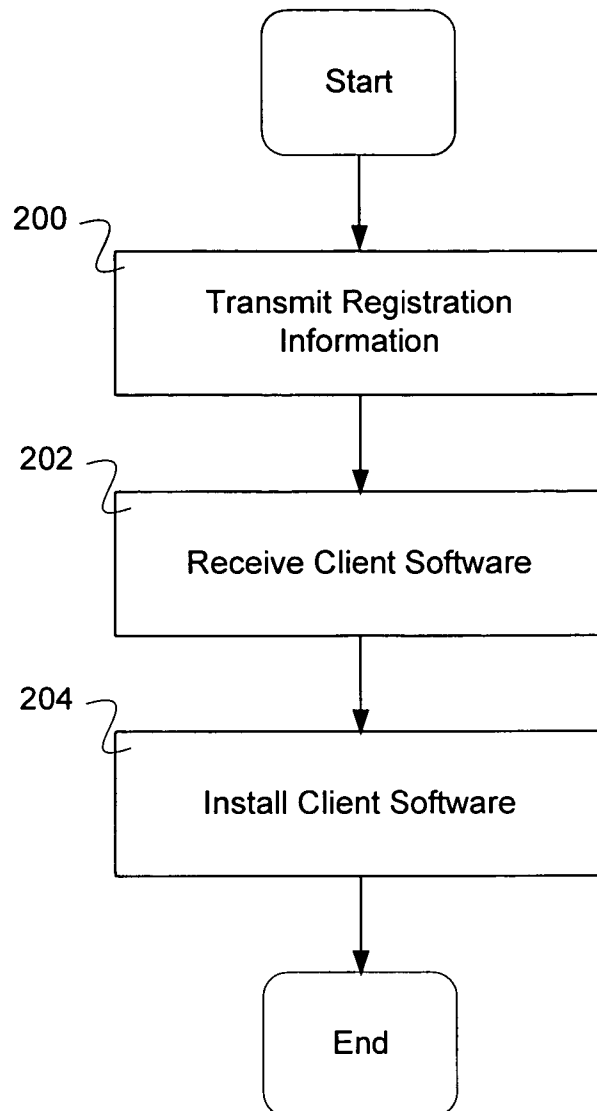


FIG. 2

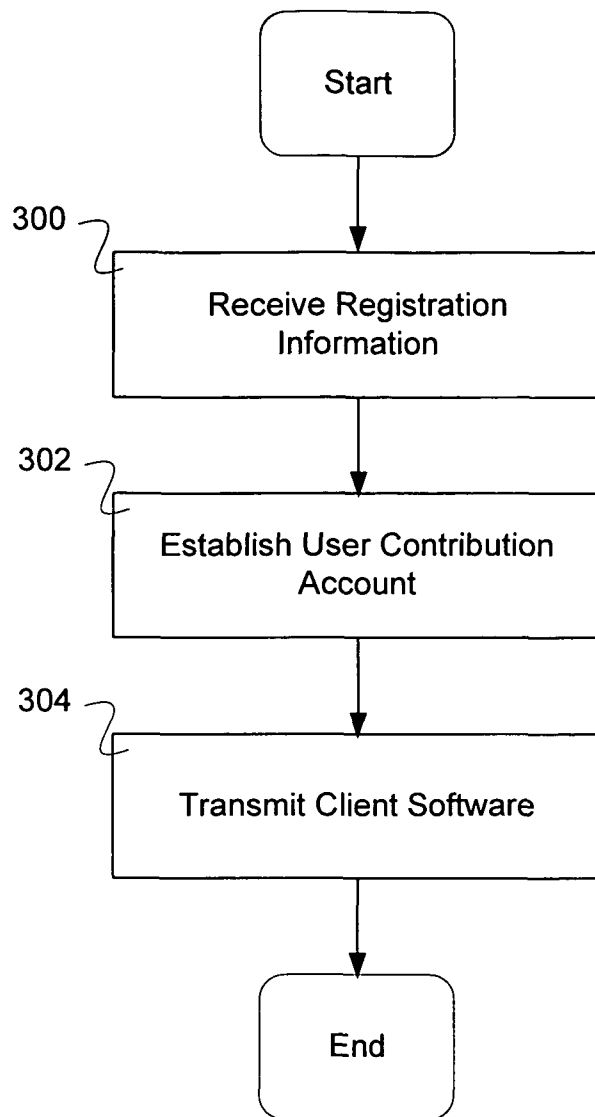


FIG. 3

Explore Litigation Insights

Docket Alarm provides insights to develop a more informed litigation strategy and the peace of mind of knowing you're on top of things.

Real-Time Litigation Alerts



Keep your litigation team up-to-date with **real-time alerts** and advanced team management tools built for the enterprise, all while greatly reducing PACER spend.

Our comprehensive service means we can handle Federal, State, and Administrative courts across the country.

Advanced Docket Research



With over 230 million records, Docket Alarm's cloud-native docket research platform finds what other services can't. Coverage includes Federal, State, plus PTAB, TTAB, ITC and NLRB decisions, all in one place.

Identify arguments that have been successful in the past with full text, pinpoint searching. Link to case law cited within any court document via Fastcase.

Analytics At Your Fingertips



Learn what happened the last time a particular judge, opposing counsel or company faced cases similar to yours.

Advanced out-of-the-box PTAB and TTAB analytics are always at your fingertips.

API

Docket Alarm offers a powerful API (application programming interface) to developers that want to integrate case filings into their apps.

LAW FIRMS

Build custom dashboards for your attorneys and clients with live data direct from the court.

Automate many repetitive legal tasks like conflict checks, document management, and marketing.

FINANCIAL INSTITUTIONS

Litigation and bankruptcy checks for companies and debtors.

E-DISCOVERY AND LEGAL VENDORS

Sync your system to PACER to automate legal marketing.