



# United States Patent [19]

[11] Patent Number: **5,557,758**

Bland et al.

[45] Date of Patent: **Sep. 17, 1996**

[54] **BRIDGE BETWEEN TWO BUSES OF A COMPUTER SYSTEM THAT DETERMINES THE LOCATION OF MEMORY OR ACCESSES FROM BUS MASTERS ON ONE OF THE BUSES**

5,446,869 8/1995 Padgett et al. .... 395/500

### OTHER PUBLICATIONS

"82420/82430 PCIset ISA and EISA Bridges", Intel, Dec. 1993, pp. 15-19.

"Peripheral Component Interconnect", Revision I.O. Specification, Dec. 1992, Section 3.6.1.

[75] Inventors: **Patrick M. Bland**, Austin, Tex.; **Richard G. Hofmann**, Cary, N.C.; **Sagi Katz**, Haifa, Israel; **Dennis Moeller**; **Lance M. Venarchick**, both of Boca Raton, Fla.

*Primary Examiner*—Jack B. Harvey  
*Assistant Examiner*—David A. Wiley  
*Attorney, Agent, or Firm*—Anthony N. Magistrale; Daniel E. McConnell

[73] Assignee: **International Business Machines Corporation**, Armonk, N.Y.

### [57] ABSTRACT

A bridge is provided between an industry standard architecture (ISA) bus and a peripheral controller interconnect (PCI) bus and performs memory cycles on both buses simultaneously when a master on the ISA bus initiates a memory transfer. Data is steered between the ISA and PCI buses when a slave on the PCI bus claims the memory address within a predetermined time period after the memory cycle is initiated on the PCI bus. The ISA bus is isolated from the PCI bus when no slave on the PCI bus claims the memory address. This allows the memory cycle to be completed on the ISA bus, and the memory cycle on the PCI bus is terminated.

[21] Appl. No.: **351,192**

[22] Filed: **Nov. 30, 1994**

[51] Int. Cl.<sup>6</sup> ..... **G06F 13/00**

[52] U.S. Cl. .... **395/308; 395/306**

[58] Field of Search ..... 395/306, 308; 370/85.13

### [56] References Cited

#### U.S. PATENT DOCUMENTS

- 5,191,653 3/1993 Banks et al. .... 395/885
- 5,191,657 3/1993 Ludwig et al. .... 395/306

**18 Claims, 4 Drawing Sheets**

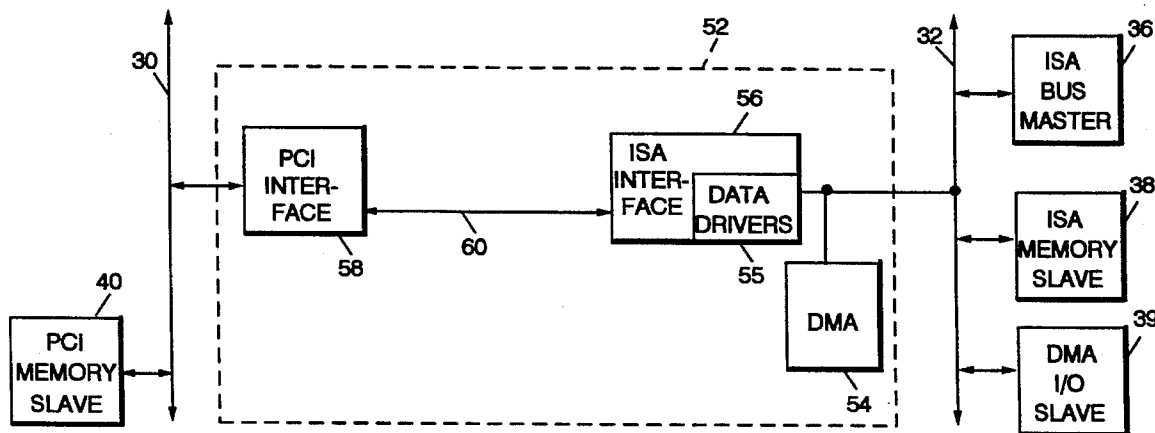
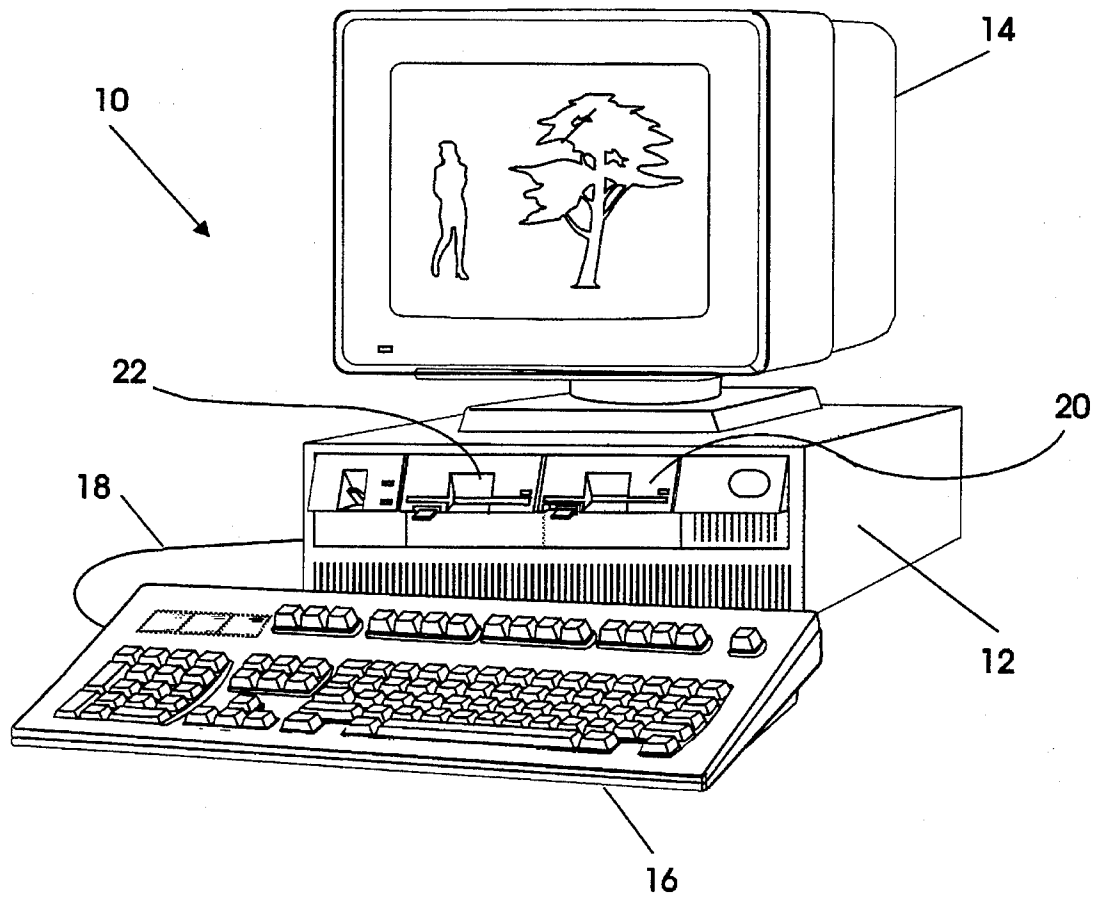


FIG. 1



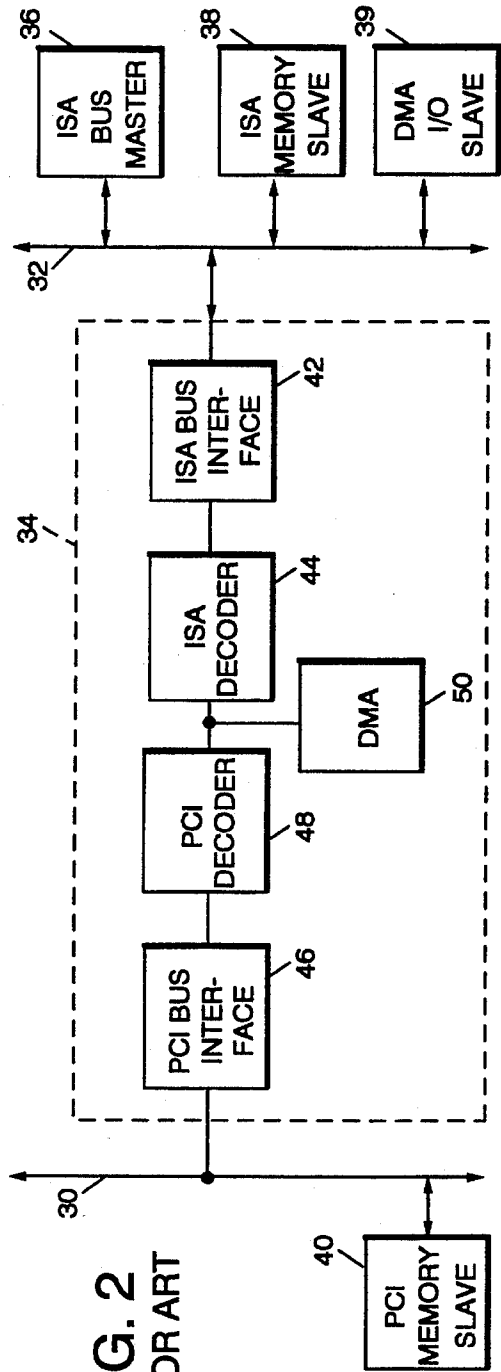


FIG. 2  
PRIOR ART

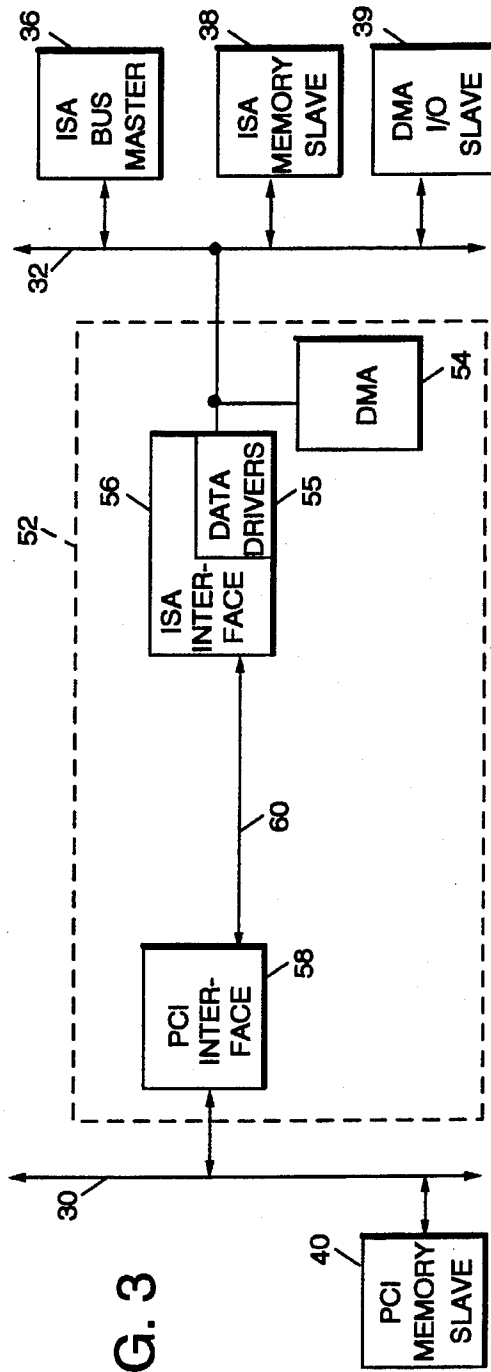


FIG. 3

FIG. 4

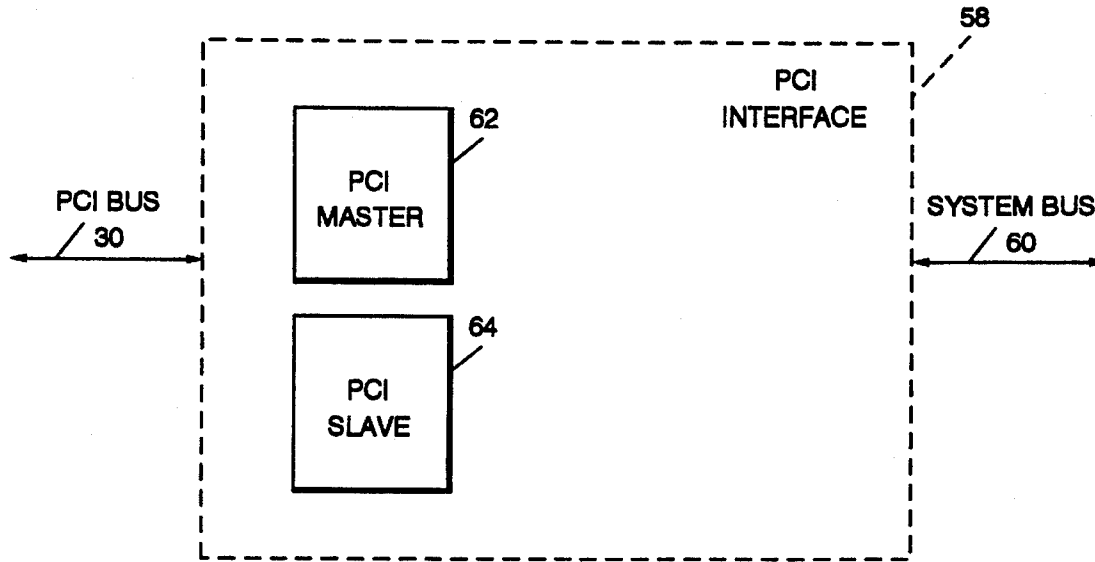
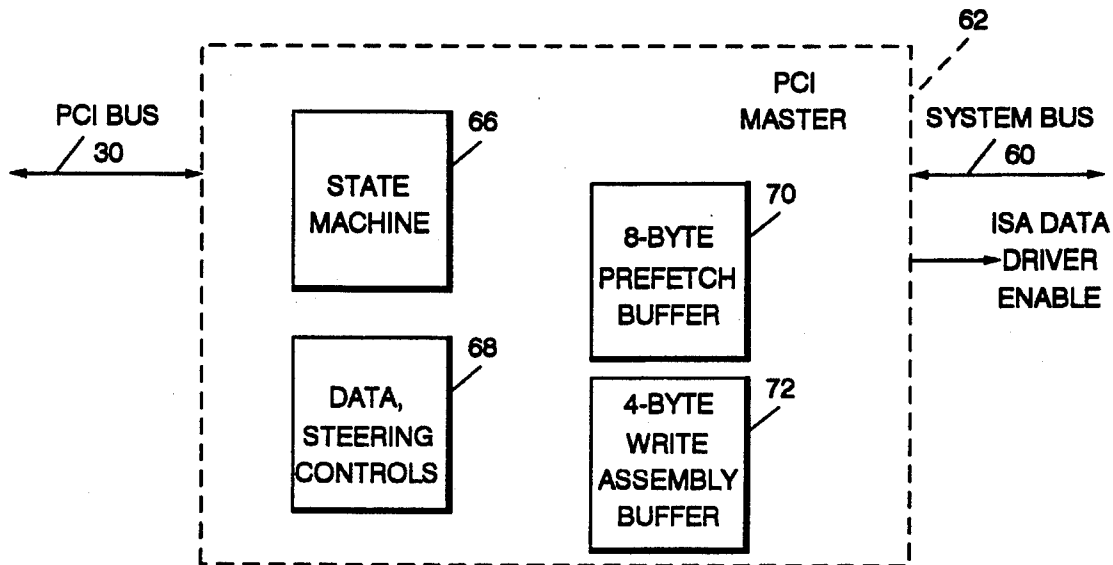


FIG. 5



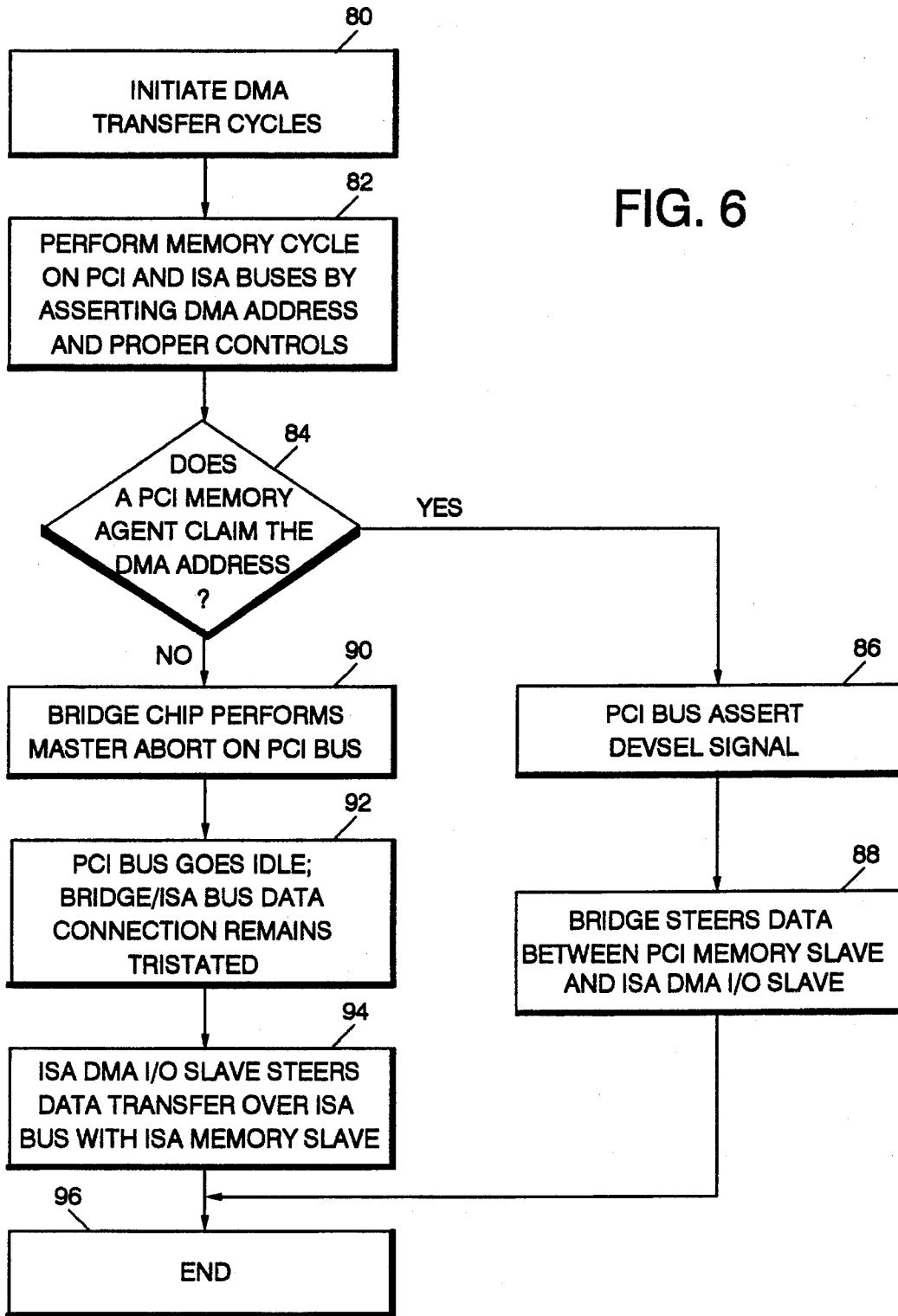


FIG. 6

# Explore Litigation Insights

Docket Alarm provides insights to develop a more informed litigation strategy and the peace of mind of knowing you're on top of things.

## Real-Time Litigation Alerts



Keep your litigation team up-to-date with **real-time alerts** and advanced team management tools built for the enterprise, all while greatly reducing PACER spend.

Our comprehensive service means we can handle Federal, State, and Administrative courts across the country.

## Advanced Docket Research



With over 230 million records, Docket Alarm's cloud-native docket research platform finds what other services can't. Coverage includes Federal, State, plus PTAB, TTAB, ITC and NLRB decisions, all in one place.

Identify arguments that have been successful in the past with full text, pinpoint searching. Link to case law cited within any court document via Fastcase.

## Analytics At Your Fingertips



Learn what happened the last time a particular judge, opposing counsel or company faced cases similar to yours.

Advanced out-of-the-box PTAB and TTAB analytics are always at your fingertips.

## API

Docket Alarm offers a powerful API (application programming interface) to developers that want to integrate case filings into their apps.

## LAW FIRMS

Build custom dashboards for your attorneys and clients with live data direct from the court.

Automate many repetitive legal tasks like conflict checks, document management, and marketing.

## FINANCIAL INSTITUTIONS

Litigation and bankruptcy checks for companies and debtors.

## E-DISCOVERY AND LEGAL VENDORS

Sync your system to PACER to automate legal marketing.