



US005305435A

United States Patent [19] Bronson

[11] Patent Number: **5,305,435**
[45] Date of Patent: **Apr. 19, 1994**

[54] **COMPUTER WINDOWS MANAGEMENT SYSTEM AND METHOD FOR SIMULATING OFF-SCREEN DOCUMENT STORAGE AND RETRIEVAL**

5,140,678 8/1992 Torres 395/159

[75] Inventor: **Barry Bronson**, Saratoga, Calif.
[73] Assignee: **Hewlett-Packard Company**, Palo Alto, Calif.
[21] Appl. No.: **57,938**
[22] Filed: **May 7, 1993**

OTHER PUBLICATIONS

Seybold, "Windows 30", Andrew Seybold's Onlook on Professional Computing, May 1990, p. 1 (4).
Seybold et al., "Doing Windows", Andrew Seybold-'Outlook on Professional Computing, May 1990, p. 6 (3).
McMullen et al., "Microsoft Introduces Windows 3.0", Newsbytes, May 24, 1990.
Microsoft Windows User's Guide, vol. 3.0, Microsoft Corp., 1990, pp. 5-76.
Carman, Chip, "Tip Sheet", Mac User, Jul. 1988, pp. 125-130.
Petzold, Charles, "Introducing the OS-2 Presentation Manager", PC Magazine, Jul. 1988, pp. 379-389.

Related U.S. Application Data

[63] Continuation of Ser. No. 554,237, Jul. 17, 1990, abandoned.
[51] Int. Cl.⁵ **G06F 15/62**
[52] U.S. Cl. **395/159; 395/157**
[58] Field of Search 395/155, -161; 340/712-713, 723, 709-710; 345/119-121, 901

Primary Examiner—Heather R. Herndon
Assistant Examiner—John E. Breene

References Cited

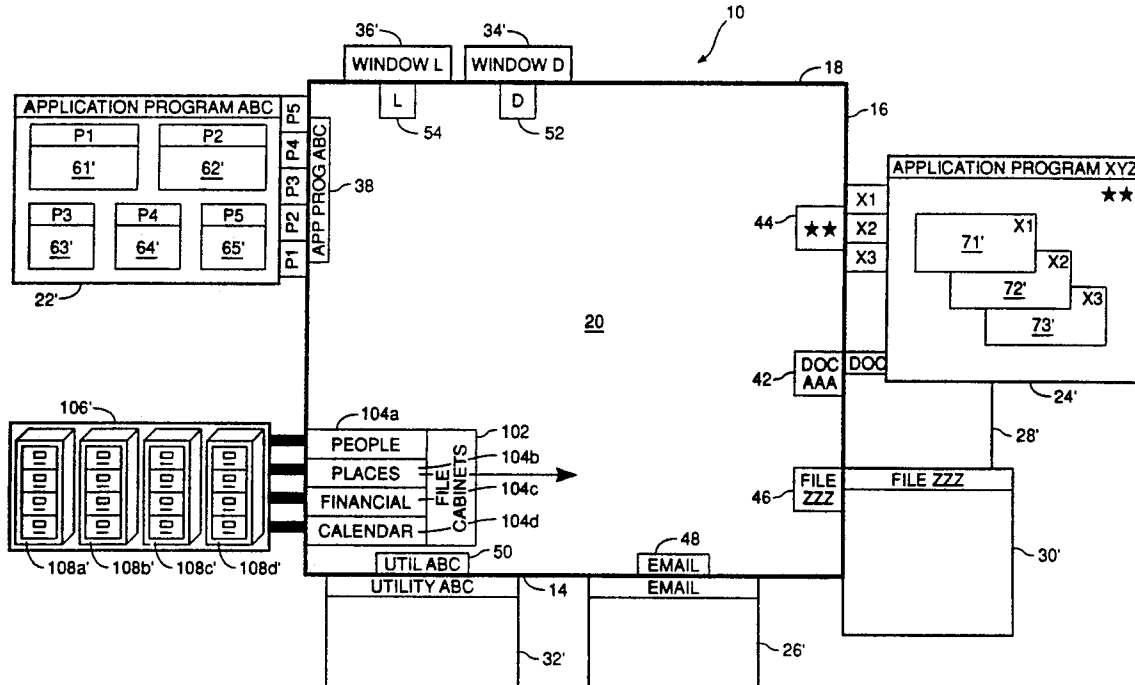
U.S. PATENT DOCUMENTS

4,555,775	11/1985	Pike	395/158
4,653,020	3/1987	Cheselka et al.	395/157
4,712,191	12/1987	Penna	395/159
4,769,636	9/1988	Iwami et al.	395/158 X
4,780,709	10/1988	Randall	345/120
4,783,648	11/1988	Homma et al.	345/120
4,819,189	4/1989	Kikuchi et al.	395/158
4,831,556	5/1989	Oono	395/157
4,862,389	8/1989	Takagi	395/158 X
4,899,136	2/1990	Beard et al.	395/159 X
5,060,170	10/1991	Bourgeois et al.	395/157
5,107,443	4/1992	Smith et al.	395/158
5,140,677	8/1992	Fleming et al.	395/157 X

[57] ABSTRACT

A novel computer display interface which simulates familiar document handling activities based upon a unique display metaphor representative of a standard office filing system and work area of a desk. The display system includes multi-windows which are displayed in a central screen area designated for just active computer windows. The interface further includes designating the edge areas of the screen for displaying window tabs of inactive windows. The window tabs are arranged in a way to simulate an integrated filing system, and to provide a convenient method of organizing and viewing computer files.

10 Claims, 13 Drawing Sheets



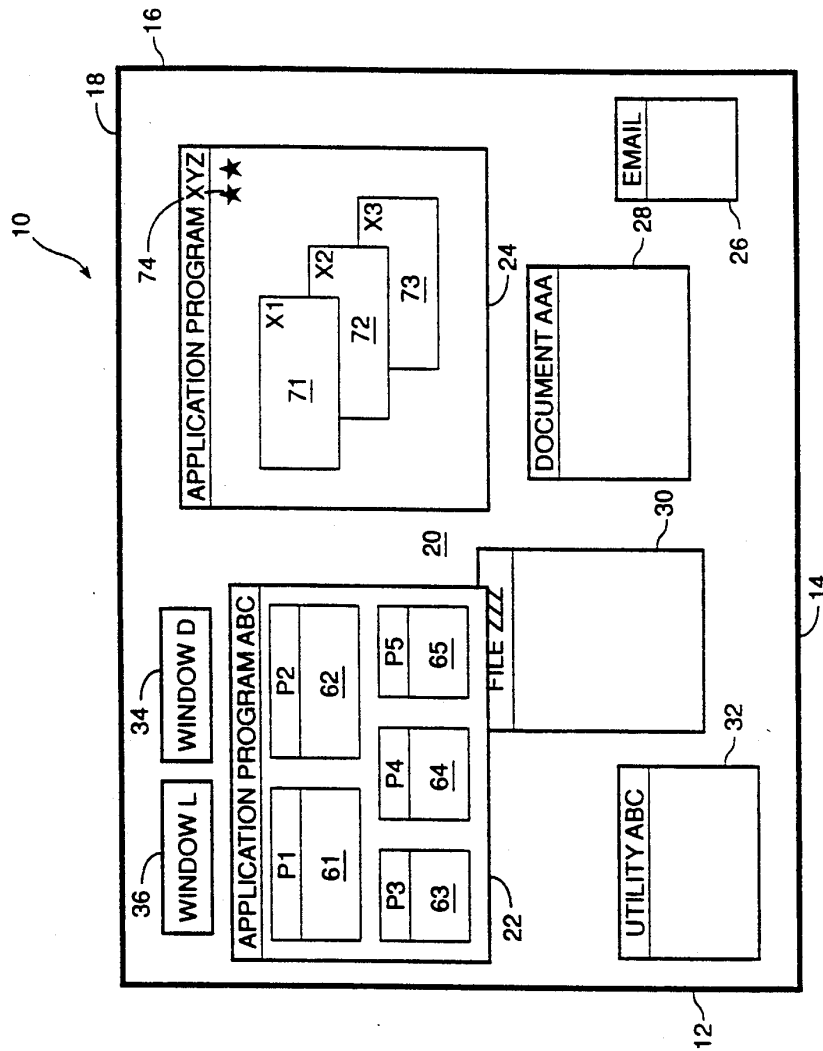


FIG. 1

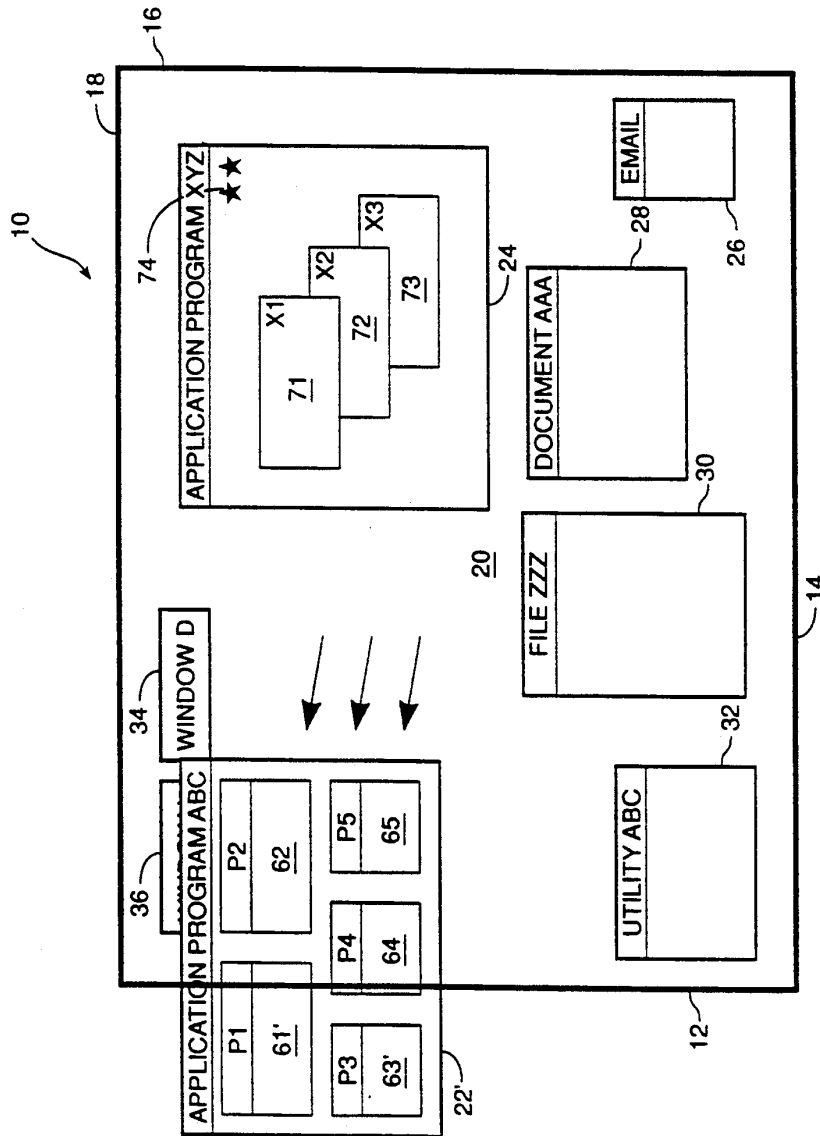


FIG. 2

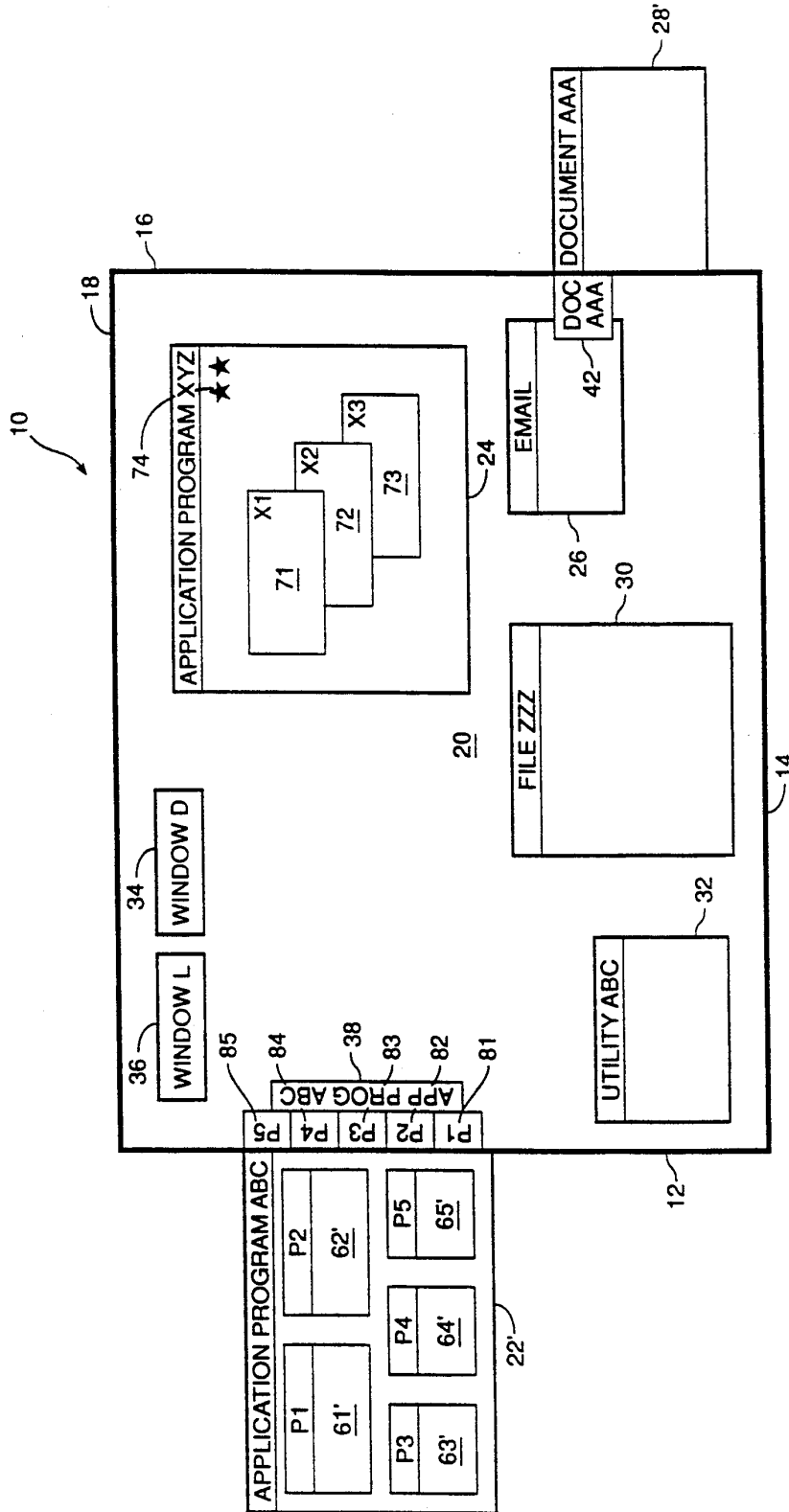


FIG. 3

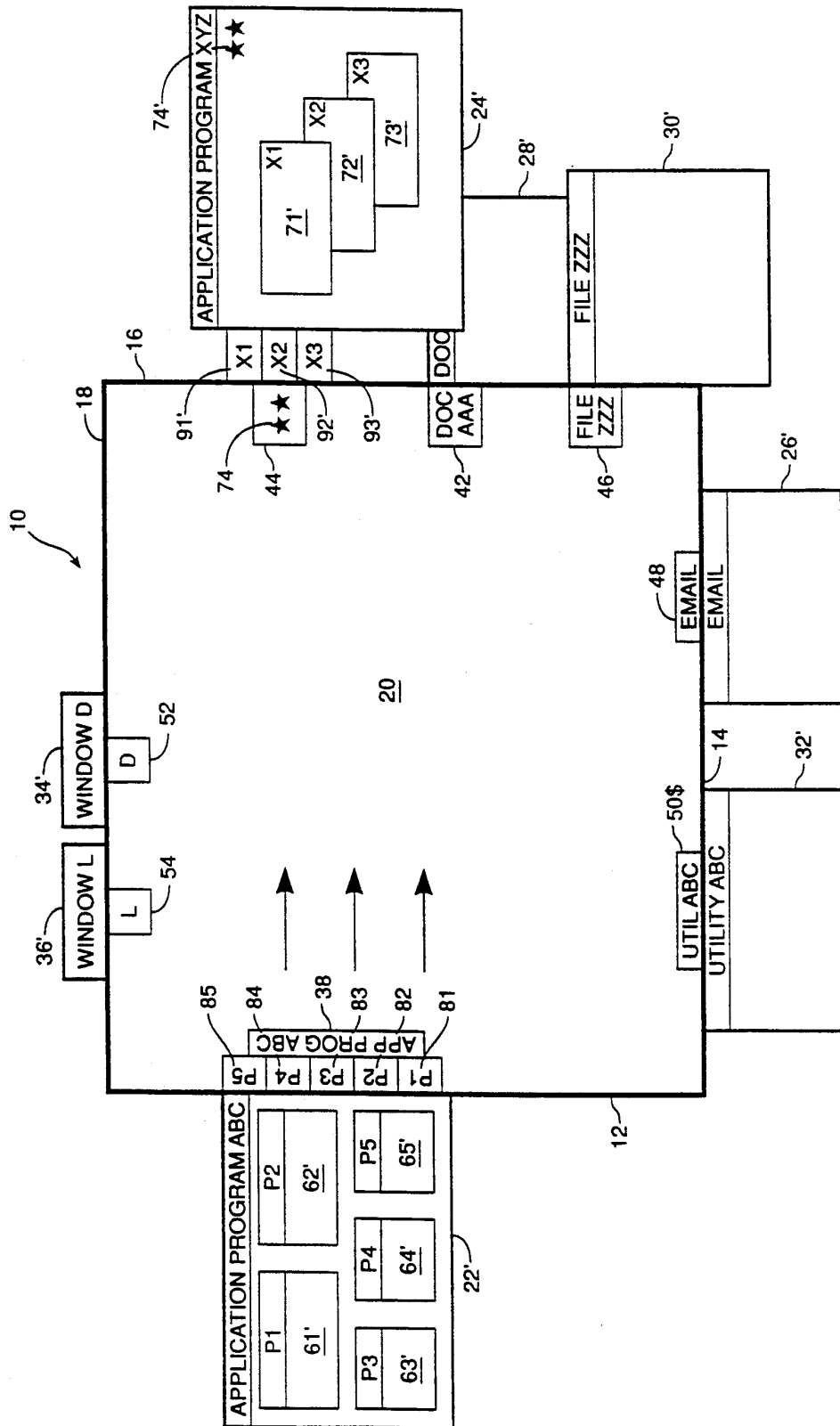


FIG. 4

Explore Litigation Insights

Docket Alarm provides insights to develop a more informed litigation strategy and the peace of mind of knowing you're on top of things.

Real-Time Litigation Alerts



Keep your litigation team up-to-date with **real-time alerts** and advanced team management tools built for the enterprise, all while greatly reducing PACER spend.

Our comprehensive service means we can handle Federal, State, and Administrative courts across the country.

Advanced Docket Research



With over 230 million records, Docket Alarm's cloud-native docket research platform finds what other services can't. Coverage includes Federal, State, plus PTAB, TTAB, ITC and NLRB decisions, all in one place.

Identify arguments that have been successful in the past with full text, pinpoint searching. Link to case law cited within any court document via Fastcase.

Analytics At Your Fingertips



Learn what happened the last time a particular judge, opposing counsel or company faced cases similar to yours.

Advanced out-of-the-box PTAB and TTAB analytics are always at your fingertips.

API

Docket Alarm offers a powerful API (application programming interface) to developers that want to integrate case filings into their apps.

LAW FIRMS

Build custom dashboards for your attorneys and clients with live data direct from the court.

Automate many repetitive legal tasks like conflict checks, document management, and marketing.

FINANCIAL INSTITUTIONS

Litigation and bankruptcy checks for companies and debtors.

E-DISCOVERY AND LEGAL VENDORS

Sync your system to PACER to automate legal marketing.