



US006100878A

United States Patent [19] Hirayama

[11] **Patent Number:** **6,100,878**
[45] **Date of Patent:** **Aug. 8, 2000**

[54] INFORMATION PROCESSING APPARATUS

[75] Inventor: **Tomoshi Hirayama**, Tokyo, Japan
[73] Assignee: **Sony Corporation**, Tokyo, Japan

[21] Appl. No.: **07/978,450**
[22] Filed: **Nov. 18, 1992**

Related U.S. Application Data

[63] Continuation of application No. 07/642,994, Jan. 18, 1991.

Foreign Application Priority Data

Jan. 19, 1990 [JP] Japan 2-009626

[51] **Int. Cl.⁷** **G09G 5/00**

[52] **U.S. Cl.** **345/179; 345/339; 345/348; 345/350**

[58] **Field of Search** 340/706, 712, 340/707, 721, 720, 723, 798, 799; 395/145-149, 159; 178/18, 19; 345/156, 173, 179, 182, 112, 185, 901, 146, 121, 122, 125, 330, 340, 348, 350

References Cited

U.S. PATENT DOCUMENTS

| | | | | |
|-----------|---------|---------------|-------|---------|
| 4,475,239 | 10/1984 | Van Raamsdonk | | 340/707 |
| 4,839,634 | 6/1989 | More et al. | | 178/18 |
| 4,855,725 | 8/1989 | Fernandes | | 340/706 |
| 4,965,558 | 10/1990 | Saki et al. | | 345/156 |
| 5,075,675 | 12/1991 | Barker et al. | | 340/723 |
| 5,347,628 | 9/1994 | Brewer et al. | | 395/159 |

FOREIGN PATENT DOCUMENTS

| | | |
|-------------|---------|----------------------|
| 0 120 977 | 10/1984 | European Pat. Off. . |
| 0 331 329 | 9/1989 | European Pat. Off. . |
| 2193827 | 2/1988 | United Kingdom . |
| WO 89/01658 | 2/1989 | WIPO . |

OTHER PUBLICATIONS

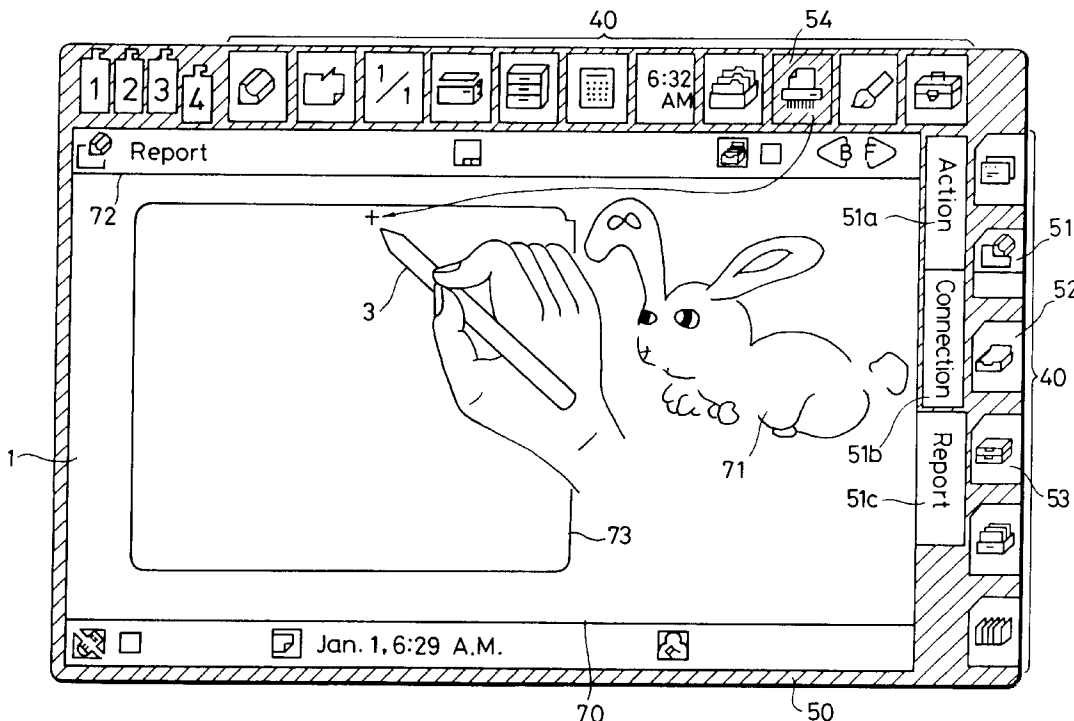
“A Taxonomy of Window Manager User Interfaces”, IEEE Computer Graphics and Applications, Sep. 1988, No. 5, pp. 65-84.
“Using MacWrite and MacPaint”, Tim Field, pp. 4, 8, 14, 22, 43-47, and 155, 1984.
“WordPerfect”, Karen L. Acerson, 1988 pp. 2, 75, 76, 530, 1081.

Primary Examiner—Dennis-Doon Chow
Attorney, Agent, or Firm—Hill & Simpson

[57] ABSTRACT

An information processing apparatus, typically incorporated in a small-size, portable computerized electronic data storage device, has a display unit combined with a tablet which coacts with a stylus to instruct a CPU to process stored information in different modes. When desired pages of information are to be copied or deleted, a displayed icon for a copying or deleting process is touched by the stylus to display a corresponding window on the display unit. The range of pages to be copied or deleted is specified in the displayed window using the stylus. While the desired pages are being copied or deleted, a moving image indicating a visual representation of a copier or a shredder is also displayed.

11 Claims, 35 Drawing Sheets



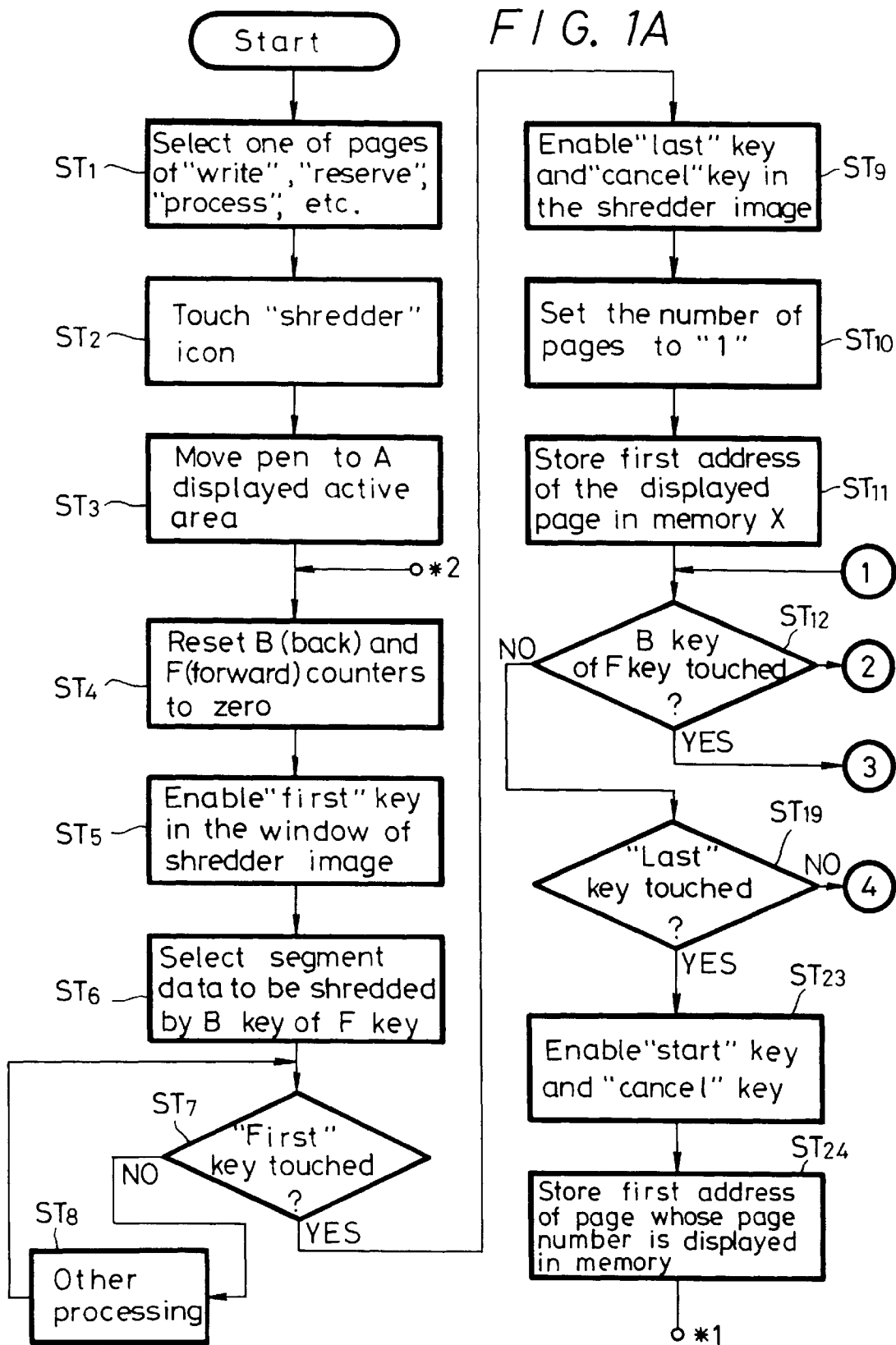


FIG. 1B

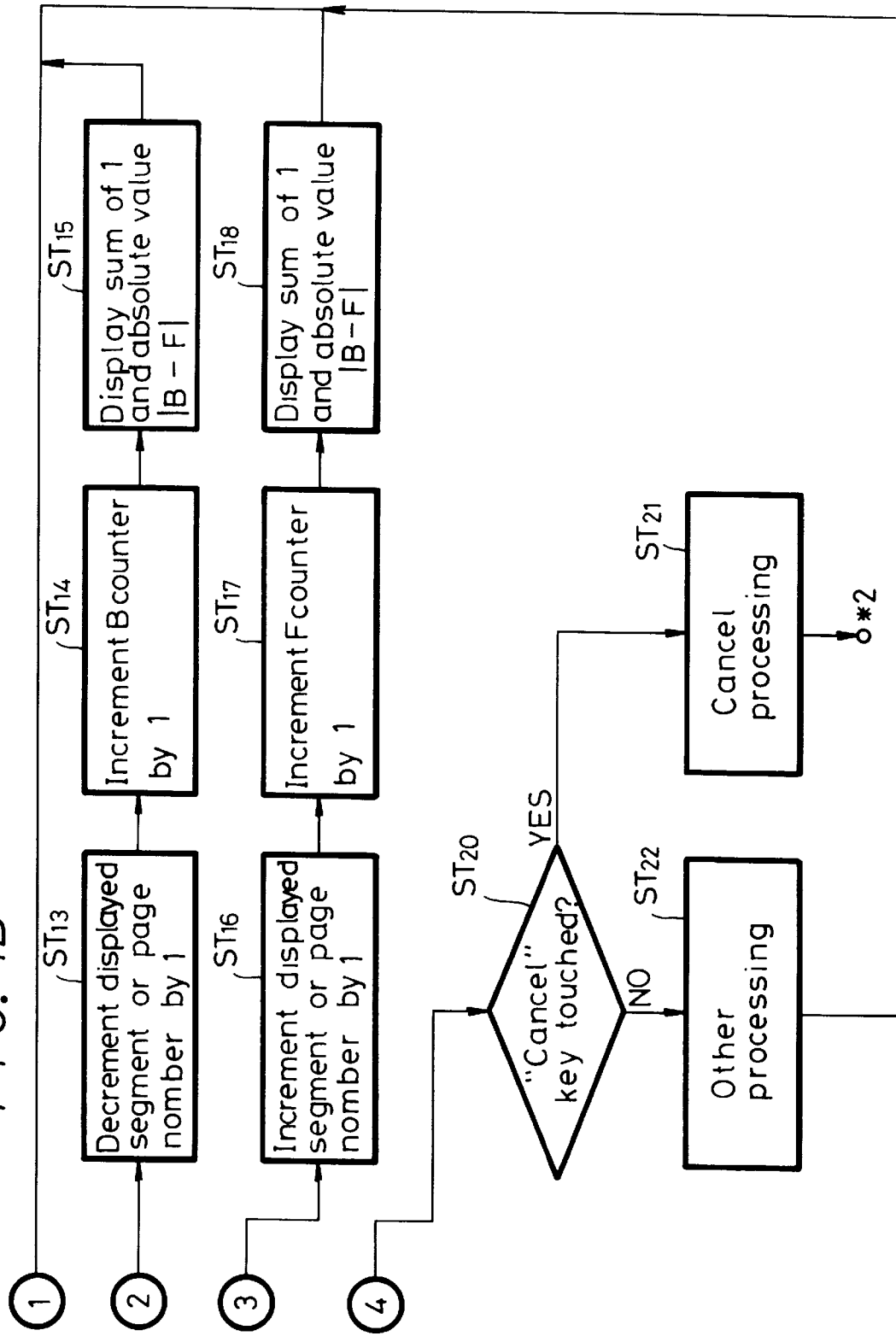
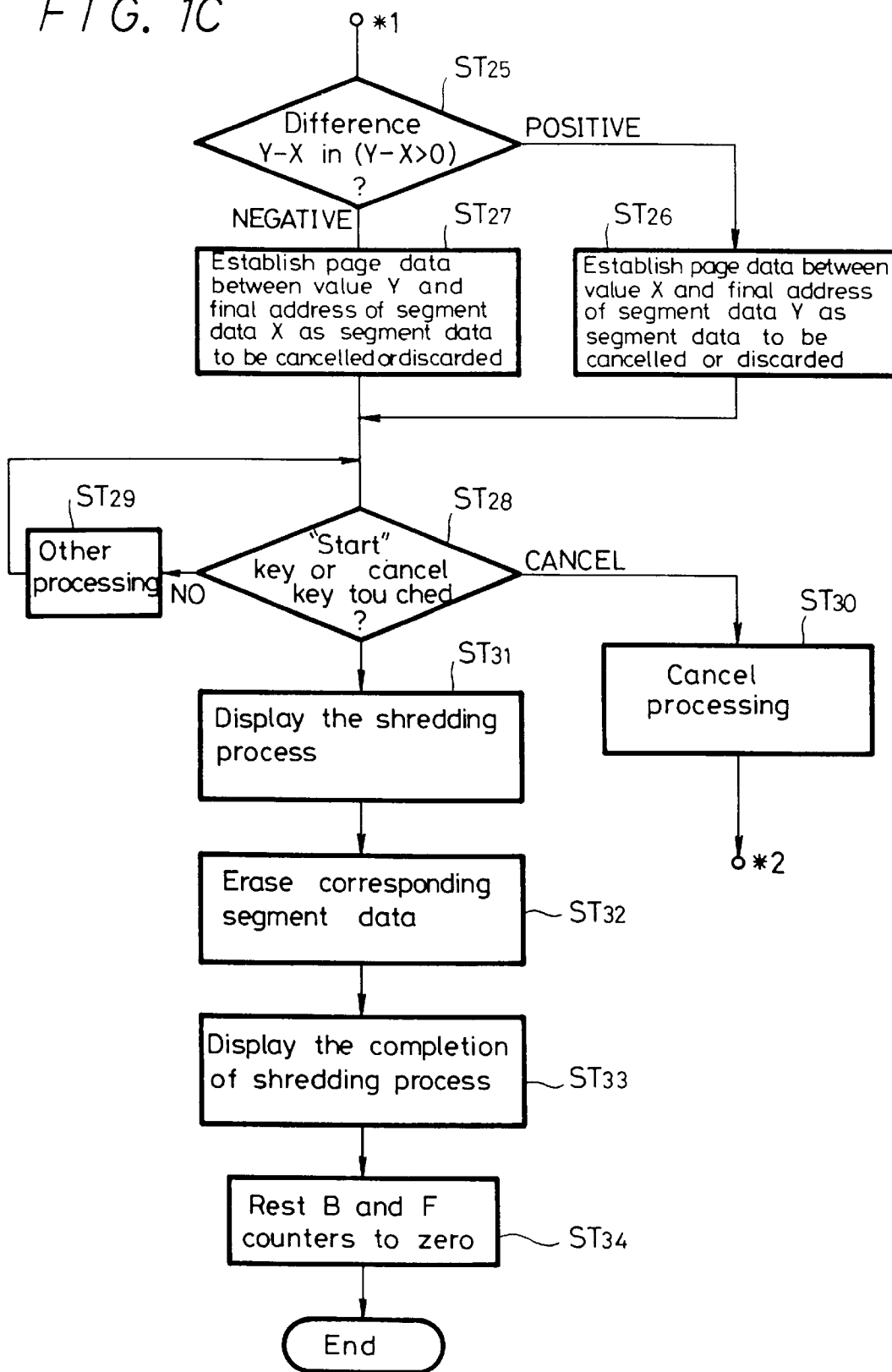
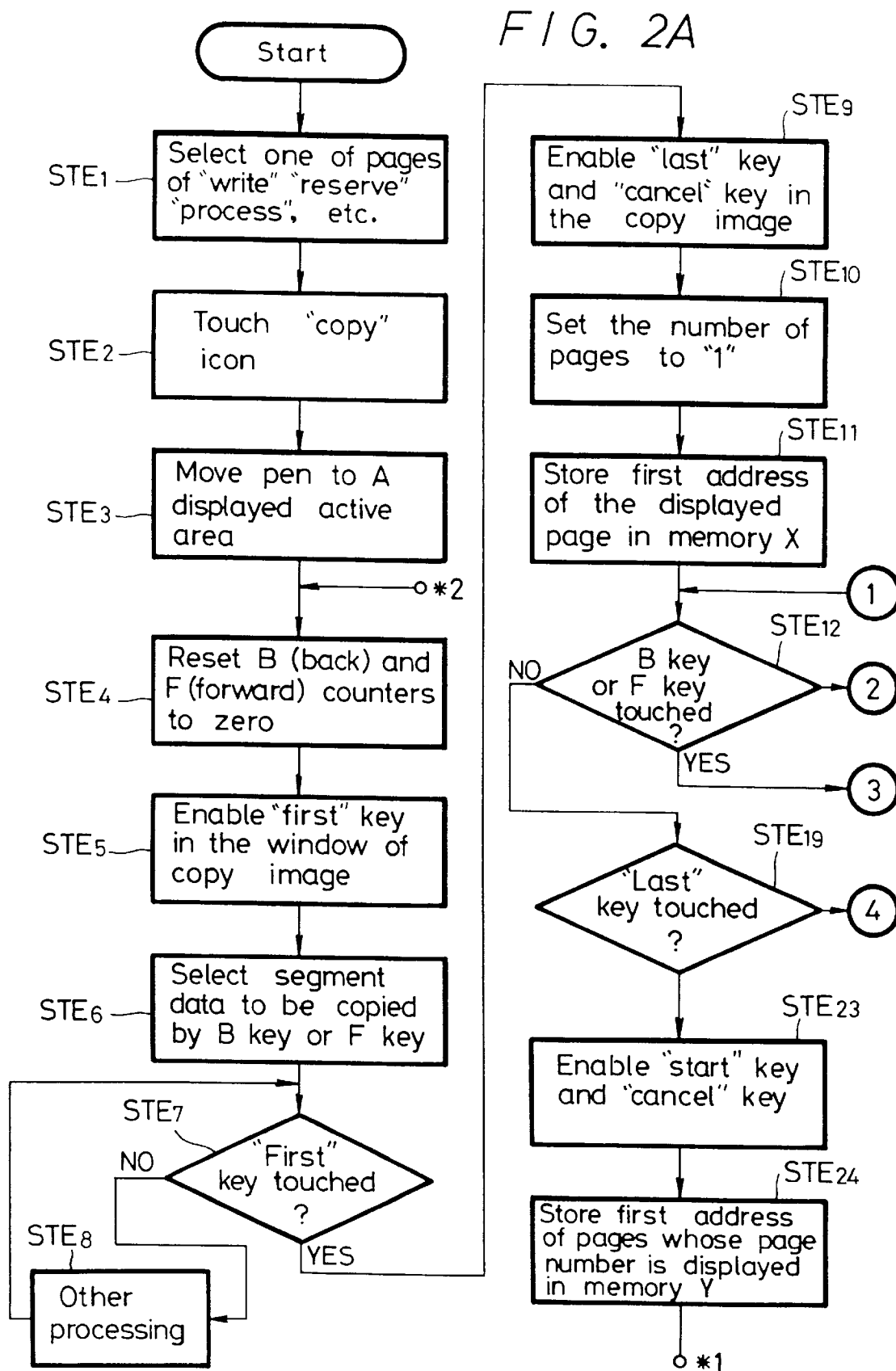


FIG. 1C





Explore Litigation Insights

Docket Alarm provides insights to develop a more informed litigation strategy and the peace of mind of knowing you're on top of things.

Real-Time Litigation Alerts



Keep your litigation team up-to-date with **real-time alerts** and advanced team management tools built for the enterprise, all while greatly reducing PACER spend.

Our comprehensive service means we can handle Federal, State, and Administrative courts across the country.

Advanced Docket Research



With over 230 million records, Docket Alarm's cloud-native docket research platform finds what other services can't. Coverage includes Federal, State, plus PTAB, TTAB, ITC and NLRB decisions, all in one place.

Identify arguments that have been successful in the past with full text, pinpoint searching. Link to case law cited within any court document via Fastcase.

Analytics At Your Fingertips



Learn what happened the last time a particular judge, opposing counsel or company faced cases similar to yours.

Advanced out-of-the-box PTAB and TTAB analytics are always at your fingertips.

API

Docket Alarm offers a powerful API (application programming interface) to developers that want to integrate case filings into their apps.

LAW FIRMS

Build custom dashboards for your attorneys and clients with live data direct from the court.

Automate many repetitive legal tasks like conflict checks, document management, and marketing.

FINANCIAL INSTITUTIONS

Litigation and bankruptcy checks for companies and debtors.

E-DISCOVERY AND LEGAL VENDORS

Sync your system to PACER to automate legal marketing.