



US008749251B2

(12) **United States Patent**
Philipp et al.

(10) **Patent No.:** **US 8,749,251 B2**
(45) **Date of Patent:** **Jun. 10, 2014**

(54) **PROXIMITY SENSOR**
(75) Inventors: **Harald Philipp**, Zug (CH); **Kevin Snoad**, Chicester (GB)
(73) Assignee: **Atmel Corporation**, San Jose, CA (US)
(*) Notice: Subject to any disclaimer, the term of this patent is extended or adjusted under 35 U.S.C. 154(b) by 569 days.
(21) Appl. No.: **13/116,764**
(22) Filed: **May 26, 2011**

6,452,514 B1 9/2002 Philipp
6,466,036 B1 10/2002 Philipp
7,091,727 B2 8/2006 Lee
7,245,131 B2* 7/2007 Kurachi et al. 324/663
7,567,088 B2 7/2009 Yoshida
7,663,607 B2 2/2010 Hotelling
7,714,595 B2 5/2010 Fujiwara
7,797,115 B2 9/2010 Tasher
7,875,814 B2 1/2011 Chen
7,920,129 B2 4/2011 Hotelling
8,031,094 B2 10/2011 Hotelling
8,031,174 B2 10/2011 Hamblin
8,040,326 B2 10/2011 Hotelling
8,049,732 B2 11/2011 Hotelling
8,179,381 B2 5/2012 Frey
2003/0132763 A1 7/2003 Ellenz
2006/0170411 A1* 8/2006 Kurachi et al. 324/132

(65) **Prior Publication Data**

US 2011/0242051 A1 Oct. 6, 2011

Related U.S. Application Data

(63) Continuation of application No. 12/179,769, filed on Jul. 25, 2008, now Pat. No. 7,952,366.
(60) Provisional application No. 60/952,053, filed on Jul. 26, 2007.

(51) **Int. Cl.**
G01R 27/26 (2006.01)
G08B 13/08 (2006.01)

(52) **U.S. Cl.**
USPC 324/663; 340/545.4

(58) **Field of Classification Search**
USPC 324/663, 658, 649, 600; 702/57;
340/545.4, 545.2, 545.1, 541, 540;
381/74

See application file for complete search history.

(56) **References Cited**

U.S. PATENT DOCUMENTS

5,730,165 A 3/1998 Philipp
6,452,494 B1 9/2002 Harrison

(Continued)

FOREIGN PATENT DOCUMENTS

EP 1536314 A2 6/2005
GB 2431725 A1 5/2007
WO WO 2012/129247 9/2012

OTHER PUBLICATIONS

U.S. Appl. No. 61/454,936, filed Mar. 21, 2011, Myers.

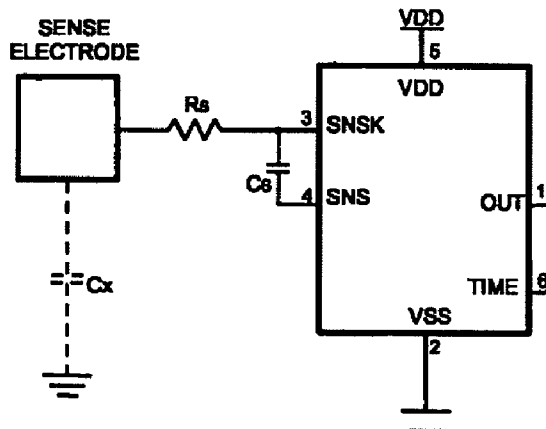
(Continued)

Primary Examiner — Hoai-An D Nguyen
(74) *Attorney, Agent, or Firm* — Baker Botts LLP

(57) **ABSTRACT**

In one embodiment, a method includes monitoring detection by a sensing element of a key touch on a touch screen; determining an amount of time that has elapsed since the sensing element last detected a change of capacitance indicative of a key touch on the touch screen; and, if the amount of time that has elapsed exceeds a predetermined time duration, then initiating a particular function of an apparatus.

20 Claims, 10 Drawing Sheets



(56)

References Cited

2012/0243719 A1 9/2012 Franklin

U.S. PATENT DOCUMENTS

2006/0250142 A1 11/2006 Abe
2007/0062739 A1 3/2007 Philipp
2007/0076897 A1 4/2007 Philipp
2008/0047764 A1* 2/2008 Lee et al. 178/18.06
2008/0147350 A1* 6/2008 Jean 702/150
2008/0246723 A1* 10/2008 Baumbach 345/156
2009/0027068 A1 1/2009 Philipp
2009/0225044 A1* 9/2009 Jeon et al. 345/173
2009/0315854 A1 12/2009 Matsuo
2012/0242588 A1 9/2012 Myers
2012/0242592 A1 9/2012 Rothkopf
2012/0243151 A1 9/2012 Lynch

OTHER PUBLICATIONS

U.S. Appl. No. 61/454,950, filed Mar. 21, 2011, Lynch.
U.S. Appl. No. 61/454,894, filed Mar. 21, 2011, Rothkopf.
UK Intellectual Property Office, Search Report for GB 0813682.2,
Nov. 4, 2008.
Datasheet "QT100-Charge Transfer IC," Quantum Research Group,
2006.
Datasheet "QT110-Touch Sensor IC," Quantum Research Group,
2004.

* cited by examiner

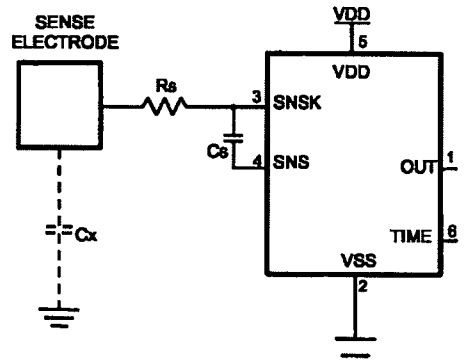


Fig. 1

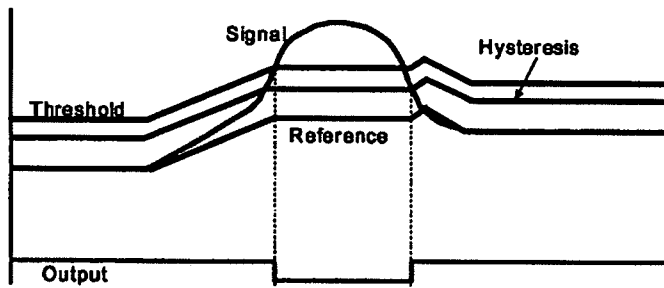


Fig. 2

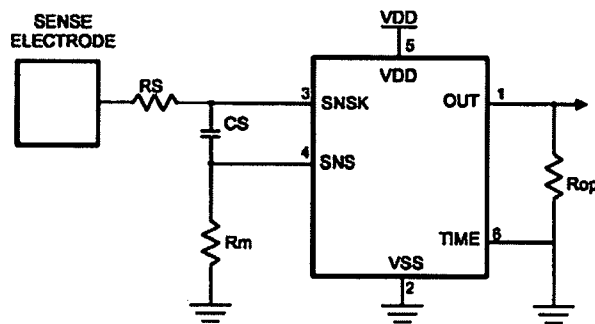


Fig. 3

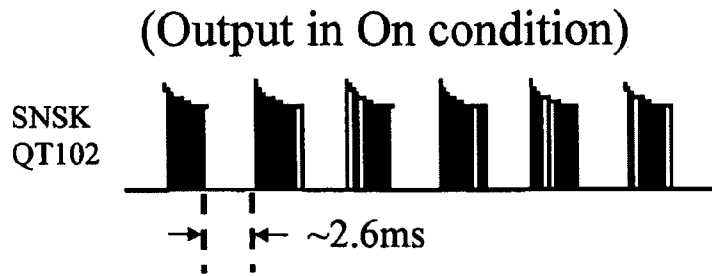


Fig. 4

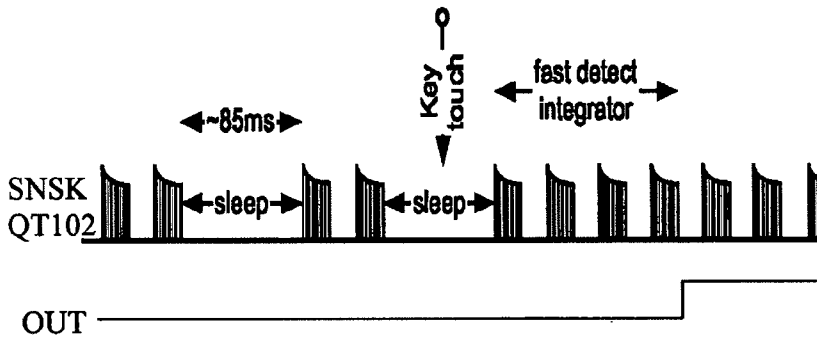


Fig. 5

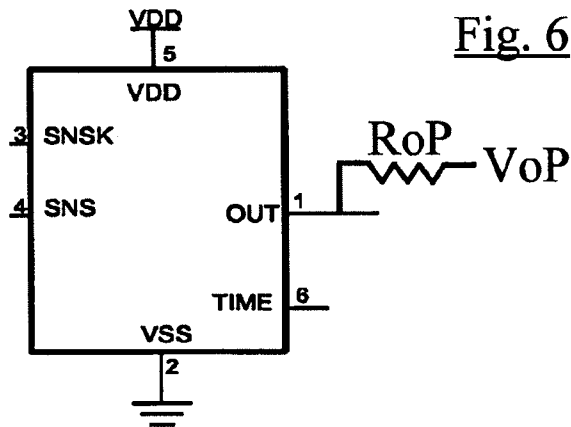


Fig. 6

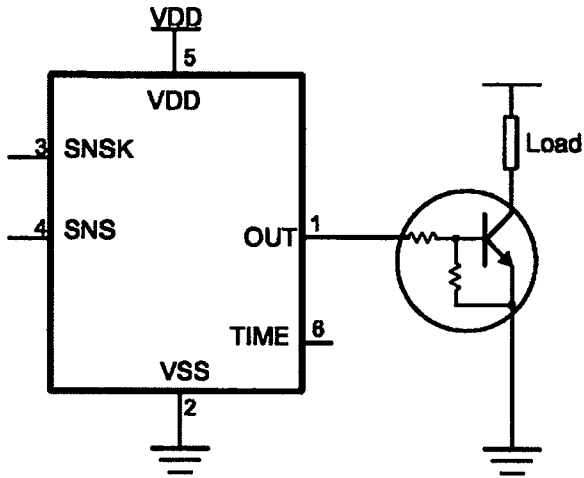


Fig. 7

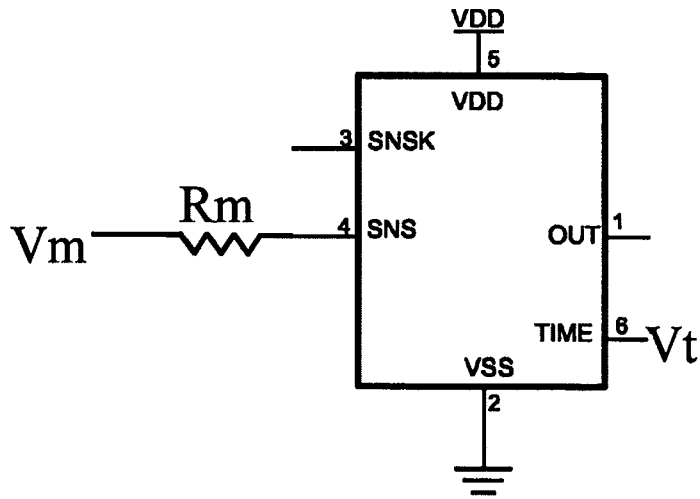


Fig. 8

Explore Litigation Insights

Docket Alarm provides insights to develop a more informed litigation strategy and the peace of mind of knowing you're on top of things.

Real-Time Litigation Alerts



Keep your litigation team up-to-date with **real-time alerts** and advanced team management tools built for the enterprise, all while greatly reducing PACER spend.

Our comprehensive service means we can handle Federal, State, and Administrative courts across the country.

Advanced Docket Research



With over 230 million records, Docket Alarm's cloud-native docket research platform finds what other services can't. Coverage includes Federal, State, plus PTAB, TTAB, ITC and NLRB decisions, all in one place.

Identify arguments that have been successful in the past with full text, pinpoint searching. Link to case law cited within any court document via Fastcase.

Analytics At Your Fingertips



Learn what happened the last time a particular judge, opposing counsel or company faced cases similar to yours.

Advanced out-of-the-box PTAB and TTAB analytics are always at your fingertips.

API

Docket Alarm offers a powerful API (application programming interface) to developers that want to integrate case filings into their apps.

LAW FIRMS

Build custom dashboards for your attorneys and clients with live data direct from the court.

Automate many repetitive legal tasks like conflict checks, document management, and marketing.

FINANCIAL INSTITUTIONS

Litigation and bankruptcy checks for companies and debtors.

E-DISCOVERY AND LEGAL VENDORS

Sync your system to PACER to automate legal marketing.