



US006293915B1

(12) **United States Patent**
Amano et al.

(10) **Patent No.:** **US 6,293,915 B1**
(45) **Date of Patent:** ***Sep. 25, 2001**

(54) **PULSE WAVE EXAMINATION APPARATUS, BLOOD PRESSURE MONITOR, PULSE WAVEFORM MONITOR, AND PHARMACOLOGICAL ACTION MONITOR**

(75) Inventors: **Kazuhiko Amano; Kazuo Uebaba**, both of Yokohama; **Hitoshi Ishiyama**, Toride; **Hiroshi Kasahara**, Kashiwa, all of (JP)

(73) Assignee: **Seiko Epson Corporation**, Tokyo (JP)

(*) Notice: This patent issued on a continued prosecution application filed under 37 CFR 1.53(d), and is subject to the twenty year patent term provisions of 35 U.S.C. 154(a)(2).

Subject to any disclaimer, the term of this patent is extended or adjusted under 35 U.S.C. 154(b) by 0 days.

(21) Appl. No.: **09/341,787**

(22) PCT Filed: **Nov. 20, 1998**

(86) PCT No.: **PCT/JP98/05259**

§ 371 Date: **Jul. 16, 1999**

§ 102(e) Date: **Jul. 16, 1999**

(87) PCT Pub. No.: **WO99/26529**

PCT Pub. Date: **Jun. 3, 1999**

(30) **Foreign Application Priority Data**

Nov. 20, 1997 (JP) 9-320149
Nov. 21, 1997 (JP) 9-321768
Jul. 12, 1998 (JP) 10-213494

(51) **Int. Cl.⁷** **A61B 5/02**

(52) **U.S. Cl.** **600/501; 600/500; 600/485**

(58) **Field of Search** **600/500, 501, 600/485, 486, 502**

(56) **References Cited**

U.S. PATENT DOCUMENTS

5,623,933 * 4/1997 Amano et al. 600/500
5,755,229 * 5/1998 Amano et al. 600/500

FOREIGN PATENT DOCUMENTS

0 638 281 A1 2/1995 (EP) .
59-189830 10/1984 (JP) .
4-250132 9/1992 (JP) .
8-257000 10/1996 (JP) .
8-289876 11/1996 (JP) .
9-135819 5/1997 (JP) .
139440 8/1990 (TW) .
WO96 35368 11/1996 (WO) .

OTHER PUBLICATIONS

“Medical Diagnostics, vol. 1 (in Japanese)”, supervised by Akira Shibata, Mar., 10, 1995, Nishimura Shoten, pp401–409.

“Application of Wavelet Transformation to Wave Pulse of Living Body (in Japanese)”, Preprint of 15th Scientific Lectures on Biomechanism, (Japan), (1994), pp121–124.

* cited by examiner

Primary Examiner—Cary O’Connor

Assistant Examiner—Navin Natnithhadha

(57) **ABSTRACT**

An FFT treating section (40) carries out the frequency analysis of a pulse waveform MHj excluding a body movement component to yield pulse wave analysis data MKD and then a tidal wave-character extracting section (50) and a dirotic wave-character extracting section (60) yield a tidal wave-character data (TWD) and a dirotic wave-character data (DWD) showing the characteristics of a tidal wave and dirotic wave respectively. Then, a pulse condition judging section (70) yields pulse condition data (ZD) on the basis of this data (TWD, DWD) and in succession a notifying section (80) advises of the pulse condition of a subject.

61 Claims, 56 Drawing Sheets

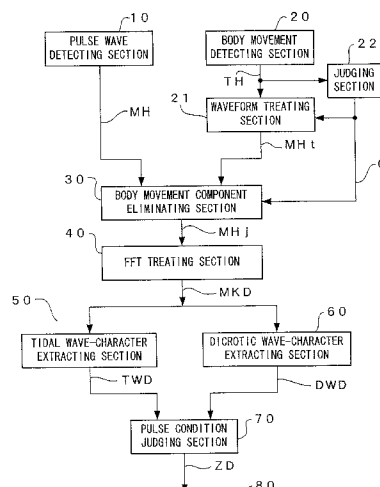


FIG. 1

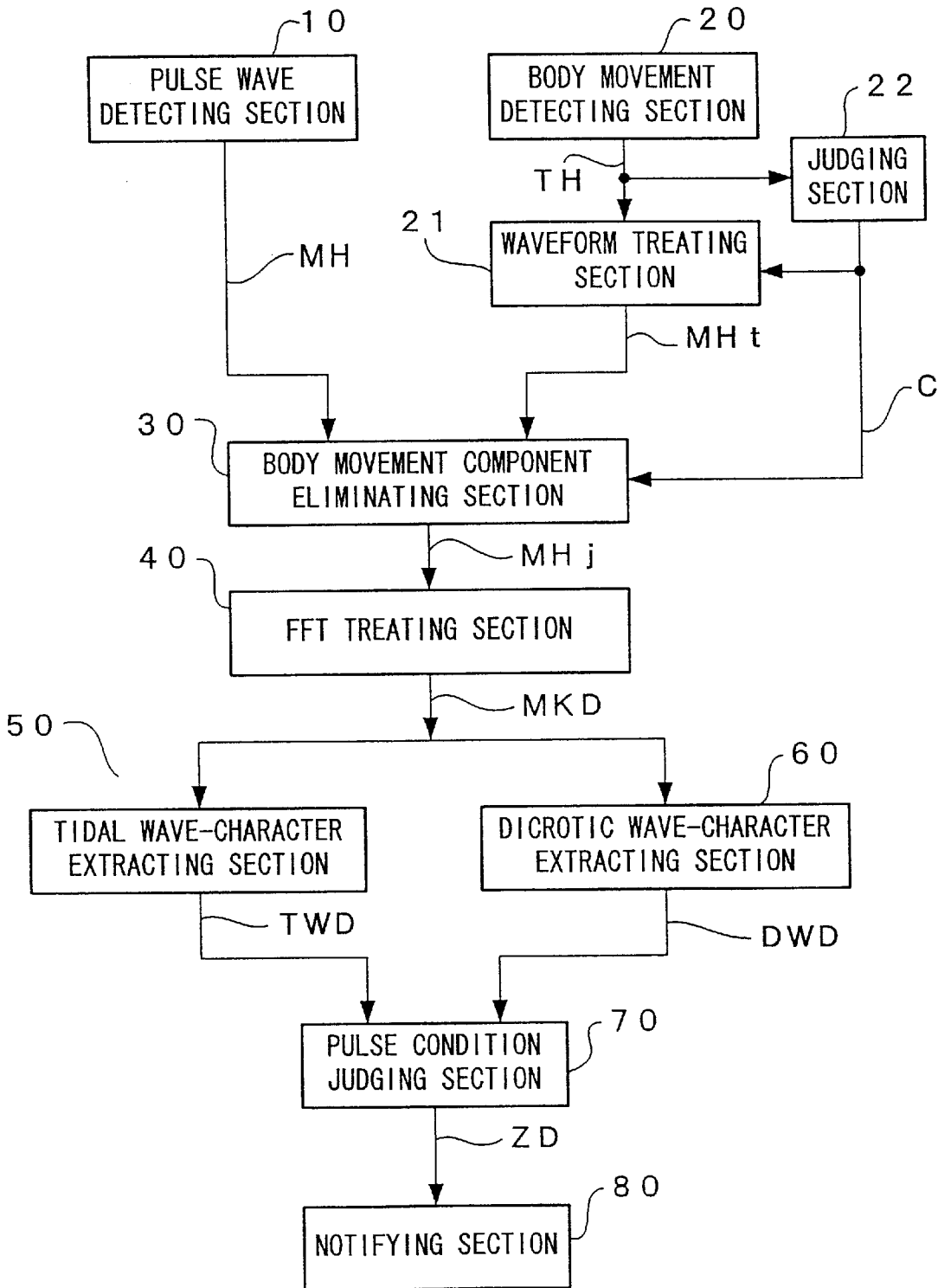


FIG. 2

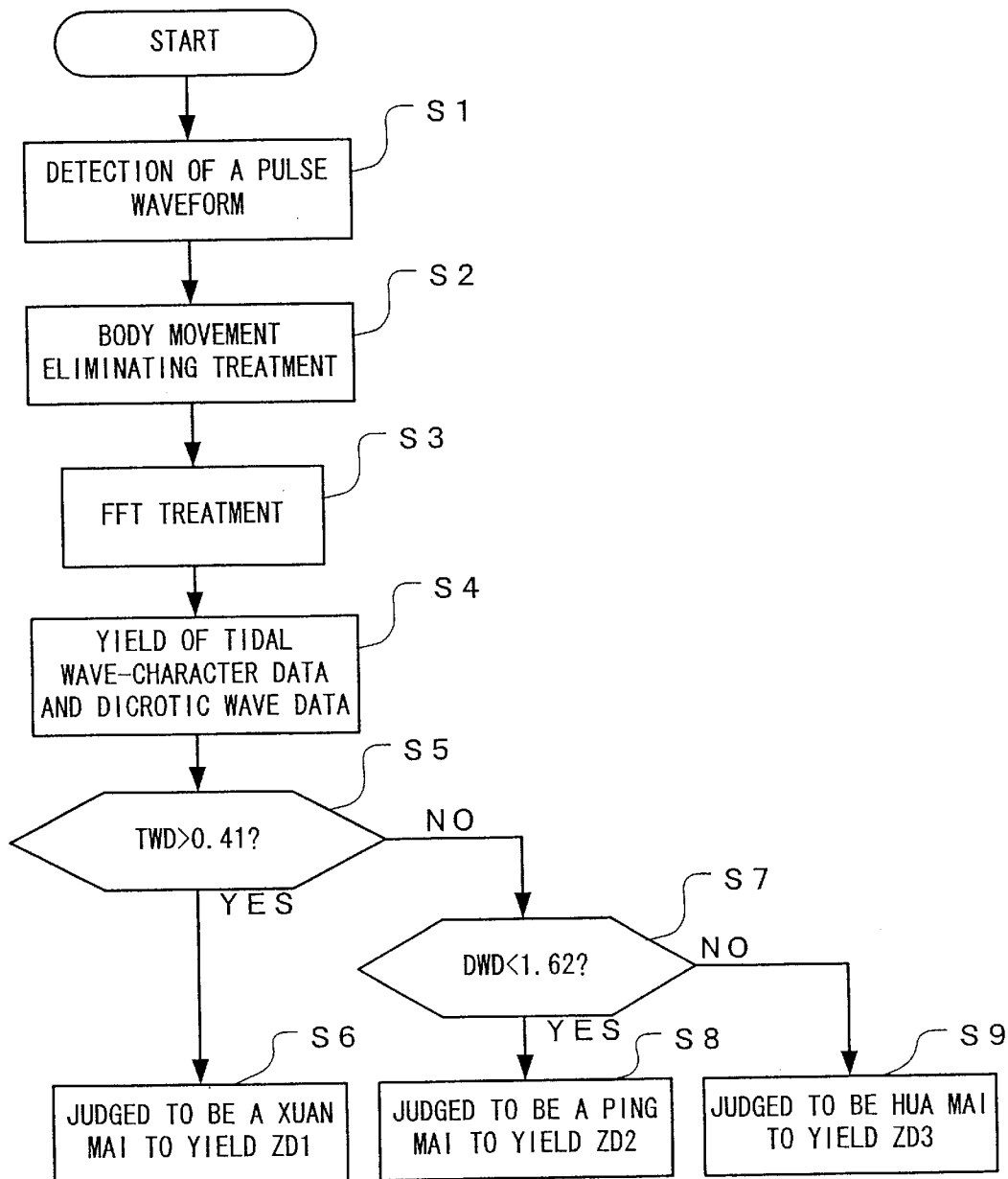
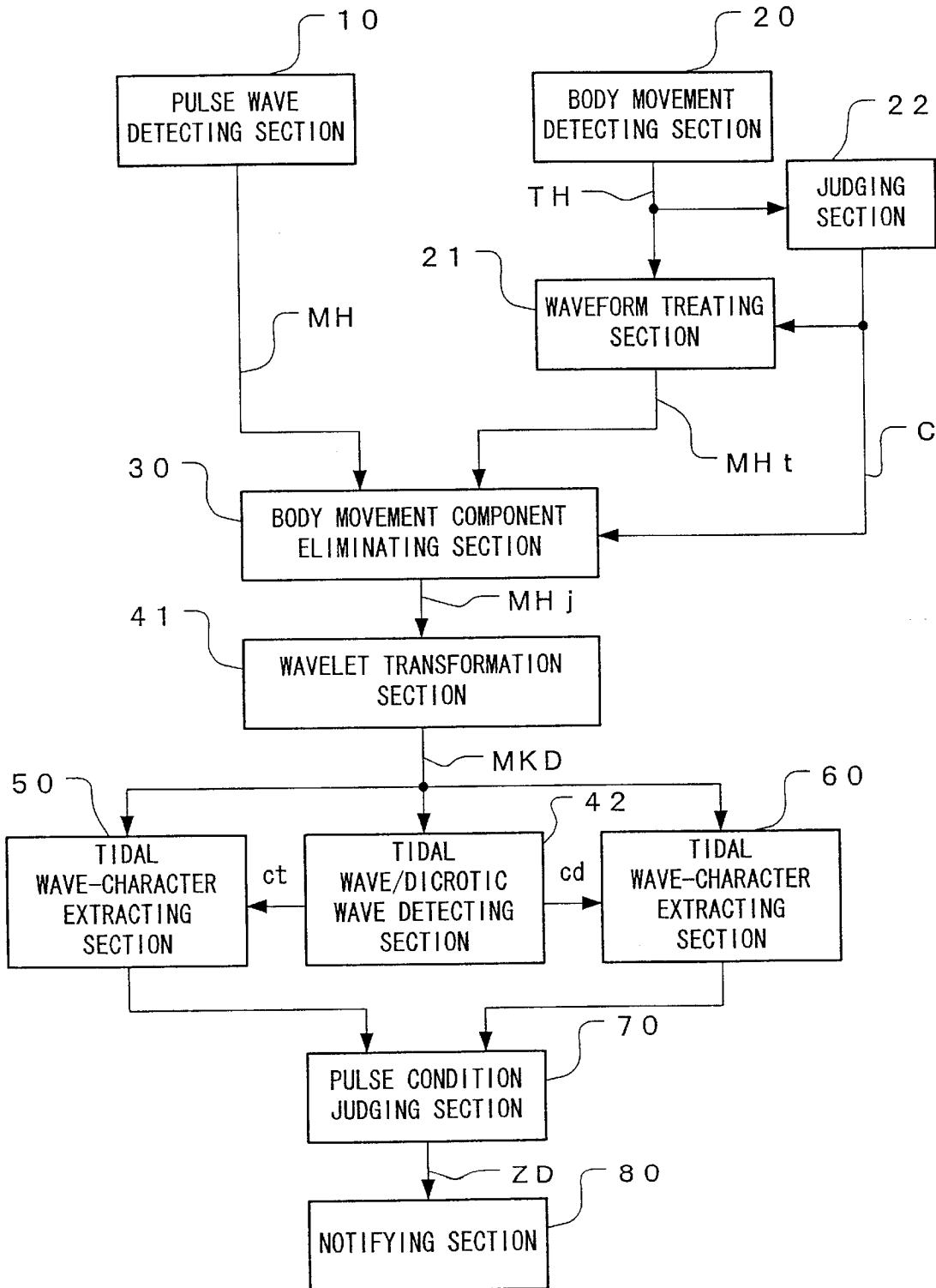


FIG. 3



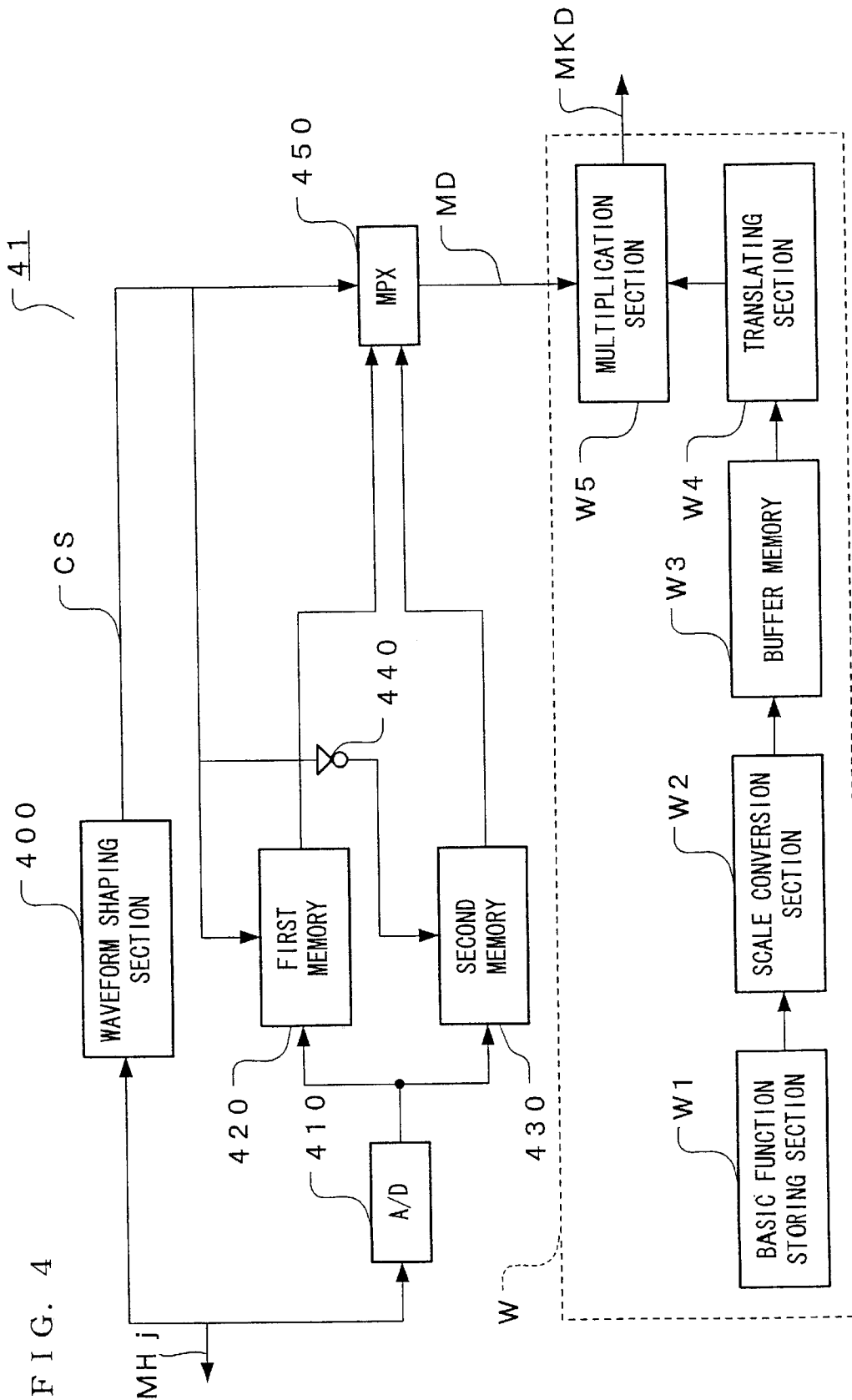


FIG. 4

Explore Litigation Insights

Docket Alarm provides insights to develop a more informed litigation strategy and the peace of mind of knowing you're on top of things.

Real-Time Litigation Alerts



Keep your litigation team up-to-date with **real-time alerts** and advanced team management tools built for the enterprise, all while greatly reducing PACER spend.

Our comprehensive service means we can handle Federal, State, and Administrative courts across the country.

Advanced Docket Research



With over 230 million records, Docket Alarm's cloud-native docket research platform finds what other services can't. Coverage includes Federal, State, plus PTAB, TTAB, ITC and NLRB decisions, all in one place.

Identify arguments that have been successful in the past with full text, pinpoint searching. Link to case law cited within any court document via Fastcase.

Analytics At Your Fingertips



Learn what happened the last time a particular judge, opposing counsel or company faced cases similar to yours.

Advanced out-of-the-box PTAB and TTAB analytics are always at your fingertips.

API

Docket Alarm offers a powerful API (application programming interface) to developers that want to integrate case filings into their apps.

LAW FIRMS

Build custom dashboards for your attorneys and clients with live data direct from the court.

Automate many repetitive legal tasks like conflict checks, document management, and marketing.

FINANCIAL INSTITUTIONS

Litigation and bankruptcy checks for companies and debtors.

E-DISCOVERY AND LEGAL VENDORS

Sync your system to PACER to automate legal marketing.