



US005924979A

United States Patent [19]
Swedlow et al.

[11] **Patent Number:** **5,924,979**
[45] **Date of Patent:** ***Jul. 20, 1999**

[54] **MEDICAL DIAGNOSTIC APPARATUS WITH SLEEP MODE**

[75] Inventors: **David B. Swedlow**, Danville; **Michael J. Bernstein**, San Ramon; **Charles E. Porges**, Orinda; **James E. Luecke**, Dublin; **Michael W. Nootbaar**, Benicia, all of Calif.

[73] Assignee: **Nellcor Puritan Bennett Incorporated**, Pleasanton, Calif.

[*] Notice: This patent is subject to a terminal disclaimer.

[21] Appl. No.: **08/919,540**

[22] Filed: **Aug. 28, 1997**

Related U.S. Application Data

[63] Continuation-in-part of application No. 08/599,255, Feb. 9, 1996, Pat. No. 5,746,697.

[51] **Int. Cl.⁶** **A61B 5/00**

[52] **U.S. Cl.** **600/300; 600/310; 600/323**

[58] **Field of Search** **600/300, 310, 600/322, 323, 324, 326, 333, 336, 483; 607/16**

[56] **References Cited**
U.S. PATENT DOCUMENTS

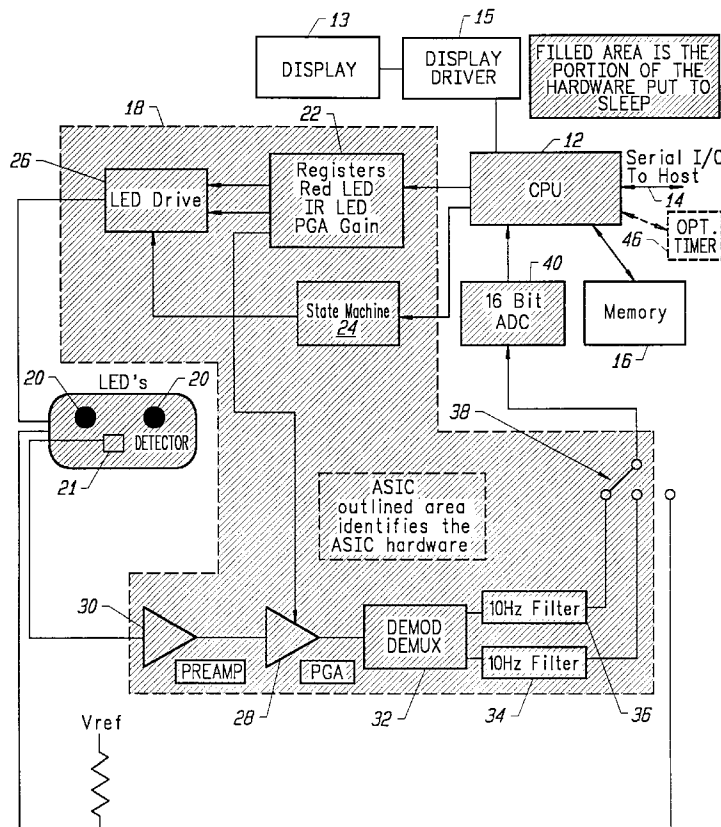
5,238,001	8/1993	Gallant et al.	600/513
5,277,196	1/1994	Hankinson et al.	600/537
5,746,697	5/1998	Swedlow et al.	600/323
5,748,103	5/1998	Flach et al.	600/509

Primary Examiner—Cary O'Connor
Assistant Examiner—Eric F. Winakur
Attorney, Agent, or Firm—Townsend and Townsend and Crew LLP

[57] **ABSTRACT**

A method and apparatus for conserving power in a medical diagnostic apparatus by using a sleep mode during a monitoring state. The sleep mode allows not only the processor to be put to sleep, but other detection circuitry as well. This is accomplished by not relying on detecting events to awaken the sleeping circuitry, but rather establishing the stability of a physiological parameter before going to sleep. The invention monitors a physiological parameter of the patient and enters a sleep mode only after it has been stable for a predetermined period of time. The apparatus is periodically awakened from the sleep mode to take additional measurements and to ascertain that the stability of the physiological parameter has not changed. In one embodiment, the sleep period is chosen to be consistent with the period in which an alarm condition would need to be generated if a patient's condition started to quickly change.

17 Claims, 4 Drawing Sheets



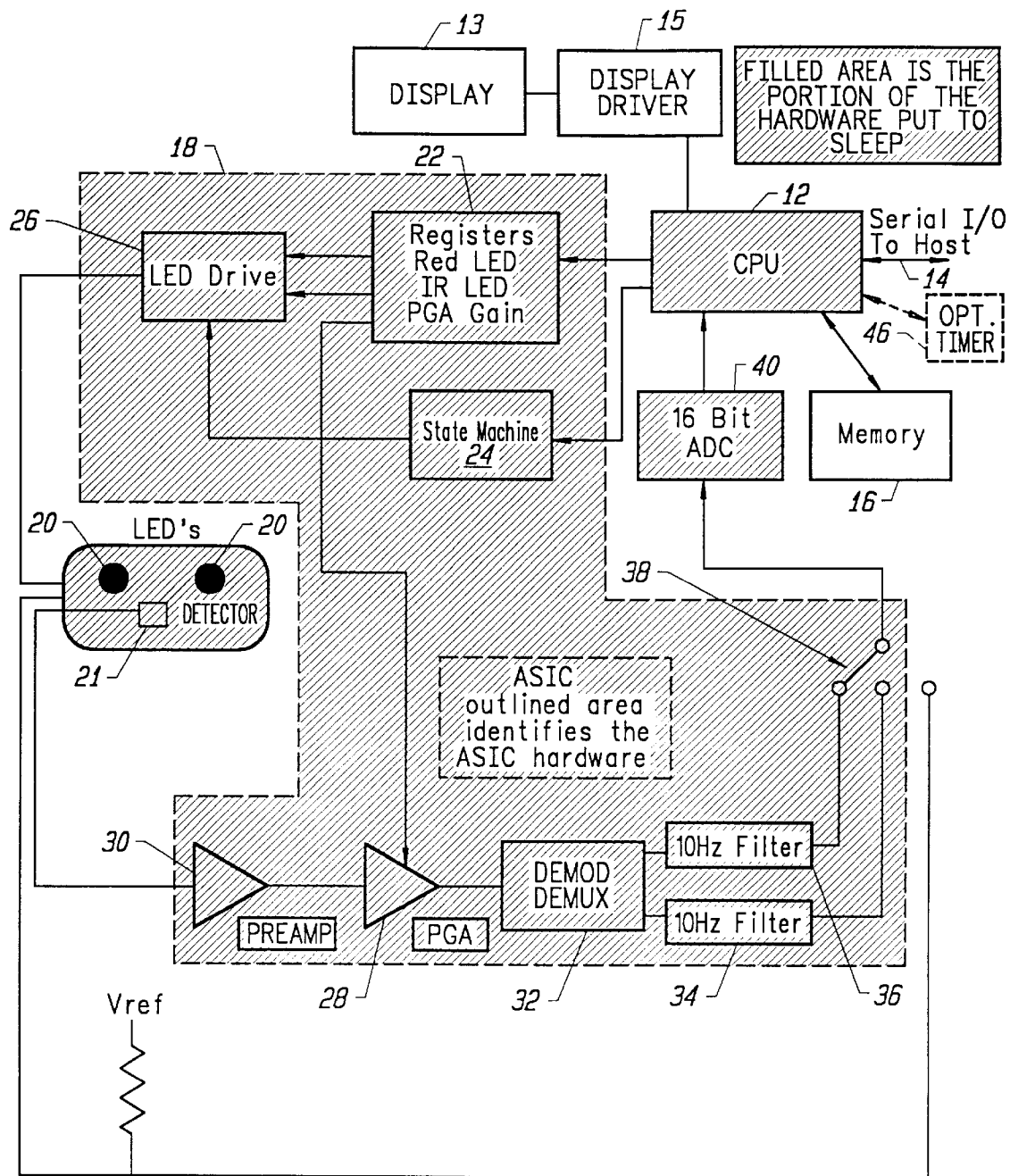


FIG. 1

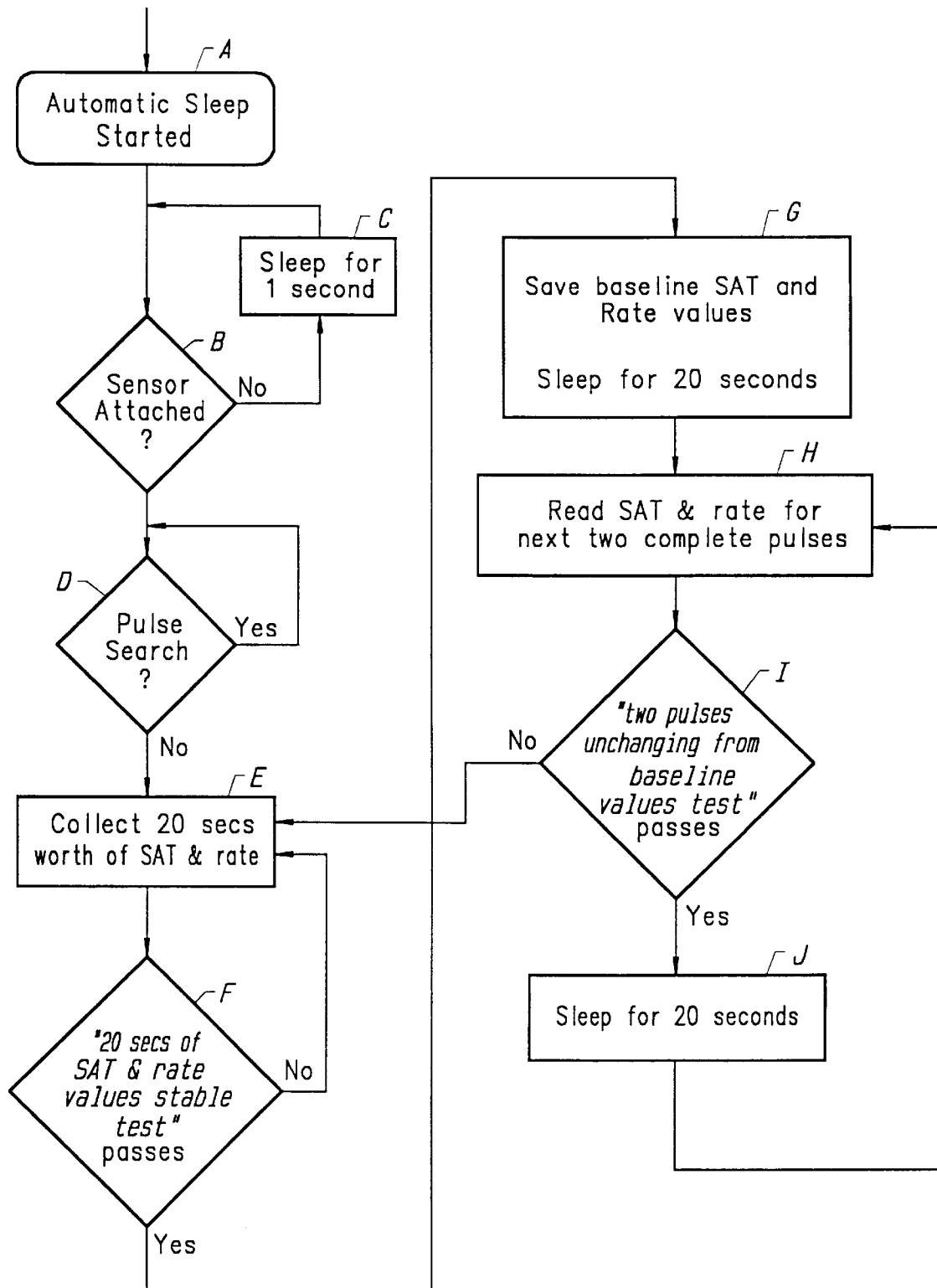


FIG. 2

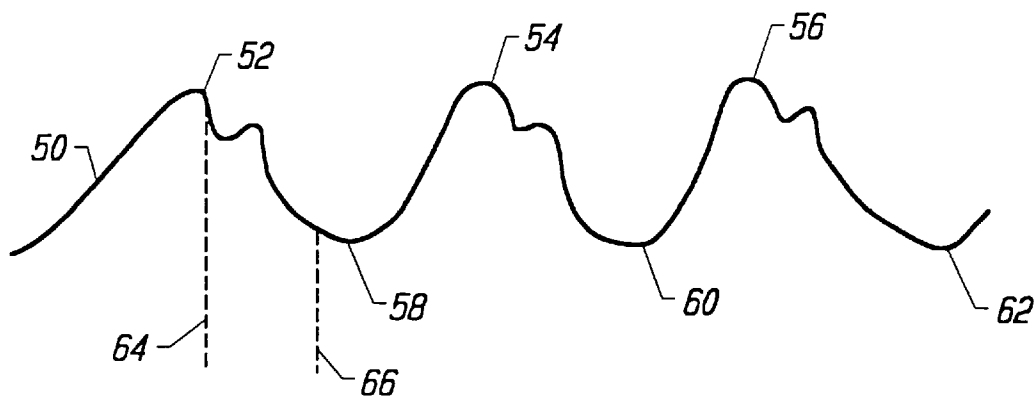


FIG. 3

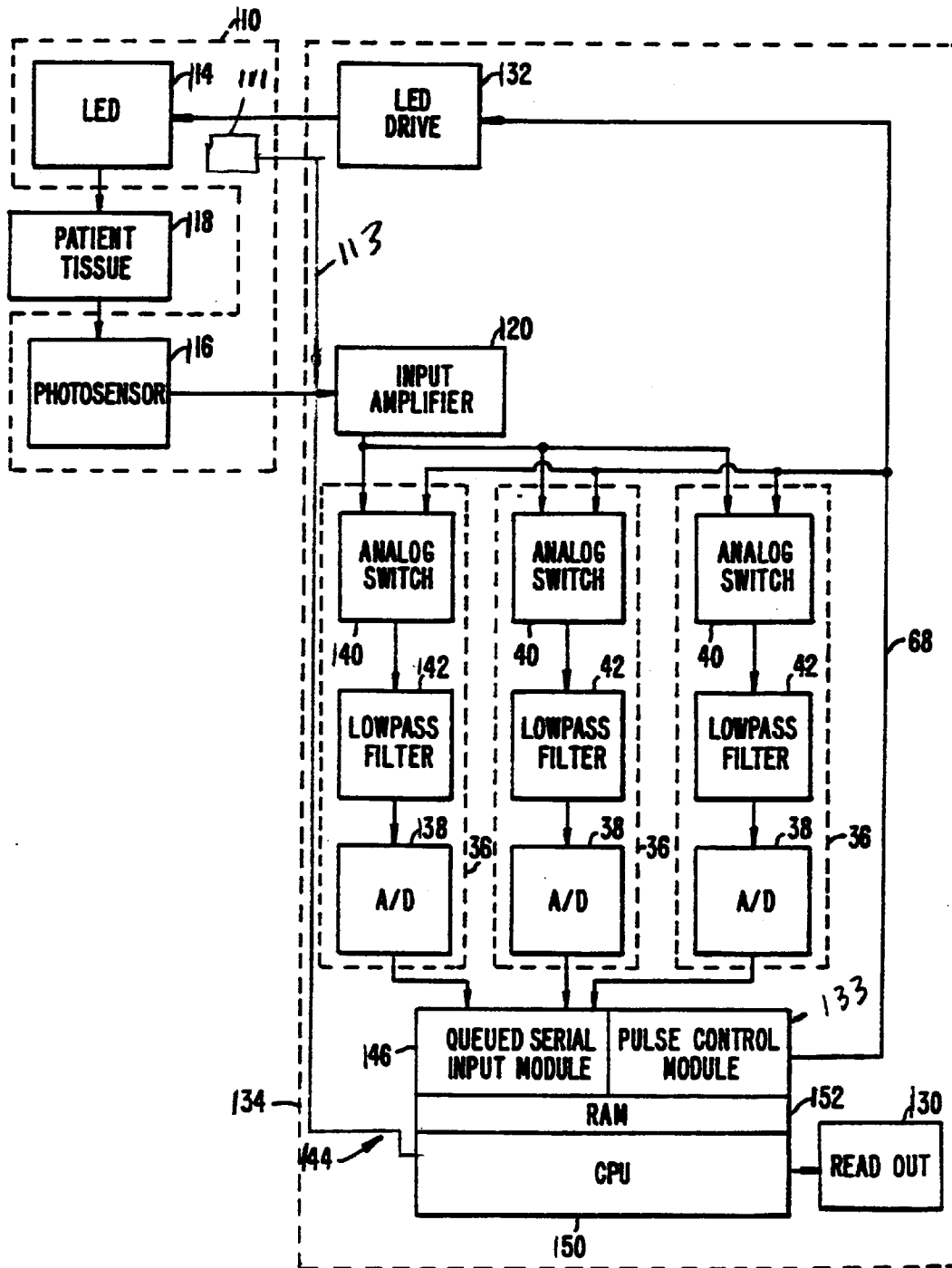


FIG. 4.

Explore Litigation Insights

Docket Alarm provides insights to develop a more informed litigation strategy and the peace of mind of knowing you're on top of things.

Real-Time Litigation Alerts



Keep your litigation team up-to-date with **real-time alerts** and advanced team management tools built for the enterprise, all while greatly reducing PACER spend.

Our comprehensive service means we can handle Federal, State, and Administrative courts across the country.

Advanced Docket Research



With over 230 million records, Docket Alarm's cloud-native docket research platform finds what other services can't. Coverage includes Federal, State, plus PTAB, TTAB, ITC and NLRB decisions, all in one place.

Identify arguments that have been successful in the past with full text, pinpoint searching. Link to case law cited within any court document via Fastcase.

Analytics At Your Fingertips



Learn what happened the last time a particular judge, opposing counsel or company faced cases similar to yours.

Advanced out-of-the-box PTAB and TTAB analytics are always at your fingertips.

API

Docket Alarm offers a powerful API (application programming interface) to developers that want to integrate case filings into their apps.

LAW FIRMS

Build custom dashboards for your attorneys and clients with live data direct from the court.

Automate many repetitive legal tasks like conflict checks, document management, and marketing.

FINANCIAL INSTITUTIONS

Litigation and bankruptcy checks for companies and debtors.

E-DISCOVERY AND LEGAL VENDORS

Sync your system to PACER to automate legal marketing.