



(12) **United States Patent**
Fujioka et al.

(10) **Patent No.:** **US 6,185,149 B1**
(45) **Date of Patent:** **Feb. 6, 2001**

(54) **SEMICONDUCTOR INTEGRATED CIRCUIT MEMORY**

5,808,959 * 9/1998 Kengeri et al. 365/233
5,812,488 * 9/1998 Zagar et al. 365/233
6,094,380 * 7/1998 Kim 365/194

(75) Inventors: **Shinya Fujioka; Masao Taguchi; Yasuharu Sato; Takaaki Suzuki; Tadao Aikawa; Yasuou Matsuzaki; Toshiya Uchida**, all of Kawasaki (JP)

FOREIGN PATENT DOCUMENTS

0 778 575 A2 6/1997 (EP) .

OTHER PUBLICATIONS

International Publication No. WO 98/19248, published May 7, 1998.

(73) Assignee: **Fujitsu Limited**, Kawasaki (JP)

* cited by examiner

(*) Notice: Under 35 U.S.C. 154(b), the term of this patent shall be extended for 0 days.

Primary Examiner—Richard Elms
Assistant Examiner—Hien Nguyen

(21) Appl. No.: **09/340,147**

(74) *Attorney, Agent, or Firm*—Arent Fox Kitner Plotkin & Kahn PLLC

(22) Filed: **Jun. 28, 1999**

(30) **Foreign Application Priority Data**

(57) **ABSTRACT**

Jun. 30, 1998 (JP) 10-185097

A semiconductor memory includes memory cell blocks, a burst-length information generating circuit which generates burst-length information based on a burst length, and a block enable circuit which receives the burst-length information. The block enable circuit selectively enables one of the memory cell blocks when the burst length is equal to or shorter than a predetermined burst length and selectively enables a plurality of memory cell blocks based on the burst length when the burst length is longer than the predetermined burst length. Data are read from the above-mentioned one or plurality of memory cell blocks.

(51) **Int. Cl.⁷** **G11C 8/00**

(52) **U.S. Cl.** **365/233; 365/230.03; 365/238.5**

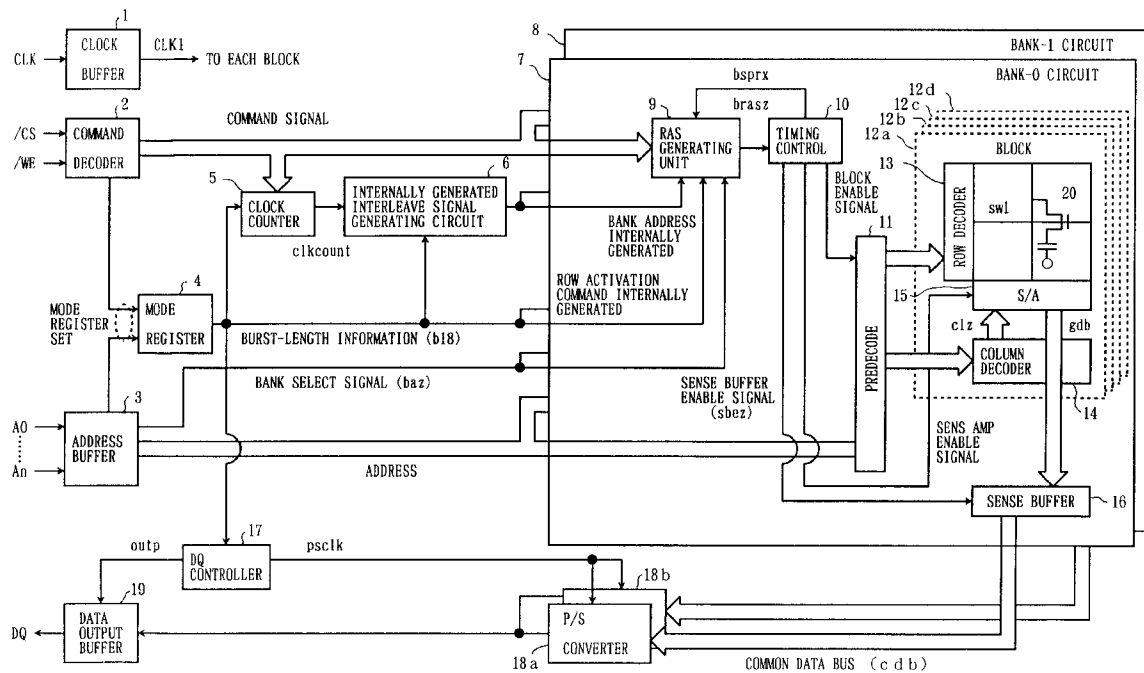
(58) **Field of Search** **365/233, 220, 365/203, 238.5, 221, 239, 230.03**

(56) **References Cited**

U.S. PATENT DOCUMENTS

5,386,385 1/1995 Stephens, Jr. 365/189.05
5,647,287 7/1997 McLaury et al. 365/230.01
5,703,828 12/1997 Park et al. 365/230.03
5,781,499 * 7/1998 Kohikawa 365/233

16 Claims, 20 Drawing Sheets



Qualcomm Incorporated

FIG. 1

PRIOR ART

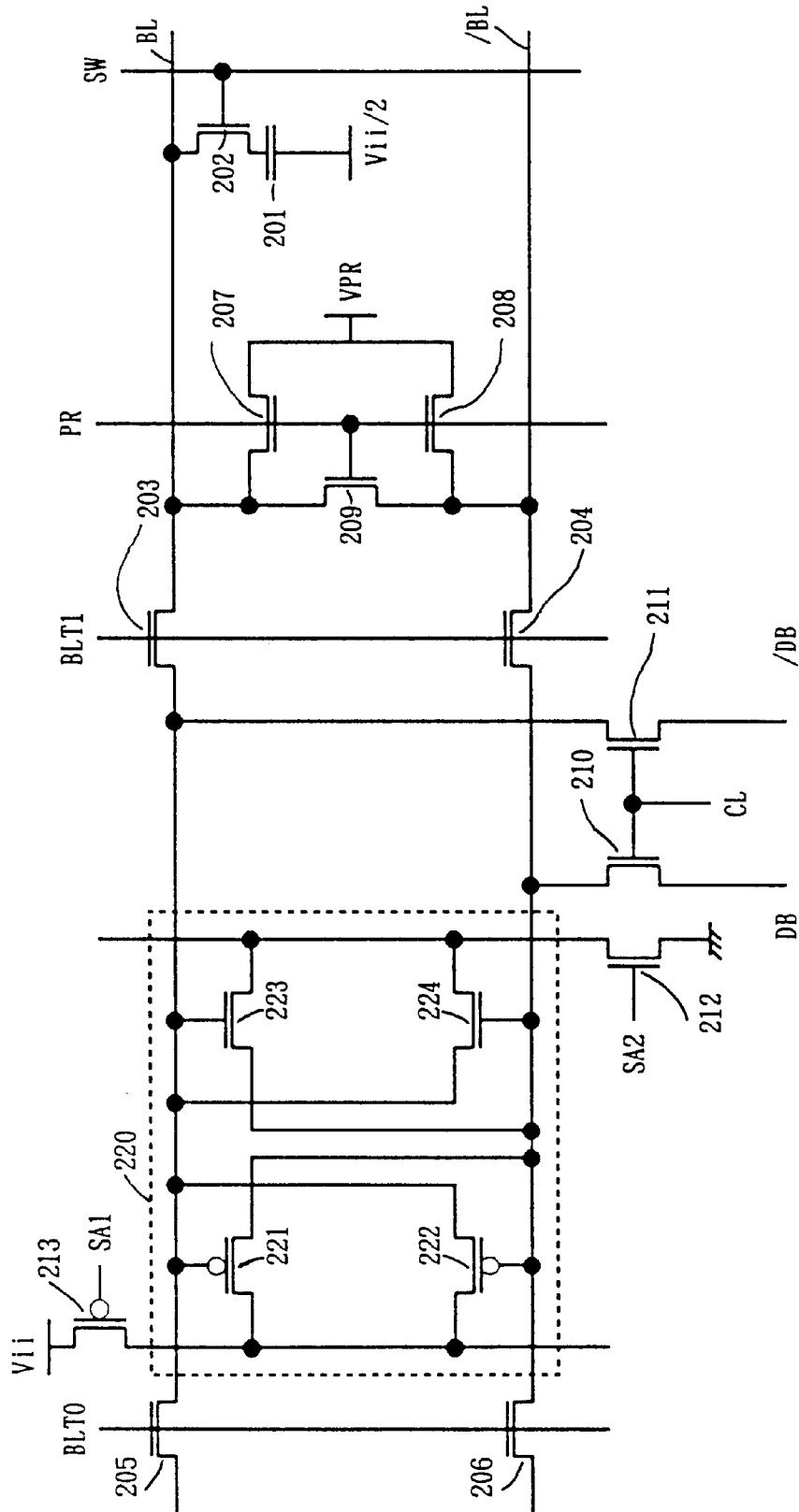


FIG. 2

PRIOR ART

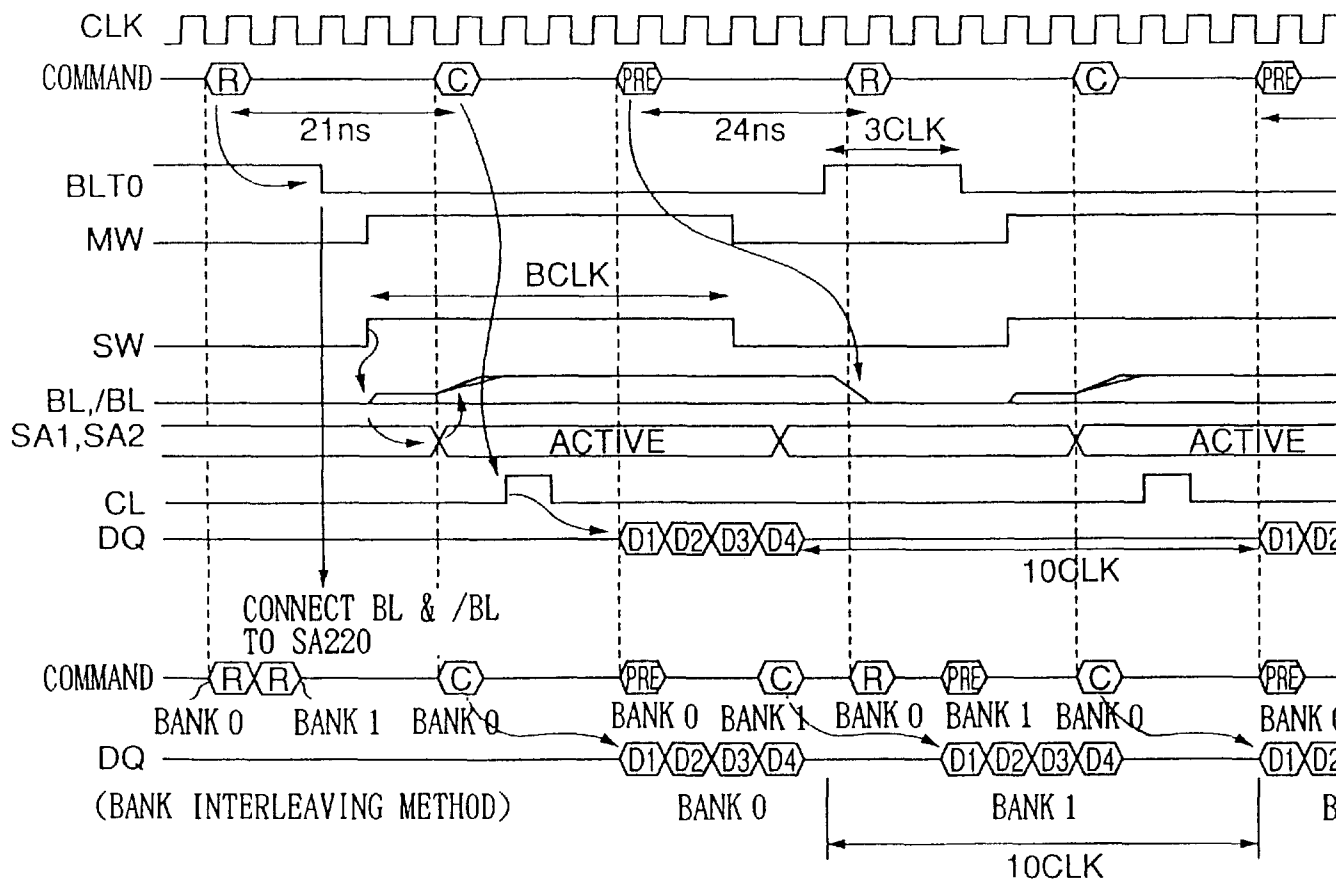


FIG. 3

PRIOR ART

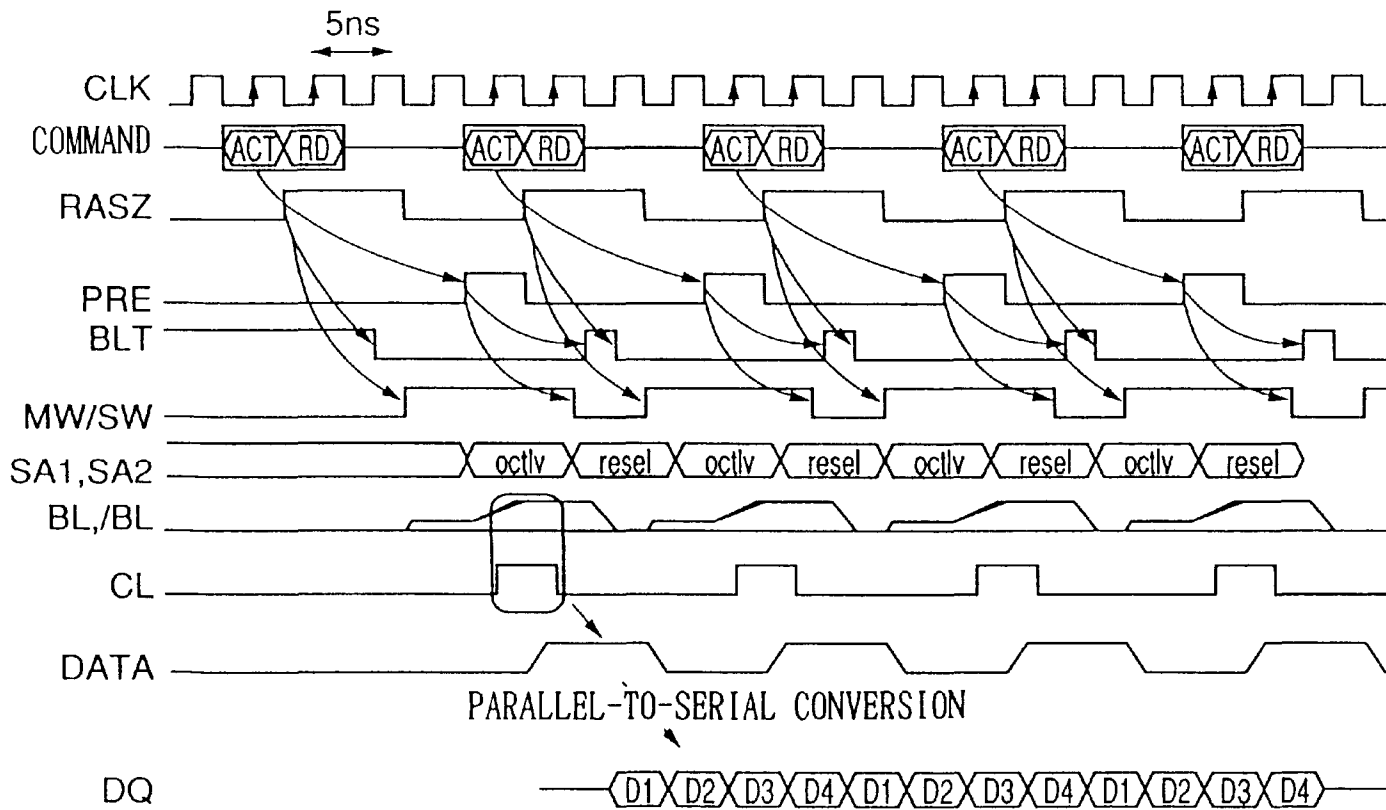
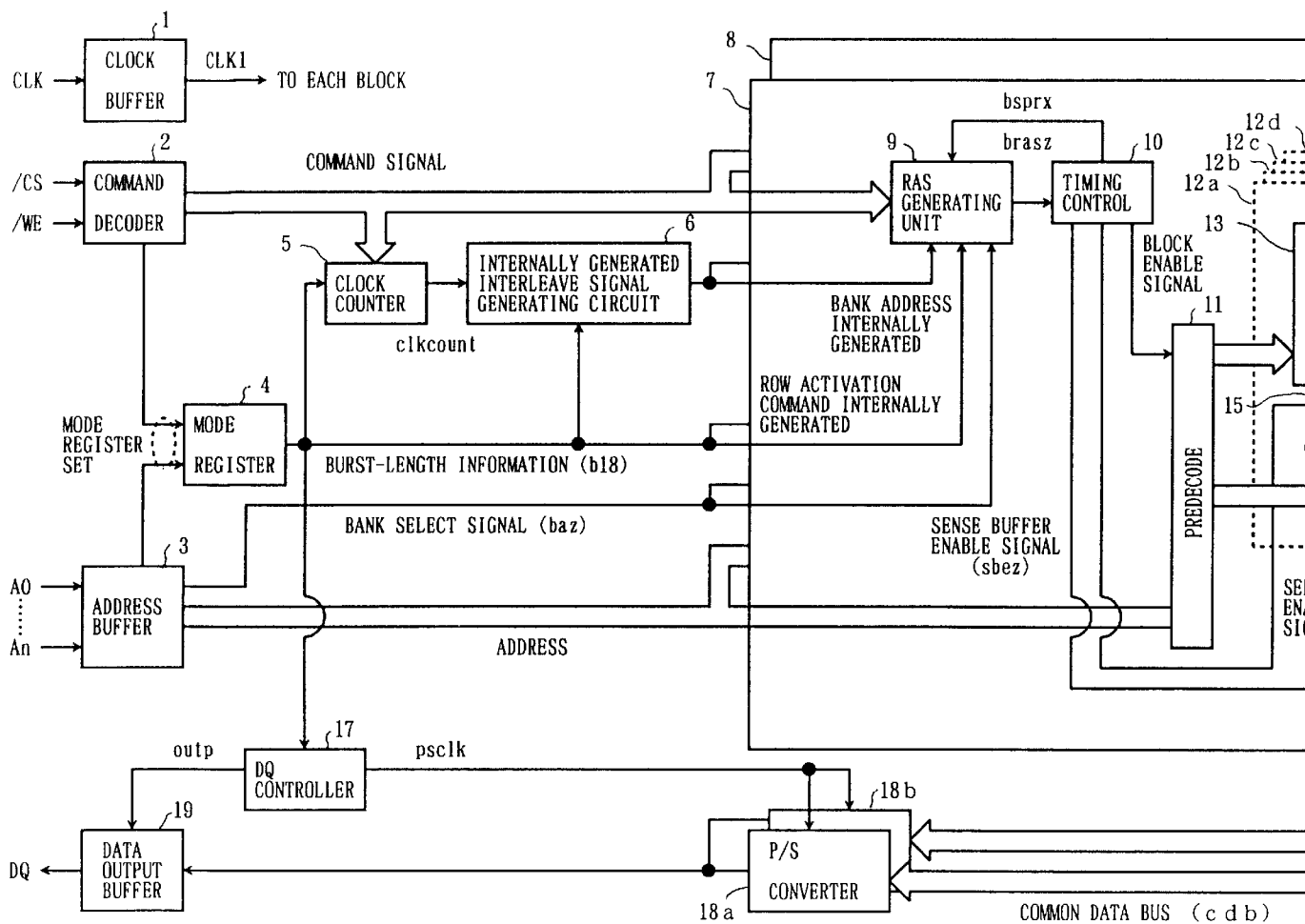


FIG. 4



Explore Litigation Insights

Docket Alarm provides insights to develop a more informed litigation strategy and the peace of mind of knowing you're on top of things.

Real-Time Litigation Alerts



Keep your litigation team up-to-date with **real-time alerts** and advanced team management tools built for the enterprise, all while greatly reducing PACER spend.

Our comprehensive service means we can handle Federal, State, and Administrative courts across the country.

Advanced Docket Research



With over 230 million records, Docket Alarm's cloud-native docket research platform finds what other services can't. Coverage includes Federal, State, plus PTAB, TTAB, ITC and NLRB decisions, all in one place.

Identify arguments that have been successful in the past with full text, pinpoint searching. Link to case law cited within any court document via Fastcase.

Analytics At Your Fingertips



Learn what happened the last time a particular judge, opposing counsel or company faced cases similar to yours.

Advanced out-of-the-box PTAB and TTAB analytics are always at your fingertips.

API

Docket Alarm offers a powerful API (application programming interface) to developers that want to integrate case filings into their apps.

LAW FIRMS

Build custom dashboards for your attorneys and clients with live data direct from the court.

Automate many repetitive legal tasks like conflict checks, document management, and marketing.

FINANCIAL INSTITUTIONS

Litigation and bankruptcy checks for companies and debtors.

E-DISCOVERY AND LEGAL VENDORS

Sync your system to PACER to automate legal marketing.