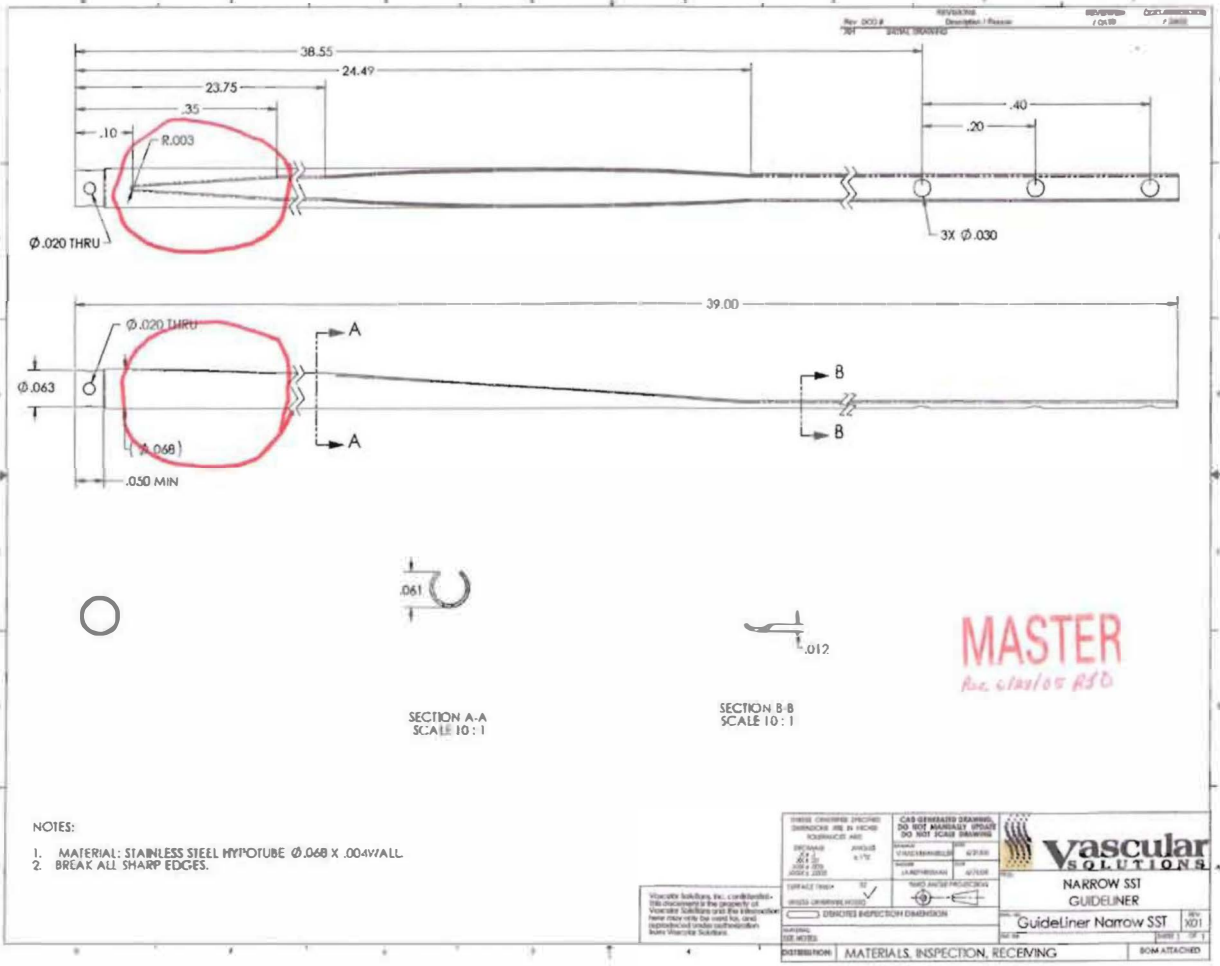


Exhibit 1116



- NOTES:
1. MATERIAL: STAINLESS STEEL HYPOTUBE 0.068 X .004 WALL
 2. BREAK ALL SHARP EDGES.

| | | |
|---|--|---|
| THREE DIMENSIONAL SPECIFIED DIMENSIONS ARE IN INCHES UNLESS OTHERWISE NOTED | CAD GENERATED DRAWING DO NOT MANUALLY DIMENSION DO NOT SCALE DRAWING | vascular SOLUTIONS |
| DATE: 02/14/10 REV: 001 DESIGNED BY: [redacted] DRAWN BY: [redacted] | CHECKED BY: [redacted] APPROVED BY: [redacted] | |
| VASCULAR SOLUTIONS, INC. IS A REGISTERED SERVICE PROVIDER OF THE STATE OF CALIFORNIA. VASCULAR SOLUTIONS, INC. IS NOT A MEDICAL DEVICE MANUFACTURER. VASCULAR SOLUTIONS, INC. IS NOT A MEDICAL DEVICE MANUFACTURER. | | NARROW SST GUIDELINER GuidelineR Narrow SST REV: 001 DATE: 02/14/10 |
| DISTRIBUTION: MATERIALS, INSPECTION, RECEIVING | | BOM ATTACHED |