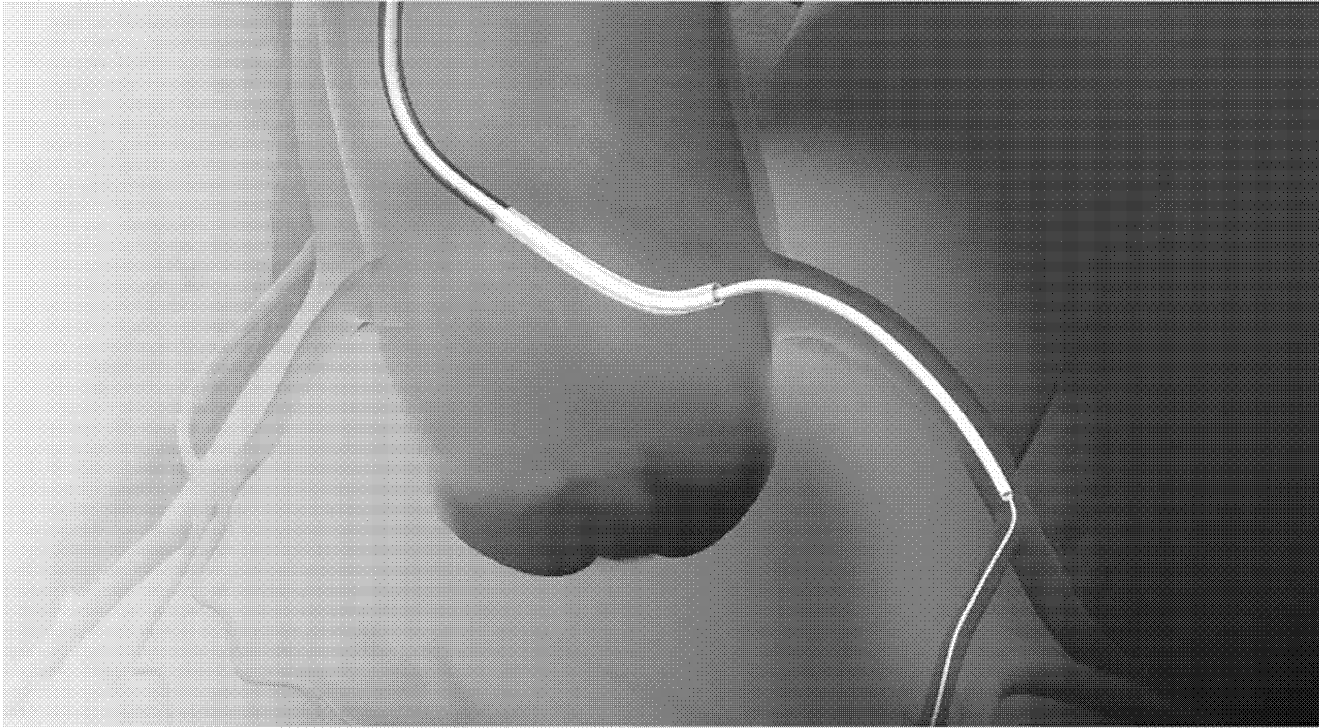


# Guideline<sup>®</sup>

V2 Catheter

Rapid exchange guide extension  
Now with flexible all-polymer collar

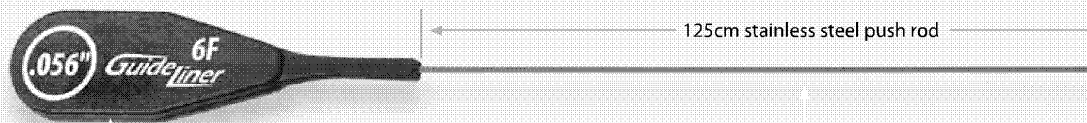


 **vascular**  
SOLUTIONS

VSI\_00037339

VSIQXM\_E00042507

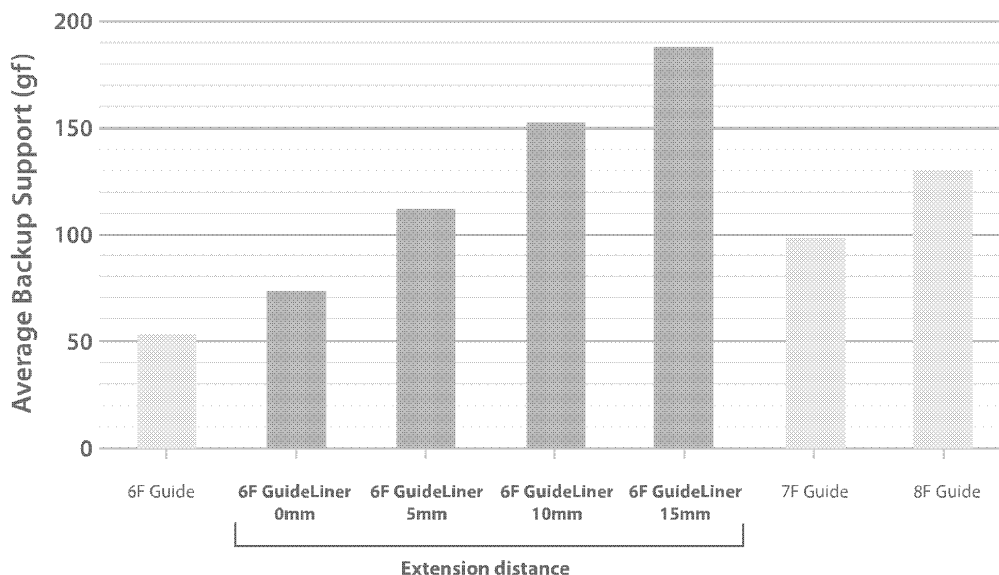
GuideLiner V2 provides mother-and-child guide extension with r  
to allow deep-seating and facilitate distal delivery of intervention



**Proximal tab**  
Identifies guide catheter compatibility  
and GuideLiner I.D.

**Stainless steel push rod**  
Provides strength and support for  
rapid exchange delivery

Bench testing demonstrates the 6F GuideLiner substantially  
increases backup support compared to standard guide catheters.



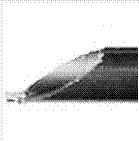
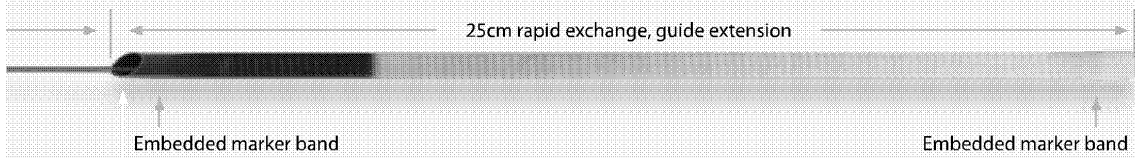
Test data on file at Vascular Solutions, Inc.

VSI\_00037340

VSIQXM\_E00042508

rapid exchange convenience  
nal devices.

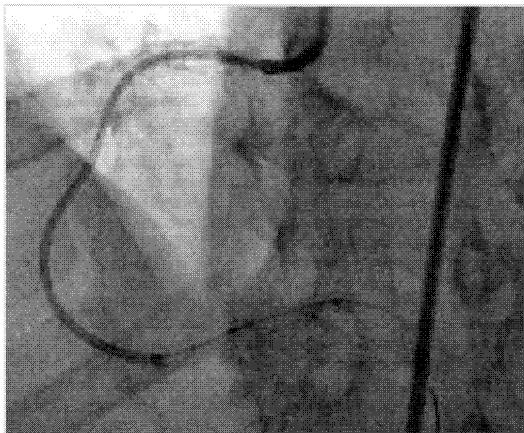
**Guideline<sup>®</sup>**  
*V2 Catheter*



**All-polymer collar**  
Provides flexibility along entire  
guide extension

**Proximal and distal marker bands**  
Clearly identifies the entire extension segment

### Flexible guide extension



Deep seating with the Guideline  
facilitates device delivery through  
tortuous anatomy

### New **V2** Improvements

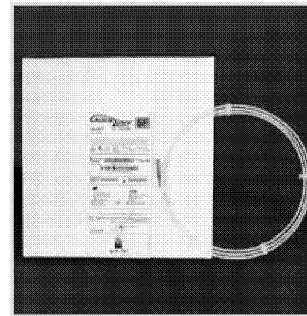
- All-polymer collar for increased flexibility
- New 5.5F size option for compatibility with all 6F guide catheters
- 5cm longer for additional extension

VSI\_00037341

VSIQXM\_E00042509

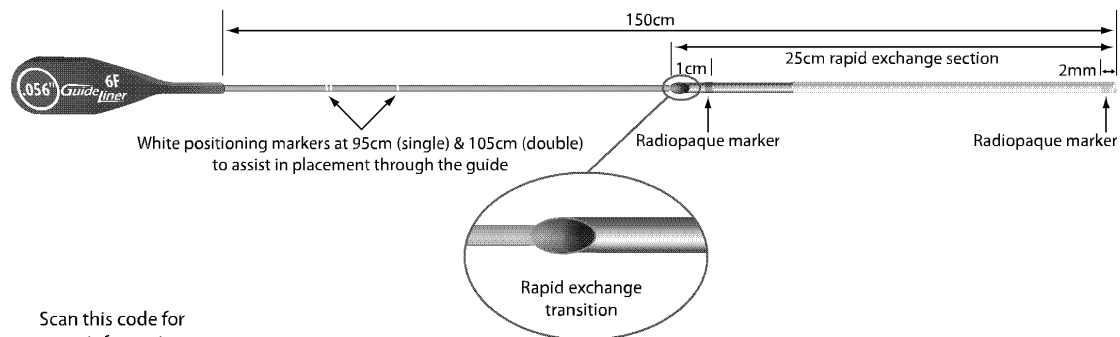
# Guideline<sup>®</sup> V2 Catheter

Guideline catheters are intended to be used in conjunction with guide catheters to access discrete regions of the coronary and/or peripheral vasculature, and to facilitate placement and exchange of guidewires and other interventional devices.



Ordering Specifications*					
Model	Size	Required Guide Catheter I.D.	Guideline I.D.	Rapid Exchange Length	Working Length
5570	5.5F	6F I.D. $\geq 0.066"$ (1.68mm)	0.051" (1.30mm)	25cm	150cm
5571	6F	6F I.D. $\geq 0.070"$ (1.78mm)	0.056" (1.42mm)	25cm	150cm
5572	7F	7F I.D. $\geq 0.078"$ (1.98mm)	0.062" (1.57mm)	25cm	150cm
5573	8F	8F I.D. $\geq 0.088"$ (2.24mm)	0.071" (1.80mm)	25cm	150cm

\*Packaged in quantities of 1 unit per box.



Scan this code for more information on the Guideline.



Please see the Instructions for Use for a complete listing of the indications, contraindications, warnings and precautions.

CAUTION: Federal Law (U.S.A.) restricts this device to sale by or on the order of a physician.

U.S. and International patents pending.

Guideline is a registered trademark of Vascular Solutions, Inc.

©2011 Vascular Solutions, Inc. All rights reserved. ML2515 Rev. A 10/11



**Vascular Solutions, Inc.**  
6464 Sycamore Court  
Minneapolis, Minnesota 55369 USA

Customer Service:  
United States: 888.240.6001  
International: (001) 763.656.4298  
customerservice@vasc.com  
www.vasc.com

VSI\_00037342

VSIQXM\_E00042510