

**UNITED STATES DISTRICT COURT  
FOR THE DISTRICT OF MINNESOTA**

VASCULAR SOLUTIONS LLC, )  
TELEFLEX INNOVATIONS S.à r.l., )  
ARROW INTERNATIONAL, INC., )  
and TELEFLEX LLC )

No. 0:19-cv-01760-PJS-TNL

Plaintiff, )

v. )

MEDTRONIC, INC., and )  
MEDTRONIC VASCULAR, INC., )

**DECLARATION OF PETER  
KEITH IN SUPPORT OF  
PLAINTIFFS' MOTION FOR  
PRELIMINARY INJUNCTION**

Defendant. )

I, Peter Keith, hereby declare and state as follows:

1. I have been retained by Vascular Solutions LLC, Teleflex Innovations S.à r.l., Arrow International, Inc., and Teleflex LLC, whom I will refer to collectively in this declaration as "VSI," to provide my expert opinions in this matter. I make this declaration in support of VSI's Motion for Preliminary Injunction. If called to testify, I could and would testify to the following facts and opinions.

**Personal Background**

2. I summarize my educational background and career history in the following paragraphs. My curriculum vitae is attached as **Exhibit Q** to this declaration.

3. I received a Bachelor of Science degree in mechanical engineering with High Distinction from the University of Minnesota in 1987. During my undergraduate training, I began working as an engineering intern in the research and development (R&D) department at SCIMED, which was later acquired by Boston Scientific

Corporation. I joined SCIMED full-time after graduation, and I remained with the company until 1996. During this time I rose from engineering intern to full-time R&D engineer to Director of R&D. Throughout my various roles at SCIMED, the focus of my work was on medical devices in the field of interventional cardiology, particularly catheter design.

4. Since 1997, I have served as an independent consultant for early stage medical device companies in the areas of product design and intellectual property development. Several of my consulting clients have developed successful products that are on the market and in hospitals today. A number of the products have been in the field of interventional cardiology, particularly catheters.

5. In addition to my work as an independent consultant, since 2000 I have engaged in a number of entrepreneurial ventures in the field of medical devices. In many of these ventures, I held chief responsibility for product design and development. Several of these products have been in the area of interventional cardiology. I have also done considerable work outside the area of interventional cardiology, including in treatments for orthopedics for extremities such as feet and ankles and treatment of spinal disorders. In 2006, I co-founded Entellus Medical, a company focused on treatments for chronic sinusitis. As Chief Technology Officer, I lead the product development and research teams. Entellus went public in 2015, and was acquired by Stryker in 2018.

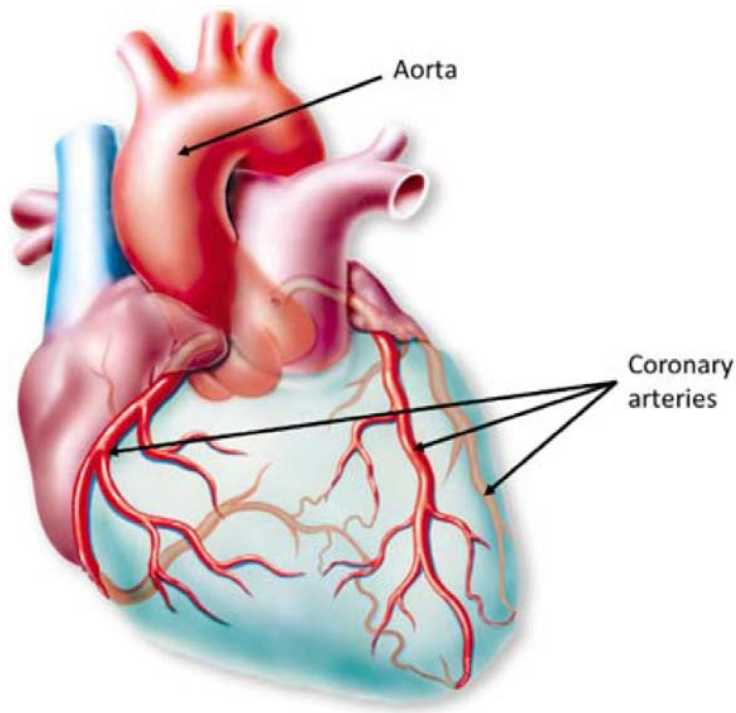
6. Between my work at SCIMED, my independent consulting, and my entrepreneurial ventures, I have been named as an inventor on over 140 issued U.S.

patents, as well as many corresponding patents in foreign countries. Numerous patent applications on which I am a named inventor are still pending.

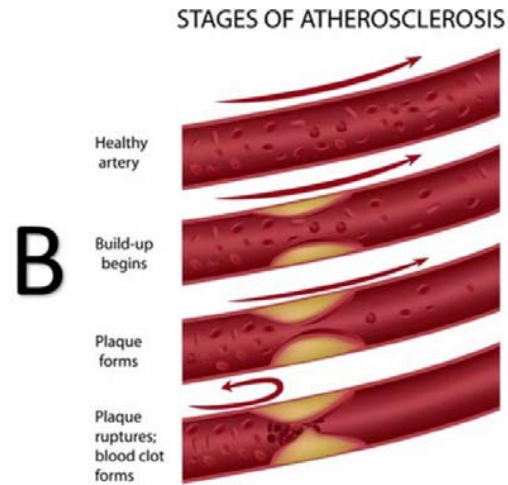
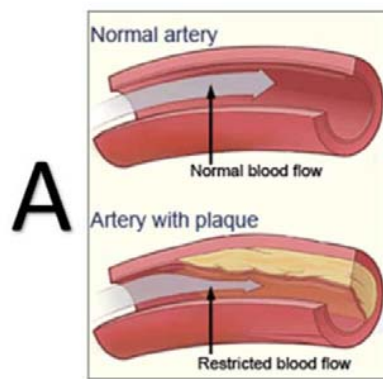
**Background on the Technology: Coronary Catheters and Heart Disease**

7. The technology involved in this case pertains to coronary catheter procedures. These are procedures for treating conditions in the blood vessels of the heart itself (coronary arteries). More specifically, this case pertains to a specialized catheter device used in some of the more challenging procedures, called a “guide extension catheter.”

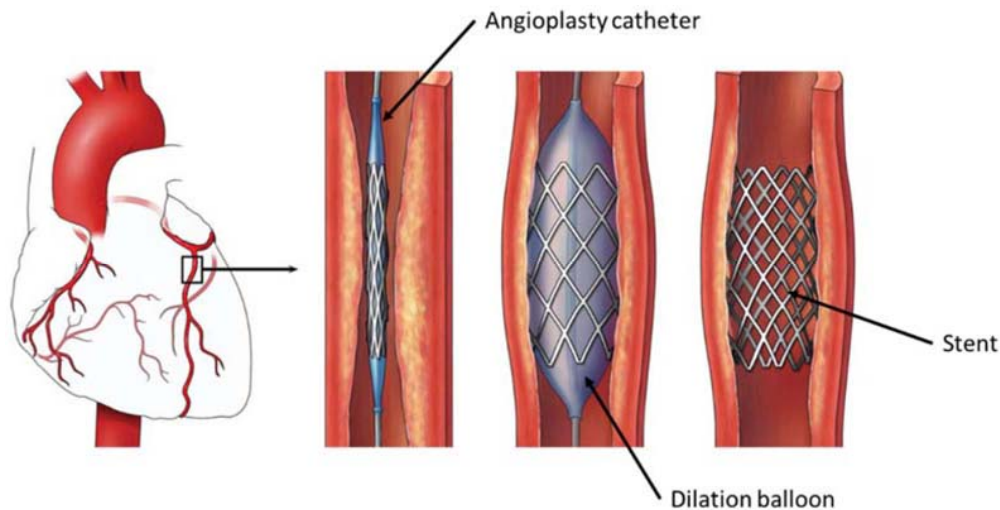
8. As the heart is essentially a large, muscular, pumping organ, it requires a lot of oxygenated blood to sustain itself. This blood circulates within the heart muscle via the coronary arteries (see diagram below). Over time, these blood vessels may become diseased (coronary artery disease, “CAD”) resulting in regions of narrowing or occluding. Starting in the 1970s, advances were made in treating this disease with catheter devices advanced into the coronary arteries from relatively accessible arteries in the leg or arm, e.g., the femoral artery in the leg or the radial artery in the arm.



9. CAD (also called atherosclerosis or plaque buildup) results in narrowed regions (lesions or stenoses) that can restrict the flow of blood to regions of the heart muscle (see below—A). Severe lesions can dramatically restrict the blood flow, starving the muscle of oxygen (ischemia), which can create severe chest pain and significantly limit a patient’s activity and quality of life. If the lesion completely blocks the flow of blood (typically from a subsequent blood clot within the lesion), this can lead to a heart attack (myocardial infarction). (See below—B). Severe lesions and complete blockages necessitate some sort of treatment to reopen the blocked region and re-establish normal or near normal blood flow. In the case of a complete blockage (myocardial infarction), the patient may die if the blocked vessel is not re-opened quickly, i.e., within hours of the blockage.



10. The most common treatment for CAD is with catheter devices that dilate the blockage from inside and place a support scaffold (stent) therein. The stent is inserted across the lesion in a collapsed state and then dilated with a balloon-tipped catheter called an angioplasty catheter (see below). It is therefore critical that these catheter devices are able to be positioned within the blockage, and positioned quickly, in order to successfully treat the patient.



11. One of the main pumping chambers of the heart is the left ventricle “LV.” The LV receives the oxygenated blood from the lungs and pumps it to the body via the

# Explore Litigation Insights

Docket Alarm provides insights to develop a more informed litigation strategy and the peace of mind of knowing you're on top of things.

## Real-Time Litigation Alerts



Keep your litigation team up-to-date with **real-time alerts** and advanced team management tools built for the enterprise, all while greatly reducing PACER spend.

Our comprehensive service means we can handle Federal, State, and Administrative courts across the country.

## Advanced Docket Research



With over 230 million records, Docket Alarm's cloud-native docket research platform finds what other services can't. Coverage includes Federal, State, plus PTAB, TTAB, ITC and NLRB decisions, all in one place.

Identify arguments that have been successful in the past with full text, pinpoint searching. Link to case law cited within any court document via Fastcase.

## Analytics At Your Fingertips



Learn what happened the last time a particular judge, opposing counsel or company faced cases similar to yours.

Advanced out-of-the-box PTAB and TTAB analytics are always at your fingertips.

## API

Docket Alarm offers a powerful API (application programming interface) to developers that want to integrate case filings into their apps.

## LAW FIRMS

Build custom dashboards for your attorneys and clients with live data direct from the court.

Automate many repetitive legal tasks like conflict checks, document management, and marketing.

## FINANCIAL INSTITUTIONS

Litigation and bankruptcy checks for companies and debtors.

## E-DISCOVERY AND LEGAL VENDORS

Sync your system to PACER to automate legal marketing.