

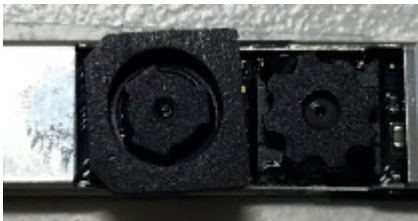

Subject: RE: Patent infringement notice on AOET lens products used in HP's and Dell's products
Date: Thursday, August 8, 2019 at 5:57:47 AM Eastern Daylight Time
From: [Tony Baca](mailto:tony.baca@hp.com)
To: [Mr. Chang](mailto:chang@hp.com)
CC: [Tony Baca](mailto:tony.baca@hp.com), [Mr. Chang](mailto:chang@hp.com)

Attachments: image001.jpg, image002.jpg, image004.png, image006.png, image013.png, image017.png, image021.png, image028.png, image039.png, image045.png, image057.png, image064.png, image066.png, image062.png, image007.jpg, image008.jpg, image016.jpg, image019.jpg, image023.jpg, image033.jpg, image034.jpg, image037.jpg, image041.jpg, image049.jpg, image051.jpg, image055.jpg, image056.jpg, image058.jpg, image059.jpg, image060.jpg, image061.jpg, image071.jpg, image072.jpg, image074.jpg, image075.jpg, image082.jpg, image083.jpg, image085.jpg, image089.jpg, image090.jpg, image091.jpg, image098.jpg, image100.jpg, image102.jpg, image103.jpg

Dear Mr. Chang:

Please find the following lens products which we think may be supplied by AOET for use in the following HP product models sold in the U.S. Should any of the lenses not supplied by AOET, please specify and let us know; otherwise, please let us know the relevant AOET lens model numbers for each of the lenses identified in the following Tables. I am also copying the Senior IP Litigation Counsel at HP Inc. (Mr. Tony Baca) on this email, so that he may assist in verification as well. In addition, please identify the lens model numbers that AOET supplies to HP for use in Spectre Folio model. Mr. Baca had indicated that the lenses used in Spectre Folio is single sourced from AOET, and HP has permitted AOET to disclose to Largan the AOET's lens product model numbers.

Table 1:

HP product models (including, but not limited to, the following identified product IDs)	The HP camera part, which contains two lenses in one part, used in the respective HP product models	Each of the two lenses containing in the camera part infringes the claims of U.S. Patent No. 8,988,796.	Matching with the following claims of U.S. Patent No. 8,988,796
EB840G5 (such as, 3RF12UT; 2FA60AV) EB850G5 (such as	L15509 001 	The lens in the IR module 	The lenses in these identified IR modules for the identified HP product models share

3RS16UT)

ZB14uG5
(such as,
3YE09UT;
3YE10UT)

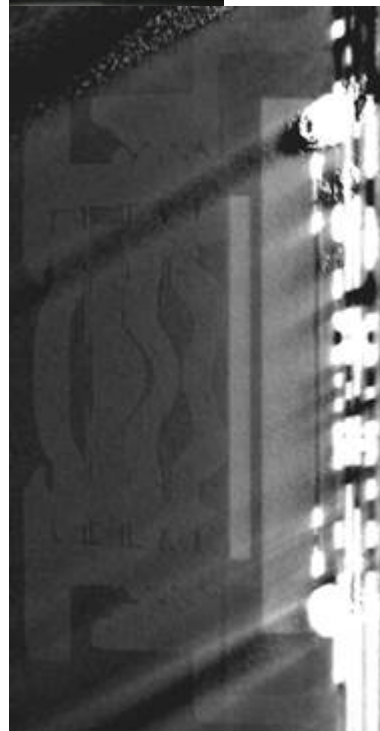
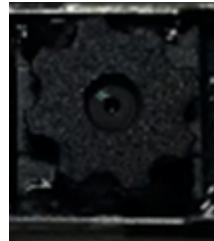
ZB15uG5
(such as,
3YV97UT)



the same optical design and infringes the claims 1, 2, 3, 4, 6, 7, 8, 9, 10, 11, 13, 14, 15, 16, 17, 18, 19, 20 of U.S. Patent No. 8,988,796.

The lenses in these identified non IR modules for the identified HP product models share the same optical design and infringes the claims 1, 2, 3, 4, 5, 6, 7, 8, 9, 13, 14, 15, 17, 18, 19, 20, 21, 22, 24, 25 of U.S. Patent No. 8,988,796.

The lens in the non IR module

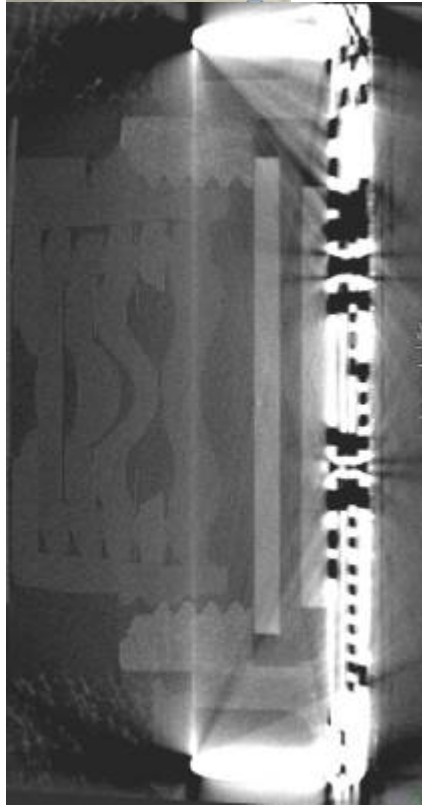
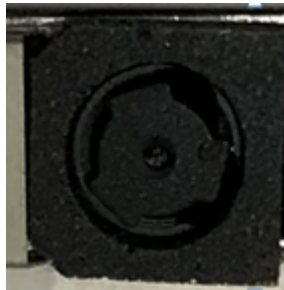
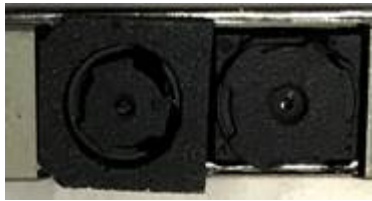


The lens in the IR module

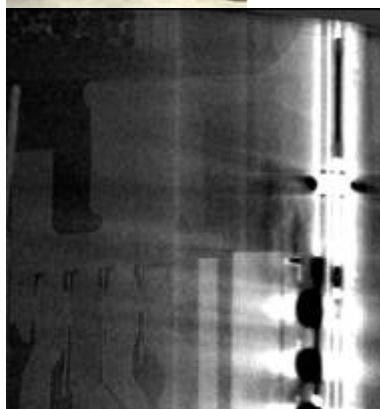
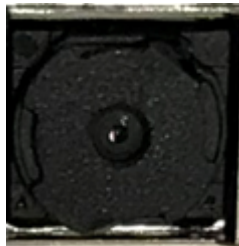
ZBook x2 G4

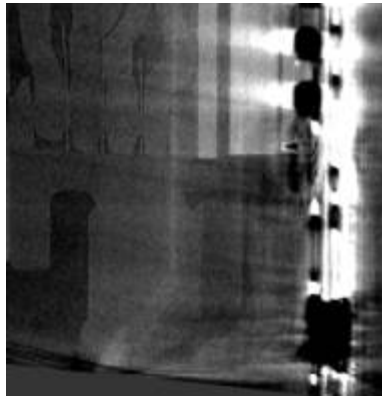
L03250 001

(such as,
2WX08AV;
3WP24UT)



The lens in the non IR module

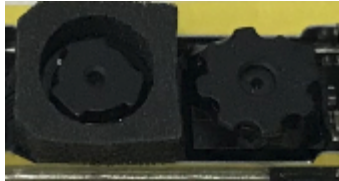




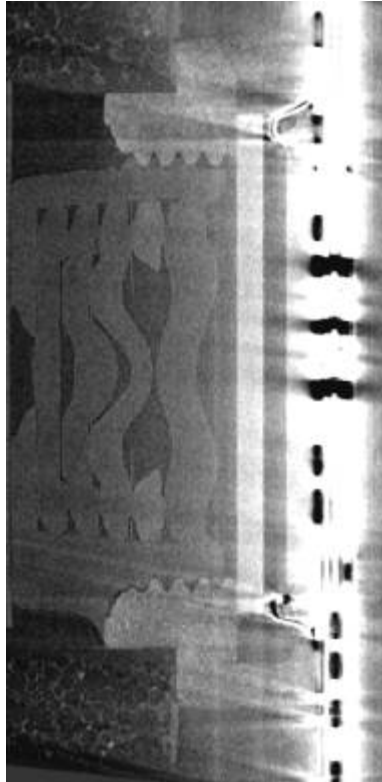
EB735G5
(such as,
4HZ58UT;
4JD52UT)

EB830G5
(such as,
3RB98UT)

L13676 001



The lens in the IR module



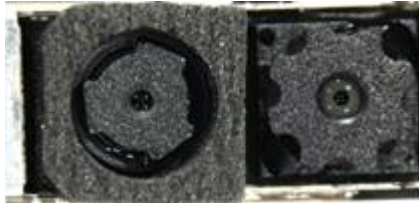
The lens in the non IR module



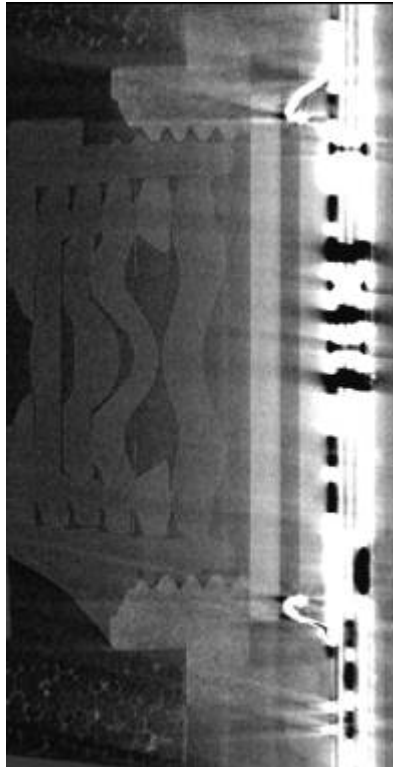
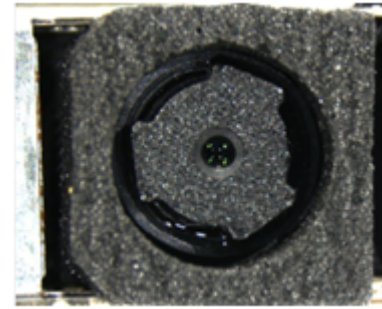


ZB17G5
(such as,
4QZ96UT;
4RB16UT)

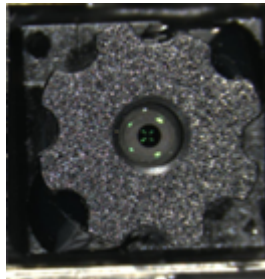
L32739 001



The lens in the IR module



The lens in the non IR module



Explore Litigation Insights

Docket Alarm provides insights to develop a more informed litigation strategy and the peace of mind of knowing you're on top of things.

Real-Time Litigation Alerts



Keep your litigation team up-to-date with **real-time alerts** and advanced team management tools built for the enterprise, all while greatly reducing PACER spend.

Our comprehensive service means we can handle Federal, State, and Administrative courts across the country.

Advanced Docket Research



With over 230 million records, Docket Alarm's cloud-native docket research platform finds what other services can't. Coverage includes Federal, State, plus PTAB, TTAB, ITC and NLRB decisions, all in one place.

Identify arguments that have been successful in the past with full text, pinpoint searching. Link to case law cited within any court document via Fastcase.

Analytics At Your Fingertips



Learn what happened the last time a particular judge, opposing counsel or company faced cases similar to yours.

Advanced out-of-the-box PTAB and TTAB analytics are always at your fingertips.

API

Docket Alarm offers a powerful API (application programming interface) to developers that want to integrate case filings into their apps.

LAW FIRMS

Build custom dashboards for your attorneys and clients with live data direct from the court.

Automate many repetitive legal tasks like conflict checks, document management, and marketing.

FINANCIAL INSTITUTIONS

Litigation and bankruptcy checks for companies and debtors.

E-DISCOVERY AND LEGAL VENDORS

Sync your system to PACER to automate legal marketing.