



US006907225B1

(12) **United States Patent**
Wilkinson

(10) **Patent No.:** **US 6,907,225 B1**
(45) **Date of Patent:** **Jun. 14, 2005**

- (54) **SELECTIVE MEDIA CAPTURE VIA A COMMUNICATION DEVICE**
- (75) Inventor: **Jeffrey Miles Wilkinson**, Wellesley Hills, MA (US)
- (73) Assignee: **Nokia, Inc.**, Irving, TX (US)
- (*) Notice: Subject to any disclaimer, the term of this patent is extended or adjusted under 35 U.S.C. 154(b) by 307 days.

G. Faria, "Mobile DVB-T Using Antenna Receivers", 7 pages, printed Jul. 11, 2001.

G. Faria, "MCP Report to 42° TM", 12 pages, printed Jul. 11, 2001.

M. Lipsanen, "Interactivity with GSM in a Portable Terminal", Nokia Home Communications, 14 pages, dated Oct. 25, 2000, Downloaded and printed from DVB.org website on Jul. 11, 2001.

- (21) Appl. No.: **09/982,233**
- (22) Filed: **Oct. 19, 2001**
- (51) **Int. Cl.**⁷ **H04B 7/00**
- (52) **U.S. Cl.** **455/41.2; 455/3.06; 725/81; 725/123**
- (58) **Field of Search** **455/41.2, 41.3, 455/3.01, 3.03, 3.05, 3.06, 466, 304; 725/61, 81, 86, 87, 99, 123**

Primary Examiner—Vivian Chin
Assistant Examiner—Lewis West
 (74) *Attorney, Agent, or Firm*—Banner & Witcoff, Ltd.

(57) **ABSTRACT**

Methods and systems for selectively capturing content and delivering the captured content to mobile communications devices via wireless communications are disclosed. In some embodiments, a mobile unit sends a request for content to a nearby content server, to which the content server may respond with a list of available content items. The mobile unit may send a second, refined request for a specific content item. The content server may send the requested content item to the mobile unit, or the content server may send a pointer to the mobile unit, which indicates a network location from which a user may later retrieve the actual content item. In another embodiment, a mobile unit sends a request to a content server for presently displayed content. The content server may capture a screen image and send the captured image to the mobile unit. Alternatively, the content server may send the file in a native file format of the file from which the displayed content was generated.

(56) **References Cited**

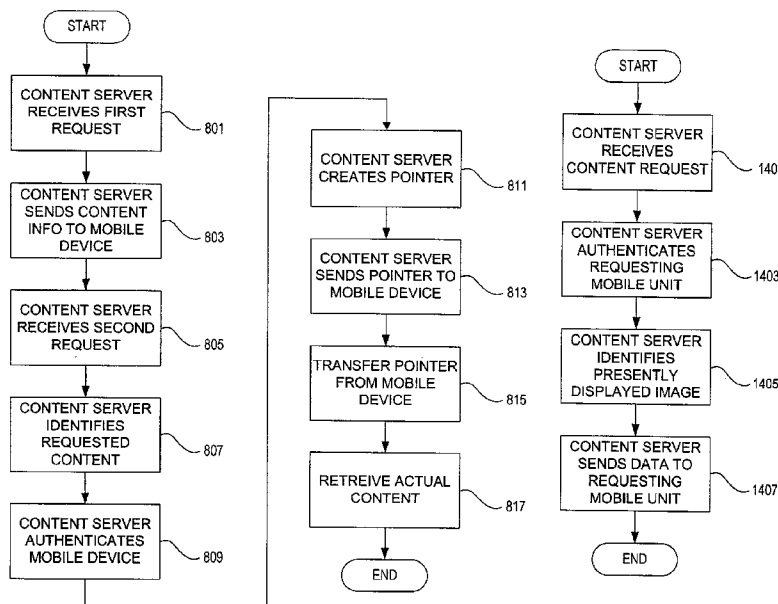
U.S. PATENT DOCUMENTS

5,742,905 A	4/1998	Pepe et al.	455/422.1
5,809,415 A	9/1998	Rossmann	455/461
5,917,480 A	6/1999	Tafoya et al.	
5,920,311 A	7/1999	Anthias	
5,977,983 A	11/1999	Einkauf et al.	
6,052,676 A	4/2000	Hekmatpour	
6,098,126 A	8/2000	Batson et al.	
6,317,609 B1	11/2001	Alperovich et al.	455/556.1

OTHER PUBLICATIONS

The hard reality behind 3G services, http://dailynews.yahoo.com/h/zd/2001070..._hard_reality_behind_3g_services_1.ht 3 pages, dated Jul. 9, 2001.

31 Claims, 8 Drawing Sheets



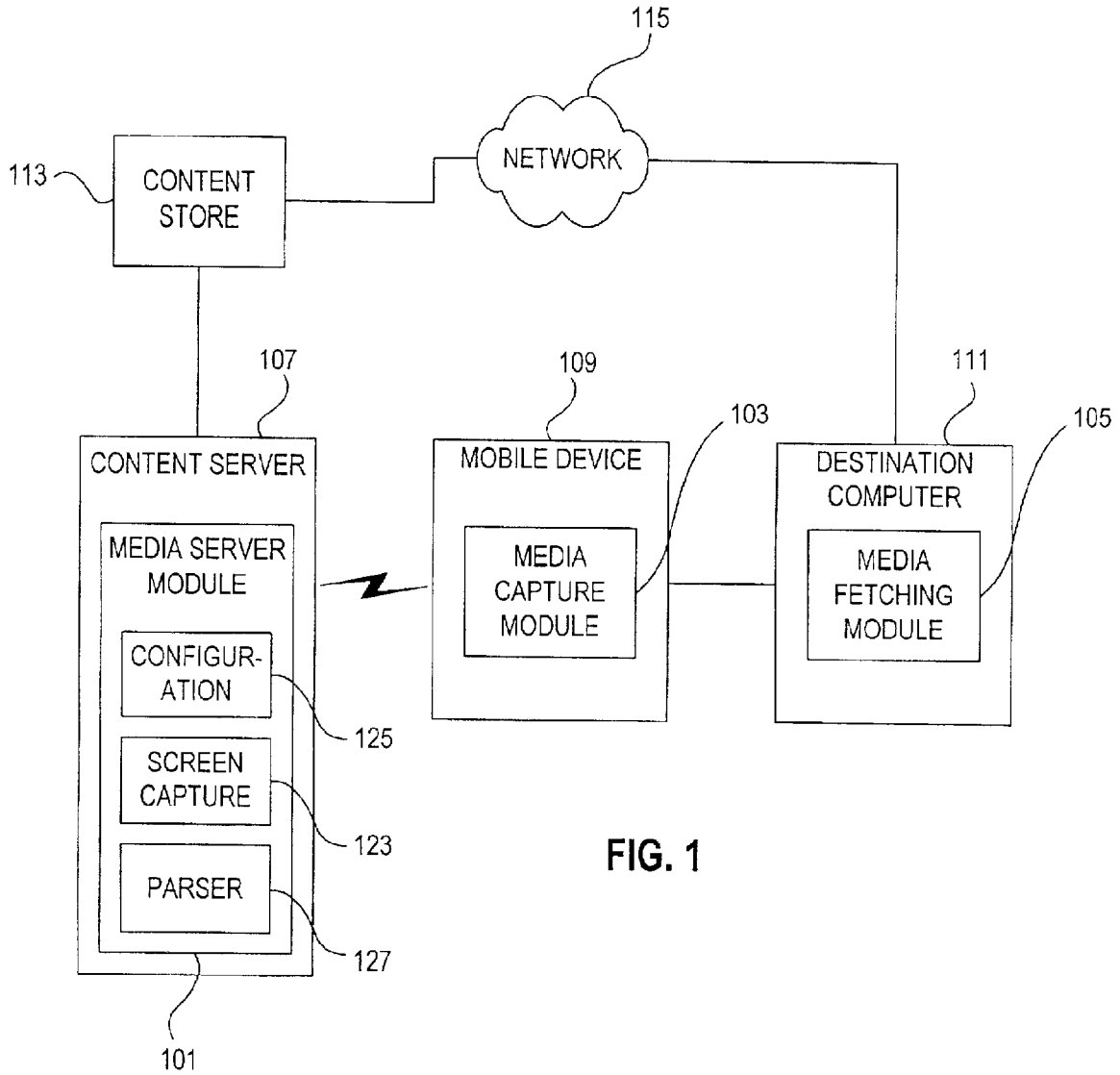


FIG. 1

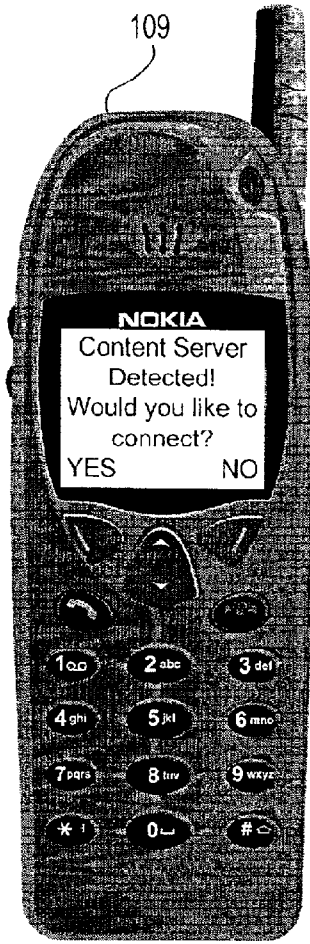


FIG. 2

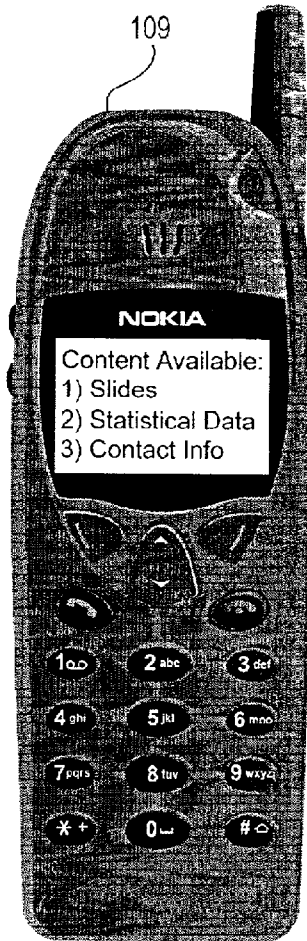


FIG. 3

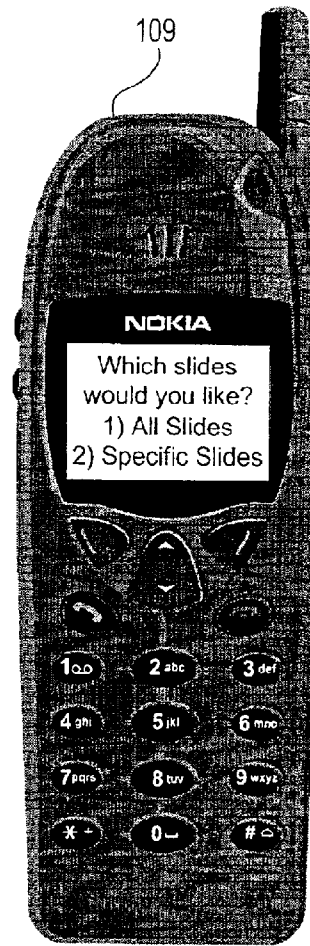


FIG. 4

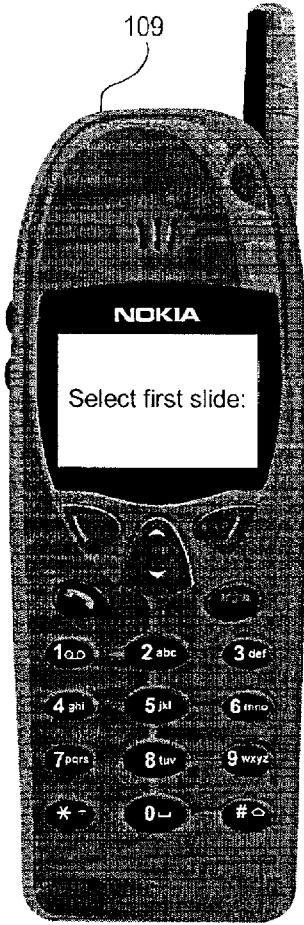


FIG. 5

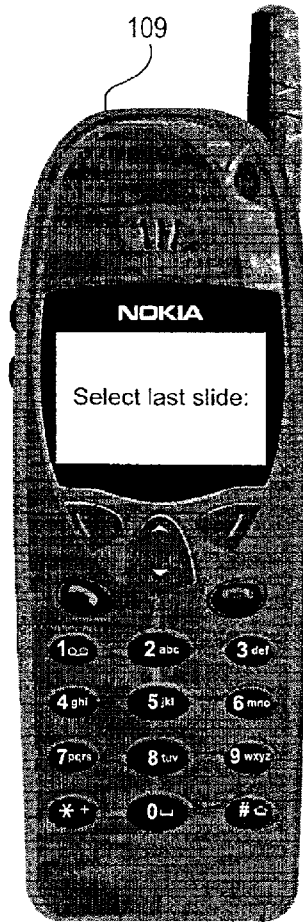


FIG. 6

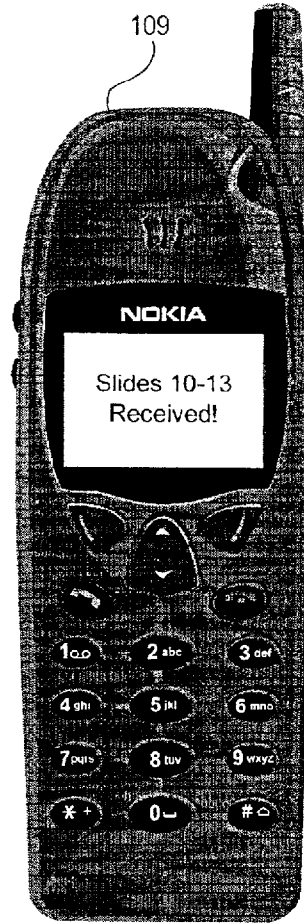


FIG. 7

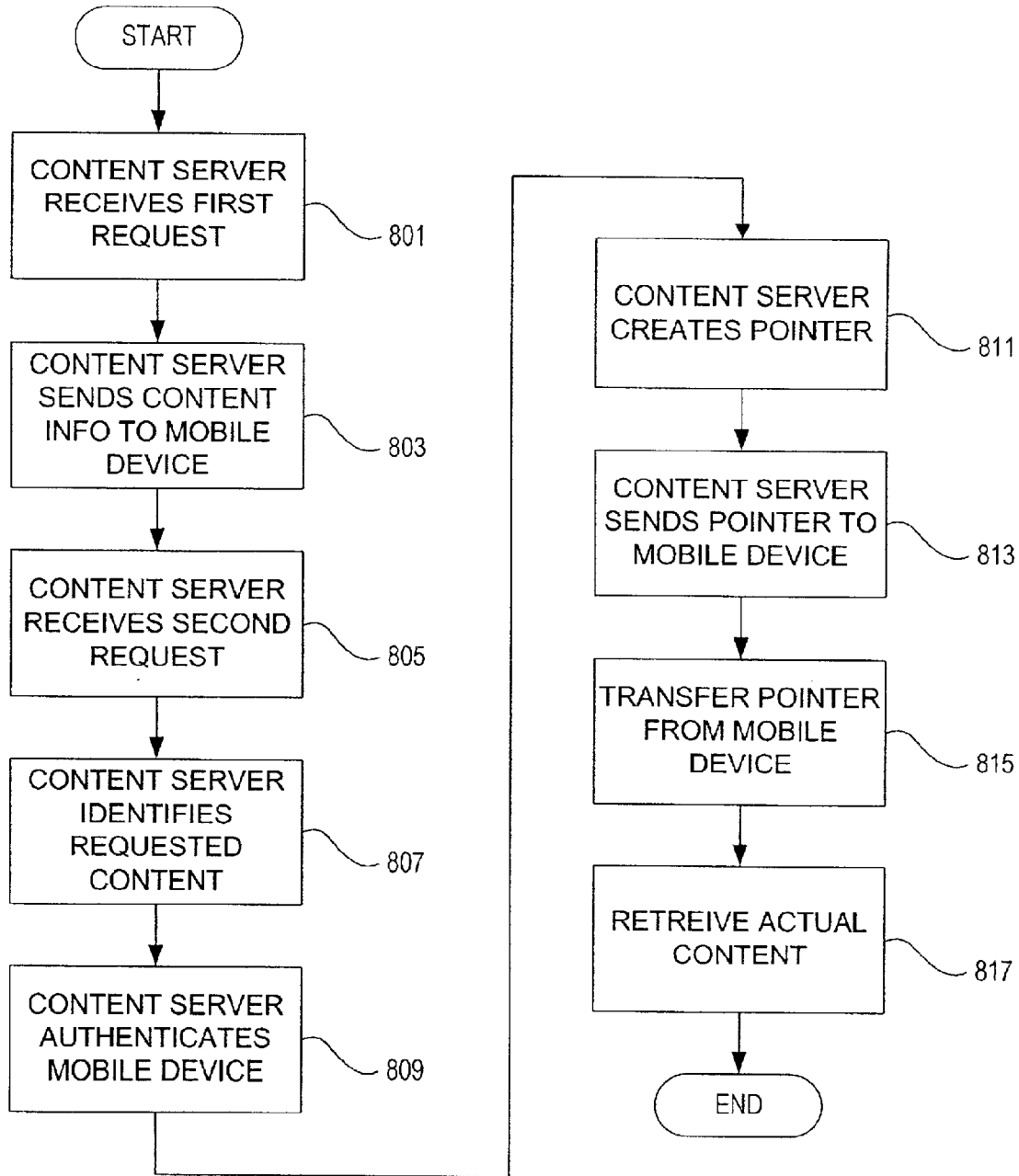


FIG. 8

Explore Litigation Insights

Docket Alarm provides insights to develop a more informed litigation strategy and the peace of mind of knowing you're on top of things.

Real-Time Litigation Alerts



Keep your litigation team up-to-date with **real-time alerts** and advanced team management tools built for the enterprise, all while greatly reducing PACER spend.

Our comprehensive service means we can handle Federal, State, and Administrative courts across the country.

Advanced Docket Research



With over 230 million records, Docket Alarm's cloud-native docket research platform finds what other services can't. Coverage includes Federal, State, plus PTAB, TTAB, ITC and NLRB decisions, all in one place.

Identify arguments that have been successful in the past with full text, pinpoint searching. Link to case law cited within any court document via Fastcase.

Analytics At Your Fingertips



Learn what happened the last time a particular judge, opposing counsel or company faced cases similar to yours.

Advanced out-of-the-box PTAB and TTAB analytics are always at your fingertips.

API

Docket Alarm offers a powerful API (application programming interface) to developers that want to integrate case filings into their apps.

LAW FIRMS

Build custom dashboards for your attorneys and clients with live data direct from the court.

Automate many repetitive legal tasks like conflict checks, document management, and marketing.

FINANCIAL INSTITUTIONS

Litigation and bankruptcy checks for companies and debtors.

E-DISCOVERY AND LEGAL VENDORS

Sync your system to PACER to automate legal marketing.