



US009219780B1

(12) **United States Patent**  
**Tsao**

(10) **Patent No.:** **US 9,219,780 B1**  
(45) **Date of Patent:** **\*Dec. 22, 2015**

(54) **METHOD AND SYSTEM FOR WIRELESS  
DEVICE ACCESS TO EXTERNAL STORAGE**

(71) Applicant: **Sheng Tai (Ted) Tsao**, Fremont, CA  
(US)

(72) Inventor: **Sheng Tai Tsao**, Fremont, CA (US)

(73) Assignee: **Sheng Tai (Ted) Tsao**, Fremont, CA  
(US)

(\* ) Notice: Subject to any disclaimer, the term of this  
patent is extended or adjusted under 35  
U.S.C. 154(b) by 0 days.

This patent is subject to a terminal dis-  
claimer.

(21) Appl. No.: **14/623,476**

(22) Filed: **Feb. 16, 2015**

**Related U.S. Application Data**

(63) Continuation of application No. 14/150,106, filed on  
Jan. 8, 2014, now Pat. No. 9,098,526, which is a  
continuation of application No. 14/079,831, filed on  
Nov. 14, 2013, now Pat. No. 8,868,690, which is a  
continuation of application No. 10/726,897, filed on  
Dec. 4, 2003, now Pat. No. 8,606,880.

(51) **Int. Cl.**  
**G06F 15/16** (2006.01)  
**H04L 29/08** (2006.01)  
**H04W 76/02** (2009.01)  
**G06F 17/30** (2006.01)

(52) **U.S. Cl.**  
CPC ..... **H04L 67/10** (2013.01); **G06F 17/30197**  
(2013.01); **H04L 67/02** (2013.01); **H04W**  
**76/023** (2013.01)

(58) **Field of Classification Search**  
USPC ..... 709/219, 203, 226, 220, 200;  
455/412.1, 899  
See application file for complete search history.

(56) **References Cited**

**U.S. PATENT DOCUMENTS**

8,606,880 B2\* 12/2013 Tsao ..... G06F 17/30067  
455/412.1  
2001/0052073 A1\* 12/2001 Kern ..... G06F 21/10  
713/161  
2002/0104080 A1\* 8/2002 Woodard ..... G06F 9/44505  
717/176  
2002/0133597 A1\* 9/2002 Jhingan ..... H04L 67/30  
709/228  
2003/0072031 A1\* 4/2003 Kuwata ..... H04N 1/00151  
358/1.15  
2004/0033821 A1\* 2/2004 Slesak ..... H04N 5/765  
455/575.1  
2004/0186750 A1\* 9/2004 Surbey ..... G06Q 40/08  
705/4

\* cited by examiner

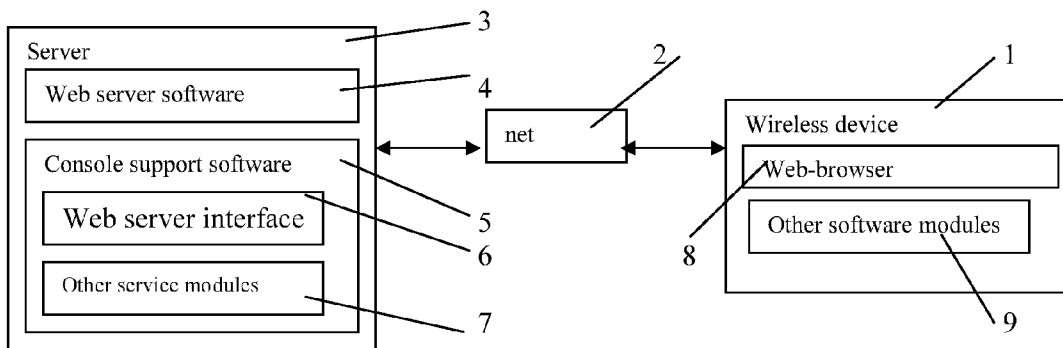
*Primary Examiner* — El Hadji Sall

(57) **ABSTRACT**

Traditionally, wireless device, such as cell phone or personal  
data assistant device (PDA), has relatively smaller storage  
capacity. Therefore, it is quite often that a user of the wireless  
device has difficulty to find more storage space for storing  
ever increased personal data, such as storing multiple Gig  
bytes of multimedia data including digital video, music, or  
photo picture etc.. Instant application disclosed a system and  
method for a storage system providing storage service to the  
wireless device for the wireless device remotely storing per-  
sonal data into an external storage space allocated exclusively  
to a user of the wireless device by the storage system.

**20 Claims, 4 Drawing Sheets**

**Wireless devices supports in a simple environment**



### Wireless devices supports in a simple environment

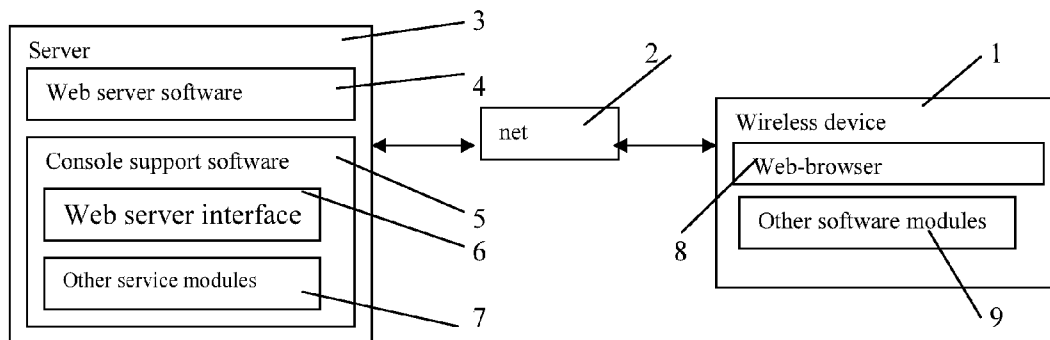


Fig. 1

Wireless devices access external storage through web browser

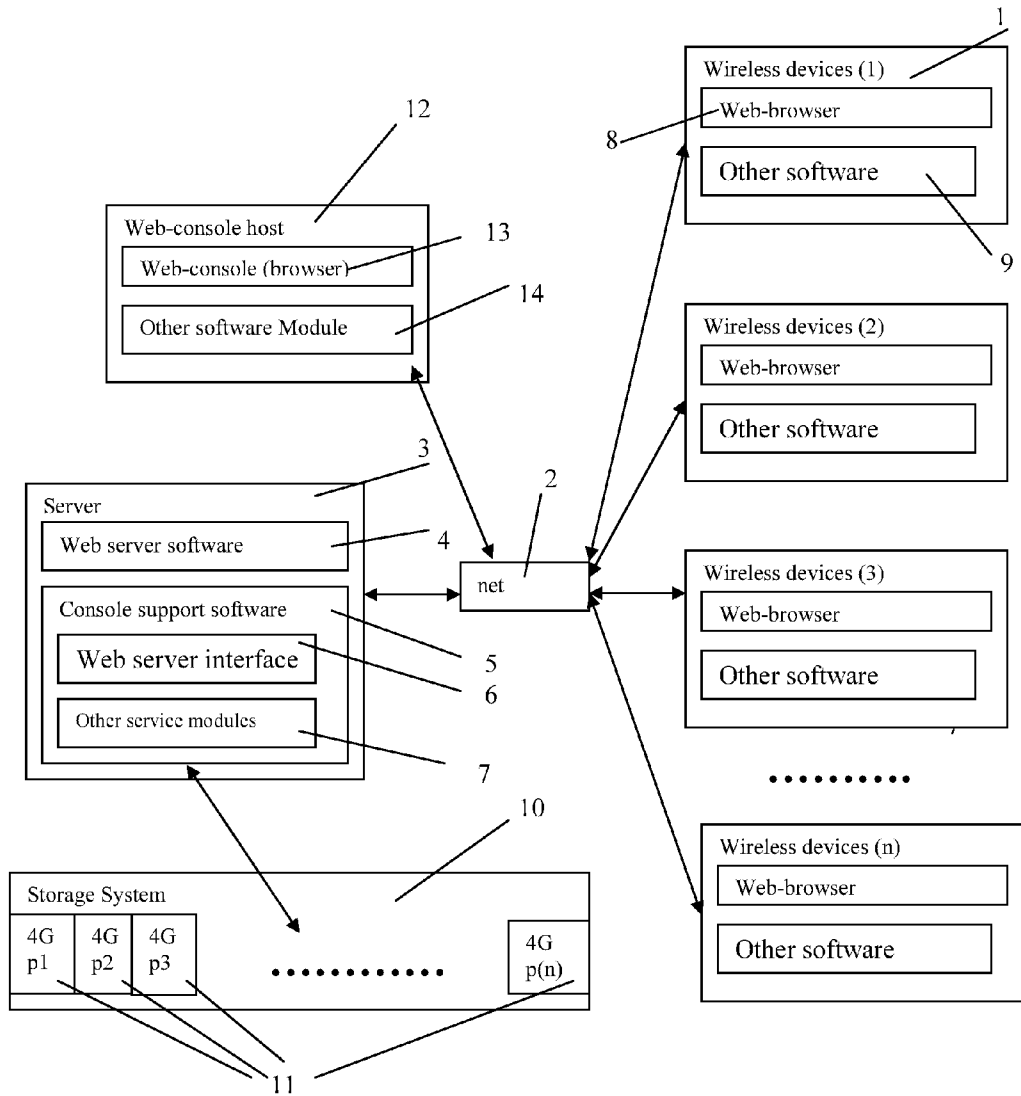


Fig. 2

Wireless out-band download

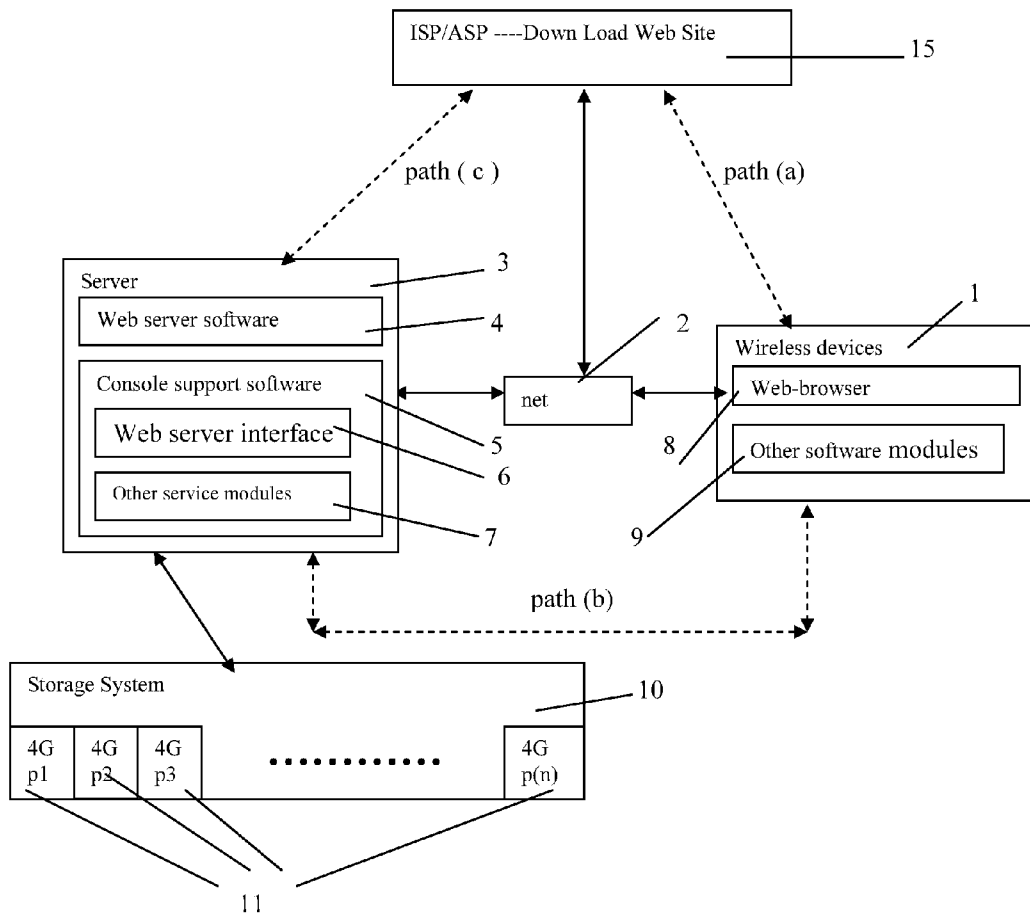


Fig. 3

The CCDSVM Support External Device for Huge Number of Wireless Device

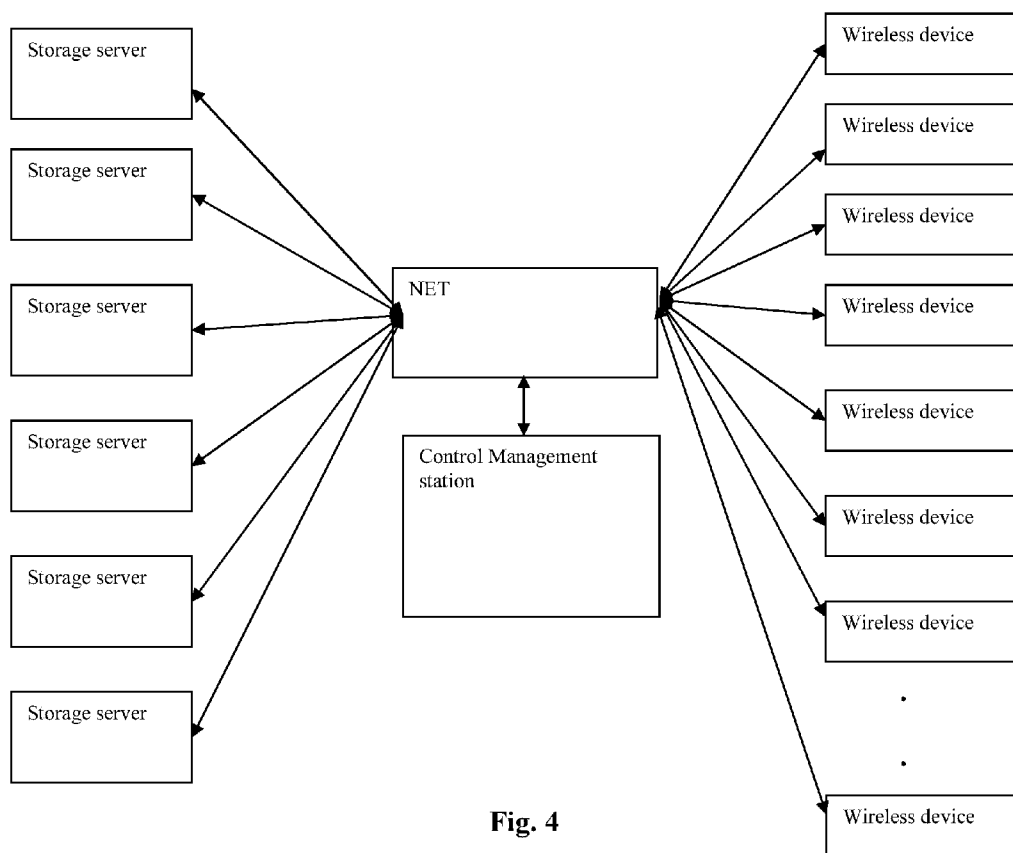


Fig. 4

# Explore Litigation Insights

Docket Alarm provides insights to develop a more informed litigation strategy and the peace of mind of knowing you're on top of things.

## Real-Time Litigation Alerts



Keep your litigation team up-to-date with **real-time alerts** and advanced team management tools built for the enterprise, all while greatly reducing PACER spend.

Our comprehensive service means we can handle Federal, State, and Administrative courts across the country.

## Advanced Docket Research



With over 230 million records, Docket Alarm's cloud-native docket research platform finds what other services can't. Coverage includes Federal, State, plus PTAB, TTAB, ITC and NLRB decisions, all in one place.

Identify arguments that have been successful in the past with full text, pinpoint searching. Link to case law cited within any court document via Fastcase.

## Analytics At Your Fingertips



Learn what happened the last time a particular judge, opposing counsel or company faced cases similar to yours.

Advanced out-of-the-box PTAB and TTAB analytics are always at your fingertips.

## API

Docket Alarm offers a powerful API (application programming interface) to developers that want to integrate case filings into their apps.

## LAW FIRMS

Build custom dashboards for your attorneys and clients with live data direct from the court.

Automate many repetitive legal tasks like conflict checks, document management, and marketing.

## FINANCIAL INSTITUTIONS

Litigation and bankruptcy checks for companies and debtors.

## E-DISCOVERY AND LEGAL VENDORS

Sync your system to PACER to automate legal marketing.