




**Exhibit 2011**

---

**U.S. Patent 923968**  
**For**  
**Microsoft Cloud storage**



# Claim 1 vs. Microsoft Devices

Claim 1 of the '686 Patent	Microsoft Wireless
<p>1. A server for delivering storage service, comprising::</p>	<p>Microsoft Windows wireless device such as Surface provided by Microsoft OneDrive, Microsoft Surface</p>  <p>Roll over image to zoom</p>



# Claim 1 vs. Microsoft Devices

Claim 1 of the '686 Patent	Microsoft Wireless
<p>a plurality of storage spaces; and a non-transitory computer-readable medium comprising program instructions that, being executed by the server, causes the server delivering the storage service; wherein the program instructions comprise:</p>	<p>Microsoft Surface Pro has one computer-readable medium executed by Microsoft Surface Pro, configure Microsoft OneDrive storage space provided by Microsoft OneDrive:</p>



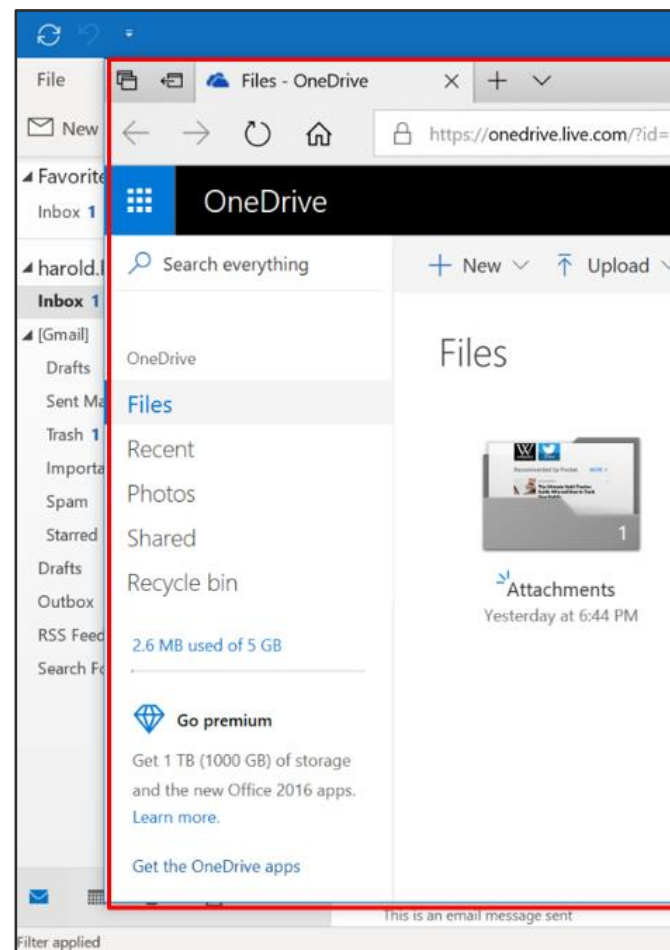
# Claim 1 vs. Microsoft Devices

## Claim 1 of the '686 Patent

program instructions for allocating exclusively a first one of the storage spaces to a user of a first wireless device; program instructions for establishing a communication link for the first wireless device remotely access to the first one of the storage spaces;

## Microsoft Wireless

Program instructions on the computer-readable establishing a communication link, e.g. through Wi-Fi, from a first server, i.e. a server for Microsoft OneDrive, via a first wireless device, e.g. from Microsoft Surface Pro. The OneDrive server allows only the user of the first wireless device to access files registered with the OneDrive, e.g. only the user can





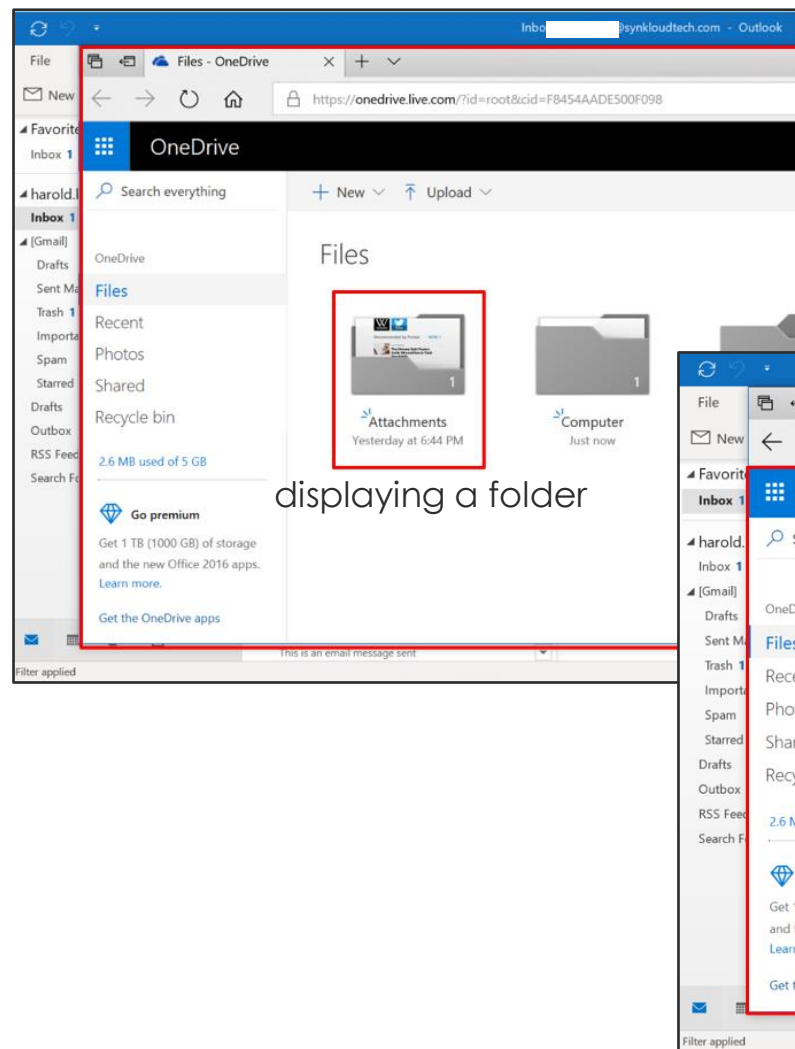
# Claim 1 vs. Microsoft Devices

## Claim 1 of the '686 Patent

program instructions for presenting the first one of the storage spaces to the user on the first wireless device through communication with the first wireless device; and

## Microsoft Wireless

Program instructions on the computer-readable storage medium for presenting the first one of the remote storage space, i.e. files or folders stored in the remote storage space, with the first server, i.e. the server of OneDrive.



# Explore Litigation Insights

Docket Alarm provides insights to develop a more informed litigation strategy and the peace of mind of knowing you're on top of things.

## Real-Time Litigation Alerts



Keep your litigation team up-to-date with **real-time alerts** and advanced team management tools built for the enterprise, all while greatly reducing PACER spend.

Our comprehensive service means we can handle Federal, State, and Administrative courts across the country.

## Advanced Docket Research



With over 230 million records, Docket Alarm's cloud-native docket research platform finds what other services can't. Coverage includes Federal, State, plus PTAB, TTAB, ITC and NLRB decisions, all in one place.

Identify arguments that have been successful in the past with full text, pinpoint searching. Link to case law cited within any court document via Fastcase.

## Analytics At Your Fingertips



Learn what happened the last time a particular judge, opposing counsel or company faced cases similar to yours.

Advanced out-of-the-box PTAB and TTAB analytics are always at your fingertips.

## API

Docket Alarm offers a powerful API (application programming interface) to developers that want to integrate case filings into their apps.

## LAW FIRMS

Build custom dashboards for your attorneys and clients with live data direct from the court.

Automate many repetitive legal tasks like conflict checks, document management, and marketing.

## FINANCIAL INSTITUTIONS

Litigation and bankruptcy checks for companies and debtors.

## E-DISCOVERY AND LEGAL VENDORS

Sync your system to PACER to automate legal marketing.