




Exhibit 2011

---

U.S. Patent 9,219,7  
For  
Microsoft Cloud storage



# Claim 1 vs. Microsoft Devices

Claim 1 of the '780 Patent	Microsoft Wireless D
<p>1. A wireless device access to a remote storage space, the wireless device comprising:</p>	<p>Microsoft Windows wireless device such as Surface Microsoft OneDrive, Microsoft Surface Pro comprising:</p>  <p>Roll over image to zoom</p>

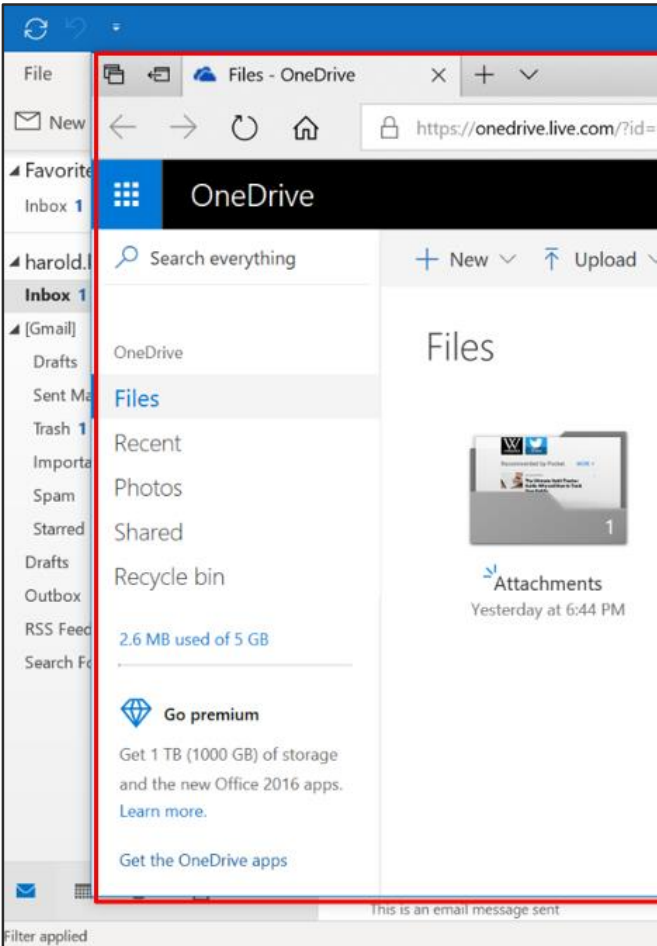


# Claim 1 vs. Microsoft Devices

Claim 1 of the '780 Patent	Microsoft Wireless D
<p>at least one cache storage, and one non-transitory computer-readable medium comprising program instructions which, being executed by the wireless device, cause the wireless device remotely access to the storage space, the program instructions include:</p>	<p>Microsoft Surface Pro has one computer-readable storage device. Microsoft Surface Pro, configure Microsoft Surface Pro to access Microsoft OneDrive:</p>



# Claim 1 vs. Microsoft Devices

Claim 1 of the '780 Patent	Microsoft Wireless
<p>program instructions for establishing a wireless link for remotely access to the storage space, the storage space allocated exclusively by a storage server to a user of the wireless device;</p> <p>program instructions for presenting the storage space to the user on the wireless device through communication with the storage server; and</p>	<p>Program instructions on the computer-readable storage medium for establishing a wireless communication link, e.g. through WiFi, for the wireless device to access the storage space for Microsoft OneDrive, via Microsoft Edge web browser. The storage space on the OneDrive server allocates a 5 GB free storage space exclusively for the user, and the user can manage or share a data in the storage space.</p> 



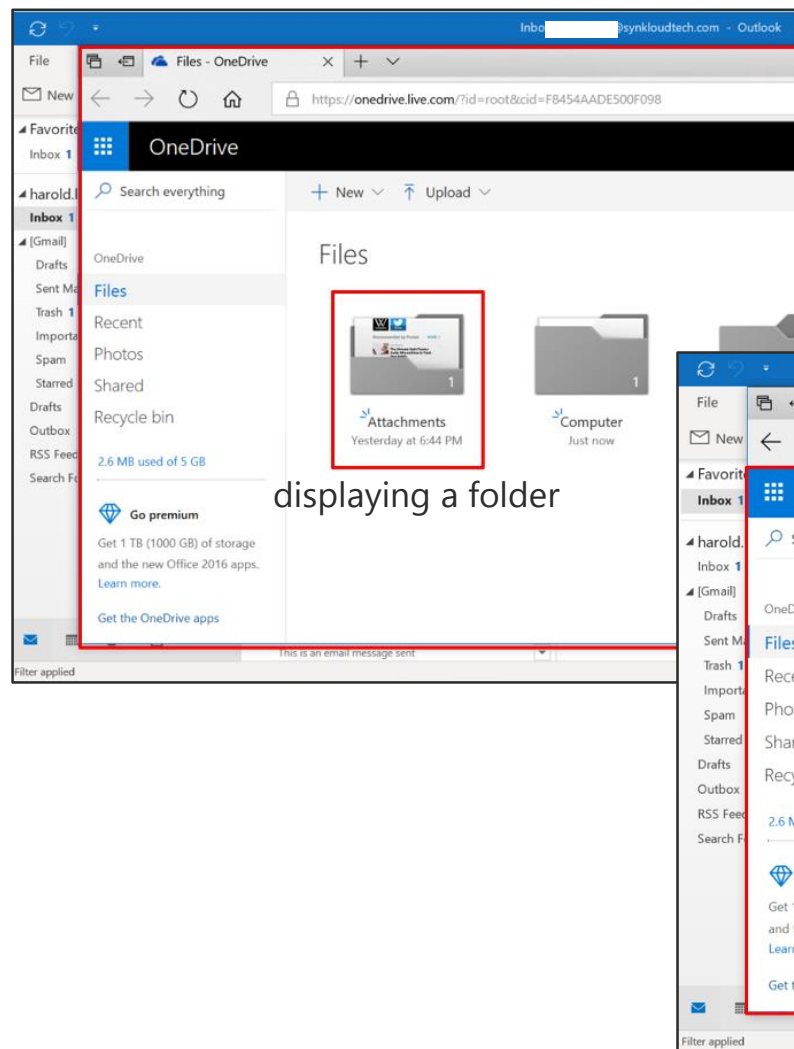
# Claim 1 vs. Microsoft Devices

## Claim 1 of the '780 Patent

program instructions for coupling with the storage server across the wireless link to carry out a requested operation for remotely access to the storage space in response to the user from the wireless device performed the operation,

## Microsoft Wireless D

Program instructions on the computer-readable storage storage space, i.e. files or folders stored in the Microsoft i.e. the server of OneDrive.



# Explore Litigation Insights

Docket Alarm provides insights to develop a more informed litigation strategy and the peace of mind of knowing you're on top of things.

## Real-Time Litigation Alerts



Keep your litigation team up-to-date with **real-time alerts** and advanced team management tools built for the enterprise, all while greatly reducing PACER spend.

Our comprehensive service means we can handle Federal, State, and Administrative courts across the country.

## Advanced Docket Research



With over 230 million records, Docket Alarm's cloud-native docket research platform finds what other services can't. Coverage includes Federal, State, plus PTAB, TTAB, ITC and NLRB decisions, all in one place.

Identify arguments that have been successful in the past with full text, pinpoint searching. Link to case law cited within any court document via Fastcase.

## Analytics At Your Fingertips



Learn what happened the last time a particular judge, opposing counsel or company faced cases similar to yours.

Advanced out-of-the-box PTAB and TTAB analytics are always at your fingertips.

## API

Docket Alarm offers a powerful API (application programming interface) to developers that want to integrate case filings into their apps.

## LAW FIRMS

Build custom dashboards for your attorneys and clients with live data direct from the court.

Automate many repetitive legal tasks like conflict checks, document management, and marketing.

## FINANCIAL INSTITUTIONS

Litigation and bankruptcy checks for companies and debtors.

## E-DISCOVERY AND LEGAL VENDORS

Sync your system to PACER to automate legal marketing.