



www.pdr.net

PHYSICIANS'

DESK

REFERENCE®

PDR®
54
EDITION
2000

PHYSICIANS' DESK REFERENCE®

Senior Vice President, Directory Services: Paul Walsh

Director of Product Management: Mark A. Friedman

Associate Product Manager: Bill Shaughnessy

Senior Business Manager: Mark S. Ritchin

Financial Analyst: Wayne M. Soltis

Director of Sales: Dikran N. Barsamian

National Sales Manager, Pharmaceutical Sales: Anthony Sorce

National Account Manager: Don Bruccoleri

Senior Account Manager: Frank Karkowsky

Account Managers:

Marion Gray, RPh

Lawrence C. Keary

Jeffrey F. Pfohl

Suzanne E. Yarrow, RN

Electronic Sales Account Manager: Stephen M. Silverberg

National Sales Manager, Medical Economics Trade Sales: Bill Gaffney

Director of Direct Marketing: Michael Bennett

List and Production Manager: Lorraine M. Loening

Senior Marketing Analyst: Dina A. Maeder

Director, New Business Development and

Professional Support Services: Mukesh Mehta, RPh

Manager, Drug Information Services: Thomas Fleming, RPh

Drug Information Specialist: Maria Deutsch, MS, RPh, CDE

Editor, Directory Services: David W. Sifton

Senior Associate Editor: Lori Murray

Director of Production: Carrie Williams

Manager of Production: Kimberly H. Vivas

Senior Production Coordinator: Amy B. Brooks

Production Coordinators: Gianna Caradonna, Maria Volpati

Data Manager: Jeffrey D. Schaefer

Senior Format Editor: Gregory J. Westley

Index Editors: Johanna M. Mazur, Robert N. Woerner


Art Associate: Joan K. Akerlind

Senior Digital Imaging Coordinator: Shawn W. Cahill

Digital Imaging Coordinator: Frank J. McElroy, III

Electronic Publishing Designer: Livio Udina

Fulfillment Manager: Stephanie DeNardi

 Copyright © 2000 and published by Medical Economics Company, Inc. at Montvale, NJ 07645-1742. All rights reserved. None of the content of this publication may be reproduced, stored in a retrieval system, resold, redistributed, or transmitted in any form or by any means (electronic, mechanical, photocopying, recording, or otherwise) without the prior written permission of the publisher. PHYSICIANS' DESK REFERENCE®, PDR®, PDR For Ophthalmology®, Pocket PDR®, and The PDR® Family Guide to Prescription Drugs® are registered trademarks used herein under license. PDR For Nonprescription Drugs and Dietary Supplements™, PDR Companion Guide™, PDR® for Herbal Medicines™, PDR® Medical Dictionary™, PDR® Nurse's Drug Handbook™, PDR® Nurse's Dictionary™, The PDR® Family Guide Encyclopedia of Medical Care™, The PDR® Family Guide to Natural Medicines and Healing Therapies™, The PDR® Family Guide to Common Ailments™, The PDR® Family Guide to Over-the-Counter Drugs™, and PDR® Electronic Library™ are trademarks used herein under license.

Officers of Medical Economics Company: *President and Chief Executive Officer:* Curtis B. Allen; *Vice President, New Media:* L. Suzanne BeDell; *Vice President, Corporate Human Resources:* Pamela M. Bilash; *Vice President and Chief Information Officer:* Steven M. Bressler; *Chief Financial Officer:* Christopher Caridi; *Vice President and Controller:* Bary Gray; *Vice President, New Business Planning:* Linda G. Hope; *Vice President, Business Integration:* David A. Pitler; *Vice President, Finance:* Donna Santaripa; *Senior Vice President, Directory Services:* Paul Walsh; *Senior Vice President, Operations:* John R. Ware; *Senior Vice President, Internet Strategies:* Raymond Zoeller



Printed on recycled paper

ISBN: 1-56363-330-2

Tenoretic—Cont.**HOW SUPPLIED**

TENORETIC 50 Tablets (atenolol 50 mg and chlorthalidone 25 mg), NDC 0310-0115, (white, round, biconvex, uncoated tablets with TENORETIC on one side and 115 on the other side, bisected) are supplied in bottles of 100 tablets.

TENORETIC 100 Tablets (atenolol 100 mg and chlorthalidone 25 mg), NDC 0310-0117, (white, round, biconvex, uncoated tablets with TENORETIC on one side and 117 on the other side) are supplied in bottles of 100 tablets.

Store at controlled room temperature, 20–25°C (68–77°F) [see USP]. Dispense in well-closed, light-resistant containers.

ZENECA

Manufactured for:

Zeneca Pharmaceuticals

A Business Unit of Zeneca Inc.

Wilmington, Delaware 19850-5437

By: IPR Pharmaceuticals, Inc.

Carolina, Puerto Rico 00984-1967

Rev D 01/99

SIC 64112-01

Shown in Product Identification Guide, page 305

TENORMIN® Tablets**TENORMIN® I.V. Injection**

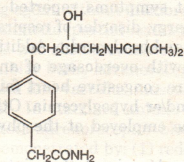
(ten-or-'min)

(atenolol)

DESCRIPTION

TENORMIN (atenolol), a synthetic, beta₁-selective (cardioselective) adrenoceptor blocking agent, may be chemically described as benzeneacetamide, 4-[2'-hydroxy-3'-[(1-methylethyl)amino]propoxy]-. The molecular and structural formulas are:

C₁₄H₂₂N₂O₃



Atenolol (free base) has a molecular weight of 266. It is a relatively polar hydrophilic compound with a water solubility of 26.5 mg/mL at 37°C and a log partition coefficient (octanol/water) of 0.23. It is freely soluble in 1N HCl (300 mg/mL at 25°C) and less soluble in chloroform (3 mg/mL at 25°C).

TENORMIN is available as 25, 50 and 100 mg tablets for oral administration. TENORMIN for parenteral administration is available as TENORMIN I.V. Injection containing 5 mg atenolol in 10 mL sterile, isotonic, citrate-buffered, aqueous solution. The pH of the solution is 5.5–6.5.

Inactive Ingredients: TENORMIN Tablets: Magnesium stearate, microcrystalline cellulose, povidone, sodium starch glycolate. TENORMIN I.V. Injection: Sodium chloride for isotonicity and citric acid and sodium hydroxide to adjust pH.

CLINICAL PHARMACOLOGY

TENORMIN is a beta₁-selective (cardioselective) beta-adrenergic receptor blocking agent without membrane stabilizing or intrinsic sympathomimetic (partial agonist) activities. This preferential effect is not absolute, however, and at higher doses, TENORMIN inhibits beta₂-adrenoceptors, chiefly located in the bronchial and vascular musculature.

Pharmacokinetics and Metabolism: In man, absorption of an oral dose is rapid and consistent but incomplete. Approximately 50% of an oral dose is absorbed from the gastrointestinal tract, the remainder being excreted unchanged in the feces. Peak blood levels are reached between two (2) and four (4) hours after ingestion. Unlike propranolol or metoprolol, but like nadolol, TENORMIN undergoes little or no metabolism by the liver, and the absorbed portion is eliminated primarily by renal excretion. Over 85% of an intravenous dose is excreted in urine within 24 hours compared with approximately 50% for an oral dose. TENORMIN also differs from propranolol in that only a small amount (6%–16%) is bound to proteins in the plasma. This kinetic profile results in relatively consistent plasma drug levels with about a fourfold interpatient variation.

The elimination half-life of oral TENORMIN is approximately 6 to 7 hours, and there is no alteration of the kinetic profile of the drug by chronic administration. Following intravenous administration, peak plasma levels are reached within 5 minutes. Declines from peak levels are rapid (5- to 10-fold) during the first 7 hours; thereafter, plasma levels decay with a half-life similar to that of orally administered drug. Following oral doses of 50 mg or 100 mg, both beta-blocking and antihypertensive effects persist for at least 24 hours. When renal function is impaired, elimination of TENORMIN is closely related to the glomerular filtration rate; significant accumulation occurs when the creatinine clearance falls below 35 mL/min/1.73m². (See DOSAGE AND ADMINISTRATION.)

Pharmacodynamics: In standard animal or human pharmacological tests, beta-adrenoceptor blocking activity of

TENORMIN has been demonstrated by: (1) reduction in resting and exercise heart rate and cardiac output, (2) reduction of systolic and diastolic blood pressure at rest and on exercise, (3) inhibition of isoproterenol induced tachycardia, and (4) reduction in reflex orthostatic tachycardia.

A significant beta-blocking effect of TENORMIN, as measured by reduction of exercise tachycardia, is apparent within one hour following oral administration of a single dose. This effect is maximal at about 2 to 4 hours, and persists for at least 24 hours. Maximum reduction in exercise tachycardia occurs within 5 minutes of an intravenous dose. For both orally and intravenously administered drug, the duration of action is dose related and also bears a linear relationship to the logarithm of plasma TENORMIN concentration. The effect on exercise tachycardia of a single 10 mg intravenous dose is largely dissipated by 12 hours, whereas beta-blocking activity of single oral doses of 50 mg and 100 mg is still evident beyond 24 hours following administration. However, as has been shown for all beta-blocking agents, the antihypertensive effect does not appear to be related to plasma level.

In normal subjects, the beta₁-selectivity of TENORMIN has been shown by its reduced ability to reverse the beta₂-mediated vasodilating effect of isoproterenol as compared to equivalent beta-blocking doses of propranolol. In asthmatic patients, a dose of TENORMIN producing a greater effect on resting heart rate than propranolol resulted in much less increase in airway resistance. In a placebo controlled comparison of approximately equipotent oral doses of several beta blockers, TENORMIN produced a significantly smaller decrease of FEV₁ than nonselective beta blockers such as propranolol and, unlike those agents, did not inhibit bronchodilation in response to isoproterenol.

Consistent with its negative chronotropic effect due to beta blockade of the SA node, TENORMIN increases sinus cycle length and sinus node recovery time. Conduction in the AV node is also prolonged. TENORMIN is devoid of membrane stabilizing activity, and increasing the dose well beyond that producing beta blockade does not further depress myocardial contractility. Several studies have demonstrated a moderate (approximately 10%) increase in stroke volume at rest and during exercise.

In controlled clinical trials, TENORMIN, given as a single daily oral dose, was an effective antihypertensive agent providing 24-hour reduction of blood pressure. TENORMIN has been studied in combination with thiazide-type diuretics, and the blood pressure effects of the combination are approximately additive. TENORMIN is also compatible with methyldopa, hydralazine, and prazosin, each combination resulting in a larger fall in blood pressure than with the single agents. The dose range of TENORMIN is narrow and increasing the dose beyond 100 mg once daily is not associated with increased antihypertensive effect. The mechanisms of the antihypertensive effects of beta-blocking agents have not been established. Several possible mechanisms have been proposed and include: (1) competitive antagonism of catecholamines at peripheral (especially cardiac) adrenergic neuron sites, leading to decreased cardiac output, (2) a central effect leading to reduced sympathetic outflow to the periphery, and (3) suppression of renin activity. The results from long-term studies have not shown any diminution of the antihypertensive efficacy of TENORMIN with prolonged use.

By blocking the positive chronotropic and inotropic effects of catecholamines and by decreasing blood pressure, atenolol generally reduces the oxygen requirements of the heart at any given level of effort, making it useful for many patients in the long-term management of angina pectoris. On the other hand, atenolol can increase oxygen requirements by increasing left ventricular fiber length and end diastolic pressure, particularly in patients with heart failure.

In a multicenter clinical trial (ISIS-1) conducted in 16,027 patients with suspected myocardial infarction, patients presenting within 12 hours (mean = 5 hours) after the onset of pain were randomized to either conventional therapy plus TENORMIN (n = 8,037), or conventional therapy alone (n = 7,990). Patients with a heart rate of <50 bpm or systolic blood pressure <100 mm Hg, or with other contraindications to beta blockade, were excluded. Thirty-eight percent of each group were treated within 4 hours of onset of pain. The mean time from onset of pain to entry was 5.0 ± 2.7 hours in both groups. Patients in the TENORMIN group were to receive TENORMIN I.V. Injection 5–10 mg given over 5 minutes plus TENORMIN Tablets 50 mg every 12 hours orally on the first study day (the first oral dose administered about 15 minutes after the IV dose) followed by either TENORMIN Tablets 100 mg once daily or TENORMIN Tablets 50 mg twice daily on days 2–7. The groups were similar in demographic and medical history characteristics and in electrocardiographic evidence of myocardial infarction, bundle branch block, and first degree atrioventricular block at entry.

During the treatment period (days 0–7), the vascular mortality rates were 3.89% in the TENORMIN group (313 deaths) and 4.57% in the control group (365 deaths). This absolute difference in rates, 0.68%, is statistically significant at the P < 0.05 level. The absolute difference translates into a proportional reduction of 15% (3.89-4.57/4.57 = -0.15). The 95% confidence limits are 1%–27%. Most of the difference was attributed to mortality in days 0–1 (TENORMIN—121 deaths; control—171 deaths).

Despite the large size of the ISIS-1 trial, it is not possible to identify clearly subgroups of patients most likely or least likely to benefit from early treatment with atenolol. Good clinical judgment suggests, however, that patients who are

dependent on sympathetic stimulation for maintenance of adequate cardiac output and blood pressure are not good candidates for beta blockade. Indeed, the trial protocol reflected that judgment by excluding patients with blood pressure consistently below 100 mm Hg systolic. The overall results of the study are compatible with the possibility that patients with borderline blood pressure (less than 120 mm Hg systolic), especially if over 60 years of age, are less likely to benefit.

The mechanism through which atenolol improves survival in patients with definite or suspected acute myocardial infarction is unknown, as is the case for other beta blockers in the postinfarction setting. Atenolol, in addition to its effects on survival, has shown other clinical benefits including reduced frequency of ventricular premature beats, reduced chest pain, and reduced enzyme elevation.

INDICATIONS AND USAGE

Hypertension: TENORMIN is indicated in the management of hypertension. It may be used alone or concomitantly with other antihypertensive agents, particularly with a thiazide-type diuretic.

Angina Pectoris Due to Coronary Atherosclerosis: TENORMIN is indicated for the long-term management of patients with angina pectoris.

Acute Myocardial Infarction: TENORMIN is indicated in the management of hemodynamically stable patients with definite or suspected acute myocardial infarction to reduce cardiovascular mortality. Treatment can be initiated as soon as the patient's clinical condition allows. (See DOSAGE AND ADMINISTRATION, CONTRAINDICATIONS, AND WARNINGS.) In general, there is no basis for treating patients like those who were excluded from the ISIS-1 trial (blood pressure less than 100 mm Hg systolic, heart rate less than 50 bpm) or have other reasons to avoid beta blockade. As noted above, some subgroups (eg, elderly patients with systolic blood pressure below 120 mm Hg) seemed less likely to benefit.

CONTRAINDICATIONS

TENORMIN is contraindicated in sinus bradycardia, heart block greater than first degree, cardiogenic shock, and overt cardiac failure. (See WARNINGS.)

WARNINGS

Cardiac Failure: Sympathetic stimulation is necessary in supporting circulatory function in congestive heart failure, and beta blockade carries the potential hazard of further depressing myocardial contractility and precipitating more severe failure. In patients who have congestive heart failure controlled by digitalis and/or diuretics, TENORMIN should be administered cautiously. Both digitalis and atenolol slow AV conduction.

In patients with acute myocardial infarction, cardiac failure which is not promptly and effectively controlled by 80 mg of intravenous furosemide or equivalent therapy is a contraindication to beta-blocker treatment.

In Patients Without a History of Cardiac Failure: Continued depression of the myocardium with beta-blocking agents over a period of time can, in some cases, lead to cardiac failure. At the first sign or symptom of impending cardiac failure, patients should be fully digitalized and/or be given a diuretic and the response observed closely. If cardiac failure continues despite adequate digitalization and diuresis, TENORMIN should be withdrawn. (SEE DOSAGE AND ADMINISTRATION.)

Cessation of Therapy with TENORMIN: Patients with coronary artery disease, who are being treated with TENORMIN, should be advised against abrupt discontinuation of therapy. Severe exacerbation of angina and the occurrence of myocardial infarction and ventricular arrhythmias have been reported in angina patients following the abrupt discontinuation of therapy with beta blockers. The last two complications may occur with or without preceding exacerbation of the angina pectoris. As with other beta blockers, when discontinuation of TENORMIN is planned, the patients should be carefully observed and advised to limit physical activity to a minimum. If the angina worsens or acute coronary insufficiency develops, it is recommended that TENORMIN be promptly reinstated, at least temporarily. Because coronary artery disease is common and may be unrecognized, it may be prudent not to discontinue TENORMIN therapy abruptly even in patients treated only for hypertension. (See DOSAGE AND ADMINISTRATION.)

Concomitant Use of Calcium Channel Blockers: Bradycardia and heart block can occur and the left ventricular end diastolic pressure can rise when beta blockers are administered with verapamil or diltiazem. Patients with pre-existing conduction abnormalities or left ventricular dysfunction are particularly susceptible. (See PRECAUTIONS.)

Bronchospastic Diseases: PATIENTS WITH BRONCHOSPASTIC DISEASE SHOULD, IN GENERAL, NOT RECEIVE BETA BLOCKERS. Because of its relative beta₁ selectivity, however, TENORMIN may be used with caution in patients with bronchospastic disease who do not respond to, or cannot tolerate, other antihypertensive treatment. Since beta₁ selectivity is not absolute, the lowest possible dose of TENORMIN should be used with therapy initiated at 50 mg and a beta₂-stimulating agent (bronchodilator) should be made available. If dosage must be increased, dividing the dose should be considered in order to achieve lower peak blood levels.

Anesthesia and Major Surgery: It is not advisable to withdraw beta-adrenoceptor blocking drugs prior to surgery in

the majority of patients. However, care should be taken when using anesthetic agents such as those which may depress the myocardium. Vagal dominance, if it occurs, may be corrected with atropine (1-2 mg IV).

Additionally, caution should be used when TENORMIN I.V. Injection is administered concomitantly with such agents. TENORMIN, like other beta blockers, is a competitive inhibitor of beta-receptor agonists and its effects on the heart can be reversed by administration of such agents: eg, dobutamine or isoproterenol with caution (see section on OVERDOSAGE).

Diabetes and Hypoglycemia: TENORMIN should be used with caution in diabetic patients if a beta-blocking agent is required. Beta blockers may mask tachycardia occurring with hypoglycemia, but other manifestations such as dizziness and sweating may not be significantly affected. At recommended doses TENORMIN does not potentiate insulin-induced hypoglycemia and, unlike nonselective beta blockers, does not delay recovery of blood glucose to normal levels.

Thyrotoxicosis: Beta-adrenergic blockade may mask certain clinical signs (eg, tachycardia) of hyperthyroidism. Patients suspected of having thyroid disease should be monitored closely when administering TENORMIN I.V. Injection. Abrupt withdrawal of beta blockade might precipitate a thyroid storm; therefore, patients suspected of developing thyrotoxicosis from whom TENORMIN therapy is to be withdrawn should be monitored closely. (See DOSAGE AND ADMINISTRATION.)

Pregnancy and Fetal Injury: Atenolol can cause fetal harm when administered to a pregnant woman. Atenolol crosses the placental barrier and appears in cord blood. Administration of atenolol, starting in the second trimester of pregnancy, has been associated with the birth of infants that are small for gestational age. No studies have been performed on the use of atenolol in the first trimester and the possibility of fetal injury cannot be excluded. If this drug is used during pregnancy, or if the patient becomes pregnant while taking this drug, the patient should be apprised of the potential hazard to the fetus.

Atenolol has been shown to produce a dose-related increase in embryo/fetal resorptions in rats at doses equal to or greater than 50 mg/kg/day or 25 or more times the maximum recommended human antihypertensive dose*. Although similar effects were not seen in rabbits, the compound was not evaluated in rabbits at doses above 25 mg/kg/day or 12.5 times the maximum recommended human antihypertensive dose*.

*Based on the maximum dose of 100 mg/day in a 50 kg patient.

PRECAUTIONS

General: Patients already on a beta blocker must be evaluated carefully before TENORMIN is administered. Initial and subsequent TENORMIN dosages can be adjusted downward depending on clinical observations including pulse and blood pressure. TENORMIN may aggravate peripheral arterial circulatory disorders.

Impaired Renal Function: The drug should be used with caution in patients with impaired renal function. (See DOSAGE AND ADMINISTRATION.)

Drug Interactions: Catecholamine-depleting drugs (eg, reserpine) may have an additive effect when given with beta-blocking agents. Patients treated with TENORMIN plus a catecholamine depletor should therefore be closely observed for evidence of hypotension and/or marked bradycardia which may produce vertigo, syncope or postural hypotension.

Calcium channel blockers may also have an additive effect when given with TENORMIN (See WARNINGS.).

Beta blockers may exacerbate the rebound hypertension which can follow the withdrawal of clonidine. If the two drugs are coadministered, the beta blocker should be withdrawn several days before the gradual withdrawal of clonidine. If replacing clonidine by beta-blocker therapy, the introduction of beta blockers should be delayed for several days after clonidine administration has stopped.

Caution should be exercised with TENORMIN I.V. Injection when given in close proximity with drugs that may also have a depressant effect on myocardial contractility. On rare occasions, concomitant use of intravenous beta blockers and intravenous verapamil has resulted in serious adverse reactions, especially in patients with severe cardiomyopathy, congestive heart failure, or recent myocardial infarction.

Information on concurrent usage of atenolol and aspirin is limited. Data from several studies, ie, TIMI-II, ISIS-2, currently do not suggest any clinical interaction between aspirin and beta blockers in the acute myocardial infarction setting.

While taking beta blockers, patients with a history of anaphylactic reaction to a variety of allergens may have a more severe reaction on repeated challenge, either accidental, diagnostic or therapeutic. Such patients may be unresponsive to the usual doses of epinephrine used to treat the allergic reaction.

Carcinogenesis, Mutagenesis, Impairment of Fertility: Two long-term (maximum dosing duration of 18 or 24 months) rat studies and one long-term (maximum dosing duration of 18 months) mouse study, each employing dose levels as high as 300 mg/kg/day or 150 times the maximum recommended human antihypertensive dose* did not indicate a carcinogenic potential of atenolol. A third (24 month) rat study, employing doses of 500 and 1,500 mg/kg/day (250 and 750 times the maximum recommended human antihypertensive dose*) resulted in increased incidences of benign

| | Volunteered (US Studies) | | Total—Volunteered and Elicited (Foreign + US Studies) | |
|---|-----------------------------|---------------------------|---|---------------------------|
| | Atenolol (n = 164) % | Placebo (n = 206) % | Atenolol (n = 399) % | Placebo (n = 407) % |
| CARDIOVASCULAR | | | | |
| Bradycardia | 3 | 0 | 3 | 0 |
| Cold Extremities | 0 | 0.5 | 12 | 5 |
| Postural Hypotension | 2 | 1 | 4 | 5 |
| Leg Pain | 0 | 0.5 | 3 | 1 |
| CENTRAL NERVOUS SYSTEM/NEUROMUSCULAR | | | | |
| Dizziness | 4 | 1 | 13 | 6 |
| Vertigo | 2 | 0.5 | 2 | 0.2 |
| Light-headedness | 1 | 0 | 3 | 0.7 |
| Tiredness | 0.6 | 0.5 | 26 | 13 |
| Fatigue | 3 | 1 | 6 | 5 |
| Lethargy | 1 | 0 | 3 | 0.7 |
| Drowsiness | 0.6 | 0 | 2 | 0.5 |
| Depression | 0.6 | 0.5 | 12 | 9 |
| Dreaming | 0 | 0 | 3 | 1 |
| GASTROINTESTINAL | | | | |
| Diarrhea | 2 | 0 | 3 | 2 |
| Nausea | 4 | 1 | 3 | 1 |
| RESPIRATORY (see WARNINGS) | | | | |
| Wheeziness | 0 | 0 | 3 | 3 |
| Dyspnea | 0.6 | 1 | 6 | 4 |

adrenal medullary tumors in males and females, mammary fibroadenomas in females, and anterior pituitary adenomas and thyroid parafollicular cell carcinomas in males. No evidence of a mutagenic potential of atenolol was uncovered in the dominant lethal test (mouse), in vivo cytogenetics test (Chinese hamster) or Ames test (*S typhimurium*).

Fertility of male or female rats (evaluated at dose levels as high as 200 mg/kg/day or 100 times the maximum recommended human dose*) was unaffected by atenolol administration.

Animal Toxicology: Chronic studies employing oral atenolol performed in animals have revealed the occurrence of vacuolation of epithelial cells of Brunner's glands in the duodenum of both male and female dogs at all tested dose levels of atenolol (starting at 15 mg/kg/day or 7.5 times the maximum recommended human antihypertensive dose*) and increased incidence of atrial degeneration of hearts of male rats at 300 but not 150 mg atenolol/kg/day (150 and 75 times the maximum recommended human antihypertensive dose,* respectively).

*Based on the maximum dose of 100 mg/day in a 50 kg patient.

Usage in Pregnancy: Pregnancy Category D: See WARNINGS—Pregnancy and Fetal Injury.

Nursing Mothers: Atenolol is excreted in human breast milk at a ratio of 1.5 to 6.8 when compared to the concentration in plasma. Caution should be exercised when TENORMIN is administered to a nursing woman. Clinically significant bradycardia has been reported in breast fed infants. Premature infants, or infants with impaired renal function, may be more likely to develop adverse effects.

Pediatric Use: Safety and effectiveness in pediatric patients have not been established.

ADVERSE REACTIONS

Most adverse effects have been mild and transient.

The frequency estimates in the following table were derived from controlled studies in hypertensive patients in which adverse reactions were either volunteered by the patient (US studies) or elicited, eg, by checklist (foreign studies). The reported frequency of elicited adverse effects was higher for both TENORMIN and placebo-treated patients than when these reactions were volunteered. Where frequency of adverse effects of TENORMIN and placebo is similar, causal relationship to TENORMIN is uncertain. [See table above]

Acute Myocardial Infarction: In a series of investigations in the treatment of acute myocardial infarction, bradycardia and hypotension occurred more commonly, as expected for any beta blocker, in atenolol-treated patients than in control patients. However, these usually responded to atropine and/or to withholding further dosage of atenolol. The incidence of heart failure was not increased by atenolol. Inotropic agents were infrequently used. The reported frequency of these and other events occurring during these investigations is given in the following table.

In a study of 477 patients, the following adverse events were reported during either intravenous and/or oral atenolol administration:

[See first table at bottom of next page]

In the subsequent International Study of Infarct Survival (ISIS-1) including over 16,000 patients of whom 8,037 were randomized to receive TENORMIN treatment, the dosage of intravenous and subsequent oral TENORMIN was either discontinued or reduced for the following reasons:

[See second table at bottom of next page]

During postmarketing experience with TENORMIN, the following have been reported in temporal relationship to the use of the drug: elevated liver enzymes and/or bilirubin, hallucinations, headache, impotence, Peyronie's disease, postural hypotension which may be associated with syncope, psoriasisiform rash or exacerbation of psoriasis, psychoses, purpura, reversible alopecia, thrombocytopenia, visual

disturbances, and dry mouth. TENORMIN, like other beta blockers, has been associated with the development of antinuclear antibodies (ANA) and lupus syndrome.

POTENTIAL ADVERSE EFFECTS

In addition, a variety of adverse effects have been reported with other beta-adrenergic blocking agents, and may be considered potential adverse effects of TENORMIN.

Hematologic: Agranulocytosis.

Allergic: Fever, combined with aching and sore throat, laryngospasm, and respiratory distress.

Central Nervous System: Reversible mental depression progressing to catatonia; an acute reversible syndrome characterized by disorientation of time and place; short-term memory loss; emotional lability with slightly clouded sensorium; and decreased performance on neuropsychometric tests.

Gastrointestinal: Mesenteric arterial thrombosis, ischemic colitis.

Other: Erythematous rash, Raynaud's phenomenon.

Miscellaneous: There have been reports of skin rashes and/or dry eyes associated with the use of beta-adrenergic blocking drugs. The reported incidence is small, and in most cases, the symptoms have cleared when treatment was withdrawn. Discontinuance of the drug should be considered if any such reaction is not otherwise explicable. Patients should be closely monitored following cessation of therapy. (See DOSAGE AND ADMINISTRATION.)

The oculomucocutaneous syndrome associated with the beta blocker practolol has not been reported with TENORMIN. Furthermore, a number of patients who had previously demonstrated established practolol reactions were transferred to TENORMIN therapy with subsequent resolution or quiescence of the reaction.

OVERDOSAGE

Overdosage with TENORMIN has been reported with patients surviving acute doses as high as 5 g. One death was reported in a man who may have taken as much as 10 g acutely.

The predominant symptoms reported following TENORMIN overdose are lethargy, disorder of respiratory drive, wheezing, sinus pause and bradycardia. Additionally, common effects associated with overdosage of any beta-adrenergic blocking agent and which might also be expected in TENORMIN overdose are congestive heart failure, hypotension, bronchospasm and/or hypoglycemia.

Treatment of overdose should be directed to the removal of any unabsorbed drug by induced emesis, gastric lavage, or administration of activated charcoal. TENORMIN can be removed from the general circulation by hemodialysis. Other treatment modalities should be employed at the physician's discretion and may include:

BRADYCARDIA: Atropine intravenously. If there is no response to vagal blockade, give isoproterenol cautiously. In refractory cases, a transvenous cardiac pacemaker may be indicated.

HEART BLOCK (SECOND OR THIRD DEGREE): Isoproterenol or transvenous cardiac pacemaker.

CARDIAC FAILURE: Digitalize the patient and administer a diuretic. Glucagon has been reported to be useful.

HYPOTENSION: Vasopressors such as dopamine or norepinephrine (levarterenol). Monitor blood pressure continuously.

BRONCHOSPASM: A beta₂ stimulant such as isoproterenol or terbutaline and/or aminophylline.

HYPOGLYCEMIA: Intravenous glucose.

Based on the severity of symptoms, management may require intensive support care and facilities for applying cardiac and respiratory support.

Continued on next page

Tenormin—Cont.

DOSAGE AND ADMINISTRATION

Hypertension: The initial dose of TENORMIN is 50 mg given as one tablet a day either alone or added to diuretic therapy. The full effect of this dose will usually be seen within one to two weeks. If an optimal response is not achieved, the dosage should be increased to TENORMIN 100 mg given as one tablet a day. Increasing the dosage beyond 100 mg a day is unlikely to produce any further benefit.

TENORMIN may be used alone or concomitantly with other antihypertensive agents including thiazide-type diuretics, hydralazine, prazosin, and alpha-methyl dopa.

Angina Pectoris: The initial dose of TENORMIN is 50 mg given as one tablet a day. If an optimal response is not achieved within one week, the dosage should be increased to TENORMIN 100 mg given as one tablet a day. Some patients may require a dosage of 200 mg once a day for optimal effect.

Twenty-four hour control with once daily dosing is achieved by giving doses larger than necessary to achieve an immediate maximum effect. The maximum early effect on exercise tolerance occurs with doses of 50 to 100 mg, but at these doses the effect at 24 hours is attenuated, averaging about 50% to 75% of that observed with once a day oral doses of 200 mg.

Acute Myocardial Infarction: In patients with definite or suspected acute myocardial infarction, treatment with TENORMIN I.V. Injection should be initiated as soon as possible after the patient's arrival in the hospital and after eligibility is established. Such treatment should be initiated in a coronary care or similar unit immediately after the patient's hemodynamic condition has stabilized. Treatment should begin with the intravenous administration of 5 mg TENORMIN over 5 minutes followed by another 5 mg intravenous injection 10 minutes later. TENORMIN I.V. Injection should be administered under carefully controlled conditions including monitoring of blood pressure, heart rate, and electrocardiogram. Dilutions of TENORMIN I.V. Injection in Dextrose Injection USP, Sodium Chloride Injection USP, or Sodium Chloride and Dextrose Injection may be used. These admixtures are stable for 48 hours if they are not used immediately.

In patients who tolerate the full intravenous dose (10 mg), TENORMIN Tablets 50 mg should be initiated 10 minutes after the last intravenous dose followed by another 50 mg oral dose 12 hours later. Thereafter, TENORMIN can be given orally either 100 mg once daily or 50 mg twice a day for a further 6-9 days or until discharge from the hospital. If bradycardia or hypotension requiring treatment or any other untoward effects occur, TENORMIN should be discontinued. (See full prescribing information prior to initiating therapy with TENORMIN tablets.)

Data from other beta blocker trials suggest that if there is any question concerning the use of IV beta blocker or clinical estimate that there is a contraindication, the IV beta blocker may be eliminated and patients fulfilling the safety criteria may be given TENORMIN Tablets 50 mg twice daily or 100 mg once a day for at least seven days (if the IV dosing is excluded).

Although the demonstration of efficacy of TENORMIN is based entirely on data from the first seven postinfarction days, data from other beta blocker trials suggest that treatment with beta blockers that are effective in the postinfarction setting may be continued for one to three years if there are no contraindications.

TENORMIN is an additional treatment to standard coronary care unit therapy.

Elderly Patients or Patients with Renal Impairment: TENORMIN is excreted by the kidneys; consequently dosage should be adjusted in cases of severe impairment of renal function. Some reduction in dosage may also be appropriate for the elderly, since decreased kidney function is a physiologic consequence of aging. Atenolol excretion would be expected to decrease with advancing age.

No significant accumulation of TENORMIN occurs until creatinine clearance falls below 35 mL/min/1.73 m². Accumulation of atenolol and prolongation of its half-life were studied in subjects with creatinine clearance between 5 and 105 mL/min. Peak plasma levels were significantly increased in subjects with creatinine clearances below 30 mL/min.

The following maximum oral dosages are recommended for elderly, renally-impaired patients and for patients with renal impairment due to other causes:

| Creatinine Clearance (mL/min/1.73m ²) | Atenolol Elimination Half-Life (h) | Maximum Dosage |
|---|------------------------------------|----------------|
| 15-35 | 16-27 | 50 mg daily |
| <15 | >27 | 25 mg daily |

Some renally-impaired or elderly patients being treated for hypertension may require a lower starting dose of TENORMIN: 25 mg given as one tablet a day. If this 25 mg dose is used, assessment of efficacy must be made carefully. This should include measurement of blood pressure just prior to the next dose ("trough" blood pressure) to ensure that the treatment effect is present for a full 24 hours.

Although a similar dosage reduction may be considered for elderly and/or renally-impaired patients being treated for indications other than hypertension, data are not available for these patient populations.

Patients on hemodialysis should be given 25 mg or 50 mg after each dialysis; this should be done under hospital supervision as marked falls in blood pressure can occur.

Cessation of Therapy in Patients with Angina Pectoris: If withdrawal of TENORMIN therapy is planned, it should be achieved gradually and patients should be carefully observed and advised to limit physical activity to a minimum. Parenteral drug products should be inspected visually for particulate matter and discoloration prior to administration, whenever solution and container permit.

HOW SUPPLIED

TENORMIN Tablets: Tablets of 25 mg atenolol, NDC 0310-0107 (round, flat, uncoated white tablets identified with "T" debossed on one side and 107 debossed on the other side) are supplied in bottles of 100 tablets.

Tablets of 50 mg atenolol, NDC 0310-0105 (round, flat, uncoated white tablets identified with "TENORMIN" debossed

on one side and 105 debossed on the other side, bisected) are supplied in bottles of 100 tablets and 1000 tablets, and unit dose packages of 100 tablets.

Tablets of 100 mg atenolol, NDC 0310-0101 (round, flat, uncoated white tablets identified with "TENORMIN" debossed on one side and 101 debossed on the other side) are supplied in bottles of 100 tablets and unit dose packages of 100 tablets.

Store at controlled room temperature, 20-25°C (68-77°F) [see USP]. Dispense in well-closed, light resistant containers.

TENORMIN I.V. Injection: TENORMIN I.V. Injection, NDC 0310-0108, is supplied as 5 mg atenolol in 10 mL ampules of isotonic citrate-buffered aqueous solution.

Protect from light. Keep ampules in outer packaging until time of use. Store at room temperature 20-25°C (68-77°F) [see USP].

ZENECA

Manufactured for:
Zeneca Pharmaceuticals
 A Business Unit of Zeneca Inc.
 Wilmington, Delaware 19850-5437
 By: IPR Pharmaceuticals, Inc.
 Carolina, Puerto Rico 00984-1967
 Rev L 02/99 SIC 64108-01
 *64124-00 *Rev J 02/97
 *64124-00 *Rev J 02/97
 Shown in Product Identification Guide, page 305

ZESTORETIC®

[zes 'tor-etic] B
LISINAPRIL/HYDROCHLOROTHIAZIDE

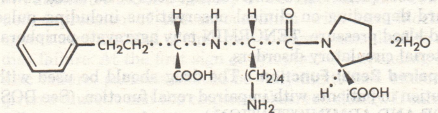
USE IN PREGNANCY

When used in pregnancy during the second and third trimesters, ACE inhibitors can cause injury and even death to the developing fetus. When pregnancy is detected, ZESTORETIC should be discontinued as soon as possible. See WARNINGS, Pregnancy, Lisinopril, Fetal/Neonatal Morbidity and Mortality.

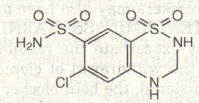
DESCRIPTION

ZESTORETIC® (Lisinopril and Hydrochlorothiazide) combines an angiotensin converting enzyme inhibitor, lisinopril, and a diuretic, hydrochlorothiazide.

Lisinopril, a synthetic peptide derivative, is an oral long-acting angiotensin converting enzyme inhibitor. It is chemically described as (S)-1-[N²-(1-carboxy-3-phenylpropyl)-L-lysyl]-L-proline dihydrate. Its empirical formula is C₂₁H₃₁N₃O₅·2H₂O and its structural formula is:



Lisinopril is a white to off-white, crystalline powder, with a molecular weight of 441.53. It is soluble in water, sparingly soluble in methanol, and practically insoluble in ethanol. Hydrochlorothiazide is 6-chloro-3,4-dihydro-2H-1,2,4-benzothiaziazine-7-sulfonamide 1,1-dioxide. Its empirical formula is C₇H₈ClN₃O₄S₂ and its structural formula is:



Hydrochlorothiazide is a white, or practically white, crystalline powder with a molecular weight of 297.72, which is slightly soluble in water, but freely soluble in sodium hydroxide solution.

ZESTORETIC is available for oral use in three tablet combinations of lisinopril with hydrochlorothiazide: ZESTORETIC 10-12.5 containing 10 mg lisinopril and 12.5 mg hydrochlorothiazide; ZESTORETIC 20-12.5 containing 20 mg lisinopril and 12.5 mg hydrochlorothiazide; and, ZESTORETIC 20-25 containing 20 mg lisinopril and 25 mg hydrochlorothiazide.

Inactive Ingredients:

10-12.5 Tablets—calcium phosphate, magnesium stearate, mannitol, red ferric oxide, starch, yellow ferric oxide.
 20-12.5 Tablets—calcium phosphate, magnesium stearate, mannitol, starch.
 20-25 Tablets—calcium phosphate, magnesium stearate, mannitol, red ferric oxide, starch, yellow ferric oxide.

CLINICAL PHARMACOLOGY

Lisinopril and Hydrochlorothiazide

As a result of its diuretic effects, hydrochlorothiazide increases plasma renin activity, increases aldosterone secretion, and decreases serum potassium. Administration of lisinopril blocks the renin-angiotensin aldosterone axis and tends to reverse the potassium loss associated with the diuretic.

In clinical studies, the extent of blood pressure reduction seen with the combination of lisinopril and hydrochlorothiazide was approximately additive. The ZESTORETIC 10-12.5 combination worked equally well in black and white patients. The ZESTORETIC 20-12.5 and ZESTORETIC

| | Conventional Therapy Plus Atenolol (n=244) | | Conventional Therapy Alone (n=233) | |
|--|--|---------|------------------------------------|--------|
| Bradycardia | 43 | (18%) | 24 | (10%) |
| Hypotension | 60 | (25%) | 34 | (15%) |
| Bronchospasm | 3 | (1.2%) | 2 | (0.9%) |
| Heart Failure | 46 | (19%) | 56 | (24%) |
| Heart Block | 11 | (4.5%) | 10 | (4.3%) |
| BBB + Major Axis Deviation | 16 | (6.6%) | 28 | (12%) |
| Supraventricular Tachycardia | 28 | (11.5%) | 45 | (19%) |
| Atrial Fibrillation | 12 | (5%) | 29 | (11%) |
| Atrial Flutter | 4 | (1.6%) | 7 | (3%) |
| Ventricular Tachycardia | 39 | (16%) | 52 | (22%) |
| Cardiac Reinfarction | 0 | (0%) | 6 | (2.6%) |
| Total Cardiac Arrests | 4 | (1.6%) | 16 | (6.9%) |
| Nonfatal Cardiac Arrests | 4 | (1.6%) | 12 | (5.1%) |
| Deaths | 7 | (2.9%) | 16 | (6.9%) |
| Cardiogenic Shock | 1 | (0.4%) | 4 | (1.7%) |
| Development of Ventricular Septal Defect | 0 | (0%) | 2 | (0.9%) |
| Development of Mitral Regurgitation | 0 | (0%) | 2 | (0.9%) |
| Renal Failure | 1 | (0.4%) | 0 | (0%) |
| Pulmonary Emboli | 3 | (1.2%) | 0 | (0%) |

| | Reasons for Reduced Dosage IV Atenolol Reduced Dose (<5 mg)* | | Oral Partial Dose | |
|------------------------------|--|--------|-------------------|---------|
| Hypotension/Bradycardia | 105 | (1.3%) | 1168 | (14.5%) |
| Cardiogenic Shock | 4 | (.04%) | 35 | (.44%) |
| Reinfarction | 0 | (0%) | 5 | (.06%) |
| Cardiac Arrest | 5 | (.06%) | 28 | (.34%) |
| Heart Block (> first degree) | 5 | (.06%) | 143 | (1.7%) |
| Cardiac Failure | 1 | (.01%) | 233 | (2.9%) |
| Arrhythmias | 3 | (.04%) | 22 | (.27%) |
| Bronchospasm | 1 | (.01%) | 50 | (.62%) |

* Full dosage was 10 mg and some patients received less than 10 mg but more than 5 mg.