

Figure 1

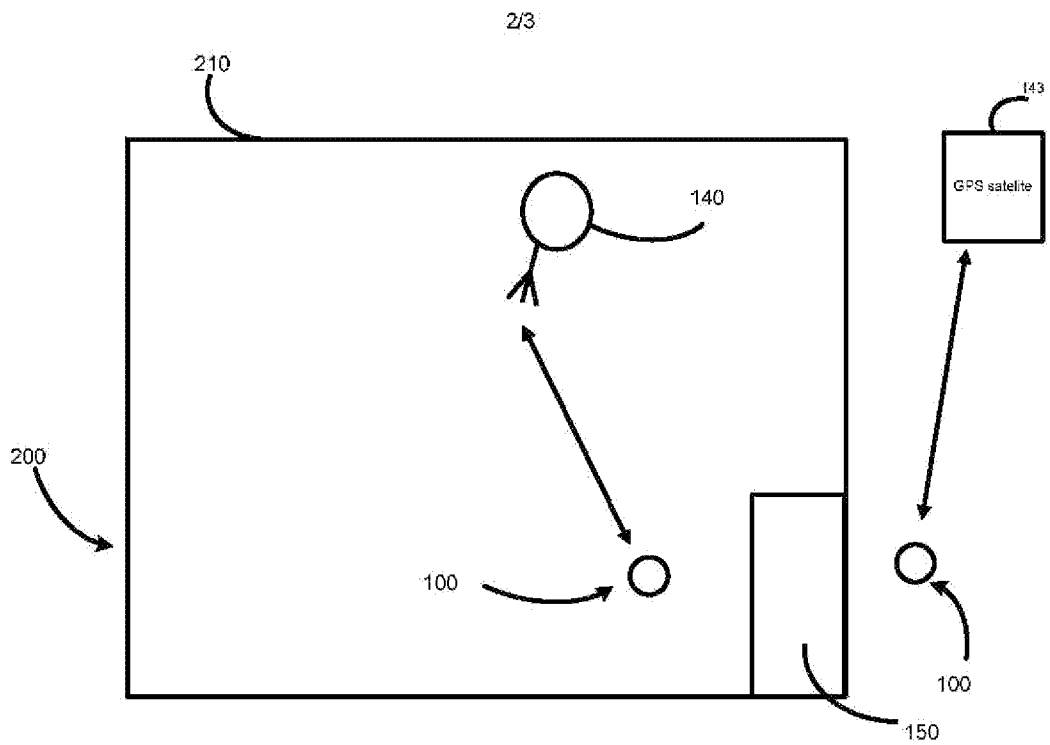


Figure 2

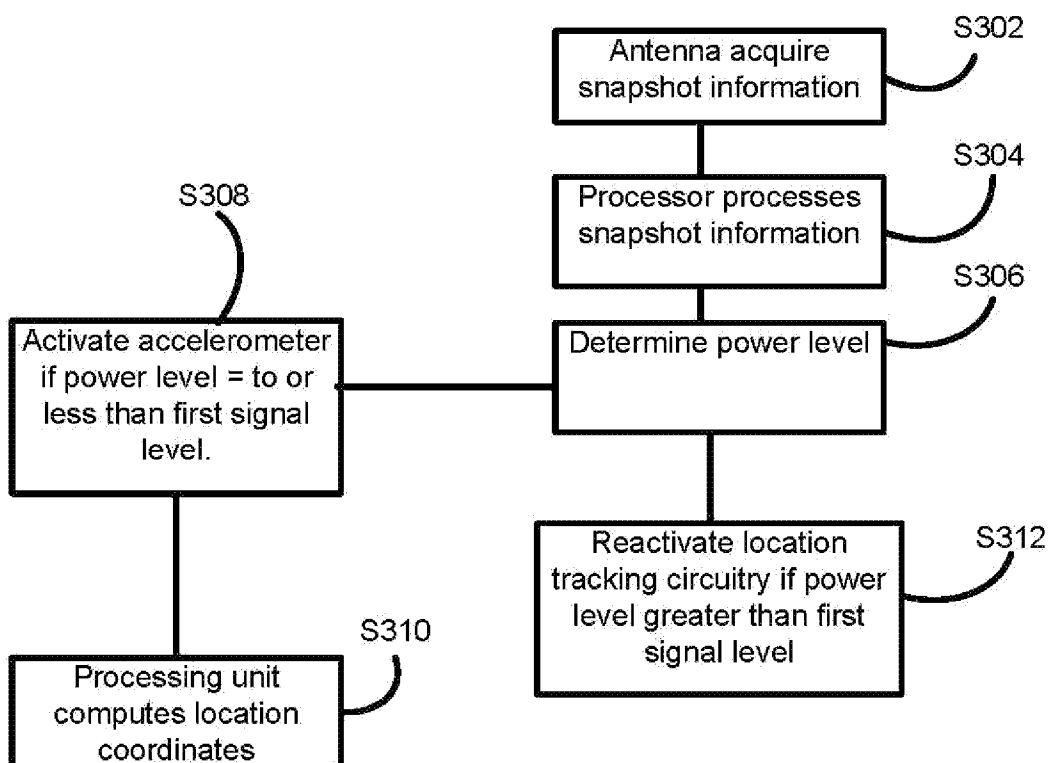


Figure 3

# APPARATUS AND METHOD FOR DETERMINING LOCATION AND TRACKING COORDINATES OF A TRACKING DEVICE

## Related Applications

**[0001]** This application is a Divisional of, claims priority to, and herein incorporates in its entirety US patent application Serial No. 11/969,905 filed January 6, 2008.

**[0002]** This application also incorporates by reference in their entirety: U.S. patent application Serial No. 11/753,979 filed on May 25, 2007, entitled "Apparatus and Method for Providing Location Information on Individuals and Objects Using Tracking Devices"; US patent application Serial No. 11/933,024 filed on October 31, 2007, entitled "Apparatus and Method for Manufacturing an Electronic Package", US patent application Serial No. 11/784,400 filed on April 5, 2007, entitled "Communication System and Method Including Dual Mode Capability"; US patent application Serial No. 11/784,318 filed on April 5, 2007, entitled "Communication System and Method Including Communication Billing Options"; and US patent application Serial No. 11/935, 901 filed on November 6, 2007, entitled "System and Method for Creating and Managing a Personalized Web Interface for Monitoring Location Information on Individuals and Objects Using Tracking Devices."

## Background of the Invention

Field of the Invention

**[0003]** The invention relates generally to the field of location and tracking communication systems. More particularly, the present invention relates in one embodiment

to an accelerometer incorporated as part of portable electronic tracking device for individuals and objects to improve monitoring by a wireless location and tracking system and/or wireless communication system (WCS).

#### Description of Related Technology

**[0004]** Accelerometers are conventionally integrated into electronics systems that are part of a vehicle, vessel, and airplane to detect, measure, and monitor deflections, vibrations, and acceleration. Accelerometers, for example, may include one or more Micro Electro-Mechanical System (MEMS) devices. In particular, MEMS devices include one or more suspended cantilever beams (e.g., single-axis, dual-axis, and three-axis models), as well as deflection sensing circuitry. Accelerometers are utilized by a multitude of electronics manufacturers.

**[0005]** For instance, electronics gaming manufacturers exploit an accelerometer's deflection sensing capability, for instance, to measure device tilt and control game functionality. In another instance, consumer electronics manufacturers, e.g., Apple, Ericsson, and Nike, incorporate accelerometers in personal electronic devices, e.g., Apple iPhone, to provide a changeable screen display orientation that toggles between portrait and landscape layout window settings; to manage human inputs through a human interface, e.g., Apple iPod® touch screen interface; and to measure game movement and tilt, e.g., Wii gaming remotes. Still others including automobile electronics circuitry manufacturers utilize MEMS accelerometers to initiate airbag deployment in accordance with a detected collision severity level by measuring negative vehicle acceleration.

# Explore Litigation Insights

Docket Alarm provides insights to develop a more informed litigation strategy and the peace of mind of knowing you're on top of things.

## Real-Time Litigation Alerts



Keep your litigation team up-to-date with **real-time alerts** and advanced team management tools built for the enterprise, all while greatly reducing PACER spend.

Our comprehensive service means we can handle Federal, State, and Administrative courts across the country.

## Advanced Docket Research



With over 230 million records, Docket Alarm's cloud-native docket research platform finds what other services can't. Coverage includes Federal, State, plus PTAB, TTAB, ITC and NLRB decisions, all in one place.

Identify arguments that have been successful in the past with full text, pinpoint searching. Link to case law cited within any court document via Fastcase.

## Analytics At Your Fingertips



Learn what happened the last time a particular judge, opposing counsel or company faced cases similar to yours.

Advanced out-of-the-box PTAB and TTAB analytics are always at your fingertips.

## API

Docket Alarm offers a powerful API (application programming interface) to developers that want to integrate case filings into their apps.

## LAW FIRMS

Build custom dashboards for your attorneys and clients with live data direct from the court.

Automate many repetitive legal tasks like conflict checks, document management, and marketing.

## FINANCIAL INSTITUTIONS

Litigation and bankruptcy checks for companies and debtors.

## E-DISCOVERY AND LEGAL VENDORS

Sync your system to PACER to automate legal marketing.