



US 20090189807A1

(19) **United States**

(12) **Patent Application Publication**  
Scalisi et al.

(10) **Pub. No.: US 2009/0189807 A1**

(43) **Pub. Date: Jul. 30, 2009**

(54) **APPARATUS AND METHOD FOR  
ADJUSTING REFRESH RATE OF LOCATION  
COORDINATES OF A TRACKING DEVICE**

11/784,400, filed on Apr. 5, 2007, Continuation-in-part of application No. 11/935,901, filed on Nov. 6, 2007.

(76) Inventors: **Joseph F. Scalisi**, Yorba Linda, CA (US); **Roger B. Anderson**, Arcadia, CA (US)

**Publication Classification**

(51) **Int. Cl.**  
**G01S 1/00** (2006.01)

(52) **U.S. Cl.** ..... **342/357.07**

Correspondence Address:  
**Law Office Of Robert E. Kasody,**  
**Professional Corporation**  
**6601 Center Drive West, Suite #500**  
**Los Angeles, CA 90045 (US)**

(57) **ABSTRACT**

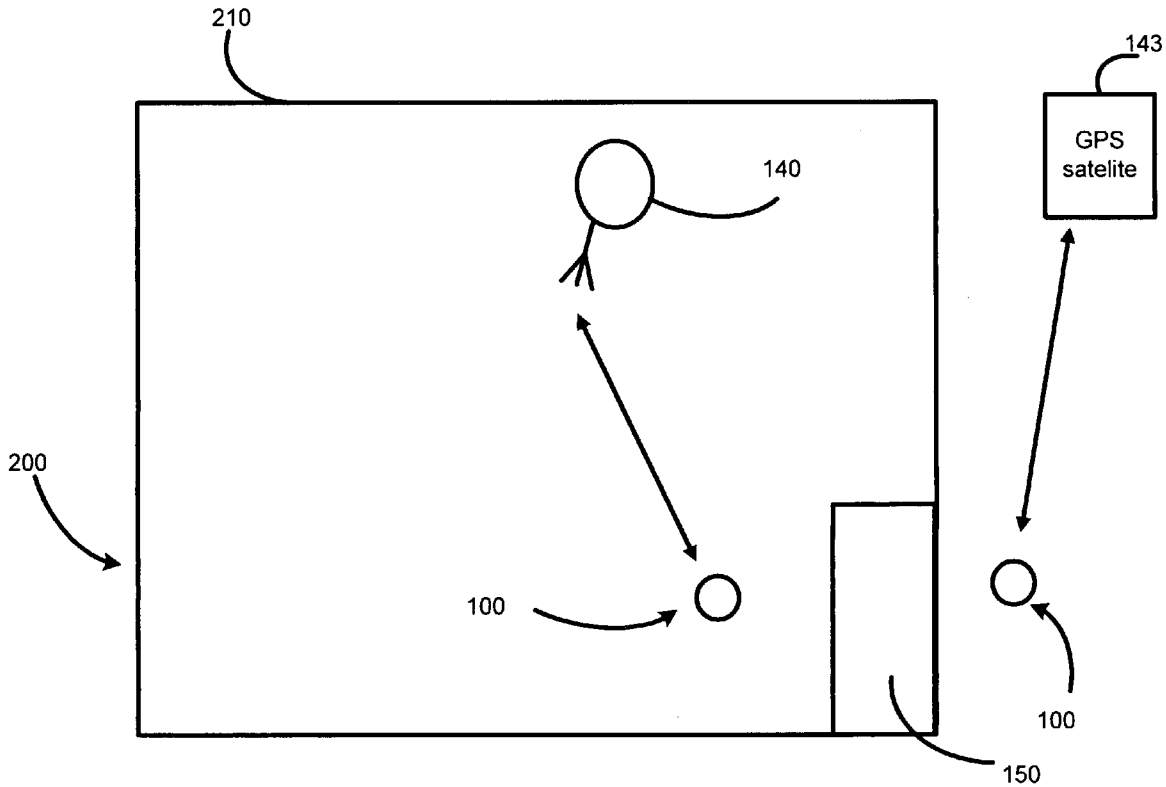
A local charging management device manages electrical resource capability for an electronic tracking device. In one embodiment, the electronic tracking device includes a battery power monitor, a charging unit; and an electrical power resource management component. The electrical power resource management component adjusts cycle timing of one or more of control parameters for the tracking device. Control parameters include request rate of location coordinate packets to a target host and a listen rate of the location coordinate packets. The adjustment is responsive to an estimated charge level of the charging unit, velocity of the device, and user desired inputs.

(21) Appl. No.: **12/419,451**

(22) Filed: **Apr. 7, 2009**

**Related U.S. Application Data**

(63) Continuation-in-part of application No. 11/969,905, filed on Jan. 6, 2008, Continuation-in-part of application No. 11/753,979, filed on May 25, 2007, Continuation-in-part of application No. 11/933,024, filed on Oct. 31, 2007, Continuation-in-part of application No.



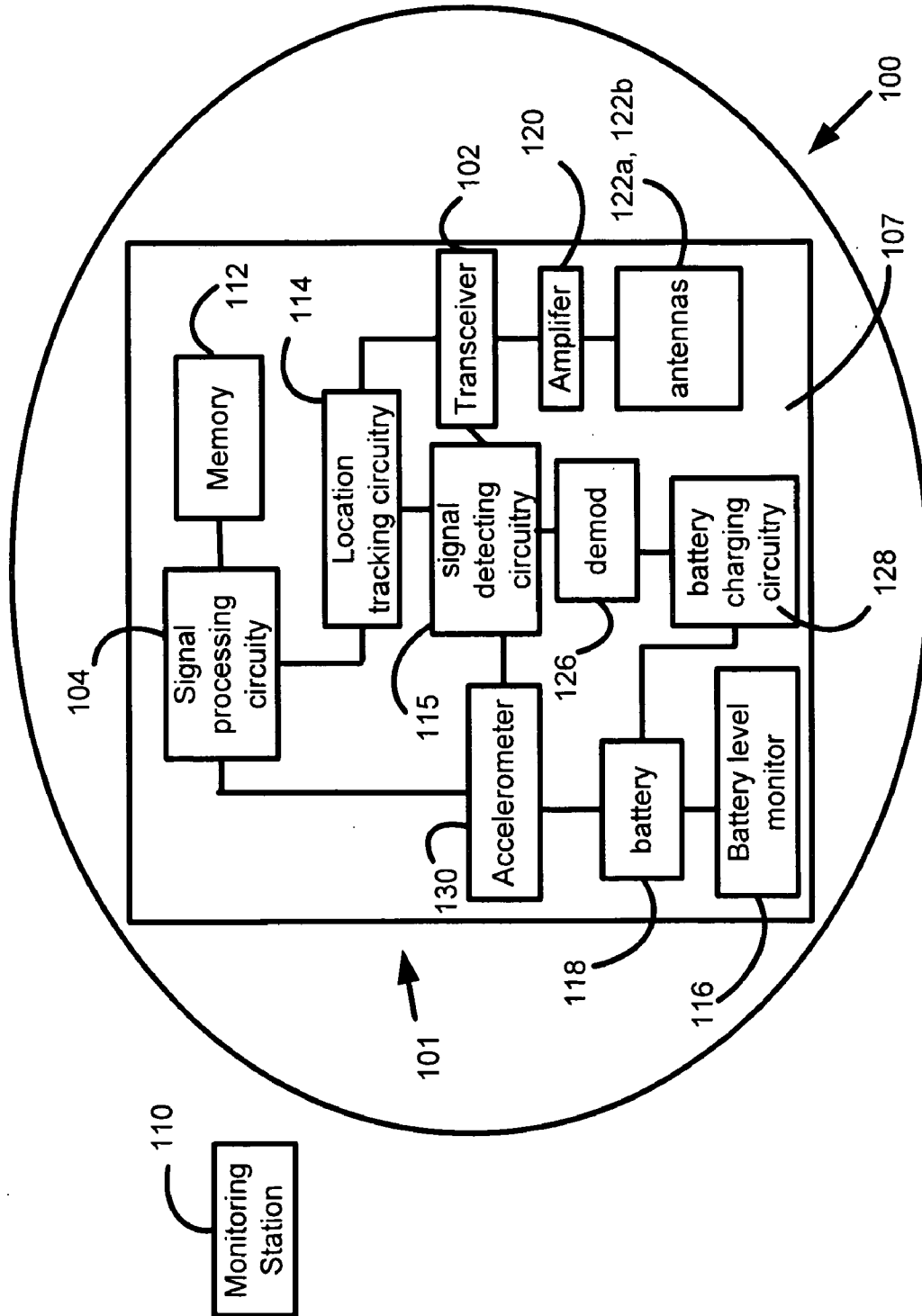


Figure 1

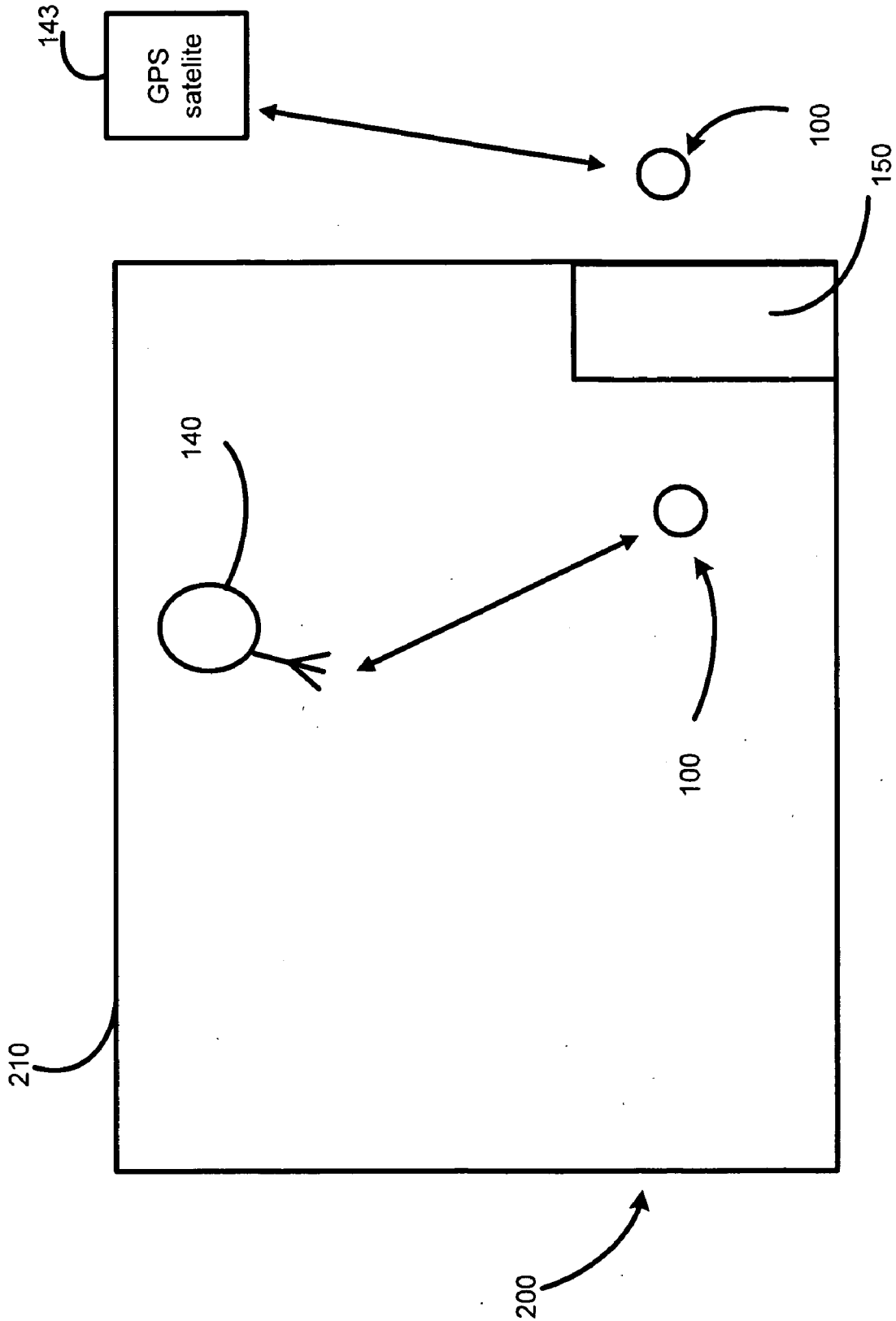


Figure 2

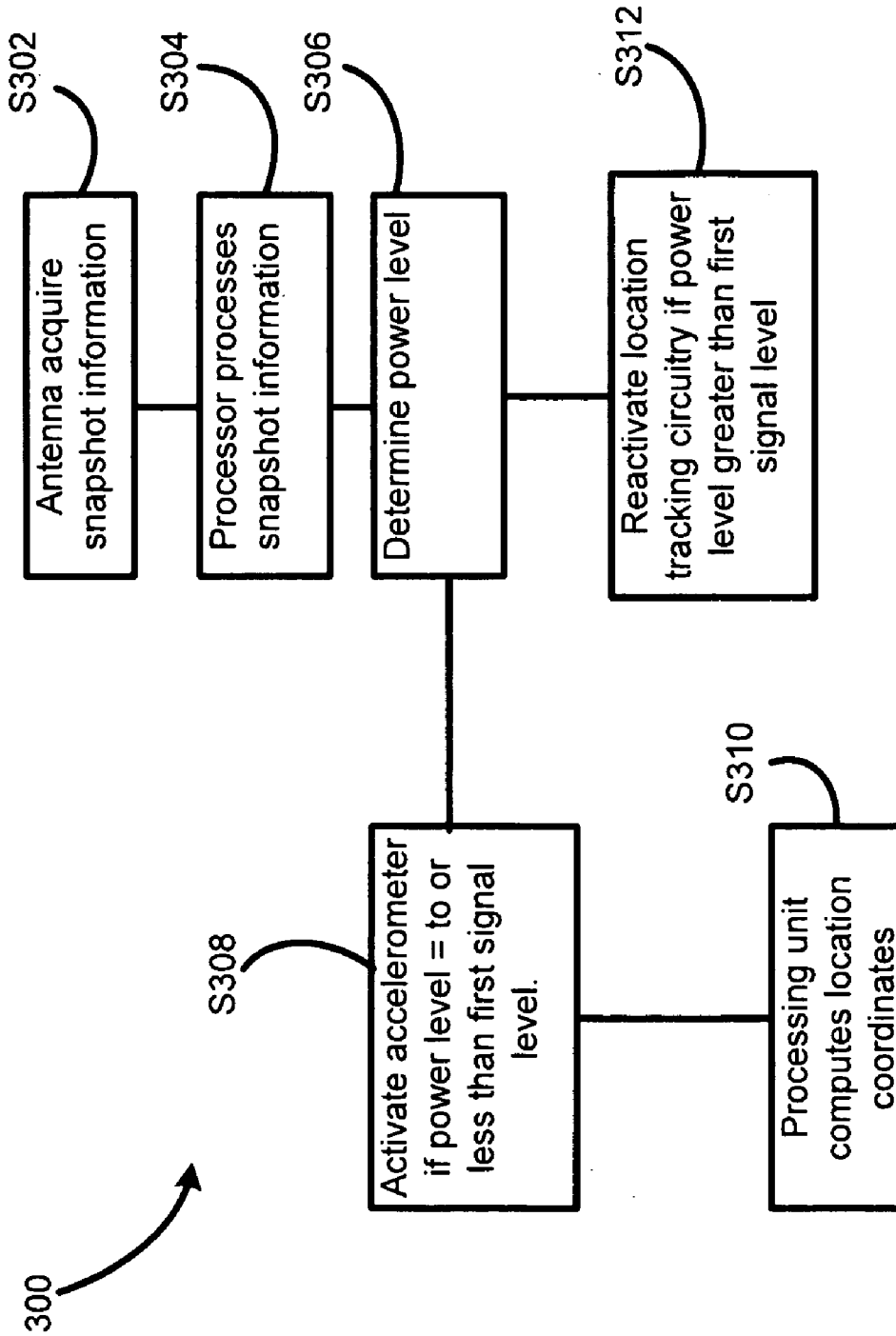
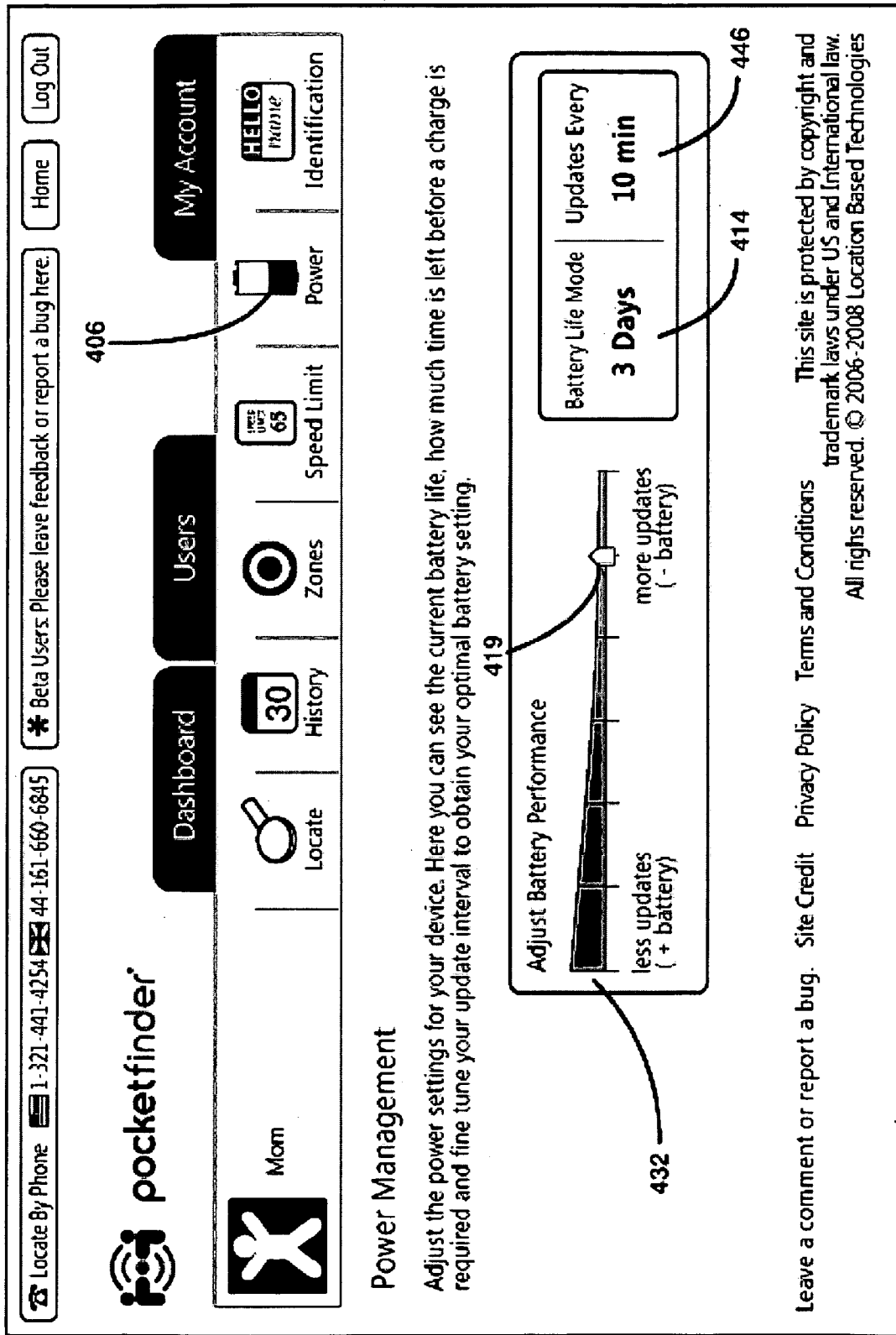


Figure 3



### Power Management

Adjust the power settings for your device. Here you can see the current battery life, how much time is left before a charge is required and fine tune your update interval to obtain your optimal battery setting.

Leave a comment or report a bug. Site Credit Privacy Policy Terms and Conditions  
This site is protected by copyright and trademark laws under US and International law.  
All rights reserved. © 2006-2008 Location Based Technologies

Figure 4

# Explore Litigation Insights

Docket Alarm provides insights to develop a more informed litigation strategy and the peace of mind of knowing you're on top of things.

## Real-Time Litigation Alerts



Keep your litigation team up-to-date with **real-time alerts** and advanced team management tools built for the enterprise, all while greatly reducing PACER spend.

Our comprehensive service means we can handle Federal, State, and Administrative courts across the country.

## Advanced Docket Research



With over 230 million records, Docket Alarm's cloud-native docket research platform finds what other services can't. Coverage includes Federal, State, plus PTAB, TTAB, ITC and NLRB decisions, all in one place.

Identify arguments that have been successful in the past with full text, pinpoint searching. Link to case law cited within any court document via Fastcase.

## Analytics At Your Fingertips



Learn what happened the last time a particular judge, opposing counsel or company faced cases similar to yours.

Advanced out-of-the-box PTAB and TTAB analytics are always at your fingertips.

## API

Docket Alarm offers a powerful API (application programming interface) to developers that want to integrate case filings into their apps.

## LAW FIRMS

Build custom dashboards for your attorneys and clients with live data direct from the court.

Automate many repetitive legal tasks like conflict checks, document management, and marketing.

## FINANCIAL INSTITUTIONS

Litigation and bankruptcy checks for companies and debtors.

## E-DISCOVERY AND LEGAL VENDORS

Sync your system to PACER to automate legal marketing.