



US007196661B2

(12) **United States Patent**  
**Harvey**

(10) **Patent No.:** **US 7,196,661 B2**  
(45) **Date of Patent:** **Mar. 27, 2007**

(54) **SECURITY SYSTEM INCLUDING A METHOD AND SYSTEM FOR ACQUIRING GPS SATELLITE POSITION**

5,650,770 A \* 7/1997 Schlager et al. .... 340/573.1  
5,793,813 A \* 8/1998 Cleave ..... 375/259  
6,239,700 B1 \* 5/2001 Hoffman et al. .... 340/539.13  
6,518,889 B2 \* 2/2003 Schlager et al. .... 340/573.1

(76) Inventor: **A. Stephen Harvey**, 33545 Second Avenue, Mission BC (CA) V2V 6J3

(\* ) Notice: Subject to any disclaimer, the term of this patent is extended or adjusted under 35 U.S.C. 154(b) by 193 days.

\* cited by examiner

*Primary Examiner*—Dao L. Phan  
(74) *Attorney, Agent, or Firm*—The Nath Law Group; Robert P. Cogan

(21) Appl. No.: **10/867,320**

(22) Filed: **Jun. 14, 2004**

(57) **ABSTRACT**

(65) **Prior Publication Data**  
US 2004/0252053 A1 Dec. 16, 2004

A security system and a method and apparatus utilize a transmitter and a receiver with a GPS sub-system in a GPS appliance. Ephemeris and almanac data are updated at preprogrammed times within coordinated windows of opportunity. Each GPS receiver is preferably kept in an inactive state to reduce power consumption except at the preprogrammed times and uses time-compressed formats of GPS ephemeris data. An additional receiver makes possible the use of a coordinated window of opportunity whereby the receiver is set to an active state to receive complete ephemeris data sets when transmitted. The security system monitors conditions. Security sensors may respond to a condition to “awaken” a transmitter that may then transmit a report providing the location of the appliance. The report may include manifest information such as the identity of a container to which the GPS system is affixed, the sensor reporting the breach and its location.

**Related U.S. Application Data**

(60) Provisional application No. 60/478,272, filed on Jun. 13, 2003, provisional application No. 60/478,727, filed on Jun. 13, 2003.

(51) **Int. Cl.**  
**G01S 1/00** (2006.01)

(52) **U.S. Cl.** ..... **342/357.15**

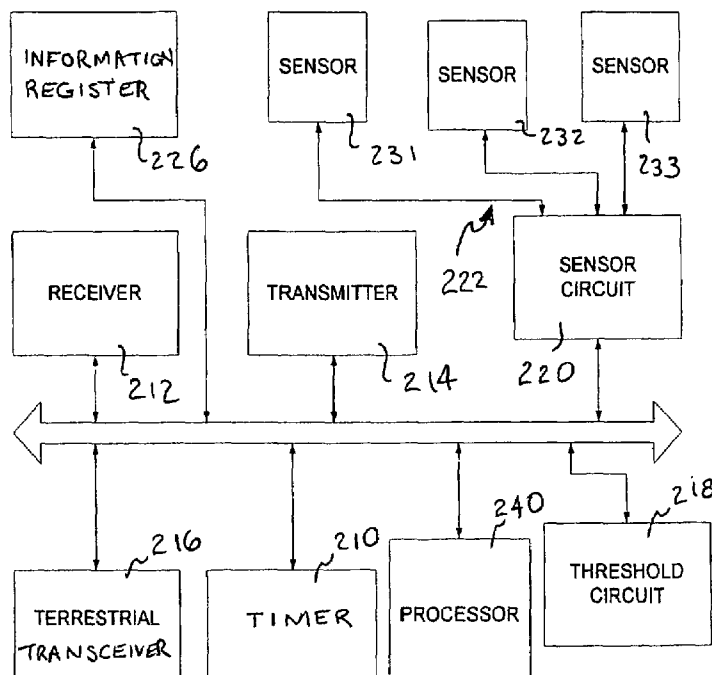
(58) **Field of Classification Search** ..... 342/357.06, 342/357.09, 357.12, 357.15; 701/213, 215  
See application file for complete search history.

(56) **References Cited**

**U.S. PATENT DOCUMENTS**

5,477,458 A \* 12/1995 Loomis ..... 701/215

**15 Claims, 7 Drawing Sheets**



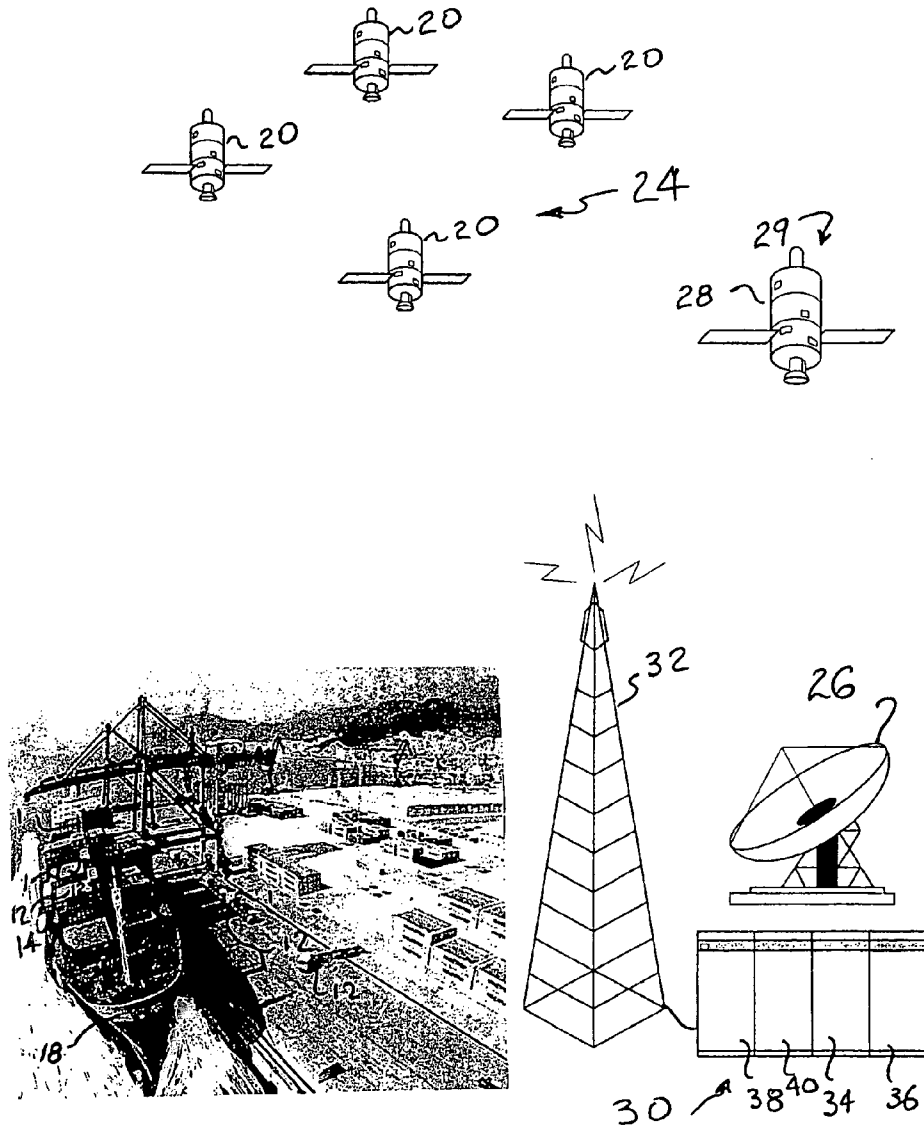


FIG. 1

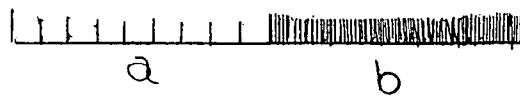
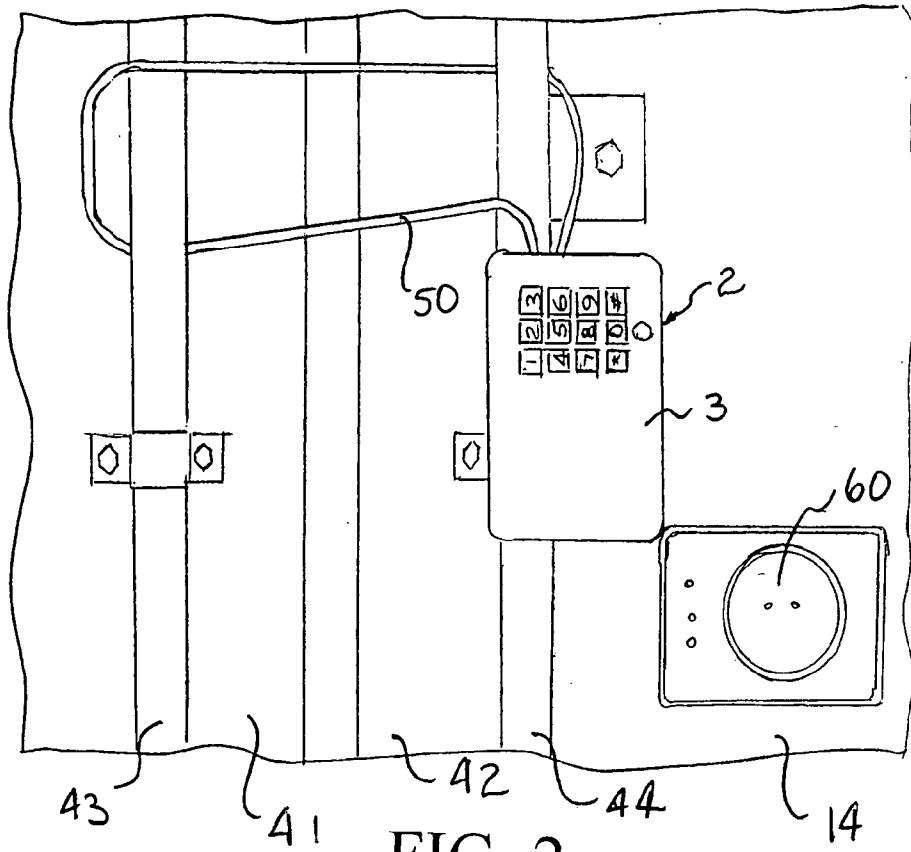


FIG. 3

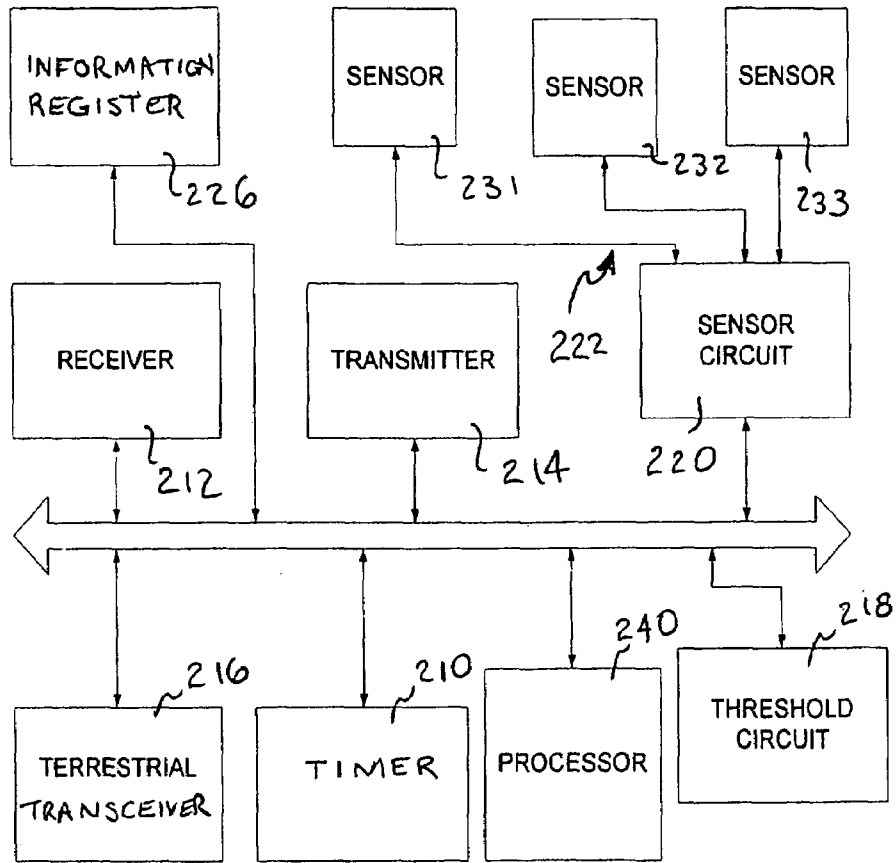


FIG. 4

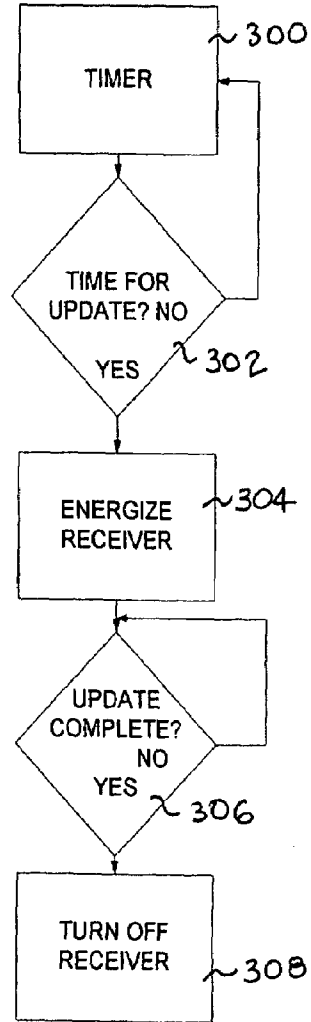


FIG. 5

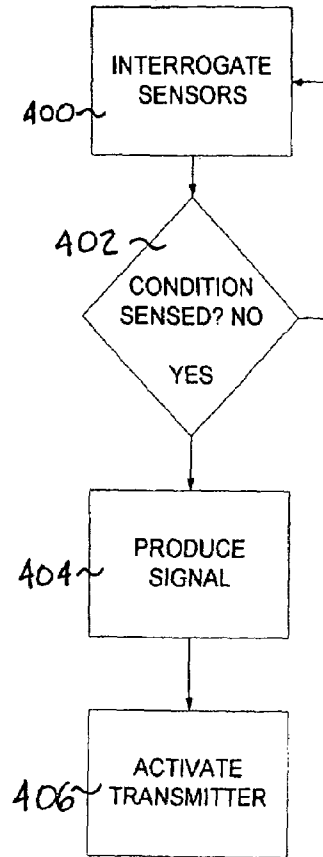


FIG. 6

# Explore Litigation Insights

Docket Alarm provides insights to develop a more informed litigation strategy and the peace of mind of knowing you're on top of things.

## Real-Time Litigation Alerts



Keep your litigation team up-to-date with **real-time alerts** and advanced team management tools built for the enterprise, all while greatly reducing PACER spend.

Our comprehensive service means we can handle Federal, State, and Administrative courts across the country.

## Advanced Docket Research



With over 230 million records, Docket Alarm's cloud-native docket research platform finds what other services can't. Coverage includes Federal, State, plus PTAB, TTAB, ITC and NLRB decisions, all in one place.

Identify arguments that have been successful in the past with full text, pinpoint searching. Link to case law cited within any court document via Fastcase.

## Analytics At Your Fingertips



Learn what happened the last time a particular judge, opposing counsel or company faced cases similar to yours.

Advanced out-of-the-box PTAB and TTAB analytics are always at your fingertips.

## API

Docket Alarm offers a powerful API (application programming interface) to developers that want to integrate case filings into their apps.

## LAW FIRMS

Build custom dashboards for your attorneys and clients with live data direct from the court.

Automate many repetitive legal tasks like conflict checks, document management, and marketing.

## FINANCIAL INSTITUTIONS

Litigation and bankruptcy checks for companies and debtors.

## E-DISCOVERY AND LEGAL VENDORS

Sync your system to PACER to automate legal marketing.