



United States Patent [19]
Hayasaka

[11] **Patent Number:** **5,845,142**
[45] **Date of Patent:** **Dec. 1, 1998**

[54] **PORTABLE TERMINAL TO CONTROL COMMUNICATION BASED ON RESIDUAL BATTERY CAPACITY**

4,949,046 8/1990 Seyfang 324/427
4,984,185 1/1991 Saito 364/707
5,167,024 11/1992 Smith et al. 395/375
5,230,074 7/1993 Canova, Jr. et al. 395/750

[75] Inventor: **Hisashi Hayasaka**, Kawasaki, Japan

FOREIGN PATENT DOCUMENTS

[73] Assignee: **Fujitsu Limited**, Kawasaki, Japan

1-188918 7/1989 Japan .
1-191913 8/1989 Japan .
2-27413 1/1990 Japan .

[21] Appl. No.: **921,337**

[22] Filed: **Aug. 29, 1997**

Primary Examiner—Gopal C. Ray
Attorney, Agent, or Firm—Staas & Halsey

Related U.S. Application Data

[57] **ABSTRACT**

[63] Continuation of Ser. No. 613,076, Mar. 8, 1996, abandoned, which is a continuation of Ser. No. 84,473, Jul. 1, 1993, abandoned.

In data communication with power furnished from a built-in battery, the residual battery capacity is detected as power that can be currently supplied by the battery. In addition, power necessary for communication is forecast from the quantity of data for communication. The currently residual battery capacity and the necessary power for communication are compared. If the former is in excess of the latter, the communication operation is allowed, while otherwise it is inhibited. When the communication operation is inhibited, functions of parts irrelevant to communication operation are suppressed or reduced. When function suppression is done, the necessary power for communication is re-forecast for comparison from current consumed by other parts than those functions suppressed or reduced.

[30] **Foreign Application Priority Data**

Aug. 21, 1992 [JP] Japan 222587

[51] **Int. Cl.⁶** **G06F 1/26**; G06F 1/32

[52] **U.S. Cl.** **395/750.08**; 395/750.06;
364/707

[58] **Field of Search** 395/750.08, 750.06,
395/750.03; 364/707, 492

[56] **References Cited**

U.S. PATENT DOCUMENTS

4,907,183 3/1990 Tanaka 364/707

14 Claims, 5 Drawing Sheets

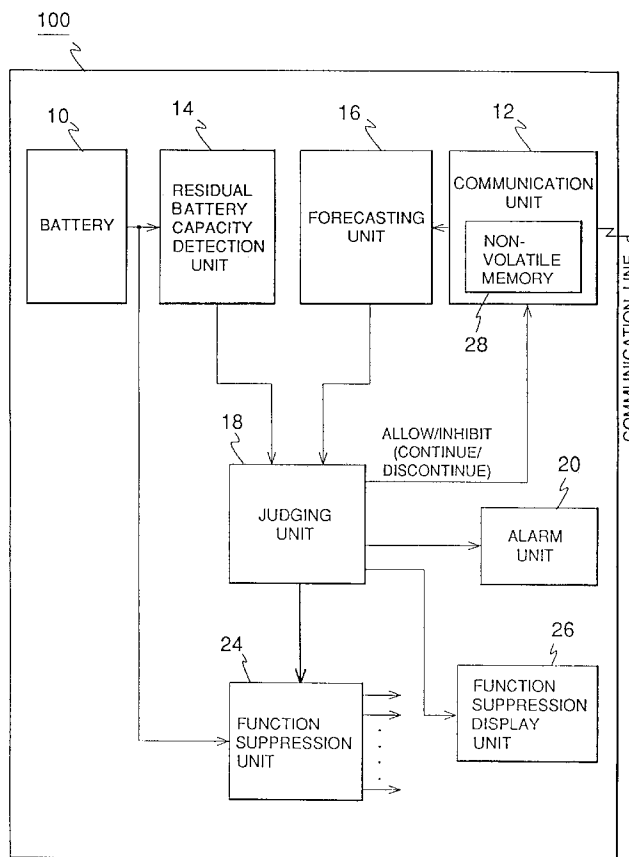


FIG. 1

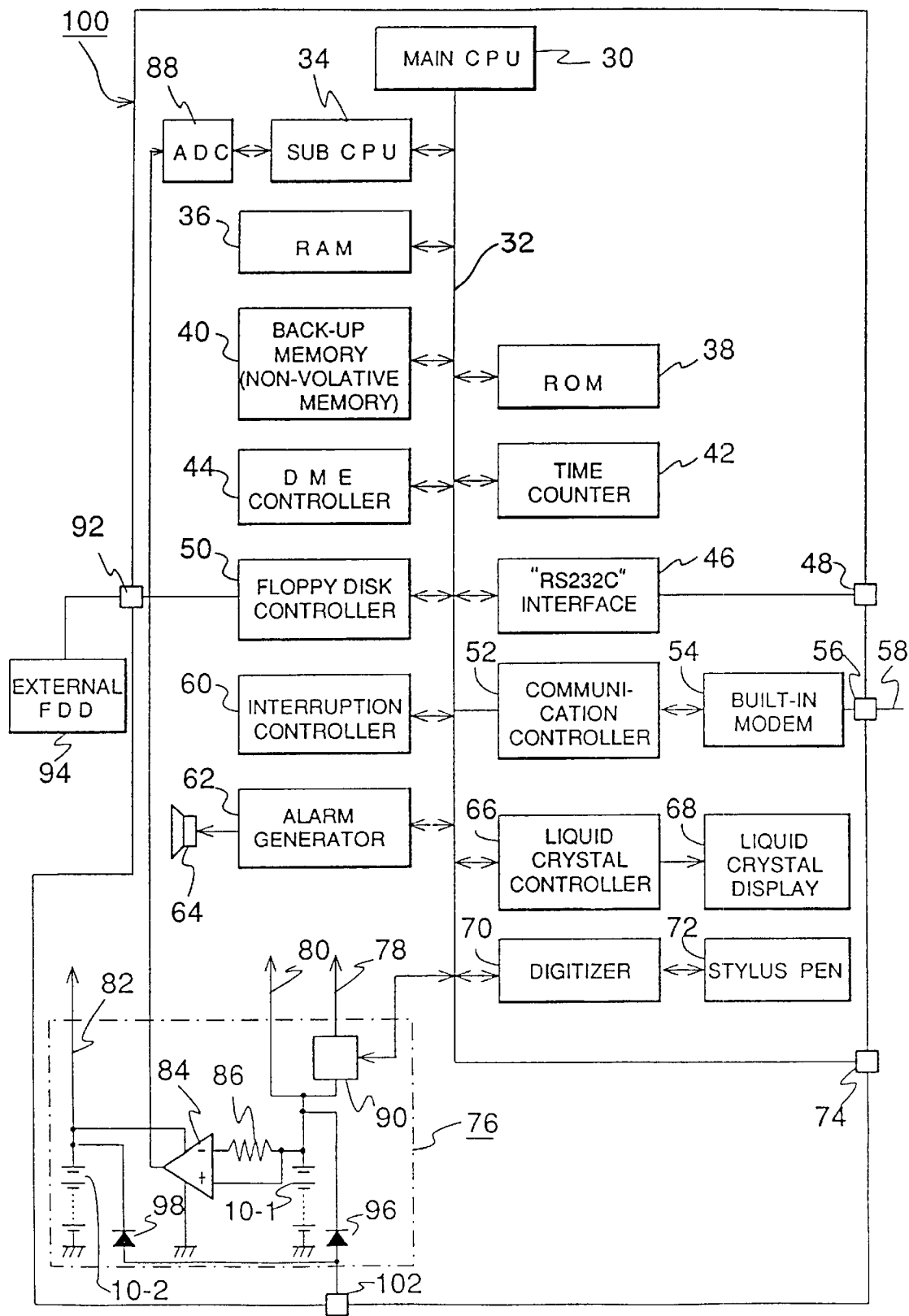


FIG. 2

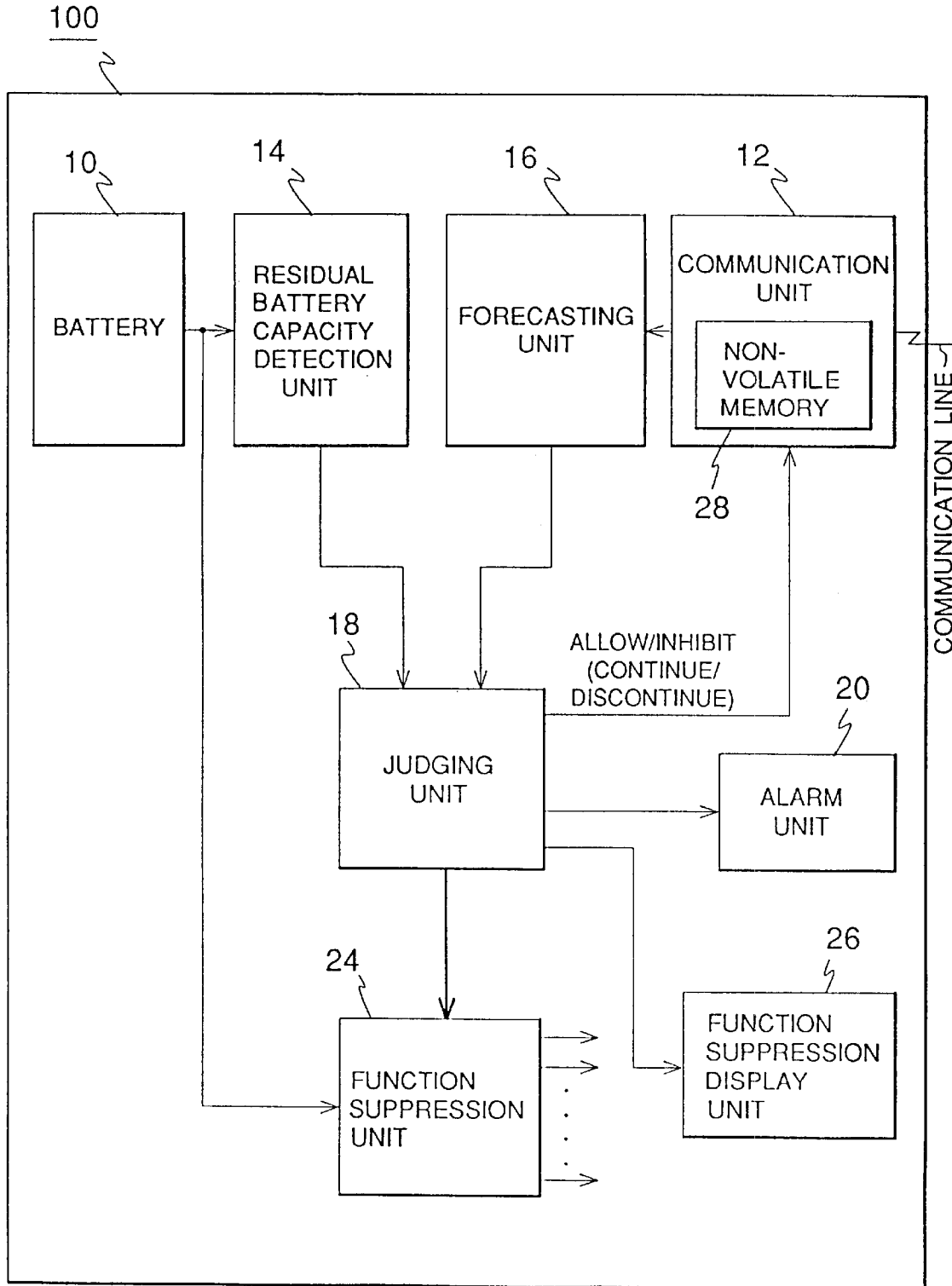


FIG. 3

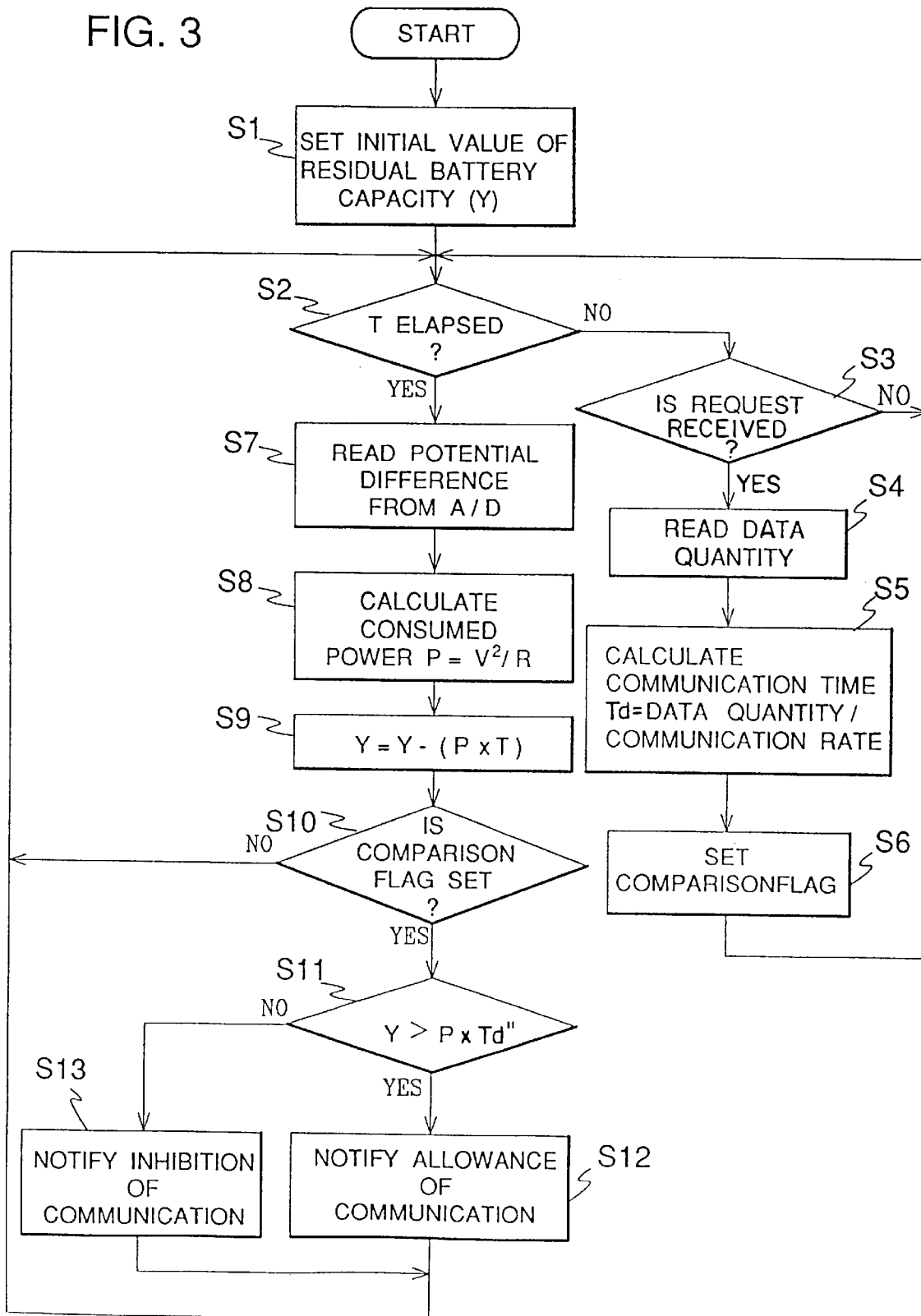
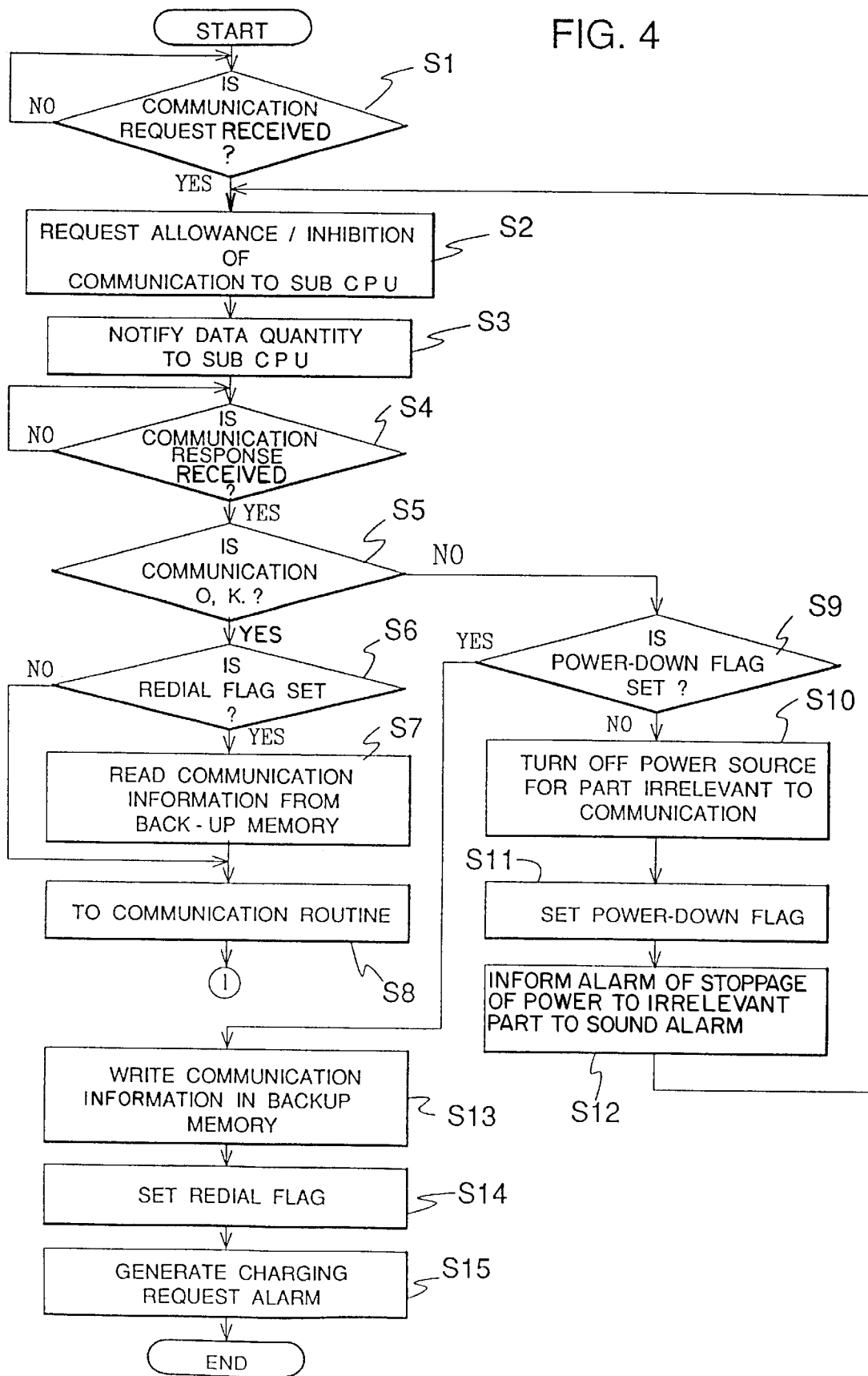


FIG. 4



Explore Litigation Insights

Docket Alarm provides insights to develop a more informed litigation strategy and the peace of mind of knowing you're on top of things.

Real-Time Litigation Alerts



Keep your litigation team up-to-date with **real-time alerts** and advanced team management tools built for the enterprise, all while greatly reducing PACER spend.

Our comprehensive service means we can handle Federal, State, and Administrative courts across the country.

Advanced Docket Research



With over 230 million records, Docket Alarm's cloud-native docket research platform finds what other services can't. Coverage includes Federal, State, plus PTAB, TTAB, ITC and NLRB decisions, all in one place.

Identify arguments that have been successful in the past with full text, pinpoint searching. Link to case law cited within any court document via Fastcase.

Analytics At Your Fingertips



Learn what happened the last time a particular judge, opposing counsel or company faced cases similar to yours.

Advanced out-of-the-box PTAB and TTAB analytics are always at your fingertips.

API

Docket Alarm offers a powerful API (application programming interface) to developers that want to integrate case filings into their apps.

LAW FIRMS

Build custom dashboards for your attorneys and clients with live data direct from the court.

Automate many repetitive legal tasks like conflict checks, document management, and marketing.

FINANCIAL INSTITUTIONS

Litigation and bankruptcy checks for companies and debtors.

E-DISCOVERY AND LEGAL VENDORS

Sync your system to PACER to automate legal marketing.