



[54] METHOD AND APPARATUS FOR PROTECTING DATA USING LOCK VALUES IN A COMPUTER SYSTEM

[75] Inventors: Mark S. Shipman, Hillsboro; Orville H. Christeson; Timothy E. W. Labatte, both of Portland, all of Oreg.

[73] Assignee: Intel Corporation, Santa Clara, Calif.

[*] Notice: This patent issued on a continued prosecution application filed under 37 CFR 1.53(d), and is subject to the twenty year patent term provisions of 35 U.S.C. 154(a)(2).

[21] Appl. No.: 623,930

[22] Filed: Mar. 28, 1996

[51] Int. Cl.⁶ G06F 13/00

[52] U.S. Cl. 395/726; 395/520

[58] Field of Search 395/700, 726, 395/481, 961, 520, 326, 856

[56] References Cited

U.S. PATENT DOCUMENTS

5,557,674 9/1996 Yeow 380/4
5,623,673 4/1997 Gephardt et al. 395/733

OTHER PUBLICATIONS

"Desktop Management BIOS Specification", Version 2.0, Sep. 27, 1995, pp. 1-53.

"The Desktop Management Interface And The Management Information Format Files," The Desktop Management Task Force (DMTF) Sep. 94 pp. 1-9.

"AMIBIOS® 95 Firmware Takes DMI Support to the Next Level," [http://www.megatrends.com/press_releases/Mar. 28, 1996-2.html](http://www.megatrends.com/press_releases/Mar.28,1996-2.html) Mar. 28, 1996.

"Phoenix Technologies Releases DMI BIOS Specification," Press Release, <http://www.ptltd.com/news/dmi.html> Nov. 14, 1994.

Desktop Management Interface Specification Draft 3.8.2, Mar. 5, 1993.

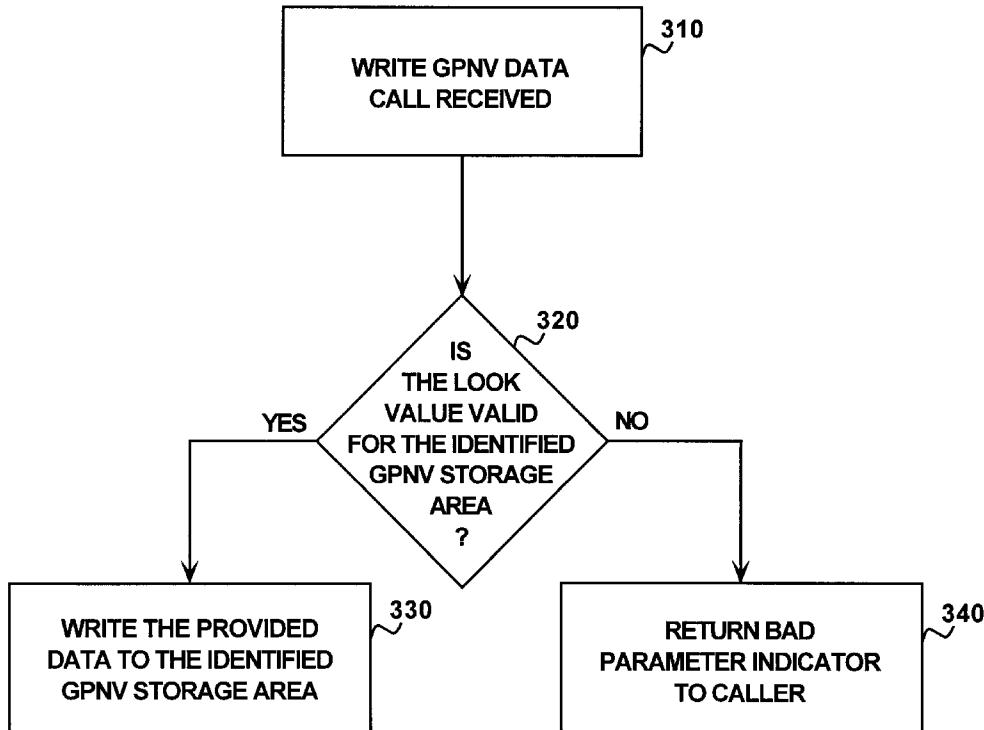
Primary Examiner—Mehmet B. Geckil

Attorney, Agent, or Firm—Blakely, Sokoloff, Taylor & Zafman LLP

[57] ABSTRACT

A method and apparatus for protecting data using lock values in a computer system includes indicating that the computer system does not support locked accesses to the data. However, upon receipt of a request to write to the storage area where the data is contained, the present invention checks whether a lock value corresponding to the request matches a predetermined lock value. If the lock value matches the predetermined lock value, then the data is written to the storage area; otherwise, the storage area is left unmodified.

23 Claims, 4 Drawing Sheets



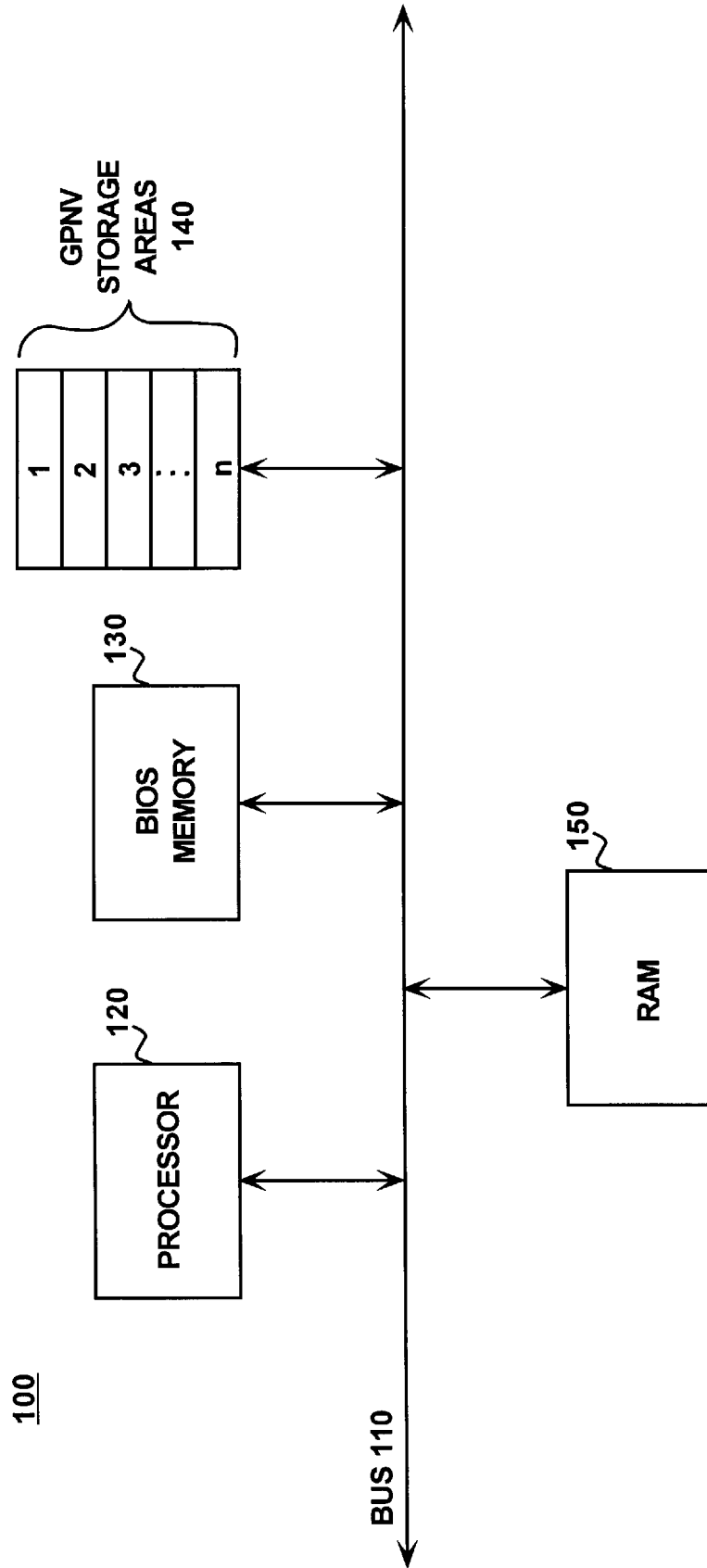


FIG. 1

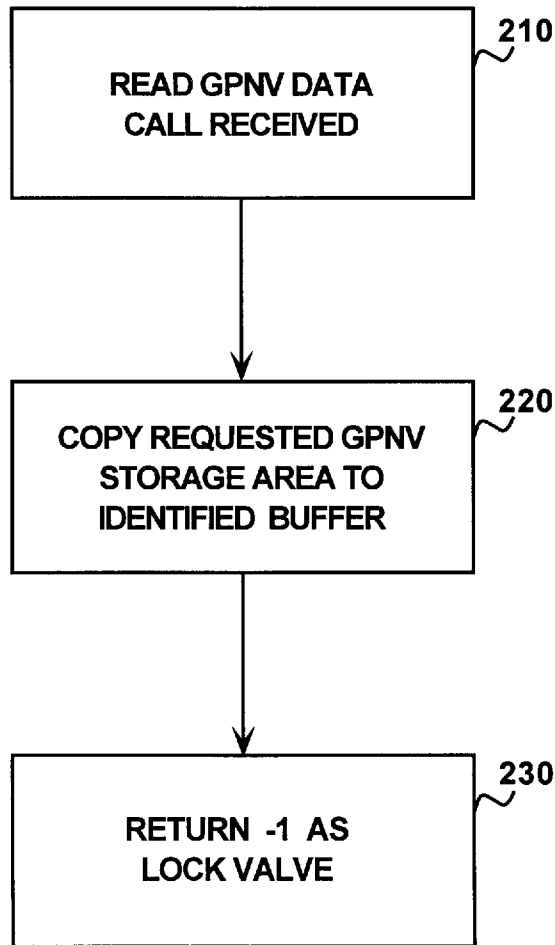


FIG. 2

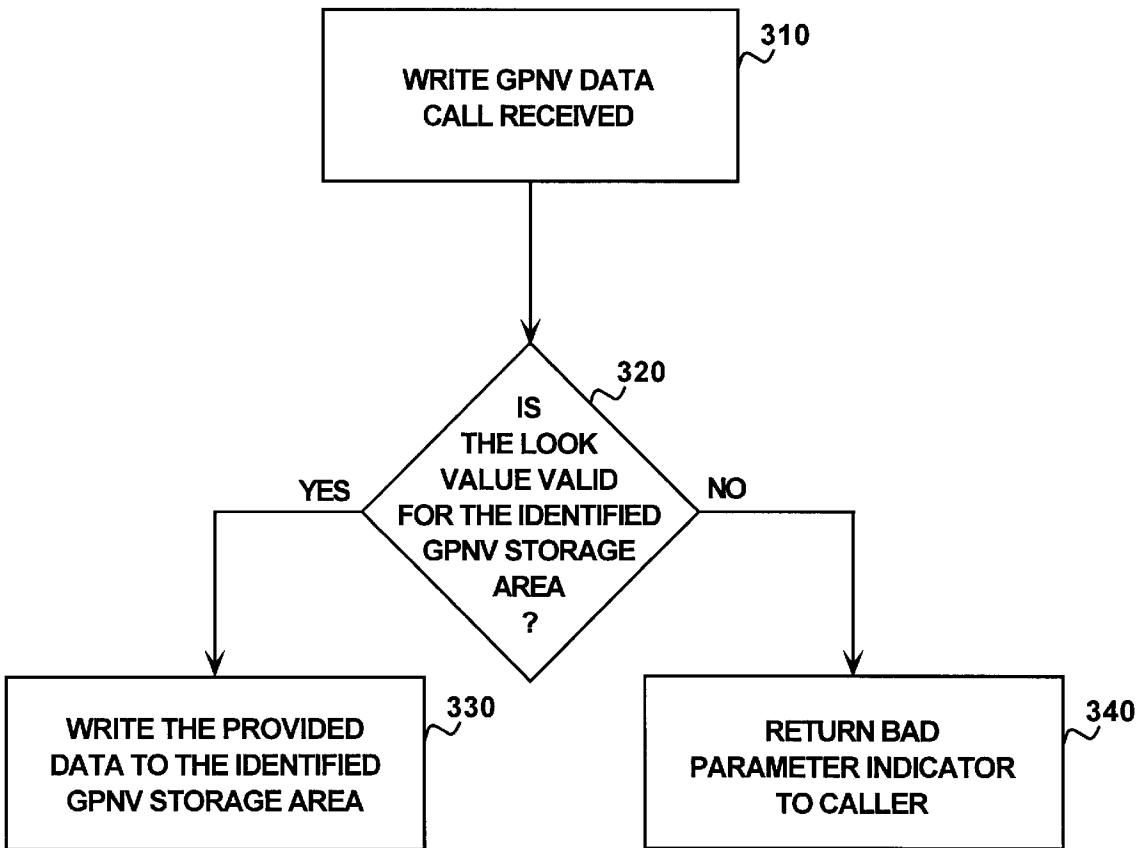


FIG. 3

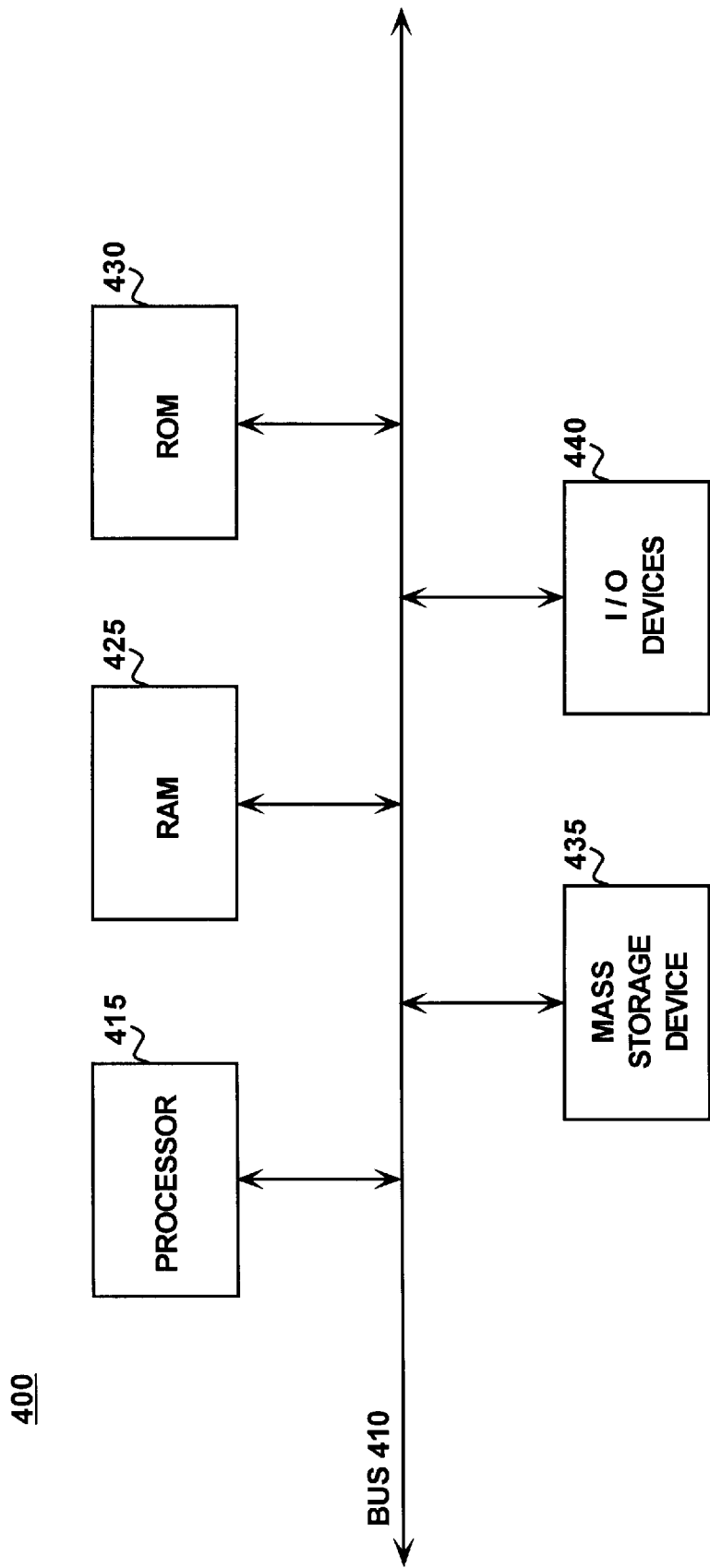


FIG. 4

Explore Litigation Insights

Docket Alarm provides insights to develop a more informed litigation strategy and the peace of mind of knowing you're on top of things.

Real-Time Litigation Alerts



Keep your litigation team up-to-date with **real-time alerts** and advanced team management tools built for the enterprise, all while greatly reducing PACER spend.

Our comprehensive service means we can handle Federal, State, and Administrative courts across the country.

Advanced Docket Research



With over 230 million records, Docket Alarm's cloud-native docket research platform finds what other services can't. Coverage includes Federal, State, plus PTAB, TTAB, ITC and NLRB decisions, all in one place.

Identify arguments that have been successful in the past with full text, pinpoint searching. Link to case law cited within any court document via Fastcase.

Analytics At Your Fingertips



Learn what happened the last time a particular judge, opposing counsel or company faced cases similar to yours.

Advanced out-of-the-box PTAB and TTAB analytics are always at your fingertips.

API

Docket Alarm offers a powerful API (application programming interface) to developers that want to integrate case filings into their apps.

LAW FIRMS

Build custom dashboards for your attorneys and clients with live data direct from the court.

Automate many repetitive legal tasks like conflict checks, document management, and marketing.

FINANCIAL INSTITUTIONS

Litigation and bankruptcy checks for companies and debtors.

E-DISCOVERY AND LEGAL VENDORS

Sync your system to PACER to automate legal marketing.