

[54] LICENSEE NOTIFICATION SYSTEM

2 245 724 1/1992 United Kingdom .

[75] Inventors: Takayuki Hasebe; Naoya Torii, both of Kawasaki, Japan

OTHER PUBLICATIONS

European Search Report issued Oct. 6, 1997.

[73] Assignee: Fujitsu Ltd., Kawasaki, Japan

Primary Examiner—Robert W. Beausoliel, Jr.
Assistant Examiner—Nadeem Iqbal
Attorney, Agent, or Firm—Staas & Halsey

[*] Notice: This patent issued on a continued prosecution application filed under 37 CFR 1.53(d), and is subject to the twenty year patent term provisions of 35 U.S.C. 154(a)(2).

[57] ABSTRACT

There is disclosed a licensee notification system for implementing a software sales system wherein license information for converting to executable form software that is presented to a user in non-executable form is communicated to the user from a management center on condition of payment of a charge, and the software is converted into executable form at the user terminal using this license information. The subject of the licensee notification system is software that decides whether or not the correspondence relationship between user identification information and signature information stored in the license file is legitimate, and, if it is legitimate, displays the user identification information to the user before starting proper operation; or, if it is not legitimate, does not start proper operation. The licensee notification system is constituted by connecting the management center and user terminals by communication circuits. If license information is requested from the user terminal, the management center transmits license information combining in integral form the user identification information identifying the user and conversion information for converting the software to executable form. The user terminal enables the software using the conversion information contained in this license information and writes user identification information and signature information whose content is determined in accordance with the content of the user identification information to a license file that is referred to when this software is operating.

[21] Appl. No.: 08/673,108

[22] Filed: Jul. 1, 1996

[30] Foreign Application Priority Data

Aug. 31, 1995 [JP] Japan 7-224338

[51] Int. Cl.⁶ G06F 11/00; H04L 9/00

[52] U.S. Cl. 713/200; 382/23

[58] Field of Search 380/3, 4, 23, 25, 380/26; 395/186, 187.01, 188.01, 182.16, 182.18, 183.12

[56] References Cited

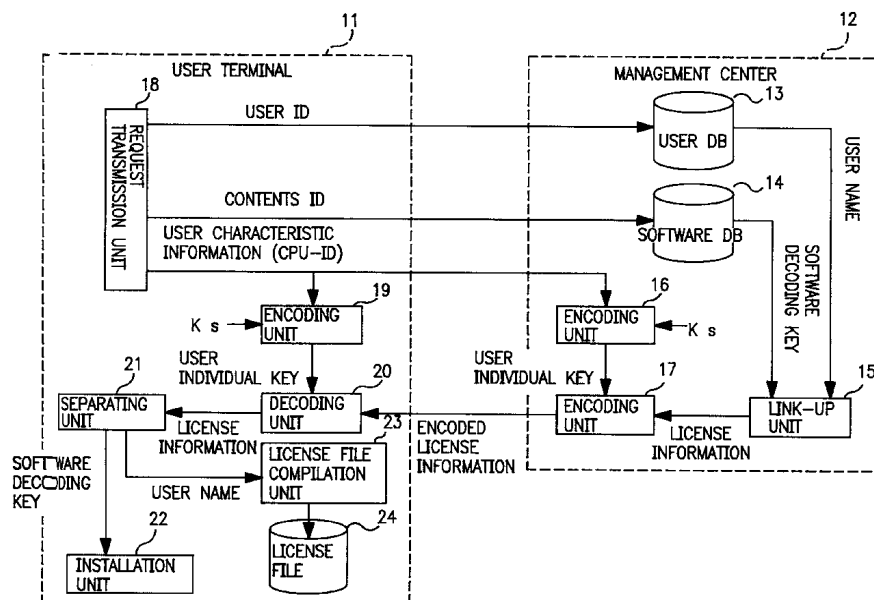
U.S. PATENT DOCUMENTS

4,866,769	9/1989	Karp	380/4
5,103,476	4/1992	Waite et al. .	
5,204,897	4/1993	Wyman	380/4
5,287,408	2/1994	Samson	380/4
5,291,598	3/1994	Grundy .	
5,319,705	6/1994	Halter et al. .	
5,479,612	12/1995	Kenton et al.	385/186
5,757,907	5/1998	Cooper et al.	380/4

FOREIGN PATENT DOCUMENTS

0 367 700 A2	5/1990	European Pat. Off. .
0 613 073 A1	8/1994	European Pat. Off. .

14 Claims, 6 Drawing Sheets



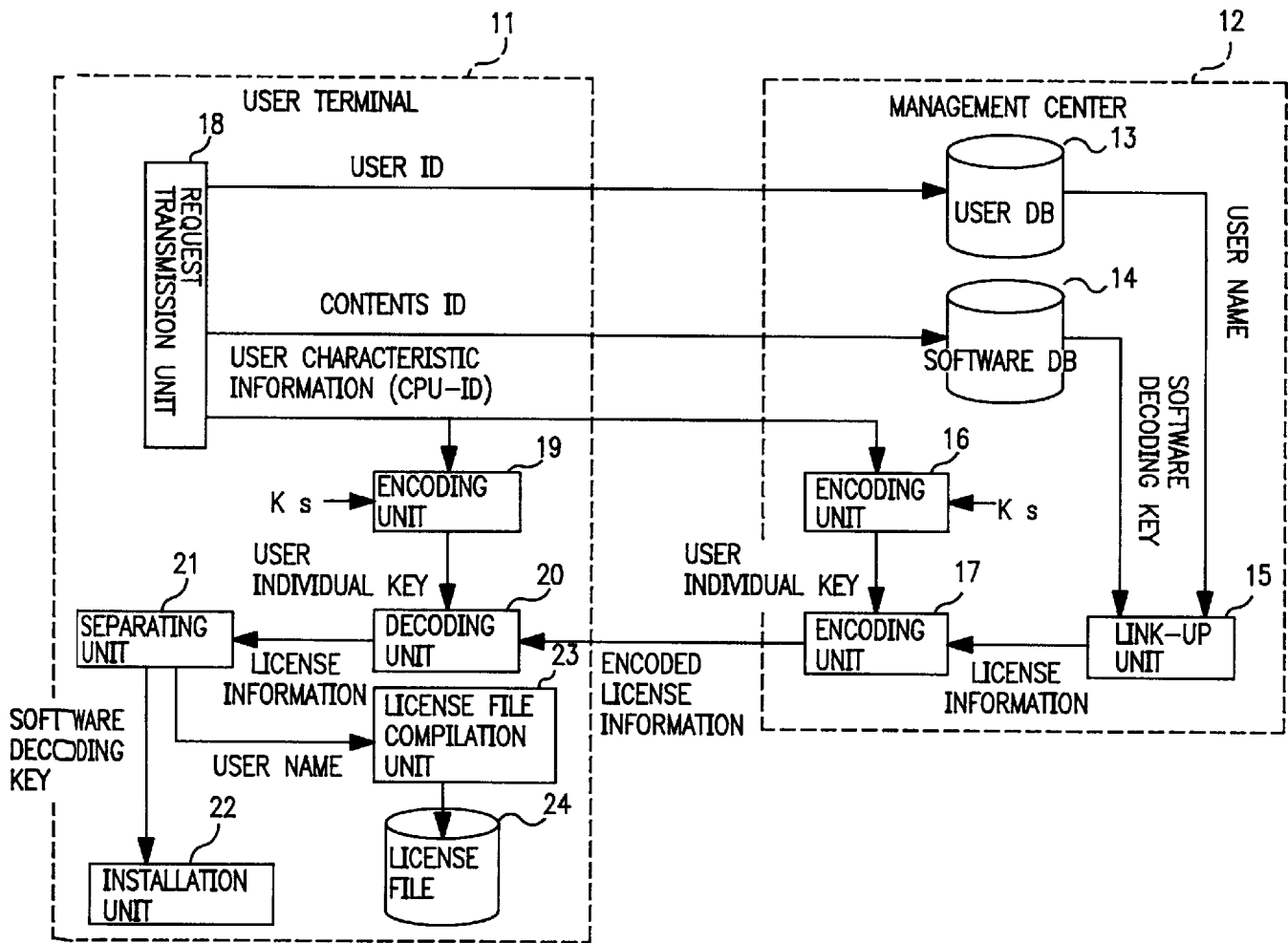


FIG. 1

FIG. 2

13

USER ID	USER NAME
M0001111	TOKKYO TARO

FIG. 3

14

CONTENTS ID	DECODING KEY
ABC00001	XXXXXXXXXX

FIG. 4

24

CONTENTS ID	USER NAME	SIGNATURE INFORMATION
ABC00001	TOKKYO TARO	ZZZZZZZZ

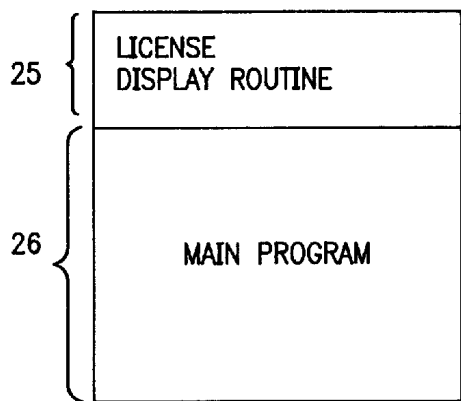


FIG. 5

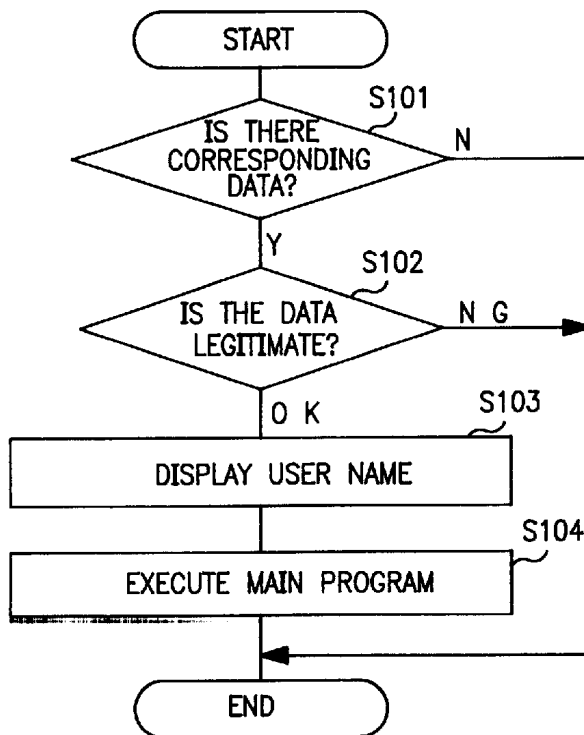


FIG. 6

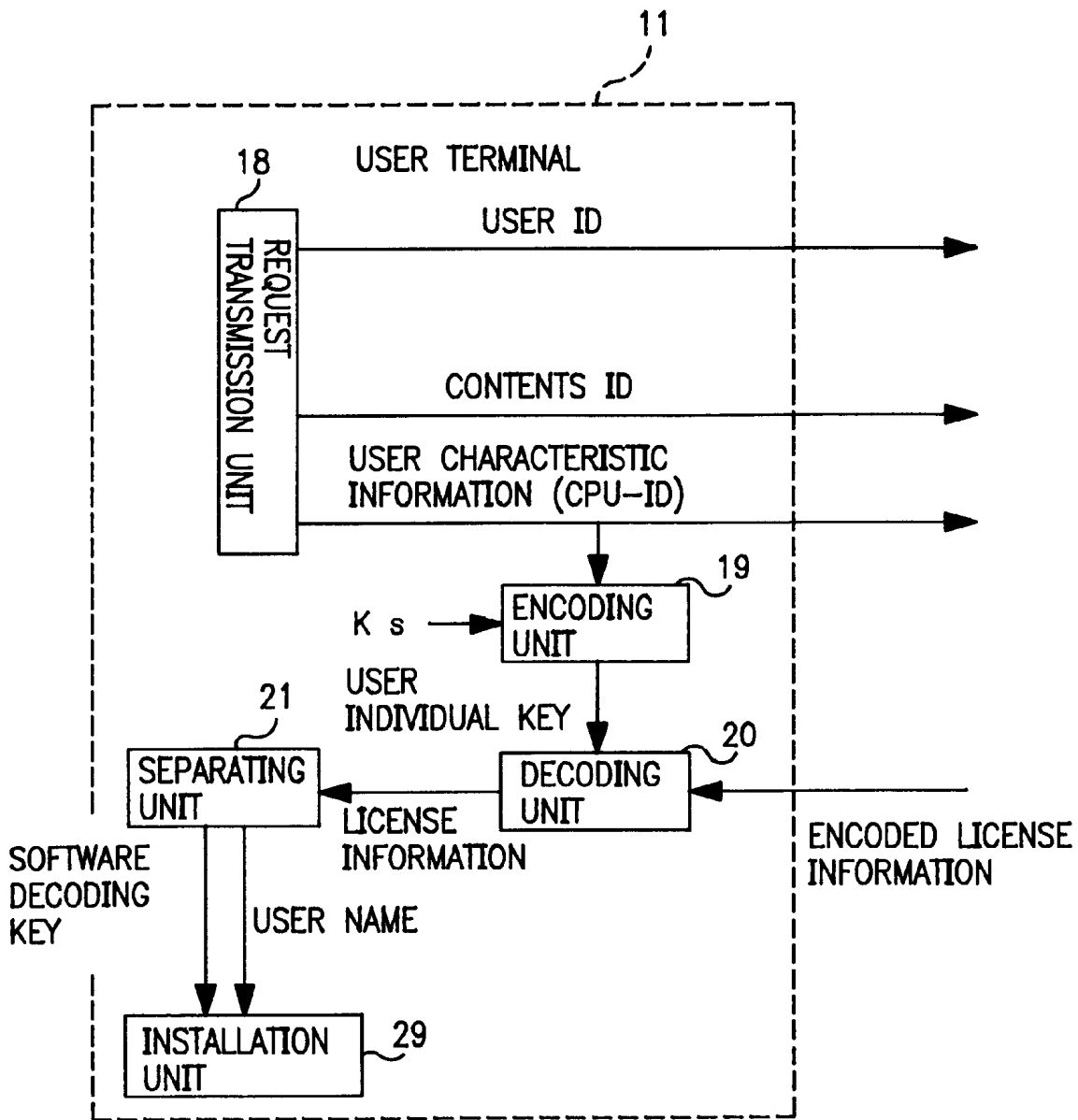


FIG. 7

Explore Litigation Insights

Docket Alarm provides insights to develop a more informed litigation strategy and the peace of mind of knowing you're on top of things.

Real-Time Litigation Alerts



Keep your litigation team up-to-date with **real-time alerts** and advanced team management tools built for the enterprise, all while greatly reducing PACER spend.

Our comprehensive service means we can handle Federal, State, and Administrative courts across the country.

Advanced Docket Research



With over 230 million records, Docket Alarm's cloud-native docket research platform finds what other services can't. Coverage includes Federal, State, plus PTAB, TTAB, ITC and NLRB decisions, all in one place.

Identify arguments that have been successful in the past with full text, pinpoint searching. Link to case law cited within any court document via Fastcase.

Analytics At Your Fingertips



Learn what happened the last time a particular judge, opposing counsel or company faced cases similar to yours.

Advanced out-of-the-box PTAB and TTAB analytics are always at your fingertips.

API

Docket Alarm offers a powerful API (application programming interface) to developers that want to integrate case filings into their apps.

LAW FIRMS

Build custom dashboards for your attorneys and clients with live data direct from the court.

Automate many repetitive legal tasks like conflict checks, document management, and marketing.

FINANCIAL INSTITUTIONS

Litigation and bankruptcy checks for companies and debtors.

E-DISCOVERY AND LEGAL VENDORS

Sync your system to PACER to automate legal marketing.