



US006931763B2

(12) **United States Patent**
Bray, Jr. et al.

(10) **Patent No.:** US 6,931,763 B2
(45) **Date of Patent:** Aug. 23, 2005

(54) **SLIPPER INSOLE, SLIPPER, AND METHOD FOR MANUFACTURING A SLIPPER**

(75) Inventors: **Walter Thomas Bray, Jr.**, Reynoldsburg, OH (US); **Theresa Stewart**, Columbus, OH (US)

(73) Assignee: **R.G. Barry Corporation**, Pickerington, OH (US)

(*) Notice: Subject to any disclaimer, the term of this patent is extended or adjusted under 35 U.S.C. 154(b) by 0 days.

(21) Appl. No.: **10/634,508**

(22) Filed: **Aug. 5, 2003**

(65) **Prior Publication Data**

US 2004/0134095 A1 Jul. 15, 2004

Related U.S. Application Data

(63) Continuation-in-part of application No. 10/213,276, filed on Aug. 5, 2002.

(51) **Int. Cl.**⁷ **A43B 1/02**

(52) **U.S. Cl.** **36/9 R; 36/44; 36/11; 12/142 T**

(58) **Field of Search** **36/9 R, 43, 44, 36/71, 11, 12; 12/142 T, 142 G**

(56) **References Cited**

U.S. PATENT DOCUMENTS

D62,779 S 7/1923 Hirshfield D2/921
D64,599 S 5/1924 Muntener D2/922

RE18,237 E 10/1931 Messler
D119,742 S 4/1940 Debusschere D2/919
D120,316 S 4/1940 Reeves D2/959
D135,347 S 3/1943 Pierson D2/960
D136,381 S 9/1943 Ghez et al. D2/960
D170,768 S 11/1953 Preti D2/922
D174,475 S 4/1955 Smith D2/923
2,715,285 A 8/1955 Del Vecchio
3,468,040 A 9/1969 Fukuoka

(Continued)

OTHER PUBLICATIONS

Declaration of Walter Thomas Bray, Jr. including Exhibits A-I (Color Photographs).

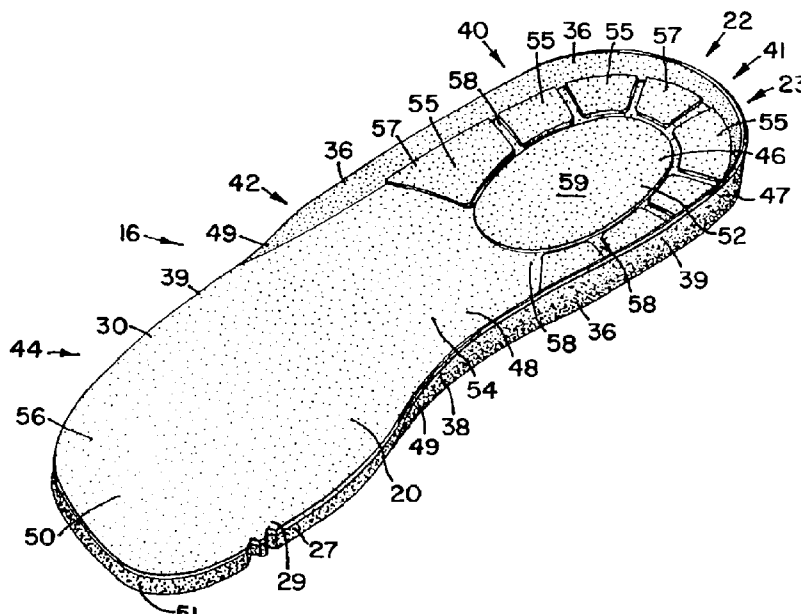
Primary Examiner—Jila M. Mohandesi

(74) *Attorney, Agent, or Firm*—Merchant & Gould P.C.

(57) **ABSTRACT**

An insole is described that can be placed with an insole receiving area of a slipper. The insole can be prepared by molding a structure comprising a foam layer having a first foam side and a second foam side. The insole includes a heel region, an arch region, and a toe region. The heel region includes a heel cushioning portion and a heel perimeter portion. The heel perimeter portion includes a retaining wall that extends above the top surface of the heel cushioning portion. The arch region includes an arch cushioning portion and an arch perimeter portion. The arch perimeter portion includes an arch support that extends above the top surface of the arch cushioning portion. The toe region includes a toe cushioning portion and a toe perimeter portion. A slipper and a method for manufacturing a slipper are described.

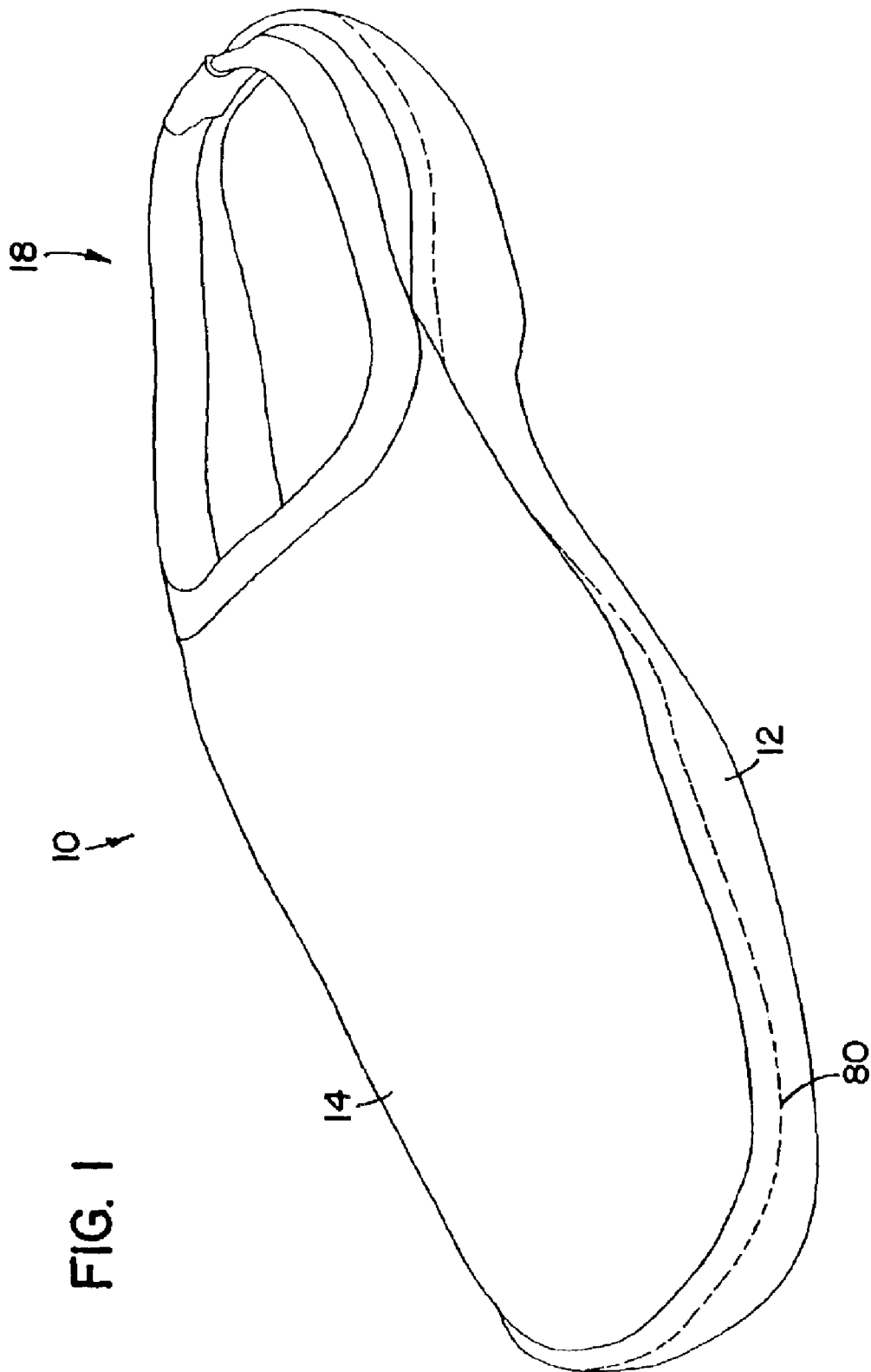
30 Claims, 15 Drawing Sheets



U.S. PATENT DOCUMENTS

3,766,669 A	10/1973	Pearsall	D366,956 S	2/1996	Gay	
4,020,569 A	5/1977	Fukuoka	5,542,196 A *	8/1996	Kantro	36/44
4,020,570 A	5/1977	Shames	5,544,432 A	8/1996	Kita	
4,033,054 A	7/1977	Fukuoka	5,551,173 A	9/1996	Chambers	
4,124,946 A	11/1978	Tomlin	5,611,153 A	3/1997	Fisher et al.	
4,129,697 A	12/1978	Schapel et al.	5,664,342 A	9/1997	Buchsenschuss	
D276,003 S	10/1984	McAbery	5,669,162 A	9/1997	Dyer	
4,508,774 A	4/1985	Grabhoefer et al.	5,675,914 A	10/1997	Cintron	
4,513,518 A	4/1985	Jalbert et al.	5,718,064 A	2/1998	Pyle	
D284,901 S	8/1986	Tilles	5,787,608 A	8/1998	Greenawalt	
4,627,177 A	12/1986	Meyers	D399,042 S	10/1998	Strawser et al.	
4,633,877 A	1/1987	Pendergast	D418,281 S	1/2000	Bray et al.	D2/919
4,674,204 A	6/1987	Sullivan et al.	D423,766 S	5/2000	Genga	
D294,537 S	3/1988	Le	D426,373 S	6/2000	Allen et al.	
4,741,951 A	5/1988	Ricciardi et al.	D432,769 S	10/2000	Yung et al.	
4,760,655 A	8/1988	Mauch	6,176,025 B1 *	1/2001	Patterson et al.	36/28
4,864,740 A	9/1989	Oakley	6,219,941 B1	4/2001	Kukoff	
5,146,698 A	9/1992	Tilles et al.	6,226,894 B1	5/2001	Bray, Jr. et al.	
5,167,999 A	12/1992	Wang	6,286,232 B1	9/2001	Snyder et al.	
5,203,793 A	4/1993	Lyden	6,338,768 B1 *	1/2002	Chi	156/269
D354,389 S	1/1995	Howlett et al.	6,418,642 B1	7/2002	Bigg et al.	
D354,844 S	1/1995	Rinehart	6,662,469 B2 *	12/2003	Belley et al.	36/16
5,392,532 A	2/1995	Bray, Jr. et al.	D485,664 S	1/2004	Bray, Jr. et al.	
5,435,077 A	7/1995	Pyle	D485,665 S	1/2004	Bray, Jr. et al.	
D366,140 S	1/1996	Finn	D485,666 S	1/2004	Bray, Jr. et al.	
5,483,757 A	1/1996	Frykberg	D490,970 S	6/2004	Bray, Jr. et al.	

* cited by examiner



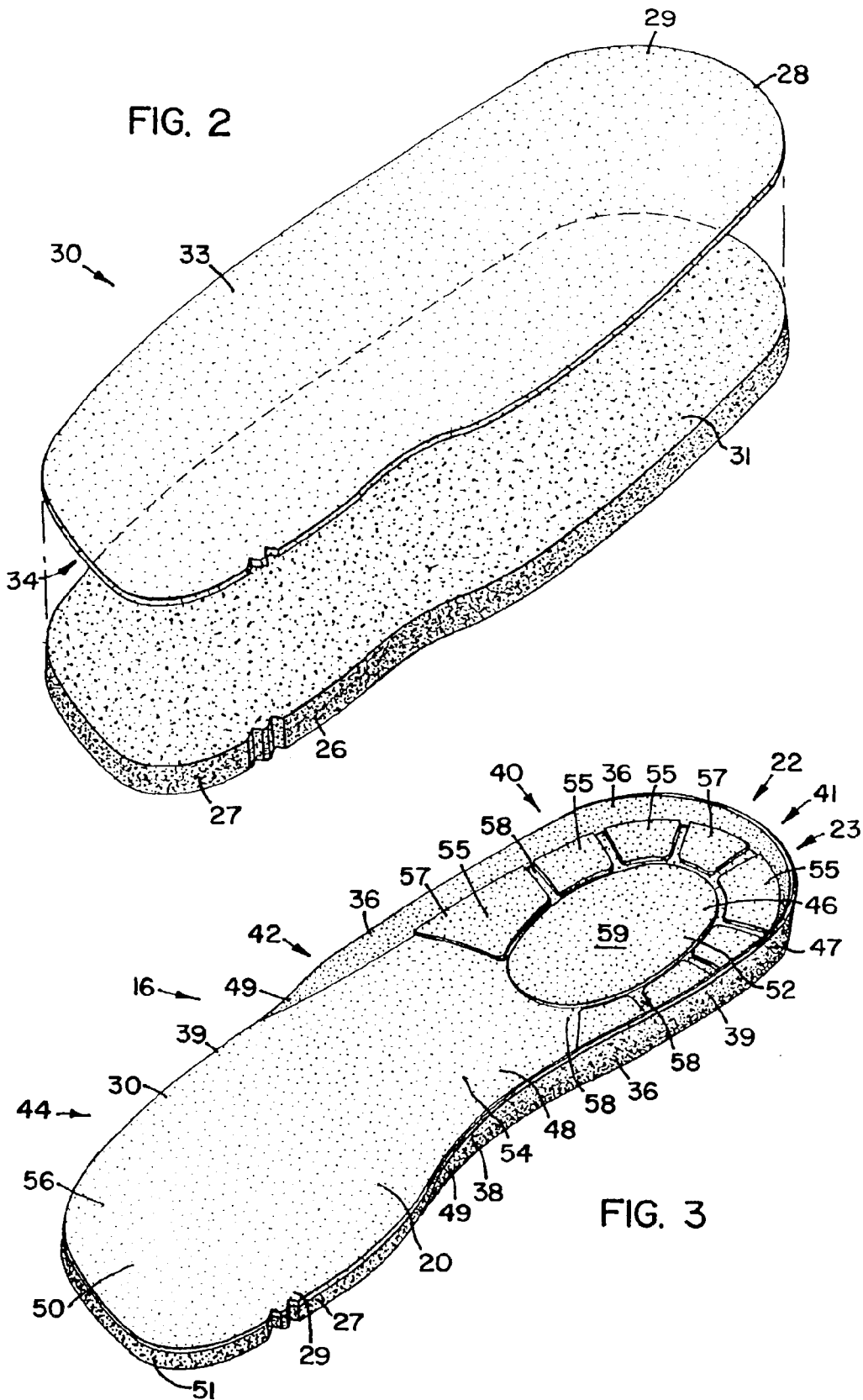
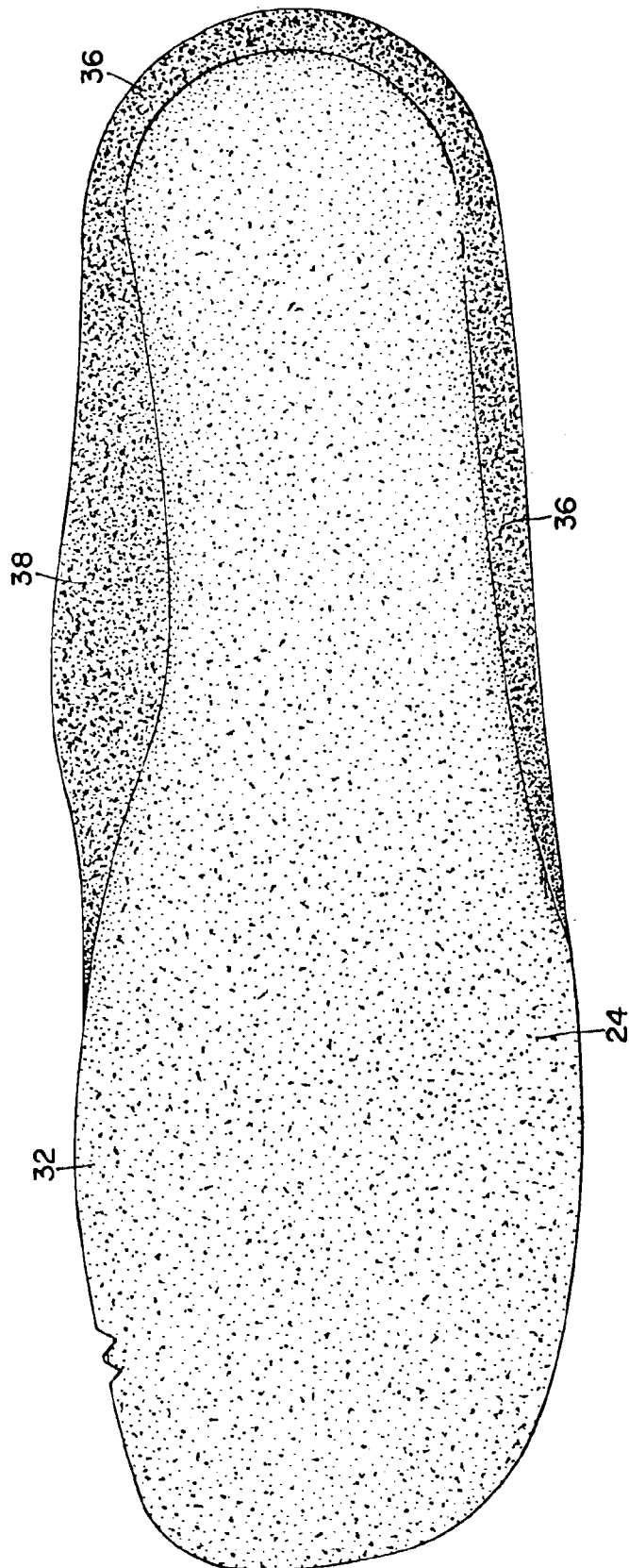


FIG. 4



Explore Litigation Insights

Docket Alarm provides insights to develop a more informed litigation strategy and the peace of mind of knowing you're on top of things.

Real-Time Litigation Alerts



Keep your litigation team up-to-date with **real-time alerts** and advanced team management tools built for the enterprise, all while greatly reducing PACER spend.

Our comprehensive service means we can handle Federal, State, and Administrative courts across the country.

Advanced Docket Research



With over 230 million records, Docket Alarm's cloud-native docket research platform finds what other services can't. Coverage includes Federal, State, plus PTAB, TTAB, ITC and NLRB decisions, all in one place.

Identify arguments that have been successful in the past with full text, pinpoint searching. Link to case law cited within any court document via Fastcase.

Analytics At Your Fingertips



Learn what happened the last time a particular judge, opposing counsel or company faced cases similar to yours.

Advanced out-of-the-box PTAB and TTAB analytics are always at your fingertips.

API

Docket Alarm offers a powerful API (application programming interface) to developers that want to integrate case filings into their apps.

LAW FIRMS

Build custom dashboards for your attorneys and clients with live data direct from the court.

Automate many repetitive legal tasks like conflict checks, document management, and marketing.

FINANCIAL INSTITUTIONS

Litigation and bankruptcy checks for companies and debtors.

E-DISCOVERY AND LEGAL VENDORS

Sync your system to PACER to automate legal marketing.