

- [54] **METHOD AND APPARATUS FOR MEASURING DIRECTION**
- [75] Inventor: **Homer L. Eaton, Balboa, Calif.**
- [73] Assignee: **Eaton-Leonard Corporation, Santa Ana, Calif.**
- [22] Filed: **Apr. 18, 1974**
- [21] Appl. No.: **461,881**
- [52] U.S. Cl. **235/151.3; 235/61.6 R; 33/174 PC; 33/1 M; 33/1 N**
- [51] Int. Cl.² **G01B 3/56; G01B 7/28**
- [58] Field of Search **33/1 M, 1 N, 1 PT, 1 CC, 33/1 MP, 174 PC; 235/151.3, 61.6 A, 61.6 B, 61.6 R, 151.11, 92 DN, 151.32; 250/237**

Primary Examiner—Edward J. Wise

[57] **ABSTRACT**

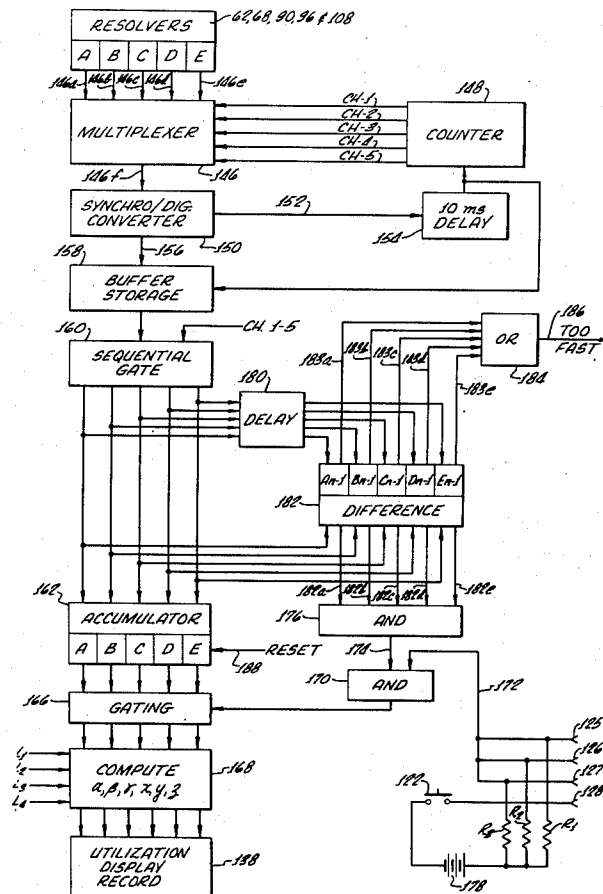
Measurement of a vector inn space is accomplished by an articulated five axis probe carrying a working head that can be moved into a measuring position that has a known angular relation to an object to be measured. A plurality of pivotally interconnected links include a first link pivotally mounted to a work table and an end link that fixedly carries a working head having a V-groove defined by four mutually spaced electrically conductive contact elements. For measurements made upon a tube having a number of bends, the working head is successively positioned in contact with the several straight portions of the bent tube and the angles of the several links relative to adjacent links and relative to the work table are read out for each contact. When the working head is properly oriented with respect to the tube, the electrical contacts enable read out of the several angles. These collectively define both the direction of the working head and its coordinate position with respect to a reference coordinate system. The measured angles, together with lengths of the several links, are employed to calculate direction angles and coordinate position of vectors coaxial with each tube straight portion.

[56] **References Cited**

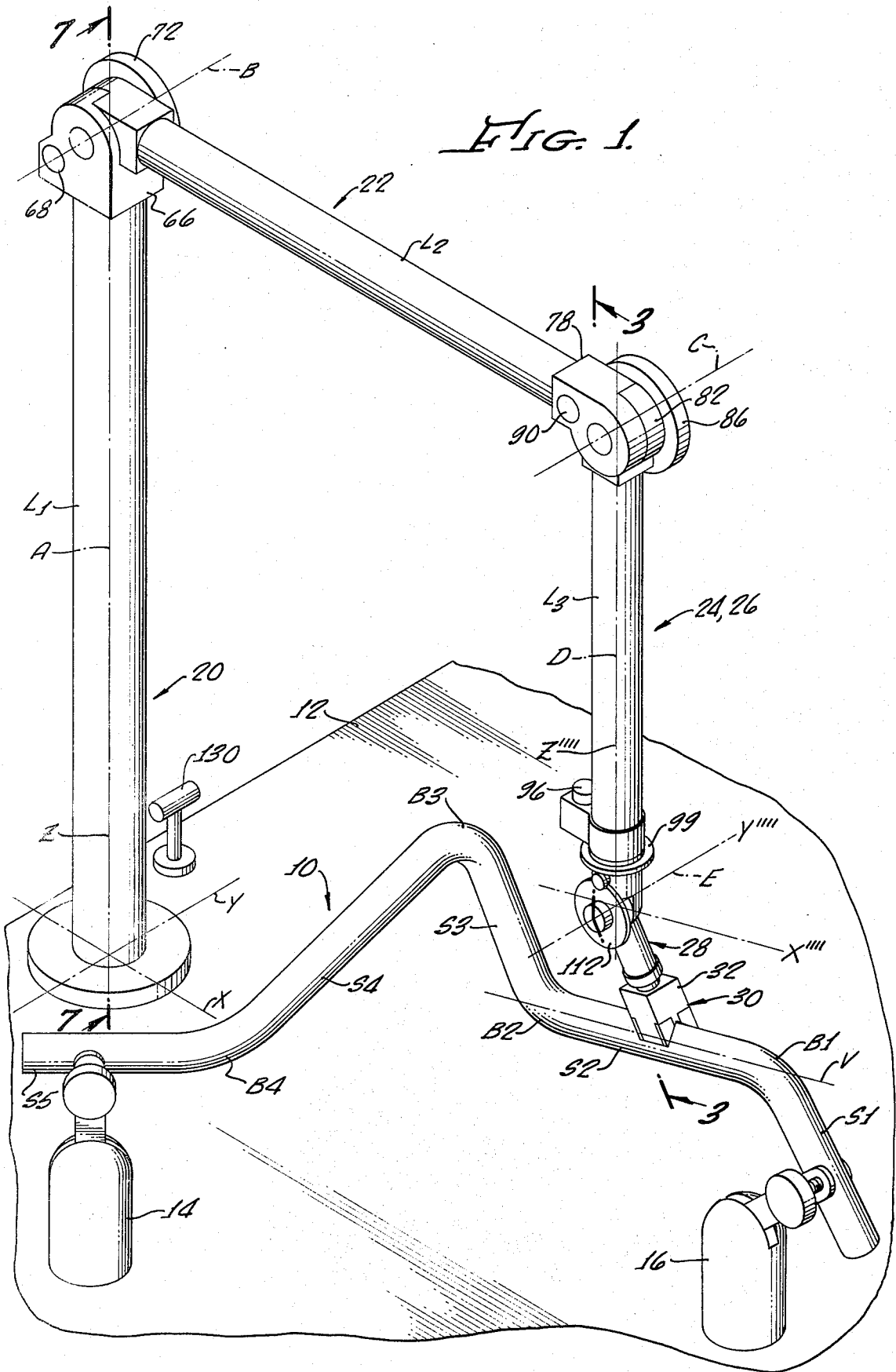
UNITED STATES PATENTS

| | | | |
|-----------|---------|------------------------|--------------|
| 3,226,833 | 1/1966 | Lemelson..... | 33/143 |
| 3,246,128 | 4/1966 | Albrecht et al..... | 235/61.6 A X |
| 3,267,251 | 8/1966 | Anderson..... | 235/61.6 A X |
| 3,346,724 | 10/1967 | Fuhremister et al..... | 235/61.6 |
| 3,410,956 | 11/1968 | Grossimon et al..... | 235/61.6 A X |
| 3,515,888 | 2/1970 | Lewis..... | 235/151.34 X |
| 3,531,868 | 10/1970 | Stevenson..... | 33/174 |
| 3,567,950 | 3/1971 | Meyer..... | 33/1 X |
| 3,571,934 | 3/1971 | Buck..... | 33/174 |
| 3,601,590 | 8/1971 | Norton..... | 235/151.11 X |
| 3,609,322 | 9/1971 | Burnett et al..... | 235/151.11 |

47 Claims, 17 Drawing Figures



EX1074



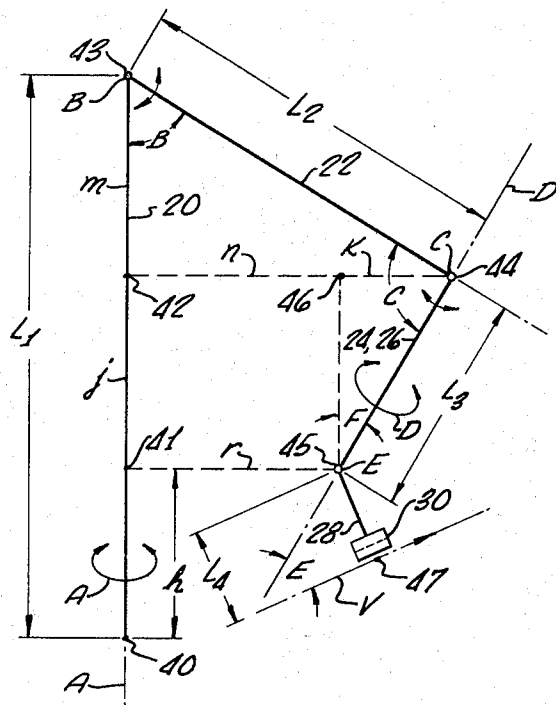


FIG. 2.

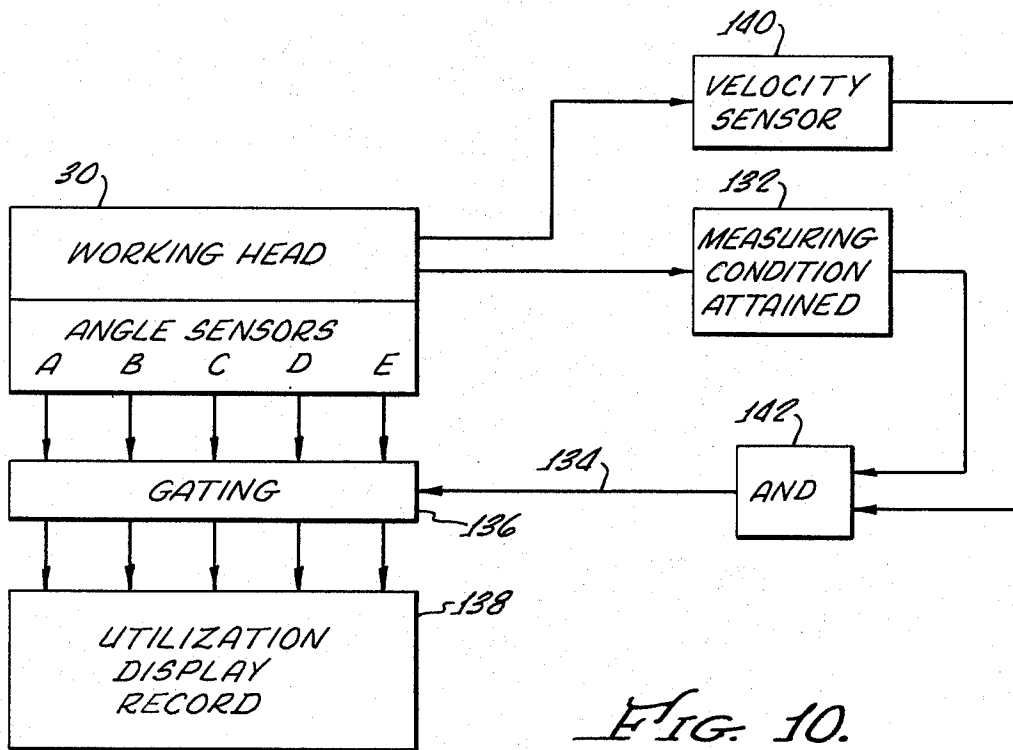


FIG. 10.

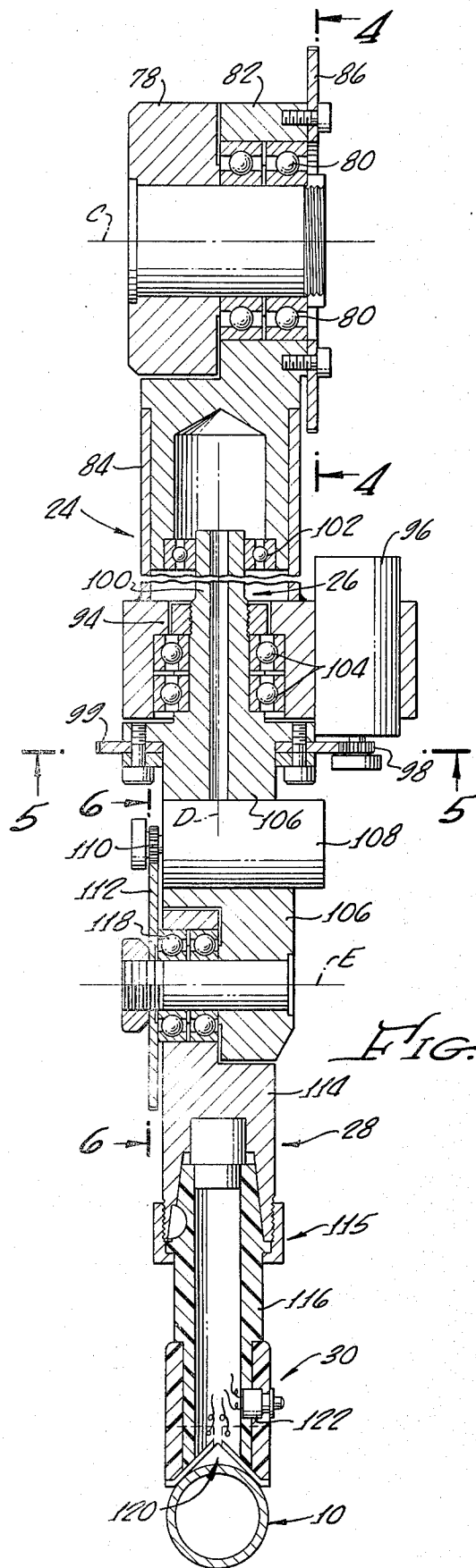


FIG. 3.

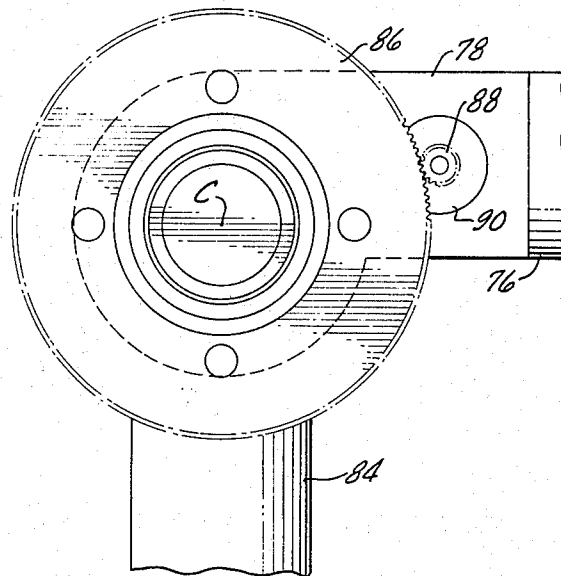


FIG. 4.

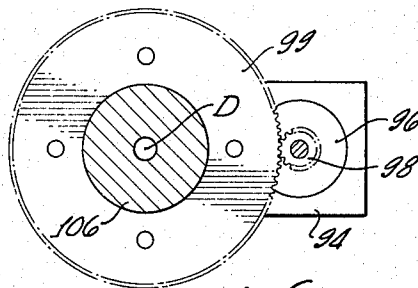


FIG. 5.

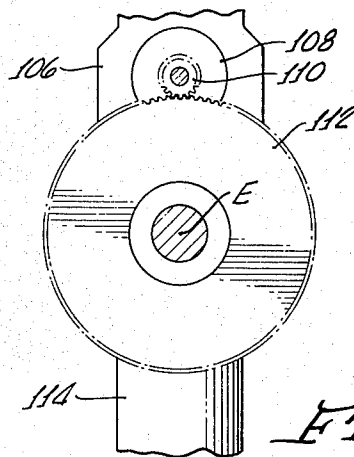
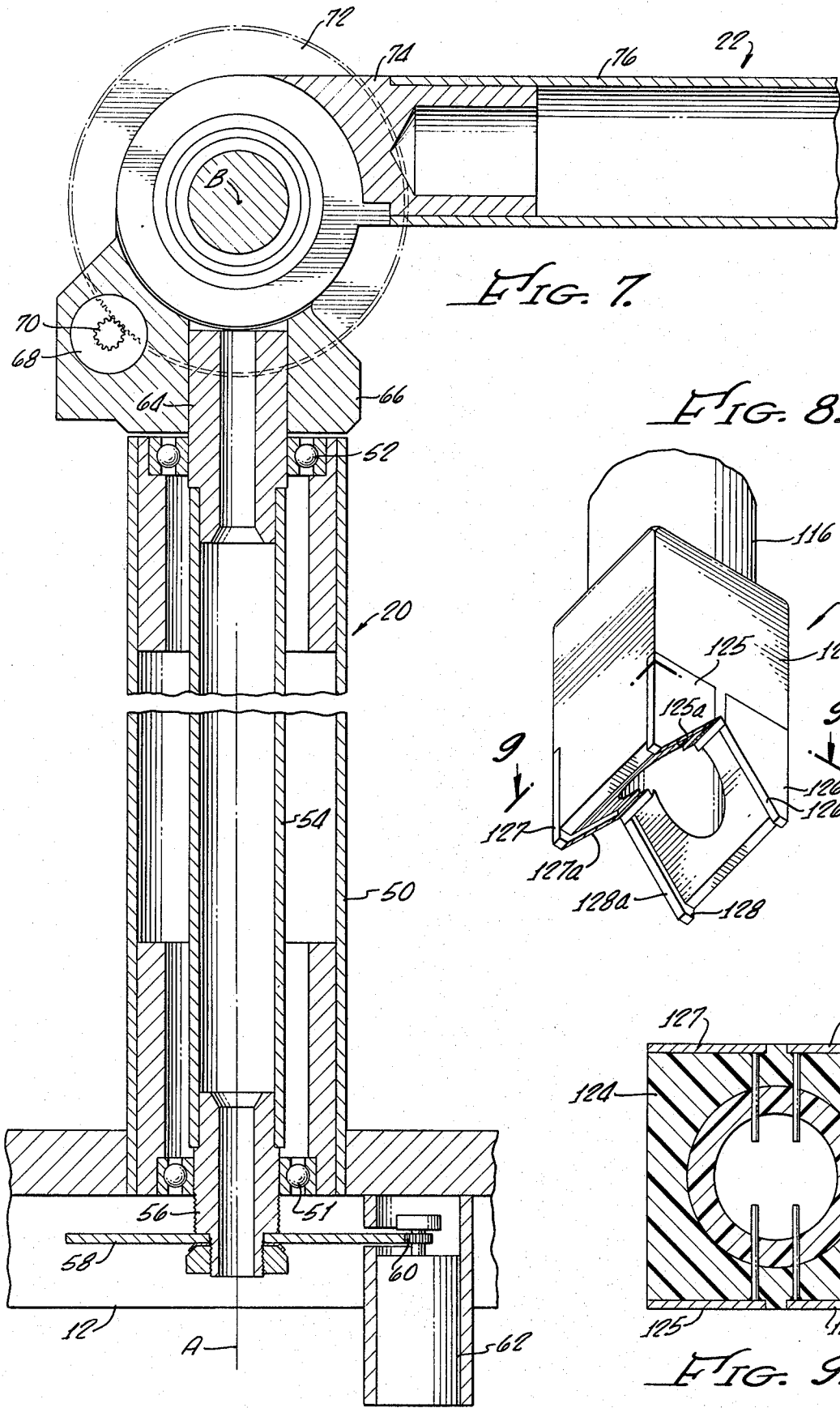


FIG. 6.



Explore Litigation Insights

Docket Alarm provides insights to develop a more informed litigation strategy and the peace of mind of knowing you're on top of things.

Real-Time Litigation Alerts



Keep your litigation team up-to-date with **real-time alerts** and advanced team management tools built for the enterprise, all while greatly reducing PACER spend.

Our comprehensive service means we can handle Federal, State, and Administrative courts across the country.

Advanced Docket Research



With over 230 million records, Docket Alarm's cloud-native docket research platform finds what other services can't. Coverage includes Federal, State, plus PTAB, TTAB, ITC and NLRB decisions, all in one place.

Identify arguments that have been successful in the past with full text, pinpoint searching. Link to case law cited within any court document via Fastcase.

Analytics At Your Fingertips



Learn what happened the last time a particular judge, opposing counsel or company faced cases similar to yours.

Advanced out-of-the-box PTAB and TTAB analytics are always at your fingertips.

API

Docket Alarm offers a powerful API (application programming interface) to developers that want to integrate case filings into their apps.

LAW FIRMS

Build custom dashboards for your attorneys and clients with live data direct from the court.

Automate many repetitive legal tasks like conflict checks, document management, and marketing.

FINANCIAL INSTITUTIONS

Litigation and bankruptcy checks for companies and debtors.

E-DISCOVERY AND LEGAL VENDORS

Sync your system to PACER to automate legal marketing.