

[54] **CURRENT-CONTROLLED LUMINOUS ELEMENT ARRAY AND METHOD FOR PRODUCING THE SAME**

2-196475 8/1990 Japan ..... 257/40  
 4-297076 10/1992 Japan ..... 257/40  
 0553950A2 8/1993 Japan .

[75] Inventors: **Koji Utsugi; Naoyasu Ikeda**, both of Tokyo, Japan

[73] Assignee: **NEC Corporation**, Tokyo, Japan

[21] Appl. No.: **321,608**

[22] Filed: **Oct. 12, 1994**

[30] **Foreign Application Priority Data**

Oct. 12, 1993 [JP] Japan ..... 5-253866

[51] **Int. Cl.<sup>6</sup>** ..... **G09G 3/30**

[52] **U.S. Cl.** ..... **257/59; 257/40; 313/504; 313/505; 340/825.81; 345/76; 345/80; 345/206**

[58] **Field of Search** ..... **257/40, 59, 72; 313/504, 505; 345/206, 76, 91, 58, 80; 340/825.81**

[56] **References Cited**

**U.S. PATENT DOCUMENTS**

2,965,802	12/1960	Loebner	345/81
3,621,321	11/1971	Williams	313/504
4,114,070	9/1978	Asars	315/169.2
5,105,233	4/1992	Egusa	257/40
5,220,316	6/1993	Kazan	340/784
5,294,811	3/1994	Aoyama et al.	257/59
5,343,050	8/1994	Egusa et al.	257/40
5,408,109	4/1995	Heeger et al.	257/40
5,514,878	5/1996	Holmes et al.	257/40

**FOREIGN PATENT DOCUMENTS**

2488016 7/1980 France .

**OTHER PUBLICATIONS**

Howard, W.E., "Active-Matrix Techniques for Displays," Proceedings for the Society for Information Display (SID) vol. 27, No. 4, 1986, pp. 313-326  
 Japan Display '89, pp. 704-707, entitled "Matrix-Addressed Organic Thin film EL Display Panel".  
 EuroDisplay '90, pp. 216-219, entitled "Design of a Prototype Active Matrix CdSe TFT Addressed EL Display".  
 European Search Report.

*Primary Examiner*—Jerome Jackson  
*Assistant Examiner*—John Guay  
*Attorney, Agent, or Firm*—Whitham, Curtis, Whitham & McGinn

[57] **ABSTRACT**

In a current-controlled luminous element array, combinations of a luminous element of a current-controlled type, a current-controlling transistor for controlling the current of the luminous element, and a switching transistor are arranged in a matrix form between signal electrode lines and scan electrode lines such that the luminous element is connected at one terminal thereof to a power source electrode line and at the other terminal thereof to a drain electrode of the current-controlling transistor, a gate electrode of the current-controlling transistor and one signal electrode line have the switching transistor connected therebetween, and the current-controlling transistor in an arbitrary column of matrix has a source electrode thereof connected to one scan electrode line in another column.

**14 Claims, 6 Drawing Sheets**

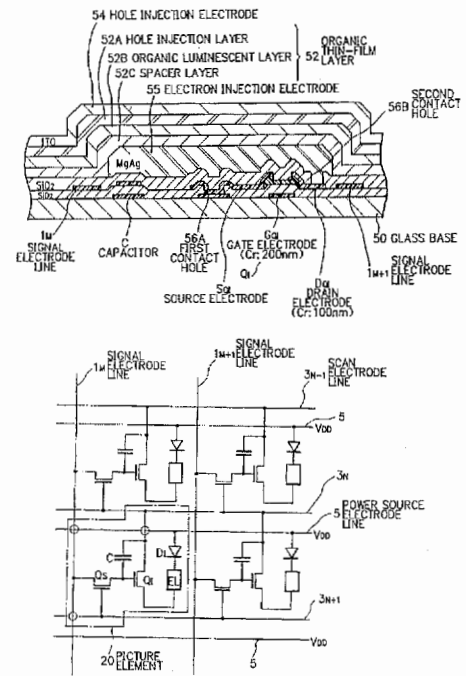


FIG. 1  
PRIOR ART

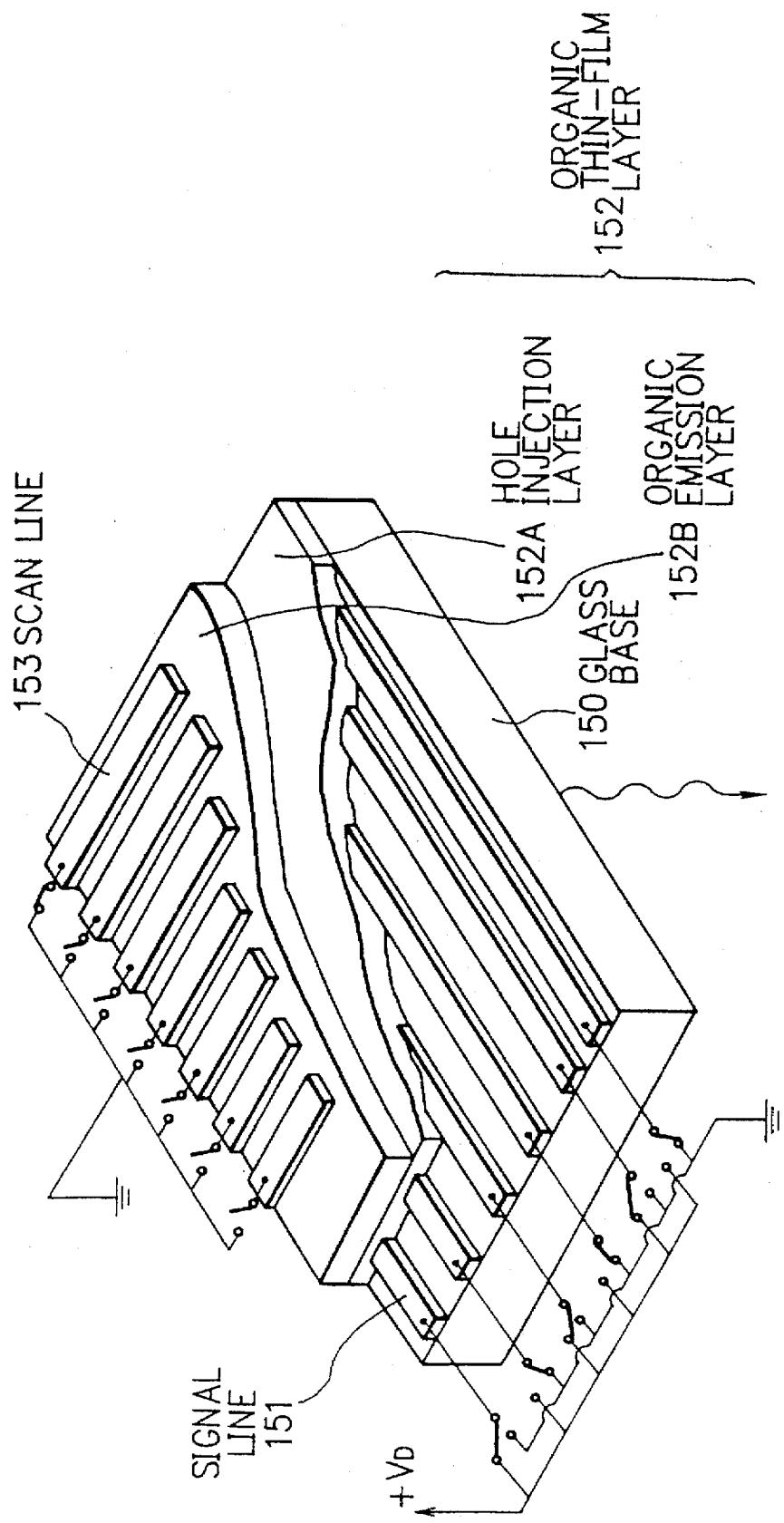


FIG. 2  
PRIOR ART

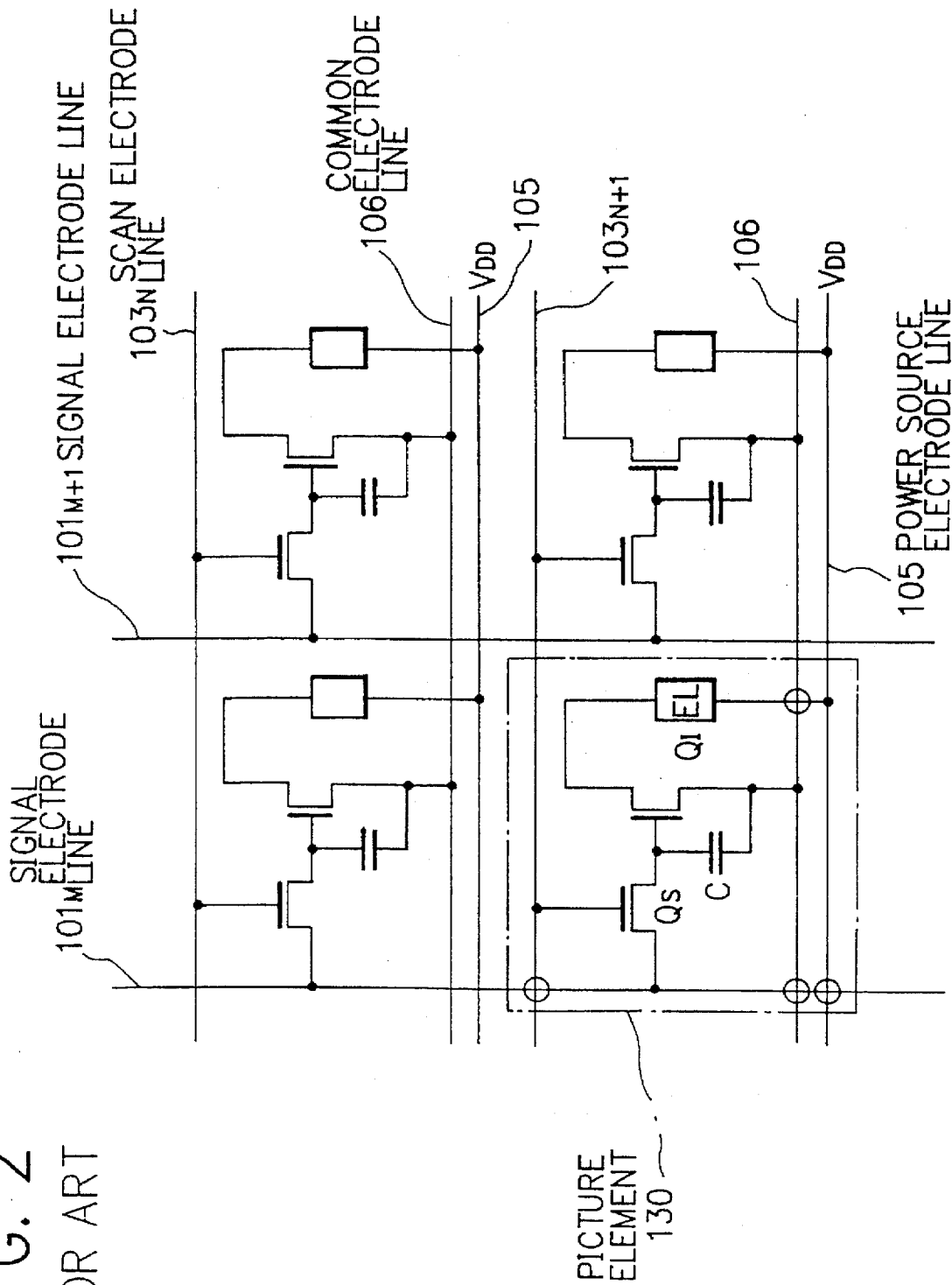


FIG. 3

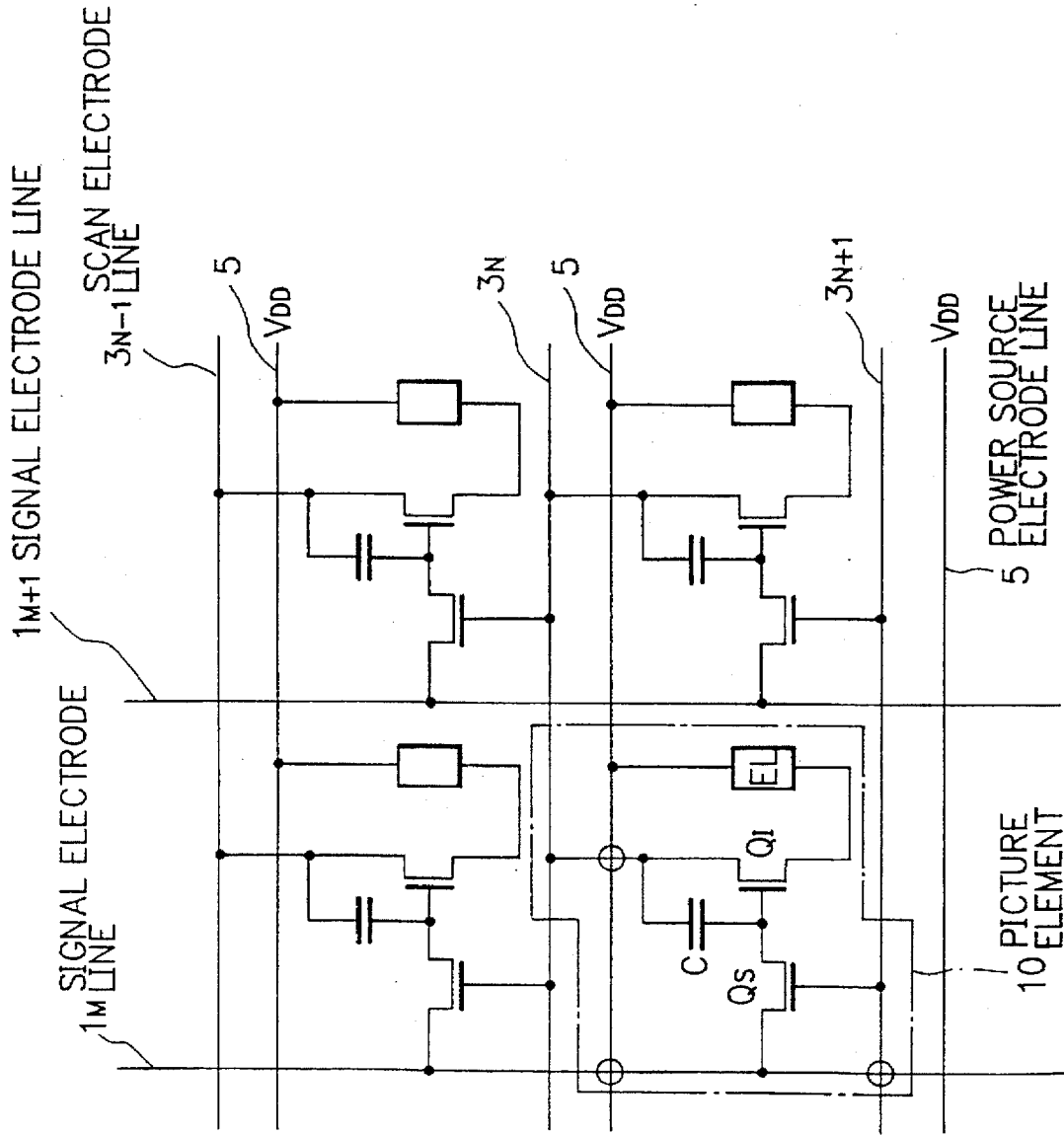
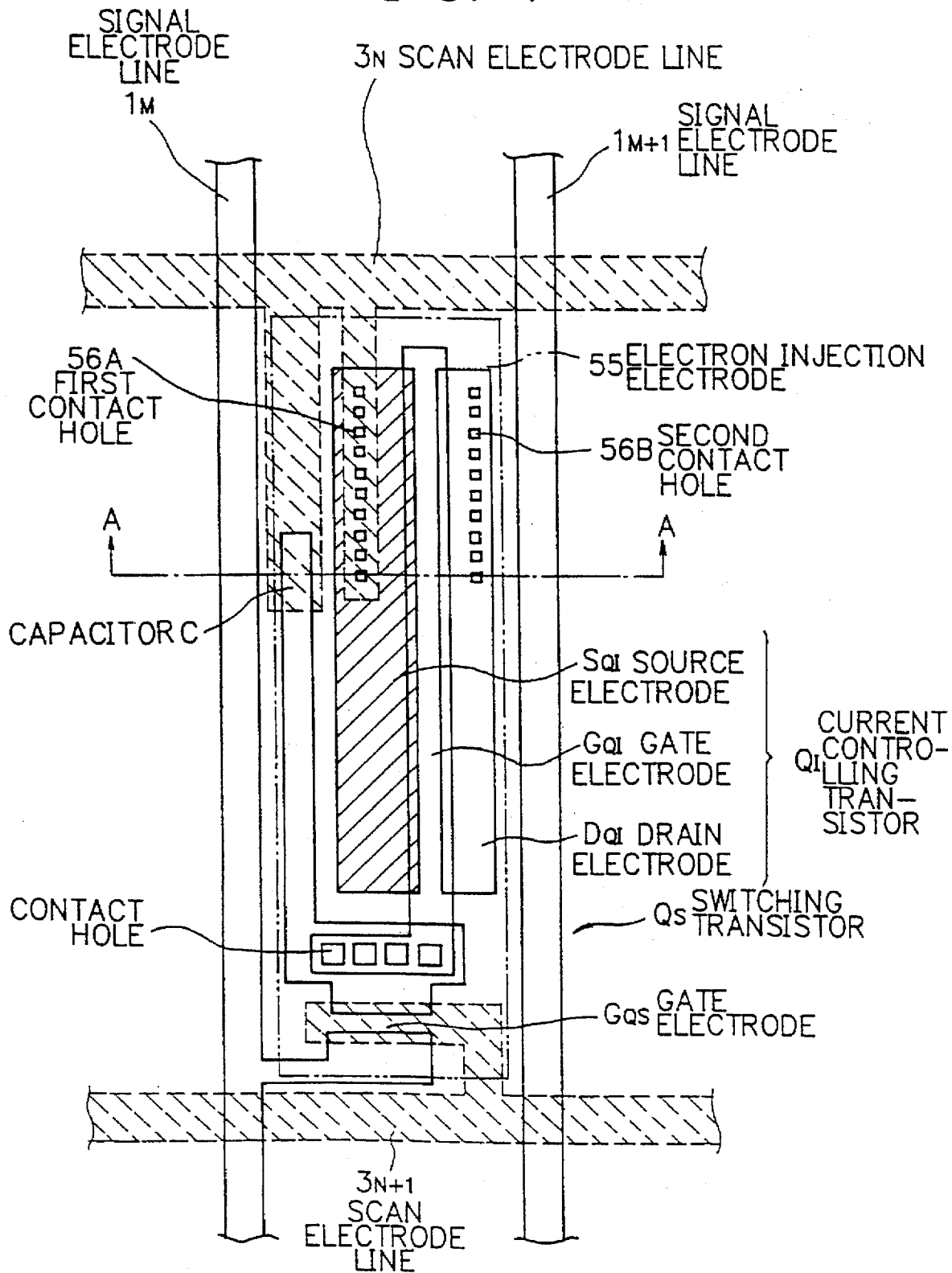


FIG. 4



# Explore Litigation Insights

Docket Alarm provides insights to develop a more informed litigation strategy and the peace of mind of knowing you're on top of things.

## Real-Time Litigation Alerts



Keep your litigation team up-to-date with **real-time alerts** and advanced team management tools built for the enterprise, all while greatly reducing PACER spend.

Our comprehensive service means we can handle Federal, State, and Administrative courts across the country.

## Advanced Docket Research



With over 230 million records, Docket Alarm's cloud-native docket research platform finds what other services can't. Coverage includes Federal, State, plus PTAB, TTAB, ITC and NLRB decisions, all in one place.

Identify arguments that have been successful in the past with full text, pinpoint searching. Link to case law cited within any court document via Fastcase.

## Analytics At Your Fingertips



Learn what happened the last time a particular judge, opposing counsel or company faced cases similar to yours.

Advanced out-of-the-box PTAB and TTAB analytics are always at your fingertips.

## API

Docket Alarm offers a powerful API (application programming interface) to developers that want to integrate case filings into their apps.

## LAW FIRMS

Build custom dashboards for your attorneys and clients with live data direct from the court.

Automate many repetitive legal tasks like conflict checks, document management, and marketing.

## FINANCIAL INSTITUTIONS

Litigation and bankruptcy checks for companies and debtors.

## E-DISCOVERY AND LEGAL VENDORS

Sync your system to PACER to automate legal marketing.