



US006809706B2

(12) **United States Patent**  
**Shimoda**

(10) **Patent No.:** **US 6,809,706 B2**  
(45) **Date of Patent:** **Oct. 26, 2004**

(54) **DRIVE CIRCUIT FOR DISPLAY DEVICE**

(75) Inventor: **Masamichi Shimoda, Tokyo (JP)**

(73) Assignee: **NEC Corporation, Tokyo (JP)**

(\* ) Notice: Subject to any disclaimer, the term of this patent is extended or adjusted under 35 U.S.C. 154(b) by 264 days.

(21) Appl. No.: **10/211,534**

(22) Filed: **Aug. 5, 2002**

(65) **Prior Publication Data**

US 2003/0030603 A1 Feb. 13, 2003

(30) **Foreign Application Priority Data**

Aug. 9, 2001 (JP) ..... 2001-242103

(51) **Int. Cl.<sup>7</sup>** ..... **G09G 3/10**; G09G 3/30;  
G09G 3/36

(52) **U.S. Cl.** ..... **345/55**; 345/78; 345/82;  
345/92; 345/98; 345/100; 315/169.1; 315/169.3

(58) **Field of Search** ..... 345/74.1, 76, 78,  
345/82, 89, 92, 98, 100, 204, 214, 211;  
315/169.1, 169.3, 302

(56) **References Cited**

**U.S. PATENT DOCUMENTS**

5,008,657 A \* 4/1991 Hanson et al. .... 345/74.1  
5,266,936 A \* 11/1993 Saitoh ..... 345/98  
5,721,563 A \* 2/1998 Memida ..... 345/98  
5,847,515 A \* 12/1998 Lee et al. .... 315/169.1  
6,204,610 B1 \* 3/2001 Komiya ..... 315/169.3

6,278,242 B1 \* 8/2001 Cok et al. .... 315/169.1  
6,426,670 B1 \* 7/2002 Tanaka ..... 345/211  
6,433,488 B1 \* 8/2002 Bu ..... 315/169.3  
6,480,178 B1 \* 11/2002 Itakura et al. .... 345/89  
6,525,709 B1 \* 2/2003 O'Callaghan ..... 345/98  
6,528,951 B2 \* 3/2003 Yamazaki et al. .... 315/169.3  
6,590,570 B1 \* 7/2003 Maki ..... 345/100  
2002/0030647 A1 \* 3/2002 Hack et al. .... 345/82

\* cited by examiner

*Primary Examiner*—Bipin Shalwala

*Assistant Examiner*—David L Lewis

(74) *Attorney, Agent, or Firm*—McGinn & Gibb, PLLC

(57) **ABSTRACT**

A drive circuit drives a display device including a plurality of pixels arranged as a matrix. Luminous elements are provided for the individual pixels. In this circuit, the luminous element and a drive transistor for driving the luminous element in each of the pixels are serially connected between a first power supply and a second power supply. A first switching transistor supplies the gate of the drive transistor with a control signal for controlling the drive transistor. A differential amplifier compares a voltage at a connection point between the luminous element and the drive transistor, and a control voltage which is input in the differential amplifier so as to control the luminance of the pixel, thereby generating a control signal. The control signal is supplied to the gate of the drive transistor via the first switching transistor. A hold capacitor holds a voltage between the gate and the source of the drive transistor. Thus, the drive circuit does not present a luminance unevenness, enables a high gradation display, prevents a decrease of the yield and the aperture ratio, and decreases the price and the power consumption.

**12 Claims, 9 Drawing Sheets**

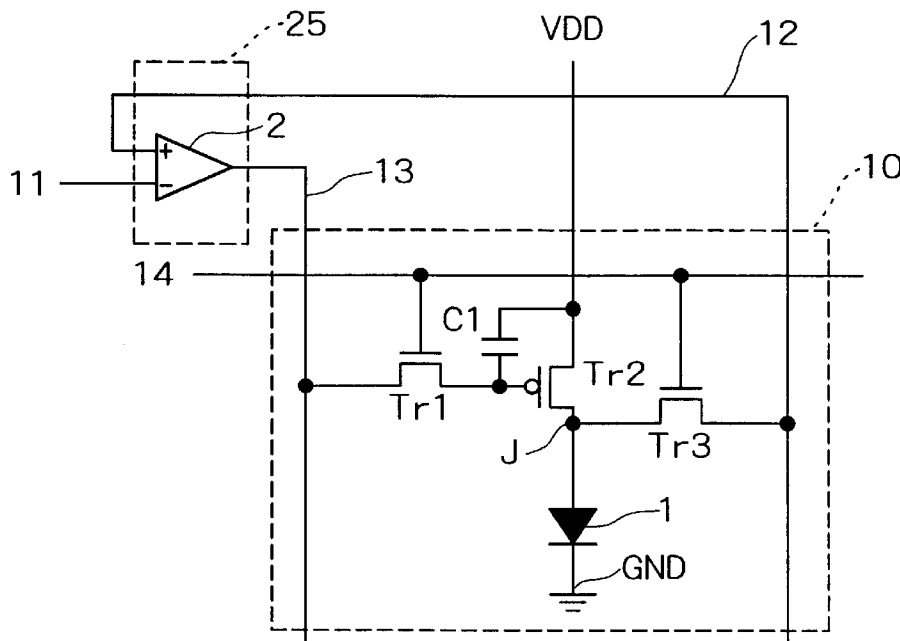
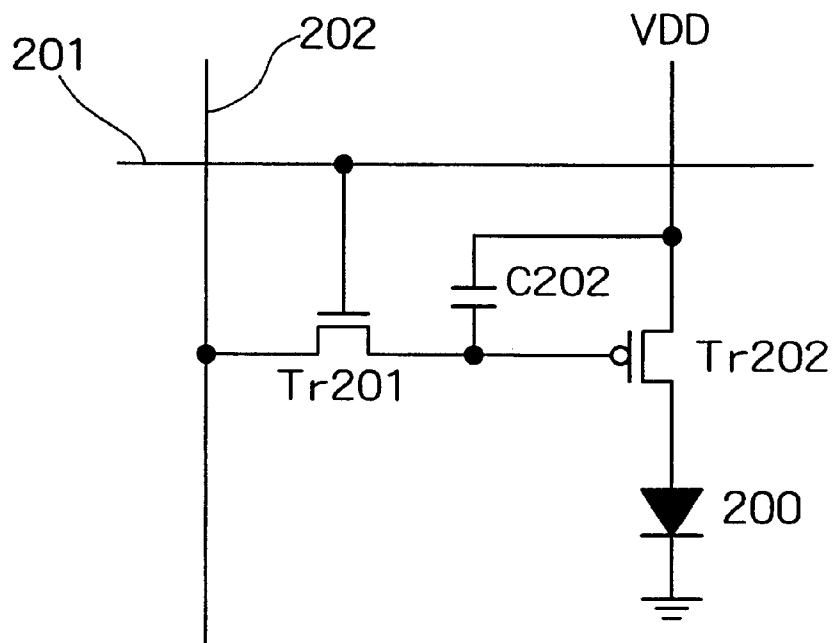
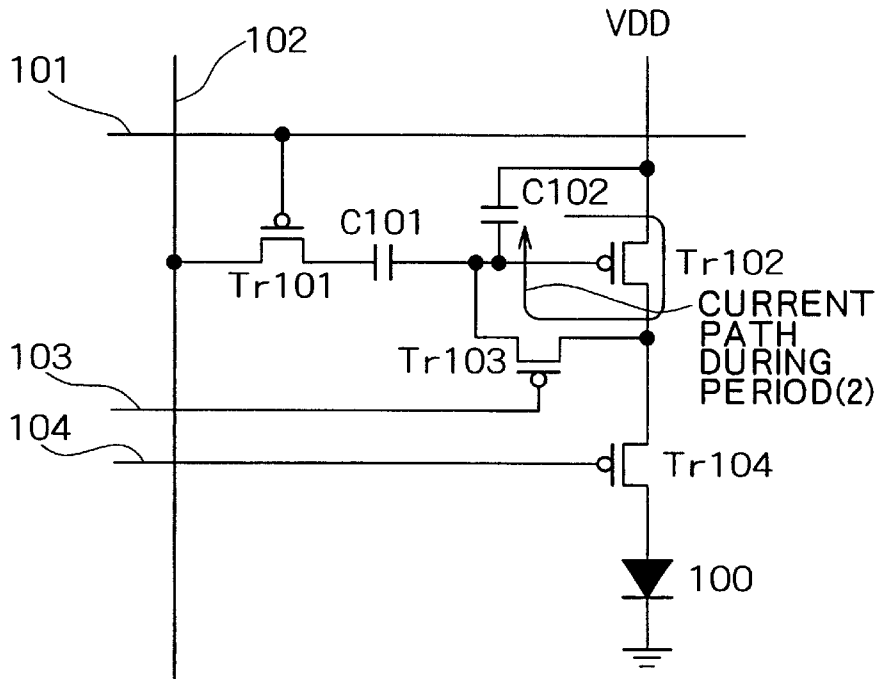


FIG. 1 (PRIOR ART)



### FIG. 2 (PRIOR ART)



### FIG. 3 (PRIOR ART)

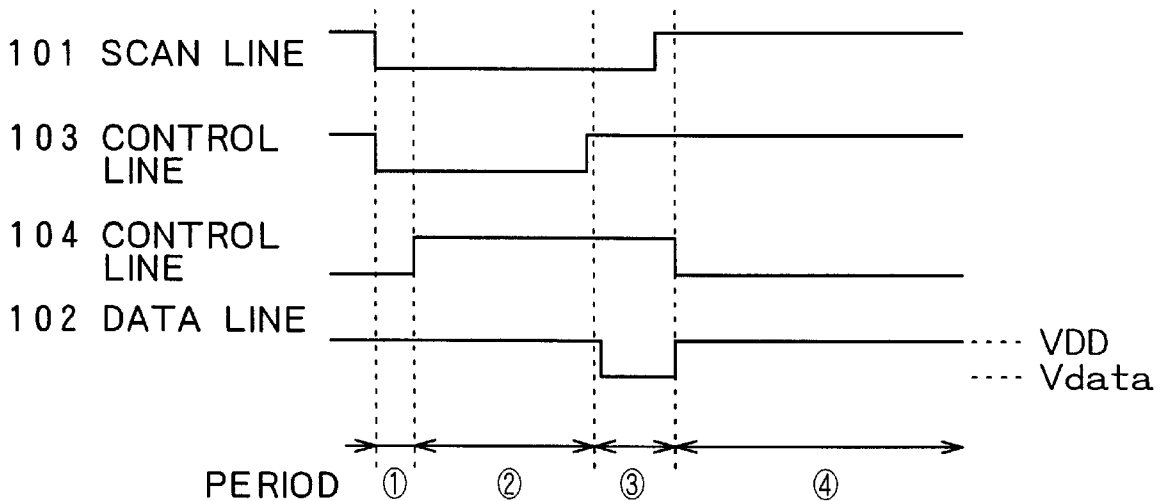




FIG. 6

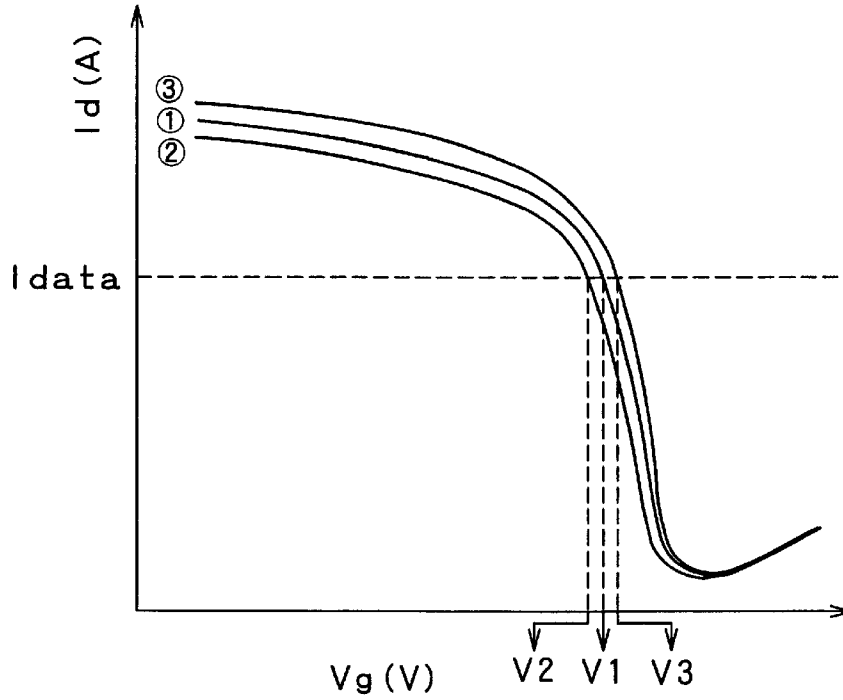
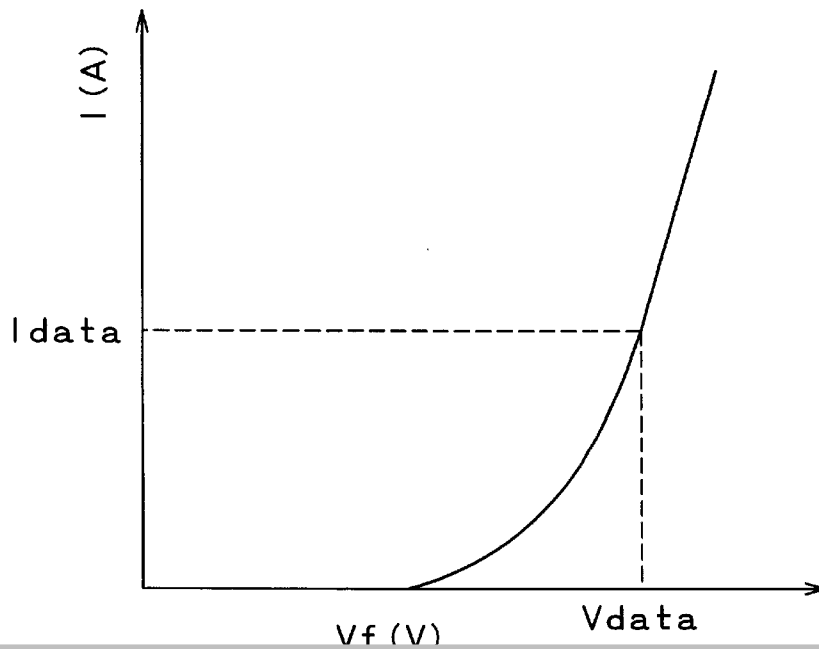


FIG. 7



# Explore Litigation Insights

Docket Alarm provides insights to develop a more informed litigation strategy and the peace of mind of knowing you're on top of things.

## Real-Time Litigation Alerts



Keep your litigation team up-to-date with **real-time alerts** and advanced team management tools built for the enterprise, all while greatly reducing PACER spend.

Our comprehensive service means we can handle Federal, State, and Administrative courts across the country.

## Advanced Docket Research



With over 230 million records, Docket Alarm's cloud-native docket research platform finds what other services can't. Coverage includes Federal, State, plus PTAB, TTAB, ITC and NLRB decisions, all in one place.

Identify arguments that have been successful in the past with full text, pinpoint searching. Link to case law cited within any court document via Fastcase.

## Analytics At Your Fingertips



Learn what happened the last time a particular judge, opposing counsel or company faced cases similar to yours.

Advanced out-of-the-box PTAB and TTAB analytics are always at your fingertips.

## API

Docket Alarm offers a powerful API (application programming interface) to developers that want to integrate case filings into their apps.

## LAW FIRMS

Build custom dashboards for your attorneys and clients with live data direct from the court.

Automate many repetitive legal tasks like conflict checks, document management, and marketing.

## FINANCIAL INSTITUTIONS

Litigation and bankruptcy checks for companies and debtors.

## E-DISCOVERY AND LEGAL VENDORS

Sync your system to PACER to automate legal marketing.