




**Exhibit 2008**

---

**Claim C**  
**For**  
**Microsoft Cloud storage**

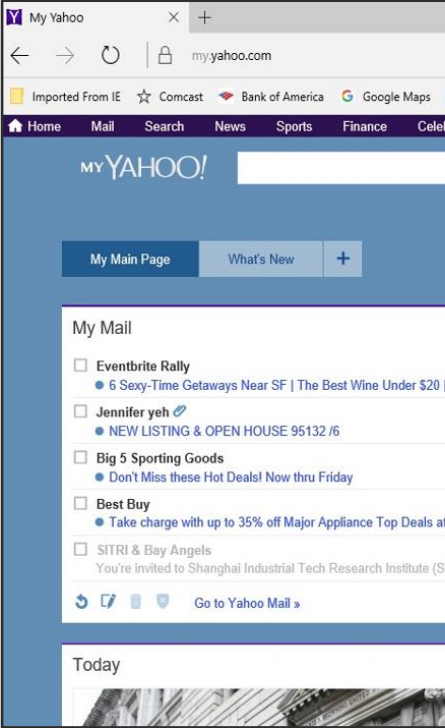


# Claim 1 vs. Microsoft Devices

| Claim 1 of the '254 Patent  | Microsoft Wireless   |
|---|--|
| <p>1. A wireless device accessing a remote storage space, the wireless device comprising:</p> | <p>Microsoft Windows wireless device such as Surface provided by Microsoft OneDrive, Microsoft Surface</p>  <p>Roll over image to zoom</p> |



# Claim 1 vs. Microsoft Devices

| Claim 1 of the '254 Patent  | Microsoft Wireless  |
|---|---|
| <p>at least one cache storage for caching data received from the internet, and</p>  | <p>Microsoft Surface Pro comprises at least one cache storage for caching files/data such as for Edge web browser, for caching</p>                                  |
| <p>one computer-readable storage device comprising program instructions which, when executed by the wireless device, configure the wireless device accessing the remote space, wherein the program instructions comprise:</p> | <p>Microsoft Surface Pro has one computer-readable storage device comprising program instructions which, when executed by Microsoft Surface Pro, configure Microsoft Surface Pro to access the remote storage space provided by Microsoft OneDrive:</p> |



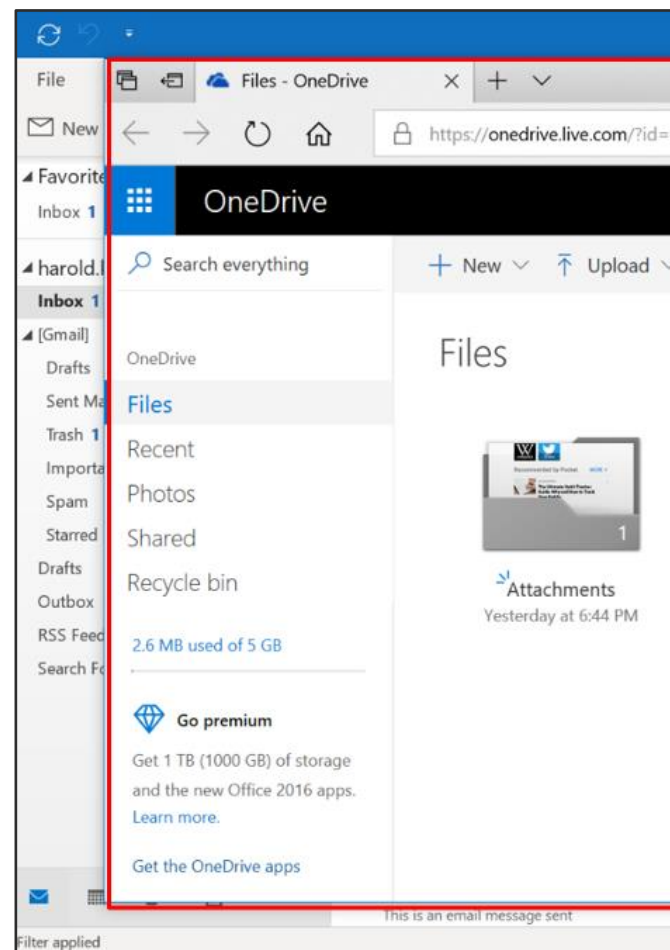
# Claim 1 vs. Microsoft Devices

## Claim 1 of the '254 Patent

program instructions for wireless device establishing a communication link for accessing the remote storage space served by a first server;

## Microsoft Wireless

Program instructions on the computer-readable establishing a communication link, e.g. through Wi-Fi, from a first server, i.e. a server for Microsoft OneDrive, via a Microsoft Surface Pro. The OneDrive server all registered with the OneDrive, e.g. only the user can





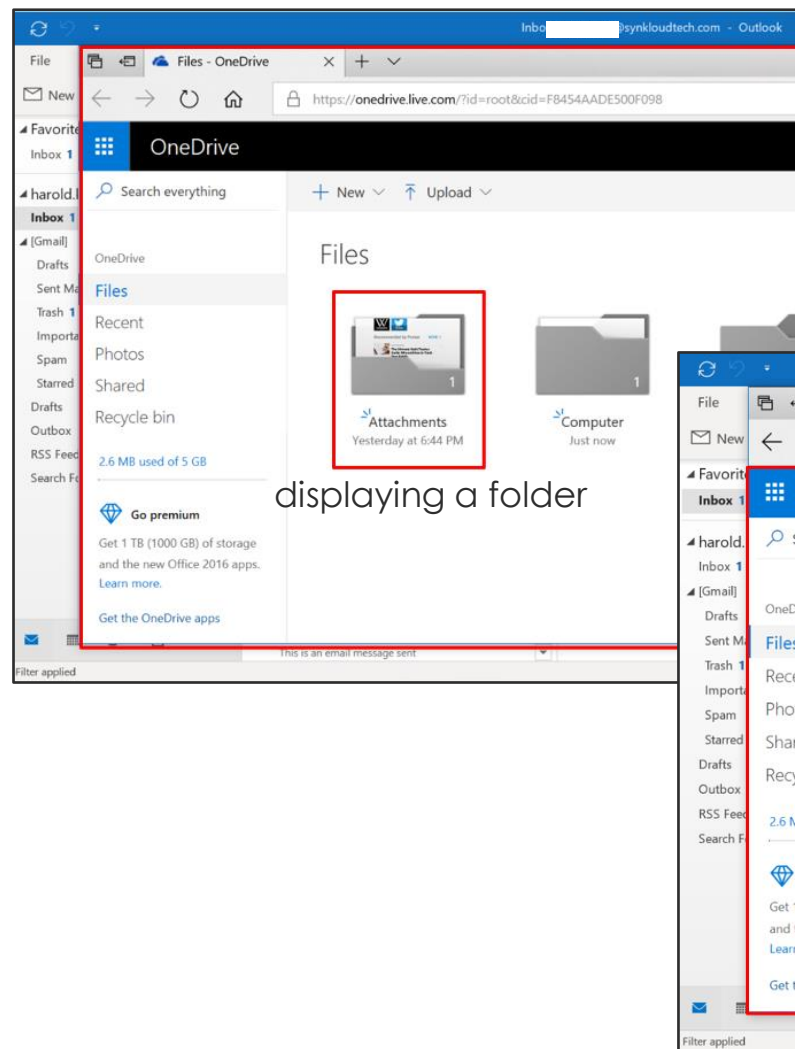
# Claim 1 vs. Microsoft Devices

## Claim 1 of the '254 Patent

program instructions for the wireless device displaying the remote storage space upon receiving information of the remote storage space from the first server; and

## Microsoft Wireless

Program instructions on the computer-readable storage medium for displaying the remote storage space, i.e. files or folders stored in the remote storage space with the first server, i.e. the server of OneDrive.



# Explore Litigation Insights

Docket Alarm provides insights to develop a more informed litigation strategy and the peace of mind of knowing you're on top of things.

## Real-Time Litigation Alerts



Keep your litigation team up-to-date with **real-time alerts** and advanced team management tools built for the enterprise, all while greatly reducing PACER spend.

Our comprehensive service means we can handle Federal, State, and Administrative courts across the country.

## Advanced Docket Research



With over 230 million records, Docket Alarm's cloud-native docket research platform finds what other services can't. Coverage includes Federal, State, plus PTAB, TTAB, ITC and NLRB decisions, all in one place.

Identify arguments that have been successful in the past with full text, pinpoint searching. Link to case law cited within any court document via Fastcase.

## Analytics At Your Fingertips



Learn what happened the last time a particular judge, opposing counsel or company faced cases similar to yours.

Advanced out-of-the-box PTAB and TTAB analytics are always at your fingertips.

## API

Docket Alarm offers a powerful API (application programming interface) to developers that want to integrate case filings into their apps.

## LAW FIRMS

Build custom dashboards for your attorneys and clients with live data direct from the court.

Automate many repetitive legal tasks like conflict checks, document management, and marketing.

## FINANCIAL INSTITUTIONS

Litigation and bankruptcy checks for companies and debtors.

## E-DISCOVERY AND LEGAL VENDORS

Sync your system to PACER to automate legal marketing.