

[54] **RECONFIGURABLE DATA STORAGE SYSTEM**

[75] Inventors: **James Thomas Brady; Paul T. Burton**, both of San Jose; **Alden B. Johnson**, Los Gatos; **Jaishankar Moothedath Menon; Steven Gerdt**, both of San Jose, all of Calif.

[73] Assignee: **International Business Machines Corporation**, Armonk, N.Y.

[21] Appl. No.: **614,460**

[22] Filed: **Mar. 12, 1996**

[51] Int. Cl.<sup>6</sup> ..... **G06F 12/00**

[52] U.S. Cl. .... **395/180; 711/173**

[58] **Field of Search** ..... 395/180, 181, 395/182.03, 182.06, 410, 412, 413, 419, 183.05, 182.07, 651; 711/100, 153, 147, 170, 171, 172, 173, 202, 203

[56] **References Cited**

**U.S. PATENT DOCUMENTS**

- 4,435,752 3/1984 Winkelman .
- 4,601,012 7/1986 Aiken, Jr. .
- 5,018,060 5/1991 Galb et al. .
- 5,148,432 9/1992 Gordon et al. .... 371/10.1

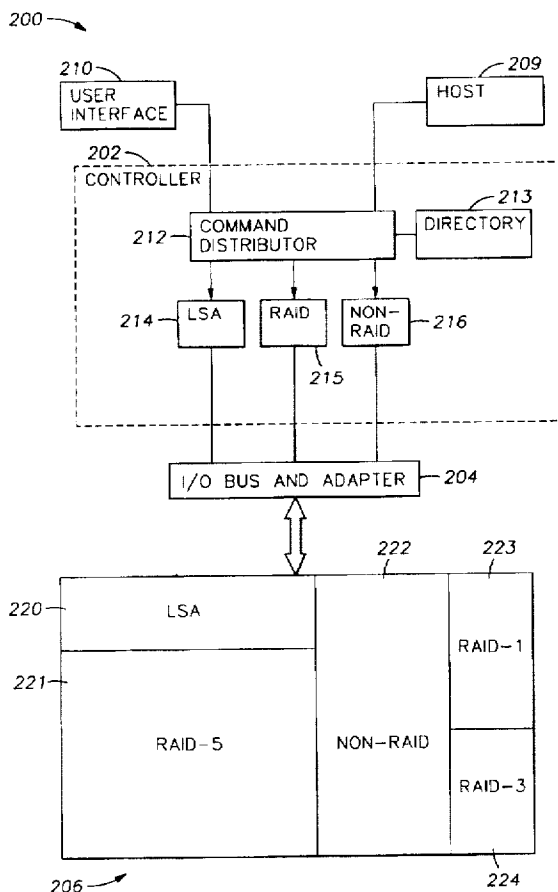
- 5,301,297 4/1994 Menon et al. .... 395/425
- 5,303,244 4/1994 Watson ..... 371/10.1
- 5,333,277 7/1994 Searls ..... 395/325
- 5,392,244 2/1995 Jacobson et al. .... 365/200
- 5,410,667 4/1995 Belsan et al. .
- 5,465,343 11/1995 Henson et al. .... 395/439
- 5,491,810 2/1996 Allen ..... 395/444
- 5,542,065 7/1996 Burkes et al. .... 395/441
- 5,546,558 8/1996 Jacobson et al. .... 395/441
- 5,553,285 9/1996 Krakauer et al. .... 395/601
- 5,588,138 12/1996 Bai et al. .... 711/173
- 5,592,638 1/1997 Onodera ..... 711/173
- 5,602,995 2/1997 Hendel et al. .... 395/250

*Primary Examiner*—Albert Decady  
*Attorney, Agent, or Firm*—Baker Maxham Jester & Meador

[57] **ABSTRACT**

A system for managing data storage devices of a data storage subsystem. A data storage system includes a controller coupled to multiple data storage devices. In response to a request, the controller allocates the devices' storage space into a number of storage partitions or "virtual devices." The request specifies the size and function mode for each storage partition. Each storage partition, having the requested size, is operated according to its requested function mode. This involves mapping access commands, which specify virtual addresses, to the proper physical addresses of the appropriate data storage devices.

**61 Claims, 7 Drawing Sheets**



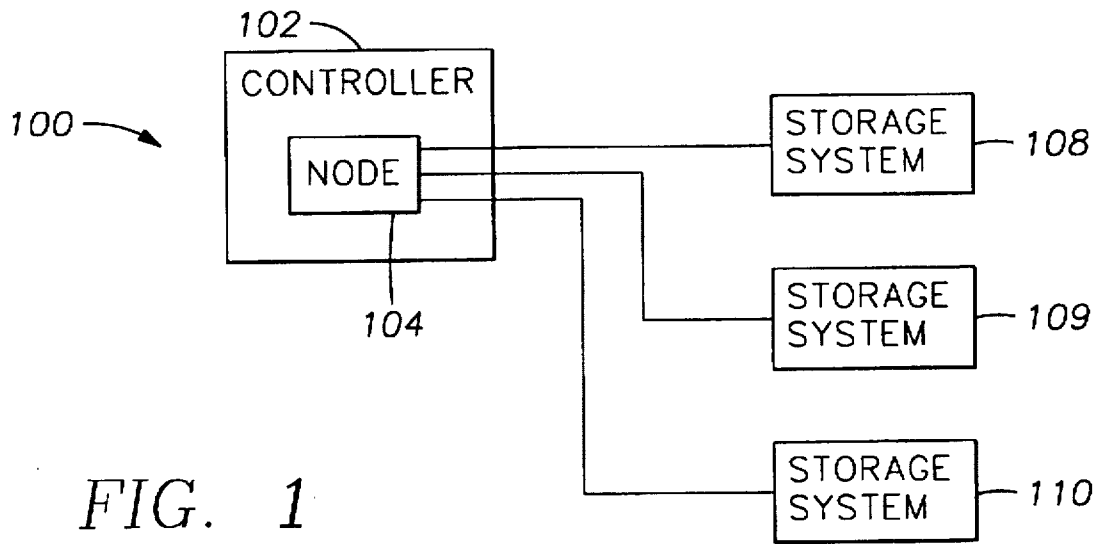


FIG. 1  
(PRIOR ART)

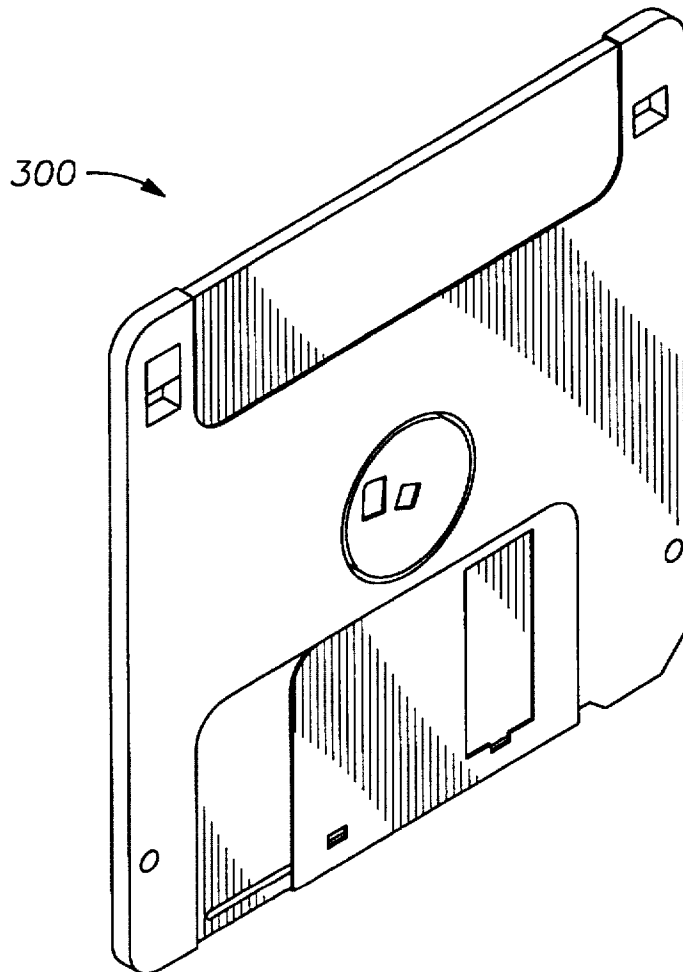


FIG. 3

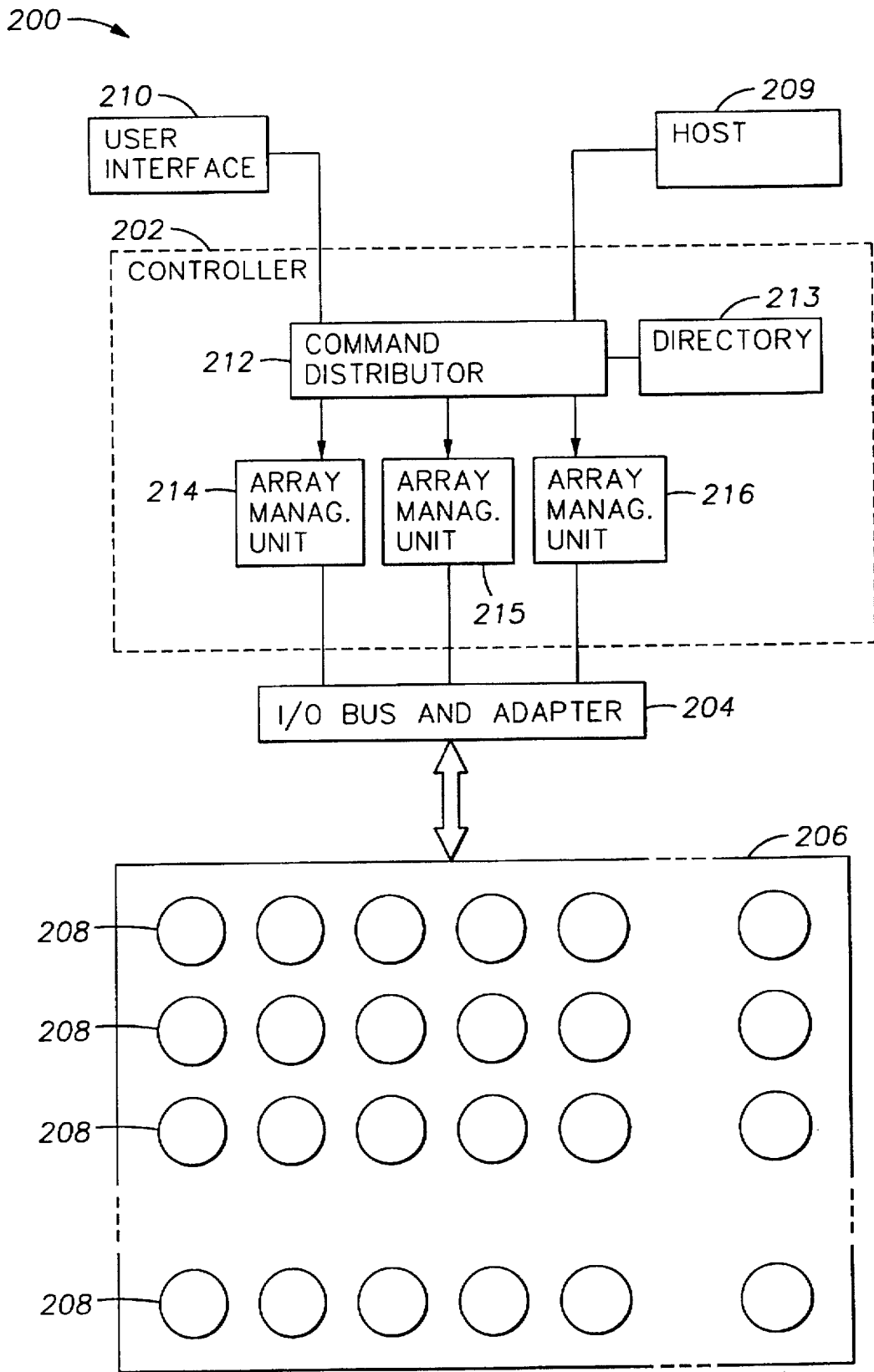


FIG. 2A

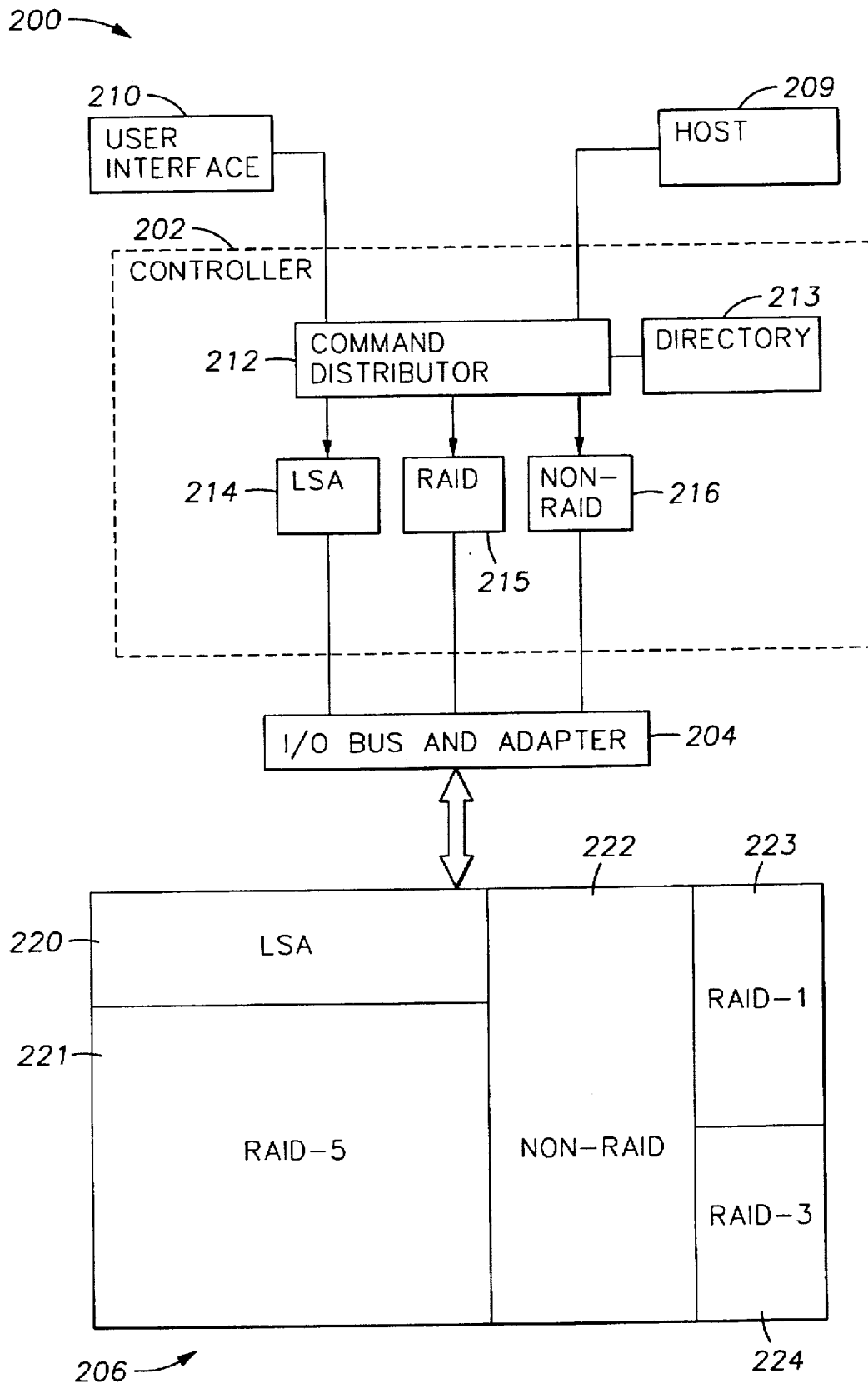


FIG. 2B

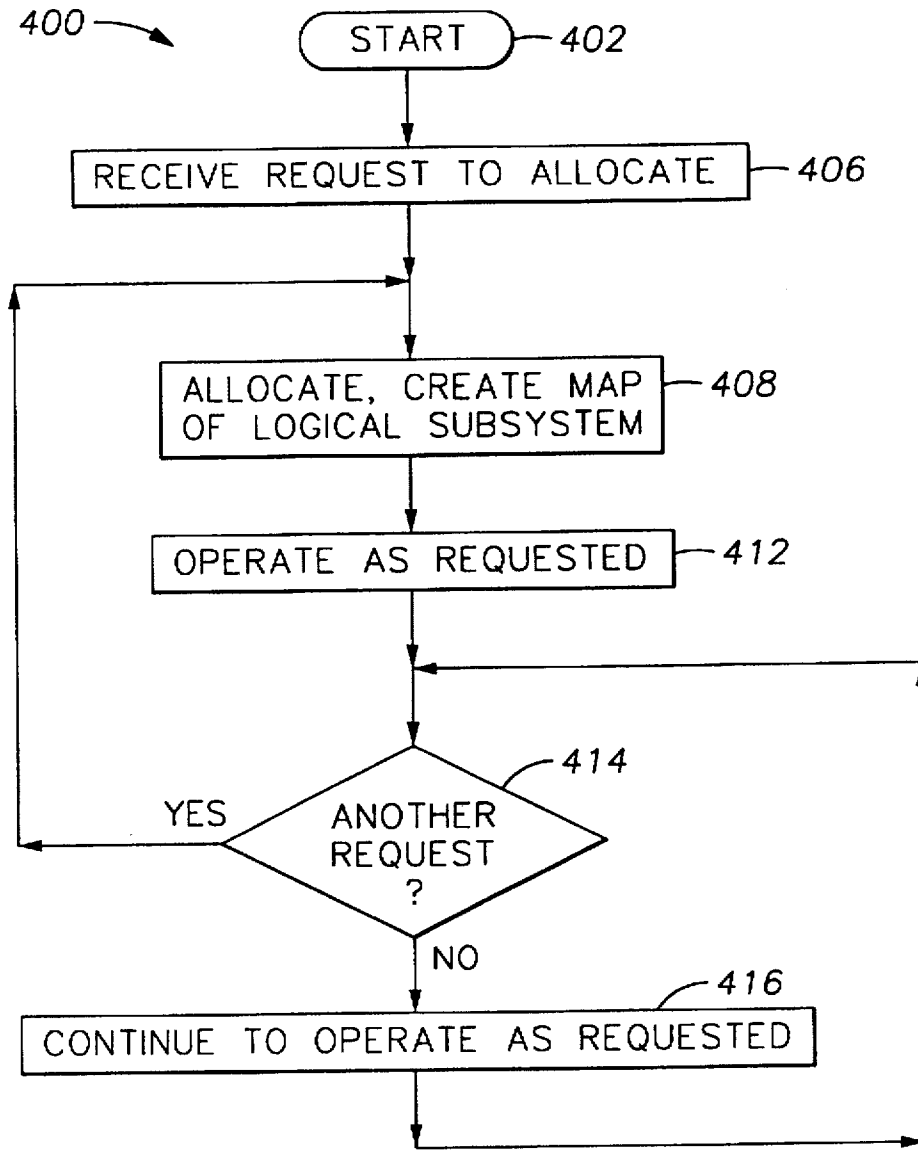


FIG. 4

# Explore Litigation Insights

Docket Alarm provides insights to develop a more informed litigation strategy and the peace of mind of knowing you're on top of things.

## Real-Time Litigation Alerts



Keep your litigation team up-to-date with **real-time alerts** and advanced team management tools built for the enterprise, all while greatly reducing PACER spend.

Our comprehensive service means we can handle Federal, State, and Administrative courts across the country.

## Advanced Docket Research



With over 230 million records, Docket Alarm's cloud-native docket research platform finds what other services can't. Coverage includes Federal, State, plus PTAB, TTAB, ITC and NLRB decisions, all in one place.

Identify arguments that have been successful in the past with full text, pinpoint searching. Link to case law cited within any court document via Fastcase.

## Analytics At Your Fingertips



Learn what happened the last time a particular judge, opposing counsel or company faced cases similar to yours.

Advanced out-of-the-box PTAB and TTAB analytics are always at your fingertips.

## API

Docket Alarm offers a powerful API (application programming interface) to developers that want to integrate case filings into their apps.

## LAW FIRMS

Build custom dashboards for your attorneys and clients with live data direct from the court.

Automate many repetitive legal tasks like conflict checks, document management, and marketing.

## FINANCIAL INSTITUTIONS

Litigation and bankruptcy checks for companies and debtors.

## E-DISCOVERY AND LEGAL VENDORS

Sync your system to PACER to automate legal marketing.