



US005595417A

United States Patent [19]

[11] Patent Number: **5,595,417**

Thoman et al.

[45] Date of Patent: **Jan. 21, 1997**

[54] **TONNEAU COVER FOR A PICK-UP TRUCK**

5,011,214 4/1991 Friesen 296/100

[76] Inventors: **David C. Thoman; Christopfer M. Thoman**, both of 623 W. Mishawaka Ave., Mishawaka, Ind. 46545

5,087,093 2/1992 Repetti 296/100

5,484,178 1/1996 Sandhu et al. 292/173

Primary Examiner—David M. Mitchell
Assistant Examiner—Kia M. Robinson
Attorney, Agent, or Firm—Lee H. McCormick, Jr.

[21] Appl. No.: **507,115**

[57] **ABSTRACT**

[22] Filed: **Jul. 26, 1995**

[51] Int. Cl.⁶ **B60P 7/02**

A tonneau cover for an open bed of a pick-up truck having a front panel, a center panel and a rear panel. Each panel is retained in separate frames defined by first, second, third and fourth reinforcing members which are held in a rectangular shape by corner members. Corner members on a first side of the frame of the center panel retain fixed pins that extend into corresponding openings in a first side wall extending from the open bed and corner members on a second side of the frame retain retractable pins which after being released from retraction extend into corresponding openings in a second side wall extending from the open bed to fix the center panel with respect to the open bed. The front and rear panels are joined to the center panel by rubber hinges. In a first position, the front panel and rear panel engage the top surface of the first and second side wall to define a closed compartment and in a second position, the front panel and rear panel rotate to overlay the center panel and form a work surface with respect to the open bed.

[52] U.S. Cl. **296/100; 70/167; 160/231.2; 292/213**

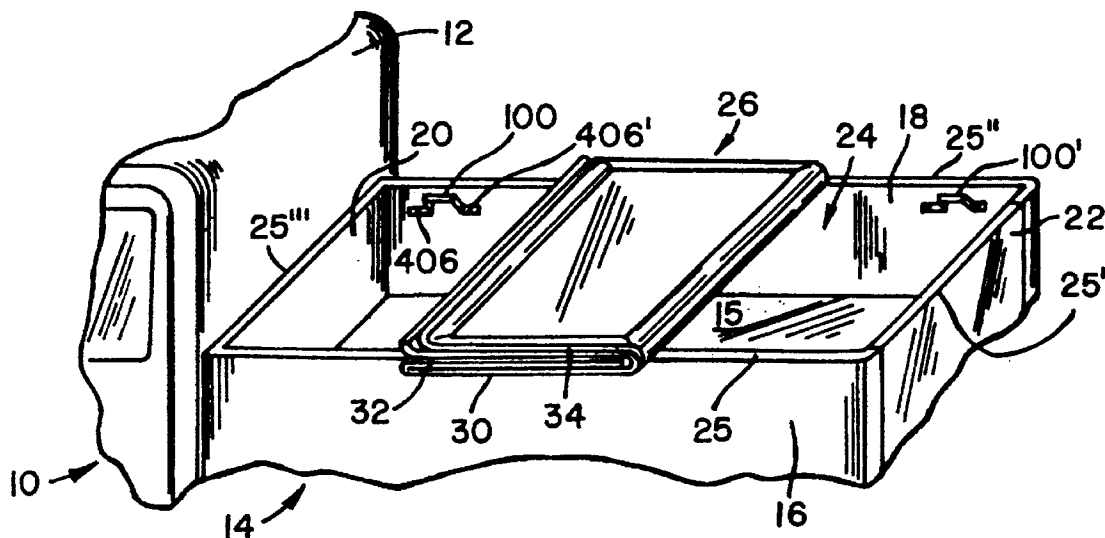
[58] Field of Search 296/100; 70/167, 70/168, 169, 123; 160/35, 231.1, 231.2, 230; 292/173, 198, 213

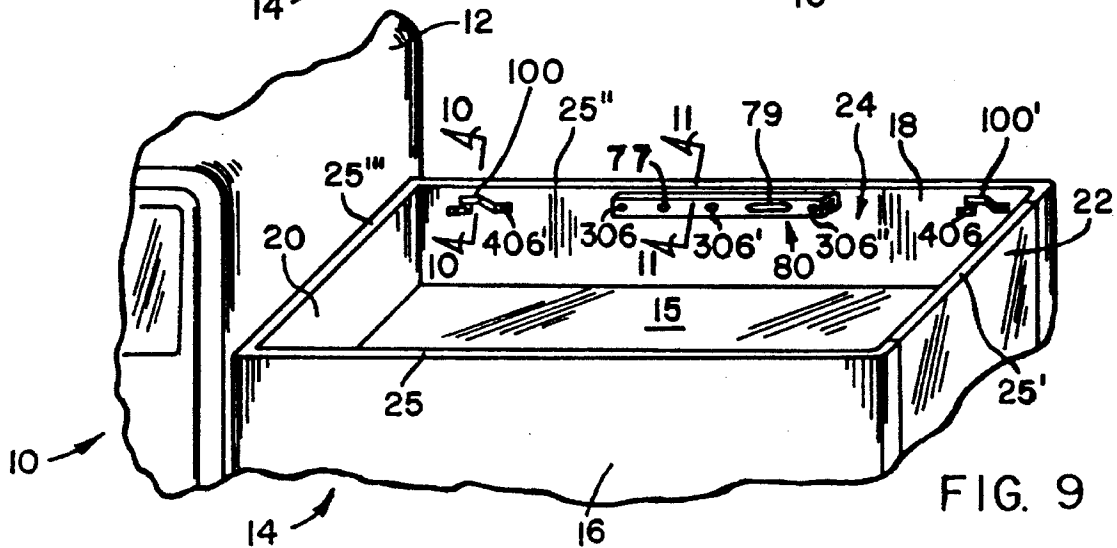
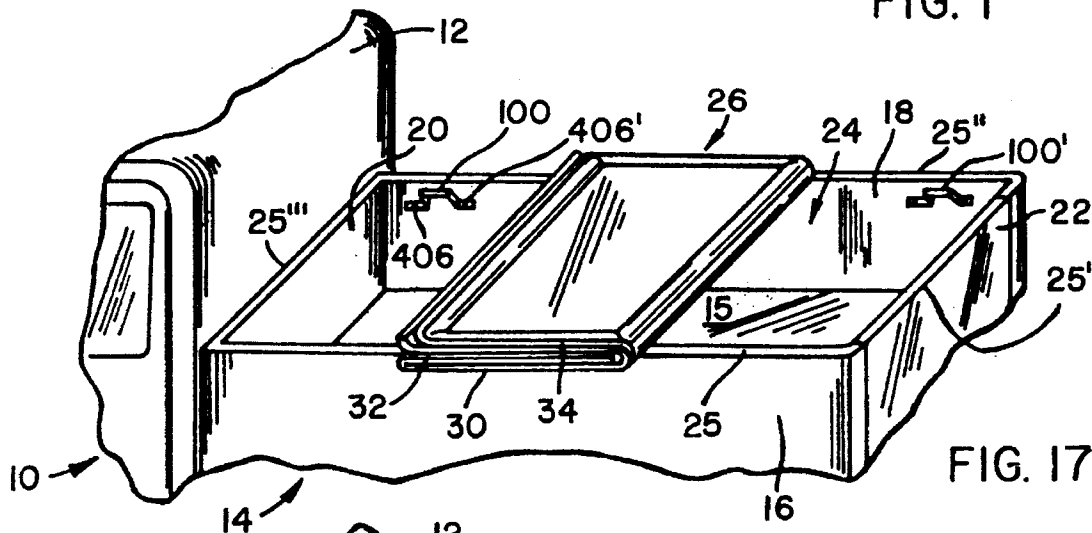
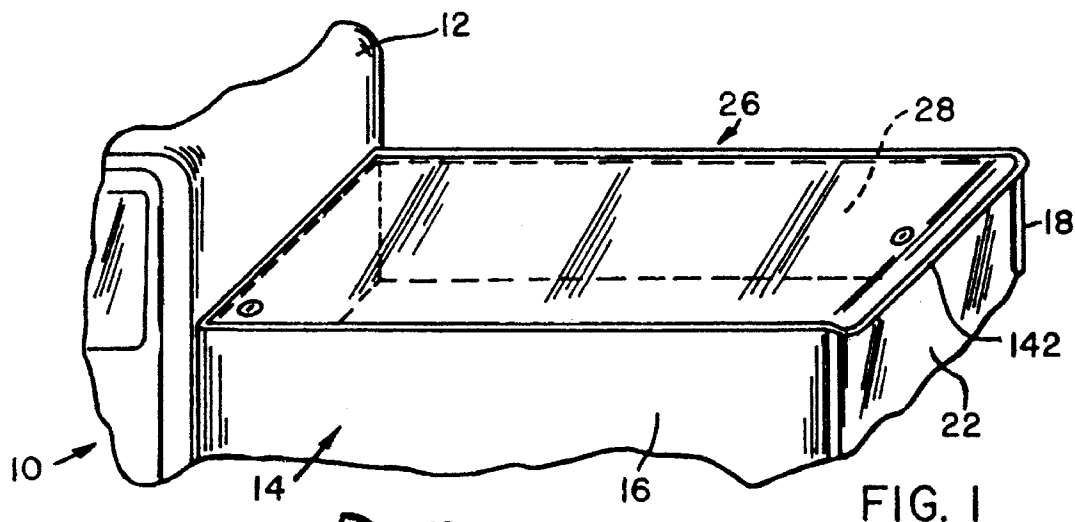
[56] **References Cited**

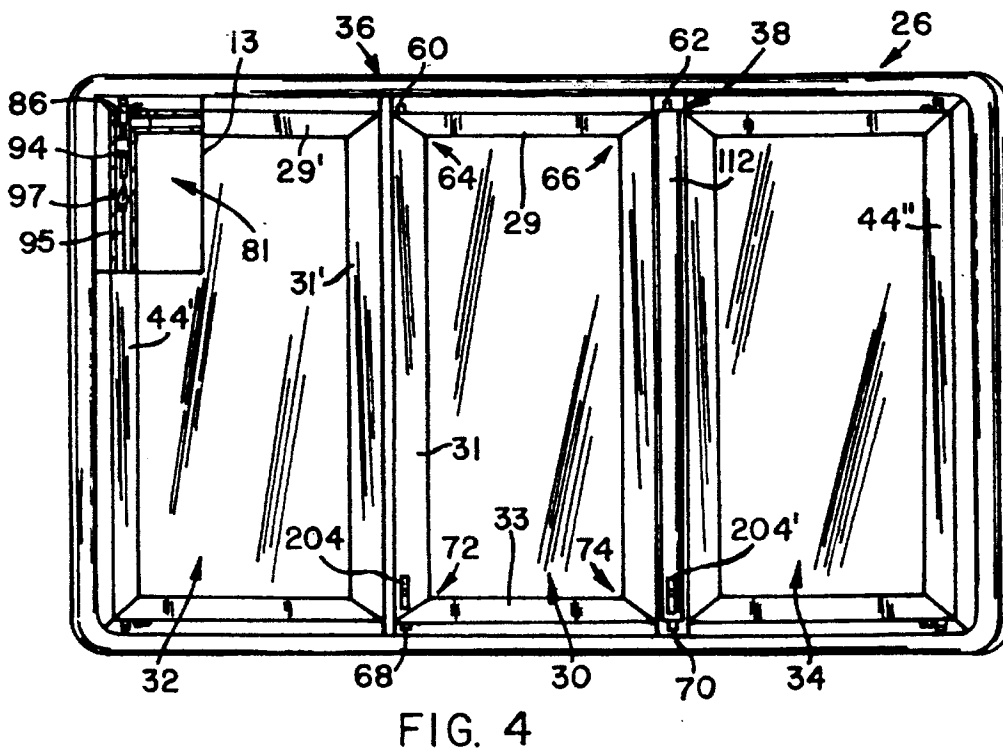
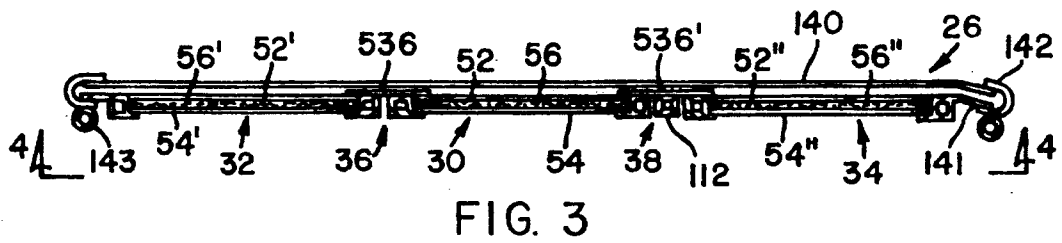
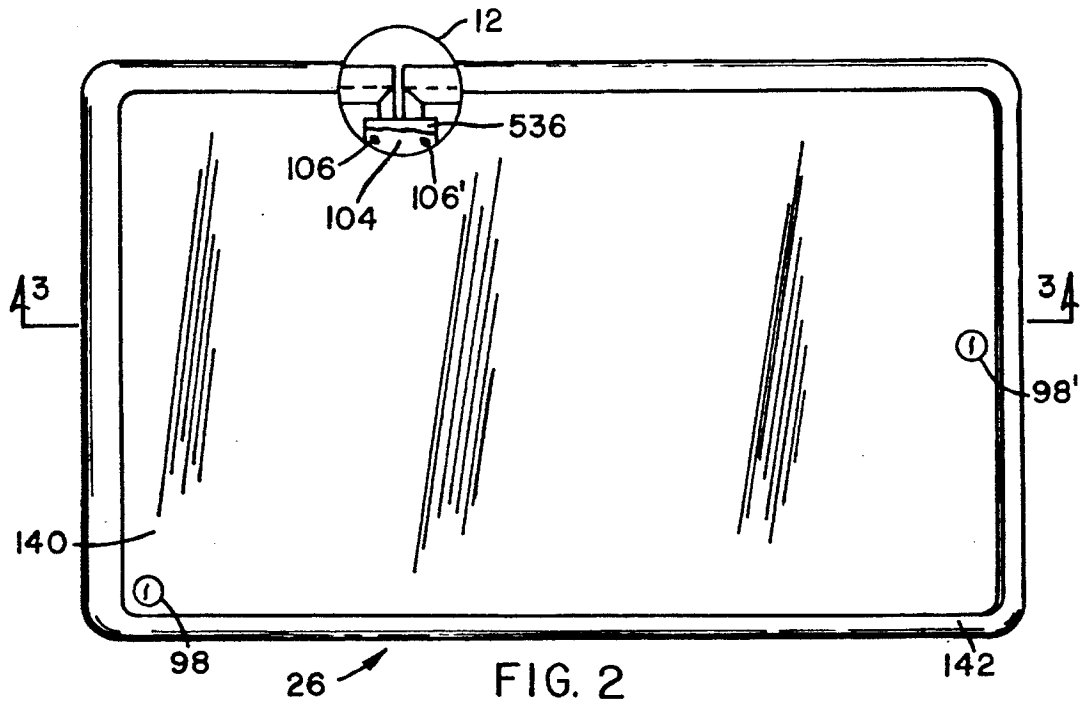
U.S. PATENT DOCUMENTS

761,355	5/1904	Bucknam	292/173 X
3,054,325	9/1962	Crockwell	160/230 X
3,596,484	8/1971	Peters	292/198 X
4,418,954	12/1983	Buckley	296/100
4,550,945	11/1985	Englehardt	296/100
4,673,087	6/1987	Webb	206/600
4,747,441	5/1988	Apolzer	160/84.1
4,824,162	4/1989	Geisler	296/100
4,844,531	7/1989	Kooiker	296/100
4,861,092	8/1989	Bogard	296/100
4,946,217	8/1990	Steffens	296/100

20 Claims, 4 Drawing Sheets







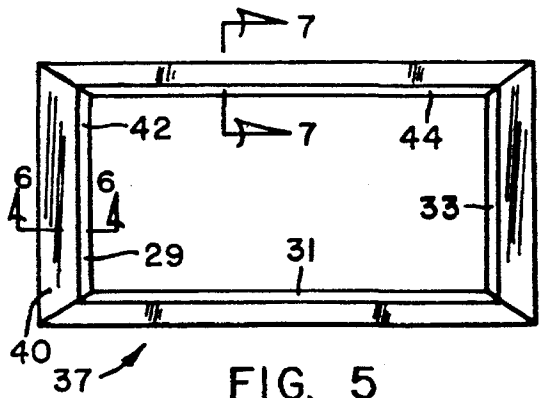


FIG. 5

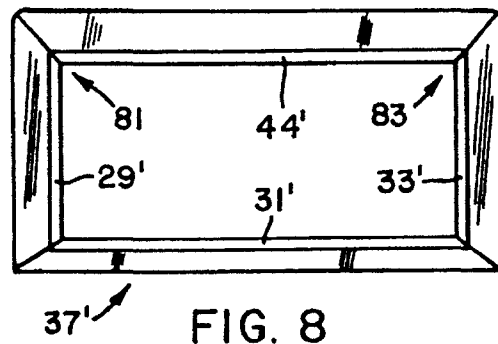


FIG. 8

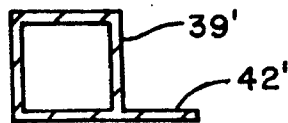


FIG. 7

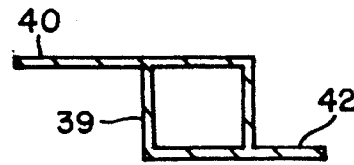


FIG. 6

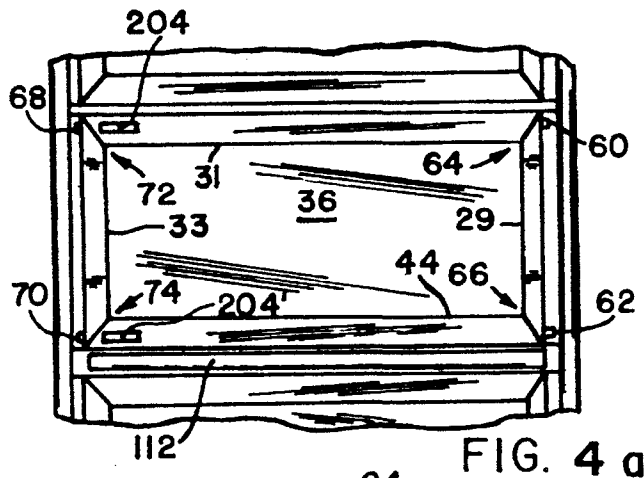


FIG. 4 a

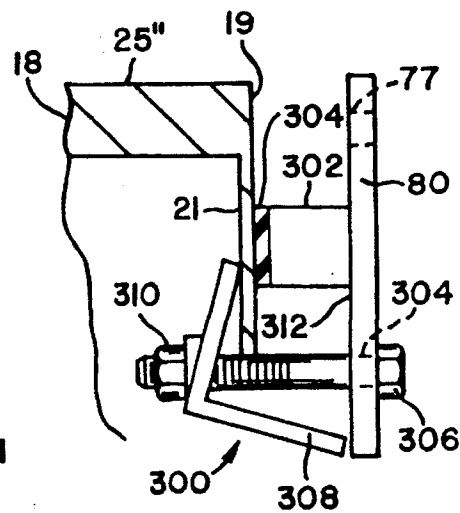


FIG. 11

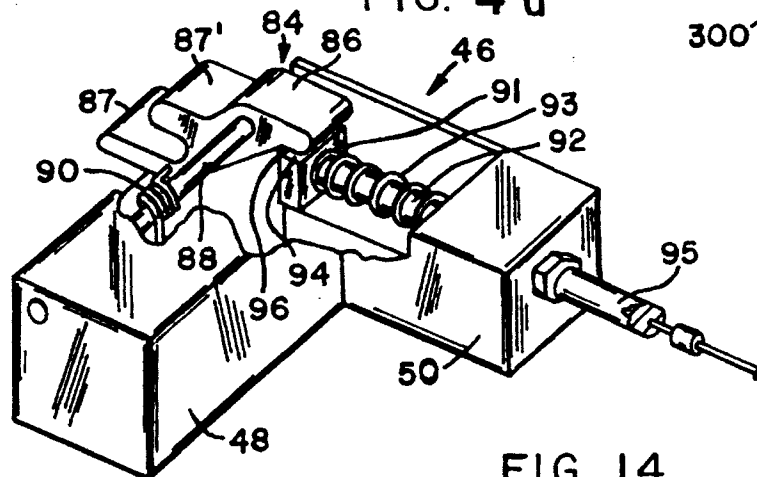


FIG. 14

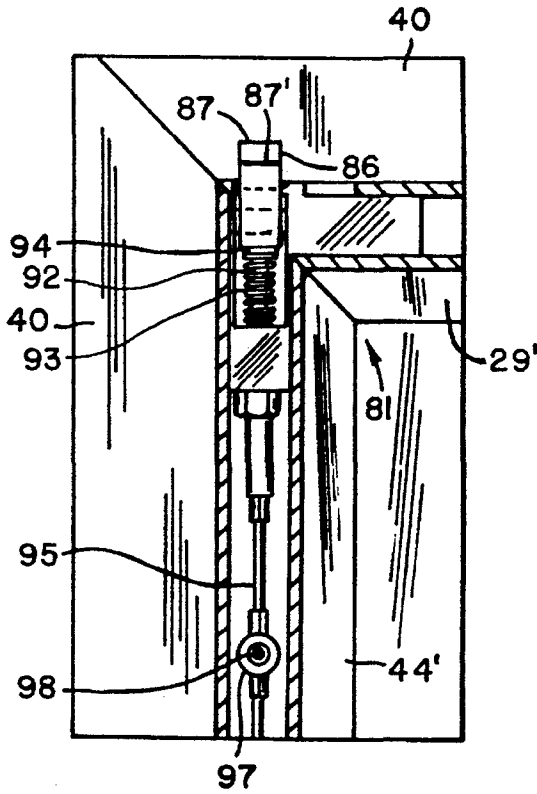


FIG. 13

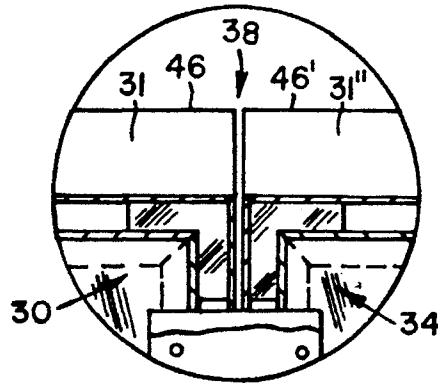


FIG. 12

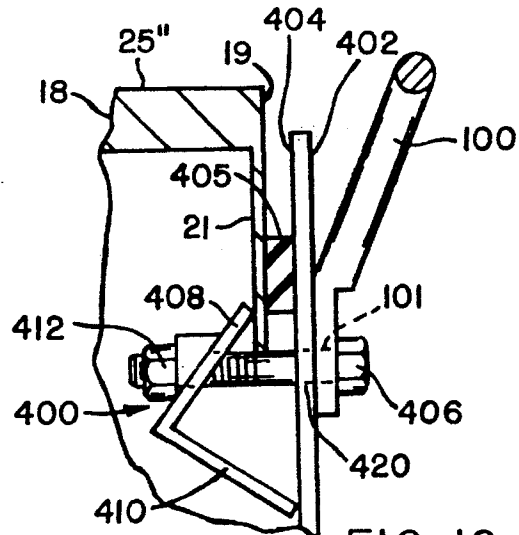


FIG. 10

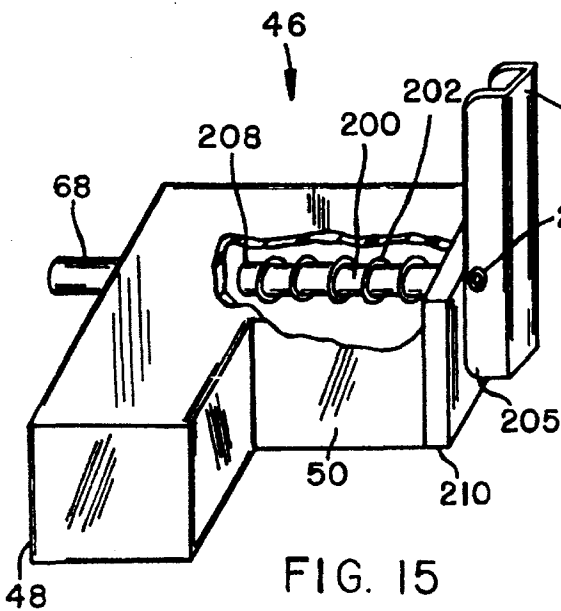


FIG. 15

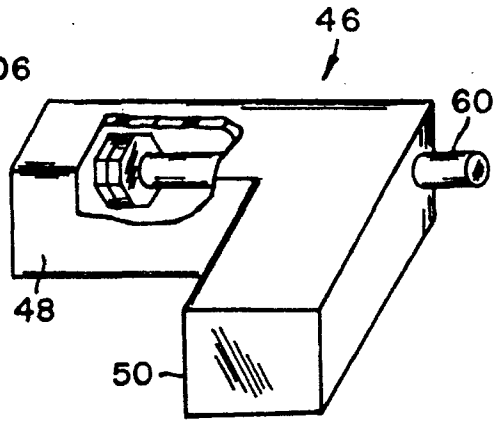


FIG. 16

Explore Litigation Insights

Docket Alarm provides insights to develop a more informed litigation strategy and the peace of mind of knowing you're on top of things.

Real-Time Litigation Alerts



Keep your litigation team up-to-date with **real-time alerts** and advanced team management tools built for the enterprise, all while greatly reducing PACER spend.

Our comprehensive service means we can handle Federal, State, and Administrative courts across the country.

Advanced Docket Research



With over 230 million records, Docket Alarm's cloud-native docket research platform finds what other services can't. Coverage includes Federal, State, plus PTAB, TTAB, ITC and NLRB decisions, all in one place.

Identify arguments that have been successful in the past with full text, pinpoint searching. Link to case law cited within any court document via Fastcase.

Analytics At Your Fingertips



Learn what happened the last time a particular judge, opposing counsel or company faced cases similar to yours.

Advanced out-of-the-box PTAB and TTAB analytics are always at your fingertips.

API

Docket Alarm offers a powerful API (application programming interface) to developers that want to integrate case filings into their apps.

LAW FIRMS

Build custom dashboards for your attorneys and clients with live data direct from the court.

Automate many repetitive legal tasks like conflict checks, document management, and marketing.

FINANCIAL INSTITUTIONS

Litigation and bankruptcy checks for companies and debtors.

E-DISCOVERY AND LEGAL VENDORS

Sync your system to PACER to automate legal marketing.