



US009104277B2

(12) **United States Patent**  
**Wang et al.**

(10) **Patent No.:** **US 9,104,277 B2**  
(45) **Date of Patent:** **Aug. 11, 2015**

(54) **SENSING METHOD AND CALIBRATION METHOD FOR A CAPACITIVE TOUCH PANEL**

(56) **References Cited**

U.S. PATENT DOCUMENTS

(75) Inventors: **Tsun-Min Wang**, Miaoli County (TW);  
**Chun-Chung Huang**, Hsinchu (TW)

(73) Assignee: **ELAN MICROELECTRONICS CORPORATION**, Hsinchu (TW)

(\*) Notice: Subject to any disclaimer, the term of this patent is extended or adjusted under 35 U.S.C. 154(b) by 775 days.

8,378,981 B2 *	2/2013	Yilmaz et al.	345/173
2002/0011991 A1 *	1/2002	Iwasaki et al.	345/173
2002/0070926 A1 *	6/2002	Kavanagh	345/173
2003/0098858 A1 *	5/2003	Perski et al.	345/173
2004/0217945 A1 *	11/2004	Miyamoto et al.	345/173
2006/0125801 A1	6/2006	Hsu et al.	
2006/0267953 A1 *	11/2006	Peterson et al.	345/173
2008/0042994 A1 *	2/2008	Gillespie et al.	345/174
2008/0158172 A1 *	7/2008	Hotelling et al.	345/173
2008/0158174 A1 *	7/2008	Land et al.	345/173
2008/0158182 A1 *	7/2008	Westerman	345/173
2011/0115717 A1 *	5/2011	Hable et al.	345/173
2013/0147732 A1 *	6/2013	Peterson et al.	345/173

(21) Appl. No.: **12/946,230**

FOREIGN PATENT DOCUMENTS

(22) Filed: **Nov. 15, 2010**

TW	200620122	6/2006
TW	200933463 A	8/2009
TW	200945151 A	11/2009

(65) **Prior Publication Data**

US 2011/0115743 A1 May 19, 2011

\* cited by examiner

*Primary Examiner* — Roy Rabindranath

(30) **Foreign Application Priority Data**

Nov. 19, 2009 (TW) ..... 098139327 A

(74) *Attorney, Agent, or Firm* — Muncy, Geissler, Olds & Lowe, P.C.

(51) **Int. Cl.**

**G06F 3/041** (2006.01)  
**G06F 3/044** (2006.01)

(57) **ABSTRACT**

Stimulus regions are defined based on the traces of a capacitive touch panel. A first signal is applied to a first trace in a first direction under a second signal applied to a second trace in a second direction to stimulate the second trace, to sense a stimulus region for an ADC value thereof. Calibration parameters for the traces are determined according to the ADC values of the traces without being touched, and are stored for later sensing the traces for position calculation and multi-finger calculation.

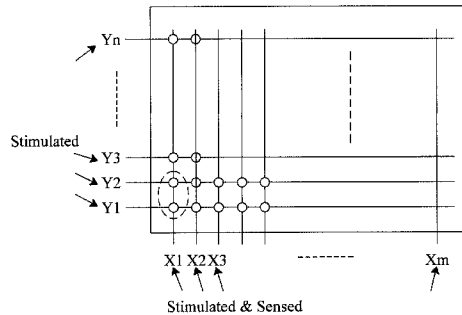
(52) **U.S. Cl.**

CPC ..... **G06F 3/044** (2013.01)

(58) **Field of Classification Search**

CPC ..... G06F 3/044; G06F 3/0418  
USPC ..... 345/173, 178  
See application file for complete search history.

**74 Claims, 14 Drawing Sheets**



Stimulated & Sensed	Stimulated
X1	Y1 or Y1,Y2 or Y1,Y2,Y3 ⋮ or Y1,Y2,Y3...Yn
X1,X2	"
X1,X3	"
⋮	⋮
X1,X2,X3...Xm	"

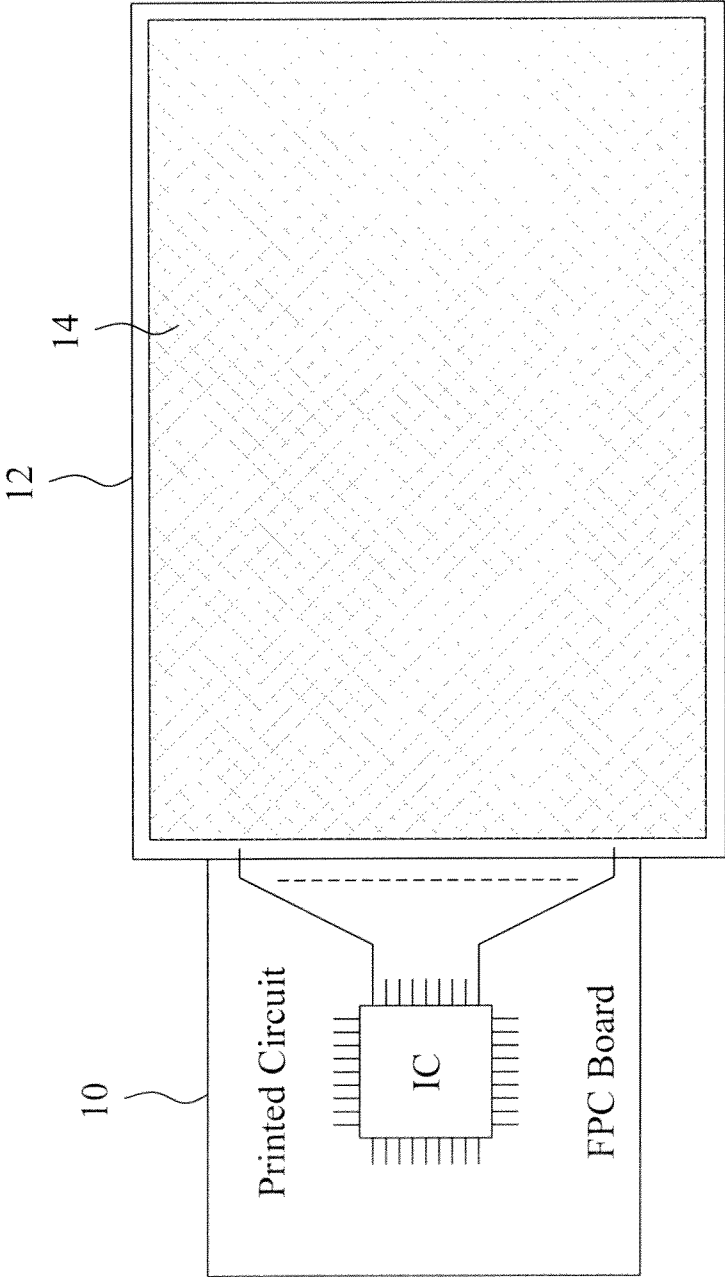


Fig. 1  
Prior Art

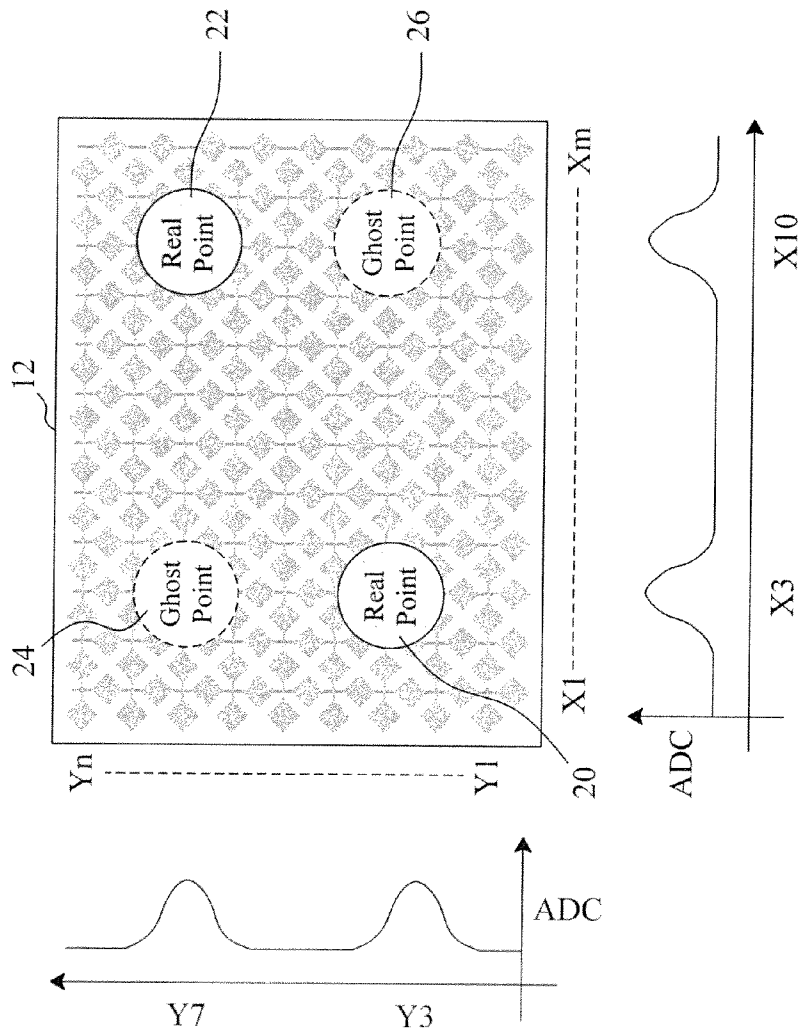


Fig. 2  
Prior Art

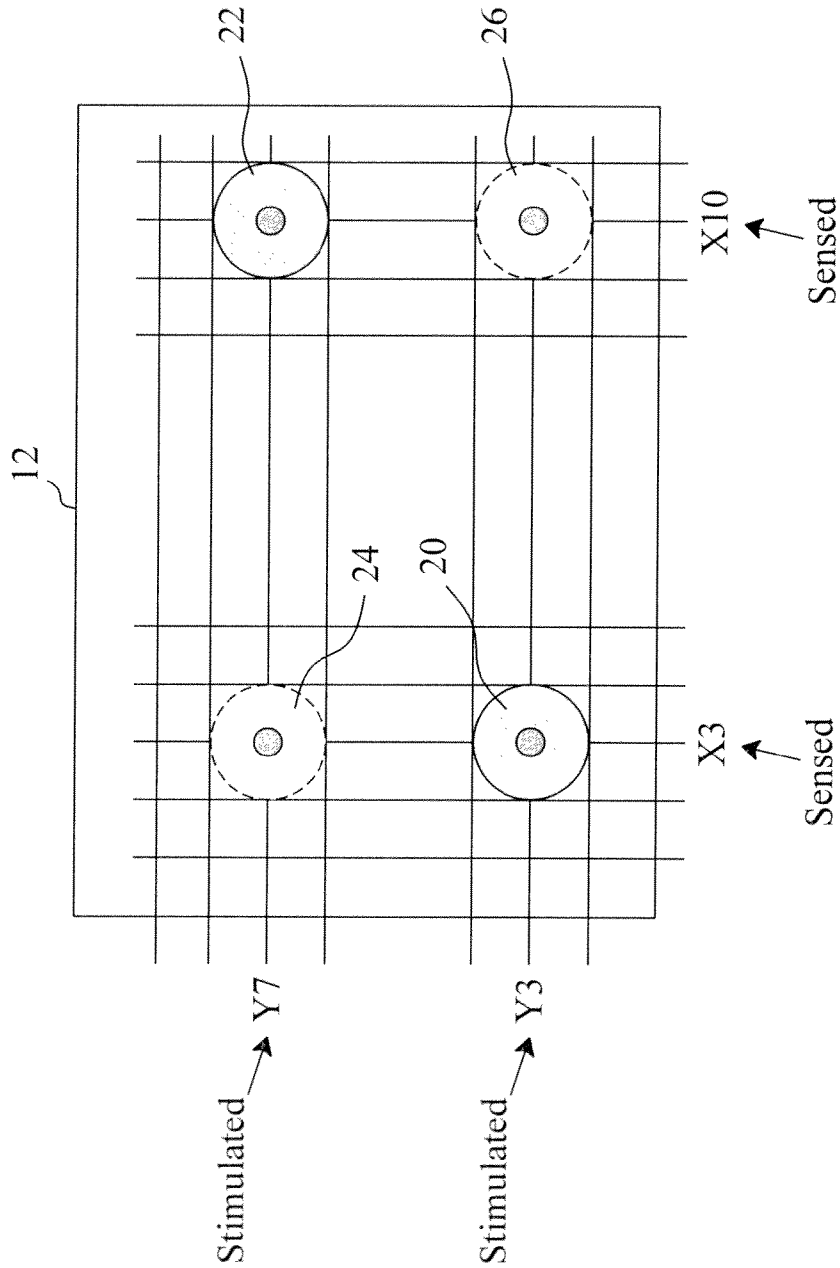


Fig. 3  
Prior Art

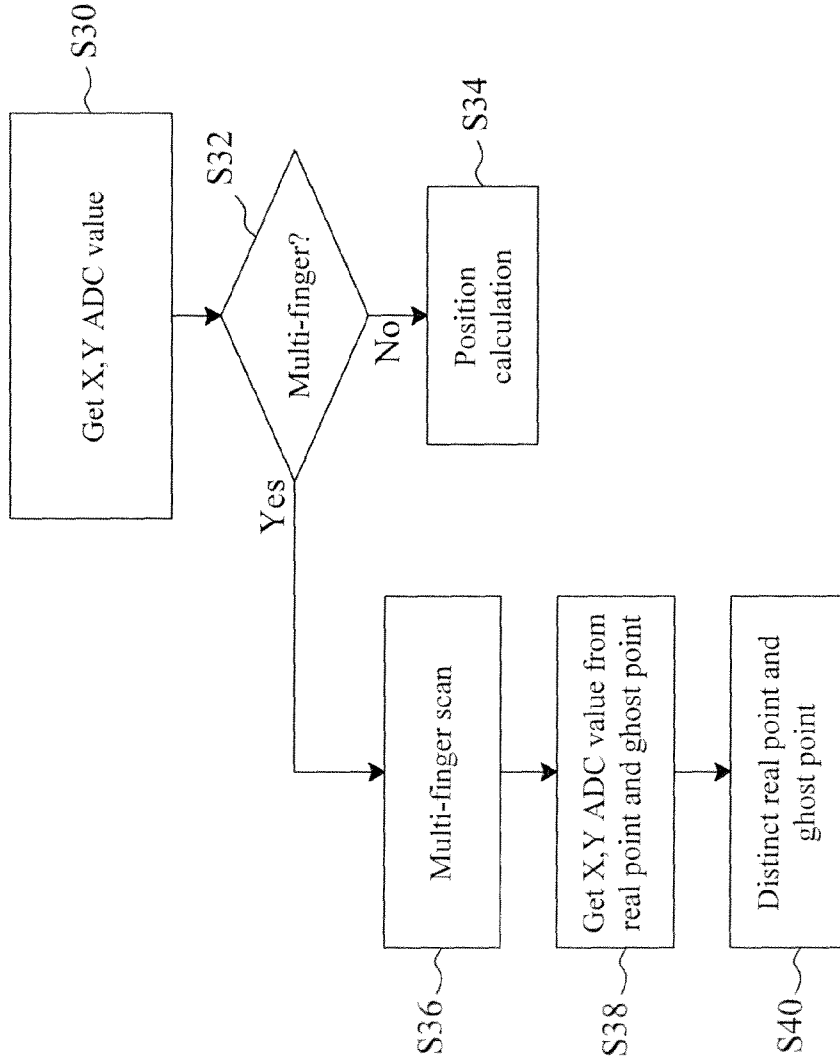


Fig. 4  
Prior Art

# Explore Litigation Insights

Docket Alarm provides insights to develop a more informed litigation strategy and the peace of mind of knowing you're on top of things.

## Real-Time Litigation Alerts



Keep your litigation team up-to-date with **real-time alerts** and advanced team management tools built for the enterprise, all while greatly reducing PACER spend.

Our comprehensive service means we can handle Federal, State, and Administrative courts across the country.

## Advanced Docket Research



With over 230 million records, Docket Alarm's cloud-native docket research platform finds what other services can't. Coverage includes Federal, State, plus PTAB, TTAB, ITC and NLRB decisions, all in one place.

Identify arguments that have been successful in the past with full text, pinpoint searching. Link to case law cited within any court document via Fastcase.

## Analytics At Your Fingertips



Learn what happened the last time a particular judge, opposing counsel or company faced cases similar to yours.

Advanced out-of-the-box PTAB and TTAB analytics are always at your fingertips.

## API

Docket Alarm offers a powerful API (application programming interface) to developers that want to integrate case filings into their apps.

## LAW FIRMS

Build custom dashboards for your attorneys and clients with live data direct from the court.

Automate many repetitive legal tasks like conflict checks, document management, and marketing.

## FINANCIAL INSTITUTIONS

Litigation and bankruptcy checks for companies and debtors.

## E-DISCOVERY AND LEGAL VENDORS

Sync your system to PACER to automate legal marketing.