

[54] **QUICK ERECTION COLLAPSIBLE SHELTER**  
**SHELTER**  
 [76] **Inventor:** **Mark C. Carter, 210 Pason, San Dimas, Calif. 91773**

[21] **Appl. No.:** **535,426**  
 [22] **Filed:** **Sep. 26, 1983**

[51] **Int. Cl.<sup>4</sup>** ..... **E04B 7/16; A45F 1/16**  
 [52] **U.S. Cl.** ..... **135/110; 52/109**  
 [58] **Field of Search** ..... **135/106, 107, 108, 109, 135/110, 111, 112, 113; 52/109**

[56] **References Cited**

**U.S. PATENT DOCUMENTS**

684,130	10/1901	Taubert	135/110
1,326,006	12/1919	Sterhardt	135/111 X
1,493,915	5/1924	Baker	135/109
1,712,836	5/1929	Mills	135/110
1,728,356	9/1929	Morgan	135/109
1,853,367	4/1932	Mace	135/110
3,174,397	3/1965	Sanborn	52/109 X
3,199,518	8/1965	Glidewell	135/109

3,335,815	8/1967	Oakes	52/109 X
3,375,624	4/1968	Mikulin	52/109
3,496,687	2/1970	Greenberg et al.	52/109
3,526,066	9/1970	Hagar et al.	52/109 X
4,156,433	5/1979	Beaulieu	135/110 X

**FOREIGN PATENT DOCUMENTS**

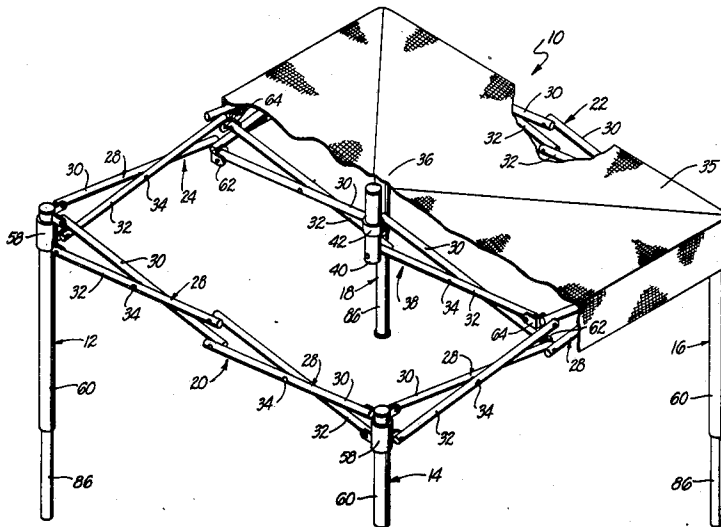
1434526	12/1968	Fed. Rep. of Germany	52/109
823693	10/1937	France	135/109
692885	8/1965	Italy	135/106
198803	6/1923	United Kingdom	135/111
672815	5/1952	United Kingdom	135/110

*Primary Examiner*—Richard J. Johnson  
*Attorney, Agent, or Firm*—Boniard I. Brown

[57] **ABSTRACT**

A quick-erect collapsible shelter having four or more telescoping legs, connected by a framework which includes pluralities of X-shaped linkages and a slider on each leg to provide interconnecting truss between the legs and support for a covering canopy.

**21 Claims, 10 Drawing Figures**



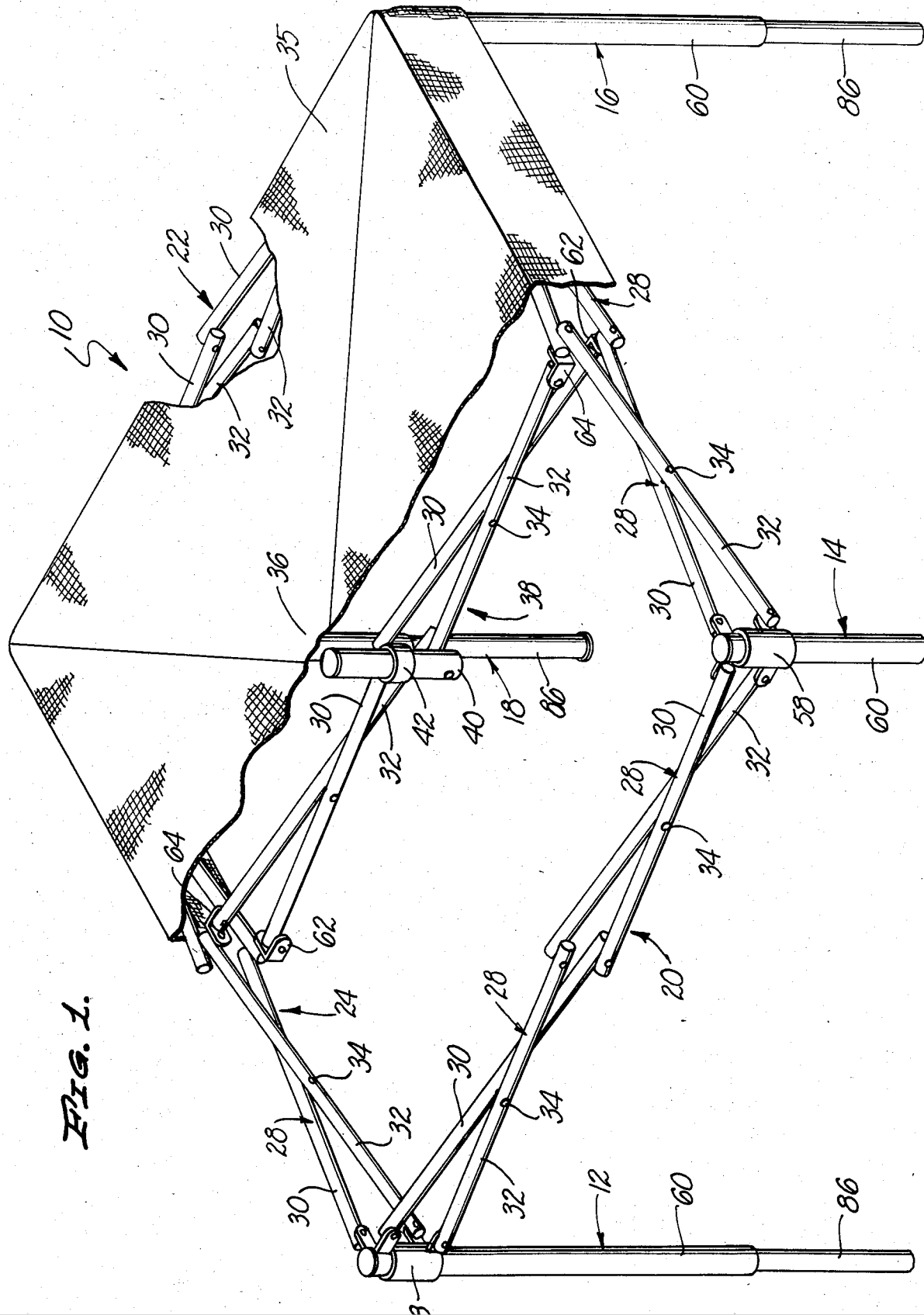
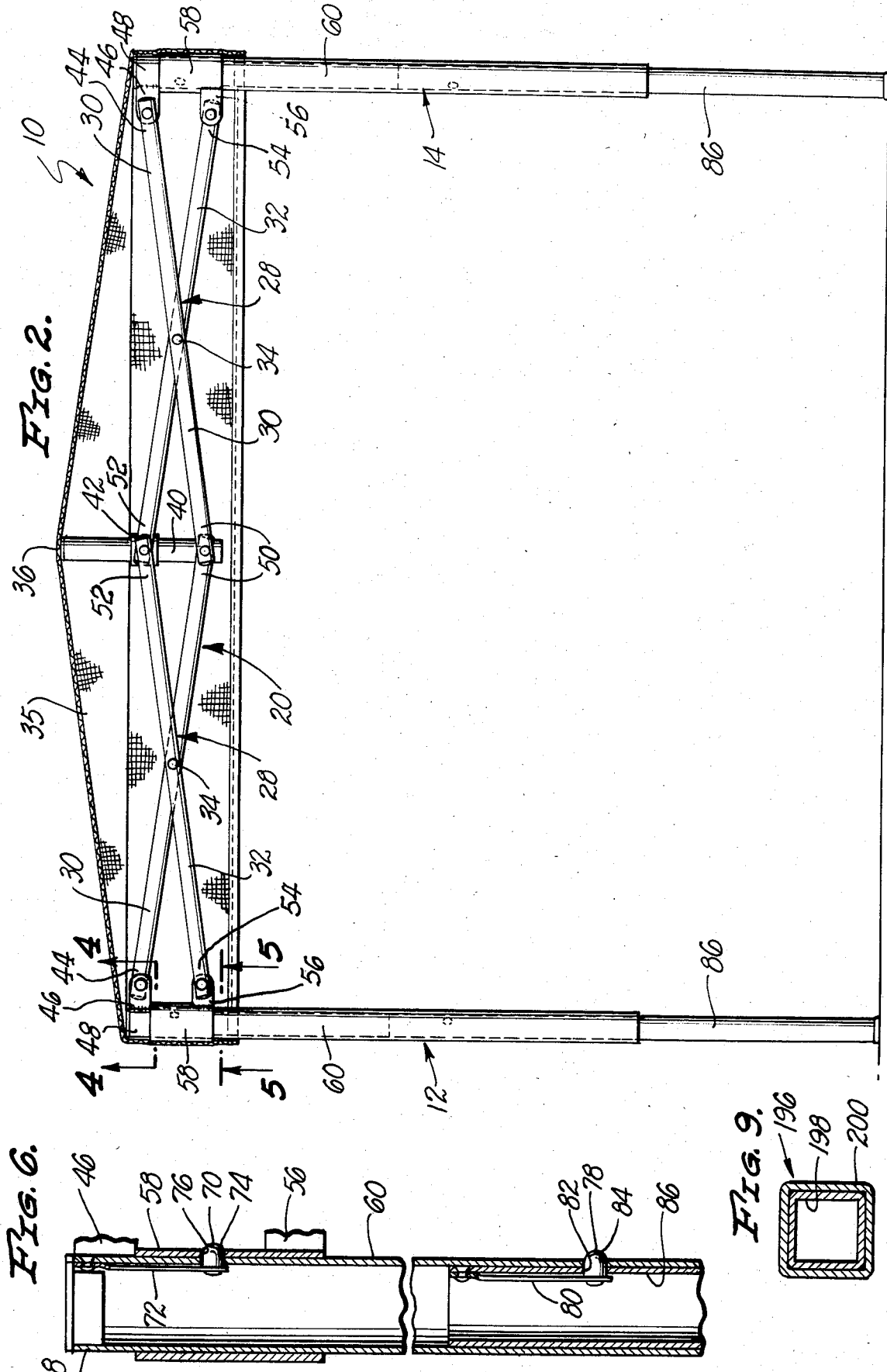


FIG. 1.



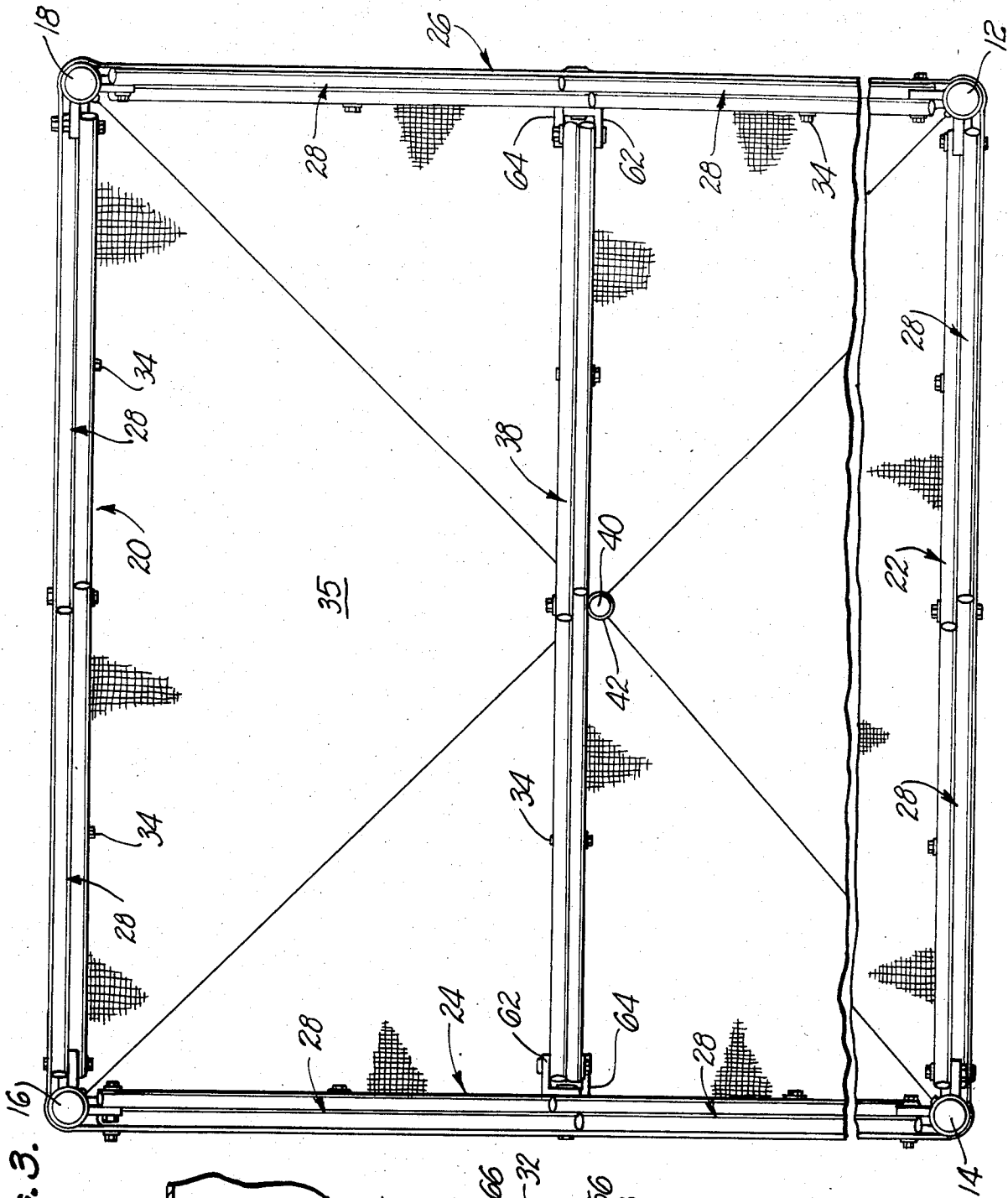


FIG. 3. 16)

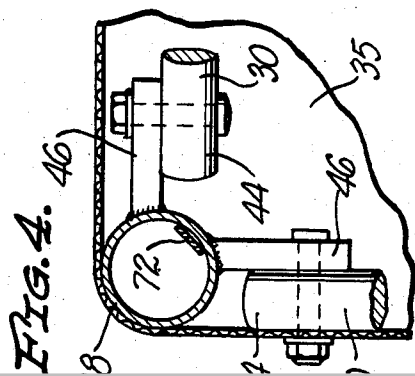


FIG. 4. 46)

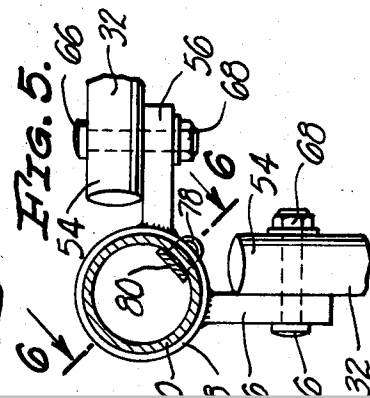


FIG. 5. 6)

FIG. 7.

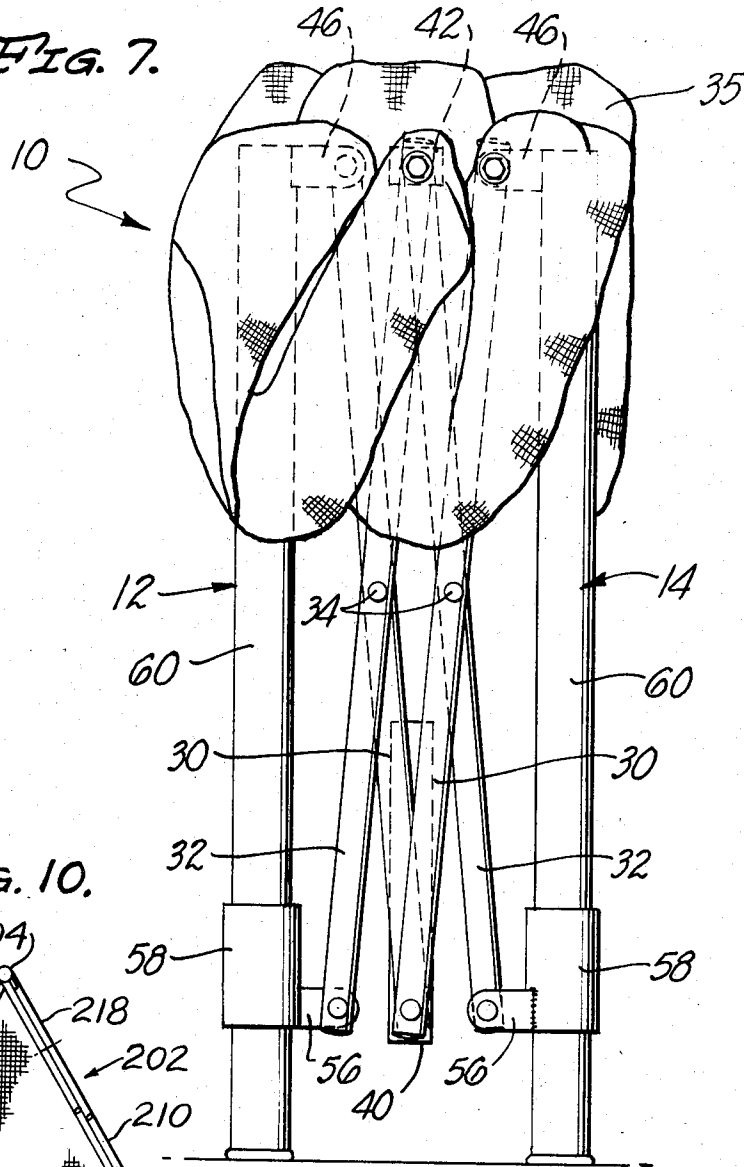


FIG. 10.

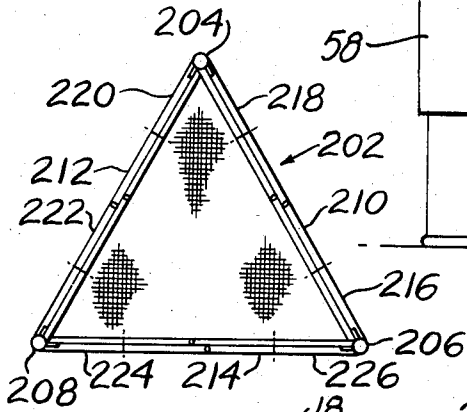
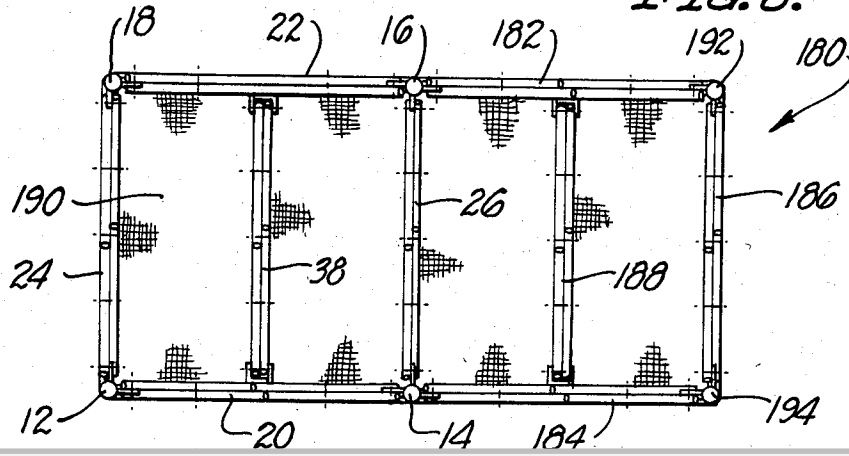


FIG. 8.



# Explore Litigation Insights

Docket Alarm provides insights to develop a more informed litigation strategy and the peace of mind of knowing you're on top of things.

## Real-Time Litigation Alerts



Keep your litigation team up-to-date with **real-time alerts** and advanced team management tools built for the enterprise, all while greatly reducing PACER spend.

Our comprehensive service means we can handle Federal, State, and Administrative courts across the country.

## Advanced Docket Research



With over 230 million records, Docket Alarm's cloud-native docket research platform finds what other services can't. Coverage includes Federal, State, plus PTAB, TTAB, ITC and NLRB decisions, all in one place.

Identify arguments that have been successful in the past with full text, pinpoint searching. Link to case law cited within any court document via Fastcase.

## Analytics At Your Fingertips



Learn what happened the last time a particular judge, opposing counsel or company faced cases similar to yours.

Advanced out-of-the-box PTAB and TTAB analytics are always at your fingertips.

## API

Docket Alarm offers a powerful API (application programming interface) to developers that want to integrate case filings into their apps.

## LAW FIRMS

Build custom dashboards for your attorneys and clients with live data direct from the court.

Automate many repetitive legal tasks like conflict checks, document management, and marketing.

## FINANCIAL INSTITUTIONS

Litigation and bankruptcy checks for companies and debtors.

## E-DISCOVERY AND LEGAL VENDORS

Sync your system to PACER to automate legal marketing.