

[54] **QUICK ERECTION COLLAPSIBLE SHELTER**
SHELTER
 [76] **Inventor:** **Mark C. Carter, 210 Pason, San Dimas, Calif. 91773**

[21] **Appl. No.:** **535,426**
 [22] **Filed:** **Sep. 26, 1983**

[51] **Int. Cl.⁴** **E04B 7/16; A45F 1/16**
 [52] **U.S. Cl.** **135/110; 52/109**
 [58] **Field of Search** **135/106, 107, 108, 109, 135/110, 111, 112, 113; 52/109**

[56] **References Cited**

U.S. PATENT DOCUMENTS

| | | | |
|-----------|---------|-----------|-----------|
| 684,130 | 10/1901 | Taubert | 135/110 |
| 1,326,006 | 12/1919 | Sterhardt | 135/111 X |
| 1,493,915 | 5/1924 | Baker | 135/109 |
| 1,712,836 | 5/1929 | Mills | 135/110 |
| 1,728,356 | 9/1929 | Morgan | 135/109 |
| 1,853,367 | 4/1932 | Mace | 135/110 |
| 3,174,397 | 3/1965 | Sanborn | 52/109 X |
| 3,199,518 | 8/1965 | Glidewell | 135/109 |

| | | | |
|-----------|--------|------------------|-----------|
| 3,335,815 | 8/1967 | Oakes | 52/109 X |
| 3,375,624 | 4/1968 | Mikulin | 52/109 |
| 3,496,687 | 2/1970 | Greenberg et al. | 52/109 |
| 3,526,066 | 9/1970 | Hagar et al. | 52/109 X |
| 4,156,433 | 5/1979 | Beaulieu | 135/110 X |

FOREIGN PATENT DOCUMENTS

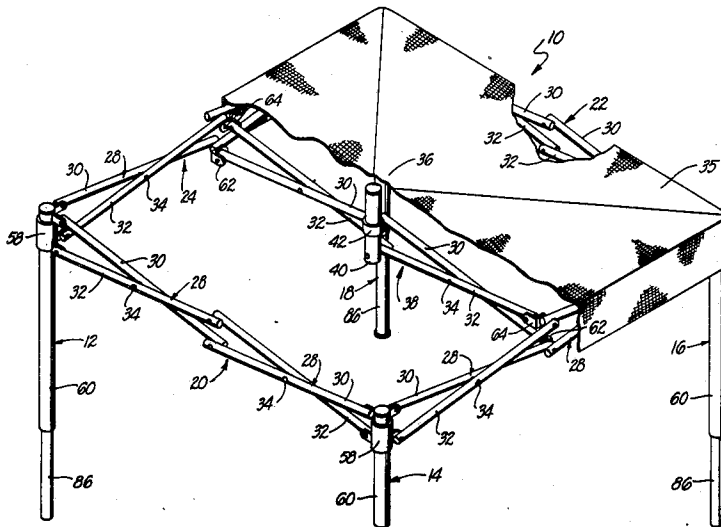
| | | | |
|---------|---------|----------------------|---------|
| 1434526 | 12/1968 | Fed. Rep. of Germany | 52/109 |
| 823693 | 10/1937 | France | 135/109 |
| 692885 | 8/1965 | Italy | 135/106 |
| 198803 | 6/1923 | United Kingdom | 135/111 |
| 672815 | 5/1952 | United Kingdom | 135/110 |

Primary Examiner—Richard J. Johnson
Attorney, Agent, or Firm—Boniard I. Brown

[57] **ABSTRACT**

A quick-erect collapsible shelter having four or more telescoping legs, connected by a framework which includes pluralities of X-shaped linkages and a slider on each leg to provide interconnecting truss between the legs and support for a covering canopy.

21 Claims, 10 Drawing Figures



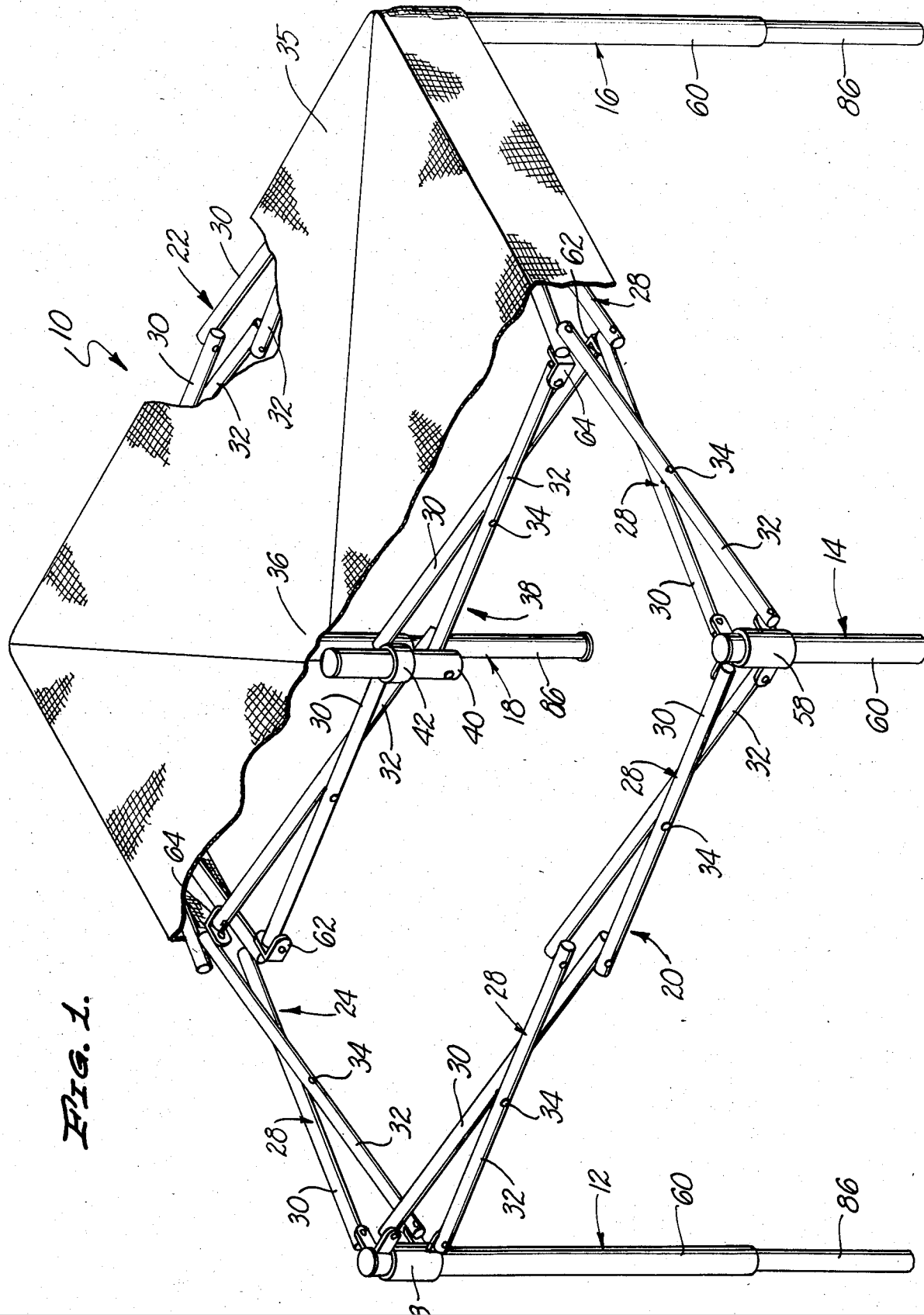
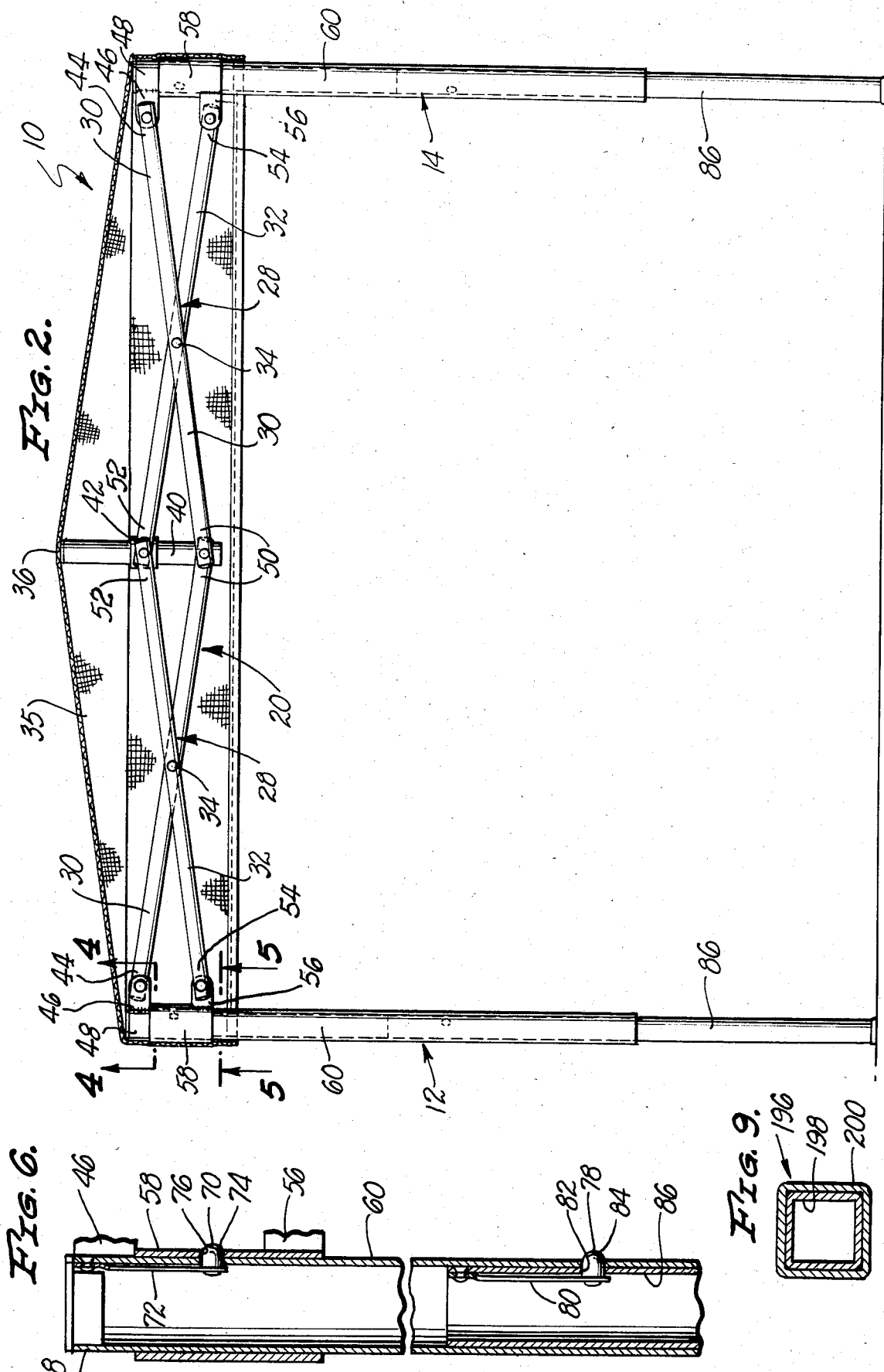


FIG. 1.



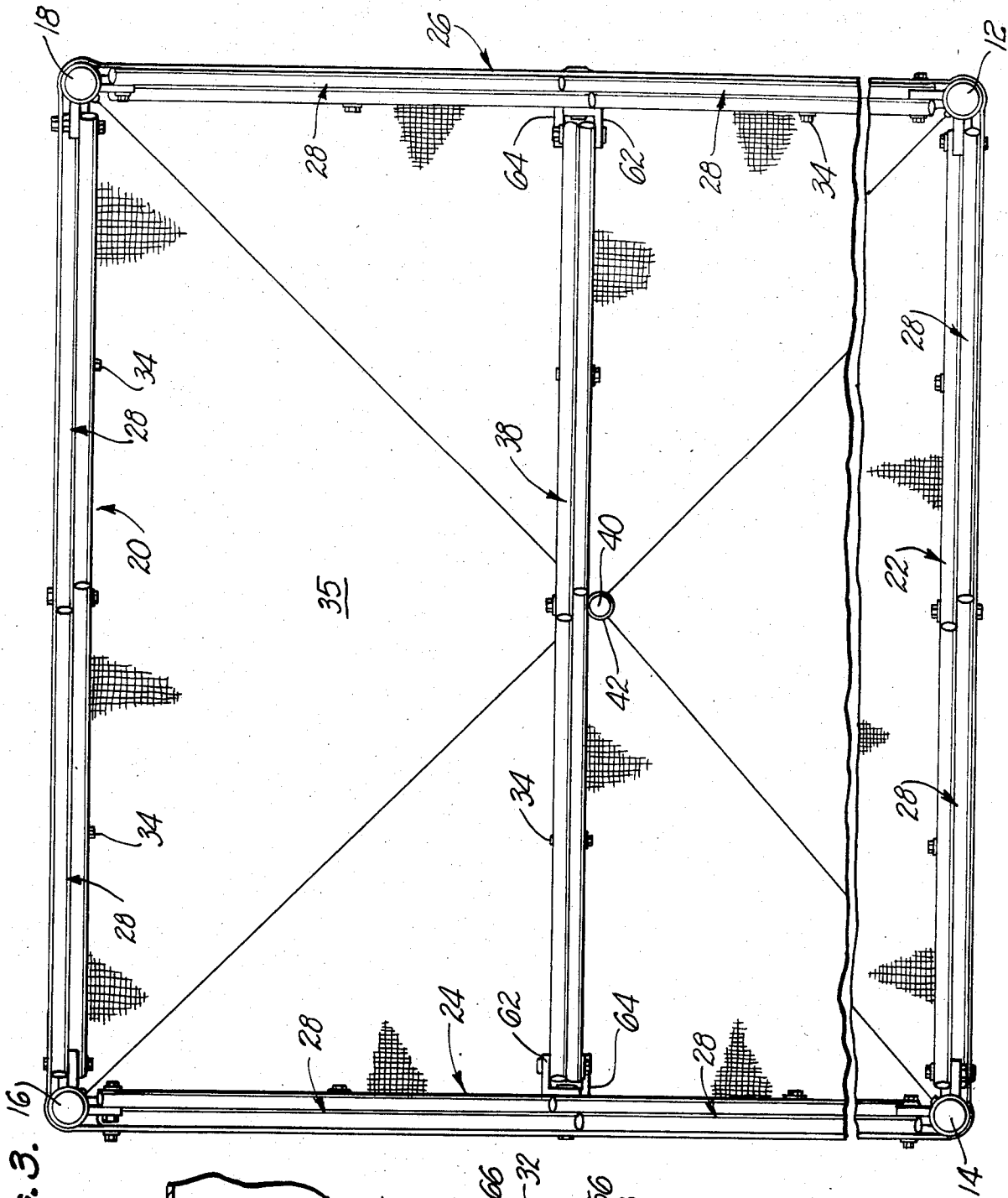


FIG. 3. 16)

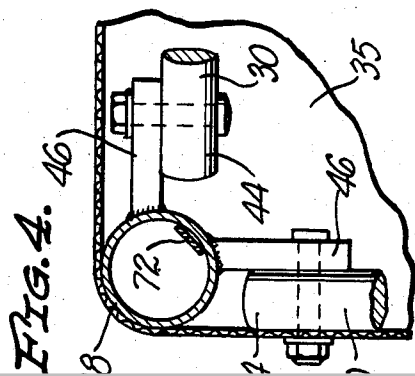


FIG. 4. 46)

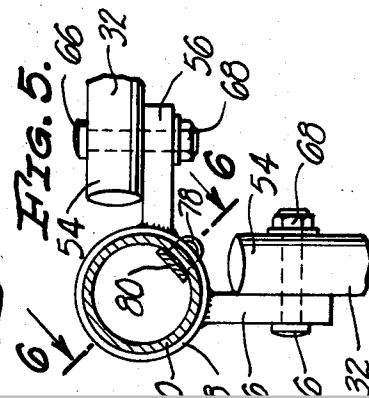


FIG. 5. 6)

Explore Litigation Insights

Docket Alarm provides insights to develop a more informed litigation strategy and the peace of mind of knowing you're on top of things.

Real-Time Litigation Alerts



Keep your litigation team up-to-date with **real-time alerts** and advanced team management tools built for the enterprise, all while greatly reducing PACER spend.

Our comprehensive service means we can handle Federal, State, and Administrative courts across the country.

Advanced Docket Research



With over 230 million records, Docket Alarm's cloud-native docket research platform finds what other services can't. Coverage includes Federal, State, plus PTAB, TTAB, ITC and NLRB decisions, all in one place.

Identify arguments that have been successful in the past with full text, pinpoint searching. Link to case law cited within any court document via Fastcase.

Analytics At Your Fingertips



Learn what happened the last time a particular judge, opposing counsel or company faced cases similar to yours.

Advanced out-of-the-box PTAB and TTAB analytics are always at your fingertips.

API

Docket Alarm offers a powerful API (application programming interface) to developers that want to integrate case filings into their apps.

LAW FIRMS

Build custom dashboards for your attorneys and clients with live data direct from the court.

Automate many repetitive legal tasks like conflict checks, document management, and marketing.

FINANCIAL INSTITUTIONS

Litigation and bankruptcy checks for companies and debtors.

E-DISCOVERY AND LEGAL VENDORS

Sync your system to PACER to automate legal marketing.