

[54] COLLAPSIBLE CANOPY STRUCTURE

[76] Inventor: James P. Lynch, 6901 W. 87th Way, #304, Arvada, Colo. 80003

[21] Appl. No.: 573,070

[22] Filed: Jan. 23, 1984

[51] Int. Cl.⁴ A45F 1/16; E04H 15/50

[52] U.S. Cl. 135/110; 135/115

[58] Field of Search 135/90, 109, 110, DIG. 2, 135/106, 107, 111, 112, 113; 52/109

[56] References Cited

U.S. PATENT DOCUMENTS

684,130	10/1901	Taubert	135/110
1,326,006	12/1919	Sterhardt	135/109
1,493,915	5/1924	Baker	135/109
1,712,836	5/1929	Mills	135/110
1,728,356	9/1929	Morgan	135/109
1,853,367	4/1932	Mace	135/110
2,135,961	11/1938	Chemoweth	135/109
2,440,557	4/1948	Power	135/90
2,770,243	11/1956	Miller	135/109
2,928,404	3/1960	Klages	135/109
3,174,397	3/1965	Sandborn	52/109
3,199,518	8/1965	Glidewell	135/109
3,335,815	8/1967	Oakes	52/109
3,375,625	4/1968	Mikulin	52/109
3,496,687	2/1970	Greenberg	52/109
3,526,066	9/1970	Hagar	52/27
4,156,433	5/1979	Beaulieu	52/109

FOREIGN PATENT DOCUMENTS

1434526	12/1968	Fed. Rep. of Germany	52/109
823693	1/1938	France	135/109
692885	8/1965	Italy	135/106
198803	6/1923	United Kingdom	135/111
672815	5/1952	United Kingdom	135/110

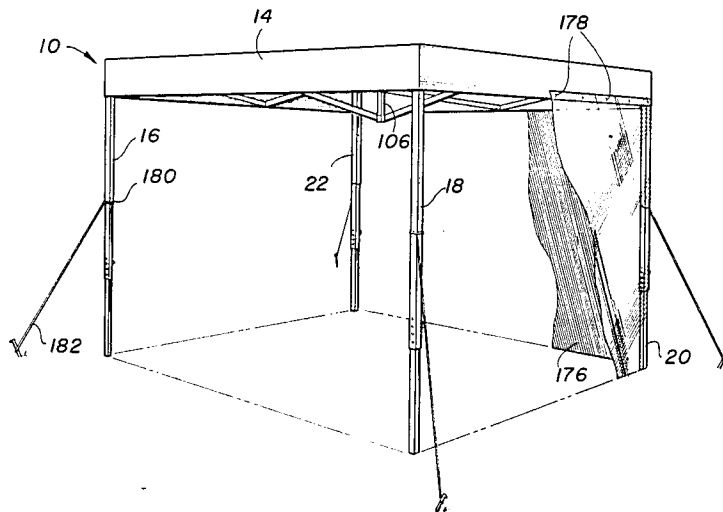
Primary Examiner—Richard J. Johnson

Attorney, Agent, or Firm—Timothy J. Martin

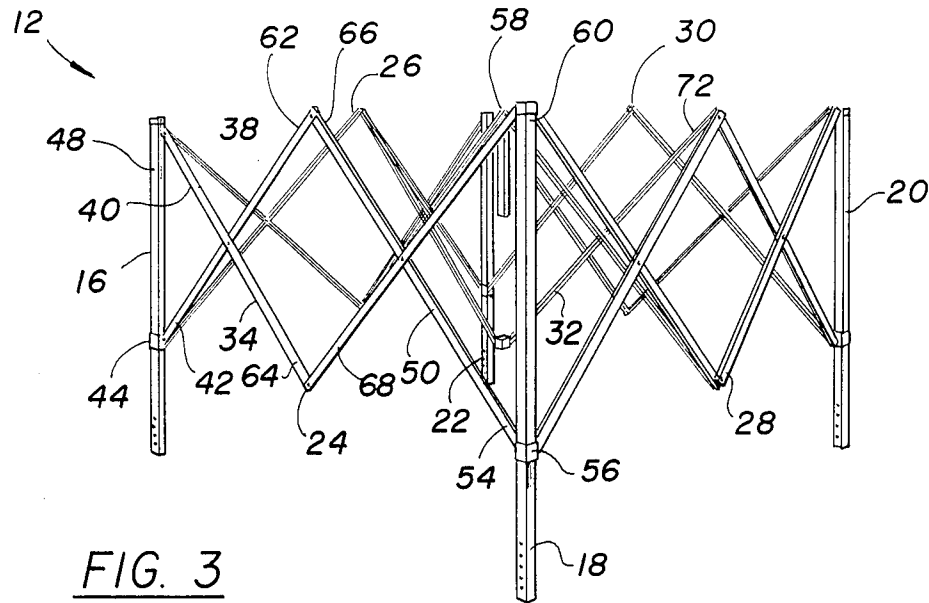
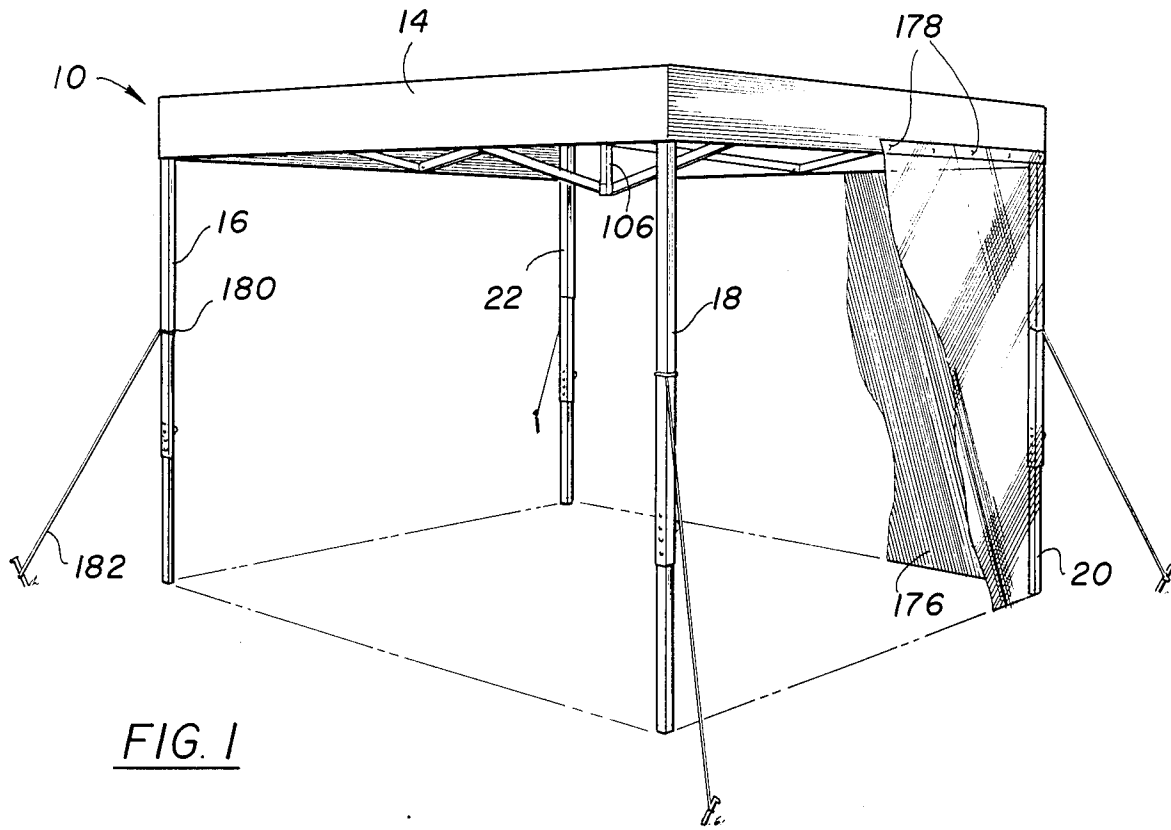
[57] ABSTRACT

A portable canopy structure may be erected from a collapsed state to an expanded state that shelters a desired surface. The canopy structure includes a dome-like covering that is held in position by a support framework having a plurality of upright support members that are interconnected by a plurality of scissor assemblies. Each upright support member slideably mounts a slide bracket, and a rigid bracket is mounted at its top. The scissor assemblies are connected to these brackets. Preferably the structure is in the form of a parallelepiped, and an internal scissor assembly extends between two facing side scissor assemblies which interconnect the upright supports. The covering extends across the tops of the supports and has side panels which depend downwardly from its perimeter, and the internal scissor assembly supports a central post that helps support the covering. A screen may be positioned around the support structure and may be connected to and be downwardly dependent from the side panels. Guy cords may be provided for the upright support members.

5 Claims, 10 Drawing Figures



Patent Owner CCI



Patent Owner CCI

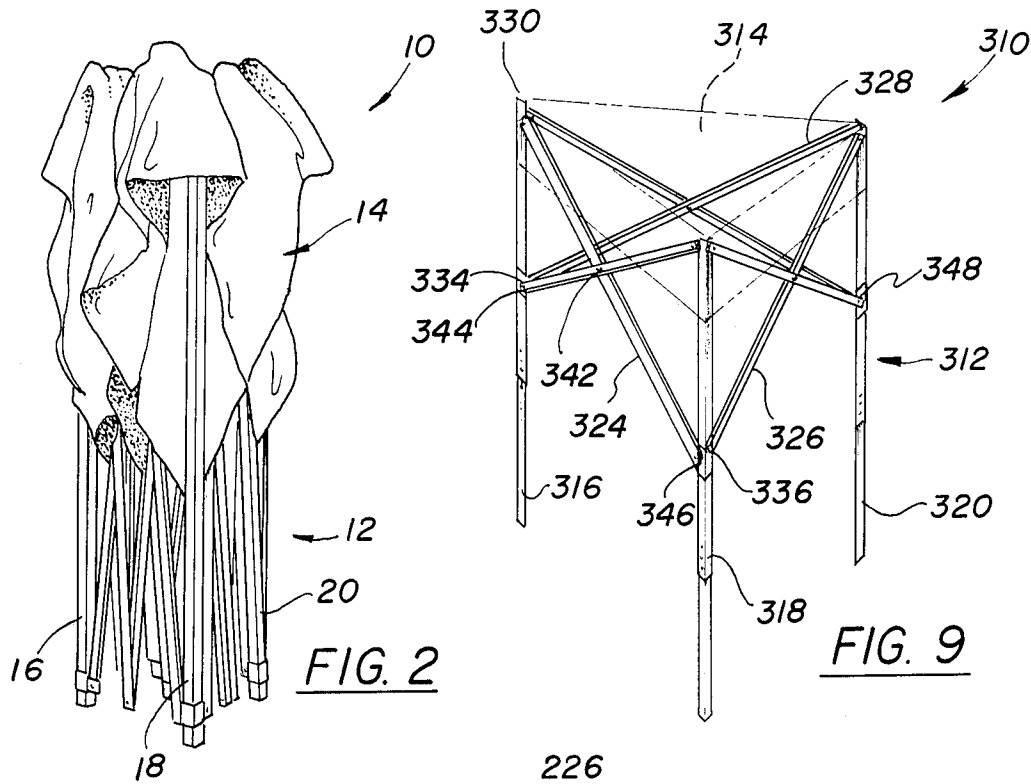


FIG. 2

FIG. 9

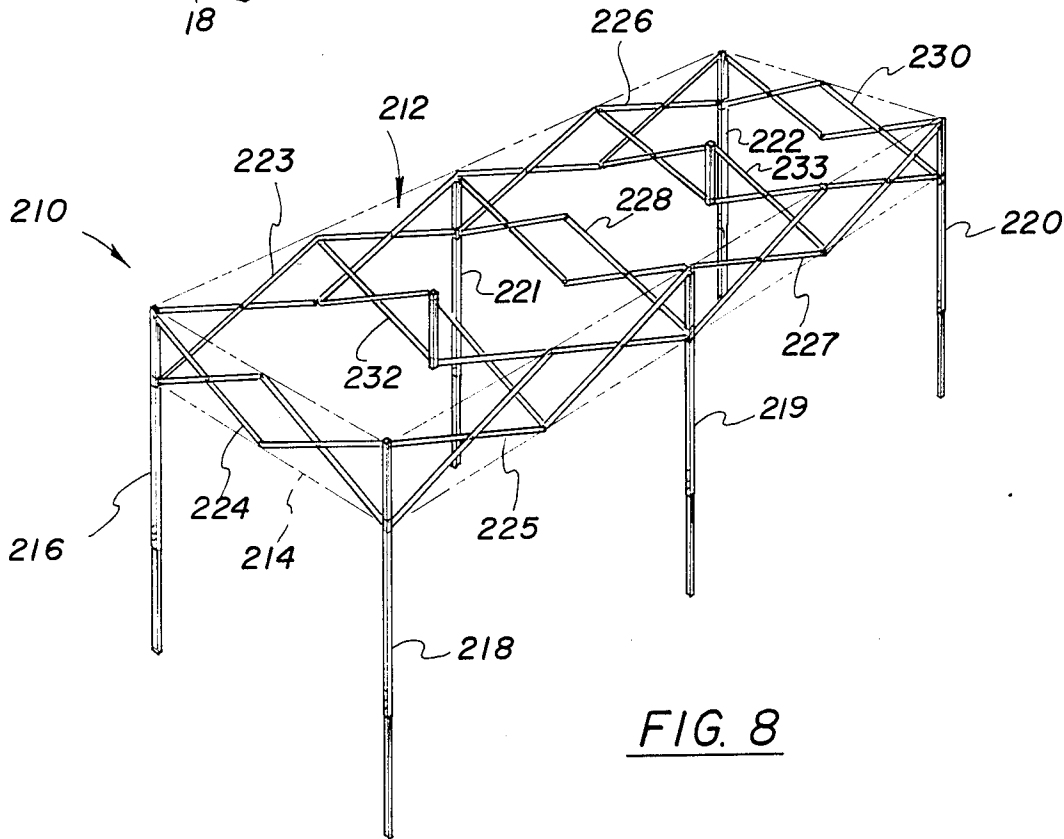


FIG. 8

Patent Owner CCI

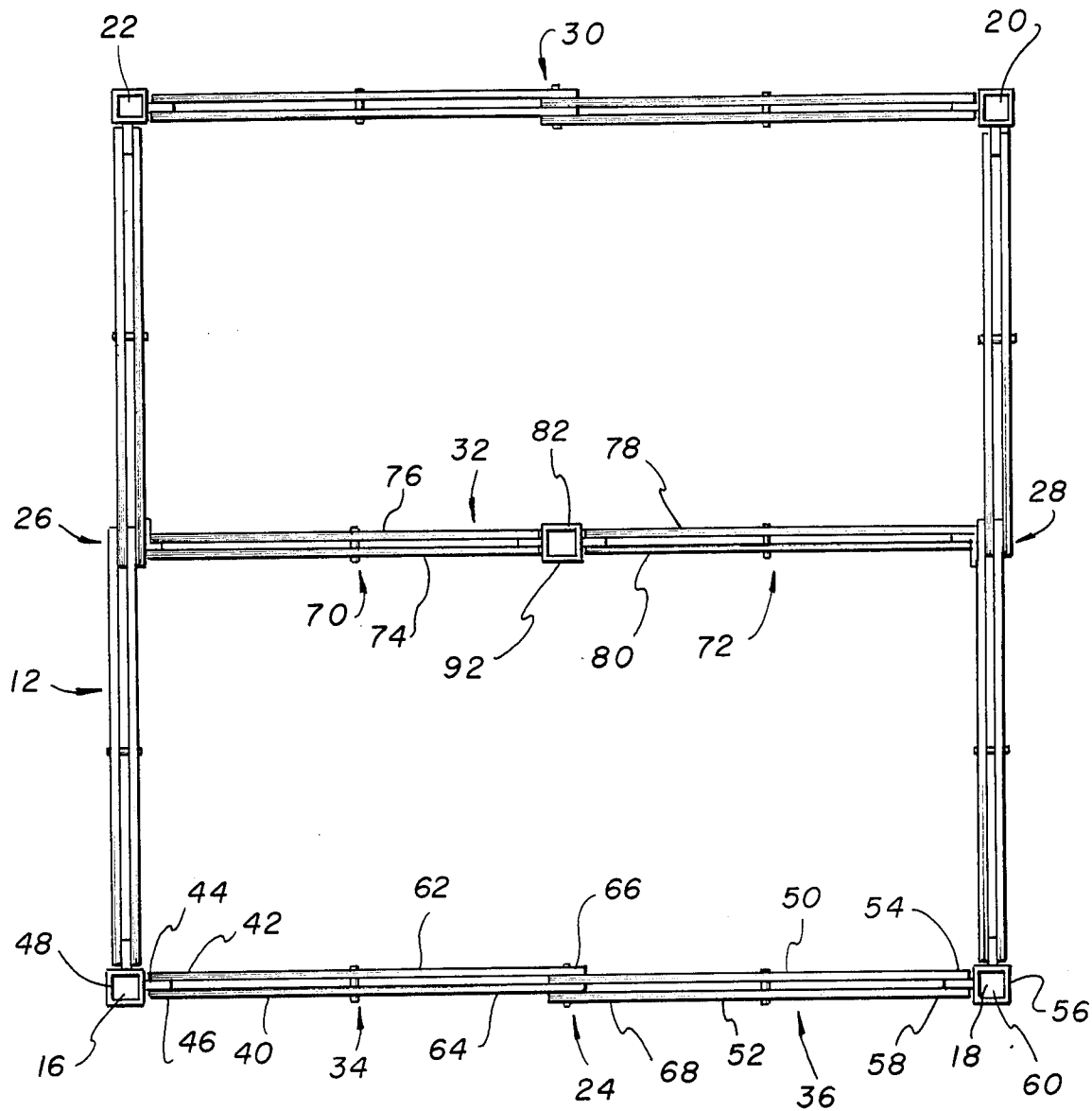
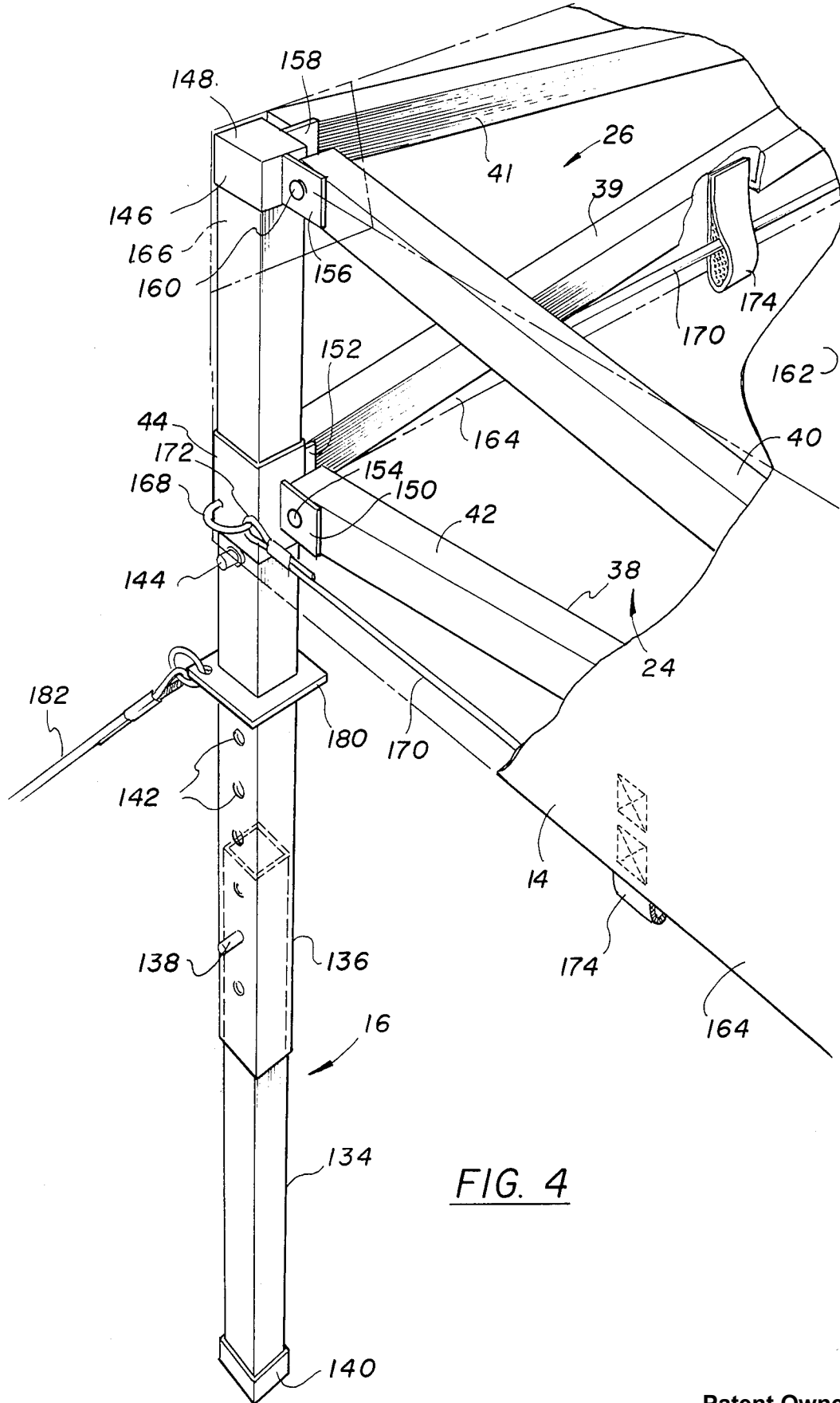


FIG. 3A



Patent Owner CCI

Explore Litigation Insights

Docket Alarm provides insights to develop a more informed litigation strategy and the peace of mind of knowing you're on top of things.

Real-Time Litigation Alerts



Keep your litigation team up-to-date with **real-time alerts** and advanced team management tools built for the enterprise, all while greatly reducing PACER spend.

Our comprehensive service means we can handle Federal, State, and Administrative courts across the country.

Advanced Docket Research



With over 230 million records, Docket Alarm's cloud-native docket research platform finds what other services can't. Coverage includes Federal, State, plus PTAB, TTAB, ITC and NLRB decisions, all in one place.

Identify arguments that have been successful in the past with full text, pinpoint searching. Link to case law cited within any court document via Fastcase.

Analytics At Your Fingertips



Learn what happened the last time a particular judge, opposing counsel or company faced cases similar to yours.

Advanced out-of-the-box PTAB and TTAB analytics are always at your fingertips.

API

Docket Alarm offers a powerful API (application programming interface) to developers that want to integrate case filings into their apps.

LAW FIRMS

Build custom dashboards for your attorneys and clients with live data direct from the court.

Automate many repetitive legal tasks like conflict checks, document management, and marketing.

FINANCIAL INSTITUTIONS

Litigation and bankruptcy checks for companies and debtors.

E-DISCOVERY AND LEGAL VENDORS

Sync your system to PACER to automate legal marketing.